



natural<sup>led</sup>

▶▶ Turning Light into Savings





Turning Light into Savings

# TABLE OF CONTENTS

## LAMPS

---

Filament.....	10
CRI 90 & Energy Star, JA8	Section 01
Candelabra & Globe.....	10
CRI 80 & Energy Star	Section 02
A19 JA8/T20.....	11
CRI 90 & Energy Star	Section 03
A19 JA8/T20 Enclosed Fixtures Rated.....	11
CRI 90 & Energy Star	Section 04
A21JA8/T20.....	12
CRI 90, Energy Star, JA8, CEC	Section 05
R/ BR Lamps.....	12
CRI 90 & Energy Star	Section 06
PAR Lamps.....	13
CRI 90 & Energy Star	Section 07
PAR Lamps Outdoor Rated.....	13
CRI 90 & Energy Star	Section 08
MR16.....	14
CRI 80 & Energy Star	Section 09
Bi-Pin Lamps (JC & JCD).....	14
Low Voltage and Line Voltage	Section 10
HID Retrofit.....	15
CRI 80 (E26 and EX39 Base)	Section 11-12
Plug-in Lamps.....	16
Ballast Compatible	Section 13
Tubes T5.....	16-17
Instant Fit / Integrated Driver & DLC	Section 14
Tubes T8.....	17-18
Instant Fit / Integrated Driver / Universal Design & DLC	Section 16-18

# TABLE OF CONTENTS

## FIXTURES

---

Retrofit Recess Can.....	22
CRI 90, JA8 & Energy Star	Section 01
Disk Light.....	22
CRI 90, JA8 & Energy Star	Section 02
Commercial Recessed Light.....	23
CRI 80 & Energy Star	Section 03
Under Cabinet.....	23
CRI 90, JA8 & Energy Star	Section 04
FMC.....	24
CRI 80 & Energy Star	Section 05
FMD.....	24
CRI 90, JA8 & Energy Star	Section 06
FMR.....	25
CRI 80 & Energy Star	Section 07
FMM.....	25
CRI 80 & Energy Star	Section 08
Decorative Accent.....	26
CRI 80 & Energy Star	Section 9
Utility Strip Light.....	26
CRI 80 & DLC	Section 10
Commercial Strip Light.....	27
DLC Premium	Section 11
Retrofit Strip Light.....	27
DLC Premium	Section 12
Utility Wrap.....	28
DLC	Section 13
VT Parking Garage.....	28
DLC Premium & CRI 80	Section 14
Vapor Tight Linear.....	29
DLC Premium & CRI80	Section 15
Flat Panel.....	30
DLC Premium & DLC	Section 16-17
Troffer (2x2) (2x4).....	31
DLC Premium	Section 18-19
Round High Bay.....	32
Motion Sensor/ DLC Premium & IP65	Section 20-21
Linear High Bay.....	33
DLC Premium & IP66	Section 22-23
High Bay.....	34
DLC Premium	Section 24

Slim Canopy/ Parking Garage.....	35
DLC Premium & IP65 Rated	Section 25-26
Slim Canopy (Large).....	36
DLC Premium	Section 27
Gas Station Canopy.....	36
DLC Premium & IP65 Rated (Dark Bronze/White)	Section 28
Traditional Wall Pack .....	37
DLC & IP65 Rated/ DLC Premium & IP65 Rated	Section 29-30
Adjustable Slim Wall Pack.....	38
DLC Premium & IP65 Rated	Section 31
Cut Off Wall Pack.....	38
DLC & IP65 Rated	Section 32
Floodlight.....	39
DLC & IP65 Rated	Section 33
Bullet Flood Single.....	39
DLC & IP65 Rated	Section 34
Floodlight Compact.....	40
DLC & I 65 Rated	Section 35
Floodlight .....	40
DLC Premium & IP65 Rated	Section 36
Sports Light.....	41
DLC Premium & IP65 Rated	Section 37
Post Top.....	41
DLC Premium & IP65 Rated	Section 38
Bollard.....	42
DLC & IP65 Rated	Section 39
Slim Area Light.....	43-44
DLC Premium & IP65 Rated	Section 40-41
HID Retrofit Kit.....	45
DLC Premium	Section 42
Vapor Tight Jelly Jar.....	46
Energy Star	Section 43
BulkHead Wall Light.....	46
Energy Star	Section 44
Up Down Wall Sconce.....	47
Energy Star	Section 45
Wall Sconce/ Pendant Light.....	47
	Section 46
Security Flood Light.....	48
Energy Star & Wet Rated Location	Section 47-48
Security Wall Light.....	49
Energy Star	Section 49-50
Security Light.....	49
DLC & Photocell	Section 50
Work Lights.....	50
Wet Rated Location	Section 51

# TABLE OF CONTENTS

## ACCESSORIES

---

LED Emergency Driver.....	54	Section 01
Step Down Driver.....	54	Section 02
LED Unit Converter.....	54	Section 03
Portable Power Cable.....	55	Section 04
Microwave Photocell.....	55	Section 05
Button Photocell.....	55	Section 06
Down Light.....	56	Section 07
Under Cabinet.....	56	Section 08
FMD.....	56	Section 09
Decorative Accent.....	57	Section 10
Utility Wrap.....	57	Section 11
Flat Panel.....	57	Section 12
Troffer.....	58	Section 13
Round High Bay.....	58	Section 14
Linear High Bay.....	58	Section 15
Aircraft Cable.....	59	Section 16
Slim Canopy.....	59	Section 17
TWP Len Shield.....	59	Section 18
Slim Wall Pack.....	60	Section 19
Flood Light.....	60	Section 20
Slim Area Light.....	61-62	Section 21-22
Jelly Jar Vapor Tight.....	63	Section 23
Security Flood Light.....	63	Section 24
Dusk to Dawn.....	63	Section 25
PIR Photocell /Motion Sensor.....	64	Section 26

# LAMPS

---

Turning Light into Savings ▶▶▶

[www.mynaturaLED.com](http://www.mynaturaLED.com)





01

**Filament**

CRI 90, Energy Star, JA8

TITLE  
2015,000  
Rated  
Life Hours

SKU Code	Product Code	Watts	Watt Equiv.	Lumens
▶ 5940	LED4.5CAF/FIL/E12/30L/922	4.5W	40W	300
▶ 5941	LED5CAF/FIL/E26/32L/922	5W	40W	325
▶ 5942	LED5G25/FIL/35L/922	5W	40W	450
▶ 5994	* LED6.5A19/FIL/45L/922	6.5W	40W	455
▶ 5995	LED6.5ST19/FIL/45L/922	6.5W	40W	450



▶ Energy Star

\* Enclosed Rated

02

**Candelabra / Globe**

CRI 80 &amp; Energy Star

25,000  
Rated  
Life Hours

SKU Code	Product Code	Watts	Watt Equiv.	Lumens
▶ 4562	LED4.5CAB/32L/E12/827	4.5W	40W	325
▶ 4563	LED4.5CAB/32L/E12/830	4.5W	40W	325
▶ 4564	LED4.5CAB/32L/E12/850	4.5W	40W	325
▶ 5781	LED5CAB/32L/E26/27K	5W	40W	325
▶ 5814	LED6G25/45L/27K	6W	40W	450



▶ Energy Star

• New Item  
Check Availability

## 03

A19 JA8/T20  
CRI 90 & Energy Star

A19



SKU Code	Product Code	Watts	Watt Equiv.	Lumens
▶ 4522	LED5A19/45L/927	5W	40W	450
▶ 4523	LED5A19/45L/930	5W	40W	450
▶ 4524	LED5A19/45L/950	5W	40W	450
▶ 4525	LED9A19/81L/927	9W	60W	810
▶ 4526	LED9A19/81L/930	9W	60W	810
▶ 4532	LED9A19/81L/940	9W	60W	810
▶ 4527	LED9A19/81L/950	9W	60W	810
▶ 4513	LED12A19/110L/927	12W	75W	1,100
▶ 4528	LED12A19/110L/930	12W	75W	1,100
▶ 4533	LED12A19/110L/940	12W	75W	1,100
▶ 4529	LED12A19/110L/950	12W	75W	1,100



▶ Energy Star

## 04

A19 JA8/T20 Enclosed Fixtures Rated  
CRI 90 & Energy Star

SKU Code	Product Code	Watts	Watt Equiv.	Lumens
▶ 4534	LED9A19/EC/81L/927	9W	60W	810
▶ 4535	LED9A19/EC/81L/GU24/927	9W	60W	810



▶ Energy Star

05

## A21 JA8/T20

CRI 90, Energy Star, JA8, CEC



SKU Code	Product Code	Watts	Watt Equiv.	Lumens
▶ 4514	LED17A21/160L/927	17W	100W	1,600
▶ 4530	LED17A21/160L/930	17W	100W	1,600
▶ 4531	LED17A21/160L/950	17W	100W	1,600



▶ Energy Star

06

## R / BR

CRI 90 & Energy Star



SKU Code	Product Code	Watts	Watt Equiv.	Lumens
▶ 5834	LED8R20/50L/927	8W	50W	525
▶ 5982	LED8R20/52L/950	8W	50W	525
▶ 5835	LED9BR30/65L/927	10W	65W	650
▶ 5983	LED9BR30/71L/950	9W	65W	715
▶ 5842	LED12BR30/90L/927	12W	75W	938
▶ 5893	LED12BR30/95L/930	12W	75W	950
▶ 5978	LED12BR30/90L/940	12W	75W	950
▶ 5984	LED12BR30/95L/950	12W	75W	950
▶ 5836	LED15BR40/120L/927	15W	85W	1,200
▶ 5985	LED15BR40/130L/950	15W	90W	1,300



▶ Energy Star

07

## PAR

CRI 90 & Energy Star



SKU Code	Product Code	Watts	Watt Equiv.	Lumens
▶ 5924	LED8PAR20/50L/FL/930	8W	50W	500
▶ 5925	LED8PAR20/50L/FL/950	8W	50W	500
▶ 5926	LED10PAR30/80L/FL/930	10W	75W	800
▶ 5927	LED10PAR30/80L/FL/950	10.5W	75W	800

▶ Energy Star



08

## PAR Outdoor Rated

CRI 90 & Energy Star



SKU Code	Product Code	Watts	Watt Equiv.	Lumens
▶ 5928	LED10PAR30L/OD/80L/FL/930	10.5W	75W	800
▶ 5997	LED10PAR30L/OD/80L/FL/940	10.5W	75W	800
▶ 5929	LED10PAR30L/OD/80L/FL/950	10.5W	75W	800
▶ 5930	LED15PAR38/OD/120L/FL/930	15W	90W	1,200
▶ 5998	LED15PAR38/OD/120L/FL/940	15W	90W	1,200
▶ 5931	LED15PAR38/OD/120L/FL/950	15W	90W	1,200

▶ Energy Star



09

## MR16

CRI 80 & Energy Star



TITLE  
20

DIMMABLE

25,000  
Rated  
Life Hours

BEAM  
ANGLE  
40°



SKU Code	Product Code	Watts	Watt Equiv.	Lumens
• 4565	LED6MR16/50L/FL/830	6W	50W	500
• 4566	LED6.5MR16/50L/GU10/FL/930	6.5W	50W	500



► Energy Star

• New Item  
Check Availability

10

## BI-PIN (JC & JCD)

Low / Line Voltage



DIMMABLE

25,000  
Rated  
Life Hours

SKU Code	Product Code	Watts	Base	Lumens
4510	LED2JC/16L/G4/830	2W	G4	160
4511	LED2JC/17L/G4/850	2W	G4	170
4508	• LED2JCD/18L/G9/830	2W	G9	180
4509	• LED2JCD/20L/G9/850	2W	G9	200



• Dimmable

# 11

## HID Retrofit Integrated Ballast CRI 80: E26 Medium Base



SKU Code	Product Code	Watts	Watt Equiv.	Lumens
4540	LED16HID/E26/190L/830	16W	50-100W	1,900
4541	LED16HID/E26/190L/850	16W	50-100W	1,900



lamps

# 12

## HID Retrofit Integrated Ballast CRI 80: EX39 MOG Base



SKU Code	Product Code	Watts	Watt Equiv.	Lumens
▶ 4542	LED36HID/EX39/430L/850	36W	150W	4,300
▶ 4543	LED54HID/EX39/620L/850	54W	250W	6,200
▶ 4544	LED100HID/EX39/1100L/850	100W	400W	11,000



▶ DLC

13

## PLUG-IN INSTANT FIT

Ballast Compatible



SKU Code	Product Code	Watts	Watt Equiv.	Lumens
▶ 4547	LED12PL/H/100L/4P/835/IF	12W	26	950
▶ 4548	LED12PL/H/100L/4P/840/IF	12W	26	1,000
▶ 4545	LED18PL/H/185L/4P/840/IF	18W	42	1,800
▶ 4549	LED12PL/V/100L/4P/835/IF	12.5W	26	950
▶ 4550	LED12PL/V/100L/4P/840/IF	12.5W	26	1,000
▶ 4546	LED18PL/V/185L/4P/840/IF	18W	42	1,800



▶ DLC

14

## LED Tube (T5)

Instant Fit



SKU Code	Product Code	Watts	Watt Equiv.	Lumens
▶ 5902	LED28T5/FR32/840/IF	28W	54W	3,200
▶ 5903	LED28T5/FR32/850/IF	28W	54W	3,200



▶ DLC



15

## LED Tube (T5)

Double Sided Wiring



SKU Code	Product Code	Watts	Watt Equiv.	Lumens
▶ 5943	LED25T5/FR35/850	25W	54W	3,500



▶ DLC

16

## LED Tube (T8)

Instant Fit (UL Type A)



Single

SKU Code	Product Code	Watts	Watt Equiv.	Lumens
5988	LED10T8/24FR12/840/IF	10W	17W	1,156
5989	LED10T8/24FR12/850/IF	10W	17W	1,208
▶ 4551	LED12T8/36FR14/840/IF	12W	17W	1,450
▶ 4552	LED12T8/36FR14/850/IF	12W	17W	1,450
▶ 4536	LED13T8/FR16/840/IF	13W	32W	1,650
▶ 4537	LED13T8/FR16/850/IF	13W	32W	1,650
5991	LED14T8/FR18/850/IF	14W	32W	1,794
5887	LED38T8/96FR44/840/IF	38W	75W	4,400
5888	LED38T8/96FR44/850/IF	38W	75W	4,400



▶ DLC

17

## LED Tube (T8)

Integrated Driver Universal Design

(Shunted / Non-Shunted sockets)



SKU Code	Product Code	Watts	Watt Equiv.	Lumens
▶ 4556	LED9T8/24FR11/840/UNV	9W	17W	1,100
▶ 4557	LED9T8/24FR11/850/UNV	9W	17W	1,100
▶ 4538	LED14T8/FR18/840/UNV	14W	32W	1,800
▶ 4539	LED14T8/FR18/850/UNV	14W	32W	1,800



▶ DLC

18

## LED Tube (T8)

Integrated Driver (UL Type B)



SKU Code	Product Code	Watts	Watt Equiv.	Lumens
▶ 5955	LED15T8/FR18/840G1	15W	32W	1,800
▶ 5956	LED15T8/FR18/850G1	15W	32W	1,800
▶ 5958	LED43T8/96FR55/840	43W	110W	5,500
▶ 5959	LED43T8/96FR55/850	43W	110W	5,500
5960	LED43T8/96FR55/R17D/840	43W	110W	5,500
5961	LED43T8/96FR55/R17D/850	43W	110W	5,500



▶ DLC

• New Item  
Check Availability



# FIXTURES

---

Turning Light into Savings ▶▶▶

[www.mynaturaLED.com](http://www.mynaturaLED.com)



01

## Retrofit Recess Can

CRI 90 & Energy Star, JA8



SKU Code	Product Code	Watts	Lumens
▶ 7688	LED4RL9-54L930	9W	540
▶ 7689	LED4RL9-54L940	9W	540
▶ 7690	LED4RL9-54L950	9W	540
▶ 7691	LED6RL15-110L930	15W	1,100
▶ 7692	LED6RL15-110L940	15W	1,100
▶ 7693	LED6RL15-110L950	15W	1,100

[See Accessories](#)

▶ Energy Star



02

## DISK LIGHT

CRI 90 & Energy Star, JA8



SKU Code	Product Code	Watts	Lumens
▶ 9368	LED4DLR-60L9CCT3 (3000K,4000K,5000K)	9W	600
▶ 9368	LED4DLS-60L9CCT3 (3000K,4000K,5000K)	9W	600
▶ 9370	LED6DLR-80L9CCT3 (3000K,4000K,5000K)	12W	800
▶ 9371	LED6DLS-80L9CCT3 (3000K,4000K,5000K)	12W	800



▶ Energy Star

• New Item  
Check Availability

# 03

## COMMERCIAL RECESSED LIGHT CRI 80 & Energy Star



Select Watt

120-277V



SKU Code	Product Code	Select Watt	Lumens
▶ 9352	LED6CRL21SW-150L930/MV	9/14/21W	1,500
▶ 9353	LED6CRL21SW-150L940/MV	9/14/21W	1,500
▶ 9354	LED8CRL27SW-200L930/MV	12/19/27W	2,000
▶ 9355	LED8CRL27SW-200L940/MV	12/19/27W	2,000



▶ Energy Star

• New Item  
Check Availability

# 04

## UNDER CABINET CRI 90 & Energy Star, JA8



SKU Code	Product Code	Watts	Lumens
▶ 7591	LED-FXUC4/9FR/930	4W	260
▶ 7592	LED-FXUC4/9FR/940	4W	260
▶ 7600	LED-FXUC7/18FR/930	7W	420
▶ 7601	LED-FXUC7/18FR/940	7W	420

See Accessories

▶ Energy Star



fixtures

05

## FMC

CRI 80 & Energy Star



SKU Code	Product Code	Watts	Lumens
▶ 7454	LED7FMC-70L830	10W	700
▶ 7455	LED7FMC-70L840	10W	700
▶ 7456	LED7FMC-70L850	10W	700
•• 9366	LED7FMC-90L930	15W	900
•• 9367	LED7FMC-90L9CCT3 (3000K,4000K,5000K)	15W	900



▶ Energy Star

• New Item  
Check Availability

06

## FMD

CRI 90 & Energy Star, JA8



SKU Code	Product Code	Watts	Lumens
▶ 9372	LED7FMD-90L9CCT3 (3000K,4000K,5000K)	15W	900

See Accessories



▶ Energy Star

• New Item  
Check Availability



07

## FMR ROUND

CRI 80 & Energy Star



SKU Code	Product Code	Watts	Lumens
▶ 7058	LED8FMR-80L830	12W	800
▶ 7059	LED8FMR-80L840	12W	800
▶ 7142	LED12FMR-110L830	14W	1,143
▶ 7143	LED12FMR-110L840	14W	1,143
▶ 7156	LED12FMR-110L850	14W	1,143
▶ 7146	LED16FMR-160L830	22W	1,672
▶ 7147	LED16FMR-160L840	22W	1,672
▶ 7157	LED16FMR-160L850	22W	1,672



▶ Energy Star

08

## FMM MODERN

CRI 80 & Energy Star



SKU Code	Product Code	Watts	Lumens
▶ 7430	LED12FMM-138L830-NI	18W	1,380
▶ 7431	LED12FMM-138L840-NI	18W	1,380
▶ 7433	LED14FMM-165L830-NI	22W	1,700
▶ 7434	LED14FMM-165L840-NI	22W	1,700
▶ 7533	LED16FMM-196L830-NI	26W	1,960
▶ 7534	LED16FMM-196L840-NI	26W	1,960
▶ 7596	• LED12FMM-138L840-NI/MV	18W	1,380
▶ 7597	• LED14FMM-165L840-NI/MV	22W	1,652

See Accessories

▶ Energy Star

• 120-277V



09

## DECORATIVE ACCENT

CRI 80 & Energy Star



SKU Code	Product Code	Watts	Lumens
▶ 7018	LED-FXDAL23/12FR/830/NI	23W	1,610
▶ 7019	LED-FXDAL23/12FR/840/NI	23W	1,610
▶ 7020	LED-FXDAL23/24FR/830/NI	23W	2,000
▶ 7021	LED-FXDAL23/24FR/840/NI	23W	2,000

See Accessories

▶ Energy Star



10

## UTILITY STRIP LIGHT

CRI 80 & DLC



SKU Code	Product Code	Watts	Lumens
▶ 7593	LED-FXUSL40/48FR/840/MV	40W	4,387
▶ 7594	LED-FXUSL40/48FR/850/MV	40W	4,518
▶ 9253	• LED-FXUSL40/48FR/840/MV-SEN	40W	4,387

See Accessories

• with sensor ▶ DLC



# 11

## COMMERICAL STRIP LIGHT

CRI 80 & DLC Premium



SKU Code	Product Code	Watts	Lumens
• 9259	LED-FXCSSL20/24FR/840/MV	20W	3,200
• 9260	LED-FXCSSL20/24FR/850/MV	20W	3,200
• 9261	LED-FXCSSL25/48FR/840/MV	25W	3,750
• 9262	LED-FXCSSL25/48FR/850/MV	25W	3,750
• 9263	LED-FXCSSL35/48FR/840/MV	35W	5,250
• 9264	LED-FXCSSL35/48FR/850/MV	35W	5,250
• 9265	LED-FXCSSL42/96FR/840/MV	42W	6,300
• 9266	LED-FXCSSL42/96FR/850/MV	42W	6,300
• 9267	LED-FXCSSL56/96FR/840/MV	56W	8,500
• 9268	LED-FXCSSL56/96FR/850/MV	56W	8,500
• 9350	LED-FXCSSL68/96FR/840/MV	68W	10,200
• 9351	LED-FXCSSL68/96FR/850/MV	68W	10,200
• 9344	*LED-FXCSSL35/48FR/840/MV-SEN	35W	5,250
• 9345	*LED-FXCSSL35/48FR/850/MV-SEN	35W	5,250

See Accessories



► DLC-P

- New Item Check Availability
- \* with sensor

# 12

## RETROFIT STRIP LIGHT

CRI 80 & DLC



SKU Code	Product Code	Watts	Lumens
• 9346	LED-FXRSL25/48FR/840/MV	25W	3,800
• 9347	LED-FXRSL25/48FR/850/MV	25W	3,800
• 9348	LED-FXRSL56/96FR/840/MV	56W	8,500
• 9349	LED-FXRSL56/96FR/850/MV	56W	8,500

See Accessories



► DLC-P

- New Item Check Availability

# 13

## UTILITY WRAP CRI 80 & DLC



SKU Code	Product Code	Watts	Lumens
▶ 7074	LED-FXUW29/40K	29W	3,004
▶ 7075	LED-FXUW29/50K	29W	3,040
▶ 9289	LED-FXCWS38/48FR/840	38W	5,000

See Accessories

▶ DLC  
• New Item  
Check Availability



# 14

## VAPOR TIGHT PARKING GARAGE CRI 80 & DLC Premium



SKU Code	Product Code	Watts	Lumens
▶ 9269	LED-FXVTL25/48CL/PG/840	25W	3,000
▶ 9270	LED-FXVTL25/48CL/PG/850	25W	3,000
▶ 9271	LED-FXVTL52/48CL/PG/840	52W	6,240
▶ 9272	LED-FXVTL52/48CL/PG/850	52W	6,240

See Accessories

▶ DLC-P  
• New Item  
Check Availability



# 15

## VAPOR TIGHT LINEAR

CRI 80 & DLC Premium



SKU Code	Product Code	Watts	Lumens
• 9273	LED-FXVTL25/24FR/840	25W	3,250
• 9274	LED-FXVTL25/24FR/850	25W	3,250
• 9275	LED-FXVTL25/48FR/840	25W	3,250
• 9276	LED-FXVTL25/48FR/850	25W	3,250
• 9277	LED-FXVTL40/48FR/840	40W	5,200
• 9278	LED-FXVTL40/48FR/840	40W	5,200
• 9279	LED-FXVTL52/48FR/840	52W	6,760
• 9280	LED-FXVTL52/48FR/850	52W	6,760
• 9281	LED-FXVTL65/48FR/840	65W	8,450
• 9282	LED-FXVTL65/48FR/850	65W	8,450
• 9283	LED-FXVTL90/96FR/840	90W	11,700
• 9284	LED-FXVTL90/96FR/850	90W	11,700

See Accessories



► DLC-P

• New Item  
Check Availability

16

## FLAT PANEL

DLC



SKU Code	Product Code	Watts	Lumens
▶ 7721	LED-FXPNL40/1X4/835G1	41W	4,376
▶ 7675	LED-FXPNL40/1X4/840G1	41W	4,396
▶ 7686	LED-FXPNL40/1X4/850G1	41W	4,459
▶ 7720	LED-FXPNL40/2X2/835G1	40W	4,381
▶ 7674	LED-FXPNL40/2X2/840G1	40W	4,408
▶ 7685	LED-FXPNL40/2X2/850G1	40W	4,489
▶ 7722	LED-FXPNL50/2X4/835G1	50W	5,135
▶ 7676	LED-FXPNL50/2X4/840G1	50W	5,176
▶ 7687	LED-FXPNL50/2X4/850G1	50W	5,301

See Accessories

▶ DLC



17

## FLAT PANEL

DLC Premium



SKU Code	Product Code	Watts	Lumens
▶ 9220	LED-FXPNL26/1X4/840	26W	3,250
▶ 9219	LED-FXPNL28/2X2/840	28W	3,500
▶ 9221	LED-FXPNL36/2X4/840	36W	4,500

See Accessories

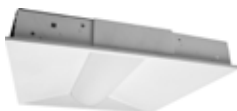
▶ DLC Premium



18

## TROFFER (2 x 2)

DLC Premium



SKU Code	Product Code	Watts	Lumens
▶ 9235	LED-FXTF20/2X2/835G1	20W	2,540
▶ 9236	LED-FXTF20/2X2/840G1	20W	2,600
▶ 9237	LED-FXTF20/2X2/850G1	20W	2,620

▶ DLC Premium

See Accessories



19

## TROFFER (2 x 4)

DLC Premium



SKU Code	Product Code	Watts	Lumens
▶ 9238	LED-FXTF30/2X4/835G1	30W	3,810
▶ 9239	LED-FXTF30/2X4/840G1	30W	3,900
▶ 9240	LED-FXTF30/2X4/850G1	30W	3,900
▶ 9241	LED-FXTF45/2X4/835G1	45W	5,715
▶ 9242	LED-FXTF45/2X4/840G1	45W	5,850
▶ 9243	LED-FXTF45/2X4/850G1	45W	5,850

▶ DLC Premium

See Accessories



20

## ROUND HIGH BAY

Occupancy / Motion Sensor Compatible



SKU Code	Product Code	Watts	Lumens
▶ 7694	LED-FX16HBR75/90/840	75W	10,028
▶ 7695	LED-FX16HBR75/90/850	75W	10,222
▶ 7696	LED-FX16HBR100/90/840	100W	14,461
▶ 7697	LED-FX16HBR100/90/850	100W	14,319
▶ 7698	LED-FX16HBR162/90/840	162W	21,080
▶ 7699	LED-FX16HBR162/90/850	162W	21,636

See page 51 for Accessories

▶ DLC Premium



21

## ROUND HIGH BAY

DLC Premium



SKU Code	Product Code	Watts	Lumens
▶ 7759	LED-FX11HBR90/110/850/IP65	90W	13,631
▶ 7760	LED-FX13HBR135/110/850/IP65	135W	20,474



▶ DLC Premium



22

## LINEAR HIGH/LOW BAY

DLC Premium & IP66 Rated



SKU Code	Product Code	Watts	Lumens
▶ 7715	LED-FXHBL75/22FR/850/IP66	75W	9,750
▶ 7717	LED-FXHBL100/22FR/850/IP66	100W	13,000
▶ 7719	LED-FXHBL162/22FR/850/IP66	162W	21,060

See Accessories

▶ DLC Premium



23

## LINEAR HIGH/LOW BAY

DLC Premium



SKU Code	Product Code	Watts	Lumens
▶ 7406	LED-FXHBL75/22FR/840	75W	9,907
▶ 7407	LED-FXHBL75/22FR/850	75W	10,163
▶ 7408	LED-FXHBL100/22FR/840	100W	13,216
▶ 7409	LED-FXHBL100/22FR/850	100W	13,852
▶ 7410	LED-FXHBL150/22FR/840	150W	19,017
▶ 7411	LED-FXHBL150/22FR/850	150W	19,476
▶ ● 9285	LED-FXHBL150/44FR/840	150W	20,000
▶ ● 9286	LED-FXHBL150/44FR/850	150W	20,000
▶ 7488	LED-FXHBL150/22FR/850/480	150W	19,537
▶ ● 9287	LED-FXHBL210/22FR/840	210W	27,300
▶ ● 9288	LED-FXHBL210/22FR/850	210W	27,300
▶ 7412	LED-FXHBL210/44FR/840	210W	27,243
▶ 7413	LED-FXHBL210/44FR/850	210W	27,744
▶ 7417	LED-FXHBL300/44FR/850	300W	39,472
▶ 7486	LED-FXHBL300/44FR/850/480	300W	39,125

See Accessories

▶ DLC Premium



▶ New Item  
Check Availability

24

# HIGH BAY

DLC Premium



SKU Code	Product Code	Watts	Lumens
▶ 7771	LED-FXHBE110/24FR/850	106W	13,741
▶ 7772	LED-FXHBE162/24FR/850	161W	20,852



▶ DLC Premium

25

SLIM CANOPY/  
PARKING GARAGE

DLC Premium &amp; IP65 Rated



SKU Code	Product Code	Watts	Lumens
▶ 7468	LED-FXSCM28/40K/BK	28W	3,236
▶ 7469	LED-FXSCM28/50K/BK	28W	3,375
▶ 7470	LED-FXSCM42/40K/BK	42W	4,871
▶ 7471	LED-FXSCM42/50K/BK	42W	5,003
▶ 7472	LED-FXSCM59/40K/BK	59W	6,800
▶ 7473	LED-FXSCM59/50K/BK	59W	6,985
▶ 7495	LED-FXSCM28/40K/WH	28W	3,236
▶ 7496	LED-FXSCM28/50K/WH	28W	3,375
▶ 7497	LED-FXSCM42/40K/WH	42W	4,871
▶ 7498	LED-FXSCM42/50K/WH	42W	5,003
▶ 7499	LED-FXSCM59/40K/WH	59W	6,800
▶ 7500	LED-FXSCM59/50K/WH	59W	6,985

See Accessories

▶ DLC Premium



26

SLIM CANOPY/  
PARKING GARAGE

DLC Premium &amp; IP65 Rated



\* Microwave Motion Sensor Included

SKU Code	Product Code	Watts	Lumens
▶ 7489	LED-FXSCM28/40K/BK-SEN	28W	3,236
▶ 7490	LED-FXSCM28/50K/BK-SEN	28W	3,375
▶ 7491	LED-FXSCM42/40K/BK-SEN	42W	4,871
▶ 7492	LED-FXSCM42/50K/BK-SEN	42W	5,003
▶ 7493	LED-FXSCM59/40K/BK-SEN	59W	6,800
▶ 7494	LED-FXSCM59/50K/BK-SEN	59W	6,985
▶ 7480	LED-FXSCM28/50K/WH-SEN	28W	3,375
▶ 7482	LED-FXSCM42/50K/WH-SEN	42W	5,003
▶ 7484	LED-FXSCM59/50K/WH-SEN	59W	6,985

See Accessories

▶ DLC Premium



# 27

## LARGE SLIM CANOPY/ PARKING GARAGE



DLC Premium and IP65 Rated



SKU Code	Product Code	Watts	Lumens
▶ 9244	LED-FXSCM60/40K/BK	60W	7,200
▶ 9245	LED-FXSCM60/50K/BK	60W	7,200
▶ 9248	LED-FXSCM85/40K/BK	85W	10,022
▶ 9249	LED-FXSCM85/50K/BK	85W	10,022
▶ 9211	LED-FXSCM100/40K/BK	100W	12,000
▶ 9212	LED-FXSCM100/50K/BK	100W	12,000

See Accessories

▶ DLC Premium



# 28

## GAS STATION CANOPY DLC Premium and IP65 Rated



SKU Code	Product Code	Watts	Lumens
▶ 7440	LED-FXGSC45/50K/WH	45W	5,513
▶ 7441	LED-FXGSC75/50K/WH	75W	8,997
▶ 7553	LED-FXGSC100/50K/WH	100W	13,279
▶ 7555	LED-FXGSC150/50K/WH	150W	20,041



▶ DLC Premium

29

## TWP WALL PACK

DLC Standard and IP65 Rated



SKU Code	Product Code	Watts	Lumens
7756	• LED-FXTWP28/30K/DB	28W	3,000
▶ 7466	• LED-FXTWP28/40K/DB	28W	3,004
▶ 7467	• LED-FXTWP28/50K/DB	28W	3,019
7757	LED-FXTWP42/30K/DB	42W	4,775
▶ 7076	LED-FXTWP42/40K/DB	42W	5,017
▶ 7077	LED-FXTWP42/50K/DB	42W	5,150
▶ 7088	LED-FXTWP60/40K/DB	60W	7,449
▶ 7089	LED-FXTWP60/50K/DB	60W	7,706
▶ 7765	LED-FXTWP95/40K/DB	95W	12,068
▶ 7766	LED-FXTWP95/50K/DB	95W	12,615
▶ 7767	LED-FXTWP120/40K/DB	120W	15,010
▶ 7768	LED-FXTWP120/50K/DB	120W	15,498

See Accessories

• Visor Included ▶ DLC



30

## TWP WALL PACK

DLC Premium and IP65 Rated



SKU Code	Product Code	Watts	Lumens
▶ 7775	LED-FXTWP38/40K/DB	38W	5,662
▶ 7776	LED-FXTWP38/50K/DB	38W	5,808
▶ 7777	LED-FXTWP55/40K/DB	55W	8,405
▶ 7778	LED-FXTWP55/50K/DB	55W	8,459

See Accessories

▶ DLC Premium



31

## ADJUSTABLE SLIM WALL PACK

DLC Premium & IP65 Rated



SKU Code	Product Code	Watts	Lumens
▶ 9301	LED-FXSWP15/840/DB	15W	1,800
▶ 9302	LED-FXSWP15/850/DB	15W	1,800
▶ 9303	LED-FXSWP29/840/DB	29W	3,480
▶ 9304	LED-FXSWP29/850/DB	29W	3,480
▶ 9305	LED-FXSWP45/840/DB	45W	5,400
▶ 9306	LED-FXSWP45/850/DB	45W	5,400
▶ 9307	LED-FXSWP15/840/BK	15W	1,800
▶ 9308	LED-FXSWP15/850/BK	15W	1,800
▶ 9309	LED-FXSWP29/840/BK	29W	3,480
▶ 9310	LED-FXSWP29/850/BK	29W	3,480
▶ 9311	LED-FXSWP45/840/BK	45W	5,400
▶ 9312	LED-FXSWP45/850/BK	45W	5,400

See Accessories

▶ DLC

• New Item  
Check Availability



32

## CUT OFF WALLPACK

DLC & IP65 Rated



SKU Code	Product Code	Watts	Lumens
▶ 9319	LED-FXCWP40/40K/BZ	40W	5,000
▶ 9320	LED-FXCWP40/50K/BZ	40W	5,000



▶ DLC

• New Item  
Check Availability

33

## FLOOD LIGHT

DLC & IP65 Rated



SKU Code	Product Code	Watts	Lumens
• 9313	LED-FXFDL15/77/40K/BZ-KNC	15W	1,905
• 9314	LED-FXFDL15/77/50K/BZ-KNC	15W	1,905
• 9315	LED-FXFDL30/77/40K/BZ-KNC	30W	3,810
• 9316	LED-FXFDL30/77/50K/BZ-KNC	30W	3,810
• 9317	LED-FXFDL50/77/40K/BZ-KNC	50W	6,350
• 9318	LED-FXFDL50/77/50K/BZ-KNC	50W	6,350



► DLC

- New Item
- Check Availability

34

## BULLET FLOOD SINGLE

DLC & IP65 Rated



SKU Code	Product Code	Watts	Lumens
• 9291	LED-FXBFS10/40D/830/BZ-KNC	10W	800
• 9292	LED-FXBFS10/40D/850/BZ-KNC	10W	800
• 9293	LED-FXBFS20/40D/830/BZ-KNC	20W	1,600
• 9294	LED-FXBFS20/40D/850/BZ-KNC	20W	1,600



► DLC

- New Item
- Check Availability

35

## FLOOD LIGHT COMPACT

DLC & IP65 Rated



SKU Code	Product Code	Watts	Lumens
7789	LED-FXFDL10/30K/BK	10W	1,100
▶ 7761	LED-FXFDL10/50K/BK	10W	1,100
▶ 7762	LED-FXFDL20/50K/BK	20W	2,200
▶ 7763	LED-FXFDL27/50K/BK	27W	3,024
▶ 7764	LED-FXFDL48/50K/BK	48W	5,280



▶ DLC

36

## FLOOD LIGHT

DLC Premium & IP65 Rated



SKU Code	Product Code	Watts	Lumens
▶ 7783	LED-FXFDL50/66/40K/BK	50W	6,656
▶ 7784	LED-FXFDL50/66/50K/BK	50W	6,750
▶ 7785	LED-FXFDL75/66/40K/BK	75W	10,008
▶ 7786	LED-FXFDL75/66/50K/BK	75W	10,125
▶ 7787	LED-FXFDL100/66/40K/BK	100W	13,332
▶ 7788	LED-FXFDL100/66/50K/BK	100W	13,596

▶ DLC Premium

See Accessories





37

## SPORTS LIGHT

DLC Premium & IP65 Rated



SKU Code	Product Code	Watts	Lumens
• 9323	LED-FX16SPL400/33/850/BK	400W	52,000
• 9325	LED-FX16SPL700/22/850/BK	700W	70,000
• 9324	LED-FX16SPL700/33/850/BK	700W	71,000



► **DLC Premium**  
 • New Item  
 Check Availability

38

## POST TOP

DLC & IP65 Rated



SKU Code	Product Code	Watts	Lumens
• 9297	LED-FX16PST35/840/BK	35W	4,200
• 9298	LED-FX16PST35/850/BK	35W	4,200
• 9299	LED-FX16PST73/840/BK	73W	8,760
• 9300	LED-FX16PST73/840/BK	73W	8,760



► **DLC**  
 • New Item  
 Check Availability

39

## BOLLARD

DLC & IP65 Rated



Multi-Wattage

SKU Code	Product Code	Watts	Lumens
• 9326	LED-FX8BLD18/FCN/840/BK	18W	2,000
• 9327	LED-FX8BLD18/FCN/850/BK	18W	2,000
• 9328	LED-FX8BLD18/FLV/840/BK	18W	2,000
• 9329	LED-FX8BLD18/FLV/850/BK	18W	2,000
• 9330	LED-FX8BLD18/FT3/840/BK	18W	2,000
• 9331	LED-FX8BLD18/FT3/850/BK	18W	2,000
• 9332	LED-FX8BLD18/FFR/840/BK	18W	2,000
• 9333	LED-FX8BLD18/FFR/850/BK	18W	2,000
• 9334	LED-FX8BLD18/FCN/840/BK	18W	2,000
• 9335	LED-FX8BLD18/FCN/850/BK	18W	2,000
• 9336	LED-FX8BLD18/FLV/840/BZ	18W	2,000
• 9337	LED-FX8BLD18/FLV/850/BZ	18W	2,000
• 9338	LED-FX8BLD18/FT3/840/BZ	18W	2,000
• 9339	LED-FX8BLD18/FT3/850/BZ	18W	2,000
• 9340	LED-FX8BLD18/FFR/840/BZ	18W	2,000
• 9341	LED-FX8BLD18/FFR/850/BZ	18W	2,000



▶ DLC

- New Item
- Check Availability

40

## SLIM AREA LIGHT

DLC Premium & IP65 Rated



SKU Code	Product Code	Watts	Lumens
▶ 7616	LED-FXSAL29/40K/DB/3S	29W	3,517
▶ 7617	LED-FXSAL29/50K/DB/3S	29W	3,576
▶ 7620	LED-FXSAL50/40K/DB/3S	50W	6,241
▶ 7621	LED-FXSAL50/50K/DB/3S	50W	6,247
7752	LED-FXSAL75/30K/DB/3S	75W	8,738
▶ 7624	LED-FXSAL75/40K/DB/3S	75W	8,738
▶ 7625	LED-FXSAL75/50K/DB/3S	75W	9,011
7754	LED-FXSAL100/30K/DB/3S	100W	11,548
▶ 7628	LED-FXSAL100/40K/DB/3S	100W	11,548
▶ 7629	LED-FXSAL100/50K/DB/3S	100W	11,821
▶ 7769	LED-FXSAL150/40K/DB/3S	150W	20,187
▶ 7770	LED-FXSAL150/50K/DB/3S	150W	20,604
7746	LED-FXSAL180/30K/DB/3S	180W	22,191
▶ 7632	LED-FXSAL180/40K/DB/3S	180W	22,191
▶ 7633	LED-FXSAL180/50K/DB/3S	180W	22,743
7748	LED-FXSAL240/30K/DB/3S	240W	29,794
▶ 7636	LED-FXSAL240/40K/DB/3S	240W	29,794
▶ 7637	LED-FXSAL240/50K/DB/3S	240W	30,274
7750	LED-FXSAL360/30K/DB/3S	360W	44,796
▶ 7640	LED-FXSAL360/40K/DB/3S	360W	44,796
▶ 7641	LED-FXSAL360/50K/DB/3S	360W	45,878
▶ 7724	LED-FXSAL180/40K/DB/3S/480	180W	22,147
▶ 7725	LED-FXSAL180/50K/DB/3S/480	180W	22,717
▶ 7728	LED-FXSAL240/40K/DB/3S/480	240W	28,912
▶ 7229	LED-FXSAL240/50K/DB/3S/480	240W	29,546
▶ 7732	LED-FXSAL360/40K/DB/3S/480	360W	43,560
▶ 7733	LED-FXSAL360/50K/DB/3S/480	360W	44,405
▶ 9234	• LED-FXSAL150/50K/BK/3S	154W	20,604

See Accessories

• Black ▶ DLC Premium



# 41

## SLIM AREA LIGHT DLC Premium & IP65 Rated



SKU Code	Product Code	Watts	Lumens
▶ 7618	LED-FXSAL29/40K/WH/3S	29W	3,517
▶ 7619	LED-FXSAL29/50K/WH/3S	29W	3,576
▶ 7622	LED-FXSAL50/40K/WH/3S	50W	6,241
▶ 7623	LED-FXSAL50/50K/WH/3S	50W	6,247
7753	LED-FXSAL75/30K/WH/3S	75W	8,738
▶ 7626	LED-FXSAL75/40K/WH/3S	75W	8,738
▶ 7627	LED-FXSAL75/50K/WH/3S	75W	9,011
7755	LED-FXSAL100/30K/WH/3S	100W	11,548
▶ 7630	LED-FXSAL100/40K/WH/3S	100W	11,548
▶ 7631	LED-FXSAL100/50K/WH/3S	100W	11,821
▶ 9232	LED-FXSAL150/50K/WH/3S	150W	20,604
▶ 7747	LED-FXSAL180/30K/WH/3S	180W	22,191
▶ 7634	LED-FXSAL180/40K/WH/3S	180W	22,191
▶ 7635	LED-FXSAL180/50K/WH/3S	180W	22,743
7749	LED-FXSAL240/30K/WH/3S	240W	29,794
▶ 7638	LED-FXSAL240/40K/WH/3S	240W	29,794
▶ 7639	LED-FXSAL240/50K/WH/3S	240W	30,274
7751	LED-FXSAL360/30K/WH/3S	360W	44,796
▶ 7642	LED-FXSAL360/40K/WH/3S	360W	44,796
▶ 7643	LED-FXSAL360/50K/WH/3S	360W	45,878
▶ 7726	LED-FXSAL180/40K/WH/3S/480	180W	22,147
▶ 7727	LED-FXSAL180/50K/WH/3S/480	180W	22,717
▶ 7730	LED-FXSAL240/40K/WH/3S/480	240W	28,912
▶ 7731	LED-FXSAL240/50K/WH/3S/480	240W	29,546
▶ 7734	LED-FXSAL360/40K/WH/3S/480	360W	43,560
▶ 7735	LED-FXSAL360/50K/WH/3S/480	360W	44,405

See Accessories

▶ DLC Premium



42

## HID RETROFIT KIT

DLC Premium



SKU Code	Product Code	Watts	Lumens
▶ 7608	LED-RKIT50HID/40K	50W	6,738
▶ 7609	LED-RKIT50HID/50K	50W	6,837
▶ 7610	LED-RKIT120HID/40K	120W	15,554
▶ 7611	LED-RKIT120HID/50K	120W	15,735
▶ 7612	LED-RKIT200HID/40K	200W	28,678
▶ 7613	LED-RKIT200HID/50K	200W	29,025
▶ 7614	LED-RKIT300HID/40K	300W	37,506
▶ 7615	LED-RKIT300HID/50K	300W	38,235



▶ DLC Premium

43

## VAPOR TIGHT JELLY JAR

Energy Star



50,000  
Rated  
Life Hours



SKU Code	Product Code	Watts	Lumens
▶ 7604	LED-FXVTJ20/830/MV-WM	20W	1,700
▶ 7605	LED-FXVTJ20/840/MV-WM	20W	1,700
▶ 7606	LED-FXVTJ20/830/MV-CM	20W	1,700
▶ 7607	LED-FXVTJ20/840/MV-CM	20W	1,700

See Accessories

▶ Energy Star



44

## BULKHEAD WALL LIGHT

Energy Star



50,000  
Rated  
Life Hours



SKU Code	Product Code	Watts	Lumens
▶ 7024	LED-FXBWL10/830/BK	10W	900
▶ 7025	LED-FXBWL10/850/BK	10W	900
▶ 7062	LED-FXBWL10/830/WH	10W	900



▶ Energy Star

45

## UP/DOWN WALL SCONCE

Energy Star



50,000  
Rated  
Life Hours



SKU Code	Product Code	Watts	Lumens
▶ 7026	LED-FXDWS10/830/BK	10W	700
▶ 7027	LED-FXDWS10/850/BK	10W	700
▶ 7064	LED-FXDWS20/830/BK	20W	1,400
▶ 7065	LED-FXDWS20/850/BK	20W	1,400
▶ 7068	LED-FXDWS10/830/WH	10W	700
▶ 7069	LED-FXDWS10/850/WH	10W	700
▶ 7070	LED-FXDWS20/830/WH	20W	1,400
▶ 7071	LED-FXDWS20/850/WH	20W	1,400
▶ 7022	LED-FXDWS10/830/NI	10W	700
▶ 7023	LED-FXDWS20/830/NI	20W	1,400

▶ Energy Star



46

## WALL SCONCE / PENDANT LIGHT

Indoor / Outdoor



50,000  
Rated  
Life Hours



SKU Code	Product Code	Watts	Lumens
▶ 7792	LED-FX5DWS25/33S/930/BK	25W	1700
▶ 7794	• LED-FX4PCL18/33/930/BK	18W	1300

▶ Energy Star



• New Item  
Check Availability

• pendant rod included

47

## SECURITY FLOOD LIGHT

Energy Star & Wet Rated Location



SKU Code	Product Code	Watts	Lumens
▶ 7082	LED-FXBFD20/830/BK	20W	1,400
▶ 7083	LED-FXBFD20/850/BK	20W	1,400
▶ 7672	LED-FXBFD20/830/WH	20W	1,400
▶ 7673	LED-FXBFD20/850/WH	20W	1,400

See Accessories

▶ Energy Star



48

## SECURITY FLOOD LIGHT

Motion Sensor Included



\* Microwave Motion Sensor Included

SKU Code	Product Code	Watts	Lumens
▶ 7030	LED-FXBFD20/830/BK-SEN	20W	1,400
▶ 7031	LED-FXBFD20/850/BK-SEN	20W	1,400
▶ 7066	LED-FXBFD20/830/WH-SEN	20W	1,400
▶ 7067	LED-FXBFD20/850/WH-SEN	20W	1,400

▶ Energy Star





49

## SECURITY WALL LIGHT

Energy Star & Photocell Included



50,000  
Rated  
Life Hours



SKU Code	Product Code	Watts	Lumens
▶ 7414	LED-FXSECW13/40K (120V)	13W	1,047
▶ 7415	LED-FXSECW13/50K (120V)	13W	1,047
▶ 7556	LED-FXSECWRT13/40K/MV	13W	1,040
▶ 7557	LED-FXSECWRT13/50K/MV	13W	1,040
▶ 7773	LED-FXSECW20/40K/MV	20W	1,767
▶ 7774	LED-FXSECW20/50K/MV	20W	1,902
▶ 7136	LED-FXSECW20/40K	20W	1,420
▶ 7137	LED-FXSECW20/50K	20W	1,420

▶ Energy Star



50

## SECURITY LIGHT

DLC & Photocell Included



50,000  
Rated  
Life Hours



SKU Code	Product Code	Watts	Lumens
▶ 7790	LED-FXSECS25/40K	25W	2,250
▶ 7190	LED-FXSECS28/40K	28W	3,076
▶ 7191	LED-FXSECS28/50K	28W	3,180
▶ 7477	LED-FXSECS38/40K	38W	4,158
▶ 7478	LED-FXSECS38/50K	38W	4,314

▶ DLC

See page 55 for Accessories



51

## WORK LIGHTS

Wet Rated Location



50,000  
Rated  
Life Hours

SKU Code	Product Code	Watts	Lumens
▶ 4560	LED36PWL/FR33/850	36W	3,300
▶ 4561	LED93PWL/FR70/850	93W	7,000
▶ 4555	LED60TL/FR66/850	60W	6,600





# ACCESSORIES

---

Turning Light into Savings ▶▶▶

[www.mynaturaLED.com](http://www.mynaturaLED.com)



## 01

## LED EMERGENCY DRIVER



SKU Code	Product Code	Description
7333	BAEM12-60BC/MV-B	LED Fixture Emergency Driver 120-277V
7334	BAEM15-48BC/MV-A	LED Fixture Emergency Driver 120-277V
• 7335	BAEM12-60BC/MV-A	LED Fixture Emergency Driver 120-277V

\*An additional installation fee will be applied per fixture

• New Item  
Check Availability

## 02

STEP DOWN DRIVER  
347-480V

SKU Code	Product Code	Description
P10138	BA-GETR480/277-250W	347-480V to 277V Driver for under 250W - LINEAR
P10182	BA-10031A-240-22	Step Down Transformer

\*An additional installation fee will be applied per fixture

## 03

## LED UNIT CONVERTER



SKU Code	Product Code	Description
P10056	BAEM-IIS-375-LED	375W LED Unit Inverter

## 04

## PORTABLE POWER CABLE

SO Cord



SKU Code	Product Code	Description
P10165	PWC-300V3-6ft	SO Cord 6ft for 300V 3 Conductor
P10166	PWC-300V3-10ft	SO Cord 10ft for 300V 3 Conductor
P10167	PWC-600V3-6ft	SO Cord 6ft for 600V 3 Conductor
P10168	PWC-600V3-10ft	SO Cord 10ft for 600V 3 Conductor
P10187	PWC-300V5-6ft	SO Cord 6ft for 300V 5 Conductor
P10188	PWC-300V5-10ft	SO Cord 10ft for 300V 5 Conductor
P10190	PWC-300V5-WH-10ft	SO Cord 10ft for 300V 5 Conductor White
P10219	PWC-300V3-30FT	SO Cord 30ft for 300V 3 Conductor
P10220	PWC-600V3-30FT	SO Cord 30ft for 600V 3 Conductor

## 05

## MICROWAVE PHOTOCELL

Utility Wrap, Strip Light, Vapor Tight, WallPack, Canopy, Troffer



SKU Code	Product Code	Description
P10091	SEN-UM05/ANT5	Motion/ Photocell 0-10V Internal 100-277V

\*An additional installation fee will be applied per fixture

## 06

## BUTTON PHOTOCELL

Area Light, WallPack, Flood Light



SKU Code	Product Code	Description
P10036	SEN-PHO-BT-MT/MV	Button Photocell 120-277V

\*An additional installation fee will be applied per fixture

## 07

## DOWNLIGHT



SKU Code	Product Code	Color	Description
P10029	ADP-RLGU24-N	-	GU24 Socket Adaptor
P10170	RT-6RL15-BK	Black	6" Trim for Downlight
P10173	RT-6RL15-BK	Black	5/6" Trim for Downlight
P10176	RTS-4RL9-WH	White	4" Square trim for Downlight
P10177	RTS-6RL15-WH	White	5/6" Square trim for Downlight

## 08

## UNDER CABINET



SKU Code	Product Code	Description
P10151	PWCQ-FXUC-10IN	10" Extended Quick Connector
P10152	PWC-FXUC-3FT	3 ft power cable for under cabinet
P10180	QC-FXUC-SRT	Quick connector for under cabinet

## 09

## FMD



SKU Code	Product Code	Description
P10246	BAEM-7FMD	Battery Backup
P10243	TR-7FMD-BK	Recessed Trim - FMD 7" -Black
P10244	TR-7FMD-NI	Recessed Trim - FMD 7" -Nickel
P10245	TR-7FMD-BZ	Recessed Trim - FMD 7" -Bronze



# 10

## FLUSH MOUNT/DAL

Flush Mount Modern/ Decorative Accent



SKU Code	Product Code	Description
P10117	• BAEM-184500-8C2.0	LED Emergency Driver for 120-277V FMM
P10077	SWCH-ZE109-NI	Pull String Switch Nickel
P10078	SWCH-ZE204A	Toggle Switch

\*An additional installation fee will be applied per fixture

• for Flush Mount Modern only

# 11

## UTILITY WRAP



SKU Code	Product Code	Description
P10009	BALED-UWS29-DIM	Dimmable Driver
P10161	LENS-UW29	Replacement Lens
P10197	PLT-UWS/4FT/WH	Wire Cover

\*An additional installation fee will be applied per fixture

# 12

## FLAT PANEL



SKU Code	Product Code	Description
P10096	MT-1X4BOX	1x4 Panel Surface Mount Kit
P10097	MT-2X2BOX	2x2 Panel Surface Mount Kit
P10098	MT-2X4BOX	2x4 Panel Surface Mount Kit
P10099	MT-PNL-HOOK-4PCS	Earthquake hook for 2x2 and 1x4
P10100	MT-PNL-HOOK-6PCS	Earthquake hook for 2x4
P10228	MT-2x2FMBOX	Flange Mount Box 2x2
P10229	MT-2x4FMBOX	Flange Mount Box 2x4
K7332189	FXPNL/BAEM/MT	Emergency driver w/bracket

Fits Flat Panel Series

Earthquake hooks are pre-installed

\*An additional installation fee will be applied per fixture

## 13

## TROFFER



SKU Code	Product Code	Description
K7334225	FXTF-BAEM-MT	EM Driver + bracket
K225091	PLT/FXTF/MC05	Motion Sensor
P10228	MT-2x2FMBOX	Flange Mount Box 2x2
P10229	MT-2x4FMBOX	Flange Mount Box 2x4

\*An additional installation fee will be applied per fixture

## 14

## ROUND HIGH BAY

Round High Bay Skirt



SKU Code	Product Code	Description
P10156	CVR-16HBR/LS/WH	High/Low Bay Skirt with Diffuser

## 15

## LINEAR HIGHBAY



SKU Code	Product Code	Description
P10092	MT-YK-HBL22	Yoke Mount 3/4" NPT for Rigid Pendant
P10093	MT-YK-HBL44	Yoke Mount 3/4" NPT for Rigid Pendant
P10094	WG-HBL22/WH	WireGuard
P10095	WG-HBL44/WH	WireGuard
P10086	SEN-LOS-509-SFG	Motion/Photocell On-Off Aisle Lens
P10088	SEN-LOD-500-SFG	Motion/Photocell 0-10V Aisle Lens
P10162	SEN-LRD-509-SFG	Remote Controllable Sensor 0-10V Aisle
P10087	SEN-LOS-509-SFC	Motion/Photocell On-Off Area Lens
P10089	SEN-LOD-500-SFC	Motion/Photocell 0-10V Area Lens
P10163	SEN-LRD-509-SFC	Remote Controllable Sensor 0-10V Area
P10164	SEN-SRP280	Remote Control for P10162 / P10163
P10153	SEN-LRD-609-SAC	Motion/Photocell 0-10V Internal 100-277V IP65

58 Fits our Linear Highbay (LHB) Series

\*An additional installation fee will be applied per fixture

# 16

## AIRCRAFT CABLE

Flat Panel, Troffer, HighBay



SKU Code	Product Code	Description
P10144	MT-ACC-10FT	10ft Aircraft Cable
P10147	MT-ACC-4FT	4ft Aircraft Cable

# 17

## SLIM CANOPY



SKU Code	Product Code	Description
P10195	PLT-SCM/14X14/WH	Plate for 14x14 WH
P10196	PLT-SCM/24X24/WH	Plate for 24x24 WH
P10126	LENS-SCM/DR9X9	Lens 9x9 drop Lens
P10125	LENS-SCM/FR9X9	Lens 9x9 frosted Lens

# 18

## TWP LENS/SHIELD

Forward Throw Wall Pack



SKU Code	Product Code	Description
P10055	CVR-TWP28/DB	Cover Option Wallpack 28W
P10022	CVR-TWP-MEDIUM/DB	Cover Option Wallpack 38W-60W
P10023	CVR-TWP-LARGE/DB	Cover Option Wallpack 80W-120W
P10002	LENS-28TWP	Lens TWP glass for 28W
P10000	LENS-40TWP	Lens TWP glass for 38W-60W
P10001	LENS-60TWP	Lens TWP glass for 90W-120W

## 19

## SLIM WALL PACK



SKU Code	Product Code	Description
P10074	MT-SB-SWP/DB	Swivel Bracket for SWP -Dark Bronze
P10005	MT-SB-SWP/BK	Swivel Bracket for SWP -Black
P10019	MT-SB-SWP/WH	Swivel Bracket for SWP -White
P10076	MT-SF-SWP/DB	Slp Fitter Mount for SWP-Dark Bronze
P10007	MT-SF-SWP/BK	Slp Fitter Mount for SWP-Black
P10021	MT-SF-SWP/WH	Slp Fitter Mount for SWP-White
P10075	MT-KNC-SWP/DB	3/4" NPT Knuckle Mount for SWP - DB
P10006	MT-KNC-SWP/BK	3/4" NPT Knuckle Mount for SWP - BK
P10020	MT-KNC-SWP/WH	3/4" NPT Knuckle Mount for SWP - WH

[Fits Slim Wall Pack](#)

## 20

FLOOD LIGHT  
Mounting Arm



















SKU Code	Product Code	Description
K209226	MT-FDL/SF	Slip Fitter with Adaptor Black

[Mounting arm for flood light](#)  
Item#7783, 7784, 7785, 7786, 7787, 7788

## 21

## SLIM AREA LIGHT



SKU Code	Product Code	Description
 *K134115	PLT/SDB/SWC	Motion/Photocell 0-10V 3X C Lens for (29-100W) in Dark Bronze
*K134116	PLT/SDB/SWD	Motion/Photocell 0-10V 2X D Lens for (29-100W) in Dark Bronze
 *K135115	PLT/SWH/SWC	Motion/Photocell 0-10V 3X C Lens for (29-100W) in White
*K135116	PLT/SWH/SWD	Motion/Photocell 0-10V 2X D Lens for (29-100W) in White
 *K136115	PLT/LDB/SWC	Motion/Photocell 0-10V 3X C Lens for (180-360W) in Dark Bronze
*K136116	PLT/LDB/SWD	Motion/Photocell 0-10V 2X D Lens for (180-360W) in Dark Bronze
 *K137115	PLT/LWH/SWC	Motion/Photocell 0-10V 3X C Lens for (180-360W) in White
*K137116	PLT/LWH/SWD	Motion/Photocell 0-10V 2X D Lens for (180-360W) in White
 *K136178	PLT/LDB/9SWC	Remote Controllable Sensor 0-10V 3X C Lens (180-360W) Dark Bronze
*K136179	PLT/LDB/9SWD	Remote Controllable Sensor 0-10V 2X D Lens (180-360W) Dark Bronze
 *K137178	PLT/LWH/9SWC	Remote Controllable Sensor 0-10V 3X C Lens (180-360W) White
*K137179	PLT/LWH/9SWD	Remote Controllable Sensor 0-10V 2X D Lens (180-360W) White
 *K134178	PLT/SDB/9SWC	Remote Controllable Sensor 0-10V 3X C Lens (29-100W) Dark Bronze
*K134179	PLT/SDB/9SWD	Remote Controllable Sensor 0-10V 2X D Lens (29-100W) Dark Bronze
 *K135178	PLT/SWH/9SWC	Remote Controllable Sensor 0-10V 3X C Lens (29-100W) White
*K135179	PLT/SWH/9SWD	Remote Controllable Sensor 0-10V 2X D Lens (29-100W) White
 P10164	SEN-SRP280	Remote Programmer
 *K141030	REC3PLK/PHO	Receptacle Mount/Photocell
 P10053	SEN-PHO-LK-MT/SRT	Twist-Lock Mount Shorting Cap
 P10141	REC3PLK	Receptacle Mount -3 prong
 P10142	REC7PLK	Receptacle Mount -7 prong
 P10205	GSB-SAL-S/DB	Back Glare Shields for Small SAL (DB)
P10206	GSB-SAL-S/WH	Back Glare Shields for Small SAL (WH)
 P10207	GSB-SAL-L/DB	Back Glare Shields for Large SAL (DB)
P10208	GSB-SAL-L/WH	Back Glare Shields for Large SAL (WH)
 P10213	GSF-SAL-S/DB	Front Glare Shields for Small SAL (DB)
 P10214	GSF-SAL-S/WH	Front Glare Shields for Small SAL (WH)
 P10215	GSF-SAL-L/DB	Front Glare Shields for Large SAL (DB)
P10216	GSF-SAL-L/WH	Front Glare Shields for Large SAL (WH)

22

## SLIM AREA LIGHT



SKU Code	Product Code	Description
P10127	LENS-SAL-SMALL-V	Type 5 Lens (29-100W)
P10128	LENS-SAL-LARGE-V/DB	Type 5 Lens (180-360W) DB
P10131	LENS-SAL-LARGE-V/WH	Type 5 Lens (180-360W) White
P10237	LENS-SAL-3X3-IV	Lens SAL 3X3 Type IV short
P10238	LENS-SAL-2X5-IV	Lens SAL 2X5 Type IV short
K238X2	LENS-SAL-180-IV	150W/180W Type IV Lens Kit
K238X3	LENS-SAL-240-IV	240W Type IV Lens Kit
K237X4	LENS-SAL-360-IV	360W Type IV Lens Kit
P10101	MT-SAL/SF/DB	Slip Fitter Mount for SAL (DB)
P10209	MT-SAL/SF/BK	Slip Fitter Mount for SAL (BK)
P10102	MT-SAL/SF/WH	Slip Fitter Mount for SAL (WH)
P10103	MT-SAL/SB/DB	Swivel Bracket Mount for SAL(DB)
P10210	MT-SAL/SB/BK	Swivel Bracket Mount for SAL(BK)
P10104	MT-SAL/SB/WH	Swivel Bracket Mount for SAL (WH)
P10105	MT-SAL/EA6/DB	6" Extruded Arm for SAL (DB)
P10211	MT-SAL/EA6/BK	6" Extruded Arm for SAL (BK)
P10106	MT-SAL/EA6/WH	6" Extruded Arm for SAL (WH)
P10107	MT-SAL/DPB/DB	Dual Pendant Box 3/4" NPT (DB)
P10108	MT-SAL/DPB/WH	Dual Pendant Box 3/4" NPT (WH)
P10111	MT-SAL/YK9/DB	9" Yoke Mount 29-100W (DB)
P10112	MT-SAL/YK9/WH	9" Yoke Mount 29-100W (WH)
P10113	MT-SAL/YK15/DB	15" Yoke Mount 180-360W (DB)
P10114	MT-SAL/YK15/WH	15" Yoke Mount 180-360W (WH)
P10198	MT-SAL/WM/DB	Wall Mount Small Slim Area Light (DB)
P10199	MT-SAL/WM/WH	Wall Mount Small Slim Area Light (WH)
P10119	MT-SAL/4PA/DB	4" Round pole adaptor for SAL (DB)
P10120	MT-SAL/5PA/DB	5" Round pole adaptor for SAL (DB)
P10121	MT-SAL/6PA/DB	6" Round pole adaptor for SAL (DB)
P10122	MT-SAL/4PA/WH	4" Round pole adaptor for SAL (WH)
P10123	MT-SAL/5PA/WH	5" Round pole adaptor for SAL (WH)
P10124	MT-SAL/6PA/WH	6" Round pole adaptor for SAL (WH)
K134185	PLT/SDB/100BA480	347-480V to 277V Step Down Driver for SAL 100W and under with Dark Bronze Mounting Plate
K135186	PLT/SWH/100BA480	347-480V to 277V Step Down Driver for SAL 100W and under with White Mounting Plate

\*An additional installation fee will be applied per fixture

23

## JELLY JAR VAPOR TIGHT



SKU Code	Product Code	Description
P10169	LENS-VTJ	Lens- Vapor Tight Jelly Jar

24

SECURITY FLOOD LIGHT  
Motion Sensor (2 heads)

SKU Code	Product Code	Description
P10118	SEN-ES-180NX3-2VR/BK	Motion Sensor for 2-headed Security Light

25

## DUSK TO DAWN



SKU Code	Product Code	Description
P10054	MT-DEA16	Dusk to Dawn 16" Extension Arm
P10030	SEN-PHO-LK-MT/MV	Twist-Lock Mount Photocell 120-277V
P10053	SEN-PHO-LK-MT/SRT	Twist-Lock Mount Shorting Cap

## 26

## PIR PHOTOCELL/MOTION SENSOR



SKU Code	Product Code	Description
P10038	SEN-LOS-501-SED	Motion/Photocell On-Off 2X D Lens
P10039	SEN-LOS-501-SPD	Motion/Photocell IP66 On-Off 2X D Lens
P10040	SEN-LOS-501-SEC	Motion/Photocell On-Off 3X C Lens
P10041	SEN-LOS-501-SPC	Motion/Photocell IP66 On-Off 3X C Lens
P10042	SEN-LOD-500-SED	Motion/Photocell 0-10V 2X D Lens
P10043	SEN-LOD-500-SPD	Motion/Photocell IP66 0-10V 2X D Lens
P10044	SEN-LOD-500-SEC	Motion/Photocell 0-10V 3X C Lens
P10045	SEN-LOD-500-SPC	Motion/Photocell IP66 0-10V 3X C Lens

\*An additional installation fee will be applied per fixture





# REFERENCE

---

Turning Light into Savings ▶▶▶

[www.mynaturalLED.com](http://www.mynaturalLED.com)



## LED lamp shape



Elevator



MR16



BA11



A19



ST19



G25



PAR30



BR/R



PL



TUBE



G4/G9



CORN

## LED color temperature



Soft White - 2700K



Warm White - 3000K



Cool White - 4000K

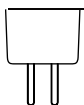


Daylight - 5000K

## LED lamp base



BA15s/ BA15d



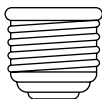
GU5.3



E12



GU24



E26



EX39



Tube BiPin



Tube Single  
FA8



Tube H0  
R17d

## LED CRI



**CRI80**



**CRI90**

Color Rendering Index (CRI) describes how an object appears to the human eye based on ideal or natural light source. The CRI is an index, a measure, that tells something about how colors are represented by light coming from a certain light bulb, compared to how the colors are rendered with the light coming from a reference illuminant.

The CRI reports a unit less value, that can differ between 0 and 100. The value 100 means that there is no difference in color rendition between the light of the observed light bulb and the light of the reference illuminant. Lighting with a CRI of 85 to 90 is typically “excellent” at rendering colors of objects while CRI90 or greater are “superior”.

## IP (Ingress Protection) Chart

### First Digit - Solids

Level	Object Size Protected Against	Effective Against
0	Not Protected	No protection against contact and ingress of objects.
1	>50mm	Any large surface of the body, such as the back of the hand, but no protection against deliberate contact with a body part.
2	>12.5mm	Fingers or similar objects.
3	>2.5mm	Tools, thick wires, etc.
4	>1mm	Most wires, screws, etc.
5	Dust Protected	Ingress of dust is not entirely prevented, it must not enter in sufficient quantity to interfere with the satisfactory operation of the equipment; complete protection against contact.
6	Dust Tight	No ingress of dust; complete protection against contact.

### Second Digit - Liquids

Level	Object Size Protected Against	Effective Against
0	Not Protected	No protection against contact and ingress of objects.
1	Dripping water	Dripping water (vertically falling drops) shall have no harmful effect.
2	Dripping water when tilted up to 15°	Vertically dripping water shall have no harmful effect when the enclosure is tilted at an angle up to 15° from its normal position.
3	Spraying water	Water falling as a spray at any angle up to 60° from the vertical shall have no harmful effect.
4	Splashing water	Water splashing against the enclosure from any direction shall have no harmful effect.
5	Water jets	Water projected by a nozzle (6.3mm) against enclosure from any direction shall have no harmful effects.
6	Powerful water jets	Water projected in powerful jets (12.5mm nozzle) against the enclosure from any direction shall have no harmful effects.
7	Immersion up to 1m	Ingress of water in harmful quantity shall not be possible when the enclosure is immersed in water under defined conditions of pressure and time (up to 1 m of submersion).
8	Immersion beyond 1m	The equipment is suitable for continuous immersion in water under conditions which shall be specified by the manufacturer. Normally, this will mean that the equipment is hermetically sealed. However, with certain types of equipment, it can mean that water can enter but only in such a manner that it produces no harmful effects.



## IP65

The IP Code consists of letters IP followed by two-digits. The first digit represents Solids Protection & the second digit represents Liquid Protection. It classifies the degrees of protection against dust, accidental contact, and water in electrical enclosures. The standard aims to provide users more detailed information other than a single phrase Weatherproof.

- 6:** Protected from total dust ingress.
- 5:** Protected from low pressure water jets from any direction.



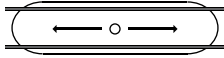
## IP66

The IP Code consists of letters IP followed by two-digits. The first digit represents Solids Protection & the second digit represents Liquid Protection. It classifies the degrees of protection against dust, accidental contact, and water in electrical enclosures. The standard aims to provide users more detailed information other than a single phrase Weatherproof.

- 6:** Protected from total dust ingress.
- 6:** Powerful water jets against enclosure from any direction

# LED lighting distribution types

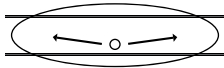
## Type I



The type I distribution is great for lighting walkways, paths and sidewalks. This type of lighting is meant to be placed near the center of the pathway. This provides adequate lighting for smaller pathways.

Type I is a two-way lateral distribution having a preferred lateral width of 15 degrees in the cone of maximum candlepower. The two principal light concentrations are in opposite directions along a roadway. This type is generally applicable to a luminaire location near the center of a roadway where the mounting height is approximately equal to the roadway width.

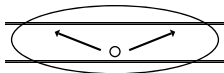
## Type II



The type II distribution is used for wide walkways, on ramps and entrance roadways, as well as other long, narrow lighting. This type is meant for lighting larger areas and usually is located near the roadside. You'll find this type of lighting mostly on smaller side streets or jogging paths.

Type II light distributions have a preferred lateral width of 25 degrees. They are generally applicable to luminaires located at or near the side of relatively narrow roadways, where the width of the roadway does not exceed 1.75 times the designed mounting height.

## Type III

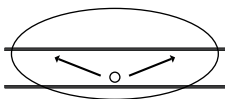


The type III distribution is meant for roadway lighting, general parking areas and other areas where a larger area of lighting is required. Type III lighting needs to be placed to the side of the area, allowing the light to project outward and fill the area. This produces a filling light flow.

Type III light distributions have a preferred lateral width of 40 degrees. This distribution is intended for luminaires mounted at or near the side of medium width roadways or areas, where the width of the roadway or area does not exceed 2.75 times the mounting height.



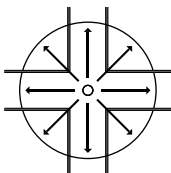
## Type IV



The type IV distribution produces a semicircular light meant for mounting on the sides of buildings and walls. It's best for illuminating the perimeter of parking areas and businesses. The intensity of the Type IV lighting has the same intensity at angles from 90 degrees to 270 degrees.

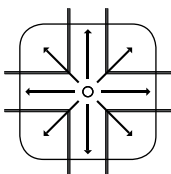
Type IV light distributions have a preferred lateral width of 60 degrees. This distribution is intended for side-of-road mounting and is generally used on wide roadways where the roadway width does not exceed 3.7 times the mounting height.

## Type V



Type V produces a circular distribution that has the same intensity at all angles. This distribution has a circular symmetry of candlepower that is essentially the same at all lateral angles. It is intended for luminaire mounting at or near center of roadways, center islands of parkway, and intersections. It is also meant for large, commercial parking lot lighting as well as areas where sufficient, evenly distributed light is necessary.

## Type VS (Square)



Type VS produces a square distribution that has the same intensity at all angles. Type 5S (square) LED Distribution pattern This distribution has a square symmetry of candlepower that is essentially the same at all lateral angles. It is intended for luminaire mounting at or near center of roadways, center islands of parkway, and intersections. It is also meant for large, commercial parking lot lighting as well as areas where sufficient, evenly distributed light is necessary. Type VS is used where the light pattern needs a more defined edge.





## CONTACTS

### United States



#### California, USA

2000 S. Grove Ave, Bldg B, Ontario,  
CA 91761

(T): 909-930-6868

(F): 909-930-9988



#### North Carolina, USA

2511 Reliance Ave,  
Apex, NC 27539

(T): 919-363-3936

(F): 919-363-3993



#### Texas, USA

11011 Regency Crest Drive, Ste 800, Dallas,  
TX 75238

(T): 214-341-7992

### Canada



#### Langley, Canada

5514 275th Street,  
Langley, BC V4W 3X7

(T): 604-857-8818

(F): 604-625-7199

# naturaLED®

## Locations:

---



### California, USA

2000 S. Grove Ave, Bldg B,  
Ontario, CA 91761



### North Carolina, USA

2511 Reliance Ave,  
Apex, NC 27539



### Texas, USA

11011 Regency Crest Drive, Ste 800,  
Dallas, TX 75238



### Langley, Canada

5514 275th Street,  
Langley, BC V4W 3X7



[www.naturaLED.com](http://www.naturaLED.com)