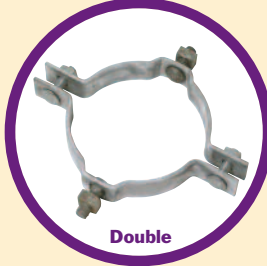


Single



Double

## Offset Pole Band

- Offset Pole Bands are used for dead-ending, guying, and mounting secondary racks on metal poles, pipe masts, or conduit.
- Each Pole Band Assembly contains two  $\frac{1}{4}$ " x  $1\frac{1}{2}$ " stamped brackets, two  $\frac{1}{2}$ " x 2" Carriage Bolts with Regular Square Nuts for clamping brackets together, and (one or two)  $\frac{3}{8}$ " x 2" Carriage Bolts with Regular Square Nuts for attaching racks.
- All components are hot dip galvanized to meet ASTM Specification A153.

### Single Offset Pole Band

| PART NUMBER | POLE DIAMETER RANGE     | CARTON QTY |
|-------------|-------------------------|------------|
| 1118        | 4 $\frac{1}{2}$ " to 5" | 20         |
| 1113        | 6" to 6 $\frac{3}{4}$ " | 15         |
| 1117        | 7" to 7 $\frac{3}{4}$ " | 10         |
| 1114        | 8" to 8 $\frac{3}{4}$ " | 10         |

### Double Offset Pole Band

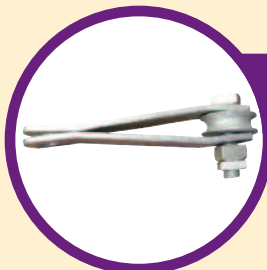
| PART NUMBER | POLE DIAMETER RANGE     | CARTON QTY |
|-------------|-------------------------|------------|
| 1111        | 6" to 6 $\frac{3}{4}$ " | 10         |
| 1116        | 7" to 7 $\frac{3}{4}$ " | 10         |
| 1112        | 8" to 8 $\frac{3}{4}$ " | 10         |



## Adjustable Pole Band

- Adjustable Pole Bands provide attachment points for guys and suspension insulators.
- Each Adjustable Pole Band Assembly contains four  $\frac{1}{4}$ " x 4" stampings, four  $\frac{3}{4}$ " threaded studs, and sixteen  $\frac{3}{4}$ " Regular Square Nuts.
- Each stamping has a  $\frac{9}{16}$ " square hole.
- All components are hot dip galvanized to meet ASTM Specification A153.

| PART NUMBER | POLE DIAMETER RANGE                     | CARTON QTY |
|-------------|---|------------|
| 3108        | 7" to 9 $\frac{1}{2}$ "                 | 2          |
| 3110        | 8" to 11"                               | 2          |
| 3109        | 9 $\frac{1}{2}$ " to 13 $\frac{1}{2}$ " | 2          |
| 3111        | 12" to 16"                              | 2          |

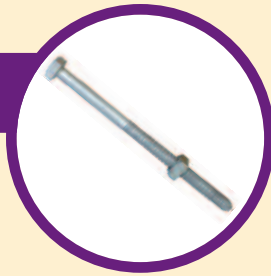


## Pole Band Link Assembly

- Attaches to Adjustable Pole Bands to provide an attachment point for Guy Wires.
- Comprised of two mating stamped brackets, a casted roller, and a bolt/nut/locknut assembly.
- All components are hot dip galvanized per ASTM Specification A153.

| PART NUMBER | DESCRIPTION               | CARTON QTY |
|-------------|---------------------------|------------|
| 1119        | Pole Band Link Assembly   | 10         |
| 1122        | Roller (only)             | 25         |
| 1123        | Set of Link Plates (only) | 20         |

## Square Head Machine Bolt



- Used for fastening poleline hardware to crossarms, poles, and other structures.
- $\frac{5}{8}$ ",  $\frac{3}{4}$ ",  $\frac{7}{8}$ ", and 1" bolts have a formed "cone point" to ease attachment of nut.
- Bolt head marking (ABI) appears on head of each bolt, and is registered with the U.S. Patent and Trademark Office, per the Fastener Insignia Register Act.
- Hot dip galvanized to meet ASTM Specification A153.
- Supplied with attached square nut unless noted otherwise.
- Minimum tensile strength:
 

|                              |                              |
|------------------------------|------------------------------|
| $\frac{1}{4}$ " - 1,900 lbf  | $\frac{3}{8}$ " - 4,650 lbf  |
| $\frac{1}{2}$ " - 8,500 lbf  | $\frac{5}{8}$ " - 13,550 lbf |
| $\frac{3}{4}$ " - 20,050 lbf | $\frac{7}{8}$ " - 27,700 lbf |
| 1" - 36,350 lbf              |                              |
- Recommended torque value:
 

|                             |                             |                            |
|-----------------------------|-----------------------------|----------------------------|
| $\frac{1}{4}$ " - 4 ft lb   | $\frac{3}{8}$ " - 15 ft lb  | $\frac{1}{2}$ " - 37 ft lb |
| $\frac{5}{8}$ " - 73 ft lb  | $\frac{3}{4}$ " - 130 ft lb |                            |
| $\frac{7}{8}$ " - 210 ft lb | 1" - 314 ft lb              |                            |

| PART NUMBER | SIZE                                | THREAD LENGTH (min.) | INNER PACK QTY | CARTON QTY |
|-------------|-------------------------------------|----------------------|----------------|------------|
| 648         | $\frac{1}{4}$ " x 1"                | 1"                   | 100            | 1,600      |
| 647         | $\frac{3}{8}$ " x 1"                | 1"                   | 100            | 400        |
| 649         | $\frac{3}{8}$ " x 1 $\frac{1}{2}$ " | 1 $\frac{1}{2}$ "    | 50             | 400        |
| 650         | $\frac{3}{8}$ " x 2"                | 2"                   | 50             | 200        |
| 651         | $\frac{3}{8}$ " x 2 $\frac{1}{2}$ " | 2 $\frac{1}{2}$ "    | 50             | 200        |
| 652         | $\frac{3}{8}$ " x 3"                | 3"                   | 50             | 200        |
| 8211        | $\frac{3}{8}$ " x 4"                | 3 $\frac{1}{16}$ "   | 50             | 200        |
| 661         | $\frac{3}{8}$ " x 4 $\frac{1}{2}$ " | 3"                   |                | 50         |
| 8212        | $\frac{3}{8}$ " x 5"                | 4 $\frac{1}{16}$ "   |                | 100        |
| 8213        | $\frac{3}{8}$ " x 5 $\frac{1}{2}$ " | 5 $\frac{3}{16}$ "   |                | 100        |
| 6660        | $\frac{3}{8}$ " x 6"                | 3"                   |                | 100        |
| 8216        | $\frac{3}{8}$ " x 7"                | 4"                   |                | 100        |
| 236         | $\frac{1}{2}$ " x 1"                | 1"                   |                | 100        |
| 8202        | $\frac{1}{2}$ " x 1 $\frac{1}{4}$ " | 1 $\frac{1}{4}$ "    |                | 100        |
| 8920        | $\frac{1}{2}$ " x 1 $\frac{1}{2}$ " | 1 $\frac{1}{4}$ "    |                | 100        |
| 251         | $\frac{1}{2}$ " x 1 $\frac{3}{4}$ " | 1 $\frac{3}{4}$ "    |                | 100        |
| 10035       | $\frac{1}{2}$ " x 2"                | 2"                   |                | 100        |
| 8203*       | $\frac{1}{2}$ " x 2 $\frac{1}{2}$ " | 2 $\frac{1}{2}$ "    |                | 100        |
| 8239        | $\frac{1}{2}$ " x 2 $\frac{1}{2}$ " | 2 $\frac{1}{2}$ "    |                | 100        |
| 10036       | $\frac{1}{2}$ " x 3"                | 2 $\frac{5}{8}$ "    |                | 100        |
| 10037       | $\frac{1}{2}$ " x 4"                | 3 $\frac{5}{8}$ "    |                | 100        |
| 8208        | $\frac{1}{2}$ " x 4 $\frac{1}{2}$ " | 4 $\frac{1}{8}$ "    |                | 100        |
| 10038       | $\frac{1}{2}$ " x 5"                | 4 $\frac{5}{8}$ "    |                | 100        |
| 8209        | $\frac{1}{2}$ " x 6"                | 6"                   |                | 100        |
| 7930        | $\frac{1}{2}$ " x 7"                | 4"                   |                | 100        |
| 8110        | $\frac{1}{2}$ " x 8"                | 6"                   |                | 100        |
| 8922        | $\frac{1}{2}$ " x 9"                | 4"                   |                | 75         |
| 8111        | $\frac{1}{2}$ " x 10"               | 6"                   |                | 75         |
| 8112        | $\frac{1}{2}$ " x 12"               | 6"                   |                | 50         |
| 8210        | $\frac{1}{2}$ " x 14"               | 6"                   |                | 50         |
| 8924        | $\frac{1}{2}$ " x 16"               | 6"                   |                | 40         |
| 8925        | $\frac{1}{2}$ " x 18"               | 6"                   |                | 40         |
| 8927        | $\frac{1}{2}$ " x 20"               | 6"                   |                | 25         |
| 8932        | $\frac{1}{2}$ " x 22"               | 6"                   |                | 25         |
| 8934        | $\frac{1}{2}$ " x 24"               | 6"                   |                | 25         |
| 8117        | $\frac{5}{8}$ " x 1"                | 1"                   |                | 50         |
| 8120        | $\frac{5}{8}$ " x 1 $\frac{1}{4}$ " | 1 $\frac{1}{4}$ "    |                | 100        |
| 8121        | $\frac{5}{8}$ " x 1 $\frac{1}{2}$ " | 1 $\frac{1}{2}$ "    |                | 100        |
| 8119        | $\frac{5}{8}$ " x 1 $\frac{3}{4}$ " | 1 $\frac{3}{4}$ "    |                | 100        |
| 8122        | $\frac{5}{8}$ " x 2"                | 2"                   |                | 100        |
| 8123        | $\frac{5}{8}$ " x 2 $\frac{1}{2}$ " | 2 $\frac{1}{8}$ "    |                | 100        |
| 8124        | $\frac{5}{8}$ " x 3"                | 2 $\frac{5}{8}$ "    |                | 50         |
| 8118        | $\frac{5}{8}$ " x 3 $\frac{1}{2}$ " | 3 $\frac{1}{2}$ "    |                | 50         |
| 8125        | $\frac{5}{8}$ " x 4"                | 3 $\frac{5}{8}$ "    |                | 100        |
| 8127        | $\frac{5}{8}$ " x 4 $\frac{1}{2}$ " | 4 $\frac{1}{2}$ "    |                | 50         |
| 8126        | $\frac{5}{8}$ " x 5"                | 4 $\frac{5}{8}$ "    |                | 20         |
| 8204        | $\frac{5}{8}$ " x 5 $\frac{1}{2}$ " | 5 $\frac{1}{8}$ "    |                | 100        |
| 8214        | $\frac{5}{8}$ " x 6"                | 6"                   |                | 50         |
| 8215        | $\frac{5}{8}$ " x 7"                | 6"                   |                | 50         |
| 8220        | $\frac{5}{8}$ " x 8"                | 6"                   |                | 50         |
| 8926        | $\frac{5}{8}$ " x 9"                | 6"                   |                | 50         |
| 8222        | $\frac{5}{8}$ " x 10"               | 6"                   |                | 40         |

\* Does Not Include Square Nut

\* Please add "SS" to the part number for Stainless Steel (#304).

**Square Head Machine Bolt** (continued)

| PART NUMBER | SIZE       | THREAD LENGTH (min.) | CARTON QTY |
|-------------|------------|----------------------|------------|
| 8224        | 5/8" x 12" | 6"                   | 40         |
| 8226        | 5/8" x 14" | 6"                   | 40         |
| 8228        | 5/8" x 16" | 6"                   | 30         |
| 8230        | 5/8" x 18" | 6"                   | 30         |
| 8232        | 5/8" x 20" | 6"                   | 20         |
| 8234        | 5/8" x 22" | 6"                   | 20         |
| 8236        | 5/8" x 24" | 6"                   | 20         |
| 10048       | 5/8" x 26" | 6"                   | 20         |
| 8237        | 5/8" x 28" | 6"                   | 20         |
| 8235        | 5/8" x 30" | 6"                   | 15         |
| 8928        | 5/8" x 32" | 6"                   | 15         |
| 8929        | 5/8" x 34" | 6"                   | 15         |
| 8931        | 5/8" x 36" | 6"                   | 15         |
| 8935        | 5/8" x 40" | 6"                   | 5          |
| 8150        | 3/4" x 2"  | 2"                   | 50         |
| 8151        | 3/4" x 3"  | 2 5/8"               | 50         |
| 8152        | 3/4" x 4"  | 3 5/8"               | 50         |
| 8153        | 3/4" x 6"  | 6"                   | 50         |
| 8154        | 3/4" x 7"  | 6"                   | 50         |
| 8238        | 3/4" x 8"  | 6"                   | 40         |
| 8240        | 3/4" x 10" | 6"                   | 30         |
| 8242        | 3/4" x 12" | 6"                   | 20         |
| 8244        | 3/4" x 14" | 6"                   | 20         |
| 8246        | 3/4" x 16" | 6"                   | 20         |
| 8248        | 3/4" x 18" | 6"                   | 20         |
| 8250        | 3/4" x 20" | 6"                   | 20         |
| 8252        | 3/4" x 22" | 6"                   | 10         |
| 8254        | 3/4" x 24" | 6"                   | 10         |
| 8255        | 3/4" x 26" | 6"                   | 10         |
| 8259        | 3/4" x 28" | 6"                   | 10         |
| 8930        | 3/4" x 30" | 6"                   | 10         |
| 82623       | 3/4" x 32" | 6"                   | 10         |
| 82624       | 3/4" x 34" | 6"                   | 10         |
| 82625       | 3/4" x 36" | 6"                   | 10         |
| 82410       | 7/8" x 3"  | 2"                   | 50         |
| 8970        | 7/8" x 12" | 6"                   | 15         |
| 8971        | 7/8" x 14" | 6"                   | 15         |
| 8972        | 7/8" x 16" | 6"                   | 15         |
| 8256        | 7/8" x 18" | 6"                   | 10         |
| 8257        | 7/8" x 20" | 6"                   | 8          |
| 8973        | 7/8" x 22" | 6"                   | 8          |
| 8606        | 7/8" x 24" | 6"                   | 8          |
| 8607        | 7/8" x 26" | 6"                   | 8          |
| 8608        | 7/8" x 28" | 6"                   | 8          |
| 8609        | 7/8" x 30" | 6"                   | 8          |
| 8610        | 7/8" x 32" | 6"                   | 8          |
| 8611        | 7/8" x 34" | 6"                   | 8          |
| 8612        | 7/8" x 36" | 6"                   | 8          |
| 8620        | 7/8" x 38" | 6"                   | 5          |
| 8622        | 7/8" x 40" | 6"                   | 5          |
| 8624        | 7/8" x 42" | 6"                   | 5          |
| 8626        | 7/8" x 44" | 6"                   | 5          |
| 8628        | 7/8" x 46" | 6"                   | 5          |
| 8629        | 7/8" x 48" | 6"                   | 5          |
| 8630        | 7/8" x 50" | 6"                   | 5          |
| 8292        | 1" x 12"   | 6"                   | 12         |
| 8293        | 1" x 14"   | 6"                   | 12         |
| 8294        | 1" x 16"   | 6"                   | 7          |
| 8297        | 1" x 18"   | 6"                   | 7          |
| 8295        | 1" x 20"   | 6"                   | 7          |
| 8298        | 1" x 22"   | 6"                   | 7          |

\* Please add "SS" to the part number for Stainless Steel (#304).

**Square Head Machine Bolt** (continued)

| PART NUMBER | SIZE     | THREAD LENGTH (min.) | CARTON QTY |
|-------------|----------|----------------------|------------|
| 8299        | 1" x 24" | 6"                   | 7          |
| 82995       | 1" x 26" | 6"                   | 6          |
| 82994       | 1" x 28" | 6"                   | 6          |
| 82996       | 1" x 30" | 6"                   | 7          |
| 82999       | 1" x 32" | 6"                   | 7          |
| 83000       | 1" x 34" | 6"                   | 7          |
| 83001       | 1" x 36" | 6"                   | 7          |

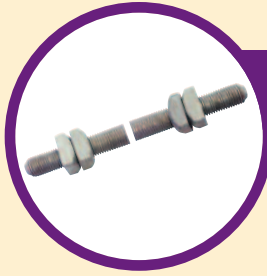
\* Please add "SS" to the part number for Stainless Steel (#304).

**A Cable Suspension Bolt**

- Used to secure cable suspension clamps and other poleline brackets and clamps.
- Each square head bolt is supplied with two attached regular square nuts.
- Bolt provided with cone point to ease starting.
- Bolt head marking (ABI) appears on head of each bolt, and is registered with the U.S. Patent Office per the Fastener Insignia Act. Tensile load designator mark (i.e. 10M, 16M, 25M) also appears on head of each bolt.
- A minimum of six inches of thread per bolt.
- Hot dip galvanized to meet ASTM Specification A153.
- Minimum tensile strength:  
 $\frac{5}{8}$ " - 13,550 lbf     $\frac{3}{4}$ " - 20,050 lbf  
1" - 36,350 lbf
- Recommended torque value:  
 $\frac{5}{8}$ " - 73 ft lb     $\frac{3}{4}$ " - 130 ft lb  
1" - 314 ft lb



| PART NUMBER | SIZE                  | THREAD LENGTH (min.) | BELL NUMBER | CARTON QTY |
|-------------|-----------------------|----------------------|-------------|------------|
| 8280        | $\frac{5}{8}$ " x 8"  | 6"                   | 400013645   | 50         |
| 8281        | $\frac{5}{8}$ " x 10" | 6"                   | 400013652   | 40         |
| 8282        | $\frac{5}{8}$ " x 12" | 6"                   | 400013660   | 40         |
| 8283        | $\frac{5}{8}$ " x 14" | 6"                   | 400013678   | 40         |
| 8284        | $\frac{5}{8}$ " x 16" | 6"                   | 400013686   | 30         |
| 8285        | $\frac{5}{8}$ " x 18" | 6"                   | 400013694   | 30         |
| 8286        | $\frac{5}{8}$ " x 20" | 6"                   | 400013702   | 20         |
| 8287        | $\frac{5}{8}$ " x 22" | 6"                   | 400013710   | 20         |
| 8288        | $\frac{5}{8}$ " x 24" | 6"                   | 400314274   | 20         |
| 8289        | $\frac{5}{8}$ " x 26" | 6"                   |             | 20         |
| 8300        | $\frac{3}{4}$ " x 10" | 6"                   |             | 30         |
| 8301        | $\frac{3}{4}$ " x 12" | 6"                   | 400013736   | 20         |
| 8302        | $\frac{3}{4}$ " x 14" | 6"                   | 400013744   | 20         |
| 8304        | $\frac{3}{4}$ " x 16" | 6"                   | 400013751   | 20         |
| 8305        | $\frac{3}{4}$ " x 18" | 6"                   | 400013769   | 20         |
| 8306        | $\frac{3}{4}$ " x 24" | 6"                   |             | 10         |
| 8315        | $\frac{3}{4}$ " x 20" | 6"                   |             | 20         |
| 8307        | $\frac{3}{4}$ " x 24" | 6"                   |             | 10         |
| 8308        | $\frac{3}{4}$ " x 26" | 6"                   |             | 10         |
| 8160        | 1" x 12"              | 6"                   |             | 12         |
| 8161        | 1" x 14"              | 6"                   |             | 12         |
| 8162        | 1" x 16"              | 6"                   |             | 10         |
| 8163        | 1" x 18"              | 6"                   |             | 10         |



## Double Arming Bolt

- Used to secure two cable suspension clamps or other attachments on opposite sides of utility pole.
- Each Double Arming Bolt is supplied with four attached square nuts.
- Bolt provided with cone point at each end to ease starting.
- Hot dip galvanized to meet ASTM Specification A153.
- Minimum tensile strength:
 

|                              |                              |
|------------------------------|------------------------------|
| $\frac{3}{8}$ " - 6,650 lbf  | $\frac{5}{8}$ " - 13,550 lbf |
| $\frac{1}{2}$ " - 8,500 lbf  | $\frac{3}{4}$ " - 20,050 lbf |
| $\frac{7}{8}$ " - 27,700 lbf | 1" - 36,350 lbf              |
- Recommended torque value:
 

|                             |                             |
|-----------------------------|-----------------------------|
| $\frac{3}{8}$ " - 15 ft lb  | $\frac{1}{2}$ " - 37 ft lb, |
| $\frac{5}{8}$ " - 73 ft lb  | $\frac{3}{4}$ " - 130 ft lb |
| $\frac{7}{8}$ " - 210 ft lb | 1" - 314 ft lb              |

| PART NUMBER              | SIZE                  | CARTON QTY |
|--------------------------|-----------------------|------------|
| 59750                    | $\frac{3}{8}$ " x 8"  | 25         |
| 8390                     | $\frac{1}{2}$ " x 6"  | 50         |
| 8395                     | $\frac{1}{2}$ " x 8"  | 25         |
| 59752                    | $\frac{1}{2}$ " x 12" | 25         |
| 59755                    | $\frac{1}{2}$ " x 18" | 25         |
| 5950 (5950-2*)           | $\frac{5}{8}$ " x 10" | 40         |
| 5952 (5952-2*)           | $\frac{5}{8}$ " x 12" | 40         |
| 5954                     | $\frac{5}{8}$ " x 14" | 35         |
| 5956 (5956-2*)           | $\frac{5}{8}$ " x 16" | 30         |
| 5958                     | $\frac{5}{8}$ " x 18" | 30         |
| 5960                     | $\frac{5}{8}$ " x 20" | 20         |
| 5962                     | $\frac{5}{8}$ " x 22" | 20         |
| 5964                     | $\frac{5}{8}$ " x 24" | 20         |
| 5966                     | $\frac{5}{8}$ " x 26" | 20         |
| 5968                     | $\frac{5}{8}$ " x 28" | 20         |
| 5970 (5970-2*)           | $\frac{5}{8}$ " x 30" | 15         |
| 5972                     | $\frac{5}{8}$ " x 32" | 15         |
| 5974                     | $\frac{5}{8}$ " x 34" | 15         |
| 5976 (5976-2*)           | $\frac{5}{8}$ " x 36" | 15         |
| 6009                     | $\frac{5}{8}$ " x 40" | 7          |
| 6705                     | $\frac{5}{8}$ " x 42" | 7          |
| 6706                     | $\frac{5}{8}$ " x 44" | 7          |
| 6707                     | $\frac{5}{8}$ " x 46" | 7          |
| 6105                     | $\frac{5}{8}$ " x 48" | 7          |
| 9997966                  | $\frac{5}{8}$ " x 60" | 5          |
| 59780                    | $\frac{3}{4}$ " x 6"  | 25         |
| 5975                     | $\frac{3}{4}$ " x 8"  | 25         |
| 5977                     | $\frac{3}{4}$ " x 10" | 30         |
| 5978                     | $\frac{3}{4}$ " x 12" | 20         |
| 5980                     | $\frac{3}{4}$ " x 14" | 20         |
| 5982                     | $\frac{3}{4}$ " x 16" | 20         |
| 5984                     | $\frac{3}{4}$ " x 18" | 20         |
| 5986 (5986-2*)           | $\frac{3}{4}$ " x 20" | 20         |
| 5988 (5988-2*)           | $\frac{3}{4}$ " x 22" | 10         |
| 5990 (5990-2*)           | $\frac{3}{4}$ " x 24" | 10         |
| 5992 (5992-2*)           | $\frac{3}{4}$ " x 26" | 10         |
| 5994 (5994-2*)           | $\frac{3}{4}$ " x 28" | 10         |
| 5996 (5996x6**)          | $\frac{3}{4}$ " x 30" | 10         |
| 5997 (5997-2*)           | $\frac{3}{4}$ " x 32" | 10         |
| 5998                     | $\frac{3}{4}$ " x 34" | 10         |
| 5999 (5999x6**)          | $\frac{3}{4}$ " x 36" | 10         |
| 6700                     | $\frac{3}{4}$ " x 38" | 5          |
| 6702 (6702-2*)           | $\frac{3}{4}$ " x 40" | 5          |
| 6104 (6104-2*, 6104x6**) | $\frac{3}{4}$ " x 42" | 5          |
| 6108 (6108-2*)           | $\frac{3}{4}$ " x 46" | 5          |
| 9997967                  | $\frac{3}{4}$ " x 60" | 5          |
| 6710                     | $\frac{7}{8}$ " x 12" | 15         |
| 6711                     | $\frac{7}{8}$ " x 14" | 15         |

\*Comes with 2 nuts.

\*\*Comes with 6 square nuts.

**Double Arming Bolt** (continued)

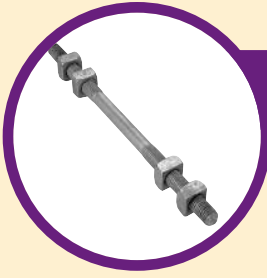
| PART NUMBER    | SIZE       | CARTON QTY |
|----------------|------------|------------|
| 6712           | 7/8" x 16" | 15         |
| 6713           | 7/8" x 18" | 10         |
| 6714           | 7/8" x 20" | 8          |
| 6715           | 7/8" x 22" | 8          |
| 6716           | 7/8" x 24" | 7          |
| 6717           | 7/8" x 26" | 7          |
| 6718           | 7/8" x 28" | 8          |
| 6719 (6719-2*) | 7/8" x 30" | 8          |
| 6720           | 7/8" x 32" | 8          |
| 6721           | 7/8" x 34" | 8          |
| 6722           | 7/8" x 36" | 8          |
| 6723           | 7/8" x 38" | 5          |
| 6724           | 7/8" x 40" | 5          |
| 6725           | 7/8" x 42" | 5          |
| 6726           | 7/8" x 44" | 5          |
| 6727           | 7/8" x 46" | 5          |
| 6728           | 7/8" x 48" | 5          |
| 6736           | 7/8" x 50" | 5          |
| 6750           | 1" x 12"   | 12         |
| 6751           | 1" x 14"   | 12         |
| 6752           | 1" x 16"   | 10         |
| 6753           | 1" x 18"   | 7          |
| 6754           | 1" x 20"   | 7          |
| 6755           | 1" x 22"   | 10         |
| 6756           | 1" x 24"   | 7          |
| 6757           | 1" x 26"   | 6          |
| 6758           | 1" x 28"   | 6          |
| 6759           | 1" x 30"   | 7          |
| 6760           | 1" x 32"   | 7          |
| 6762           | 1" x 36"   | 7          |

\*Comes with 2 nuts.

\*\*Comes with 6 square nuts.

• Bolts

**POLELINE HARDWARE**



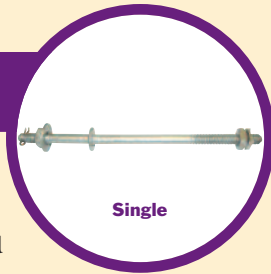
## B Cable Suspension Bolt

- Used to secure two cable suspension clamps at opposite sides of utility pole.
- Each threaded bolt is supplied with four attached regular square nuts.
- Bolt provided with cone point at each end to ease starting.
- Hot dip galvanized to meet ASTM Specification A153.
- Bolt marking (ABI) appears on unthreaded section of each bolt, and is registered with the U.S. Patent Office per the Fastener Insignia Act. Tensile load designator mark (i.e. 10M, 16M, 25M) also appears on unthreaded section of each bolt.
- Minimum tensile strength:  
 $\frac{5}{8}$ " – 13,550 lbf     $\frac{3}{4}$ " – 20,050 lbf
- Recommended torque value:  
 $\frac{5}{8}$ " – 73 ft lb     $\frac{3}{4}$ " – 130 ft lb

| PART NUMBER | SIZE                  | UNTHREADED SECTION | BELL NUMBER | CARTON QTY |
|-------------|-----------------------|--------------------|-------------|------------|
| 8258        | $\frac{5}{8}$ " x 8"  | 2"                 |             | 50         |
| 8260        | $\frac{5}{8}$ " x 10" | 4"                 | 400013777   | 40         |
| 8261        | $\frac{5}{8}$ " x 12" | 4"                 | 400013785   | 40         |
| 8262        | $\frac{5}{8}$ " x 14" | 2"                 | 400013793   | 35         |
| 8263        | $\frac{5}{8}$ " x 16" | 4"                 | 400013801   | 30         |
| 8264        | $\frac{5}{8}$ " x 18" | 6"                 | 400013819   | 30         |
| 8271        | $\frac{5}{8}$ " x 20" | 6"                 | 400013827   | 10         |
| 8272        | $\frac{5}{8}$ " x 22" | 6"                 | 400013835   | 20         |
| 8273        | $\frac{5}{8}$ " x 24" | 6"                 |             | 20         |
| 8274        | $\frac{5}{8}$ " x 26" | 6"                 |             | 20         |
| 8275        | $\frac{5}{8}$ " x 28" | 6"                 |             | 20         |
| 8276        | $\frac{5}{8}$ " x 30" | 6"                 |             | 15         |
| 8320        | $\frac{3}{4}$ " x 10" | 4"                 |             | 30         |
| 8321        | $\frac{3}{4}$ " x 12" | 4"                 | 400013850   | 20         |
| 8322        | $\frac{3}{4}$ " x 14" | 2"                 | 400013868   | 20         |
| 8323        | $\frac{3}{4}$ " x 16" | 4"                 | 400013876   | 20         |
| 8324        | $\frac{3}{4}$ " x 18" | 6"                 | 400013884   | 20         |
| 8325        | $\frac{3}{4}$ " x 20" | 6"                 | 400013892   | 20         |
| 8326        | $\frac{3}{4}$ " x 22" | 6"                 |             | 10         |
| 8327        | $\frac{3}{4}$ " x 24" | 6"                 |             | 10         |
| 8328        | $\frac{3}{4}$ " x 26" | 6"                 |             | 10         |
| 8329        | $\frac{3}{4}$ " x 28" | 6"                 |             | 10         |
| 8332        | $\frac{3}{4}$ " x 30" | 6"                 |             | 10         |

## Spool Bolt

- Spool Bolts are used in conjunction with spool insulators for side of pole installation.
- Double Upset Spool Bolts provide a 1<sup>5</sup>/<sub>8</sub>" offset from pole.
- Collars are forged instead of welded.
- Recommended torque value is 15 ft. lbs.
- Spool Bolts are equipped with a 5/8" Round Washer, 5/8" Regular Square Nut, and a Cotter Pin on one side. The other side is equipped with a 5/8" Concave Locknut and Regular Square Nut.
- All components are hot dip galvanized to meet ASTM Specification A153.

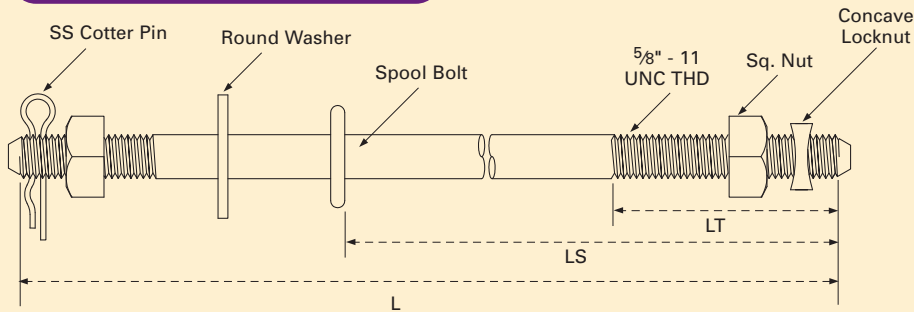


Single



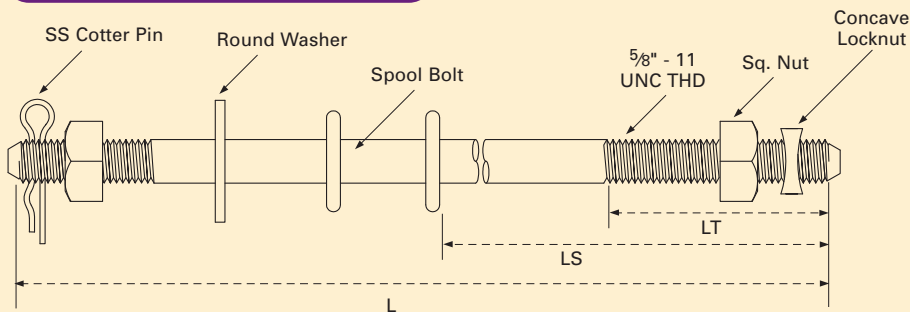
Double

### Single Upset Spool Bolt



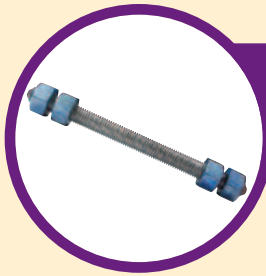
| PART NUMBER | SIZE (Diam x LS) | OVERALL LENGTH (L)               | THREAD LENGTH (LT) | CARTON QTY |
|-------------|------------------|----------------------------------|--------------------|------------|
| 1712        | 5/8" x 9"        | 13 <sup>1</sup> / <sub>2</sub> " | 4"                 | 20         |
| 1713        | 5/8" x 10"       | 14 <sup>1</sup> / <sub>2</sub> " | 4"                 | 20         |
| 1714        | 5/8" x 12"       | 16 <sup>1</sup> / <sub>2</sub> " | 6"                 | 20         |
| 1715        | 5/8" x 14"       | 18 <sup>1</sup> / <sub>2</sub> " | 6"                 | 10         |

### Double Upset Spool Bolt



| PART NUMBER | SIZE (Diam x LS) | OVERALL LENGTH (L) | THREAD LENGTH (LT) | CARTON QTY |
|-------------|------------------|--------------------|--------------------|------------|
| 1716        | 5/8" x 9"        | 15"                | 4"                 | 20         |
| 1717        | 5/8" x 10"       | 16"                | 4"                 | 20         |
| 1718        | 5/8" x 12"       | 18"                | 6"                 | 10         |





## A193-B7 Double Arming Bolt with A194-2H Heavy Hex Nuts

- Used in lieu of using standard Double Arming Bolt when a higher tensile strength and yield is required. B7 Studs are also ideal when encountering high temperatures.
- Minimum tensile strength:  
 $\frac{1}{2}$ " – 17,700 lbf     $\frac{5}{8}$ " – 28,250 lbf,  
 $\frac{3}{4}$ " – 41,700 lbf     $\frac{7}{8}$ " – 57,750 lbf  
 1" – 75,750 lbf     $1\frac{1}{4}$ " – 121,125 lbf
- Recommended torque value:  
 $\frac{1}{2}$ " – 107 lbf     $\frac{5}{8}$ " – 213 lbf,  
 $\frac{3}{4}$ " – 378 lbf     $\frac{7}{8}$ " – 610 lbf  
 1" – 914 lbf.     $1\frac{1}{4}$ " – 1827 lbf.

| PART NUMBER | SIZE                  | CARTON QTY |
|-------------|-----------------------|------------|
| 31208       | $\frac{1}{2}$ " x 8"  | 25         |
| 31210       | $\frac{1}{2}$ " x 10" | 25         |
| 31212       | $\frac{1}{2}$ " x 12" | 25         |
| 31218       | $\frac{1}{2}$ " x 18" | 25         |
| 31220       | $\frac{1}{2}$ " x 20" | 25         |
| 35806       | $\frac{5}{8}$ " x 6"  | 50         |
| 35808       | $\frac{5}{8}$ " x 8"  | 50         |
| 35810       | $\frac{5}{8}$ " x 10" | 40         |
| 35812       | $\frac{5}{8}$ " x 12" | 40         |
| 35814       | $\frac{5}{8}$ " x 14" | 35         |
| 35816       | $\frac{5}{8}$ " x 16" | 30         |
| 35818       | $\frac{5}{8}$ " x 18" | 30         |
| 35820       | $\frac{5}{8}$ " x 20" | 20         |
| 35822       | $\frac{5}{8}$ " x 22" | 20         |
| 35824       | $\frac{5}{8}$ " x 24" | 20         |
| 35826       | $\frac{5}{8}$ " x 26" | 20         |
| 35828       | $\frac{5}{8}$ " x 28" | 20         |
| 35830       | $\frac{5}{8}$ " x 30" | 15         |
| 35832       | $\frac{5}{8}$ " x 32" | 15         |
| 35834       | $\frac{5}{8}$ " x 34" | 15         |
| 35836       | $\frac{5}{8}$ " x 36" | 15         |
| 33406       | $\frac{3}{4}$ " x 6"  | 25         |
| 33408       | $\frac{3}{4}$ " x 8"  | 25         |
| 33410       | $\frac{3}{4}$ " x 10" | 30         |
| 33412       | $\frac{3}{4}$ " x 12" | 20         |
| 33414       | $\frac{3}{4}$ " x 14" | 20         |
| 33416       | $\frac{3}{4}$ " x 16" | 20         |
| 33416X2*    | $\frac{3}{4}$ " x 16" | 20         |
| 33418       | $\frac{3}{4}$ " x 18" | 20         |
| 33418X2*    | $\frac{3}{4}$ " x 18" | 20         |
| 33420       | $\frac{3}{4}$ " x 20" | 20         |
| 33422       | $\frac{3}{4}$ " x 22" | 10         |
| 33422X2*    | $\frac{3}{4}$ " x 22" | 10         |
| 33424       | $\frac{3}{4}$ " x 24" | 5          |
| 33426       | $\frac{3}{4}$ " x 26" | 5          |
| 33428       | $\frac{3}{4}$ " x 28" | 5          |
| 33430       | $\frac{3}{4}$ " x 30" | 5          |
| 33432       | $\frac{3}{4}$ " x 32" | 5          |
| 33434       | $\frac{3}{4}$ " x 34" | 5          |
| 33436       | $\frac{3}{4}$ " x 36" | 5          |
| 33440       | $\frac{3}{4}$ " x 40" | 5          |
| 33442       | $\frac{3}{4}$ " x 42" | 5          |
| 33444       | $\frac{3}{4}$ " x 44" | 5          |
| 33446       | $\frac{3}{4}$ " x 46" | 5          |
| 37808       | $\frac{7}{8}$ " x 8"  | 10         |
| 37810       | $\frac{7}{8}$ " x 10" | 10         |
| 37812       | $\frac{7}{8}$ " x 12" | 15         |
| 37814       | $\frac{7}{8}$ " x 14" | 15         |
| 37816       | $\frac{7}{8}$ " x 16" | 10         |
| 37816X2*    | $\frac{7}{8}$ " x 16" | 5          |

\* Comes with 2 Nuts.

**A193-B7 Double Arming Bolt with A194-2H Heavy Hex Nuts**  
(continued)

| PART NUMBER | SIZE         | CARTON QTY |
|-------------|--------------|------------|
| 37818       | 7/8" x 18"   | 10         |
| 37818X2*    | 7/8" x 18"   | 5          |
| 37820       | 7/8" x 20"   | 10         |
| 37822       | 7/8" x 22"   | 10         |
| 37824       | 7/8" x 24"   | 10         |
| 37826       | 7/8" x 26"   | 7          |
| 37828       | 7/8" x 28"   | 8          |
| 37830       | 7/8" x 30"   | 8          |
| 37832       | 7/8" x 32"   | 8          |
| 37834       | 7/8" x 34"   | 5          |
| 37836       | 7/8" x 36"   | 5          |
| 37838       | 7/8" x 38"   | 5          |
| 37842       | 7/8" x 42"   | 5          |
| 31008X2*    | 1" x 8"      | 20         |
| 31010       | 1" x 10"     | 12         |
| 31012       | 1" x 12"     | 12         |
| 31014       | 1" x 14"     | 12         |
| 31016       | 1" x 16"     | 10         |
| 31018       | 1" x 18"     | 7          |
| 31020       | 1" x 20"     | 7          |
| 31022       | 1" x 22"     | 7          |
| 31024       | 1" x 24"     | 7          |
| 31026       | 1" x 26"     | 6          |
| 31028X2*    | 1" x 28"     | 6          |
| 31030       | 1" x 30"     | 7          |
| 31032X2*    | 1" x 32"     | 5          |
| 31034       | 1" x 34"     | 5          |
| 31036       | 1" x 36"     | 5          |
| 31038       | 1" x 38"     | 5          |
| 31048       | 1" x 48"     | 5          |
| 31080       | 1" x 80"     | 1          |
| 311428      | 1 1/4" x 28" | 5          |
| 311436      | 1 1/4" x 36" | 5          |
| 311442      | 1 1/4" x 42" | 5          |

\* Comes with 2 Nuts.

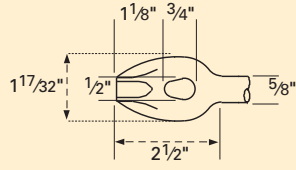
• Bolts

**POLELINE HARDWARE**

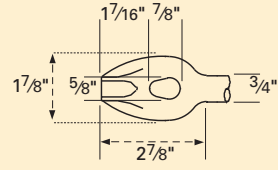


## Forged Guy Bolt

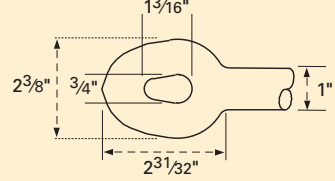
- Used for dead-ending and attaching guy wires to poles and crossarms.
- Manufacture's marking (ABI) appears on unthread section of each bolt, and is registered with the U.S. Patent Office per the Fastener Insignia Act.
- Allied Bolt marking (ABI) appears on each bolt.
- Supplied with a cone point to ease assembly with nut.
- Supplied with an attached square nut.
- Hot dip galvanized to meet ASTM Specifications A153.
- Recommended torque value:  
 $\frac{5}{8}$ " - 73 ft lb      $\frac{3}{4}$ " - 130 ft lb  
 1" - 314 ft lb
- Minimum Tensile Strength:  
 $\frac{5}{8}$ " - 13,550 lbf      $\frac{3}{4}$ " - 20,050 lbf  
 1" - 36,350 lbf



5/8" Guy Bolt



3/4" Guy Bolt



1" Guy Bolt

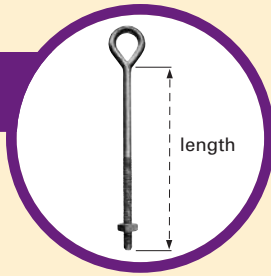
### Straight

| PART NUMBER | SIZE       | THREAD LENGTH | BELL NUMBER | CARTON QTY |
|-------------|------------|---------------|-------------|------------|
| 5804        | 5/8" x 8"  | 4"            |             | 25         |
| 5805        | 5/8" x 10" | 4"            | 400013272   | 20         |
| 5806        | 5/8" x 12" | 6"            | 400013280   | 10         |
| 5807        | 5/8" x 14" | 6"            | 400013298   | 10         |
| 5808        | 5/8" x 16" | 6"            | 400013306   | 10         |
| 5809        | 5/8" x 18" | 6"            | 400013314   | 20         |
| 5852        | 5/8" x 20" | 6"            |             | 10         |
| 5857        | 3/4" x 10" | 4"            |             | 10         |
| 5814        | 3/4" x 12" | 6"            | 400013330   | 10         |
| 5813        | 3/4" x 14" | 6"            | 400013348   | 10         |
| 5812        | 3/4" x 16" | 6"            |             | 10         |
| 5858        | 3/4" x 18" | 6"            |             | 10         |
| 5859        | 3/4" x 20" | 6"            |             | 5          |

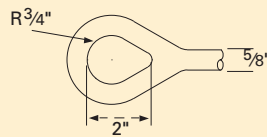
### Angled (Bent)

| PART NUMBER | SIZE       | THREAD LENGTH | BELL NUMBER | CARTON QTY |
|-------------|------------|---------------|-------------|------------|
| 5831        | 5/8" x 8"  | 4"            |             | 20         |
| 5832        | 5/8" x 10" | 4"            | 400012795   | 20         |
| 5834        | 5/8" x 12" | 6"            | 400012803   | 10         |
| 5836        | 5/8" x 14" | 6"            | 400012811   | 10         |
| 5838        | 5/8" x 16" | 6"            | 400012829   | 10         |
| 5839        | 5/8" x 18" | 6"            |             | 10         |
| 5860        | 5/8" x 20" | 6"            |             | 5          |
| 5824        | 3/4" x 10" | 4"            |             | 10         |
| 5825        | 3/4" x 12" | 6"            | 400012852   | 10         |
| 5826        | 3/4" x 14" | 6"            | 400012860   | 10         |
| 5815        | 3/4" x 16" | 6"            | 400012878   | 10         |
| 5816        | 3/4" x 18" | 6"            | 400012886   | 10         |
| 5817        | 3/4" x 20" | 6"            |             | 5          |
| 5818        | 3/4" x 22" | 6"            |             | 5          |
| 5840        | 1" x 12"   | 6"            | 400012902   | 5          |
| 5841        | 1" x 14"   | 6"            | 400012910   | 5          |
| 5842        | 1" x 16"   | 6"            | 400012928   | 5          |
| 5843        | 1" x 18"   | 6"            | 400012936   | 5          |

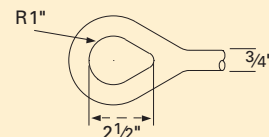
## Oval Eye Bolt



- Used for guying, dead-ending, and attaching clevises, suspension insulators and other poleline hardware.
- Oval Eye Bolts have a forged eye, instead of welded, for high-strength.
- Each Oval Eye Bolt is provided with a regular square nut.
- Manufacture's marking (ABI) appears on unthread section of each bolt, and is registered with the U.S. Patent Office per the Fastener Insignia Act.
- All components are hot dip galvanized to meet ASTM Specification A153.
- Recommended torque value:  
 $\frac{5}{8}$ " - 73 ft lb      $\frac{3}{4}$ " - 130 ft lb
- Minimum tensile strength:  
 $\frac{5}{8}$ " - 13,550 lbf      $\frac{3}{4}$ " - 20,050 lbf



**5/8" Oval Eye Bolt**

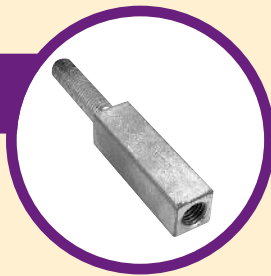


**3/4" Oval Eye Bolt**

| PART NUMBER | SIZE       | THREAD LENGTH | CARTON QTY |
|-------------|------------|---------------|------------|
| 4101        | 5/8" x 6"  | 4"            | 40         |
| 4102        | 5/8" x 8"  | 4"            | 50         |
| 4103*       | 5/8" x 10" | 6"            | 35         |
| 4104*       | 5/8" x 12" | 6"            | 35         |
| 4105        | 5/8" x 14" | 6"            | 20         |
| 4106        | 5/8" x 16" | 6"            | 35         |
| 4107        | 5/8" x 18" | 6"            | 25         |
| 4108        | 5/8" x 20" | 6"            | 25         |
| 4112        | 3/4" x 8"  | 4"            | 25         |
| 4113        | 3/4" x 10" | 6"            | 25         |
| 4114        | 3/4" x 12" | 6"            | 25         |
| 4115        | 3/4" x 14" | 6"            | 25         |
| 4116        | 3/4" x 16" | 6"            | 20         |
| 4117        | 3/4" x 18" | 6"            | 25         |
| 4119        | 3/4" x 20" | 6"            | 10         |

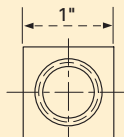
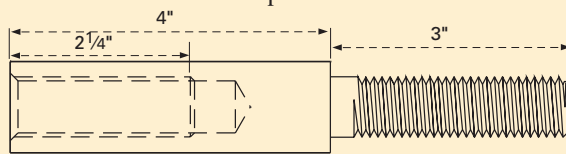
\* Please add "SS" to the part number for Stainless Steel (304).

## Cable Extension Bolt

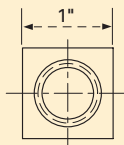
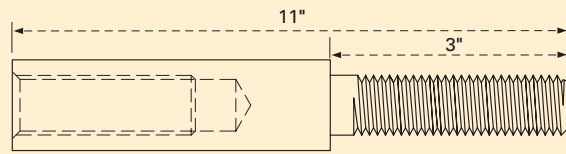


- Used in conjunction with a Reinforcing Brace to place a second cable at the same level and side of pole as the existing cable.
- Cable Extension Bolts are designed to attach to the threaded ends of suspension bolts.
- Internally threaded section is four inches long.
- External threaded section is three inches long.
- Hot dip galvanized to meet ASTM Specification A153.

**#2070 and #2071**



**#2073**



| PART NUMBER | DESCRIPTION                      | BELL NUMBER | CARTON QTY |
|-------------|----------------------------------|-------------|------------|
| 2070        | S Cable Extension Bolt (5/8"-11) | 400776423   | 50         |
| 2071        | C Cable Extension Bolt (3/4"-10) | 000117820   | 25         |
| 2073        | 5/8" x 11" Cable Extension Bolt  |             | 25         |



## Carriage Bolt

- Designed for use in square holes to keep the bolt from turning as the nut is tightened. Once bolt is inserted in square hole, bolt is tightened without gripping the bolt head.
- Bolt head marking (ABI) appears on head of each bolt, and is registered with the U.S. Patent Office per the Fastener.
- Manufactured from Grade 2 Steel.
- Hot dip galvanized to meet ASTM Specification A153.
- Minimum tensile strength:
 

|                              |                              |
|------------------------------|------------------------------|
| $\frac{3}{16}$ " - 1,050 lbf | $\frac{1}{4}$ " - 1,900 lbf  |
| $\frac{5}{16}$ " - 3,140 lbf | $\frac{3}{8}$ " - 4,650 lbf  |
| $\frac{1}{2}$ " - 8,500 lbf  | $\frac{5}{8}$ " - 13,550 lbf |
| $\frac{3}{4}$ " - 20,000 lbf |                              |
- Recommended torque value:
 

|                             |                            |
|-----------------------------|----------------------------|
| $\frac{3}{16}$ " - 20 in lb | $\frac{1}{4}$ " - 4 ft lb  |
| $\frac{5}{16}$ " - 8 ft lb  | $\frac{3}{8}$ " - 15 ft lb |
| $\frac{1}{2}$ " - 37 ft lb  | $\frac{5}{8}$ " - 73 ft lb |
| $\frac{3}{4}$ " - 130 ft lb |                            |

| PART NUMBER | SIZE                                 | THREAD LENGTH     | BELL NUMBER | INNER PACK QTY | CARTON QTY |
|-------------|--------------------------------------|-------------------|-------------|----------------|------------|
| 279         | $\frac{3}{16}$ " x 1"                | 1"                |             | 100            | 3,200      |
| 278         | $\frac{3}{16}$ " x 1 $\frac{1}{4}$ " | 1 $\frac{1}{4}$ " | 400471595   | 100            | 3,200      |
| 282         | $\frac{1}{4}$ " x 1 $\frac{1}{2}$ "  | 1 $\frac{1}{2}$ " |             | 100            | 800        |
| 268         | $\frac{1}{4}$ " x 2"                 | 2"                |             | 100            | 800        |
| 269         | $\frac{1}{4}$ " x 2 $\frac{1}{4}$ "  | 2 $\frac{1}{4}$ " |             | 100            | 800        |
| 277         | $\frac{1}{4}$ " x 2 $\frac{1}{2}$ "  | 1 $\frac{1}{2}$ " |             | 100            | 400        |
| 7004        | $\frac{5}{16}$ " x 3"                | 3"                |             | 100            | 400        |
| 918         | $\frac{3}{8}$ " x 1 $\frac{1}{4}$ "  | 1 $\frac{1}{4}$ " |             |                | 50         |
| 270         | $\frac{3}{8}$ " x 2 $\frac{1}{2}$ "  | 2 $\frac{1}{2}$ " | 400124498   |                | 100        |
| 923         | $\frac{3}{8}$ " x 3"                 | 3"                |             | 50             | 200        |
| 926         | $\frac{3}{8}$ " x 4"                 | 4"                | 400012514   |                | 100        |
| 927         | $\frac{3}{8}$ " x 4 $\frac{1}{2}$ "  | 4 $\frac{1}{2}$ " | 400012522   |                | 100        |
| 925         | $\frac{3}{8}$ " x 5"                 | 5"                | 400494191   | 50             | 250        |
| 941         | $\frac{3}{8}$ " x 5 $\frac{1}{2}$ "  | 5 $\frac{1}{2}$ " |             |                | 50         |
| 928         | $\frac{3}{8}$ " x 6"                 | 6"                | 400012530   |                | 100        |
| 935         | $\frac{3}{8}$ " x 7"                 | 7"                |             |                | 100        |
| 929         | $\frac{3}{8}$ " x 8"                 | 6"                | 400012448   |                | 100        |
| 930         | $\frac{3}{8}$ " x 10"                | 6"                | 400012555   |                | 100        |
| 931         | $\frac{3}{8}$ " x 12"                | 6"                | 400012556   |                | 100        |
| 934         | $\frac{3}{8}$ " x 14"                | 6"                | 400012571   |                | 100        |
| 10002       | $\frac{1}{2}$ " x 1 $\frac{1}{2}$ "  | 1 $\frac{1}{2}$ " |             |                | 500        |
| 10005       | $\frac{1}{2}$ " x 2 $\frac{1}{2}$ "  | 2 $\frac{1}{2}$ " |             |                | 50         |
| 1499        | $\frac{1}{2}$ " x 4"                 | 4"                |             |                | 50         |
| 1498        | $\frac{1}{2}$ " x 4 $\frac{1}{2}$ "  | 4 $\frac{1}{2}$ " |             |                | 100        |
| 890         | $\frac{1}{2}$ " x 4 $\frac{3}{4}$ "  | 4 $\frac{3}{4}$ " |             |                | 50         |
| 946         | $\frac{1}{2}$ " x 5"                 | 5"                |             |                | 50         |
| 1490        | $\frac{1}{2}$ " x 5 $\frac{1}{2}$ "  | 5 $\frac{1}{2}$ " |             |                | 50         |
| 7018        | $\frac{1}{2}$ " x 6"                 | 6"                | 400012597   |                | 50         |
| 1493        | $\frac{1}{2}$ " x 7"                 | 6"                |             |                | 50         |
| 1492        | $\frac{1}{2}$ " x 8"                 | 6"                |             |                | 50         |
| 14910       | $\frac{1}{2}$ " x 10"                | 4"                |             |                | 50         |
| 9360        | $\frac{5}{8}$ " x 2 $\frac{1}{2}$ "  | 2 $\frac{1}{2}$ " |             |                | 50         |
| 9364        | $\frac{5}{8}$ " x 4"                 | 4"                |             |                | 50         |
| 1494        | $\frac{5}{8}$ " x 5"                 | 5"                |             |                | 50         |
| 936         | $\frac{5}{8}$ " x 6"                 | 6"                | 400012605   |                | 50         |
| 9365        | $\frac{3}{4}$ " x 4"                 | 4"                |             |                | 50         |

\* Please add "SS" to the part number for Stainless Steel (304).

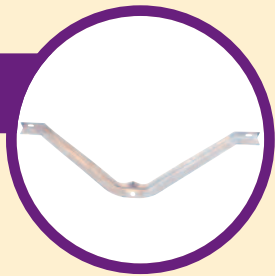
## #316 Stainless Steel Hex Bolt Kit



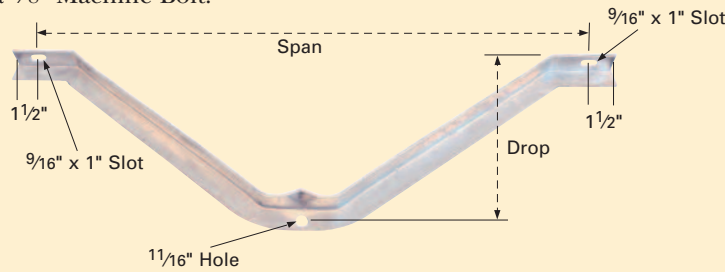
- Each Kit contains (1) #316 Stainless Steel Hex Bolt, (1) #316 Stainless Steel Hex Nut, (2) 2-1/4" Square Washers #304 Stainless Steel, (1) #316 Stainless Steel Round Washer and (1) #304 Stainless Steel Double Coil Lock Washer.
- Used in lieu of steel bolts for harsh environments.

| PART NUMBER | SIZE       | CARTON QTY |
|-------------|------------|------------|
| 22208       | 3/4" x 10" | 50         |
| 22209       | 3/4" x 12" | 50         |
| 22210       | 3/4" x 14" | 25         |
| 222106      | 3/4" x 16" | 25         |

## "V" Crossarm Brace



- One piece brace is used to support heavy crossarms on utility poles.
- Brace is attached to the underside of crossarms using lag screws and is fastened to the pole using a 5/8" Machine Bolt.
- Formed from AISI 1020 Steel.
- Hot dip galvanized to meet ASTM Specification A123.

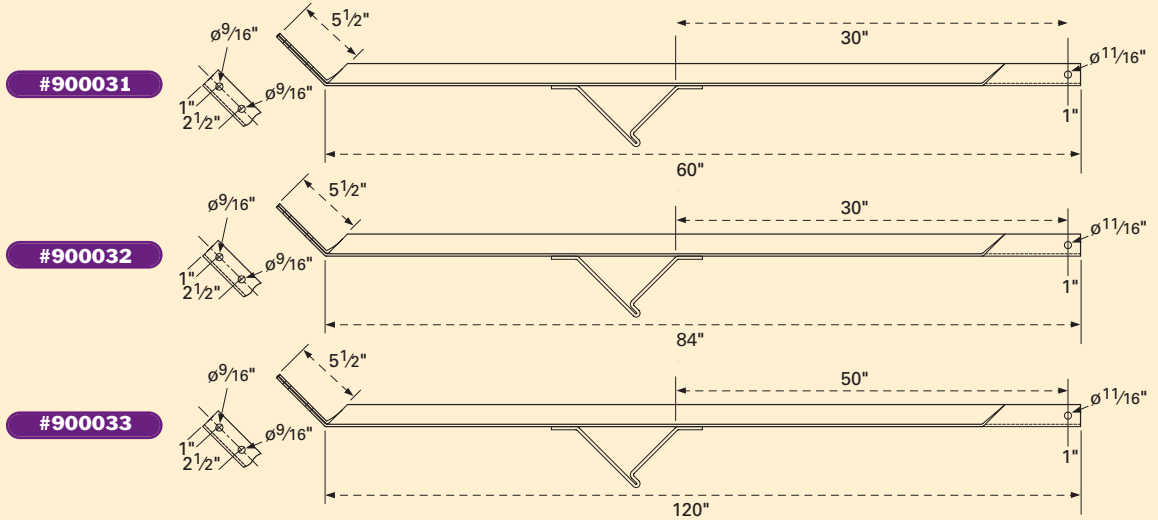


| PART NUMBER | SPAN | DROP | STOCK SIZE              | CARTON QTY |
|-------------|------|------|-------------------------|------------|
| 8400        | 37"  | 12"  | 1 1/2" x 1 1/2" x 3/16" | 1          |
| 8405        | 42"  | 12"  | 1 1/2" x 1 1/2" x 3/16" | 1          |
| 8410        | 48"  | 18"  | 1 1/2" x 1 1/2" x 3/16" | 1          |
| 8415        | 60"  | 18"  | 1 1/2" x 1 1/2" x 3/16" | 1          |
| 8420        | 60"  | 18"  | 1 3/4" x 1 3/4" x 3/16" | 1          |
| 8430        | 66"  | 20"  | 1 3/4" x 1 3/4" x 3/16" | 1          |
| 8435        | 72"  | 22"  | 1 3/4" x 1 3/4" x 3/16" | 1          |
| 8440        | 88"  | 28"  | 1 3/4" x 1 3/4" x 3/16" | 1          |



## Alley Arm Brace

- Used for off-center crossarm mounting when pole is located in close proximity to a building or other obstruction.
- Brace mounts at a 45° angle, providing rigid bracing for line support.
- Brace ends are flattened for pole or crossarm attachment. Alley Arm Braces can be used as a support on left or right side.
- Braces are equipped with a welded linesmen step (unless indicated otherwise).
- Braces are formed from  $\frac{3}{16}$ " or  $\frac{1}{4}$ " Angled Steel.
- Braces are hot dip galvanized to meet ASTM Specification A123.

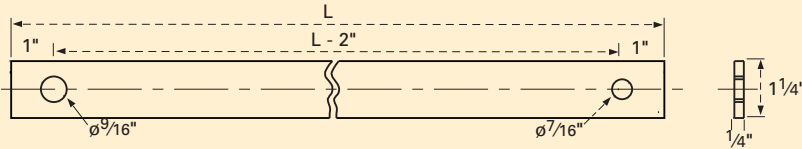
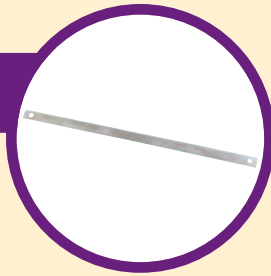


| PART NUMBER | ANGLE SIZE   | LENGTH | MOUNTING HOLE (Crossarm Side) | MOUNTING HOLE (Pole Side) | CARTON QTY |
|-------------|--|--------|-------------------------------|---------------------------|------------|
| 900031      | 1 $\frac{3}{4}$ " x 1 $\frac{3}{4}$ " x $\frac{3}{16}$ " | 5'     | $\frac{9}{16}$ "              | $\frac{9}{16}$ "          | 1          |
| 900032      | 1 $\frac{3}{4}$ " x 1 $\frac{3}{4}$ " x $\frac{3}{16}$ " | 7'     | $\frac{11}{16}$ "             | $\frac{9}{16}$ "          | 1          |
| 900033      | 2" x 2" x $\frac{1}{4}$ "                                | 10'    | $\frac{11}{16}$ "             | $\frac{9}{16}$ "          | 1          |
| 900035*     | 1 $\frac{3}{4}$ " x 1 $\frac{3}{4}$ " x $\frac{3}{16}$ " | 5'     | $\frac{11}{16}$ "             | $\frac{9}{16}$ "          | 1          |
| 900034*     | 1 $\frac{3}{4}$ " x 1 $\frac{3}{4}$ " x $\frac{3}{16}$ " | 7'     | $\frac{11}{16}$ "             | $\frac{9}{16}$ "          | 1          |

\*Without Welded Step.

## Crossarm Brace

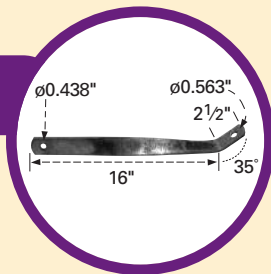
- Used in pairs as a means of aligning and supporting crossarms.
- Hole centers are 1" from brace ends.
- The diameters of the mounting holes are  $\frac{7}{16}$ " and  $\frac{9}{16}$ ".
- Stamped from AISI 1018 Steel.
- Hot dip galvanized to meet ASTM Specification A123.



| PART NUMBER | DESCRIPTION        | DISTANCE BETWEEN MOUNTING HOLES (L) | BELL NUMBER | CARTON QTY |
|-------------|--------------------|-------------------------------------|-------------|------------|
| 5092        | 26" Crossarm Brace | 24"                                 |             | 20         |
| 5091        | 28" Crossarm Brace | 26"                                 |             | 20         |
| 5070        | 30" Crossarm Brace | 28"                                 | 400017000   | 20         |
| 5093        | 32" Crossarm Brace | 30"                                 |             | 20         |

## Guard Arm Brace

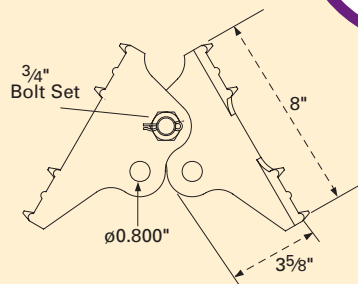
- Attaches to one side of the guard arm for additional support at points on the pole where cable or drop wire is suspended.
- A  $\frac{7}{16}$ " screw hole is provided for the guard arm, and a  $\frac{9}{16}$ " screw hole is provided for the pole end.
- Stamped from high strength AISI 1040 Steel.
- Hot dip galvanized to meet ASTM Specification A153.



| PART NUMBER | DESCRIPTION     | STOCK SIZE                         | CARTON QTY |
|-------------|-----------------|------------------------------------|------------|
| 5057        | Guard Arm Brace | $\frac{1}{4}$ " x $1\frac{1}{4}$ " | 25         |

## B Pole Brace

- Used in aerial construction as a connector between two utility poles where one pole is intended as a brace (support) for the other pole.
- Consists of two galvanized ductile iron plates assembled with a  $\frac{3}{4}$ " x  $5\frac{1}{2}$ " machine bolt/nut, and a cotter pin.
- When bracing to parallel poles a second  $\frac{3}{4}$ " bolt set should be installed into Pole Brace.
- All components are hot dip galvanized to meet ASTM Specification A153.



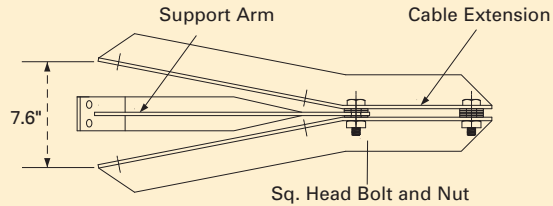
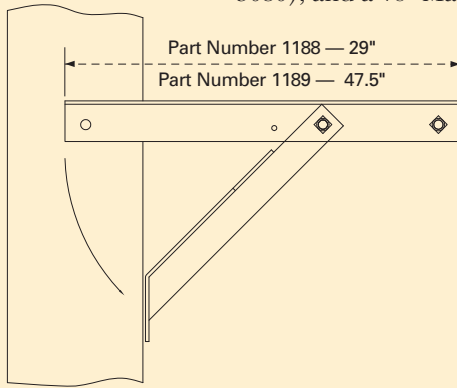
| PART NUMBER | DESCRIPTION  | BELL NUMBER | CARTON QTY |
|-------------|--------------|-------------|------------|
| 2090        | B Pole Brace | 400128633   | 2          |





### Cable Extension Bracket

- A steel fixture used where a horizontal offset from utility pole is required.
- #1188 and #1189 provide an offset to hang a 5/8" Machine Bolt.
- Brackets are used in conjunction with a straight suspension clamp (Part Number 5080), and a 5/8" Machine Bolt.
- Bracket is mounted with 5/8" or 3/4" machine bolts at the upper position and two 1/2" drive screws at the lower position.
- All components are hot dip galvanized to meet ASTM Specification A123.

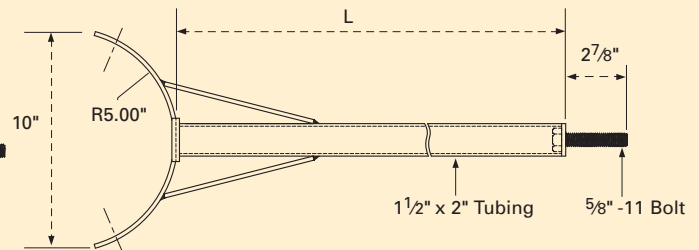
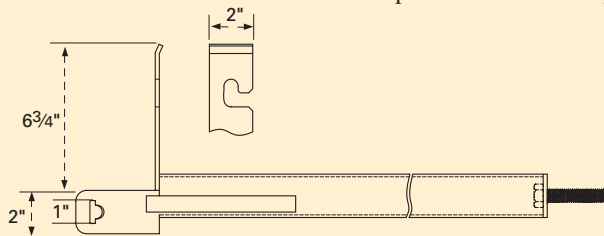


| PART NUMBER | ANGLE SIZE              | EXTENSION FROM CENTER OF POLE | BELL NUMBER | CARTON QTY |
|-------------|-------------------------|-------------------------------|-------------|------------|
| 1188        | 3" x 2 1/2" x 1/4"      | 17 1/2" to 26"                | 400004156   | 1          |
| 1189        | 3 1/2" x 2 1/2" x 5/16" | 26 1/2" to 44 1/2"            | 400004149   | 1          |



### Extension Bracket

- Provides an offset from round poles in poleline construction.
- Extension Bracket accepts 1" wide Giant Band for assembly on Cement, Steel or Fiberglass poles.
- Accepts a 5/8" bolt on top arm.
- 5/8"-11 protruding stud accepts B Cable Suspension Clamps (#5080).
- All components are black powder-coated for long life.
- Eight inches of vertical pole clearance required for installation.



| PART NUMBER | DESCRIPTION           | CARTON QTY |
|-------------|-----------------------|------------|
| 7585        | 18" Extension Bracket | 2          |
| 7586        | 24" Extension Bracket | 2          |

## Fiberglass Communication Standoff Bracket



- Standoff Brackets are used in aerial construction to provide a set distance from the Utility Poles for mounting Suspension Clamps.
- Standoff Brackets are provided with a fixed 5/8"-11 x 2 5/8" Stud that includes a mating Hex Nut, Lock Washer and Square Washer.
- Both End Fitting and Pole Fitting are Casted from High-Strength Aluminum.
- Thru-Bolts and are spaced six inches apart.
- Minimum Ultimate Vertical Load: 2,100LBS (recommended maximum working load is 50% of minimum ultimate rating).
- Minimum Ultimate Longitudinal Load: 1,300LBS (recommended maximum working load is 50% of minimum ultimate rating).

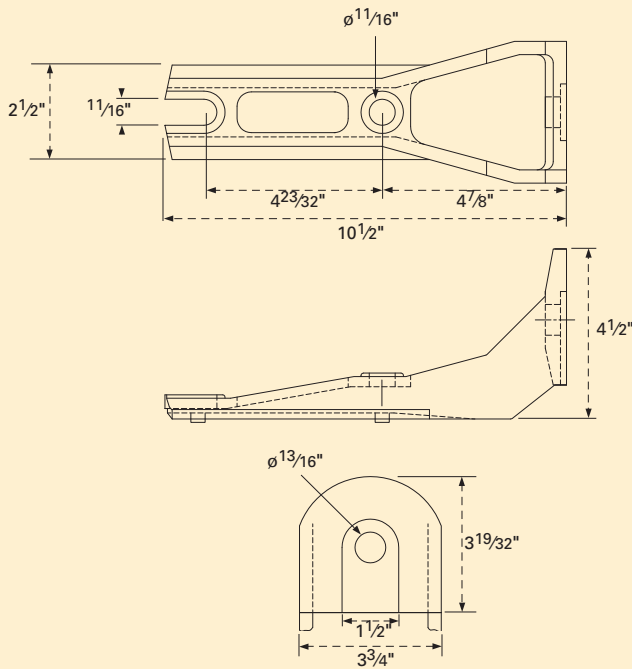
| PART NUMBER | SIZE (Distance from Pole) | CARTON QTY |
|-------------|---------------------------|------------|
| 4869        | 12"                       | 2          |
| 4870        | 15"                       | 2          |
| 4871        | 18"                       | 2          |
| 4872        | 21"                       | 2          |
| 4874        | 24"                       | 2          |
| 4875        | 30"                       | 2          |
| 4876        | 36"                       | 2          |

## Pole Top Bracket

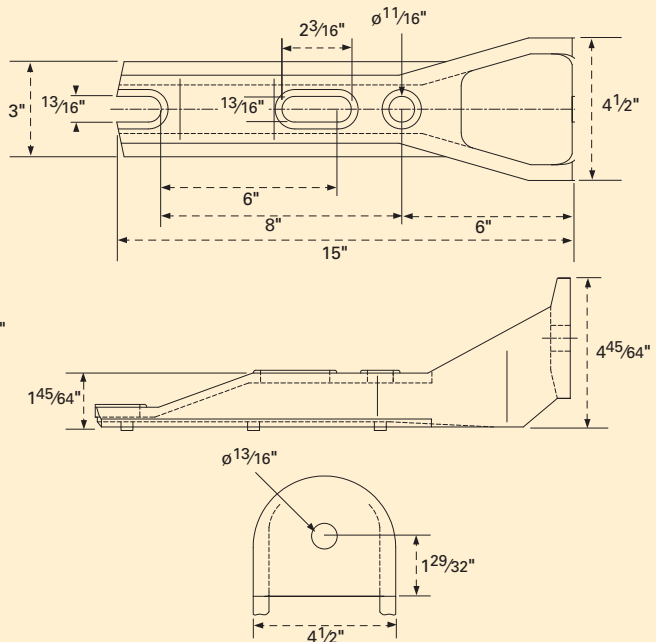


- Pole Top Brackets are used to support post insulators on the top of utility poles.
- Brackets mount to pole with Square Head Machine Bolts.
- Hot dip galvanized to meet ASTM Specification A153.

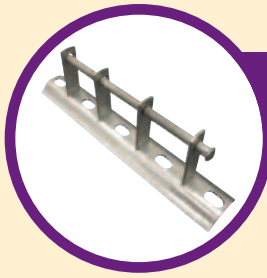
#5160



#5161

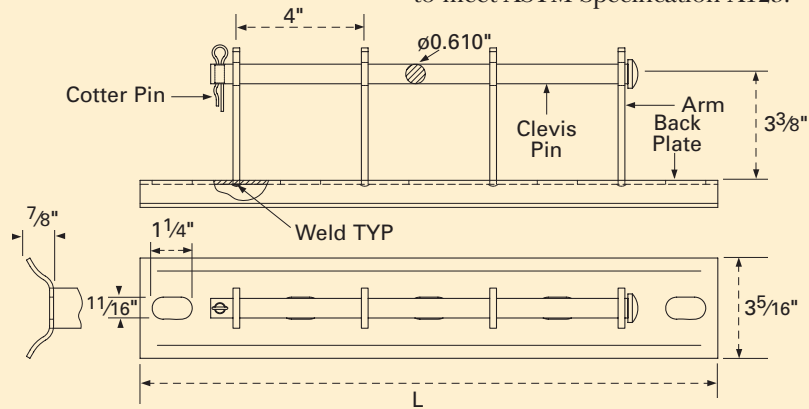


| PART NUMBER | DESCRIPTION            | RATING | CARTON QTY |
|-------------|------------------------|--------|------------|
| 5160        | Pole Top Bracket       | 35 kV  | 10         |
| 5161        | Large Pole Top Bracket | 69 kV  | 5          |

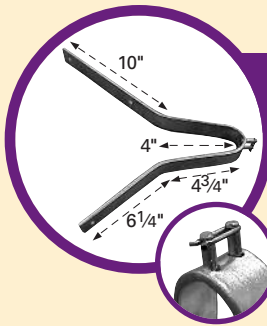


## Secondary Rack

- Allied Bolt Secondary Racks feature a back plate with a curved radius and 3 1/4" wide bearing surface for mounting on utility poles.
- Mounting slots accommodate 5/8" Thru Bolts.
- Extended arms are welded to Back Plate for strength.
- Round Head Clevis Pin has no sharp edges to damage insulation when stringing secondaries. The end of the Pin is drilled and is supplied with an attached Stainless Steel Cotter Pin for captivating Insulators.
- The Secondary Racks provide 8" spacing between Insulators.
- All components are Hot Dip Galvanized to meet ASTM Specification A123.



| PART NUMBER | SIZE (L) | # OF WIRES | # OF ARMS WELDED TO BACK PLATE | CARTON QTY |
|-------------|----------|------------|--------------------------------|------------|
| 7620        | 18"      | 2          | 4                              | 1          |
| 7623        | 26"      | 3          | 6                              | 1          |
| 7624        | 34"      | 4          | 8                              | 1          |



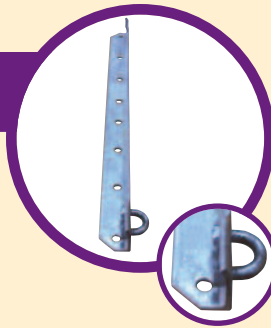
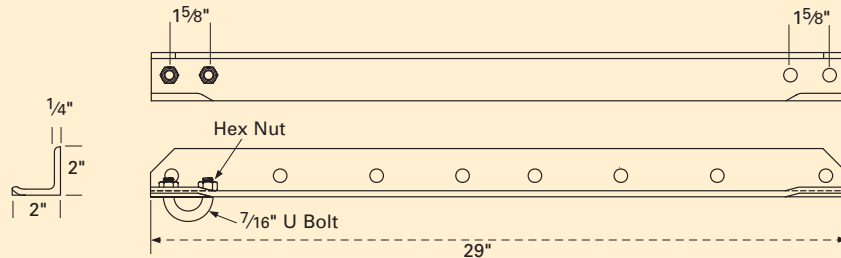
## B Wall Bracket Assembly

- Used for placing strand at outside corners on masonry buildings.
- Supplied with two riveted studs and a mating retaining-clip at the end of the bracket to retain the sheathed strand of self-supporting cables.
- The two arms of the bracket are 6 1/4" and 10".
- Bracket provides a 4" offset from wall.
- Mounting holes are 7/16" in diameter.
- Hot dip galvanized to meet ASTM Specification A153.

| PART NUMBER | DESCRIPTION    | SIZE STOCK     | BELL NUMBER | CARTON QTY |
|-------------|----------------|----------------|-------------|------------|
| 851         | B Wall Bracket | .250" x 1 1/2" | 400018461   | 5          |

## C Wall Bracket Assembly

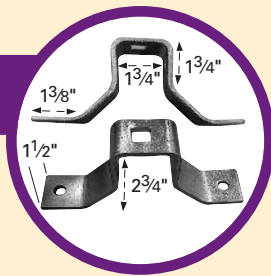
- Used in lieu of the B Corner Wall Strap for placing strand at outside corners on masonry buildings where the change in direction of the strand, either horizontally or vertically, is greater than 10°.
- Mounting holes accommodate  $\frac{1}{2}$ " bolts.
- Each Assembly is equipped with (1) U Bolt and (2) Hex Nuts.
- Hot dip galvanized to Meet ASTM Specification A123.



| PART NUMBER | DESCRIPTION             | CARTON QTY |
|-------------|-------------------------|------------|
| 1440        | C Wall Bracket Assembly | 5          |

## D Wall Bracket

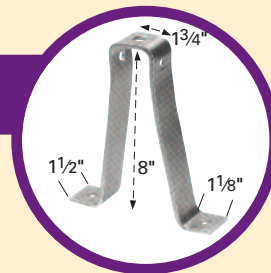
- Used in conjunction with a one-bolt guy clamp for supporting strand on exterior walls where not more than three inches of clearance is required between cable and wall.
- Mounting holes are  $\frac{7}{16}$ " in diameter.
- Bracket is seven inches in overall length.
- Center mounting hole for guy clamps accommodates  $\frac{1}{2}$ " carriage bolt.
- Stamped from AISI 1018 steel.
- Hot dip galvanized to meet ASTM Specification A153.



| PART NUMBER | DESCRIPTION    | SIZE STOCK     | BELL NUMBER | CARTON QTY |
|-------------|----------------|----------------|-------------|------------|
| 842         | D Wall Bracket | .187" x 1 1/2" | 400018487   | 10         |

## E Wall Bracket

- Used in conjunction with a one-bolt guy clamp for supporting strand on exterior walls. Bracket provides a clearance of 8".
- Mounting holes are  $\frac{7}{16}$ ".
- Center square hole for mounting guy clamp accommodates a  $\frac{1}{2}$ " carriage bolt.
- Stamped from AISI 1018 steel.
- Hot dip galvanized to meet ASTM Specification A153.

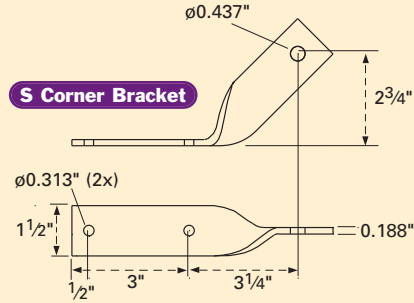
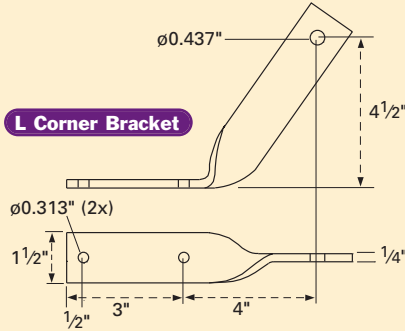


| PART NUMBER | DESCRIPTION    | SIZE STOCK     | BELL NUMBER | CARTON QTY |
|-------------|----------------|----------------|-------------|------------|
| 863         | E Wall Bracket | .187" x 1 1/2" | 400018495   | 30         |

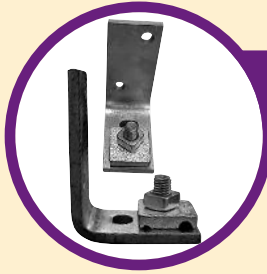


## L & S Corner Bracket

- Used with a porcelain knob to accept bails of drop wire clamps and run telephone service wire around corners of buildings.
- The L Corner Bracket is used at corners where a leader or spout must be cleared by the drop.
- Mounting holes are  $\frac{5}{16}$ " in diameter.
- The S Corner Bracket is used when a corner is free from obstacles.
- Stamped from AISI 1018 Steel.
- Hot dip galvanized to ASTM Specification A153.

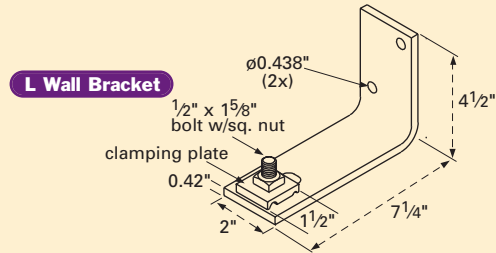
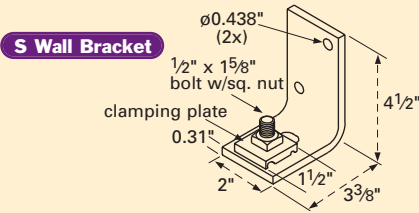


| PART NUMBER | DESCRIPTION      | SIZE STOCK    | BELL NUMBER | CARTON QTY |
|-------------|------------------|---------------|-------------|------------|
| 883         | L Corner Bracket | .250 x 1 1/2" | 400017836   | 50         |
| 884         | S Corner Bracket | .188 x 1 1/2" | 400017844   | 50         |



## L & S Wall Bracket

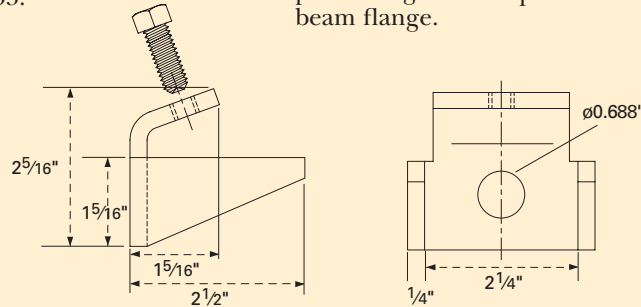
- Used to support strand on interior walls of either frame or masonry construction.
- The L Wall Bracket provides a 5" standoff from wall.
- The S Wall Bracket provides a 2" standoff from wall.
- Each bracket is provided with a 1/2" x 1 5/8" track bolt, 1/2" square nut, and a dual grooved clamping plate.
- Clamping plate has a 1 3/64" and a 3/8" groove.
- Each bracket has two 7/16" mounting holes.
- All components are hot dip galvanized to meet ASTM Specification A153.



| PART NUMBER | DESCRIPTION    | BELL NUMBER | CARTON QTY |
|-------------|----------------|-------------|------------|
| 881         | S Wall Bracket | 400018511   | 25         |
| 882         | L Wall Bracket | 400018503   | 25         |

## B Beam Clamp

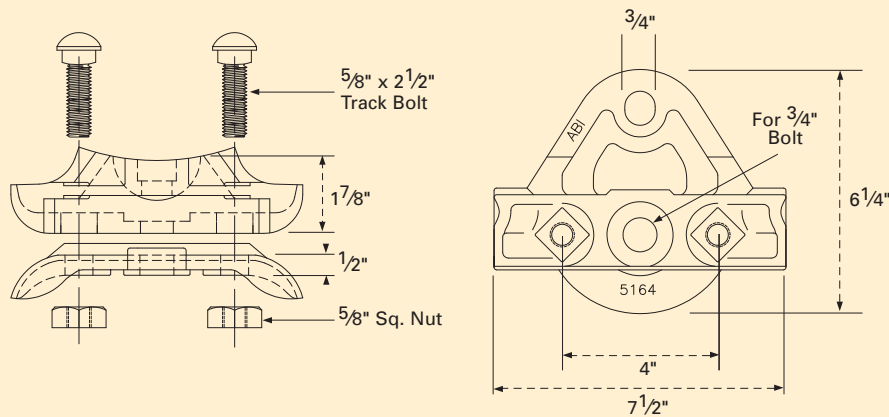
- B Beam Clamp is used for dead-ending strand runs to "I" beams.
- Hot dip galvanized to meet ASTM Specification A153.
- The clamp is provided with an attachment hole for  $\frac{5}{8}$ " bolts and a square set screw for initially positioning the clamp on the beam flange.



| PART NUMBER | DESCRIPTION  | CARTON QTY |
|-------------|--------------|------------|
| 444         | B Beam Clamp | 25         |

## Aerial Cable Heavy Duty Messenger Clamp

- Used for attaching the messenger of aerial cable to utility poles.
- Can be used in an angled and tangent construction.
- Clamp is capable of articulating.
- Clamp is comprised of two ductile iron castings, two  $\frac{5}{8}$ " diameter Track Bolts with mating Regular Nuts.
- All components are hot dip galvanized to meet ASTM Specification A153.



| PART NUMBER | DESCRIPTION                             | MESS. RANGE                        | CARTON QTY |
|-------------|---|------------------------------------|------------|
| 5164        | Aerial Cable Heavy Duty Messenger Clamp | $\frac{7}{16}$ " - $\frac{5}{8}$ " | 5          |

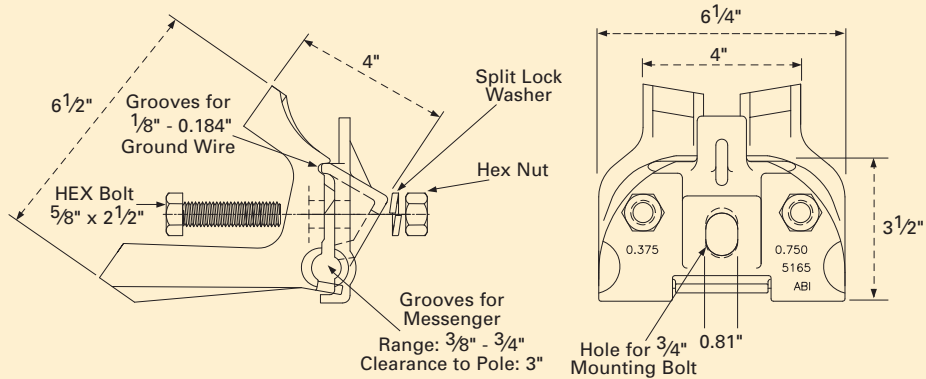
• Brackets (Wall & Frame)  
• Clamps (Messenger)

**POLELINE HARDWARE**



### Aerial Messenger Cable Clamp

- Used to attach the messenger of aerial cable to utility poles.
- Pole mounted casting can be mounted independent of the mating casting to capture the messenger cable.
- Can be used in an angled and tangent construction.
- Mounted to pole with a 3/4" Square Head Machine Bolt
- Clamp is comprised of two ductile iron castings, two 5/8" diameter Hex Bolts with mating Hex Nuts and Split Lock Washers.
- All components are hot dip galvanized to meet ASTM Specification A153.

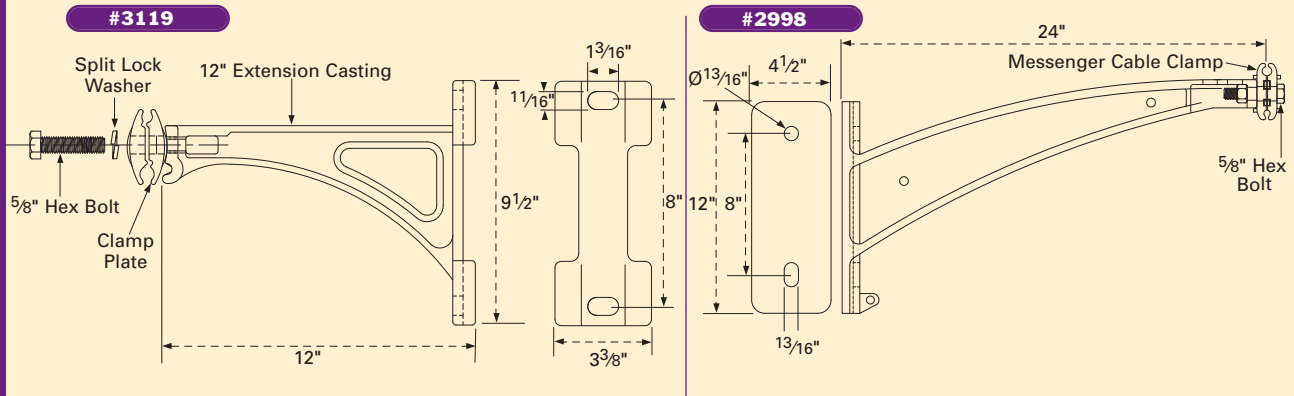


| PART NUMBER | DESCRIPTION                  | GROUND WIRE DIA. RANGE | MESS. RANGE | CARTON QTY |
|-------------|------------------------------|------------------------|-------------|------------|
| 5165        | Aerial Messenger Cable Clamp | 0.125" - 0.184"        | 3/8"- 3/4"  | 4          |



### Messenger Cable Extension

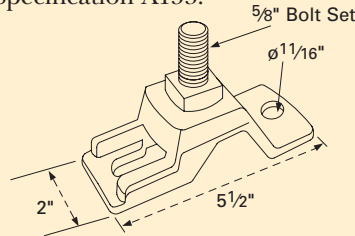
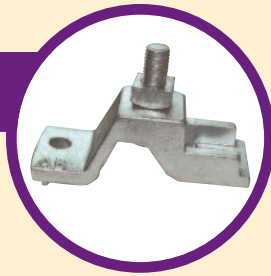
- Used to support messengered cable away from utility pole.
- Mounted to pole with 5/8" diameter Machine Bolts.
- Clamping plates reverse to accept a wide range of messenger wire sizes.
- Extension is comprised of two casted clamping plates, a casted pole extension, a Hex Cap Screw and Split Lock Washer.
- All components are hot dip galvanized to meet ASTM Specification A 153.



| PART NUMBER | DESCRIPTION                   | CARTON QTY |
|-------------|-------------------------------|------------|
| 3119        | 12" Messenger Cable Extension | 5          |
| 2998        | 24" Messenger Cable Extension | 5          |

## B Support Clamp

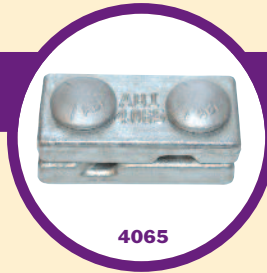
- Used to add a second parallel strand to a pole.
- The support clamp slips under the head of the cable suspension bolt supporting the original strand and accepts any suspension clamp designed for a 5/8" mounting bolt on the back side of the pole.
- Each support clamp consists of a Ductile Iron casting with a 5/8" square head bolt and nut.
- Provides 1 1/2" offset from pole.
- All components are hot dip galvanized to meet ASTM Specification A153.



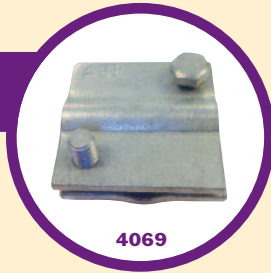
| PART NUMBER | DESCRIPTION     | BELL NUMBER | CARTON QTY |
|-------------|-----------------|-------------|------------|
| 2510        | B Support Clamp | 400273074   | 5          |

## Crossover Clamp

- Used in aerial construction at the mid-span to clamp two strands together perpendicularly.
- 4065 is casted from Ductile Iron for strength.
- 4069 is stamped from AISI 1018 Steel.
- Hot dip galvanized to meet ASTM Specification A153.



4065

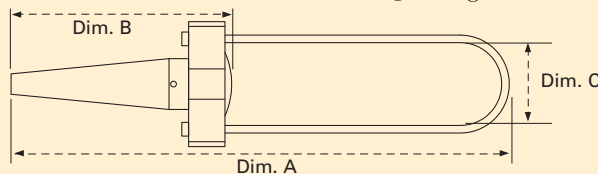
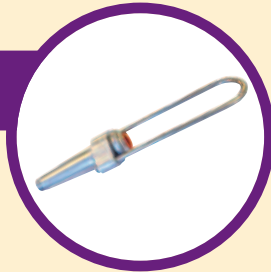


4069

| PART NUMBER | DESCRIPTION                 | CARTON QTY |
|-------------|-----------------------------|------------|
| 4065        | 1/4" - 3/8" Crossover Clamp | 25         |
| 4069        | 1/4" Crossover Clamp        | 50         |

## Strand Dead-end

- Used to dead-end strand in guying or overhead applications.
- Holds up to 90% of the rated breaking strength of wire used.



| PART NUMBER | PRIMARY STRAND | BAIL DIAMETER | TENSILE STRENGTH | DIM. A  | DIM. B | DIM. C | COLOR  | CARTON QTY |
|-------------|----------------|---------------|------------------|---------|--------|--------|--------|------------|
| AB520000    | 1/4" EHS       | .23"          | 6,600 lbs.       | 9.92"   | 4.80"  | 1.50"  | Yellow | 25         |
| AB520000L   | 1/4" EHS       | .23"          | 6,600 lbs.       | 13.625" | 4.80"  | 1.50"  | Yellow | 25         |
| AB520100    | 5/16" EHS      | .28"          | 10,780 lbs.      | 10.30"  | 5.31"  | 1.77"  | Black  | 25         |
| AB520100L   | 5/16" EHS      | .28"          | 10,780 lbs.      | 15.67"  | 5.31"  | 1.77"  | Black  | 25         |
| AB520200    | 3/8" EHS       | .32"          | 15,180 lbs.      | 13.30"  | 6.50"  | 1.93"  | Orange | 25         |
| AB520200L   | 3/8" EHS       | .32"          | 15,180 lbs.      | 17.36"  | 6.50"  | 1.93"  | Orange | 25         |
| AB520300    | 7/16" EHS      | .39"          | 18,720 lbs.      | 14.75"  | 6.85"  | 2.12"  | Green  | 25         |
| AB520300L   | 7/16" EHS      | .39"          | 18,720 lbs.      | 18.47"  | 6.85"  | 2.12"  | Green  | 25         |
| AB510000    | 1/4"           | .20"          | 6,000 lbs.       | 9.21"   | 3.97"  | 1.02"  | Yellow | 50         |
| AB510000L   | 1/4"           | .20"          | 6,000 lbs.       | 12.75"  | 3.97"  | 1.02"  | Yellow | 50         |
| AB510100    | 5/16"          | .27"          | 10,080 lbs.      | 9.25"   | 4.44"  | 1.46"  | Black  | 50         |
| AB510100L   | 5/16"          | .27"          | 10,080 lbs.      | 13.42"  | 4.44"  | 1.46"  | Black  | 50         |
| AB510200    | 3/8"           | .32"          | 13,860 lbs.      | 15.51"  | 5.19"  | 1.65"  | Orange | 50         |
| AB510200L   | 3/8"           | .32"          | 13,860 lbs.      | 17.17"  | 5.19"  | 1.65"  | Orange | 50         |

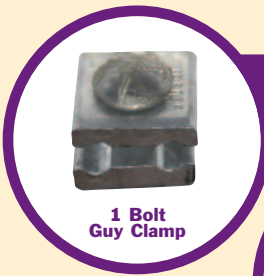




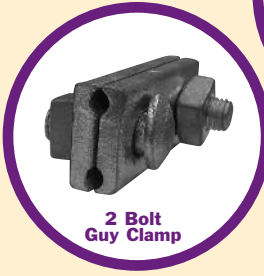
## Wire Rope Thimble

- Used in guying applications to form an oval wire eye for securing to eye-bolts and guy rods.
- Hot dip galvanized to meet ASTM Specification A153,
- Manufactured from AISI 1018 Steel.

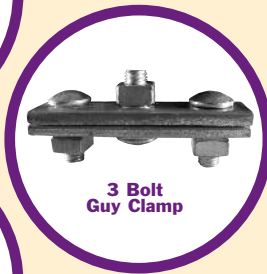
| PART NUMBER | SIZE OF ROPE (Diameter) | EYE WIDTH | EYE LENGTH | CARTON QTY |
|-------------|-------------------------|-----------|------------|------------|
| 1060        | 1/4"                    | 13/16"    | 1 11/16"   | 100        |
| 1061        | 5/16"                   | 1"        | 2"         | 100        |
| 1062        | 3/8"                    | 1 1/16"   | 2 1/8"     | 100        |
| 1063        | 1/2"                    | 1 7/16"   | 2 3/4"     | 50         |
| 1064        | 5/8"                    | 1 5/8"    | 3 1/4"     | 50         |
| 1065        | 3/4"                    | 1 7/8"    | 3 3/4"     | 50         |



1 Bolt  
Guy Clamp



2 Bolt  
Guy Clamp



3 Bolt  
Guy Clamp

## Guy Clamp

- Used to form guy loops that attach to anchor rods.
- Parallel grooves accept strand without marring.
- Plate halves align evenly for ease of installation.
- Each clamp is comprised of (2) plates and (1, 2, or 3) carriage bolts with regular square nuts.
- Hot dip galvanized to meet ASTM Specification A153.

| PART NUMBER | NUMBER OF BOLTS | BOLT DIAMETER | PLATE LENGTH | PLATE WIDTH | STRAND SIZES ACCOMMODATED | BELL NUMBER | CARTON QTY |
|-------------|-----------------|---------------|--------------|-------------|---------------------------|-------------|------------|
| 5055        | 1               | 1/2"          | 1 7/16"      | 1 9/16"     | 3/16" - 3/8"              | 400121315   | 50         |
| 5058        | 2               | 1/2"          | 3 3/8"       | 1 9/16"     | 3/16" - 3/8"              |             | 50         |
| 5059        | 3               | 1/2"          | 5 7/8"       | 1 9/16"     | 3/16" - 7/16"             |             | 25         |
| 5056        | 3               | 5/8"          | 5 7/8"       | 1 21/32"    | 5/16" - 1/2"              | 400762266   | 25         |



## Malleable Guy Clip

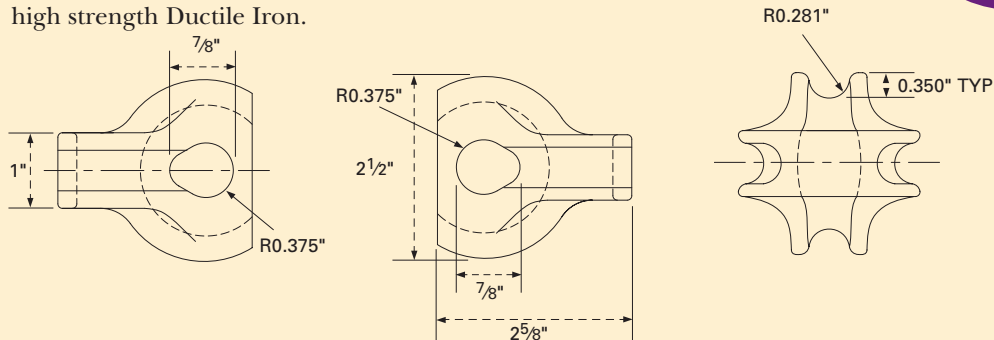
- A heavy duty means of securing down guys and wire rope.
- Comprised of a Malleable Iron base, "U" bolt, and two hex nuts.
- All components are hot dip galvanized to meet ASTM Specification A153.

| PART NUMBER | STRAND SIZE | CARTON QTY |
|-------------|-------------|------------|
| 885         | 1/4"        | 100        |
| 886         | 5/16"       | 100        |
| 887         | 3/8"        | 50         |
| 888         | 1/2"        | 50         |

## B Strand Connector



- Used as a thimble for interlocking two strand loops ranging in size from 3/16" (6M) to 1/2" (25M).
- Hot dip galvanized to meet ASTM Specification A153.
- B Strand Connectors are cast from high strength Ductile Iron.

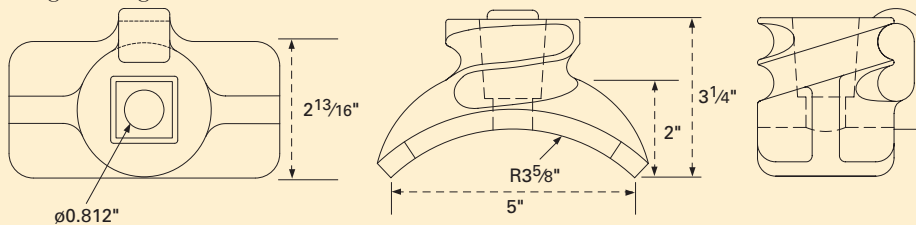


| PART NUMBER | DESCRIPTION        | BELL NUMBER | CARTON QTY |
|-------------|--------------------|-------------|------------|
| 2181        | B Strand Connector | 400129037   | 10         |

## B Strand Pole Connector



- Used for splicing two strands ranging in size from 3/16" (6M) to 1/2" (25M) on poles and for spacing cables away from pole at corners.
- Mounted to pole with 3/4" diameter machine bolts.
- Hot dip galvanized to meet ASTM Specification A153.
- B Strand Pole Connectors are cast from high strength Ductile Iron.

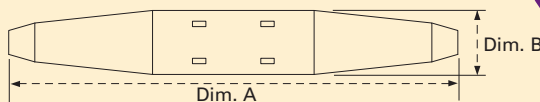


| PART NUMBER | DESCRIPTION             | BELL NUMBER | CARTON QTY |
|-------------|-------------------------|-------------|------------|
| 2175        | B Strand Pole Connector | 400129128   | 10         |

## Strand Splice



- Used to splice strands in guying and overhead applications.
- Holds up to 90% of the rated breaking strength of the strand.



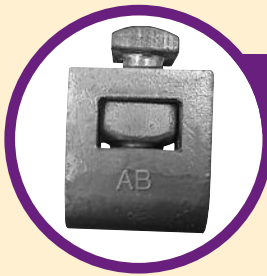
| PART NUMBER | PRIMARY STRAND | TENSILE STRENGTH | WIRE RANGE    | DIM. A | DIM. B | CARTON QTY |
|-------------|----------------|------------------|---------------|--------|--------|------------|
| AB504000    | 1/4" EHS       | 6,600 lbs.       | .215" - .270" | 8.22"  | 1.10"  | 50         |
| AB504100    | 5/16" EHS      | 10,780 lbs.      | .270" - .315" | 8.58"  | 1.22"  | 50         |
| AB504200    | 3/8" EHS       | 15,180 lbs.      | .325" - .392" | 10.10" | 1.48"  | 25         |
| AB504300    | 7/16" EHS      | 18,720 lbs.      | .413" - .449" | 11.00" | 1.59"  | 25         |
| AB500000    | 1/4"           | 6,000 lbs.       | .240" - .272" | 6.50"  | 0.91"  | 50         |
| AB500100    | 5/16"          | 10,080 lbs.      | .317" - .343" | 7.67"  | 1.10"  | 50         |
| AB500200    | 3/8"           | 13,860 lbs.      | .360" - .378" | 8.27"  | 1.29"  | 50         |



### B Strand Serving Sleeve

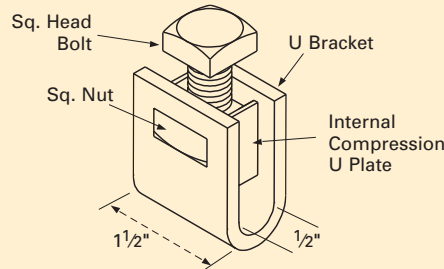
- Used for confining and securing the tails of guy wires and suspension strands.
- The strand size is indicated on the outside of each sleeve.
- Stamped from AISI 1018 Steel.
- Hot dip galvanized to meet ASTM Specification A153.

| PART NUMBER | STRAND SIZE | OVERALL LENGTH | BELL NUMBER | INNER PACK QTY | CARTON QTY |
|-------------|-------------|----------------|-------------|----------------|------------|
| 847         | 1/4"        | 1 3/8"         | 401093034   | 100            | 400        |
| 848         | 5/16"       | 1 1/2"         | 400488334   | 50             | 200        |
| 849         | 3/8"        | 1 3/4"         | 400488342   | 50             | 200        |
| 850         | 7/16"       | 2"             | 400488326   |                | 50         |

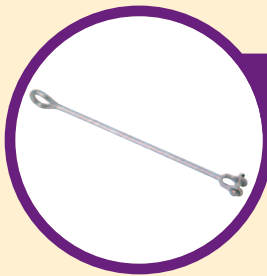


### B Strand Ground Clamp

- Used to secure cable sheath, bonding ribbon, or ground wire to strand.
- The clamp has an internal self-seating compression plate to evenly distribute clamping pressure.
- Clamp includes a 1/2" x 1 1/2" square head machine bolt and 1/2-13 regular square nut.
- Outside "U" channel is formed from .187" x 1 1/2" gauge steel.
- Internal self-seating compression plate is formed from .125" x 1/2" gauge steel.
- Hot dip galvanized to meet ASTM Specification A153.
- Accommodates strand from 3/16" to 1/2".

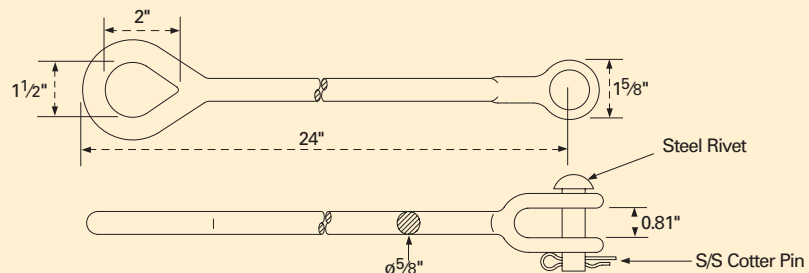


| PART NUMBER | DESCRIPTION           | BELL NUMBER | INNER PACK QTY | CARTON QTY |
|-------------|-----------------------|-------------|----------------|------------|
| 846         | B Strand Ground Clamp | 400121307   | 25             | 100        |



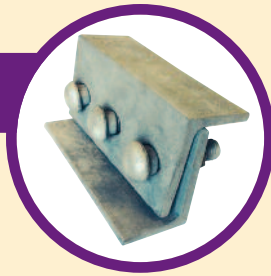
### Dead-end Clevis/Extension Link

- Used for dead-ending and at corner structures to provide clearance for mounting equipment or climbing space.
- Extension link provides a 24" offset and is 5/8" in diameter.
- The Extension Link has an oval eye on one end and a clevis with a pin/cotter pin assembly on the other end.
- All components are hot dip galvanized to meet ASTM Specification A123.

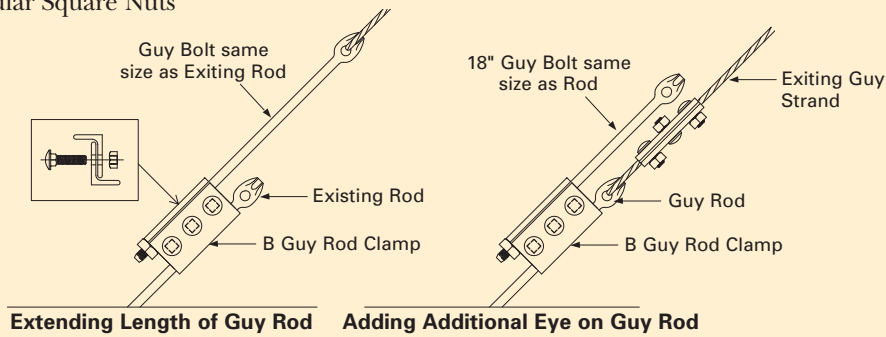


| PART NUMBER | DESCRIPTION        | CARTON QTY |
|-------------|--------------------|------------|
| 5090        | 24" Extension Link | 10         |

## B Guy Rod Clamp



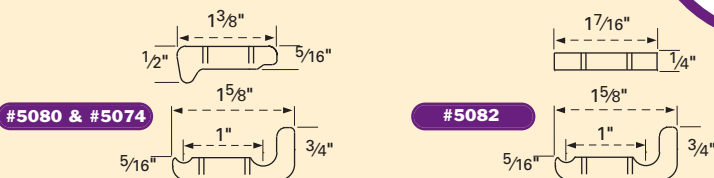
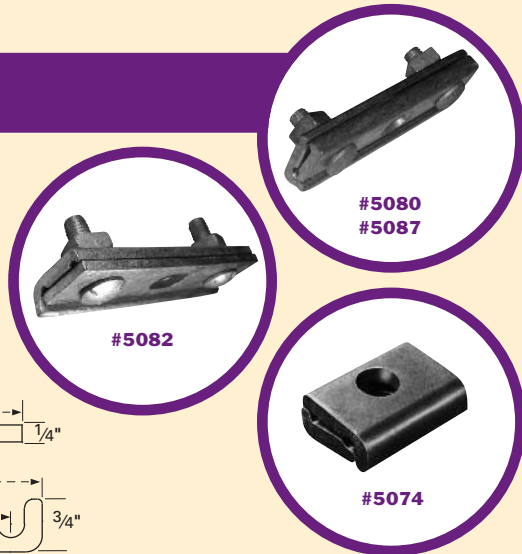
- Used for extending the length of an existing Guy Rod or adding an additional eye to an existing Anchor Rod.
- Clamp is comprised of two "L" Shaped Brackets and Three Carriage Bolts with Regular Square Nuts
- All Components are hot dip galvanized to meet ASTM Specification A153.



| PART NUMBER | DESCRIPTION     | CARTON QTY |
|-------------|-----------------|------------|
| 2105        | B Guy Rod Clamp | 5          |

## Cable Suspension Clamp

- Used to attach strand to straight line poles.
- Accepts 1/4" (6.6M) to 7/16" (16M) strand.
- 5080, 5082 and 5087 consist of two plates and two track bolts with attached square nuts.
- Hot dip galvanized to meet ASTM Specification A153.



| PART NUMBER | DESCRIPTION   | CENTER BOLT HOLE | LENGTH | BELL NUMBER | CARTON QTY |
|-------------|---|------------------|--------|-------------|------------|
| 5080        | B Cable Suspension Clamp                              | 1 1/16" x 15/16" | 5 3/4" | 400762282   | 25         |
| 5082        | Suspension Clamp with Keeper Plate                    | 1 1/16" x 15/16" | 5 3/4" |             | 25         |
| 5074        | One Bolt Cable Suspension Clamp                       | 1 1/16"          | 2 1/2" |             | 50         |
| 5087        | Three Bolt Cable Suspension Clamp for 3/4" Thru Bolts | 1 3/16"          | 5 3/4" |             | 25         |

## B Cable Suspension Clamp Stainless Steel

- Used in high corrosive environments to attach strand to straight line poles.
- All components constructed from high-strength #304 Stainless Steel.



| PART NUMBER | DESCRIPTION                              | CARTON QTY |
|-------------|--|------------|
| 5080SS      | B Cable Suspension Clamp Stainless Steel | 25         |



#5081



#5083 and #5088

### Angle Suspension Clamp

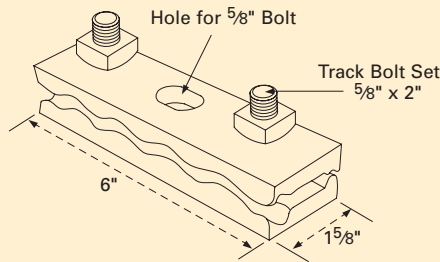
- Used for attaching strand to corner poles.
- Accepts 1/4" (6.6M) to 7/16" (16M) strand.
- Clamp consists of two mating plates and two track bolts with attached square nuts.
- One plate is flared at each end to facilitate pulling strand through the clamp and has a substantial projecting lip to retain the strand in the grooves.
- The center hole on the B Corner Suspension Clamp is for use with a 5/8" or 3/4" diameter bolt.
- CATV Corner Suspension Clamps are for use with a 5/8" diameter bolt.
- Hot dip galvanized to meet ASTM Specification A153.

| PART NUMBER | DESCRIPTION                                 | CENTER BOLT HOLE | WIDTH    | LENGTH | BELL NUMBER | CARTON QTY |
|-------------|---|------------------|----------|--------|-------------|------------|
| 5081        | B Corner Suspension Clamp                   | 13/16"           | 2 3/16"  | 7"     | 400762274   | 10         |
| 5083        | Corner Suspension Clamp for CATV            | 11/16"           | 1 11/16" | 7 1/4" |             | 10         |
| 5088        | Corner Suspension Clamp for 3/4" Thru Bolts | 13/16"           | 1 11/16" | 7 1/4" |             | 10         |



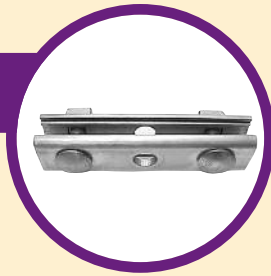
### C Cable Clamp

- Used to secure jacketed strand or self-supporting cable to telephone poles.
- Each clamp is comprised of two steel plates having an oval hole in the center and a serpentine groove.
- Clamp is equipped with two track bolts and two regular square nuts.
- Manufactured from Ductile Iron.
- May be used on in-line poles and at corners with a pull of 25' or less.
- Installed without slitting the web of the cable.
- The center hole provided accommodates a 5/8" diameter cable suspension bolt.
- All components are hot dip galvanized to meet ASTM Specification A153.

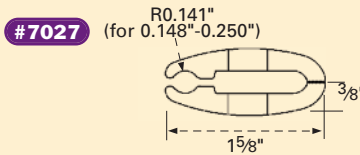
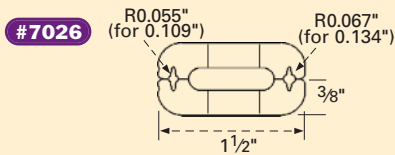


| PART NUMBER | DESCRIPTION   | BELL NUMBER | CARTON QTY |
|-------------|---------------|-------------|------------|
| 4080        | C Cable Clamp | 400121042   | 16         |

## Figure 8 Three-Bolt Suspension Clamp



- Used to secure Figure 8 Cable to telephone poles.
- Each Suspension Clamp is comprised of two aluminum plates, two 1/2" carriage bolts, and two square nuts.
- The plates are extruded and stamped from 6063-T6 Aluminum.
- Center hole accommodates 5/8" bolts.
- Figure 8 Three-Bolt Suspension Clamps are 6" long.
- Carriage bolt and nuts are formed from Grade 2 Steel.
- Carriage bolts and square nuts are hot dip galvanized to meet ASTM Specification A153.

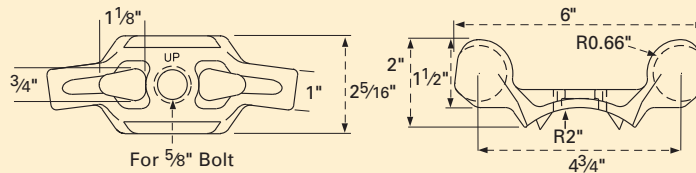


| PART NUMBER | DESCRIPTION  | CARTON QTY |
|-------------|--|------------|
| 7026        | .109" - .134" Figure 8 Three Bolt Suspension Clamp | 25         |
| 7027        | .148" - .250" Figure 8 Three Bolt Suspension Clamp | 25         |

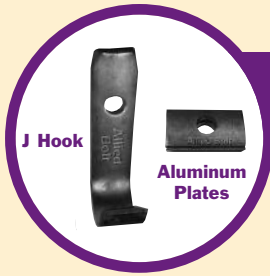
## Corner Attachment Bracket



- A pole attachment with center hole that is mounted with a 5/8" suspension bolt to accept guy grips and Strand Dead-ends.
- Used for cable runs at angles ranging from 35° to 60°.
- Back of bracket is curved with integral spurs for stability on pole.
- Ultimate tensile strength at 45° is 9,000 lbs.
- Casted from Ductile Iron for superior strength.
- Hot dip galvanized to meet ASTM Specification A153.

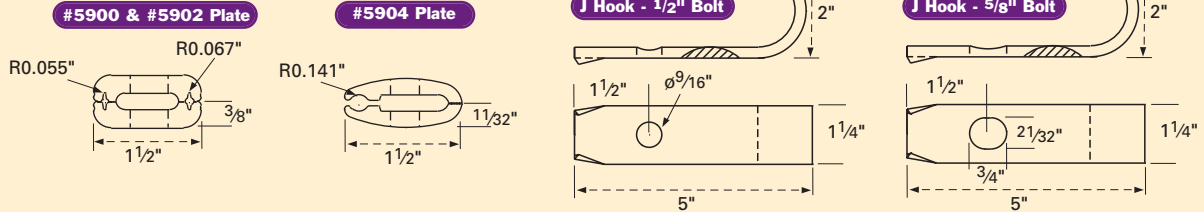


| PART NUMBER | DESCRIPTION               | CARTON QTY |
|-------------|---------------------------|------------|
| 5086        | Corner Attachment Bracket | 25         |



### Tangent Support Clamp

- Used to secure Figure 8 Cable to poles.
- Clamp plates and J hooks are extruded from Aluminum.
- J hooks are designed to dig into poles when installed, to prevent movement during tensioning of cable.
- Eliminates the need to pre-strip the messenger wire.



| PART NUMBER | MESSENGER SIZE RANGE | BOLT SIZE ACCOMMODATED | CARTON QTY |
|-------------|----------------------|------------------------|------------|
| 5900        | .109" to .134"       | 1/2"                   | 50         |
| 5902        | .109" to .134"       | 5/8"                   | 50         |
| 5904        | .148" to .250"       | 5/8"                   | 25         |

#### J Hook Only

| PART NUMBER | BOLT SIZE ACCOMMODATED | CARTON QTY |
|-------------|------------------------|------------|
| 5895        | 1/2"                   | 50         |
| 5897        | 5/8"                   | 50         |



### Messenger Support Clamp

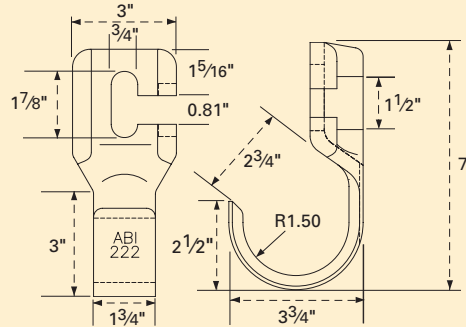
- Used to support Figure 8 Cable.
- The clip grips the messenger wire over the insulation, without damage to the insulation. Accommodates 5/16" to 7/16" messenger cable.
- Stamped from AISI 1018 Steel.
- Accepts a 1/2" machine bolt.
- Clip is hot dip galvanized to meet ASTM Specification A153,.

| PART NUMBER | DESCRIPTION             | CARTON QTY |
|-------------|-------------------------|------------|
| 10075       | Messenger Support Clamp | 100        |

## B Placing Hook

- B Placing Hook is used as a tool for installing Figure 8 Cable.
- A hollowed base on the top of hook allows installation over the nut and washer of the thru bolt.
- The horizontal slot enables the hook to be removed for re-use after cable is secured to the suspension clamp and thru bolt.

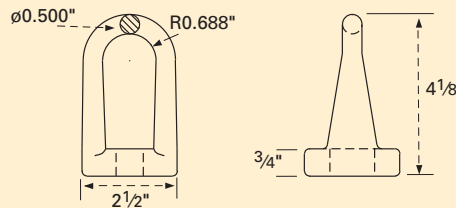
- Placing Hooks are forged from Ductile Iron for high-strength.
- Hot dip galvanized to meet ASTM Specification A153.



| PART NUMBER | DESCRIPTION    | CARTON QTY |
|-------------|----------------|------------|
| 222         | B Placing Hook | 10         |

## Standard Eyelet

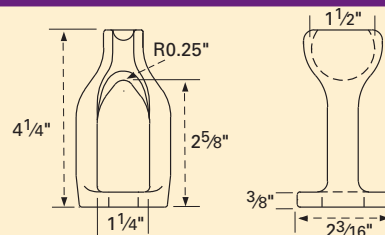
- Used with machine bolts for dead-ending.
- Forged from high strength AISI 1018 Steel.
- Rated to support a 22,000 lb. load.
- Hot dip galvanized to meet ASTM Specification A153.



| PART NUMBER | SIZE | SLOT SIZE        | CARTON QTY |
|-------------|------|------------------|------------|
| 2054        | 5/8" | 1 1/16" x 1 1/8" | 25         |
| 2055        | 3/4" | 1 3/16" x 1 1/8" | 25         |

## Straight Single Strand Eyelet

- Used with machine bolts or eyebolts for straightaway messenger dead-ending or guying.
- Forged from high strength AISI 1018 Steel.
- Rated to support a 30,000 lb. load.
- Hot dip galvanized to meet ASTM Specification A153.



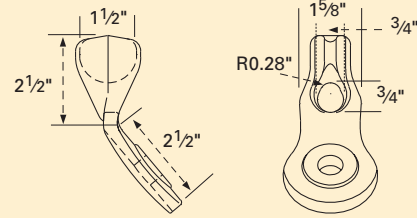
| PART NUMBER | DESCRIPTION                        | CARTON QTY |
|-------------|------------------------------------|------------|
| 2050        | 5/8" Straight Single Strand Eyelet | 25         |
| 2051        | 3/4" Straight Single Strand Eyelet | 25         |



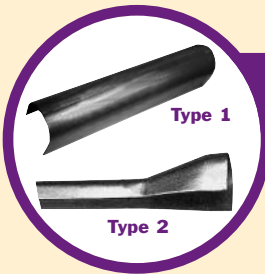


## Angled Single Strand Eyelet

- Used with machine bolts or eyebolts for down guying.
- Forged from high strength AISI 1018 Steel.
- Hot dip galvanized to meet ASTM Specification A153.
- Ultimate tensile strength at 45° is 28,000 lbs.



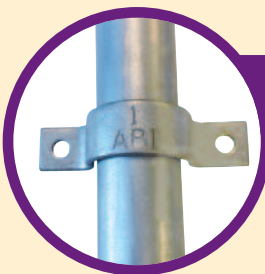
| PART NUMBER | DESCRIPTION                      | CARTON QTY |
|-------------|----------------------------------|------------|
| 2060        | 5/8" Angled Single Strand Eyelet | 25         |
| 2061        | 3/4" Angled Single Strand Eyelet | 25         |



## U Cable Guard

- Used in conjunction with straps to protect cable and wire running vertically down poles.
- Formed from 1018 pre-galvanized steel.
- The 9006-U1A and 9006-U1A5 are flared at one end to fit cast iron caps.

| PART NUMBER | LENGTH | GUARD WIDTH | TYPE | BELL NUMBER | CARTON QTY |
|-------------|--------|-------------|------|-------------|------------|
| 9006-U0     | 8'     | 3/4"        | 1    | 400314316   | 5          |
| 9006-U1     | 8'     | 1 1/8"      | 1    | 400314332   | 5          |
| 9006-U1A    | 8'     | 1 1/8"      | 2    | 400314357   | 5          |
| 9006-U2     | 8'     | 2 3/16"     | 1    | 400314373   | 5          |
| 9006-U3     | 8'     | 3 3/16"     | 1    | 400314399   | 2          |
| 9006-U4     | 8'     | 3 5/8"      | 1    | 400314407   | 2          |
| 9006-U05    | 5'     | 3/4"        | 1    |             | 5          |
| 9006-U15    | 5'     | 1 1/8"      | 1    | 400314324   | 5          |
| 9006-U1A5   | 5'     | 1 1/8"      | 2    | 400314340   | 5          |
| 9006-U25    | 5'     | 2 3/16"     | 1    | 400314365   | 5          |
| 9006-U35    | 5'     | 3 3/16"     | 1    | 400314381   | 2          |
| 9006-U45    | 5'     | 3 5/8"      | 1    |             | 2          |



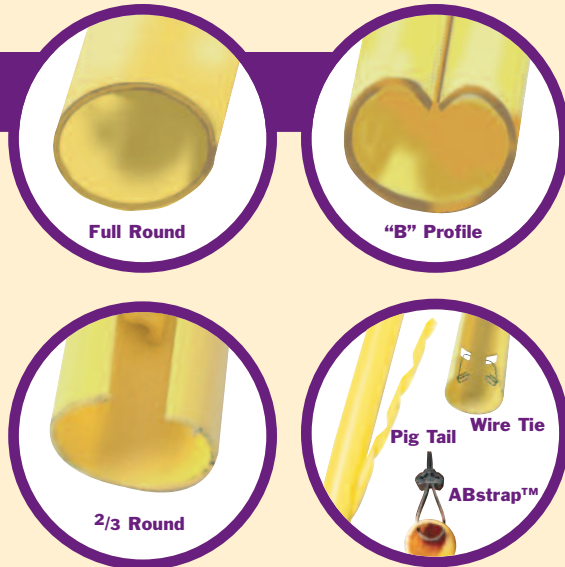
## U Cable Guard Strap

- Used for securing Cable Guards to utility poles.
- Stamped from AISI 1018 Steel.
- Size is stamped on each clamp.
- Hot dip galvanized to meet ASTM Specification A153.

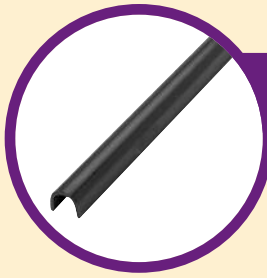
| PART NUMBER | SIZE | FOR GUARD WIDTH | SIZE STOCK  | MOUNTING HOLES | BELL NUMBER | INNER PACK QTY | CARTON QTY |
|-------------|------|-----------------|-------------|----------------|-------------|----------------|------------|
| 9005-U0     | U-0  | 3/4"            | .094 x 3/4" | 9/32"          | 400314753   | 50             | 200        |
| 9005-U1     | U-1  | 1 1/8"          | .125 x 3/4" | 9/32"          | 400314092   | 25             | 100        |
| 9005-U1A    | U-1A | 1 1/8"          | .125 x 3/4" | 9/32"          | 400314761   | 25             | 100        |
| 9005-U2     | U-2  | 2 3/16"         | .125 x 3/4" | 9/32"          | 400314779   | 25             | 200        |
| 9005-U3     | U-3  | 3 3/16"         | .187 x 1"   | 11/32"         | 400314787   |                | 25         |
| 9005-U4     | U-4  | 3 5/8"          | .187 x 1"   | 11/32"         | 400314795   |                | 25         |

## Plastic Guy Marker

- Used to provide a highly visible safeguard from exposed guy wires and anchor rods.
- Guards are provided in a highly visible yellow plastic.
- Molded from UV (Ultra Violet) light resistant polypropylene.
- Designed to be extremely impact-resistant.



| PART NUMBER | TUBE PROFILE | LENGTH | COLOR  | TUBE OD | ATTACHMENT TYPE      | CARTON QTY |
|-------------|--------------|--------|--------|---------|----------------------|------------|
| 11401       | Full Round   | 8'     | Yellow | 1¼"     | (1) Helical Pig Tail | 25         |
| 11402       | Full Round   | 8'     | Yellow | 1¼"     | (3) 13½" ABstrap™    | 25         |
| 11403       | Full Round   | 8'     | Yellow | 1½"     | (1) Helical Pig Tail | 25         |
| 11404       | Full Round   | 8'     | Yellow | 1½"     | (3) 13½" ABstrap™    | 25         |
| 11405       | Full Round   | 8'     | Yellow | 2"      | (1) Helical Pig Tail | 25         |
| 11406       | Full Round   | 8'     | Yellow | 2"      | (3) 13½" ABstrap™    | 15         |
| 11407       | Full Round   | 8'     | Grey   | 1¼"     | (1) Helical Pig Tail | 25         |
| 11408       | Full Round   | 8'     | Grey   | 1¼"     | (3) 13½" ABstrap™    | 25         |
| 11409       | Full Round   | 8'     | Grey   | 1½"     | (1) Helical Pig Tail | 25         |
| 11410       | Full Round   | 8'     | Grey   | 1½"     | (3) 13½" ABstrap™    | 25         |
| 11411       | Full Round   | 8'     | Grey   | 2"      | (1) Helical Pig Tail | 25         |
| 11412       | Full Round   | 8'     | Grey   | 2"      | (3) 13½" ABstrap™    | 25         |
| 11413       | "B" Profile  | 8'     | Yellow | 1¼"     | (1) Helical Pig Tail | 25         |
| 11414       | "B" Profile  | 8'     | Yellow | 1¼"     | (3) 13½" ABstrap™    | 25         |
| 11415       | "B" Profile  | 8'     | Yellow | 1½"     | (1) Helical Pig Tail | 25         |
| 11416       | "B" Profile  | 8'     | Yellow | 1½"     | (3) 13½" ABstrap™    | 25         |
| 11417       | "B" Profile  | 8'     | Yellow | 2"      | (1) Helical Pig Tail | 25         |
| 11418       | "B" Profile  | 8'     | Yellow | 2"      | (3) 13½" ABstrap™    | 25         |
| 11419       | "B" Profile  | 8'     | Grey   | 1¼"     | (1) Helical Pig Tail | 25         |
| 11420       | "B" Profile  | 8'     | Grey   | 1¼"     | (3) 13½" ABstrap™    | 25         |
| 11421       | "B" Profile  | 8'     | Grey   | 1½"     | (1) Helical Pig Tail | 25         |
| 11422       | "B" Profile  | 8'     | Grey   | 1½"     | (3) 13½" ABstrap™    | 25         |
| 11423       | "B" Profile  | 8'     | Grey   | 2"      | (1) Helical Pig Tail | 25         |
| 11424       | "B" Profile  | 8'     | Grey   | 2"      | (3) 13½" ABstrap™    | 25         |
| 11437       | 2/3" Round   | 7'     | Yellow | 2½"     | (3) Wire Ties        | 15         |
| 11438       | 2/3" Round   | 7'     | Grey   | 2½"     | (3) Wire Ties        | 15         |
| 12011       | 2/3" Round   | 8'     | Yellow | 2½"     | (3) Wire Ties        | 15         |
| 11440       | 2/3" Round   | 8'     | Grey   | 2½"     | (3) Wire Ties        | 15         |



## Ground Wire Molding

- Used to protect cable or ground wire on utility pole.
- Extruded from Polyvinyl Chloride (PVC).
- Standard color is Black. Gray is also available by adding a "G" at the end of part number.
- UV (Ultra Violet) light resistant.
- Fire resistant.
- Retains characteristics in severe temperature variations.
- Ground Wire Molding meets the impact testing requirements of ASTM D2444.

| PART NUMBER | SIZE      | CARTON QTY |
|-------------|-----------|------------|
| 11400       | 1/2" x 8' | 125        |
| 11441       | 5/8" x 8' | 80         |
| 11442       | 3/4" x 8' | 50         |
| 11443       | 1" x 8'   | 25         |



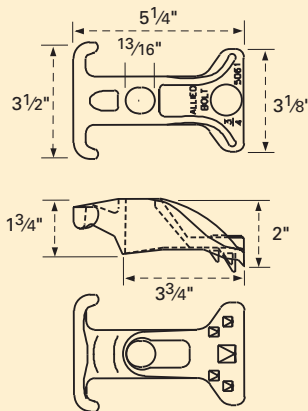
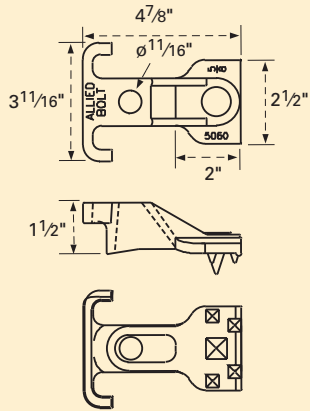
5060



5061

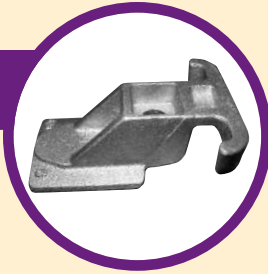
## B Guy Hook

- Used as a means of attaching guy wire to poles.
- Casted from Ductile Iron.
- Hot dip galvanized to meet ASTM Specification A153.

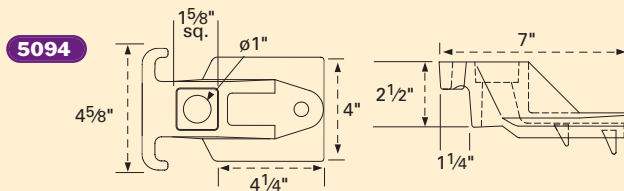
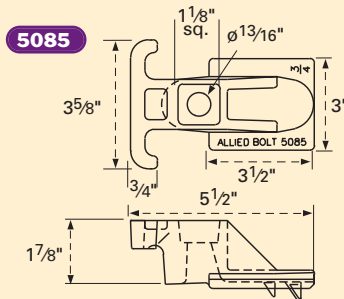
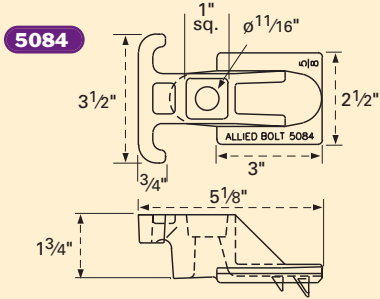


| PART NUMBER | SIZE | # OF BOLT HOLES | RATING      | BELL NUMBER | CARTON QTY |
|-------------|------|-----------------|-------------|-------------|------------|
| 5060        | 5/8" | 1               | 10,000 lbs. | 400149910   | 25         |
| 5061        | 3/4" | 1               | 15,000 lbs. | 400149928   | 25         |

## C Guy Hook



- Designed to accept a loop of strand, a strand grip, or a Strand Dead-end in down guy applications.
- Recessed bolt hole accepts head of Square Head Machine Bolts.
- Features a wide inner shoulder and broad heel pad to resist embedding.
- Features “chisel point” spurs to resist down slotting in pole.
- Cannot be used in “back to back” guying on pole.
- Forged from Ductile Iron.
- Hot dip galvanized to meet ASTM Specification A153.

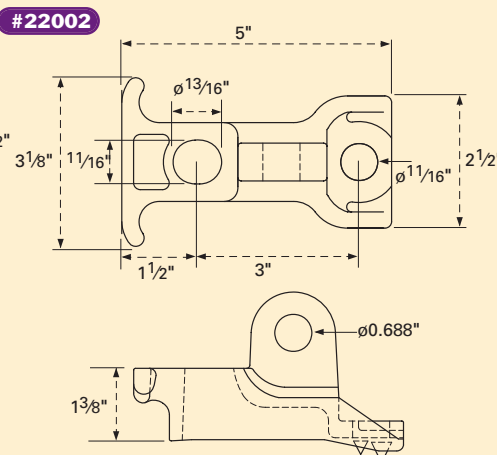
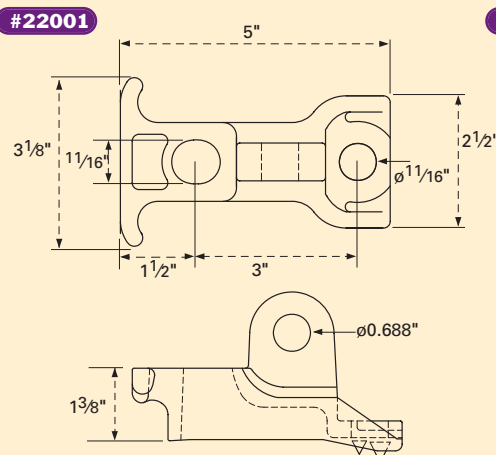


| PART NUMBER | SIZE            | RATING      | BELL NUMBER | CARTON QTY |
|-------------|-----------------|-------------|-------------|------------|
| 5084        | 5/8" C Guy Hook | 12,000 lbs. | 256000506   | 25         |
| 5085        | 3/4" C Guy Hook | 15,000 lbs. | 256000498   | 25         |
| 5094        | 1" C Guy Hook   | 25,000 lbs. |             | 10         |

## Combination Type Guy Hook



- Used to terminate guy wires or fiberglass guy strain insulators.
- Ultimate strength at 45° pull is 22,000 lbs on Eye Hole. Ultimate strength at 45° pull is 11,000 lbs on Guy Hook section.
- Forged from Ductile Iron.
- Designed for use on round or flat surfaces.
- Hot dip galvanized to meet ASTM Specification A153.



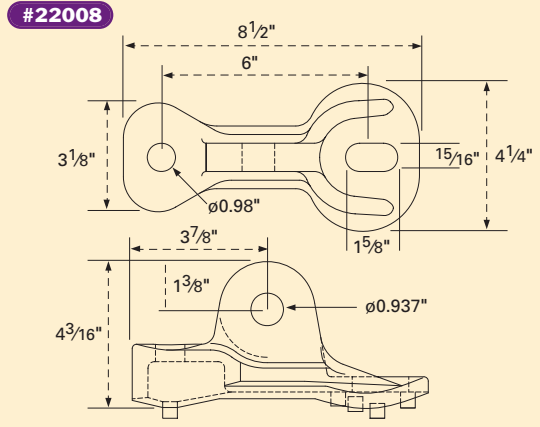
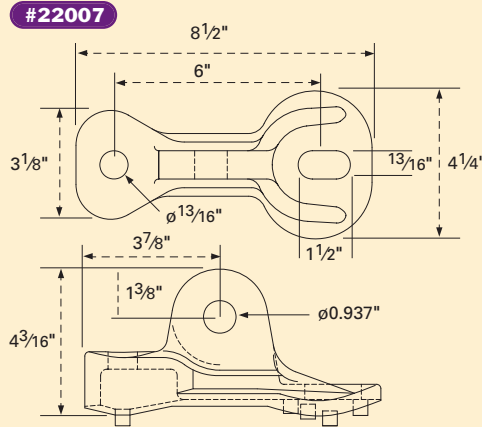
| PART NUMBER | MOUNTING HOLES      | CARTON QTY |
|-------------|---------------------|------------|
| 22001       | 1 1/16" and 1 1/16" | 20         |
| 22002       | 1 1/16" and 1 3/16" | 20         |

\*Add "LT" to part number for no spurs on Hook.



### Pole Eye Plate Guy Hook

- Used to attach guy strain insulators or other clevis secured devices to wood poles.
- Ultimate strength at 45° pull is 50,000 lbs.
- Forged from Ductile Iron.
- Designed for use on round or flat surfaces.
- Hot dip galvanized to meet ASTM Specification A153.

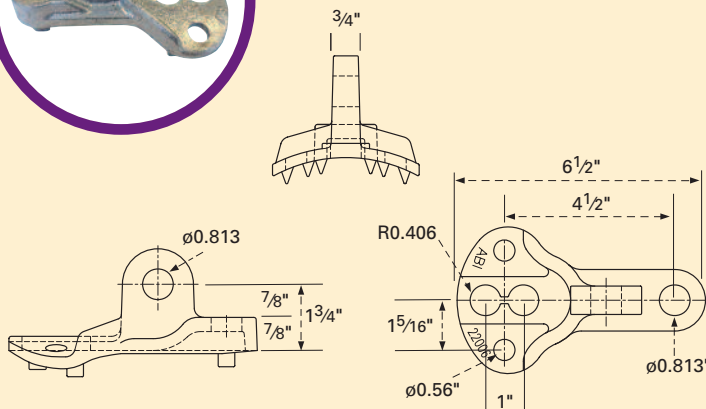


| PART NUMBER | MOUNTING HOLES    | CARTON QTY |
|-------------|-------------------|------------|
| 22007       | 13/16" and 13/16" | 10         |
| 22008       | 15/16" and 15/16" | 10         |



### Pole Eye Plate Attachment

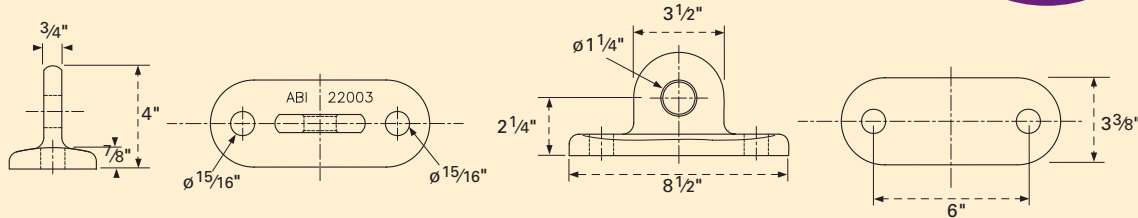
- Used to terminate fiberglass guy strain insulators or other clevis secured devices to wood poles.
- Mounting options are either two 3/4" diameter holes that are spaced 4" or 5" apart or one 3/4" mounting bolt and two 1/2" diameter lag screws.
- Ultimate strength (maximum value at fracture) is 27,000 lbs. at 45°.



| PART NUMBER | DESCRIPTION               | CARTON QTY |
|-------------|---------------------------|------------|
| 22006       | Pole Eye Plate Attachment | 25         |

## Dead-end Tee Guy Attachment

- Used for high-strength dead-ending.
- Ultimate strength is 60,000lbs.
- Hot dip galvanized to meet ASTM Specification A153.



| PART NUMBER | DESCRIPTION                 | CARTON QTY |
|-------------|-----------------------------|------------|
| 22003       | Dead-end Tee Guy Attachment | 10         |

## One Bolt Guy Attachment

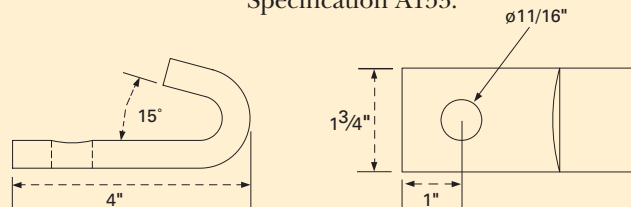
- Used as an economical means for fastening a guy loop to a utility pole.
- Ultimate strength at 45° pull is 19,000 lbs.
- Stamped from AISI 1018 Steel.
- Hole Diameter is 1 1/16".
- Offset angle is 45°.
- Hot dip galvanized to meet ASTM Specification A153.



| PART NUMBER | DESCRIPTION             | STOCK SIZE     | CARTON QTY |
|-------------|-------------------------|----------------|------------|
| 8070        | One Bolt Guy Attachment | .250" x 1 1/2" | 25         |

## J Guy Hook

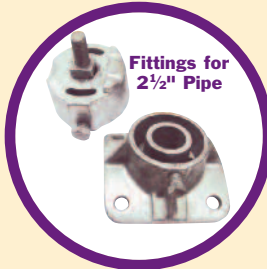
- J Guy Hooks prevent guy strand from creeping downward in wrapped guy applications.
- Ultimate strength at 45° pull is 10,000 lbs.
- J Guy Hooks have a curvature throughout to prevent damage to the guy strand.
- Hot Dip Galvanized to ASTM Specification A153.



| PART NUMBER | DESCRIPTION | CARTON QTY |
|-------------|-------------|------------|
| 2575        | J Guy Hook  | 50         |



Fittings for 2" Pipe

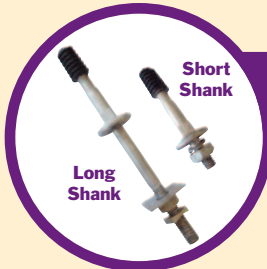


Fittings for 2 1/2" Pipe

## Sidewalk Guying Fixture

- These Malleable Iron fittings are used with standard pipe near sidewalks and buildings where there is insufficient space for standard guying and where head clearance must be maintained.
- Pole Plates consist of a Malleable Iron fitting, and a 1/2" x 1" bolt.
- Pole Plates are provided with a curved flange and 9/16" mounting holes.
- End Fitting for 2" pipe is provided with two malleable castings, two 1/2" x 2" Hex Bolts and one 1/2" x 1" Hex Bolt.
- End Fitting for 2 1/2" pipe is provided with a 5/8" x 2 1/2" Track Bolt, and requires a Guy Clamp for installation.
- All components are hot dip galvanized to meet ASTM Specification A153.

| PART NUMBER | DESCRIPTION                                    | CARTON QTY |
|-------------|--|------------|
| 1429        | Pole Plate and End Fitting for 2" Pipe Kit     | 1          |
| 1436        | Pole Plate for 2" Pipe                         | 5          |
| 1437        | End Fitting for 2" Pipe                        | 5          |
| 1450        | Pole Plate and End Fitting for 2 1/2" Pipe Kit | 1          |
| 1420        | Pole Plate for 2 1/2" Pipe                     | 5          |
| 1421        | End Fitting for 2 1/2" Pipe                    | 5          |

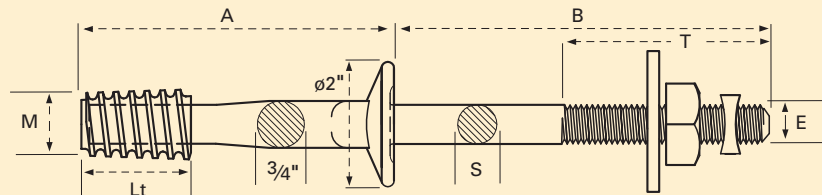


Long Shank

Short Shank

## Nylon Crossarm Pin (Low Voltage)

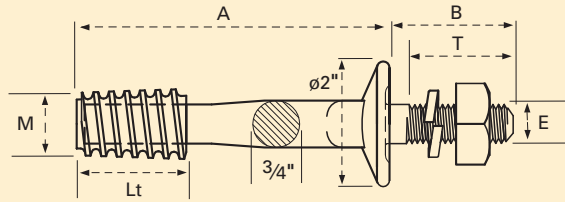
- Pins are used to mount spindle threaded insulators directly on crossarms.
- Pins are forged from one piece hearth steel.
- Broad base diameter distributes load without damaging crossarms.
- Provided with nylon threads to be environmentally friendly.
- Pin and components are hot dip galvanized to meet ASTM Specification A153.



### Long Shank

| PART NUMBER | DIM. M (Nylon Alloy) | DIM. Lt | DIM. E (UNC-2A Th'd) | DIM. S | DIM. A | DIM. B | DIM. T (Min.) | CARTON QTY |
|-------------|----------------------|---------|----------------------|--------|--------|--------|---------------|------------|
| 2711        | 1"                   | 1 3/4"  | 5/8"-11              | 5/8"   | 5"     | 5 3/4" | 3"            | 25         |
| 2712        | 1"                   | 1 3/4"  | 5/8"-11              | 5/8"   | 5"     | 6 1/2" | 3"            | 25         |
| 2713        | 1"                   | 1 3/4"  | 5/8"-11              | 5/8"   | 6"     | 5 3/4" | 3"            | 25         |
| 2714        | 1"                   | 1 3/4"  | 5/8"-11              | 5/8"   | 6"     | 6 1/2" | 3"            | 25         |
| 2716        | 1"                   | 1 3/4"  | 5/8"-11              | 5/8"   | 5"     | 8"     | 4"            | 25         |
| 2715        | 1"                   | 1 3/4"  | 3/4"-10              | 3/4"   | 6"     | 6 1/2" | 3 1/4"        | 20         |
| 2709        | 1"                   | 1 3/4"  | 5/8"-11              | 5/8"   | 6"     | 7 1/2" | 3 1/4"        | 25         |
| 2717        | 1"                   | 1 3/4"  | 3/4"-10              | 3/4"   | 6"     | 8"     | 4 1/2"        | 25         |

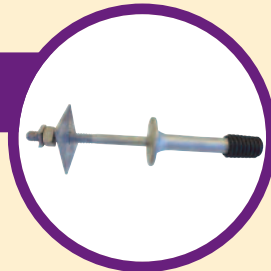
**Nylon Crossarm Pin (continued)**



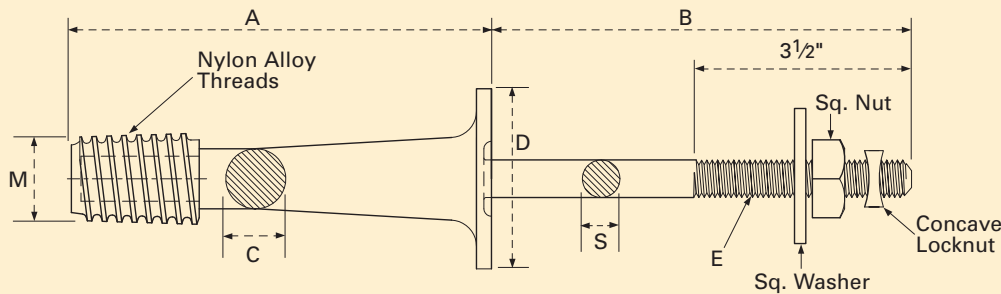
**Short Shank**

| PART NUMBER | DIM. M (Nylon Alloy) | DIM. Lt | DIM. E (UNC-2A Th'd) | DIM. A | DIM. B | DIM. T (Min.) | CARTON QTY |
|-------------|----------------------|---------|----------------------|--------|--------|---------------|------------|
| 2718        | 1"                   | 1 3/4"  | 5/8"-11              | 5"     | 1 1/2" | 1 1/4"        | 50         |
| 2719        | 1"                   | 1 3/4"  | 5/8"-11              | 6"     | 1 1/2" | 1 1/4"        | 45         |
| 2720        | 1"                   | 1 3/4"  | 5/8"-11              | 6"     | 2 1/2" | 2 3/8"        | 45         |
| 2721        | 1"                   | 1 3/4"  | 3/4"-10              | 6"     | 1 3/4" | 1 5/8"        | 25         |
| 2723        | 1"                   | 1 3/4"  | 3/4"-10              | 7"     | 2 1/2" | 2 3/8"        | 25         |

**High Voltage Pin**



- Broader collar ensures better engagement with crossarm.
- Pins are used to mount spindle threaded insulators directly on crossarms.
- Pins are forged from one piece hearth steel.
- Provided with nylon threads to be environmentally friendly.
- Pin and components are hot dip galvanized to meet ASTM Specification A153.



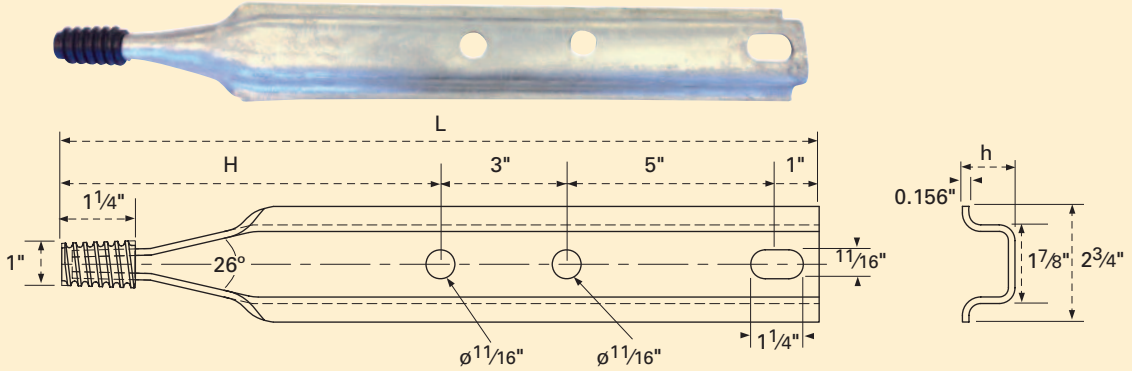
| PART NUMBER | DIM. M (Nylon Alloy) | DIM. E (UNC-2A Th'd) | DIM. S | DIM. C | DIM. A | DIM. B | DIM. D (Dia.) | SQ. WASHER | CARTON QTY |
|-------------|----------------------|----------------------|--------|--------|--------|--------|---------------|------------|------------|
| 2740        | 1"                   | 5/8"-11              | 5/8"   | 7/8"   | 6"     | 6 1/2" | 2 3/4"        | 2"         | 10         |
| 2741        | 1"                   | 5/8"-11              | 5/8"   | 7/8"   | 8"     | 5 3/4" | 3"            | 2"         | 10         |
| 2742        | 1"                   | 3/4"-10              | 3/4"   | 7/8"   | 6"     | 6 1/2" | 2 3/4"        | 2 1/4"     | 10         |
| 2743        | 1"                   | 3/4"-10              | 3/4"   | 7/8"   | 7"     | 6 1/2" | 2 3/4"        | 2 1/4"     | 10         |
| 2744        | 1 3/8"               | 5/8"-11              | 5/8"   | 1"     | 7"     | 7"     | 3"            | 2 1/4"     | 10         |
| 2745        | 1 3/8"               | 5/8"-10              | 3/4"   | 1"     | 8"     | 7"     | 3"            | 3"         | 10         |



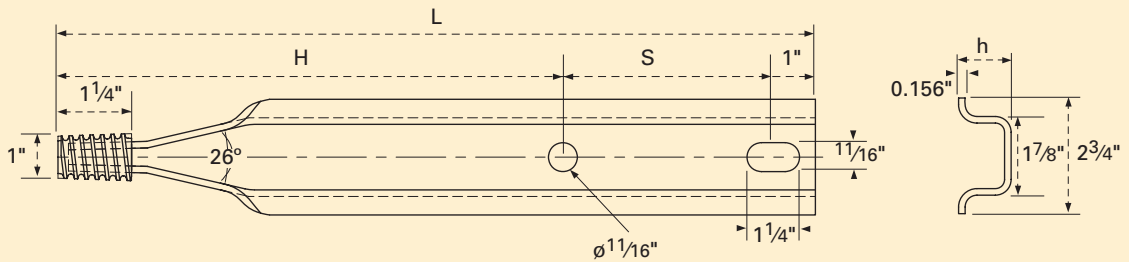


### Pole Top Pin

- Used to support Insulators on utility poles.
- Nylon threaded pins assure long-term performance and are environmentally friendly.
- 'U' channel is hot dip galvanized to meet ASTM Specification A153.



| PART NUMBER | DIM. L | DIM. H | DIM. h  | # OF HOLES | CARTON QTY |
|-------------|--------|--------|---------|------------|------------|
| 2730        | 18"    | 9"     | 1 1/4"  | 3          | 10         |
| 2731        | 20"    | 11"    | 1 1/4"  | 3          | 10         |
| 2732        | 24"    | 15"    | 1 9/16" | 3          | 10         |

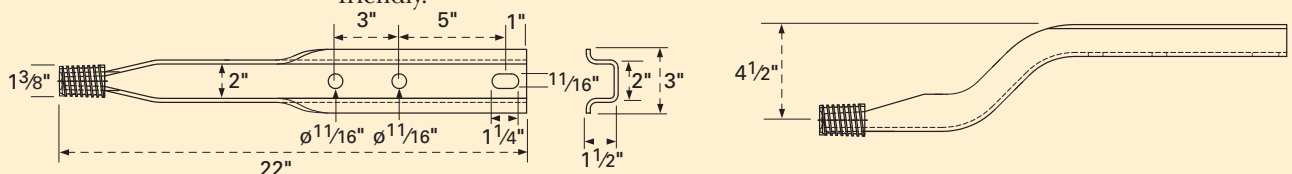


| PART NUMBER | DIM. L | DIM. H | DIM. h  | DIM. S | # OF HOLES | CARTON QTY |
|-------------|--------|--------|---------|--------|------------|------------|
| 2733        | 15"    | 9"     | 1 3/16" | 5"     | 2          | 10         |
| 2734        | 20"    | 11"    | 1 1/4"  | 8"     | 2          | 10         |



### Offset Pole Top Pin

- Used to support Insulators on sides of poles.
- Nylon threaded pins assure long-term performance and are environmentally friendly.
- Stamping is hot dip galvanized to meet ASTM Specification A153.



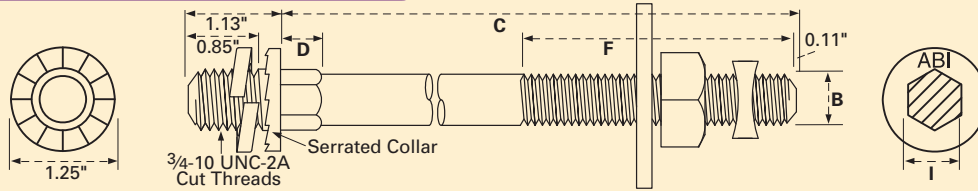
| PART NUMBER | DESCRIPTION         | CARTON QTY |
|-------------|---------------------|------------|
| 2735        | Offset Pole Top Pin | 5          |

## Insulator Stud

- Insulator Studs are used to mount insulators to wood crossarms (Long Shank) and insulator plates (Short Shank).
- All components are hot dip galvanized to meet ASTM Specification A153.
- Manufactured from Grade 2 Steel.

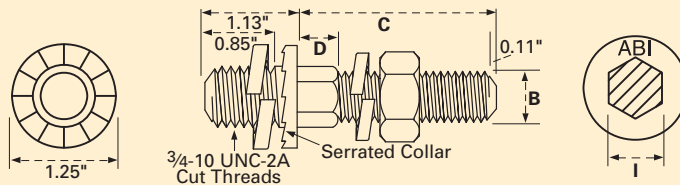


### Long Shank Insulator Stud



| PART NUMBER | DIM. B | DIM. C | DIM. D | DIM. F | DIM. I  | SQUARE WASHER | CARTON QTY |
|-------------|--------|--------|--------|--------|---------|---------------|------------|
| 345810      | 5/8"   | 7 1/2" | 1/2"   | 6"     | 9/16"   | 2 1/4"        | 25         |
| 345812      | 5/8"   | 10"    | 1/2"   | 6"     | 9/16"   | 2 1/4"        | 25         |
| 345814      | 5/8"   | 7"     | 1/2"   | 4"     | 9/16"   | 2 1/4"        | 25         |
| 345816      | 5/8"   | 10"    | 1/2"   | 6"     | 9/16"   | 2"            | 25         |
| 345818      | 5/8"   | 12"    | 1/2"   | 6"     | 9/16"   | 2"            | 25         |
| 345820      | 5/8"   | 14"    | 1/2"   | 8"     | 9/16"   | 2"            | 20         |
| 345822      | 3/4"   | 7 1/2" | 5/8"   | 4"     | 1 1/16" | 2 1/4"        | 25         |
| 345824      | 3/4"   | 10"    | 5/8"   | 6"     | 1 1/16" | 2 1/4"        | 25         |

### Short Shank Insulator Stud



| PART NUMBER | DIM. B | DIM. C | DIM. D | DIM. I  | CARTON QTY |
|-------------|--------|--------|--------|---------|------------|
| 345826      | 5/8"   | 1 3/4" | 1/4"   | 9/16"   | 25         |
| 345828      | 3/4"   | 1 3/4" | 1/4"   | 1 1/16" | 25         |

## Anti-Static Clip

- Used in ball and socket joints of suspension insulators to reduce interference and static electricity.
- Manufactured from AISI 1035 Spring Steel.
- Mechanically galvanized to meet ASTM B695.



| PART NUMBER | DESCRIPTION      | CARTON QTY |
|-------------|------------------|------------|
| 2965        | Anti-Static Clip | 550        |



#2951



#2950



#2955

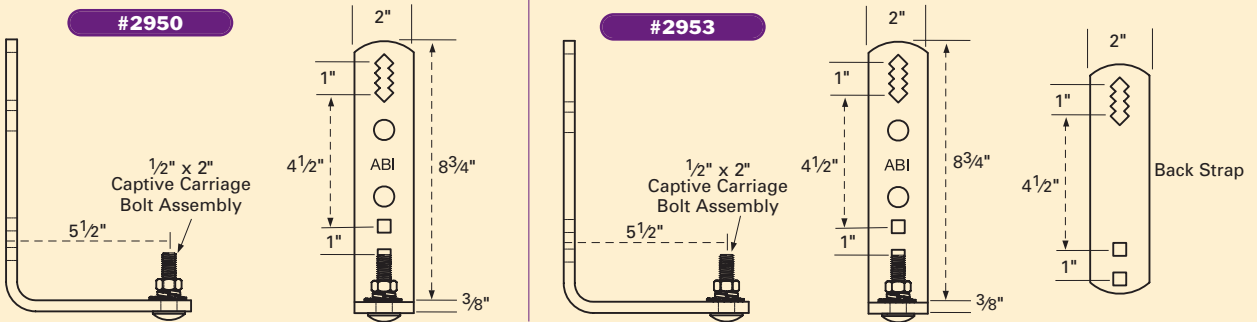
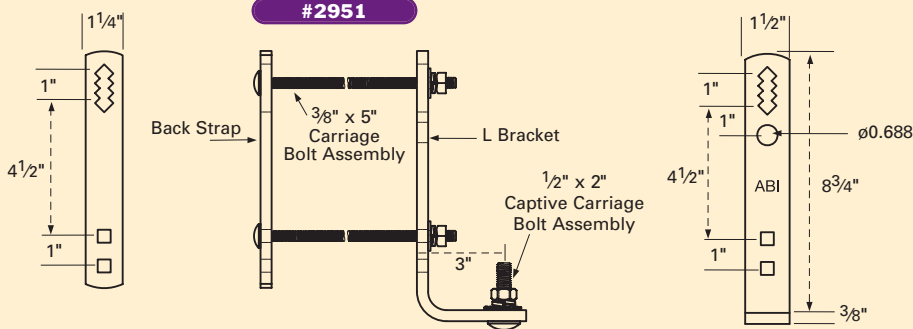
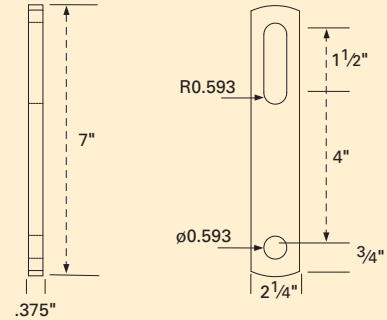


#2953

## Mounting Bracket

- Used for mounting cutouts, arrestors and terminators.
- #2951's ultimate vertical strength before bending is 575 lbs.
- #2953's ultimate vertical strength before bending is 1,000 lbs.
- Components are hot dip galvanized to meet ASTM Specification A153 (except #2955).

#2955



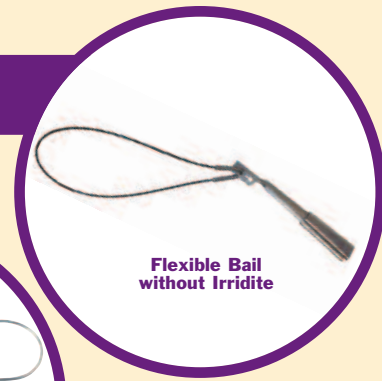
| PART NUMBER | STRAND SIZE                                    | CARTON QTY |
|-------------|--|------------|
| 2950        | L Bracket                                      | 16         |
| 2951        | L Bracket with Back Strap Assembled            | 16         |
| 2952        | L Bracket with Back Strap Assembled w/6" bolts | 16         |
| 2953        | L Bracket with Back Strap                      | 16         |
| 2955        | Aluminum Bracket                               | 100        |

## Service Wedge Clamp

- Service Wedge Clamps are used for low-tension dead-ending of ACSR, AAAC, and Aluminum Conductors.
- Wedge Clamp shells have pre-adhered grit to strengthen hold on conductor.
- Allied Bolt Wedge Clamps feature a notch in the bail wire to prevent the bail from disassembling after installation.
- All Wedge Clamps are formed from high-strength T2024 Aluminum.
- Bail wire is 6 $\frac{1}{2}$ " long and is formed from Type #304 Stainless Steel.



Rigid Bail  
with Irridite

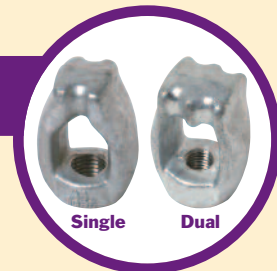


Flexible Bail  
without Irridite

| PART NUMBER | DESCRIPTION        | BAIL  | COND. ACSR | COND. ALUMINUM  | COND. AAAC | IRRIDITE | ULTIMATE STRENGTH | CARTON QTY |
|-------------|--------------------|-------|------------|-----------------|------------|----------|-------------------|------------|
| 10076       | Small Wedge Clamp  | Rigid | 2-6        | 1str.-6 sol.    | 2-6        | Yes      | 1,100 lbs.        | 100        |
| 10077       | Medium Wedge Clamp | Rigid | 1/0-4      | 2/0str.-2 sol.  | 1/0-4      | Yes      | 1,200 lbs.        | 50         |
| 10078       | Large Wedge Clamp  | Rigid | 4/0-2/0    | 4/0str.-2/0sol. | 4/0-2/0    | Yes      | 1,600 lbs.        | 25         |
| 10076NI     | Small Wedge Clamp  | Rigid | 2-6        | 1str.-6 sol.    | 2-6        | No       | 1,000 lbs.        | 100        |
| 10077NI     | Medium Wedge Clamp | Rigid | 1/0-4      | 2/0str.-2 sol.  | 1/0-4      | No       | 1,200 lbs.        | 50         |
| 10078NI     | Large Wedge Clamp  | Rigid | 4/0-2/0    | 4/0str.-2/0sol. | 4/0-2/0    | No       | 1,600 lbs.        | 25         |
| 10076NI-FL  | Small Wedge Clamp  | Flex. | 2-6        | 1str.-6 sol.    | 2-6        | No       | 1,100 lbs.        | 100        |
| 10077NI-FL  | Medium Wedge Clamp | Flex. | 1/0-4      | 2/0str.-2 sol.  | 1/0-4      | No       | 1,200 lbs.        | 50         |
| 10078NI-FL  | Large Wedge Clamp  | Flex. | 4/0-2/0    | 4/0str.-2/0sol. | 4/0-2/0    | No       | 1,600 lbs.        | 50         |

## Forged Eye Nut

- Used as an attachment to the threaded ends of bolts for guying and dead-ending.
- Rated to support a 24,000 lb. load.
- Forged from AISI 1018 Steel.
- Hot dip galvanized to meet ASTM Specification A153.



Single

Dual

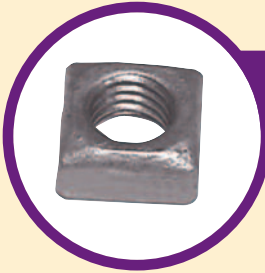
| PART NUMBER | SIZE               | STRAND ACCOMMODATED | BELL NUMBER | CARTON QTY |
|-------------|--------------------|---------------------|-------------|------------|
| 5050        | $\frac{5}{8}$ "-11 | Single              | 400162913   | 50         |
| 5051        | $\frac{3}{4}$ "-10 | Single              | 400162921   | 50         |
| 5045        | $\frac{5}{8}$ "-11 | Dual                |             | 25         |
| 5046        | $\frac{3}{4}$ "-10 | Dual                | 002746647   | 25         |



## Oval Eye Nut

- Used for dead-ending and guying from the threaded ends of crossarm bolts.
- Rated to support a 22,000 lb. load.
- Forged from AISI 1018 Steel.
- Hot dip galvanized to meet ASTM Specification A153.

| PART NUMBER | SIZE    | CARTON QTY |
|-------------|---------|------------|
| 5875        | 1/2"-13 | 50         |
| 5876        | 5/8"-11 | 50         |
| 5877        | 3/4"-10 | 50         |



## Regular Square Nut

- Used to fasten attachments to machine bolts, carriage bolts, and insulator pins.
- Manufactured from Grade 2 Steel.
- Hot dip galvanized to meet ASTM Specification A153.

| PART NUMBER | SIZE | ACROSS FLATS | INNER PACK SIZE | CARTON QTY |
|-------------|------|--------------|-----------------|------------|
| 90044       | 3/8" | 5/8"         | 100             | 800        |
| 8205        | 1/2" | 13/16"       | 100             | 400        |
| 8206        | 5/8" | 1"           |                 | 100        |
| 8200        | 3/4" | 1 1/8"       |                 | 100        |
| 8201        | 7/8" | 1 5/16"      |                 | 100        |
| 8375        | 1"   | 1 1/2"       |                 | 50         |



## Concave Locknut

- Used as a locking nut on the back of nuts.
- Hot dip galvanized to meet ASTM Specification A153.
- When concave side of locknut bears down top of square or hex nut, the arch is flattened, deflecting the nut threads from their true helix and causing them to firmly grip the bolt threads.

| PART NUMBER | SIZE        | INNER PACK QTY | CARTON QTY |
|-------------|-------------|----------------|------------|
| 22016       | 3/8" Square | 100            | 3,200      |
| 22009       | 1/2" Square |                | 100        |
| 22010       | 5/8" Square |                | 100        |
| 22011       | 3/4" Square |                | 100        |
| 22014       | 7/8" Square |                | 100        |
| 22015       | 1" Square   |                | 100        |
| 22012       | 5/8" Hex    | 100            | 400        |
| 22013       | 3/4" Hex    | 100            | 400        |

## Palnut Type Locknut

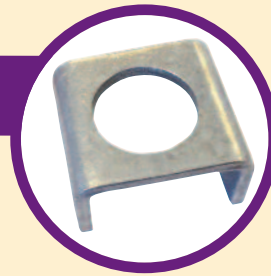
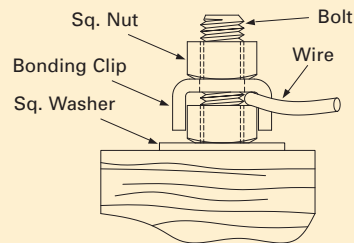
- These Spring Steel Lock Nuts are used in lieu of hex nuts to resist loosening caused by vibration.
- The Lock Nut's thread distorts when a load is applied and returns to its original shape when the load is released.
- Palnut Type Lock Nuts are stamped from AISI 1050 Spring Steel.
- Mechanically galvanized to meet ASTM Specification B695.



| PART NUMBER | SIZE | INNER PACK QTY | CARTON QTY |
|-------------|------|----------------|------------|
| 7851        | 3/8" | 100            | 1,600      |
| 7852        | 1/2" | 100            | 1,600      |
| 7853        | 5/8" | 100            | 1,600      |
| 7854        | 3/4" | 100            | 800        |
| 7855        | 7/8" | 100            | 400        |

## Bonding Clip

- Used to provide an easy bonding connection on bolt ends.
- Hot dip galvanized to meet ASTM Specification A153.
- Stamped from AISI 1018 Steel.



| PART NUMBER | SIZE | CARTON QTY |
|-------------|------|------------|
| 1212        | 1/2" | 500        |
| 1213        | 5/8" | 500        |
| 1214        | 3/4" | 250        |
| 1215        | 7/8" | 250        |
| 1216        | 1"   | 150        |



### Pole Gain

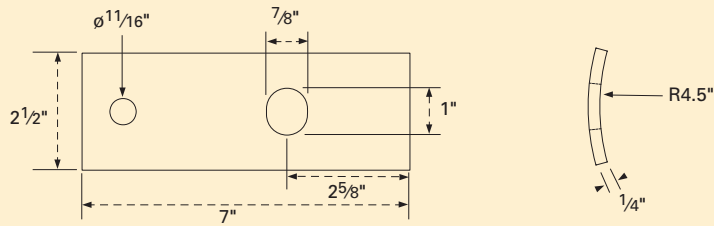
- Pole Gains provide enhanced stability for crossarms on utility poles.
- Pole Gains are used in lieu of cutting gains directly in pole.
- Stamped from AISI 1018 Steel.
- Hot dip galvanized to meet ASTM Specification A153.

| PART NUMBER | DESCRIPTION           | CARTON QTY |
|-------------|-----------------------|------------|
| 4078        | 5 1/4" x 4" Pole Gain | 25         |



### Lift Plate

- Allied Bolt Lift Plates are used with Lag Screws behind Angled Guy Bolt eyes to increase load capacity on heavy down guying. Lift Plates protect poles by distributing weight over a greater surface area.
- Lift Plates are curved on a 4 1/2" radius.
- Plates measure 2 1/2" x 7".
- Screw hole accomodates 1/2" Lag Screws.
- Hot dip galvanized to meet ASTM Specification A153.

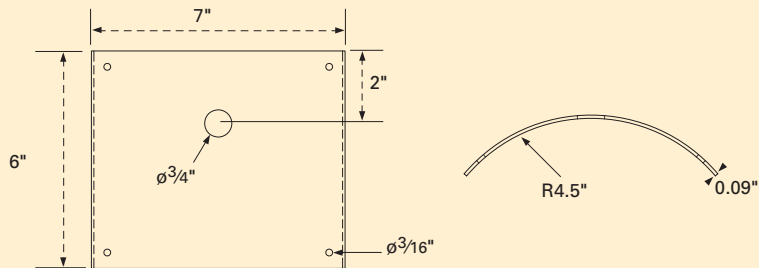


| PART NUMBER | DESCRIPTION | CARTON QTY |
|-------------|-------------|------------|
| 5182        | Lift Plate  | 25         |



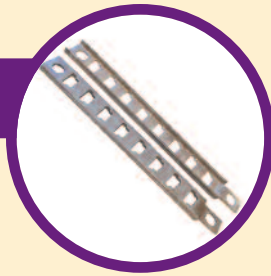
### Strain Plate

- Strain Plate is used to prevent strand from damaging wood utility poles.
- Plate is 6" wide x 7" long x 13 gauge thick. The Plate has a 4 1/2" radius.
- Each corner of plate has a 3/16" nail hole.
- Strain Plates are hot dip galvanized to meet ASTM Specification A153.



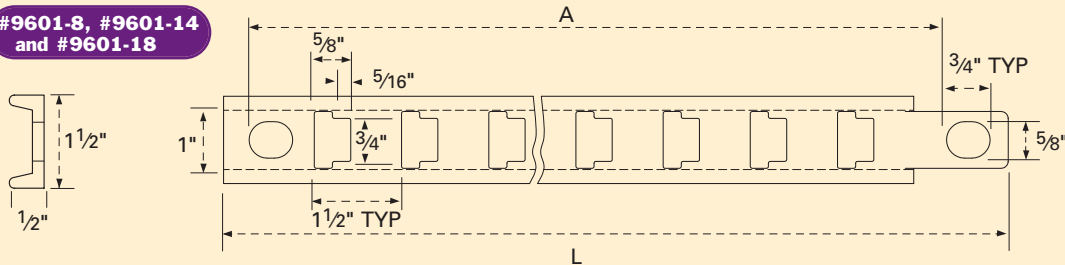
| PART NUMBER | DESCRIPTION  | CARTON QTY |
|-------------|--------------|------------|
| 5180        | Strain Plate | 25         |

## Underground Cable Rack

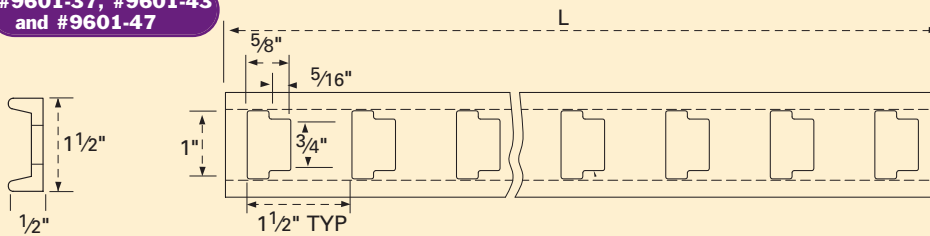


- Cable Racks are used in conjunction with Cable Rack Hooks to support cable runs.
- “T” slots of Cable Racks snugly lock Cable Rack hooks into place.
- Racks are rolled from AISI 1018 Steel.
- Hot dip galvanized to meet ASTM Specification A153.

#9601-8, #9601-14 and #9601-18



#9601-37, #9601-43 and #9601-47

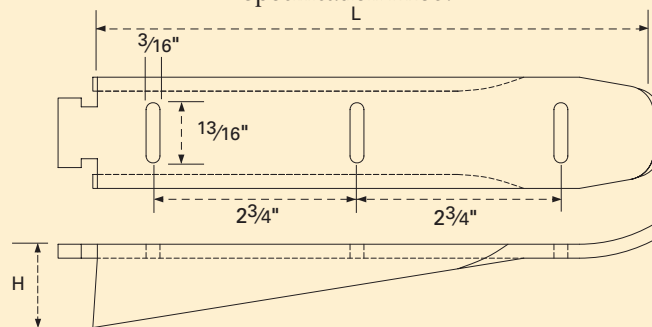


| PART NUMBER | SIZE (L) | (A)     | NUMBER OF “T” SLOTS | CARTON QTY |
|-------------|----------|---------|---------------------|------------|
| 9601-8      | 15"      | 13 1/2" | 8                   | 50         |
| 9601-14     | 24"      | 22 1/2" | 14                  | 10         |
| 9601-18     | 30"      | 28 1/2" | 18                  | 10         |
| 9601-37     | 55 1/4"  |         | 37                  | 1          |
| 9601-43     | 64 1/4"  |         | 43                  | 1          |
| 9601-47     | 70 1/4"  |         | 47                  | 1          |

## Cable Rack Hook



- Hooks are used in conjunction with underground cable racks to support cable runs.
- Cable Rack Hooks snugly lock into “T” slots of underground cable racks.
- Hooks have no sharp edges to damage cables and are curved upward to prevent cables from slipping off.
- Stamped from AISI 1018 Steel.
- Hot dip galvanized to meet ASTM Specification A153.



| PART NUMBER | SIZE (L)         | (H)    | CARTON QTY |
|-------------|------------------|--------|------------|
| 9600-4      | 4"               | 1 1/8" | 100        |
| 9600-7      | 7 1/2"           | 1 1/8" | 50         |
| 9600-10L    | 10"              | 1 1/8" | 25         |
| 9600-10     | 10" (Heavy Duty) | 2"     | 25         |
| 9600-14     | 14"              | 1 1/2" | 25         |
| 9600-18     | 18"              | 1 1/2" | 10         |





### Cable Rack Support

- Cable Rack Supports are used to mount Underground Cable Racks to walls inside manholes.
- #9610 provides a 3<sup>5</sup>/<sub>8</sub>" offset from wall.
- #9611 provides a 6<sup>9</sup>/<sub>16</sub>" offset from wall.
- Stamped from AISI 1018 Steel.
- Hot dip galvanized to meet ASTM Specification A153.

| PART NUMBER | SIZE  | CARTON QTY |
|-------------|---|------------|
| 9610        | 3 <sup>5</sup> / <sub>8</sub> " x 4 <sup>1</sup> / <sub>4</sub> " x 2 <sup>1</sup> / <sub>4</sub> " Cable Rack Support  | 25         |
| 9611        | 6 <sup>9</sup> / <sub>16</sub> " x 5 <sup>3</sup> / <sub>4</sub> " x 2 <sup>5</sup> / <sub>8</sub> " Cable Rack Support | 25         |



### Cable Rack Clip

- Clip prevents installed Cable Hooks from loosening in Racks. Clip is inserted in groove to lock in an installed Hook.
- Clip is formed from spring Steel.

| PART NUMBER | DESCRIPTION     | CARTON QTY |
|-------------|-----------------|------------|
| 9615        | Cable Rack Clip | 100        |

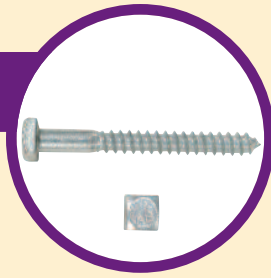


### Drive Screw

- Used to attach poleline hardware to utility poles and other wood structures.
- Manufactured with curved upward "fetter" type thread that can be either wrenched or driven.
- Supplied with square head unless noted otherwise.
- Available with regular point, drive point, and twist drive point.
- Bolt head marking (ABI) appears on head of each bolt, and is registered with the U.S. Patent Office per the Fastener Insignia Act.
- Manufactured from Grade 2 Steel.
- Hot dip galvanized to meet ASTM Specification A153.

| PART NUMBER | DESCRIPTION                          | BELL NUMBER | INNER PACK QTY | CARTON QTY |
|-------------|--------------------------------------|-------------|----------------|------------|
| 358         | 1/4" x 2" Hex Head Regular Point     |             | 50             | 800        |
| 367         | 1/4" x 2 1/2" Hex Head Regular Point |             | 50             | 800        |
| 372         | 1/4" x 2 1/2" Regular Point          | 400262143   | 50             | 800        |
| 377         | 5/16" x 3" Regular Point             | 400262150   | 50             | 400        |
| 530         | 3/8" x 2 1/2" Regular Point          |             | 50             | 200        |
| 3760        | 3/8" x 3" Drive Point                |             | 50             | 200        |
| 7220        | 3/8" x 3" Hex Head Drive Point       |             | 100            | 600        |
| 531         | 3/8" x 4" Regular Point              |             | 50             | 200        |
| 378         | 3/8" x 4" Drive Point                | 400262168   | 50             | 200        |
| 37605       | 1/2" x 3" Drive Point                |             | 50             | 200        |
| 529         | 1/2" x 4" Drive Point                |             | 50             | 200        |
| 5290        | 1/2" x 4" Twist Drive                |             | 50             | 200        |
| 532         | 1/2" x 4" Regular Point              |             | 50             | 200        |
| 379         | 1/2" x 4 1/2" Twist Drive            | 400262176   |                | 200        |
| 743         | 1/2" x 6 1/2" Twist Drive            | 400262184   |                | 100        |
| 7850        | 5/8" x 6" Drive Point                |             |                | 50         |

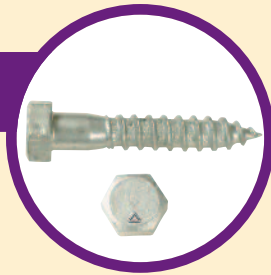
## Coach Screw (Square Head Lag Screw)



- Used in outside plant construction for making attachments to utility poles and other wood structures.
- Formed from Grade 2 Steel.
- Bolt head marking (ABI) appears on head of each bolt, and is registered with the U.S. Patent Office per the Fastener Insignia Act.
- Lag Screws have a Rockwell Hardness ranging from B70-B100.
- Mechanically galvanized to meet ASTM Specification B695.

| PART NUMBER | SIZE           | MINIMUM THREAD LENGTH | SQUARE SIZE | BELL NUMBER | INNER PACK QTY | CARTON QTY |
|-------------|----------------|-----------------------|-------------|-------------|----------------|------------|
| 129         | 1/4" x 2"      | 1 1/2"                | 3/8"        | 400262093   | 25             | 800        |
| 522         | 1/4" x 2"      | 1 1/2"                | 3/8"        |             | 50             | 800        |
| 523         | 1/4" x 2 1/2"  | 1 3/4"                | 3/8"        |             | 50             | 800        |
| 130         | 5/16" x 2 1/2" | 1 3/4"                | 1/2"        | 400262101   | 25             | 400        |
| 131         | 5/16" x 3"     | 2"                    | 1/2"        | 400262119   | 50             | 400        |

## Hex Lag Screw



- Used to attach Pole Line Hardware to utility poles and other wood structures.
- Formed from Grade 2 Steel.
- Lag Screws have a Rockwell Hardness ranging from B70-B100.
- Hot dip galvanized to meet ASTM Specification A153.

| PART NUMBER | SIZE           | MINIMUM THREAD LENGTH | HEX SIZE | BELL NUMBER | INNER PACK QTY | CARTON QTY |
|-------------|----------------|-----------------------|----------|-------------|----------------|------------|
| 932         | 1/4" x 1"      | 1"                    | 7/16"    |             | 100            | 1,600      |
| 870         | 1/4" x 1 1/4"  | 1 1/4"                | 7/16"    |             | 100            | 1,600      |
| 85          | 1/4" x 1 1/2"  | 1 1/4"                | 7/16"    | 700238120   | 100            | 1,600      |
| 719         | 1/4" x 2"      | 1 1/2"                | 7/16"    | 700094212   | 100            | 800        |
| 933         | 1/4" x 2 1/2"  | 1 3/4"                | 7/16"    |             | 100            | 400        |
| 762         | 1/4" x 3"      | 2"                    | 7/16"    |             | 100            | 400        |
| 765         | 1/4" x 3 1/2"  | 2 1/4"                | 7/16"    |             | 50             | 200        |
| 766         | 1/4" x 4"      | 2 1/2"                | 7/16"    |             | 50             | 200        |
| 776         | 1/4" x 4 1/2"  | 2 3/4"                | 7/16"    |             | 50             | 200        |
| 780         | 1/4" x 5"      | 3"                    | 7/16"    |             | 50             | 200        |
| 781         | 1/4" x 6"      | 3 1/2"                | 7/16"    |             | 50             | 200        |
| 47          | 5/16" x 1 1/2" | 1 1/4"                | 1/2"     | 700238114   | 100            | 800        |
| 768         | 5/16" x 2"     | 1 1/2"                | 1/2"     | 996085809   | 100            | 400        |
| 230         | 5/16" x 2 1/2" | 1 3/4"                | 1/2"     |             | 50             | 400        |
| 783         | 5/16" x 3"     | 2"                    | 1/2"     |             | 100            | 400        |
| 784         | 5/16" x 3 1/2" | 2 1/4"                | 1/2"     |             | 50             | 200        |
| 785         | 5/16" x 4"     | 2 1/2"                | 1/2"     |             | 50             | 200        |
| 786         | 5/16" x 4 1/2" | 2 3/4"                | 1/2"     |             | 50             | 200        |
| 789         | 5/16" x 5"     | 3"                    | 1/2"     |             | 50             | 200        |
| 791         | 5/16" x 6"     | 3 1/2"                | 1/2"     |             | 50             | 200        |
| 2003        | 3/8" x 1"      | 1"                    | 9/16"    |             | 50             | 400        |
| 579         | 3/8" x 1 1/2"  | 1 1/4"                | 9/16"    |             | 100            | 800        |
| 721         | 3/8" x 2"      | 1 1/2"                | 9/16"    | 000218263   | 100            | 400        |
| 170         | 3/8" x 2 1/2"  | 1 3/4"                | 9/16"    |             | 100            | 400        |
| 722         | 3/8" x 3"      | 2"                    | 9/16"    |             | 100            | 400        |
| 792         | 3/8" x 3 1/2"  | 2 1/4"                | 9/16"    |             | 50             | 200        |
| 582         | 3/8" x 4"      | 2 1/2"                | 9/16"    |             | 50             | 200        |
| 793         | 3/8" x 4 1/2"  | 2 3/4"                | 9/16"    |             | 50             | 200        |

\* Please add "SS" to the part number for Stainless Steel (304).

**Hex Lag Screw (continued)**

| PART NUMBER | SIZE          | MINIMUM THREAD LENGTH | HEX SIZE | BELL NUMBER | INNER PACK QTY | CARTON QTY |
|-------------|---------------|-----------------------|----------|-------------|----------------|------------|
| 794         | 3/8" x 5"     | 3"                    | 1/2"     |             | 50             | 200        |
| 795         | 3/8" x 6"     | 3 1/2"                | 1/2"     |             | 50             | 200        |
| 1686        | 1/2" x 1 1/2" | 1 1/4"                | 3/4"     |             | 50             | 400        |
| 720         | 1/2" x 2"     | 1 1/2"                | 3/4"     |             | 100            | 400        |
| 796         | 1/2" x 2 1/2" | 1 3/4"                | 3/4"     |             | 50             | 200        |
| 581         | 1/2" x 3"     | 2"                    | 3/4"     |             | 50             | 200        |
| 797         | 1/2" x 3 1/2" | 2 1/4"                | 3/4"     |             | 50             | 200        |
| 580         | 1/2" x 4"     | 2 1/2"                | 3/4"     |             | 50             | 200        |
| 584         | 1/2" x 4 1/2" | 2 3/4"                | 3/4"     |             | 50             | 200        |
| 588         | 1/2" x 5"     | 3"                    | 3/4"     |             | 50             | 200        |
| 589         | 1/2" x 6"     | 3 1/2"                | 3/4"     |             |                | 50         |
| 590         | 1/2" x 7"     | 4"                    | 3/4"     |             | 50             | 400        |
| 1507        | 5/8" x 5"     | 3"                    | 15/16"   |             | 25             | 100        |

\* Please add "SS" to the part number for Stainless Steel (304).

**Hex Lag Screw Drive Point with Permaseal™ Washer**

- A hex lag screw with a conically shaped steel washer bonded to a similar shaped rubber-like piece which has a slightly smaller inside and outside diameter.
- Protects against leakage.
- Reduces chance of fastener coming loose due to vibration.
- Minimizes damage to mating surface.
- Lag screws and steel washer are mechanically galvanized per ASTM Specification B695.
- Drive Point allows lag screw to be hammered in partially to ease installation.

| PART NUMBER | SIZE          | CARTON QTY |
|-------------|---------------|------------|
| 7190DW      | 1/4" x 2"     | 1000       |
| 7191DW      | 1/4" x 2 1/2" | 1000       |
| 7192DW      | 1/4" x 3"     | 1000       |
| 1710DW      | 1/4" x 4"     | 500        |

**Hex Lag Screw with Permaseal™ Washer**

- A hex lag screw with a conically shaped steel washer bonded to a similar shaped rubber-like piece which has a slightly smaller inside and outside diameter.
- Protects against leakage.
- Reduces chance of fastener coming loose due to vibration.
- Minimizes damage to mating surface.
- Washer is stamped from Grade 2 Steel.
- Rubber is cut from Style 40 EPDM sheet.
- Lag screws and steel washer are hot dip galvanized per ASTM Specification A153.

| PART NUMBER | SIZE          | CARTON QTY |
|-------------|---------------|------------|
| 7190        | 1/4" x 2"     | 1000       |
| 7191        | 1/4" x 2 1/2" | 1000       |
| 7192        | 1/4" x 3"     | 1000       |
| 1710        | 1/4" x 4"     | 500        |

## B Cable Suspension Screw

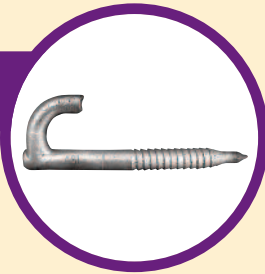
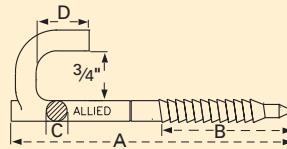
- Used in attaching suspension clamps to a jointly used pole where the use of a cable suspension bolt would result in improper clearance from another Utility's vertical run.
- Supplied with a Regular Square Nut.
- Hot dip galvanized to meet ASTM Specification A153.



| PART NUMBER | DESCRIPTION              | LAG SCREW LENGTH | MACHINE BOLT SIZE | BELL NUMBER | CARTON QTY |
|-------------|--------------------------|------------------|-------------------|-------------|------------|
| 845         | B Cable Suspension Screw | 5 1/2"           | 5/8" x 2 1/4"     | 400262507   | 50         |

## Drive Hook

- Used to support drop wire clamps, deadend clamps, and service drops on utility poles and buildings.
- Manufactured with curved upward "fetter" type thread that can be either wrenched or driven.
- Knurled ring provided to ensure proper driving depth.
- Offset flat head to ease driving.
- 920 and 2001 are formed from AISI 1018 Steel.
- 920 and 2001 are hot dip galvanized to meet ASTM Specification A153.
- 9200 formed from #316 Stainless Steel.
- Manufacture's mark (ABI) on shank for traceability.



| PART NUMBER | SIZE                           | A      | B      | C     | D      | BELL NUMBER | INNER PACK QTY | CARTON QTY |
|-------------|--------------------------------|--------|--------|-------|--------|-------------|----------------|------------|
| 2001        | 5/16" x 3 1/2"                 | 3 1/2" | 2"     | .312" | 3/4"   |             |                | 500        |
| 920         | 7/16" x 4 3/4"                 | 4 3/4" | 2 1/2" | .437" | 13/16" | 400314530   | 25             | 200        |
| 9200        | 7/16" x 4 3/4" Stainless Steel | 4 3/4" | 2 1/2" | .437" | 13/16" |             | 25             | 200        |

## B Staple (Cut Point)

- Used for securing wires and strand to utility poles.
- Features cut points for easy hammering into wood.
- Formed from AISI 1008 Steel.
- Zinc plated to meet ASTM Specification F1941.



| PART NUMBER | SIZE   | LENGTH | INSIDE WIDTH | WIRE DIAMETER | PIECES PER LB. | BELL NUMBER | INNER PACK QTY | CARTON QTY |
|-------------|--------|--------|--------------|---------------|----------------|-------------|----------------|------------|
| 738         | 3/4"   | 3/4"   | 1/4"         | .148"         | 160            | 400270237   | 1 lb.          | 40 lb.     |
| 699         | 1 1/4" | 1 1/4" | 1/4"         | .148"         | 74             | 400270245   | 1 lb.          | 32 lb.     |
| 695         | 1 1/2" | 1 1/2" | 1/4"         | .148"         | 72             | 400270245   | 1 lb.          | 32 lb.     |
| 696         | 1 1/2" | 1 1/2" | 5/16"        | .148"         | 60             | 400270245   | 1 lb.          | 32 lb.     |
| 698         | 2"     | 2"     | 3/8"         | .162"         | 40             | 400270252   | 1 lb.          | 32 lb.     |

• Screws (Pole)  
• Staples

POLELINE HARDWARE



## Barbed Staple

- Used to attach ground wire to hard wood utility poles.
- Heavy gauge prevents breakage.
- Barbs prevent staple from “creeping” out.
- Hot dip galvanized to meet ASTM Specification A153.

| PART NUMBER | LENGTH | INSIDE WIDTH | GAUGE | INNER PACK QTY | CARTON QTY |
|-------------|--------|--------------|-------|----------------|------------|
| 22096       | 1½"    | ¾"           | .131" | 100            | 800        |
| 22097       | 2"     | ¾"           | .131" | 100            | 800        |
| 22099       | 2"     | ⅝"           | .165" | 100            | 800        |
| 22098       | 3"     | 1⅛"          | .218" | 100            | 400        |



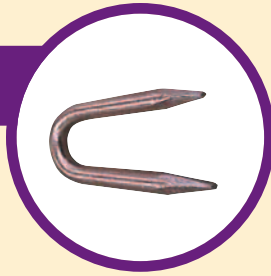
## Galvanized Staple (Rolled Point)

- Used to secure ground wire and molding to utility poles.
- Manufactured from AISI 1010 Steel.
- Hot dip galvanized to meet ASTM Specification A153.

| PART NUMBER | LENGTH | INSIDE WIDTH | WIRE DIAMETER | FOR GROUND WIRE MOLDING SIZE | INNER PACK QTY | CARTON QTY |
|-------------|--------|--------------|---------------|------------------------------|----------------|------------|
| 25112       | 1"     | ¾"           | .125"         |                              | 100            | 3,200      |
| 25116       | 1½"    | ¾"           | .148"         |                              | 100            | 800        |
| 25117       | 1¾"    | ¾"           | .148"         |                              | 100            | 400        |
| 25021       | 1¾"    | ⅝"           | .187"         | ½"                           | 100            | 400        |
| 25115       | 2"     | ½"           | .162"         |                              | 100            | 800        |
| 25003       | 2"     | ⅝"           | .162"         |                              | 100            | 400        |
| 25022       | 2"     | ¾"           | .187"         | ⅝"                           | 100            | 400        |
| 25004       | 2"     | 1⅛"          | .187"         |                              | 100            | 800        |
| 25023       | 2¼"    | ⅞"           | .187"         | ¾"                           | 100            | 400        |
| 25024       | 2½"    | 1¼"          | .250"         | 1"                           |                | 100        |
| 25005       | 3"     | 1⅛"          | .250"         |                              | 100            | 400        |
| 25113       | 3"     | 1½"          | .250"         |                              | 100            | 400        |
| 25114       | 3½"    | 1¾"          | .250"         |                              |                | 100        |

## Copper Coated Staple (Rolled Point)

- Used to secure ground wire to utility poles.
- Manufactured from AISI 1010 Steel.
- Copper is electrically deposited on staple to ensure a smooth long-lasting coating.



| PART NUMBER | LENGTH | INSIDE WIDTH | WIRE DIAMETER | INNER PACK QTY | CARTON QTY |
|-------------|--------|--------------|---------------|----------------|------------|
| 25002       | 1"     | 1/4"         | .114"         | 100            | 4,000      |
| 25001       | 1 1/4" | 1/4"         | .114"         | 100            | 3,200      |
| 25007       | 1 1/2" | 5/16"        | .144"         | 100            | 1,600      |
| 25008       | 1 1/2" | 3/8"         | .144"         | 100            | 800        |
| 25009       | 1 3/4" | 3/8"         | .144"         | 100            | 800        |
| 25010       | 2"     | 1/2"         | .162"         | 100            | 800        |
| 25011       | 2"     | 5/8"         | .162"         | 100            | 400        |
| 25012       | 2"     | 1 1/16"      | .187"         | 100            | 400        |
| 25013       | 2 1/2" | 1/2"         | .250"         | 100            | 400        |
| 25014       | 2 1/2" | 1 1/16"      | .187"         |                | 100        |
| 25015       | 3"     | 3/4"         | .250"         |                | 100        |
| 25016       | 3"     | 1"           | .250"         |                | 100        |
| 25017       | 3"     | 1 1/16"      | .250"         |                | 100        |
| 25018       | 3"     | 1 1/2"       | .250"         |                | 100        |
| 25019       | 3 1/2" | 1 1/2"       | .250"         |                | 100        |

## Detachable Pole Step & Mount with Lag Screw

- Mounts are used as a foothold below the first permanent step on wood utility poles. Two more of these steps are used to assist linemen in gaining access to permanent steps at higher levels.
- Steps are upturned and the inner end is perfectly sized to engage mounting plates.
- The #843 consists of a special headed lag screw and a heavy-duty mounting plate.
- Slide On Pole Step Mount accommodates 3/8" Lag Screws.
- All components are manufactured from AISI 1018 Steel.
- Hot dip galvanized to meet ASTM Specification A153.



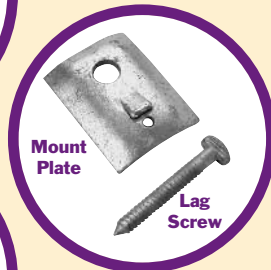
Slide On Pole Step Mount



Detachable Pole Step



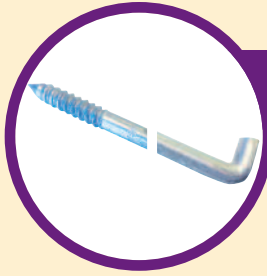
Slide On Detachable Pole Step Mount



Mount Plate

Lag Screw

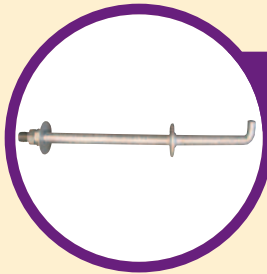
| PART NUMBER | DESCRIPTION                    | BELL NUMBER | CARTON QTY |
|-------------|--------------------------------|-------------|------------|
| 843         | Mount with Lag Screw           | 400162095   | 50         |
| 844         | Detachable Pole Step           | 400270377   | 50         |
| 893         | Slide On Detachable Pole Step  |             | 50         |
| 841         | Elongated Detachable Pole Step | 400270377   | 50         |
| 892         | Slide On Pole Step Mount       |             | 50         |



### Spike Head Pole Step

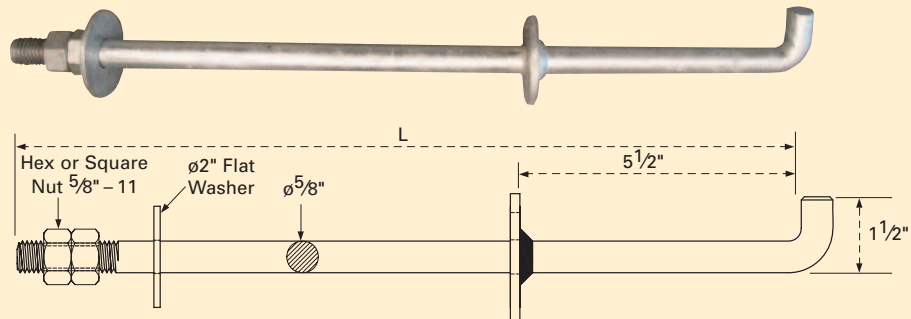
- Used to assist linemen in climbing poles.
- A knurled ring is provided to ensure proper driving depth.
- Formed from AISI 1018 Steel.
- Manufactured with curved upward “fetter” type thread that can be either wrenched or driven.
- Hot dip galvanized to meet ASTM Specification A153.

| PART NUMBER | DESCRIPTION                     | THREAD LENGTH                   | HOOK HEIGHT                     | EXTENSION FROM POLE             | BELL NUMBER | CARTON QTY |
|-------------|---------------------------------|---------------------------------|---------------------------------|---------------------------------|-------------|------------|
| 5800        | 5/8" x 10" Spike Head Pole Step | 2 <sup>5</sup> / <sub>8</sub>   | 1"                              | 5 <sup>1</sup> / <sub>2</sub> " | 400314688   | 50         |
| 8650        | 3/4" x 14" Spike Head Pole Step | 4 <sup>3</sup> / <sub>4</sub> " | 1 <sup>1</sup> / <sub>4</sub> " | 8"                              |             | 30         |



### Fiberglass Pole Step

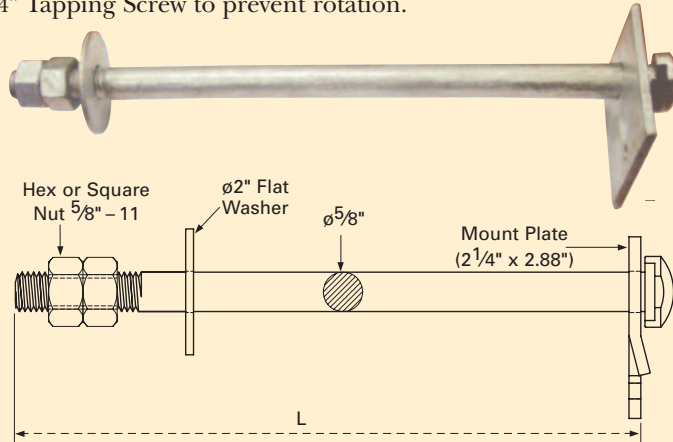
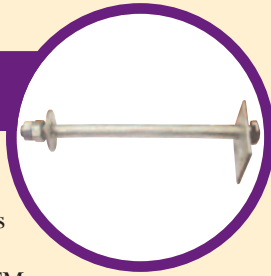
- Used for climbing a fiberglass utility pole.
- Fiberglass Pole Step is used in lieu of the B Pole Step on composite poles.
- Fiberglass Pole Step is formed from high-strength AISI 1018 Steel.
- Slot on integral washer accommodates a 1/4" Tapping Screw to prevent rotation.
- Each Step is equipped with a welded washer to act as a stop, one loose round washer, and two nuts prevent loosening over time.
- Hot dip galvanized to meet ASTM Specification A153.



| PART NUMBER | DESCRIPTION                       | LENGTH (L)                       | CARTON QTY |
|-------------|-----------------------------------|----------------------------------|------------|
| 6512        | Fiberglass Pole Step for 8" Pole  | 15 <sup>1</sup> / <sub>2</sub> " | 25         |
| 6507        | Fiberglass Pole Step for 10" Pole | 17 <sup>1</sup> / <sub>2</sub> " | 25         |

## Composite Utility Pole Mount

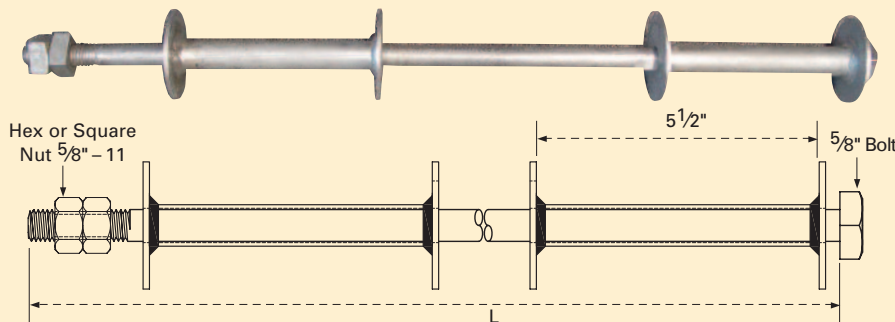
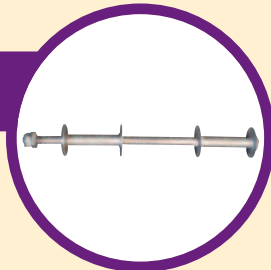
- Used as a mount for Detachable Pole Steps on composite and fiberglass utility poles.
- Composite Utility Pole Mounts are used in lieu of Mount with Lag Screw on composite poles.
- Hole in Mount Plates accommodates 1/4" Tapping Screw to prevent rotation.
- Each Mount is equipped with a stamped plate, special headed bolt, round washer and two nuts to prevent loosening over time.
- Hot dip galvanized to meet ASTM Specification A153.



| PART NUMBER | DESCRIPTION                               | LENGTH (L) | CARTON QTY |
|-------------|---|------------|------------|
| 6513        | Composite Utility Pole Mount for 8" Pole  | 10"        | 25         |
| 6508        | Composite Utility Pole Mount for 10" Pole | 12"        | 25         |

## Working Pole Step

- This step provides linemen with opposing 5 3/4" standoffs for standing in place.
- Slot on integral washers accommodates a 1/4" Tapping Screw to prevent rotation.



| PART NUMBER | DESCRIPTION                    | LENGTH (L) | CARTON QTY |
|-------------|--------------------------------|------------|------------|
| 6514        | Working Pole Step for 8" Pole  | 21 1/2"    | 10         |
| 6506        | Working Pole Step for 10" Pole | 23 1/2"    | 10         |

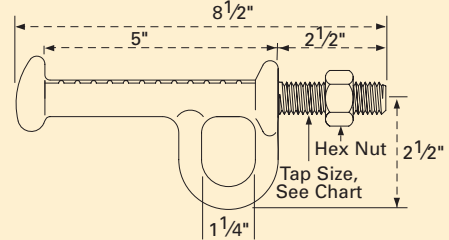
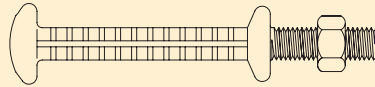




### Tower Pole Step

- Used as a safety step for climbing transmission towers.
- Step has an integral loop for lineman to hook into as a safety precaution.
- Supplied with an ASTM A563-DH Heavy Hex Nut.

- Forged from high strength Grade 8 Steel.
- Hot dip galvanized to meet ASTM Specification A153.



| PART NUMBER | DESCRIPTION                      | CARTON QTY |
|-------------|----------------------------------|------------|
| 12680       | 5/8"-11 X 8 1/2" Tower Pole Step | 25         |
| 12682       | 3/4"-10 X 8 1/2" Tower Pole Step | 25         |

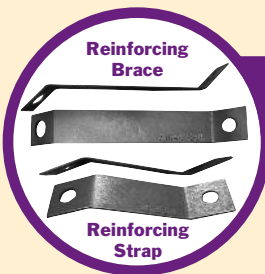


### Tower Pole Step (Step Bolt)

- Used in conjunction with Angle Plate Hooks (Fall Protection) in the construction of lattice towers.
- Constructed from ASTM A394-Type 0 Steel.

- Hot dip galvanized to meet ASTM Specification A153.
- Supplied with an ASTM A563-DH Nut and Hex Locknut.

| PART NUMBER | DESCRIPTION             | CARTON QTY |
|-------------|-------------------------|------------|
| 90025       | 3/4" x 9 3/4" Step Bolt | 25         |



### Reinforcing Strap

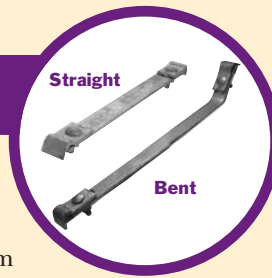
- Used in aerial construction as an added support for three-bolt suspension clamps.

- Stamped from AISI 1018 Steel.
- Mechanically galvanized to meet ASTM Specification B695.

| PART NUMBER | DESCRIPTION              | STOCK (Thickness X Width) | DISTANCE BETWEEN SUSPENSION CLAMP & MOUNTING HOLE | MOUNTING HOLE DIAMETERS | BELL NUMBER | CARTON QTY |
|-------------|--------------------------|---------------------------|---|-------------------------|-------------|------------|
| 102         | C Reinforcing Strap      | .125" x 2"                | 5 7/8"  | 1 1/16" & 25/32"        | 400314803   | 100        |
| 103         | S Reinforcing Strap      | .125" x 1 3/8"            | 5 7/8"  | 1 1/16" & 1 1/16"       | 400314811   | 100        |
| 8003        | D Reinforcing Strap      | .125" x 1 3/8"            | 6 3/4"  | 1 1/16" & 1 1/16"       | 400315016   | 100        |
| 8000        | 2" Reinforcing Brace     | .125" x 2"                | 8 3/4"  | 1 3/16" & 1"            | 900264110   | 25         |
| 8001        | 1 3/8" Reinforcing Brace | .125" x 1 3/8"            | 8 3/4"  | 1 1/16" & 1 1/16"       | 900264128   | 25         |

## Strand Tie Strap

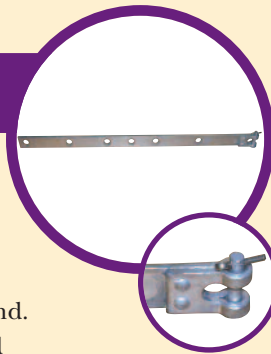
- Used to connect parallel strands at mid-span to prevent cable dancing.
- Comprised of a bar having a strand clamp at each end which is positioned by means of a bolt, lockwasher, and square nut.
- Stock size of bar is  $\frac{3}{16}$ " x  $1\frac{3}{16}$ ".
- The bar for the 14" Tie Strap is straight. The bar for the 20" and 26" has a 45° bend.
- Accommodates strand ranging from  $\frac{1}{4}$ " (6.6M) to  $\frac{7}{16}$ " (16M).
- Hot dip galvanized to meet ASTM Specification A153.



| PART NUMBER | SIZE (Span between Strands) | BELL NUMBER | CARTON QTY |
|-------------|-----------------------------|-------------|------------|
| 8188        | 14" Straight                | 400314829   | 25         |
| 8189        | 20" Bent                    | 400314837   | 25         |
| 8190        | 26" Bent                    | 400314845   | 25         |

## B Corner Wall Strap

- Used for attaching strand to various structures at corners.
- Used in spanning between buildings, or between a pole and building, to bring cable supporting strand in line with the building wall where an offset of 10° or greater does not exist.
- Features a "U" shaped end opening which is closed by a removable clevis pin that is secured by a cotter pin.
- The clevis end of the strap accommodates the sheathed strand of self-supporting cable.
- Mounting holes accommodate  $\frac{1}{2}$ " Bolts.
- Accommodates  $\frac{1}{4}$ " and  $\frac{5}{16}$ " strand.
- All components hot dip galvanized to meet ASTM Specification A153.



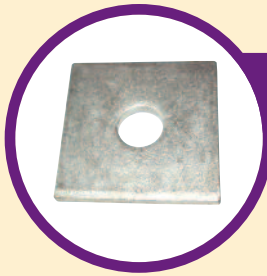
| PART NUMBER | DESCRIPTION         | CARTON QTY |
|-------------|---------------------|------------|
| 1407        | B Corner Wall Strap | 25         |

## Wall Strap

- Used for guying and dead ending strand on walls and buildings.
- The 5065 and 5066 are used to terminate strand at the corners of buildings.
- The 5067 is used to terminate strand at a right angle to the wall.
- The spacing between mounting holes on the 5065 and 5066 is 8". The spacing between mounting holes on the 5067 is  $5\frac{1}{2}$ ".
- Wall Plate Straps are used in lieu of "U" Wall Straps where it is desirable to obtain a more secure anchorage.
- Formed from AISI 1018 Steel.
- Hot dip galvanized to meet ASTM Specification A153.



| PART NUMBER | DESCRIPTION                      | OVERALL LENGTH    | MOUNTING HOLE DIAMETER | BELL NUMBER | CARTON QTY |
|-------------|----------------------------------|-------------------|------------------------|-------------|------------|
| 5065        | $\frac{1}{2}$ " Wall Strap       | 24"               | $\frac{13}{32}$ "      | 400302394   | 10         |
| 5066        | $\frac{5}{8}$ " Wall Strap       | $24\frac{3}{8}$ " | $\frac{9}{16}$ "       | 400302402   | 5          |
| 5067        | "U" Wall Strap                   | 8"                | $\frac{9}{16}$ "       | 400272340   | 10         |
| 901         | Wall Plate Strap Assembly        | 6"                | $\frac{9}{16}$ "       | 400272332   | 10         |
| 5068        | Short $\frac{5}{8}$ " Wall Strap | $16\frac{7}{8}$ " | $\frac{9}{16}$ "       |             | 10         |

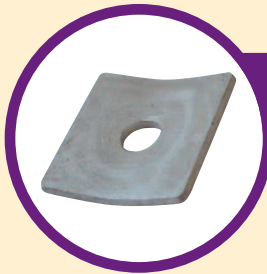


## Square Washer

- Used under the head of bolts and nuts to provide a broader bearing surface and to increase the compression of a tightened nut.
- Stamped from AISI 1018 Steel.
- Hot dip galvanized to meet ASTM Specification A153.

| PART NUMBER | SQUARE SIZE     | BOLT SIZE | THICKNESS | BELL NUMBER | INNER PACK QTY | CARTON QTY |
|-------------|-----------------|-----------|-----------|-------------|----------------|------------|
| 11502       | 2" x 2"         | 1/2"      | 1/8"      |             | 100            | 400        |
| 11501       | 2" x 2"         | 5/8"      | 1/8"      |             | 100            | 400        |
| 11500*      | 2 1/4" x 2 1/4" | 5/8"      | 3/16"     | 400285680   | 100            | 200        |
| 11550*      | 2 1/4" x 2 1/4" | 3/4"      | 3/16"     | 400285698   | 100            | 200        |
| 11551       | 3" x 3"         | 3/4"      | 1/4"      | 400314894   |                | 100        |
| 11600       | 3 1/2" x 3 1/2" | 7/8"      | 3/8"      | 400285706   |                | 50         |
| 11557       | 4" x 4"         | 3/4"      | 3/16"     |             |                | 50         |
| 11553       | 3" x 3"         | 7/8"      | 5/16"     |             |                | 75         |
| 11549       | 4" x 4"         | 7/8"      | 1/4"      |             |                | 50         |
| 11705       | 4" x 4"         | 1"        | 1/2"      | 400285714   |                | 25         |
| 11700       | 6" x 6"         | 1"        | 3/8"      | 400285722   |                | 15         |

\* Please add "SS" to the part number for Stainless Steel (304).



## Curved Washer

- Used under the heads of bolts, nuts, and other threaded products to provide a broader bearing surface and increase the compression grip of the tightened nut.
- Bent at a 4 1/2" radius to fit the contour of poles.
- Stamped from AISI 1018 Steel.
- Hot dip galvanized to meet ASTM Specification A153.

| PART NUMBER | BOLT SIZE | SQUARE SIZE     | THICKNESS | BELL NUMBER | INNER PACK QTY | CARTON QTY |
|-------------|-----------|-----------------|-----------|-------------|----------------|------------|
| 11552       | 5/8"      | 2 1/4" x 2 1/4" | 3/16"     |             | 50             | 200        |
| 11555       | 5/8"      | 2 1/2" x 2 1/2" | 3/16"     |             | 50             | 200        |
| 233         | 5/8"      | 3" x 3"         | 1/4"      |             | 50             | 100        |
| 231         | 3/4"      | 3 1/8" x 3 1/4" | 1/4"      | 400285011   | 50             | 100        |
| 244         | 3/4"      | 3" x 3"         | 1/4"      |             | 50             | 100        |
| 221         | 3/4"      | 4" x 4"         | 1/4"      |             |                | 50         |
| 220         | 3/4"      | 4" x 4"         | 3/8"      |             |                | 25         |
| 238         | 7/8"      | 3 3/8" x 3 1/2" | 3/8"      | 400285037   |                | 50         |
| 228         | 7/8"      | 4" x 4"         | 1/4"      |             |                | 50         |
| 237         | 1"        | 3 3/8" x 3 1/2" | 3/8"      | 400285029   |                | 50         |

## USS Flatwasher

- Used as spacers or supports under screw or bolt heads.
- Hot dip galvanized to meet ASTM Specification A153.



| PART NUMBER | BOLT SIZE | INSIDE DIAMETER | OUTSIDE DIAMETER | THICKNESS | INNER PACK QTY | CARTON QTY |
|-------------|-----------|-----------------|------------------|-----------|----------------|------------|
| 11001       | 3/16"     | 1/4"            | 9/16"            | 3/64"     | 100            | 4,000      |
| 653         | 1/4"      | 5/16"           | 3/4"             | 1/16"     | 100            | 4,000      |
| 11002       | 5/16"     | 3/8"            | 7/8"             | 5/64"     | 100            | 4,000      |
| 249         | 3/8"      | 7/16"           | 1"               | 5/64"     | 100            | 3,200      |
| 249A        | 3/8"      | 7/16"           | 1"               | 5/64"     | 250            | 2,000      |
| 104         | 1/2"      | 9/16"           | 13/8"            | 7/64"     | 50             | 800        |
| 11003       | 5/8"      | 3/4"            | 13/4"            | 9/64"     | 100            | 400        |
| 11003A      | 5/8"      | 3/4"            | 13/4"            | 9/64"     |                | 500        |
| 7017        | 3/4"      | 7/8"            | 2"               | 5/32"     | 100            | 400        |
| 7015        | 7/8"      | 15/16"          | 2 1/4"           | 11/64"    | 50             | 200        |
| 7011        | 1"        | 1 1/16"         | 2 1/2"           | 11/64"    | 50             | 200        |
| 976100      | 1 1/4"    | 1 3/8"          | 3"               | 11/64"    |                | 50         |

## 3" Diameter Washer

- Used when a large bearing surface is required to provide stability.
- All 3" Diameter Washers are 1/4" thick.
- Hot dip galvanized to meet ASTM Specification A153.



| PART NUMBER | BOLT SIZE | CARTON QTY |
|-------------|-----------|------------|
| 12906       | 1/2"      | 100        |
| 12907       | 5/8"      | 100        |
| 12908       | 3/4"      | 100        |
| 12909       | 7/8"      | 100        |
| 12910       | 1"        | 80         |

## Ogee Washer

- Ogee Washers are pressed bell shaped washers with a large bearing surface used to protect bolt heads and nuts from pulling into wood.
- Casted from Malleable Iron.



| PART NUMBER | SIZE (Bolt Size x Height x OD) | CARTON QTY |
|-------------|--------------------------------|------------|
| 12900       | 1/2" x 5/8" x 2"               | 200        |
| 12901       | 5/8" x 3/4" x 2 3/4"           | 90         |
| 12902       | 3/4" x 7/8" x 2 7/8"           | 75         |
| 12903       | 1" x 1 1/8" x 4"               | 30         |

## Casted Washers



- Casted from high-strength Ductile Iron.
- Hot dip galvanized to meet ASTM Specification A153.

### Square Flat

| PART NUMBER | SO. SIZE                        | BOLT SIZE | THICKNESS AT BOSS | CARTON QTY |
|-------------|---------------------------------|-----------|-------------------|------------|
| 2860        | 2 <sup>1</sup> / <sub>4</sub> " | 5/8"      | 9/32"             | 200        |
| 2861        | 2 <sup>1</sup> / <sub>4</sub> " | 3/4"      | 9/32"             | 200        |



### Square Curved

| PART NUMBER | SO. SIZE                        | BOLT SIZE | THICKNESS AT BOSS | CARTON QTY |
|-------------|---------------------------------|-----------|-------------------|------------|
| 2870        | 2 <sup>1</sup> / <sub>4</sub> " | 5/8"      | 1/4"              | 200        |
| 2871        | 3"                              | 5/8"      | 3/8"              | 100        |
| 2872        | 3"                              | 3/4"      | 3/8"              | 100        |



### Round Flat

| PART NUMBER | SO. SIZE | BOLT SIZE | THICKNESS AT BOSS | CARTON QTY |
|-------------|----------|-----------|-------------------|------------|
| 2890        | 3"       | 3/4"      | 7/16"             | 50         |
| 2891        | 4"       | 7/8"      | 1/2"              | 50         |
| 2892        | 4"       | 1"        | 1/2"              | 50         |



## Spring Washer

- Spring Washers are used to keep bolt assemblies on crossarms under tension and correct for shrinkage.
- Spring Washers are formed from Spring Steel.
- Hot dip galvanized to meet ASTM Specification A153.

| PART NUMBER | BOLT DIAMETER | GAUGE                                  | OVERALL LENGTH                   | CARTON QTY |
|-------------|---------------|--|----------------------------------|------------|
| 7012        | 1/2"          | 3/16" x 1"                             | 2 <sup>7</sup> / <sub>16</sub> " | 100        |
| 7013        | 5/8"          | 1/4" x 1 <sup>3</sup> / <sub>4</sub> " | 3 <sup>3</sup> / <sub>4</sub> "  | 25         |
| 7014        | 3/4"          | 1/4" x 1 <sup>3</sup> / <sub>4</sub> " | 3 <sup>3</sup> / <sub>4</sub> "  | 25         |
| 7016        | 7/8"          | 1/4" x 1 <sup>3</sup> / <sub>4</sub> " | 3 <sup>3</sup> / <sub>4</sub> "  | 25         |

## Premium Double Coil Lock Washer

- Used in bolt/nut assemblies on utility pole to compensate for wood shrinkage and thereby preventing nuts from loosening after assembly.
- Mechanically galvanized to meet ASTM Specification B695.
- Beveled ends on Galvanized Double Coil Lock Washer only.



Stainless Steel



Galvanized

| PART NUMBER | SIZE | STOCK SIZE (Cross Section) | CARTON QTY |
|-------------|------|----------------------------|------------|
| 1106        | 3/8" | .156" x .203"              | 250        |
| 1107        | 1/2" | .156" x .250"              | 250        |
| 1108*       | 5/8" | .234" x .312"              | 250        |
| 1109*       | 3/4" | .234" x .312"              | 250        |
| 1120        | 7/8" | .250" x .437"              | 250        |
| 1121        | 1"   | .250" x .437"              | 250        |

\* Add "SS" to the part number for #304 Stainless Steel.

## Economy Double Coil Lock Washer

- Used in bolt/nut assemblies on utility pole to compensate for wood shrinkage and thereby preventing nuts from loosening after assembly.
- Mechanically galvanized to meet ASTM Specification B695.



| PART NUMBER | SIZE | STOCK SIZE (Cross Section) | INNER PACK QTY | CARTON QTY |
|-------------|------|----------------------------|----------------|------------|
| 1186        | 3/8" | .125" x .170"              | 100            | 1,600      |
| 1187        | 1/2" | .156" x .203"              | 100            | 400        |
| 1192        | 5/8" | .188" x .218"              | 100            | 400        |
| 1193        | 3/4" | .218" x .281"              | 100            | 100        |

## Split Lock Washer

- Split Lock Washers are used to resist loosening caused by vibration and corrosion, provide a hardened bearing surface, and create more uniform load distribution.
- Manufactured from AISI 1055 steel.
- Heat treated to a minimum Rockwell Hardness of C35.
- Hot dip galvanized to meet ASTM Specification A153.



| PART NUMBER | SIZE  | INSIDE DIAMETER (max.) | OUTSIDE DIAMETER (max.) | INNER PACK QTY | CARTON QTY |
|-------------|-------|------------------------|-------------------------|----------------|------------|
| 246         | 1/4"  | .262"                  | .489"                   | 100            | 4,000      |
| 241         | 5/16" | .326"                  | .586"                   | 100            | 4,000      |
| 240         | 3/8"  | .390"                  | .683"                   | 100            | 4,000      |
| 6100        | 1/2"  | .518"                  | .873"                   | 100            | 1,600      |
| 6101        | 5/8"  | .650"                  | 1.079"                  | 100            | 800        |
| 6101A       | 5/8"  | .650"                  | 1.079"                  | 200            | 800        |
| 6102        | 3/4"  | .775"                  | 1.271"                  | 100            | 800        |
| 6103        | 7/8"  | .905"                  | 1.464"                  | 100            | 400        |
| 6109        | 1"    | 1.042"                 | 1.661"                  | 100            | 400        |



### Reinforced Wire Holder

- Designed to secure incoming overhead service-entrance wires at the exact point where the weight load is the highest.
- Hot dip galvanized to meet ASTM Specification A153.

| PART NUMBER | SIZE         | CARTON QTY |
|-------------|--------------|------------|
| 9223        | #22 x 2 1/4" | 25         |
| 9221        | #22 x 3"     | 25         |
| 9224        | #22 x 4"     | 25         |



9255

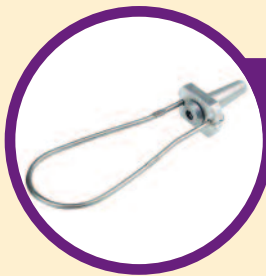


9256

### Wire Holder for Mast

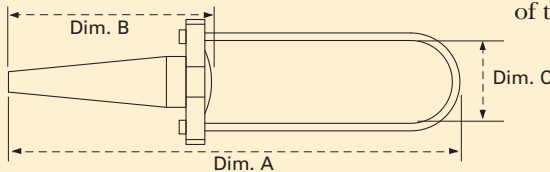
- Used as an attachment point on Service Masts for attaching Wedge Clamps
- Porcelain is wedged in between a "U" shaped strap and is secured with a round head rivet.
- All components are hot dip galvanized to meet ASTM Specification A153.

| PART NUMBER | MAST SIZE       | CARTON QTY |
|-------------|-----------------|------------|
| 9255        | 1 1/4" - 2 1/2" | 20         |
| 9256        | 3" - 4"         | 20         |



### Support Wire Deadend

- Used as a deadend support for Figure 8 Cable.
- The minimum holding strength is 90% of the rated breaking strength of the support wire.



| PART NUMBER | WIRE RANGE      | DIM. A  | DIM. B  | DIM. C | CARTON QTY |
|-------------|-----------------|---------|---------|--------|------------|
| AB505600    | 0.062" - 0.100" | 5 1/2"  | 1 9/16" | 1 5/8" | 50         |
| AB505800    | 0.091" - 0.114" | 5 1/2"  | 1 1/2"  | 1 5/8" | 50         |
| AB506200    | 0.120" - 0.135" | 7 3/4"  | 2 1/2"  | 1 1/2" | 50         |
| AB519900    | 0.140" - 0.215" | 10 1/4" | 4 5/8"  | 1 5/8" | 50         |



### Service Dead-end Bracket

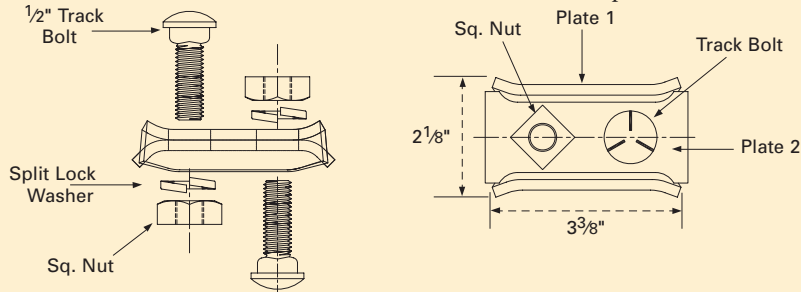
- Used for attaching to Service Masts and accepting the bail of Wedge Clamps.
- Fits on Masts ranging from 1 1/4" to 3".
- Hot dip galvanized to meet ASTM Specification A153.

| PART NUMBER | DESCRIPTION              | CARTON QTY |
|-------------|--------------------------|------------|
| 5063        | Service Dead-end Bracket | 25         |

## Conductor Clamp

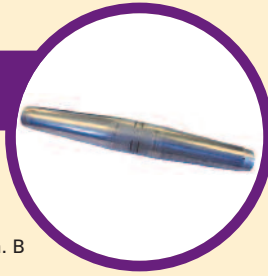


- Used to secure conductor loop deadends.
- Clamp accommodates 0.146" to 0.414" diameter conductors.
- Rounded edges prevent damage to conductors.
- Clamp is stamped from 3/16" Steel.
- Clamps are supplied with 1/2" Track Bolts and accompanying Square Nuts and Split Lock Washers.
- All Components are hot dip galvanized to meet ASTM Specification A153.

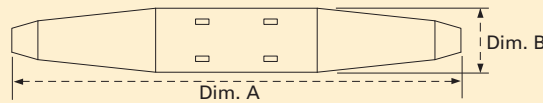


| PART NUMBER | DESCRIPTION     | CARTON QTY |
|-------------|-----------------|------------|
| 17994       | Conductor Clamp | 40         |

## Support Wire Splice

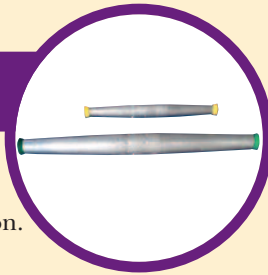


- The minimum holding strength is 90% of the rated breaking strength of the support wire.
- Used to splice the support wire of Figure 8 Drop Cable.

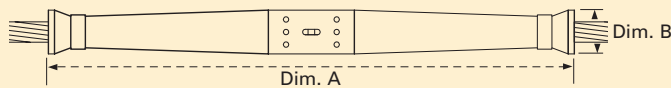


| PART NUMBER | WIRE RANGE      | DIM. A   | DIM. B | CARTON QTY |
|-------------|-----------------|----------|--------|------------|
| AB505700    | 0.062" - 0.100" | 2 15/16" | 3/8"   | 50         |
| AB505900    | 0.091" - 0.114" | 2 15/16" | 7/16"  | 50         |
| AB506300    | 0.120" - 0.135" | 4 1/16"  | 9/16"  | 50         |
| AB503900    | 0.140" - 0.215" | 9"       | 1"     | 50         |

## Aluminum Conductor Splice



- Used to splice Aluminum Conductors in overhead construction.
- Both shell and jaws are manufactured from high-strength Aluminum.
- Color coded ends provide easy identification.
- Funnel ends allow for easy insertion.



| PART NUMBER | CONDUCTOR SIZE |       |                   | APPROXIMATE CONDUCTOR O.D. |               | COLOR CODE | DIM. A | DIM. B | CARTON QTY |
|-------------|----------------|-------|-------------------|----------------------------|---------------|------------|--------|--------|------------|
|             | ACSR           | AAAC  | AAC               | MIN./MAX. IN.              | MIN./MAX. MM  |            |        |        |            |
| AB40200     | 4              | 4     | 4                 | .225 - .220                | 5.58 - 6.35   | Orange     | 9"     | 0.9"   | 20         |
| AB40420     | 4 - 2          | 4 - 2 | 4 - 2             | .220 - .320                | 5.59 - 8.13   | Red/Orange | 12"    | 1.0"   | 20         |
| AB40600     | 1/0            | 1/0   | 1/0               | .355 - .400                | 9.01 - 10.16  | Yellow     | 12"    | 1.1"   | 20         |
| AB40700     | 2/0            | 2/0   | 2/0               | .400 - .407                | 10.16 - 11.94 | Gray       | 18"    | 1.4"   | 20         |
| AB40900     | 4/0            | 4/0   | 4/0               | .505 - .595                | 12.82 - 15.12 | Pink       | 17"    | 1.6"   | 20         |
| AB41000***  | 266.8 (18/1)   | 312.8 | 336.4*            | .603 - .666                | 15.31 - 16.92 | Brown      | 19"    | 1.7"   | 20         |
| AB41100***  | 336.4 (18/1)   | 394.5 | 397.5*<br>336.4** | .659 - .724                | 16.74 - 18.39 | Green      | 20"    | 1.8"   | 20         |
| AB41300***  | 477 (18/1)     | 559.5 | 556.5, 500*       | .780 - .858                | 19.81 - 21.79 | White      | 24"    | 2.1"   | 20         |

\* Includes compact conductor of same size - ASTM-B400. \*\* Round only. \*\*\*For Multi Layer Strand Conductors

