

Pole Bands

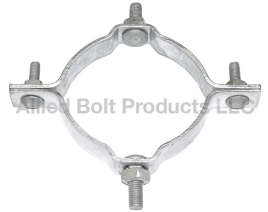
Single and Double Offset Pole Bands

SINGLE OFFSET POLE BAND



PART#	DESCRIPTION	PKG QTY	CTN QTY	CTN WT.
1118	SINGLE OFFSET POLE BAND 4-1/2" TO 5"	20	1	41
1113	SINGLE OFFSET POLE BAND 6" TO 6-3/4"	15	1	43
1117	SINGLE OFFSET POLE BAND 7" TO 7-3/4"	10	1	40
1114	SINGLE OFFSET POLE BAND 8" TO 8-3/4"	10	1	43

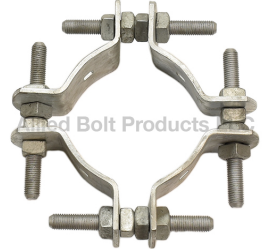
DOUBLE OFFSET POLE BAND



PART#	DESCRIPTION	PKG QTY	CTN QTY	CTN WT.
1111	DOUBLE OFFSET POLE BAND 6" TO 6-3/4"	10	1	32
1116	DOUBLE OFFSET POLE BAND 7" TO 7-3/4"	10	1	52
1112	DOUBLE OFFSET POLE BAND 8" TO 8-3/4"	10	1	55

Adjustable Pole Band

ADJUSTABLE POLE BAND



PART#	DESCRIPTION	PKG QTY	CTN QTY	CTN WT.
3108	ADJUSTABLE POLE BAND 7" TO 9-1/2"	1	1	15
3110	ADJUSTABLE POLE BAND 8" TO 11"	1	1	30
3109	ADJUSTABLE POLE BAND 9-1/2" TO 13-1/2"	1	1	19
3111	ADJUSTABLE POLE BAND 12" TO 16"	2	1	35

Pole Band Link Assembly

POLE BAND LINK ASSEMBLY



PART#	DESCRIPTION	PKG QTY	CTN QTY	CTN WT.
1119	POLE BAND LINK ASSEMBLY	10	1	33

ROLLER



PART#	DESCRIPTION	PKG QTY	CTN QTY	CTN WT.
1122	ROLLER (ONLY)	25	1	16

PAIR OF LINK PLATES



PART#	DESCRIPTION	PKG QTY	CTN QTY	CTN WT.
1123	PAIR OF LINK PLATES (ONLY)	20	1	53

Poleline Bolts



SQUARE HEAD MACHINE BOLT WITH NUT 316SS

5/8" SQUARE HEAD MACHINE BOLT WITH NUT 316SS

PART#	DESCRIPTION	PKG QTY	CTN QTY	CTN WT.
8222SS	5/8" X 10" SQUARE HEAD MACHINE BOLT WITH NUT 316SS	40	1	38
8220SS	5/8" X 8" SQUARE HEAD MACHINE BOLT WITH NUT 316SS	20	1	15
8224SS	5/8" X 12" SQUARE HEAD MACHINE BOLT WITH NUT 316SS	40	1	45
8226SS	5/8" X 14" SQUARE HEAD MACHINE BOLT WITH NUT 316SS	40	1	51
8228SS	5/8" X 16" SQUARE HEAD MACHINE BOLT WITH NUT 316SS	30	1	42



3/4" SQUARE HEAD MACHINE BOLT WITH NUT 316SS

PART#	DESCRIPTION	PKG QTY	CTN QTY	CTN WT.
8240SS	3/4" X 10" SQUARE HEAD MACHINE BOLT WITH NUT 316SS	30	1	45
8242SS	3/4" X 12" SQUARE HEAD MACHINE BOLT WITH NUT 316SS	20	1	34
8244SS	3/4" X 14" SQUARE HEAD MACHINE BOLT WITH NUT 316SS	20	1	39
8246SS	3/4" X 16" SQUARE HEAD MACHINE BOLT WITH NUT 316SS	20	1	40
8250SS	3/4" X 20" SQUARE HEAD MACHINE BOLT WITH NUT 316SS	10	1	28



Square Head Machine Bolt

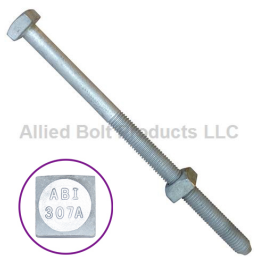
1/4" SQUARE HEAD MACHINE BOLT WITH NUT

PART#	DESCRIPTION	PKG QTY	CTN QTY	CTN WT.
648	1/4" x 1" SQUARE HEAD MACHINE BOLT WITH NUT	100	16	48



3/8" SQUARE HEAD MACHINE BOLT WITH NUT

PART#	DESCRIPTION	PKG QTY	CTN QTY	CTN WT.
647	3/8" X 1" SQUARE HEAD MACHINE BOLT WITH NUT	100	4	28
649	3/8" X 1-1/2" SQUARE HEAD MACHINE BOLT WITH NUT	50	8	34
650	3/8" X 2" SQUARE HEAD MACHINE BOLT WITH NUT	50	4	36
651	3/8" X 2-1/2" SQUARE HEAD MACHINE BOLT WITH NUT	50	4	22
652	3/8" X 3" SQUARE HEAD MACHINE BOLT WITH NUT	50	4	25
65212	3/8" X 3-1/2" SQUARE HEAD MACHINE BOLT WITH NUT	25	4	0
8211	3/8" x 4" SQUARE HEAD MACHINE BOLT WITH NUT	100	1	17
661	3/8" x 4-1/2" SQUARE HEAD MACHINE BOLT WITH NUT	50	4	24
8212	3/8" X 5" SQUARE HEAD MACHINE BOLT WITH NUT	100	1	18
8213	3/8" X 5-1/2" SQUARE HEAD MACHINE BOLT WITH NUT	100	1	18
6660	3/8" X 6" SQUARE HEAD MACHINE BOLT WITH NUT	100	1	26



3/8" SQUARE HEAD MACHINE BOLT WITH NUT (W/ CONE POINT)

PART#	DESCRIPTION	PKG QTY	CTN QTY	CTN WT.
8216	3/8" X 7" SQUARE HEAD MACHINE BOLT WITH NUT	100	1	25
8217	3/8" X 8" SQUARE HEAD MACHINE BOLT WITH NUT	100	1	30

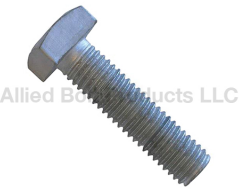


Allied Bolt Products, LLC

1/2" SQUARE HEAD MACHINE BOLT WITH NUT

PART#	DESCRIPTION	PKG QTY	CTN QTY	CTN WT.
236	1/2" X 1" SQUARE HEAD MACHINE BOLT WITH NUT	100	1	13
8202	1/2" X 1-1/4" SQUARE HEAD MACHINE BOLT WITH NUT	100	1	16
8920	1/2" X 1-1/2" SQUARE HEAD MACHINE BOLT WITH NUT	100	1	20
251	1/2" X 1-3/4" SQUARE HEAD MACHINE BOLT WITH NUT	100	1	20
10035	1/2" X 2" SQUARE HEAD MACHINE BOLT WITH NUT	100	1	20
8239	1/2" X 2-1/2" SQUARE HEAD MACHINE BOLT WITH NUT	100	1	23
10036	1/2" X 3" SQUARE HEAD MACHINE BOLT WITH NUT	100	1	25
100365	1/2" X 3-1/2" SQUARE HEAD MACHINE BOLT WITH NUT	100	1	30
10037	1/2" X 4" SQUARE HEAD MACHINE BOLT WITH NUT	100	1	29
8208	1/2" X 4-1/2" SQUARE HEAD MACHINE BOLT WITH NUT	100	1	29
10038	1/2" X 5" SQUARE HEAD MACHINE BOLT WITH NUT	100	1	33
8209	1/2" X 6" SQUARE HEAD MACHINE BOLT WITH NUT	100	1	41

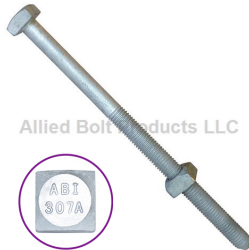
1/2" SQUARE HEAD MACHINE BOLT (NUT NOT INCLUDED)



Allied Bolt Products, LLC

PART#	DESCRIPTION	PKG QTY	CTN QTY	CTN WT.
8203	1/2" X 2 1/2" SQUARE HEAD MACHINE BOLT	100	1	23

1/2" SQUARE HEAD MACHINE BOLT WITH NUT (W/ CONE POINT)



Allied Bolt Products, LLC



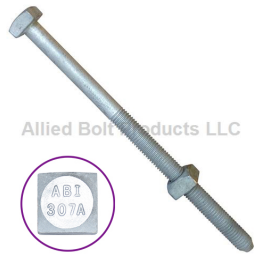
PART#	DESCRIPTION	PKG QTY	CTN QTY	CTN WT.
7930	1/2" x 7" SQUARE HEAD MACHINE BOLT WITH NUT	100	1	47
8110	1/2" X 8" SQUARE HEAD MACHINE BOLT WITH NUT	100	1	48
8922	1/2" X 9" SQUARE HEAD MACHINE BOLT WITH NUT	75	1	42
8111	1/2" X 10" SQUARE HEAD MACHINE BOLT WITH NUT	75	1	47
8112	1/2" X 12" SQUARE HEAD MACHINE BOLT WITH NUT	50	1	36
8210	1/2" X 14" SQUARE HEAD MACHINE BOLT WITH NUT	50	1	40
8924	1/2" X 16" SQUARE HEAD MACHINE BOLT WITH NUT	40	1	32
8925	1/2" X 18" SQUARE HEAD MACHINE BOLT WITH NUT	40	1	32
8927	1/2" X 20" SQUARE HEAD MACHINE BOLT WITH NUT	25	1	24
8932	1/2" X 22" SQUARE HEAD MACHINE BOLT WITH NUT	25	1	30
8934	1/2" X 24" SQUARE HEAD MACHINE BOLT WITH NUT	25	1	28

5/8" SQUARE HEAD MACHINE BOLT WITH NUT



Allied Bolt Products, LLC

PART#	DESCRIPTION	PKG QTY	CTN QTY	CTN WT.
8117	5/8" x 1" SQUARE HEAD MACHINE BOLT WITH NUT	50	1	14
8120	5/8" X 1-1/4" SQUARE HEAD MACHINE BOLT WITH NUT	100	1	12
8121	5/8" X 1-1/2" SQUARE HEAD MACHINE BOLT WITH NUT	100	1	33
8119	5/8" X 1-3/4" SQUARE HEAD MACHINE BOLT WITH NUT	100	1	17
8122	5/8" X 2" SQUARE HEAD MACHINE BOLT WITH NUT	100	1	39
8123	5/8" X 2-1/2" SQUARE HEAD MACHINE BOLT WITH NUT	100	1	41
8124	5/8" X 3" SQUARE HEAD MACHINE BOLT WITH NUT	50	1	22
8118	5/8" X 3-1/2" SQUARE HEAD MACHINE BOLT WITH NUT	50	1	17
8125	5/8" X 4" SQUARE HEAD MACHINE BOLT WITH NUT	100	1	48
8127	5/8" X 4-1/2" SQUARE HEAD MACHINE BOLT WITH NUT	50	1	22
8126	5/8" X 5" SQUARE HEAD MACHINE BOLT WITH NUT	20	1	12
8204	5/8" X 5-1/2" SQUARE HEAD MACHINE BOLT WITH NUT	100	1	61
8214	5/8" X 6" SQUARE HEAD MACHINE BOLT WITH NUT	50	1	43



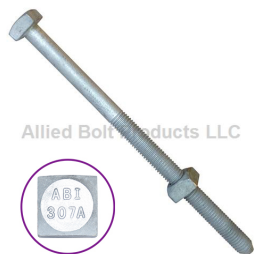
5/8" SQUARE HEAD MACHINE BOLT WITH NUT (W/ CONE POINT)

PART#	DESCRIPTION	PKG QTY	CTN QTY	CTN WT.
8215	5/8" X 7" SQUARE HEAD MACHINE BOLT WITH NUT	50	1	36
8220	5/8" X 8" SQUARE HEAD MACHINE BOLT WITH NUT	50	1	45
8926	5/8" X 9" SQUARE HEAD MACHINE BOLT WITH NUT	50	1	45
8222	5/8" X 10" SQUARE HEAD MACHINE BOLT WITH NUT	40	1	38
8224	5/8" X 12" SQUARE HEAD MACHINE BOLT WITH NUT	40	1	45
8226	5/8" X 14" SQUARE HEAD MACHINE BOLT WITH NUT	40	1	51
8228	5/8" X 16" SQUARE HEAD MACHINE BOLT WITH NUT	30	1	42
8230	5/8" X 18" SQUARE HEAD MACHINE BOLT WITH NUT	30	1	48
8232	5/8" X 20" SQUARE HEAD MACHINE BOLT WITH NUT	20	1	44
8234	5/8" X 22" SQUARE HEAD MACHINE BOLT WITH NUT	20	1	32
8236	5/8" X 24" SQUARE HEAD MACHINE BOLT WITH NUT	20	1	38
10048	5/8" X 26" SQUARE HEAD MACHINE BOLT WITH NUT	20	1	44
8237	5/8" X 28" SQUARE HEAD MACHINE BOLT WITH NUT	20	1	50
8235	5/8" X 30" SQUARE HEAD MACHINE BOLT WITH NUT	15	1	36
8928	5/8" X 32" SQUARE HEAD MACHINE BOLT WITH NUT	15	1	39
8929	5/8" X 34" SQUARE HEAD MACHINE BOLT WITH NUT	15	1	42
8931	5/8" X 36" SQUARE HEAD MACHINE BOLT WITH NUT	15	1	45
8935	5/8" X 40" SQUARE HEAD MACHINE BOLT WITH NUT	5	1	16



3/4" SQUARE HEAD MACHINE BOLT WITH NUT

PART#	DESCRIPTION	PKG QTY	CTN QTY	CTN WT.
8150	3/4" X 2" SQUARE HEAD MACHINE BOLT WITH NUT	100	1	38
8151	3/4" X 3" SQUARE HEAD MACHINE BOLT WITH NUT	100	1	64
8152	3/4" X 4" SQUARE HEAD MACHINE BOLT WITH NUT	100	1	46
8153	3/4" X 6" SQUARE HEAD MACHINE BOLT WITH NUT	50	1	48



3/4" SQUARE HEAD MACHINE BOLT WITH NUT (W/ CONE POINT)

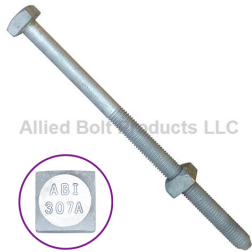
PART#	DESCRIPTION	PKG QTY	CTN QTY	CTN WT.
8154	3/4" X 7" SQUARE HEAD MACHINE BOLT WITH NUT	50	1	53
8238	3/4" X 8" SQUARE HEAD MACHINE BOLT WITH NUT	40	1	48
8240	3/4" X 10" SQUARE HEAD MACHINE BOLT WITH NUT	30	1	35
8242	3/4" X 12" SQUARE HEAD MACHINE BOLT WITH NUT	20	1	34
8244	3/4" X 14" SQUARE HEAD MACHINE BOLT WITH NUT	20	1	39
8246	3/4" X 16" SQUARE HEAD MACHINE BOLT WITH NUT	20	1	44
8248	3/4" X 18" SQUARE HEAD MACHINE BOLT WITH NUT	20	1	47
8250	3/4" X 20" SQUARE HEAD MACHINE BOLT WITH NUT	20	1	56
8252	3/4" X 22" SQUARE HEAD MACHINE BOLT WITH NUT	10	1	32
8254	3/4" X 24" SQUARE HEAD MACHINE BOLT WITH NUT	10	1	36
8255	3/4" X 26" SQUARE HEAD MACHINE BOLT WITH NUT	10	1	31
8259	3/4" X 28" SQUARE HEAD MACHINE BOLT WITH NUT	10	1	35
8930	3/4" X 30" SQUARE HEAD MACHINE BOLT WITH NUT	10	1	40
82623	3/4" X 32" SQUARE HEAD MACHINE BOLT WITH NUT	10	1	40
82624	3/4" X 34" SQUARE HEAD MACHINE BOLT WITH NUT	10	1	40
82625	3/4" X 36" SQUARE HEAD MACHINE BOLT WITH NUT	10	1	42



Allied Bolt Products, LLC

7/8" SQUARE HEAD MACHINE BOLT WITH NUT

PART#	DESCRIPTION	PKG QTY	CTN QTY	CTN WT.
82410	7/8" X 3" SQUARE HEAD MACHINE BOLT WITH NUT	50	1	50

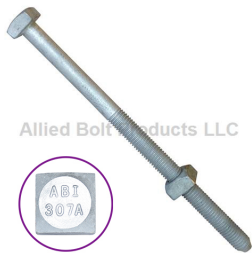


Allied Bolt Products, LLC



7/8" SQUARE HEAD MACHINE BOLT WITH NUT (W/ CONE POINT)

PART#	DESCRIPTION	PKG QTY	CTN QTY	CTN WT.
8970	7/8" X 12" SQUARE HEAD MACHINE BOLT WITH NUT	15	1	35
8971	7/8" X 14" SQUARE HEAD MACHINE BOLT WITH NUT	15	1	40
8972	7/8" X 16" SQUARE HEAD MACHINE BOLT WITH NUT	15	1	45
8256	7/8" X 18" SQUARE HEAD MACHINE BOLT WITH NUT	10	1	34
8257	7/8" X 20" SQUARE HEAD MACHINE BOLT WITH NUT	8	1	29
8973	7/8" X 22" SQUARE HEAD MACHINE BOLT WITH NUT	8	1	30
8606	7/8" X 24" SQUARE HEAD MACHINE BOLT WITH NUT	8	1	32
8607	7/8" X 26" SQUARE HEAD MACHINE BOLT WITH NUT	8	1	34
8608	7/8" X 28" SQUARE HEAD MACHINE BOLT WITH NUT	8	1	39
8609	7/8" X 30" SQUARE HEAD MACHINE BOLT WITH NUT	8	1	40
8610	7/8" X 32" SQUARE HEAD MACHINE BOLT WITH NUT	8	1	42
8611	7/8" X 34" SQUARE HEAD MACHINE BOLT WITH NUT	8	1	44
8612	7/8" X 36" SQUARE HEAD MACHINE BOLT WITH NUT	8	1	46
8620	7/8" X 38" SQUARE HEAD MACHINE BOLT WITH NUT	5	1	34
8622	7/8" X 40" SQUARE HEAD MACHINE BOLT WITH NUT	5	1	38
8624	7/8" X 42" SQUARE HEAD MACHINE BOLT WITH NUT	5	1	39
8626	7/8" X 44" SQUARE HEAD MACHINE BOLT WITH NUT	5	1	41
8628	7/8" X 46" SQUARE HEAD MACHINE BOLT WITH NUT	5	1	43
8629	7/8" X 48" SQUARE HEAD MACHINE BOLT WITH NUT	5	1	45
8630	7/8" X 50" SQUARE HEAD MACHINE BOLT WITH NUT	5	1	47



Allied Bolt Products, LLC



1" SQUARE HEAD MACHINE BOLT WITH NUT (W/ CONE POINT)

PART#	DESCRIPTION	PKG QTY	CTN QTY	CTN WT.
8292	1" X 12" SQUARE HEAD MACHINE BOLT WITH NUT	12	1	32
8293	1" X 14" SQUARE HEAD MACHINE BOLT WITH NUT	12	1	36
8294	1" X 16" SQUARE HEAD MACHINE BOLT WITH NUT	10	1	31
8297	1" X 18" SQUARE HEAD MACHINE BOLT WITH NUT	7	1	28
8295	1" X 20" SQUARE HEAD MACHINE BOLT WITH NUT	7	1	30
8298	1" X 22" SQUARE HEAD MACHINE BOLT WITH NUT	7	1	35
8299	1" X 24" SQUARE HEAD MACHINE BOLT WITH NUT	7	1	41
82995	1" X 26" SQUARE HEAD MACHINE BOLT WITH NUT	6	1	44
82994	1" X 28" SQUARE HEAD MACHINE BOLT WITH NUT	6	1	40
82996	1" X 30" SQUARE HEAD MACHINE BOLT WITH NUT	7	1	49
82999	1" X 32" SQUARE HEAD MACHINE BOLT WITH NUT	7	1	52
83000	1" X 34" SQUARE HEAD MACHINE BOLT WITH NUT	7	1	52
83001	1" X 36" SQUARE HEAD MACHINE BOLT WITH NUT	7	1	52



Allied Bolt Products, LLC

ASTM A325-3 DOUBLE END STUD W/ 2 DH3 HVY HEX NUTS

PART#	DESCRIPTION	PKG QTY	CTN QTY	CTN WT.
59801	3/4" X 16" DOUBLE ENDED STUD ASTM A325-3 W/ 2 DH3 HEAVY HEX NUTS	20	1	32
59802	3/4" X 18" DOUBLE ENDED STUD ASTM A325-3 W/ 2 DH3 HEAVY HEX NUTS	20	1	35
59803	3/4" X 20" DOUBLE ENDED STUD ASTM A325-3 W/ 2 DH3 HEAVY HEX NUTS	20	1	38
59804	3/4" X 22" DOUBLE ENDED STUD ASTM A325-3 W/ 2 DH3 HEAVY HEX NUTS	10	1	41
59805	3/4" X 24" DOUBLE ENDED STUD ASTM A325-3 W/ 2 DH3 HEAVY HEX NUTS	10	1	44

ASTM A325-3 HEAVY HEX STRUCTURAL BOLT W/ DH3 NUT



Allied Bolt Products LLC

PART#	DESCRIPTION	PKG QTY	CTN QTY	CTN WT.
59901	3/4" X 12" HEAVY HEX BOLT A325 TYPE3 W/ DH3 HEAVY HEX NUT	20	1	25
59902	3/4" X 14" HEAVY HEX BOLT A325 TYPE3 W/ DH3 HEAVY HEX NUT	20	1	28
59903	3/4" X 16" HEAVY HEX BOLT A325 TYPE3 W/ DH3 HEAVY HEX NUT	20	1	31
59904	3/4" X 18" HEAVY HEX BOLT A325 TYPE3 W/ DH3 HEAVY HEX NUT	20	1	34
59905	3/4" X 20" HEAVY HEX BOLT A325 TYPE3 W/ DH3 HEAVY HEX NUT	20	1	37
59906	3/4" X 22" HEAVY HEX BOLT A325 TYPE3 W/ DH3 HEAVY HEX NUT	10	1	41
59907	3/4" X 24" HEAVY HEX BOLT A325 TYPE3 W/ DH3 HEAVY HEX NUT	10	1	44
59908	3/4" X 26" HEAVY HEX BOLT A325 TYPE3 W/ DH3 HEAVY HEX NUT	10	1	47
59915	3/4" X 30" HEAVY HEX BOLT A325 TYPE3 W/ DH3 HEAVY HEX NUT	10	1	50
59917	3/4" X 32" HEAVY HEX BOLT A325 TYPE3 W/ DH3 HEAVY HEX NUT	10	1	53

Double Arming Bolt

3/8" DOUBLE ARMING BOLT



Allied Bolt Products LLC

PART#	DESCRIPTION	PKG QTY	CTN QTY	CTN WT.
59750	3/8" X 8" DOUBLE ARMING BOLT	25	1	8

1/2" DOUBLE ARMING BOLT



Allied Bolt Products LLC

PART#	DESCRIPTION	PKG QTY	CTN QTY	CTN WT.
8390	1/2" X 6" DOUBLE ARMING BOLT	50	1	36
8395	1/2" X 8" DOUBLE ARMING BOLT	25	1	16
59752	1/2" X 12" DOUBLE ARMING BOLT	25	1	22
59755	1/2" X 18" DOUBLE ARMING BOLT	25	1	21
59757	1/2" X 22" DOUBLE ARMING BOLT	25	1	28

5/8" DOUBLE ARMING BOLT



Allied Bolt Products LLC

PART#	DESCRIPTION	PKG QTY	CTN QTY	CTN WT.
5950	5/8" X 10" DOUBLE ARMING BOLT	40	1	52
5952	5/8" X 12" DOUBLE ARMING BOLT	40	1	50
5954	5/8" X 14" DOUBLE ARMING BOLT	35	1	58
5956	5/8" X 16" DOUBLE ARMING BOLT	30	1	45
5958	5/8" X 18" DOUBLE ARMING BOLT	30	1	57
5960	5/8" X 20" DOUBLE ARMING BOLT	20	1	40
5962	5/8" X 22" DOUBLE ARMING BOLT	20	1	42
5964	5/8" X 24" DOUBLE ARMING BOLT	20	1	44
5966	5/8" X 26" DOUBLE ARMING BOLT	20	1	46
5968	5/8" X 28" DOUBLE ARMING BOLT	20	1	52
5970	5/8" X 30" DOUBLE ARMING BOLT	15	1	40
5972	5/8" X 32" DOUBLE ARMING BOLT	15	1	42
5974	5/8" X 34" DOUBLE ARMING BOLT	15	1	48
5976	5/8" X 36" DOUBLE ARMING BOLT	15	1	50
6009	5/8" x 40" DOUBLE ARMING BOLT	7	1	26
6705	5/8" x 42" DOUBLE ARMING BOLT	7	1	27
6706	5/8" X 44" DOUBLE ARMING BOLT	7	1	27
6707	5/8" X 46" DOUBLE ARMING BOLT	7	1	30
6105	5/8" X 48" DOUBLE ARMING BOLT	7	1	30
9997966	5/8" X 60" DOUBLE ARMING BOLT	5	1	24



Allied Bolt Products LLC

5/8" DOUBLE ARMING BOLT WITH 2 NUTS

PART#	DESCRIPTION	PKG QTY	CTN QTY	CTN WT.
5950-2	5/8" X 10" DOUBLE ARMING BOLT WITH 2 NUTS	40	1	50
5952-2	5/8" X 12" DOUBLE ARMING BOLT WITH 2 NUTS	40	1	48
5954-2	5/8" X 14" DOUBLE ARMING BOLT WITH 2 NUTS	35	1	44
5956-2	5/8" X 16" DOUBLE ARMING BOLT WITH 2 NUTS	30	1	44
5972-2	5/8" X 32" DOUBLE ARMING BOLT WITH 2 NUTS	15	1	39
5976-2	5/8" X 36" DOUBLE ARMING BOLT WITH 2 NUTS	15	1	46



Allied Bolt Products LLC

5/8" DOUBLE ARMING BOLT WITH 6 NUTS

PART#	DESCRIPTION	PKG QTY	CTN QTY	CTN WT.
5970X6	5/8" X 30" DOUBLE ARMING BOLT WITH 6 SQUARE NUT	15	1	44
5976X6	5/8" X 36" DOUBLE ARMING BOLT WITH 6 SQUARE NUT	15	1	52



Allied Bolt Products LLC

3/4" DOUBLE ARMING BOLT

PART#	DESCRIPTION	PKG QTY	CTN QTY	CTN WT.
59780	3/4" X 6" DOUBLE ARMING BOLT	25	1	24
5973	3/4" X 7" DOUBLE ARMING BOLT	25	1	28
5975	3/4" X 8" DOUBLE ARMING BOLT	25	1	28
5977	3/4" X 10" DOUBLE ARMING BOLT	30	1	40
5978	3/4" X 12" DOUBLE ARMING BOLT	20	1	40
5980	3/4" X 14" DOUBLE ARMING BOLT	20	1	44
5982	3/4" X 16" DOUBLE ARMING BOLT	20	1	48
5984	3/4" X 18" DOUBLE ARMING BOLT	20	1	50
5986	3/4" X 20" DOUBLE ARMING BOLT	20	1	60
5988	3/4" X 22" DOUBLE ARMING BOLT	10	1	32
5990	3/4" X 24" DOUBLE ARMING BOLT	10	1	32
5992	3/4" X 26" DOUBLE ARMING BOLT	10	1	38
5994	3/4" X 28" DOUBLE ARMING BOLT	10	1	37
5996	3/4" X 30" DOUBLE ARMING BOLT	10	1	38
5997	3/4" X 32" DOUBLE ARMING BOLT	10	1	42
5998	3/4" X 34" DOUBLE ARMING BOLT	10	1	43
5999	3/4" X 36" DOUBLE ARMING BOLT	10	1	45
6700	3/4" X 38" DOUBLE ARMING BOLT	5	1	25
6702	3/4" X 40" DOUBLE ARMING BOLT	5	1	25
6104	3/4" X 42" DOUBLE ARMING BOLT	5	1	26
6108	3/4" X 46" DOUBLE ARMING BOLT	5	1	30
9997967	3/4" X 60" DOUBLE ARMING BOLT	5	1	35



Allied Bolt Products LLC

3/4" DOUBLE ARMING BOLT WITH 2 NUTS

PART#	DESCRIPTION	PKG QTY	CTN QTY	CTN WT.
5986-2	3/4" X 20" DOUBLE ARMING BOLT WITH 2 NUTS	20	1	56
5988-2	3/4" X 22" DOUBLE ARMING BOLT WITH 2 NUTS	10	1	32
5990-2	3/4" X 24" DOUBLE ARMING BOLT WITH 2 NUTS	10	1	32
5992-2	3/4" X 26" DOUBLE ARMING BOLT WITH 2 NUTS	10	1	40
5994-2	3/4" X 28" DOUBLE ARMING BOLT WITH 2 NUTS	10	1	36
5997-2	3/4" X 32" DOUBLE ARMING BOLT WITH 2 NUTS	10	1	38
6702-2	3/4" X 40" DOUBLE ARMING BOLT WITH 2 NUTS	5	1	25
6104-2	3/4" X 42" DOUBLE ARMING BOLT WITH 2 NUTS	5	1	26
6108-2	3/4" X 46" DOUBLE ARMING BOLT WITH 2 NUTS	5	1	30



Poleline Power Utility Hardware Catalog

June 26, 2020



Allied Bolt Products LLC

3/4" DOUBLE ARMING BOLT WITH 6 NUTS

PART#	DESCRIPTION	PKG QTY	CTN QTY	CTN WT.
6104X6	3/4" X 42" DOUBLE ARMING BOLT WITH 6 NUTS	5	1	28
5996X6	3/4" X 30" DOUBLE ARMING BOLT WITH 6 NUTS	10	1	38
5999X6	3/4" X 36" DOUBLE ARMING BOLT WITH 6 NUTS	10	1	47



Allied Bolt Products LLC

7/8" DOUBLE ARMING BOLT

PART#	DESCRIPTION	PKG QTY	CTN QTY	CTN WT.
6710	7/8" X 12" DOUBLE ARMING BOLT	15	1	42
6711	7/8" X 14" DOUBLE ARMING BOLT	15	1	46
6712	7/8" X 16" DOUBLE ARMING BOLT	15	1	51
6713	7/8" X 18" DOUBLE ARMING BOLT	10	1	37
6714	7/8" X 20" DOUBLE ARMING BOLT	8	1	30
6715	7/8" X 22" DOUBLE ARMING BOLT	8	1	32
6716	7/8" X 24" DOUBLE ARMING BOLT	7	1	36
6717	7/8" X 26" DOUBLE ARMING BOLT	7	1	40
6718	7/8" X 28" DOUBLE ARMING BOLT	8	1	42
6719	7/8" X 30" DOUBLE ARMING BOLT	8	1	44
6720	7/8" X 32" DOUBLE ARMING BOLT	8	1	46
6721	7/8" X 34" DOUBLE ARMING BOLT	8	1	48
6722	7/8" X 36" DOUBLE ARMING BOLT	8	1	50
6723	7/8" X 38" DOUBLE ARMING BOLT	5	1	34
6724	7/8" X 40" DOUBLE ARMING BOLT	5	1	35
6725	7/8" X 42" DOUBLE ARMING BOLT	5	1	35
6726	7/8" X 44" DOUBLE ARMING BOLT	5	1	36
6727	7/8" X 46" DOUBLE ARMING BOLT	5	1	36
6728	7/8" X 48" DOUBLE ARMING BOLT	5	1	39
6736	7/8" X 50" DOUBLE ARMING BOLT	5	1	40



Allied Bolt Products LLC

7/8" DOUBLE ARMING BOLT WITH 2 NUTS

PART#	DESCRIPTION	PKG QTY	CTN QTY	CTN WT.
6719-2	7/8" x 30" DOUBLE ARMING BOLT WITH 2 NUTS	8	1	44



Allied Bolt Products LLC

1" DOUBLE ARMING BOLT

PART#	DESCRIPTION	PKG QTY	CTN QTY	CTN WT.
6750	1" x 12" DOUBLE ARMING BOLT	12	1	38
6751	1" x 14" DOUBLE ARMING BOLT	12	1	40
6752	1" x 16" DOUBLE ARMING BOLT	10	1	36
6753	1" x 18" DOUBLE ARMING BOLT	7	1	31
6754	1" x 20" DOUBLE ARMING BOLT	7	1	35
6755	1" x 22" DOUBLE ARMING BOLT	10	1	59
6756	1" x 24" DOUBLE ARMING BOLT	7	1	40
6757	1" x 26" DOUBLE ARMING BOLT	6	1	40
6758	1" x 28" DOUBLE ARMING BOLT	6	1	44
6759	1" x 30" DOUBLE ARMING BOLT	7	1	52
6760	1" x 32" DOUBLE ARMING BOLT	7	1	54
6762	1" x 36" DOUBLE ARMING BOLT	7	1	54



Allied Bolt Products LLC

Single and Double Upset Spool Bolts

SINGLE UPSET SPOOL BOLT HDG

PART#	DESCRIPTION	PKG QTY	CTN QTY	CTN WT.
1712	5/8" X 9" SINGLE UPSET SPOOL BOLT HDG	20	1	30
1713	5/8" X 10" SINGLE UPSET SPOOL BOLT HDG	20	1	32
1714	5/8" X 12" SINGLE UPSET SPOOL BOLT HDG	20	1	36
1715	5/8" X 14" SINGLE UPSET SPOOL BOLT HDG	10	1	24



Allied Bolt Products LLC

DOUBLE UPSET SPOOL BOLT HDG

PART#	DESCRIPTION	PKG QTY	CTN QTY	CTN WT.
1716	5/8" X 9" DOUBLE UPSET SPOOL BOLT HDG	20	1	34
1717	5/8" X 10" DOUBLE UPSET SPOOL BOLT HDG	20	1	36
1718	5/8" X 12" DOUBLE UPSET SPOOL BOLT HDG	10	1	19



Allied Bolt Products LLC

A193-B7 Double Arming Bolt w/ A194-2H Heavy Hex Nuts

1/2" ASTM A193-B7 DOUBLE ARMING BOLT w/ A194-2H HEAVY HEX NUTS

PART#	DESCRIPTION	PKG QTY	CTN QTY	CTN WT.
31208	1/2" x 8" ASTM A193-B7 DOUBLE ARMING BOLT w/ A194-2H HEAVY HEX NUTS	25	1	10
31210	1/2" x 10" ASTM A193-B7 DOUBLE ARMING BOLT w/ A194-2H HEAVY HEX NUTS	25	1	12
31212	1/2" x 12" ASTM A193-B7 DOUBLE ARMING BOLT w/ A194-2H HEAVY HEX NUTS	25	1	14
31218	1/2" x 18" ASTM A193-B7 DOUBLE ARMING BOLT w/ A194-2H HEAVY HEX NUT	25	1	23
31220	1/2" x 20" ASTM A193-B7 DOUBLE ARMING BOLT w/ A194-2H HEAVY HEX NUT	25	1	22



Allied Bolt Products LLC

5/8" ASTM A193-B7 DOUBLE ARMING BOLT w/ A194-2H HEAVY HEX NUTS

PART#	DESCRIPTION	PKG QTY	CTN QTY	CTN WT.
35806	5/8" x 6" ASTM A193-B7 DOUBLE ARMING BOLT w/ A194-2H HEAVY HEX NUTS	50	1	25
35808	5/8" x 8" ASTM A193-B7 DOUBLE ARMING BOLT w/ A194-2H HEAVY HEX NUTS	50	1	30
35810	5/8" x 10" ASTM A193-B7 DOUBLE ARMING BOLT w/ A194-2H HEAVY HEX NUTS	40	1	34
35812	5/8" x 12" ASTM A193-B7 DOUBLE ARMING BOLT w/ A194-2H HEAVY HEX NUTS	40	1	36
35814	5/8" x 14" ASTM A193-B7 DOUBLE ARMING BOLT w/ A194-2H HEAVY HEX NUTS	35	1	36
35816	5/8" x 16" ASTM A193-B7 DOUBLE ARMING BOLT w/ A194-2H HEAVY HEX NUTS	30	1	30
35818	5/8" x 18" ASTM A193-B7 DOUBLE ARMING BOLT w/ A194-2H HEAVY HEX NUTS	30	1	30
35820	5/8" x 20" ASTM A193-B7 DOUBLE ARMING BOLT w/ A194-2H HEAVY HEX NUTS	20	1	30
35822	5/8" x 22" ASTM A193-B7 DOUBLE ARMING BOLT w/ A194-2H HEAVY HEX NUTS	20	1	34
35824	5/8" x 24" ASTM A193-B7 DOUBLE ARMING BOLT w/ A194-2H HEAVY HEX NUTS	20	1	38
35826	5/8" x 26" ASTM A193-B7 DOUBLE ARMING BOLT w/ A194-2H HEAVY HEX NUTS	20	1	42
35828	5/8" x 28" ASTM A193-B7 DOUBLE ARMING BOLT w/A194-2H HEAVY HEX NUTS	20	1	48
35830	5/8" x 30" ASTM A193-B7 DOUBLE ARMING BOLT w/A194-2H HEAVY HEX NUTS	15	1	50
35832	5/8" x 32" ASTM A193-B7 DOUBLE ARMING BOLT w/A194-2H HEAVY HEX NUTS	15	1	48
35834	5/8" x 34" ASTM A193-B7 DOUBLE ARMING BOLT w/A194-2H HEAVY HEX NUTS	15	1	50
35836	5/8" x 36" ASTM A193-B7 DOUBLE ARMING BOLT w/A194-2H HEAVY HEX NUTS	15	1	50



Poleline Power Utility Hardware Catalog

June 26, 2020



Allied Bolt Products LLC

3/4" ASTM A193-B7 DOUBLE ARMING BOLT w/ A194-2H HEAVY HEX NUTS

PART#	DESCRIPTION	PKG QTY	CTN QTY	CTN WT.
33406	3/4" x 6" ASTM A193-B7 DOUBLE ARMING BOLT w/ A194-2H HEAVY HEX NUTS	25	1	23
33408	3/4" x 8" ASTM A193-B7 DOUBLE ARMING BOLT w/ A194-2H HEAVY HEX NUTS	25	1	24
33410	3/4" x 10" ASTM A193-B7 DOUBLE ARMING BOLT w/ A194-2H HEAVY HEX NUTS	30	1	36
33412	3/4" x 12" ASTM A193-B7 DOUBLE ARMING BOLT w/ A194-2H HEAVY HEX NUTS	20	1	30
33414	3/4" x 14" ASTM A193-B7 DOUBLE ARMING BOLT w/ A194-2H HEAVY HEX NUTS	20	1	32
33416	3/4" x 16" ASTM A193-B7 DOUBLE ARMING BOLT w/ A194-2H HEAVY HEX NUTS	20	1	34
33418	3/4" x 18" ASTM A193-B7 DOUBLE ARMING BOLT w/ A194-2H HEAVY HEX NUTS	20	1	38
33420	3/4" x 20" ASTM A193-B7 DOUBLE ARMING BOLT w/ A194-2H HEAVY HEX NUTS	20	1	42
33422	3/4" x 22" ASTM A193-B7 DOUBLE ARMING BOLT w/ A194-2H HEAVY HEX NUTS	10	1	23
33424	3/4" x 24" ASTM A193-B7 DOUBLE ARMING BOLT w/ A194-2H HEAVY HEX NUTS	5	1	14
33426	3/4" x 26" ASTM A193-B7 DOUBLE ARMING BOLT w/ A194-2H HEAVY HEX NUTS	5	1	18
33428	3/4" x 28" ASTM A193-B7 DOUBLE ARMING BOLT w/ A194-2H HEAVY HEX NUTS	5	1	20
33430	3/4" x 30" ASTM A193-B7 DOUBLE ARMING BOLT w/ A194-2H HEAVY HEX NUTS	5	1	20
33432	3/4" x 32" ASTM A193-B7 DOUBLE ARMING BOLT w/ A194-2H HEAVY HEX NUTS	5	1	21
33434	3/4" x 34" ASTM A193-B7 DOUBLE ARMING BOLT w/ A194-2H HEAVY HEX NUTS	10	1	43
33436	3/4" x 36" ASTM A193-B7 DOUBLE ARMING BOLT w/ A194-2H HEAVY HEX NUTS	5	1	25
33440	3/4" x 40" ASTM A193-B7 DOUBLE ARMING BOLT w/ A194-2H HEAVY HEX NUTS	5	1	25
33442	3/4" x 42" ASTM A193-B7 DOUBLE ARMING BOLT w/ A194-2H HEAVY HEX NUTS	5	1	27
33444	3/4" x 44" ASTM A193-B7 DOUBLE ARMING BOLT w/ A194-2H HEAVY HEX NUTS	5	1	27
33446	3/4" x 46" ASTM A193-B7 DOUBLE ARMING BOLT w/ A194-2H HEAVY HEX NUTS	5	1	30



Allied Bolt Products LLC

3/4" ASTM A193-B7 DOUBLE ARMING BOLT w/ TWO A194-2H HEAVY HEX NUTS

PART#	DESCRIPTION	PKG QTY	CTN QTY	CTN WT.
33416X2	3/4" x 16" ASTM A193-B7 DOUBLE ARMING BOLT w/TWO A194-2H HEAVY HEX NUTS	5	1	12
33418X2	3/4" x 18" ASTM A193-B7 DOUBLE ARMING BOLT w/ TWO A194-2H HEAVY HEX NUTS	20	1	47
33422X2	3/4" x 22" ASTM A193-B7 DOUBLE ARMING BOLT w/ TWO A194-2H HEAVY HEX NUTS	10	1	29



Allied Bolt Products LLC

7/8" ASTM A193-B7 DOUBLE ARMING BOLT w/ A194-2H HEAVY HEX NUTS

PART#	DESCRIPTION	PKG QTY	CTN QTY	CTN WT.
37808	7/8" x 8" A193-B7 ASTM DOUBLE ARMING BOLT w/A194-2H HEAVY HEX NUTS	10	1	17
37810	7/8" x 10" ASTM A193-B7 DOUBLE ARMING BOLT w/A194-2H HEAVY HEX NUTS	10	1	21
37812	7/8" x 12" ASTM A193-B7 DOUBLE ARMING BOLT w/A194-2H HEAVY HEX NUTS	15	1	36
37814	7/8" x 14" ASTM A193-B7 DOUBLE ARMING BOLT w/A194-2H HEAVY HEX NUTS	15	1	46
37816	7/8" x 16" ASTM A193-B7 DOUBLE ARMING BOLT w/A194-2H HEAVY HEX NUTS	15	1	51
37818	7/8" x 18" ASTM A193-B7 DOUBLE ARMING BOLT w/FOUR A194-2H HEAVY HEX NUTS	10	1	36
37820	7/8" x 20" ASTM A193-B7 DOUBLE ARMING BOLT w/A194-2H HEAVY HEX NUTS	10	1	38
37822	7/8" x 22" ASTM A193-B7 DOUBLE ARMING BOLT w/ A194-2H HEAVY HEX NUTS	10	1	62
37824	7/8" x 24" ASTM A193-B7 DOUBLE ARMING BOLT w/ A194-2H HEAVY HEX NUTS	10	1	48
37826	7/8" x 26" ASTM A193-B7 DOUBLE ARMING BOLT w/ A194-2H HEAVY HEX NUTS	7	1	36
37828	7/8" x 28" ASTM A193-B7 DOUBLE ARMING BOLT w/A194-2H HEAVY HEX NUTS	8	1	40
37830	7/8" x 30" ASTM A193-B7 DOUBLE ARMING BOLT w/ A194-2H HEAVY HEX NUTS	8	1	31
37832	7/8" x 32" ASTM A193-B7 DOUBLE ARMING BOLT w/ A194-2H HEAVY HEX NUTS	8	1	47
37834	7/8" x 34" ASTM A193-B7 DOUBLE ARMING BOLT w/A194-2H HEAVY HEX NUTS	5	1	18
37836	7/8" x 36" ASTM A193-B7 DOUBLE ARMING BOLT w/A194-2H HEAVY HEX NUTS	5	1	19
37838	7/8" x 38" ASTM A193-B7 DOUBLE ARMING BOLT w/ A194-2H HEAVY HEX NUTS	5	1	22
37842	7/8" x 42" ASTM A193-B7 DOUBLE ARMING BOLT w/ A194-2H HEAVY HEX NUTS	5	1	37



Poleline Power Utility Hardware Catalog

June 26, 2020



Allied Bolt Products LLC

7/8" ASTM A193-B7 DOUBLE ARMING BOLT w/TWO A194-2H HEAVY HEX NUTS

PART#	DESCRIPTION	PKG QTY	CTN QTY	CTN WT.
37816X2	7/8" x 16" ASTM A193-B7 DOUBLE ARMING BOLT w/TWO A194-2H HEAVY HEX NUTS	5	1	18
37818X2	7/8" x 18" ASTM A193-B7 DOUBLE ARMING BOLT w/TWO A194-2H HEAVY HEX NUTS	5	1	37



Allied Bolt Products LLC

1" ASTM A193-B7 DOUBLE ARMING BOLT w/ A194-2H HEAVY HEX NUTS

PART#	DESCRIPTION	PKG QTY	CTN QTY	CTN WT.
31010	1" x 10" ASTM A193-B7 DOUBLE ARMING BOLT w/ A194-2H HEAVY HEX NUTS	12	1	26
31012	1" x 12" ASTM A193-B7 DOUBLE ARMING BOLT w/ A194-2H HEAVY HEX NUTS	12	1	30
31014	1" x 14" ASTM A193-B7 DOUBLE ARMING BOLT w/ A194-2H HEAVY HEX NUTS	12	1	34
31016	1" x 16" ASTM A193-B7 DOUBLE ARMING BOLT w/ A194-2H HEAVY HEX NUTS	10	1	40
31018	1" x 18" ASTM A193-B7 DOUBLE ARMING BOLT w/ A194-2H HEAVY HEX NUTS	7	1	22
31020	1" x 20" ASTM A193-B7 DOUBLE ARMING BOLT w/ A194-2H HEAVY HEX NUTS	7	1	40
31022	1" x 22" ASTM A193-B7 DOUBLE ARMING BOLT w/ A194-2H HEAVY HEX NUTS	7	1	37
31024	1" x 24" ASTM A193-B7 DOUBLE ARMING BOLT w/ A194-2H HEAVY HEX NUTS	7	1	30
31026	1" x 26" ASTM A193-B7 DOUBLE ARMING BOLT w/ A194-2H HEAVY HEX NUTS	6	1	33
31030	1" x 30" ASTM A193-B7 DOUBLE ARMING BOLT w/ A194-2H HEAVY HEX NUTS	7	1	52
31036	1" x 36" ASTM A193-B7 DOUBLE ARMING BOLT w/ A194-2H HEAVY HEX NUTS	5	1	43
31034	1" x 34" ASTM A193-B7 DOUBLE ARMING BOLT w/ A194-2H HEAVY HEX NUTS	5	1	40
31038	1" x 38" ASTM A193-B7 DOUBLE ARMING BOLT w/A194-2H HEAVY HEX NUTS	5	1	40
31048	1" x 48" ASTM A193-B7 DOUBLE ARMING BOLT w/ A194-2H HEAVY HEX NUTS	5	1	54
31080	1" x 80" ASTM A193-B7 DOUBLE ARMING BOLT w/ A194-2H HEAVY HEX NUTS	1	1	27
311428	1-1/4" x 28" ASTM A193-B7 DOUBLE ARMING BOLT w/A194-2H HEAVY HEX NUTS	5	1	35
311436	1-1/4" x 36" ASTM A193-B7 DOUBLE ARMING BOLT w/A194-2H HEAVY HEX NUTS	5	1	70
311442	1-1/4" x 42" ASTM A193-B7 DOUBLE ARMING BOLT w/A194-2H HEAVY HEX NUTS	5	1	80



Allied Bolt Products LLC

1" ASTM A193-B7 DOUBLE ARMING BOLT w/TWO A194-2H HEAVY HEX NUTS

PART#	DESCRIPTION	PKG QTY	CTN QTY	CTN WT.
31008X2	1" x 8" ASTM A193-B7 DOUBLE ARMING BOLT w/TWO A194-2H HEAVY HEX NUTS	20	1	40
31028X2	1" x 28" ASTM A193-B7 DOUBLE ARMING BOLT w/ A194-2H HEAVY HEX NUTS	6	1	44
31032X2	1" x 32" ASTM A193-B7 DOUBLE ARMING BOLT w/ TWO A194-2H HEAVY HEX NUTS	5	1	39



Allied Bolt Products LLC

Straight and Angled Guy Bolts

5/8" STRAIGHT GUY BOLT

PART#	DESCRIPTION	PKG QTY	CTN QTY	CTN WT.
5804	5/8" X 8" STRAIGHT GUY BOLT	25	1	31
5805	5/8" X 10" STRAIGHT GUY BOLT	20	1	28
5806	5/8" X 12" STRAIGHT GUY BOLT	10	1	15
5807	5/8" X 14" STRAIGHT GUY BOLT	10	1	17
5808	5/8" X 16" STRAIGHT GUY BOLT	10	1	20
5809	5/8" X 18" STRAIGHT GUY BOLT	20	1	39
5852	5/8" X 20" STRAIGHT GUY BOLT	10	1	21



Allied Bolt Products LLC

3/4" STRAIGHT GUY BOLT

PART#	DESCRIPTION	PKG QTY	CTN QTY	CTN WT.
5857	3/4" X 10" STRAIGHT GUY BOLT	10	1	22
5814	3/4" X 12" STRAIGHT GUY BOLT	10	1	33
5813	3/4" X 14" STRAIGHT GUY BOLT	10	1	39
5812	3/4" X 16" STRAIGHT GUY BOLT	10	1	45
5858	3/4" X 18" STRAIGHT GUY BOLT	10	1	51
5859	3/4" X 20" STRAIGHT GUY BOLT	5	1	19



Allied Bolt Products LLC

5/8" ANGLED GUY BOLT

PART#	DESCRIPTION	PKG QTY	CTN QTY	CTN WT.
5831	5/8" X 8" ANGLED GUY BOLT	20	1	26
5832	5/8" X 10" ANGLED GUY BOLT	20	1	30
5834	5/8" X 12" ANGLED GUY BOLT	10	1	16
5836	5/8" X 14" ANGLED GUY BOLT	10	1	17
5838	5/8" X 16" ANGLED GUY BOLT	10	1	24
5839	5/8" X 18" ANGLED GUY BOLT	10	1	21
5860	5/8" X 20" ANGLED GUY BOLT	5	1	21
5853	5/8" X 22" ANGLED GUY BOLT	5	1	25



Allied Bolt Products LLC

3/4" ANGLED GUY BOLT

PART#	DESCRIPTION	PKG QTY	CTN QTY	CTN WT.
5824	3/4" X 10" ANGLED GUY BOLT	10	1	22
5825	3/4" X 12" ANGLED GUY BOLT	10	1	23
5826	3/4" X 14" ANGLED GUY BOLT	10	1	39
5815	3/4" X 16" ANGLED GUY BOLT	10	1	28
5816	3/4" X 18" ANGLED GUY BOLT	10	1	30
5817	3/4" X 20" ANGLED GUY BOLT	5	1	20
5818	3/4" X 22" ANGLED GUY BOLT	5	1	17



Allied Bolt Products LLC

1" ANGLED GUY BOLT

PART#	DESCRIPTION	PKG QTY	CTN QTY	CTN WT.
5840	1" X 12" ANGLED GUY BOLT	5	1	24
5841	1" X 14" ANGLED GUY BOLT	5	1	26
5842	1" X 16" ANGLED GUY BOLT	5	1	25
5843	1" X 18" ANGLED GUY BOLT	5	1	30



Allied Bolt Products LLC

Oval Eyebolt

5/8" OVAL EYEBOLT

PART#	DESCRIPTION	PKG QTY	CTN QTY	CTN WT.
4101	5/8" X 6" OVAL EYEBOLT	40	1	41
4102	5/8" X 8" OVAL EYEBOLT	50	1	64
4103	5/8" X 10" OVAL EYEBOLT	35	1	52
4104	5/8" X 12" OVAL EYEBOLT	35	1	58
4105	5/8" X 14" OVAL EYEBOLT	20	1	36
4106	5/8" X 16" OVAL EYEBOLT	35	1	51
4107	5/8" X 18" OVAL EYEBOLT	25	1	47
4108	5/8" X 20" OVAL EYEBOLT	25	1	55



3/4" OVAL EYEBOLT

PART#	DESCRIPTION	PKG QTY	CTN QTY	CTN WT.
4112	3/4" X 8" OVAL EYEBOLT	25	1	50
4113	3/4" X 10" OVAL EYEBOLT	25	1	50
4114	3/4" X 12" OVAL EYEBOLT	25	1	52
4115	3/4" X 14" OVAL EYEBOLT	25	1	60
4116	3/4" X 16" OVAL EYEBOLT	25	1	65
4117	3/4" X 18" OVAL EYEBOLT	25	1	70
4119	3/4" X 20" OVAL EYEBOLT	10	1	36



316 STAINLESS STEEL SQUARE HEAD BOLT KIT

5/8" 316 STAINLESS STEEL SQUARE HEAD BOLT KIT

PART#	DESCRIPTION	PKG QTY	CTN QTY	CTN WT.
65810	5/8" X 10" 316 STAINLESS STEEL SQUARE HEAD BOLT KIT	20	1	24
65812	5/8" X 12" 316 STAINLESS STEEL SQUARE HEAD BOLT KIT	20	1	28
65814	5/8" X 14" 316 STAINLESS STEEL SQUARE HEAD BOLT KIT	15	1	28
65816	5/8" X 16" 316 STAINLESS STEEL SQUARE HEAD BOLT KIT	15	1	22



3/4" 316 STAINLESS STEEL SQUARE HEAD BOLT KIT

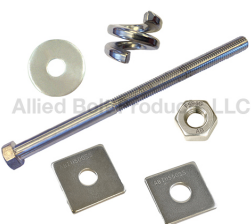
PART#	DESCRIPTION	PKG QTY	CTN QTY	CTN WT.
63410	3/4" X 10" 316 STAINLESS STEEL SQUARE HEAD BOLT KIT	25	1	55
63412	3/4" X 12" 316 STAINLESS STEEL SQUARE HEAD BOLT KIT	50	1	84
63414	3/4" X 14" 316 STAINLESS STEEL SQUARE HEAD BOLT KIT	25	1	47
63416	3/4" X 16" 316 STAINLESS STEEL SQUARE HEAD BOLT KIT	25	1	35



316 STAINLESS STEEL HEX HEAD BOLT KIT

5/8" #316 STAINLESS STEEL HEX BOLT KIT

PART#	DESCRIPTION	PKG QTY	CTN QTY	CTN WT.
22193	5/8" X 10" #316 STAINLESS STEEL HEX BOLT KIT	50	1	46
22194	5/8" X 12" #316 STAINLESS STEEL HEX BOLT KIT	50	1	60
22195	5/8" X 14" #316 STAINLESS STEEL HEX BOLT KIT	25	1	50



3/4" #316 STAINLESS STEEL HEX BOLT KIT

PART#	DESCRIPTION	PKG QTY	CTN QTY	CTN WT.
22208	3/4" X 8" #316 STAINLESS STEEL HEX BOLT KIT	50	1	70
22209	3/4" X 12" #316 STAINLESS STEEL HEX BOLT KIT	50	1	84
22210	3/4" X 14" #316 STAINLESS STEEL HEX BOLT KIT	25	1	47
222106	3/4" X 16" #316 STAINLESS STEEL HEX BOLT KIT	25	1	35



DOUBLE ARMING BOLT A325-1 W/4 A563-DH NUT GALVANIZED

1/2" DOUBLE ARMING BOLT A325-1 W/4 A563-DH NUT GALVANIZED

PART#	DESCRIPTION	PKG QTY	CTN QTY	CTN WT.
7920	1/2" X 8" DOUBLE ARMING BOLT A325-1 W/4 A563-DH NUT GALV	25	1	10
7921	1/2" X 10" DOUBLE ARMING BOLT A325-1 W/4 A563-DH NUT GALV	25	1	12
7922	1/2" X 12" DOUBLE ARMING BOLT A325-1 W/4 A563-DH NUT GALV	25	1	14
7924	1/2" X 16" DOUBLE ARMING BOLT A325-1 W/4 A563-DH NUT GALV	10	1	35
7925	1/2" X 18" DOUBLE ARMING BOLT A325-1 W/4 A563-DH NUT GALV	25	1	23
7926	1/2" X 20" DOUBLE ARMING BOLT A325-1 W/4 A563-DH NUT GALV	25	1	22



Poleline Power Utility Hardware Catalog

June 26, 2020



Allied Bolt Products LLC

5/8" DOUBLE ARMING BOLT A325-1 W/4 A563-DH NUT GALVANIZED

PART#	DESCRIPTION	PKG QTY	CTN QTY	CTN WT.
7927	5/8" X 6" DOUBLE ARMING BOLT A325-1 W/4 A563-DH NUT GALV	50	1	25
7928	5/8" X 8" DOUBLE ARMING BOLT A325-1 W/4 A563-DH NUT GALV	50	1	30
7929	5/8" X 10" DOUBLE ARMING BOLT A325-1 W/4 A563-DH NUT GALV	40	1	34
7931	5/8" X 12" DOUBLE ARMING BOLT A325-1 W/4 A563-DH NUT GALV	40	1	36
7932	5/8" X 14" DOUBLE ARMING BOLT A325-1 W/4 A563-DH NUT GALV	35	1	36
7933	5/8" X 16" DOUBLE ARMING BOLT A325-1 W/4 A563-DH NUT GALV	30	1	30
7934	5/8" X 18" DOUBLE ARMING BOLT A325-1 W/4 A563-DH NUT GALV	30	1	30
7936	5/8" X 22" DOUBLE ARMING BOLT A325-1 W/4 A563-DH NUT GALV	20	1	34
7937	5/8" X 24" DOUBLE ARMING BOLT A325-1 W/4 A563-DH NUT GALV	20	1	38
7938	5/8" X 26" DOUBLE ARMING BOLT A325-1 W/4 A563-DH NUT GALV	20	1	42
7939	5/8" X 28" DOUBLE ARMING BOLT A325-1 W/4 A563-DH NUT GALV	20	1	48
7942	5/8" X 30" DOUBLE ARMING BOLT A325-1 W/4 A563-DH NUT GALV	15	1	50
7943	5/8" X 32" DOUBLE ARMING BOLT A325-1 W/4 A563-DH NUT GALV	15	1	48
7944	5/8" X 34" DOUBLE ARMING BOLT A325-1 W/4 A563-DH NUT GALV	15	1	50
7945	5/8" X 36" DOUBLE ARMING BOLT A325-1 W/4 A563-DH NUT GALV	15	1	50



Allied Bolt Products LLC

3/4" DOUBLE ARMING BOLT A325-1 W/4 A563-DH NUT GALVANIZED

PART#	DESCRIPTION	PKG QTY	CTN QTY	CTN WT.
7946	3/4" X 6" DOUBLE ARMING BOLT A325-1 W/4 A563-DH NUT GALV	25	1	23
7947	3/4" X 8" DOUBLE ARMING BOLT A325-1 W/4 A563-DH NUT GALV	25	1	24
7948	3/4" X 10" DOUBLE ARMING BOLT A325-1 W/4 A563-DH NUT GALV	30	1	36
7949	3/4" X 12" DOUBLE ARMING BOLT A325-1 W/4 A563-DH NUT GALV	20	1	30
7950	3/4" X 14" DOUBLE ARMING BOLT A325-1 W/4 A563-DH NUT GALV	20	1	32
7951	3/4" X 16" DOUBLE ARMING BOLT A325-1 W/4 A563-DH NUT GALV	20	1	34
7952	3/4" X 18" DOUBLE ARMING BOLT A325-1 W/4 A563-DH NUT GALV	20	1	38
8500011	3/4" X 18" DOUBLE ARMING BOLT A325-1 W/ 2 A563-DH NUTS GALV	5	1	9
7953	3/4" X 20" DOUBLE ARMING BOLT A325-1 W/4 A563-DH NUT GALV	5	1	11
7954	3/4" X 22" DOUBLE ARMING BOLT A325-1 W/4 A563-DH NUT GALV	10	1	23
7959	3/4" X 24" DOUBLE ARMING BOLT A325-1 W/4 A563-DH NUT GALV	5	1	14
7958	3/4" X 24" DOUBLE ARMING BOLT A325-1 W/4 A563-DH NUT GALV	0	0	0
8500013	3/4" X 26" DOUBLE ARMING BOLT A325-1 W/4 A563-DH NUT GALV	5	1	18
8500014	3/4" X 28" DOUBLE ARMING BOLT A325-1 W/4 A563-DH NUT GALV	5	1	19
8500015	3/4" X 30" DOUBLE ARMING BOLT A325-1 W/4 A563-DH NUT GALV	5	1	20
8500016	3/4" X 32" DOUBLE ARMING BOLT A325-1 W/4 A563-DH NUT GALV	5	1	21
8500018	3/4" X 36" DOUBLE ARMING BOLT A325-1 W/4 A563-DH NUT GALV	5	1	23



Allied Bolt Products LLC

7/8" DOUBLE ARMING BOLT A325-1 W/4 A563-DH NUT GALVANIZED

PART#	DESCRIPTION	PKG QTY	CTN QTY	CTN WT.
7966	7/8" X 8" DOUBLE ARMING BOLT A325-1 W/4 A563-DH NUT GALV	10	1	17
7967	7/8" X 10" DOUBLE ARMING BOLT A325-1 W/4 A563-DH NUT GALV	10	1	21
7968	7/8" X 12" DOUBLE ARMING BOLT A325-1 W/4 A563-DH NUT GALV	15	1	36
7923	7/8" X 14" DOUBLE ARMING BOLT A325-1 W/4 A563-DH NUT GALV	15	1	40
7971	7/8" X 18" DOUBLE ARMING BOLT A325-1 W/4 A563-DH NUT GALV	10	1	36
7972	7/8" X 20" DOUBLE ARMING BOLT A325-1 W/4 A563-DH NUT GALV	10	1	38
7973	7/8" X 22" DOUBLE ARMING BOLT A325-1 W/4 A563-DH NUT GALV	10	1	44
7974	7/8" X 24" DOUBLE ARMING BOLT A325-1 W/4 A563-DH NUT GALV	10	1	48
8400012	7/8" X 26" DOUBLE ARMING BOLT A325-1 W/4 A563-DH NUT GALV	7	1	35
8400013	7/8" X 28" DOUBLE ARMING BOLT A325-1 W/4 A563-DH NUT GALV	8	1	40
8400014	7/8" X 30" DOUBLE ARMING BOLT A325-1 W/4 A563-DH NUT GALV	8	1	45
8400015	7/8" X 32" DOUBLE ARMING BOLT A325-1 W/4 A563-DH NUT GALV	8	1	47
7979	7/8" X 34" DOUBLE ARMING BOLT A325-1 W/4 A563-DH NUT GALV	5	1	18
7980	7/8" X 36" DOUBLE ARMING BOLT A325-1 W/4 A563-DH NUT GALV	5	1	19



Allied Bolt Products LLC

1" DOUBLE ARMING BOLT A325-1 W/4 A563-DH NUT GALVANIZED

PART#	DESCRIPTION	PKG QTY	CTN QTY	CTN WT.
7981	1" X 10" DOUBLE ARMING BOLT A325-1 W/4 A563-DH NUT GALV	12	1	26
7982	1" X 12" DOUBLE ARMING BOLT A325-1 W/4 A563-DH NUT GALV	12	1	30
7983	1" X 14" DOUBLE ARMING BOLT A325-1 W/4 A563-DH NUT GALV	12	1	34
7984	1" X 16" DOUBLE ARMING BOLT A325-1 W/4 A563-DH NUT GALV	10	1	40
7985	1" X 18" DOUBLE ARMING BOLT A325-1 W/4 A563-DH NUT GALV	7	1	22
7986	1" X 20" DOUBLE ARMING BOLT A325-1 W/4 A563-DH NUT GALV	7	1	34
7987	1" X 22" DOUBLE ARMING BOLT A325-1 W/4 A563-DH NUT GALV	7	1	37
7988	1" X 24" DOUBLE ARMING BOLT A325-1 W/4 A563-DH NUT GALV	7	1	30
7989	1" X 26" DOUBLE ARMING BOLT A325-1 W/4 A563-DH NUT GALV	6	1	33
7991	1" X 30" DOUBLE ARMING BOLT A325-1 W/4 A563-DH NUT GALV	7	1	52
7993	1" X 34" DOUBLE ARMING BOLT A325-1 W/4 A563-DH NUT GALV	5	1	40
8600010	1" X 36" DOUBLE ARMING BOLT A325-1 W/4 A563-DH NUT GALV	5	1	43
8600013	1" X 48" DOUBLE ARMING BOLT A325-1 W/4 A563-DH NUT GALV	5	1	54



Allied Bolt Products LLC

1-1/4" DOUBLE ARMING BOLT A325-1 W/4 A563-DH NUT GALVANIZED

PART#	DESCRIPTION	PKG QTY	CTN QTY	CTN WT.
8610013	1-1/4" X 42" DOUBLE ARMING BOLT A325 W/4 A563-DH NUT GALV	5	1	80

Support Braces

V Crossarm Brace

V CROSSARM BRACE



Allied Bolt Products LLC

PART#	DESCRIPTION	PKG QTY	CTN QTY	CTN WT.
8400	37" V CROSSARM BRACE 12" DROP 1-1/2" X 1-1/2" X 3/16" STEEL	1	1	7
8405	42" V CROSSARM BRACE 12" DROP 1-1/2" X 1-1/2" X 3/16" STEEL	1	1	8
8410	48" V CROSSARM BRACE 18" DROP 1-1/2" X 1-1/2" X 3/16" STEEL	1	1	10
8415	60" V CROSSARM BRACE 18" DROP 1-1/2" X 1-1/2" X 3/16" STEEL	1	1	12
8420	60" V CROSSARM BRACE 18" DROP 1-3/4" X 1-3/4" X 3/16" STEEL	1	1	14
8430	66" V CROSSARM BRACE 20" DROP 1-3/4" X 1-3/4" X 3/16" STEEL	1	1	14
8435	72" V CROSSARM BRACE 22" DROP 1-3/4" X 1-3/4" X 3/16" STEEL	1	1	14
8440	88" V CROSSARM BRACE 27" DROP 1-3/4" X 1-3/4" X 3/16" STEEL	1	1	16

Alley Arm Brace

ALLEY ARM BRACE/ ANGLE STEEL



Allied Bolt Products LLC

PART#	DESCRIPTION	PKG QTY	CTN QTY	CTN WT.
900031	5' ALLEY ARM BRACE 1-3/4" X 1-3/4" X 3/16" ANGLE STEEL	1	1	13
900032	7' ALLEY ARM BRACE 1-3/4" X 1-3/4" X 3/16" ANGLE STEEL	1	1	18
900033	10' ALLEY ARM BRACE 2" X 2" X 3/16" ANGLE STEEL	1	1	36

Crossarm Brace

CROSSARM BRACE



Allied Bolt Products LLC

PART#	DESCRIPTION	PKG QTY	CTN QTY	CTN WT.
5096	20" CROSSARM BRACE	20	1	46
5092	26" CROSSARM BRACE	20	1	38
5091	28" CROSSARM BRACE	20	1	49
5070	30" CROSSARM BRACE	20	1	43
5093	32" CROSSARM BRACE	20	1	46

Crossarm Framing Brace

CROSSARM BRACE



PART#	DESCRIPTION	PKG QTY	CTN QTY	CTN WT.
8470	18-1/2" CROSSARM FRAMING BRACE	10	1	24
8471	41" CROSSARM FRAMING BRACE	10	1	24

Guard Arm Brace

Guard Arm Brace



PART#	DESCRIPTION	PKG QTY	CTN QTY	CTN WT.
5057	GUARD ARM BRACE	25	1	39

B Pole Brace



PART#	DESCRIPTION	PKG QTY	CTN QTY	CTN WT.
2090	B POLE BRACE	2	1	16

METER BOX HANGER

Support Braces



PART#	DESCRIPTION	PKG QTY	CTN QTY	CTN WT.
2956	METER BOX HANGER	8	1	13

Extension Brackets

CONDUIT RISER BRACKET

CONDUIT RISER BRACKET



PART#	DESCRIPTION	PKG QTY	CTN QTY	CTN WT.
9017	CONDUIT RISER BRACKET	4	1	8

Cable Extension Bracket

CABLE EXTENSION BRACKET



PART#	DESCRIPTION	PKG QTY	CTN QTY	CTN WT.
1188	17-1/2" TO 26" CABLE EXTENSION BRACKET	1	1	30
1189	26-1/2" TO 44-1/2" CABLE EXTENSION BRACKET	1	1	60



Wire Formed Hardware



Allied Bolt Products LLC

GUY WIRE DEADEND BEZINAL COATED

Guy Wire Deadend Bezinol™ Coated

PART#	DESCRIPTION	PKG QTY	CTN QTY	CTN WT.
AB910040	1/4" Guy Wire Deadend Bezinol™ Coated - Yellow	50	1	36
AB910060	5/16" Guy Wire Deadend Bezinol™ Coated - Black	50	1	40
AB910070	3/8" Guy Wire Deadend Bezinol™ Coated - Orange	20	1	23

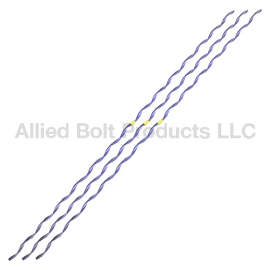


Allied Bolt Products LLC

Guy Wire Deadend

Guy Wire Deadend

PART#	DESCRIPTION	PKG QTY	CTN QTY	CTN WT.
AB110020	3/16" Guy Deadend Grip Steel Class B Coated - Red	100	1	30
AB110040	1/4" Guy Deadend Grip Steel Class B Coated - Yellow	50	1	36
AB110060	5/16" Guy Deadend Grip Steel Class B Coated - Black	50	1	40
AB110070	3/8" Guy Deadend Grip Steel Class B Coated - Orange	25	1	28
AB110080	7/16" Guy Deadend Grip Steel Class B Coated - Green	20	1	31
AB110090	1/2" Guy Deadend Grip Steel Class B Coated - Blue	10	1	29



Allied Bolt Products LLC

Guy Wire Splice

Guy Wire Splice

PART#	DESCRIPTION	PKG QTY	CTN QTY	CTN WT.
ABS1104	1/4" Strand Splice 35" Long Class B	50	1	27
ABS1106	5/16" Strand Splice 42" Long Class B	50	1	40
ABS1107	3/8" Strand Splice 50" Long Class B	25	1	32
ABS1108	7/16" Strand Splice 50" Long Class B	20	1	30



Allied Bolt Products LLC

Cable Pulling Grip

CABLE PULLING GRIP

PART#	DESCRIPTION	PKG QTY	CTN QTY	CTN WT.
2803	0.64-0.88 CABLE PULLING GRIP	20	1	12



Allied Bolt Products LLC

SPLIT LACE UP PULLING GRIP

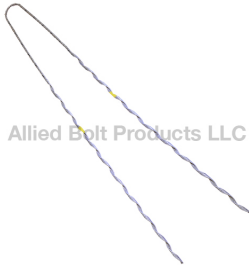
PART#	DESCRIPTION	PKG QTY	CTN QTY	CTN WT.
2801	1.0-1.5 SPLIT LACE UP PULLING GRIP	20	1	12
2800	1.5-2.0 SPLIT LACE UP PULLING GRIP	20	1	14



Allied Bolt Products LLC

SUPPORT GRIP

PART#	DESCRIPTION	PKG QTY	CTN QTY	CTN WT.
2800-11	0.63-0.75 SUPPORT GRIP	20	1	5
2800-13	0.75-1.00 SUPPORT GRIP	20	1	7
2800-15	1.00-1.25 SUPPORT GRIP	20	1	9



Allied Bolt Products LLC

FALSE DEADEND

FALSE DEAD-ENDS

PART#	DESCRIPTION	PKG QTY	CTN QTY	CTN WT.
ABFDE1104	1/4" FALSE DEADEND 36" YELLOW	25	1	18
ABFDE1106	5/16" FALSE DEADEND 39" BLACK	25	1	25
ABFDE1107	3/8" FALSE DEADEND 42" BROWN	25	1	32

ADSS FIBER CABLE HARDWARE



Allied Bolt Products LLC

Aluminum Trunnion Support for ADSS Fiber Cable

ALUMINUM TRUNNION SUPPORT FOR ADSS FIBER CABLE

PART#	DESCRIPTION	PKG QTY	CTN QTY	CTN WT.
9700-1	TRUNNION CLAMP FOR ADSS FIBER .356"-.459" BLACK	10	1	24
9700-3	TRUNNION CLAMP FOR ADSS FIBER .459"-.555" ORANGE	10	1	24
9700-5	TRUNNION CLAMP FOR ADSS FIBER .551"-.649" BLUE	10	1	24
9700-7	TRUNNION CLAMP FOR ADSS FIBER .649"-.748" WHITE	10	1	24

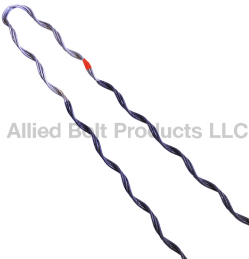


Allied Bolt Products LLC

J SUSPENSION BRACKET FOR ADSS FIBER OPTIC CABLE

J SUSPENSION BRACKET FOR ADSS FIBER OPTIC CABLE

PART#	DESCRIPTION	PKG QTY	CTN QTY	CTN WT.
9701-1	5-10MM J BRACKET FOR ADSS FIBER OPTIC CABLE	50	1	20
9701-2	10-15MM J BRACKET FOR ADSS FIBER OPTIC CABLE	50	1	20
9701-3	15-20MM J BRACKET FOR ADSS FIBER OPTIC CABLE	50	1	20



Allied Bolt Products LLC

ALUMINUM DEADENDS FOR FIBER CABLE

Aluminum Deadends for Fiber Cable

PART#	DESCRIPTION	PKG QTY	CTN QTY	CTN WT.
AB85001	Aluminum Deadends for Fiber Cable - RED 0.3740.414	50	1	28
AB85002	Aluminum Deadends for Fiber Cable - ORANGE 0.415-- 0.459	40	1	31
AB85003	Aluminum Deadends for Fiber Cable - GREEN 0.4600.505	25	1	33
AB85004	Aluminum Deadends for Fiber Cable - PINK 0.5060.557	25	1	37
AB85005	Aluminum Deadends for Fiber Cable - YELLOW 0.5580.615	15	1	42
AB85006	Aluminum Deadends for Fiber Cable - BLUE 0.6160.680	15	1	45
AB85007	Aluminum Deadends for Fiber Cable - BROWN 0.6810.750	15	1	49

Clamps and Markers For Guying



Allied Bolt Products LLC

Wire Rope Thimble

WIRE ROPE THIMBLE

PART#	DESCRIPTION	PKG QTY	CTN QTY	CTN WT.
1060	1/4" WIRE ROPE THIMBLE	100	1	7
1061	5/16" WIRE ROPE THIMBLE	100	1	4
1062	3/8" WIRE ROPE THIMBLE	100	1	9
1063	1/2" WIRE ROPE THIMBLE	50	1	19
1064	5/8" WIRE ROPE THIMBLE	50	1	31
1065	3/4" WIRE ROPE THIMBLE	50	1	45

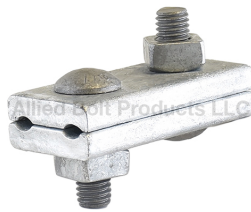


Allied Bolt Products LLC

Guy Clamp

ONE BOLT GUY CLAMP

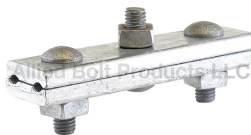
PART#	DESCRIPTION	PKG QTY	CTN QTY	CTN WT.
5055	1/2" ONE BOLT GUY CLAMP 1-7/16" X 1-9/16" PLATES	50	1	32



Allied Bolt Products LLC

TWO BOLT GUY CLAMP

PART#	DESCRIPTION	PKG QTY	CTN QTY	CTN WT.
5058	1/2" TWO BOLT GUY CLAMP 3-3/8" X 1-9/16" PLATES	50	1	69



Allied Bolt Products LLC

THREE BOLT GUY CLAMP

PART#	DESCRIPTION	PKG QTY	CTN QTY	CTN WT.
5059	1/2" THREE BOLT GUY CLAMP 5-7/8" X 1-9/16" PLATES	25	1	42
5056	5/8" THREE BOLT GUY CLAMP 6" X 1-21/32" PLATES	25	1	55

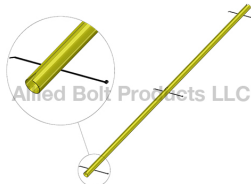


Allied Bolt Products LLC

Malleable Guy Clamp

MALLEABLE GUY CLIP

PART#	DESCRIPTION	PKG QTY	CTN QTY	CTN WT.
885	1/4" MALLEABLE GUY CLIP	100	1	14
886	5/16" MALLEABLE GUY CLIP	100	1	13
887	3/8" MALLEABLE GUY CLIP	50	1	15
888	1/2" MALLEABLE GUY CLIP	50	1	24



Allied Bolt Products LLC

Guy Markers

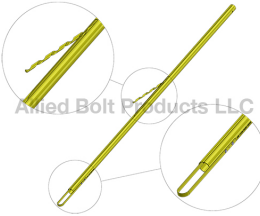
FULL ROUND GUY MARKER W/ CABLE TIES

PART#	DESCRIPTION	PKG QTY	CTN QTY	CTN WT.
11402	1-1/4" X 8' FULL ROUND YELLOW GUY MARKER WITH CABLE TIE	25	1	32
11404	1-1/2" X 8' FULL ROUND YELLOW GUY MARKER WITH CABLE TIE	25	1	33
11406	2" X 8' FULL ROUND YELLOW GUY MARKER WITH CABLE TIE	15	1	49



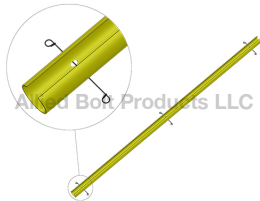
"B" PROFILE GUY MARKER W/ HELICAL PIG TAIL

PART#	DESCRIPTION	PKG QTY	CTN QTY	CTN WT.
11401	1-1/4" X 8" "B" PROFILE GUY MARKER W/ HELICAL PIG TAIL	12	1	10
11415	1-1/2" X 8" "B" PROFILE GUY MARKER W/ HELICAL PIG TAIL	12	1	17
11417	2" X 8" "B" PROFILE GUY MARKER W/ HELICAL PIG TAIL	25	1	49



"B" PROFILE W/ HELICAL PIG TAIL AND ANCHOR ROD LOOP

PART#	DESCRIPTION	PKG QTY	CTN QTY	CTN WT.
11414	1-1/4" X 8" "B" PROFILE W/ HELICAL PIG TAIL AND ANCHOR ROD LOOP	25	1	32
11418	2" X 8" "B" PROFILE W/ HELICAL PIG TAIL AND ANCHOR ROD LOOP	25	1	49



TWO THIRD ROUND YELLOW GUY MARKER W/ 3 WIRE TIES

PART#	DESCRIPTION	PKG QTY	CTN QTY	CTN WT.
11437	2-1/2" X 7' TWO THIRD ROUND YELLOW GUY MARKER W/ 3 WIRE TIES	15	1	18
12011	2" X 8' TWO THIRD ROUND YELLOW GUY MARKER W/ 3 WIRE TIES	15	1	19

Conductor Clamp



Conductor Clamp

PART#	DESCRIPTION	PKG QTY	CTN QTY	CTN WT.
17994	CONDUCTOR CLAMP	40	1	41

Strand Dead-End



EHS STRAND DEADEND

PART#	DESCRIPTION	PKG QTY	CTN QTY	CTN WT.
AB520000	1/4" EHS STRAND DEAD-END YELLOW	25	1	14
AB520100	5/16" EHS STRAND DEAD-END BLACK	25	1	22
AB520200	3/8" EHS STRAND DEAD-END ORANGE	25	1	36
AB520300	7/16" EHS STRAND DEAD-END GREEN	25	1	50
AB520400	1/2" EHS STRAND DEADEND BLUE	25	1	54



ALL GRADE STRAND DEADEND

PART#	DESCRIPTION	PKG QTY	CTN QTY	CTN WT.
AB509900	3/16 ALL GRADE STRAND DEADEND ORANGE	50	1	22
AB510000	1/4" ALL GRADE STRAND DEADEND YELLOW	50	1	19
AB510100	5/16" ALL GRADE STRAND DEADEND BLACK	50	1	34
AB510200	3/8" ALL GRADE STRAND DEADEND ORANGE	50	1	53

Allied Bolt Products LLC



LONG BAIL EHS STRAND DEADEND

PART#	DESCRIPTION	PKG QTY	CTN QTY	CTN WT.
AB520000L	1/4" LONG BAIL EHS STRAND DEADEND YELLOW (OVERALL LENGTH 13.625")	25	1	17
AB520100L	5/16" LONG BAIL EHS STRAND DEADEND BLACK (OVERALL LENGTH 15.67")	25	1	24
AB520200L	3/8" LONG BAIL EHS STRAND DEADEND ORANGE (OVERALL LENGTH 17.36")	25	1	40
AB520300L	7/16" LONG BAIL EHS STRAND DEADEND GREEN (OVERALL LENGTH 18.47")	25	1	50

Allied Bolt Products LLC



LONG BAIL ALL GRADE STRAND DEADEND

PART#	DESCRIPTION	PKG QTY	CTN QTY	CTN WT.
AB510000L	1/4" LONG BAIL ALL GRADE STRAND DEADEND YELLOW (OVERALL LENGTH 12.75")	50	1	23
AB510100L	5/16" LONG BAIL ALL GRADE STRAND DEADEND BLACK (OVERALL LENGTH 13.42")	50	1	40
AB510200L	3/8" LONG BAIL ALL GRADE STRAND DEADEND ORANGE (OVERALL LENGTH 17.17")	50	1	56

Allied Bolt Products LLC



EXTRA LONG BAIL ALL GRADE STRAND DEADEND

PART#	DESCRIPTION	PKG QTY	CTN QTY	CTN WT.
AB510100LL	5/16" EXTRA LONG BAIL ALL GRADE STRAND DEADEND BLACK (OVERALL LENGTH 24")	50	1	50
AB510200LL	3/8" EXTRA LONG BAIL ALL GRADE STRAND DEADEND ORANGE (OVERALL LENGTH 24")	50	1	56

Allied Bolt Products LLC

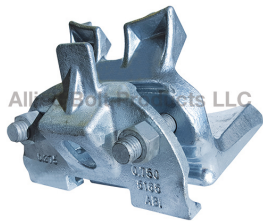


Dead-End Clevis/Extension Link

PART#	DESCRIPTION	PKG QTY	CTN QTY	CTN WT.
5090	5/8" x 24" DEAD-END CLEVIS	10	1	32

Clamps/Splices for ACSR (Aluminum Conductor Steel Reinforced) Wire

Allied Bolt Products LLC

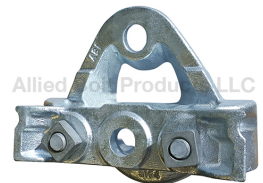


Aerial Messenger Cable Clamp

Aerial Messenger Cable Clamp

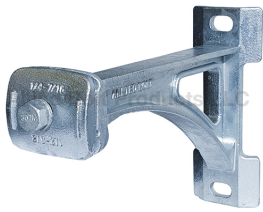
PART#	DESCRIPTION	PKG QTY	CTN QTY	CTN WT.
5165	AERIAL MESSENGER CABLE CLAMP	4	1	40

Allied Bolt Products LLC



Aerial Cable Heavy Duty Messenger Clamp

PART#	DESCRIPTION	PKG QTY	CTN QTY	CTN WT.
5164	AERIAL CABLE HEAVY DUTY MESSENGER CLAMP	5	1	30



Messenger Cable Extension

MESSENGER CABLE EXTENSION

PART#	DESCRIPTION	PKG QTY	CTN QTY	CTN WT.
3119	12" MESSENGER CABLE EXTENSION	2	1	23
2998	24" MESSENGER CABLE EXTENSION	2	1	38



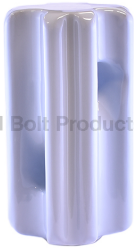
Allied Bolt Products LLC

Aluminum Conductor Splice

ALUMINUM CONDUCTOR SPLICE

PART#	DESCRIPTION	PKG QTY	CTN QTY	CTN WT.
AB40200	#4 ALUMINUM CONDUCTOR SPLICE ORANGE	20	1	6
AB40420	#4 TO #2 ALUMINUM CONDUCTOR SPLICE RED/ORANGE	20	1	7
AB40100	#6 TO #4 ALUMINUM CONDUCTOR SPLICE BLUE	50	1	14
AB40600	1/0 ALUMINUM CONDUCTOR SPLICE YELLOW	20	1	9
AB407600	1/0 TO 2/0 ALUMINUM CONDUCTOR SPLICE GRAY-YELLOW	25	1	19
AB40700	2/0 ALUMINUM CONDUCTOR SPLICE GRAY	20	1	21
AB40800	3/0 ALUMINUM CONDUCTOR SPLICE BLACK	25	1	32
AB409800	3/0 , 4/0 ALUMINUM CONDUCTOR SPLICE PINK-BLACK	20	1	40
AB40900	4/0 ALUMINUM CONDUCTOR SPLICE PINK	20	1	40
AB41000	266.8 (18/1) ALUMINUM CONDUCTOR SPLICE BROWN	20	1	28
AB4111000	266.8(18/1) TO 336.4(18/1) ALUMINUM CONDUCTOR SPLICE GREEN-BROWN	20	1	40
AB41100	336.4 (18/1) ALUMINUM CONDUCTOR SPLICE GREEN	20	1	36
AB41200	397.5 (18/1) ALUMINUM CONDUCTOR SPLICE BLUE	10	1	32
AB41300	477 (18/1) ALUMINUM CONDUCTOR SPLICE WHITE	20	1	56

Strand Connectors



Allied Bolt Products LLC

Guy Strain Insulator

Porcelain Guy Strain Insulator

PART#	DESCRIPTION	PKG QTY	CTN QTY	CTN WT.
972	3/8" PORCELAIN GUY STRAIN INSULATOR - 10,000 LOAD ANSI 54-1	50	1	53
973	1/2" PORCELAIN GUY STRAIN INSULATOR - 12,000 LOAD ANSI 54-2	25	1	42
974	5/8" PORCELAIN GUY STRAIN INSULATOR - 20,000 LOAD ANSI 54-4	12	1	55



Allied Bolt Products LLC

B Strand Connector

B Strand Connector

PART#	DESCRIPTION	PKG QTY	CTN QTY	CTN WT.
2181	B STRAND CONNECTOR	10	1	14



Allied Bolt Products LLC

Strand Splice

EHS STRAND SPLICE

PART#	DESCRIPTION	PKG QTY	CTN QTY	CTN WT.
AB504000	1/4" EHS STRAND SPLICE	50	1	27
AB504100	5/16" EHS STRAND SPLICE	50	1	36
AB504200	3/8" EHS STRAND SPLICE	25	1	30
AB504300	7/16" EHS STRAND SPLICE	25	1	38
AB504400	1/2" EHS STRAND SPLICE	25	1	42



Allied Bolt Products LLC

ALL GRADE STRAND SPLICE

PART#	DESCRIPTION	PKG QTY	CTN QTY	CTN WT.
AB500000	1/4" STRAND SPLICE ALL GRADE	50	1	16
AB500100	5/16" STRAND SPLICE ALL GRADE	50	1	30
AB500200	3/8" STRAND SPLICE ALL GRADE	50	1	22



Allied Bolt Products LLC

STRAND REDUCING SPLICE

STRAND REDUCING SPLICE

PART#	DESCRIPTION	PKG QTY	CTN QTY	CTN WT.
AB508600	1/4" TO 3/16" STRAND REDUCING SPLICE	50	1	50
AB508700	5/16" TO 1/4" STRAND REDUCING SPLICE	50	1	50
AB502200	3/8" TO 5/16" STRAND REDUCING SPLICE	50	1	50
AB502300	7/16" TO 3/8" STRAND REDUCING SPLICE	50	1	50

Eyelets



Allied Bolt Products LLC

Standard Eyelet

STANDARD EYELET

PART#	DESCRIPTION	PKG QTY	CTN QTY	CTN WT.
2054	5/8" STANDARD EYELET	25	1	30
2055	3/4" STANDARD EYELET	25	1	39



Allied Bolt Products LLC

Straight Single Strand Eyelet

STRAIGHT SINGLE STRAND EYELET

PART#	DESCRIPTION	PKG QTY	CTN QTY	CTN WT.
2050	5/8" STRAIGHT SINGLE STRAND EYELET	25	1	29
2051	3/4" STRAIGHT SINGLE STRAND EYELET	25	1	31



Allied Bolt Products LLC

Single Strand Angled Eyelet

ANGLED SINGLE STRAND EYELET

PART#	DESCRIPTION	PKG QTY	CTN QTY	CTN WT.
2060	5/8" ANGLED SINGLE STRAND EYELET	25	1	36
2061	3/4" ANGLED SINGLE STRAND EYELET	25	1	35

Eye Nuts



Single and Dual Forged Eye Nut

SINGLE FORGED EYE NUT

PART#	DESCRIPTION	PKG QTY	CTN QTY	CTN WT.
5050	5/8"-11 SINGLE FORGED EYE NUT	50	1	40
5051	3/4"-10 SINGLE FORGED EYE NUT	50	1	41



DUAL FORGED EYE NUT

PART#	DESCRIPTION	PKG QTY	CTN QTY	CTN WT.
5045	5/8"-11 DUAL STRAND EYE NUT	25	1	30
5046	3/4"-10 DUAL FORGED EYE NUT	25	1	44



Oval Eye Nut

OVAL EYE NUT

PART#	DESCRIPTION	PKG QTY	CTN QTY	CTN WT.
5875	1/2"-13 OVAL EYE NUT	50	1	28
5876	5/8"-11 OVAL EYE NUT	50	1	27
5877	3/4"-10 OVAL EYE NUT	50	1	34



FORGED OVAL EYE NUT

PART#	DESCRIPTION	PKG QTY	CTN QTY	CTN WT.
5878	7/8"-9 OVAL EYE NUT	25	1	39
5879	1"-8 OVAL EYE NUT	25	1	42

U Guards and Ground Wire Molding

POLY CABLE GUARD

POLYETHYLENE U CABLE GUARD

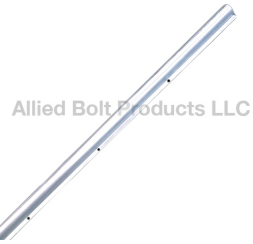


Allied Bolt Products, LLC

PART#	DESCRIPTION	PKG QTY	CTN QTY	CTN WT.
9001-15	1" X 5' POLYETHYLENE U CABLE GUARD	6	1	60
9001-18	1" X 8' POLYETHYLENE U CABLE GUARD	6	1	60
9001-110	1" X 10' POLYETHYLENE U CABLE GUARD	6	1	60
9001-25	2" X 5' POLYETHYLENE U CABLE GUARD	6	1	60
9001-28	2" X 8' POLYETHYLENE U CABLE GUARD	6	1	60
9001-210	2" X 10' POLYETHYLENE U CABLE GUARD	6	1	60
9001-35	3" X 5' POLYETHYLENE U CABLE GUARD	6	1	60
9001-38	3" X 8' POLYETHYLENE U CABLE GUARD	6	1	60
9001-310	3" X 10' POLYETHYLENE U CABLE GUARD	6	1	60
9001-45	4" X 5' POLYETHYLENE U CABLE GUARD	6	1	60
9001-48	4" X 8' POLYETHYLENE U CABLE GUARD	6	1	60
9001-410	4" X 10' POLYETHYLENE U CABLE GUARD	6	1	60
9001-55	5" X 5' POLYETHYLENE U CABLE GUARD	6	1	60
9001-58	5" X 8' POLYETHYLENE U CABLE GUARD	6	1	60
9001-510	5" X 10' POLYETHYLENE U CABLE GUARD	6	1	60
9001-65	6" X 5' POLYETHYLENE U CABLE GUARD	6	1	60
9001-68	6" X 8' POLYETHYLENE U CABLE GUARD	6	1	60
9001-610	6" X 10' POLYETHYLENE U CABLE GUARD	6	1	60

STEEL FLANGED U GUARD HOT DIP GALVANIZED

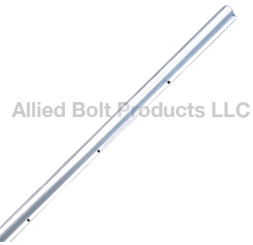
1" STEEL FLANGED U GUARD HOT DIP GALVANIZED



Allied Bolt Products, LLC

PART#	DESCRIPTION	PKG QTY	CTN QTY	CTN WT.
9004-110	1" X 10' STEEL FLANGED U GUARD HOT DIP GALVANIZED	1	1	9

1-1/4" STEEL FLANGED U GUARD HOT DIP GALVANIZED



Allied Bolt Products, LLC

PART#	DESCRIPTION	PKG QTY	CTN QTY	CTN WT.
9004-1145	1-1/4" X 5' STEEL FLANGED U GUARD HOT DIP GALVANIZED	1	1	6
9004-1148	1-1/4" X 8' STEEL FLANGED U GUARD HOT DIP GALVANIZED	1	1	10

2" STEEL FLANGED U GUARD HOT DIP GALVANIZED



Allied Bolt Products, LLC

PART#	DESCRIPTION	PKG QTY	CTN QTY	CTN WT.
9004-25	2" X 5' STEEL FLANGED U GUARD HOT DIP GALVANIZED	1	1	9
9004-28	2" X 8' STEEL FLANGED U GUARD HOT DIP GALVANIZED	1	1	14
9004-210	2" X 10' STEEL FLANGED U GUARD HOT DIP GALVANIZED	1	1	18

3" STEEL FLANGED U GUARD HOT DIP GALVANIZED

Allied Bolt Products LLC

PART#	DESCRIPTION	PKG QTY	CTN QTY	CTN WT.
9004-35	3" X 5' STEEL FLANGED U GUARD HOT DIP GALVANIZED	1	1	12
9004-38	3" X 8' STEEL FLANGED U GUARD HOT DIP GALVANIZED	1	1	19
9004-310	3" X 10' STEEL FLANGED U GUARD HOT DIP GALVANIZED	1	1	24

4" STEEL FLANGED U GUARD HOT DIP GALVANIZED

Allied Bolt Products LLC

PART#	DESCRIPTION	PKG QTY	CTN QTY	CTN WT.
9004-45	4" X 5' STEEL FLANGED U GUARD HOT DIP GALVANIZED	1	1	15
9004-48	4" X 8' STEEL FLANGED U GUARD HOT DIP GALVANIZED	1	1	27
9004-410	4" X 10' STEEL FLANGED U GUARD HOT DIP GALVANIZED	1	1	34

5" STEEL FLANGED U GUARD HOT DIP GALVANIZED

Allied Bolt Products LLC

PART#	DESCRIPTION	PKG QTY	CTN QTY	CTN WT.
9004-55	5" X 5' STEEL FLANGED U GUARD HOT DIP GALVANIZED	1	1	18
9004-58	5" X 8' STEEL FLANGED U GUARD HOT DIP GALVANIZED	1	1	28
9004-510	5" X 10' STEEL FLANGED U GUARD HOT DIP GALVANIZED	1	1	36

6" STEEL FLANGED U GUARD HOT DIP GALVANIZED

Allied Bolt Products LLC

PART#	DESCRIPTION	PKG QTY	CTN QTY	CTN WT.
9004-65	6" X 5' STEEL FLANGED U GUARD HOT DIP GALVANIZED	1	1	22

7" STEEL FLANGED U GUARD HOT DIP GALVANIZED

Allied Bolt Products LLC

PART#	DESCRIPTION	PKG QTY	CTN QTY	CTN WT.
9004-75	7" X 5' STEEL FLANGED U GUARD HOT DIP GALVANIZED	1	1	25

Drive Hooks



Allied Bolt Products LLC

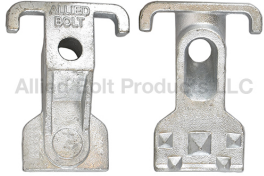
Drive Hook
DRIVE HOOK

PART#	DESCRIPTION	PKG QTY	CTN QTY	CTN WT.
2001	5/16" X 3-1/2" DRIVE HOOK	500	1	53
920	7/16" X 4-3/4" DRIVE HOOK	25	8	51
9200	7/16" X 4-3/4" STAINLESS DRIVE HOOK	25	8	51

Guy Hook Attachments

B Guy Hook

B GUY HOOK



PART#	DESCRIPTION	PKG QTY	CTN QTY	CTN WT.
5060	5/8" B GUY HOOK	25	1	38
5061	3/4" B GUY HOOK	25	1	46
5062	1" B GUY HOOK	10	1	32

Combination Type Guy Hook

COMBINATION TYPE GUY HOOK WITH 11/16" MOUNTING HOLES



PART#	DESCRIPTION	PKG QTY	CTN QTY	CTN WT.
22001	COMBINATION TYPE GUY HOOK WITH 11/16" MOUNTING HOLES	20	1	35
22001LT	COMBINATION TYPE GUY HOOK WITH 11/16" MOUNTING HOLES W/O SPURS	20	1	34
22002	COMBINATION TYPE GUY HOOK WITH 11/16" AND 13/16" MOUNTING HOLES	20	1	35
22002LT	COMBINATION TYPE GUY HOOK WITH 11/16" AND 13/16" MOUNTING HOLES W/O SPURS	20	1	34
22004	COMBINATION TYPE GUY HOOK WITH 13/16" CLEVIS HOLE	20	1	33
22004LT	COMBINATION TYPE GUY HOOK WITH 13/16" CLEVIS HOLE W/O SPURS	20	1	34

Pole Eye Plate Guy Hook

POLE EYE PLATE GUY HOOK



PART#	DESCRIPTION	PKG QTY	CTN QTY	CTN WT.
22007	POLE EYE PLATE GUY HOOK WITH 13/16" MOUNTING HOLES	10	1	62
22008	POLE EYE PLATE GUY HOOK WITH 15/16" MOUNTING HOLES	10	1	64

POLE EYE PLATE ATTACHMENT

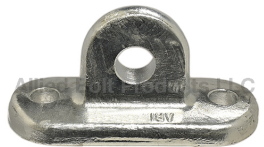
POLE EYE PLATE ATTACHMENT



PART#	DESCRIPTION	PKG QTY	CTN QTY	CTN WT.
22006	POLE EYE PLATE ATTACHMENT	25	1	52

Dead-End Tee Guy Attachment

PART#	DESCRIPTION	PKG QTY	CTN QTY	CTN WT.
22003	DEAD-END TEE GUY ATTACHMENT	10	1	64



J Guy Hook



PART#	DESCRIPTION	PKG QTY	CTN QTY	CTN WT.
2575	J GUY HOOK	50	1	30

Sidewalk Guying Fixture

SIDEWALK GUY FIXTURE FOR 2" PIPE



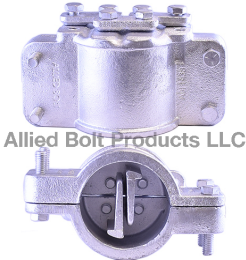
PART#	DESCRIPTION	PKG QTY	CTN QTY	CTN WT.
1429	POLE PLATE AND END FITTING FOR 2" PIPE KIT	1	1	5
1436	POLE PLATE FOR SIDEWALK GUYING FIXTURE FOR 2" PIPE	5	1	25
1437	END FITTING FOR SIDEWALK GUYING FIXTURE FOR 2" PIPE	5	1	15

SIDEWALK GUY FIXTURE FOR 2-1/2" PIPE



PART#	DESCRIPTION	PKG QTY	CTN QTY	CTN WT.
1450	POLE PLATE AND END FITTING FOR 2-1/2" PIPE KIT	1	1	5
1420	POLE PLATE FOR SIDEWALK GUYING FIXTURE FOR 2-1/2" PIPE	5	1	30
1421	END FITTING FOR SIDEWALK GUY FIXTURE FOR 2-1/2" PIPE	5	1	16

TRIPLE SIDEWALK END FITTING FOR 2-1/2" PIPE



PART#	DESCRIPTION	PKG QTY	CTN QTY	CTN WT.
1438	TRIPLE SIDEWALK END FITTING FOR 2-1/2" PIPE	5	1	39

Insulator Hardware

Nylon Crossarm Pin (Low Voltage)

5/8" SHORT SHANK CROSSARM PIN W/ 1" NYLON THREAD



PART#	DESCRIPTION	PKG QTY	CTN QTY	CTN WT.
2718	5/8" x 5" x 1-1/2" SHORT SHANK NYLON CROSSARM PIN	50	1	50
2719	5/8" x 6" x 1-1/2" SHORT SHANK NYLON CROSSARM PIN	45	1	50
2720	5/8" x 6" x 2-1/2" SHORT SHANK NYLON CROSSARM PIN	45	1	47

3/4" SHORT SHANK CROSSARM PIN W/ 1" NYLON THREAD



PART#	DESCRIPTION	PKG QTY	CTN QTY	CTN WT.
2721	3/4" x 6" x 1-3/4" SHORT SHANK NYLON CROSSARM PIN	25	1	40
2723	3/4" x 7" x 2-1/2" SHORT SHANK NYLON CROSSARM PIN	25	1	49



5/8" LONG SHANK CROSSARM PIN W/ 1" NYLON THREAD

PART#	DESCRIPTION	PKG QTY	CTN QTY	CTN WT.
2711	5/8" X 5" X 5-3/4" LONG SHANK NYLON CROSSARM PIN	25	1	35
2713	5/8" X 6" X 5-3/4" LONG SHANK CROSSARM PIN	25	1	37
2712	5/8" X 5" X 6-1/2" LONG SHANK NYLON CROSSARM PIN	25	1	36
2714	5/8" X 6" X 6-1/2" LONG SHANK NYLON CROSSARM PIN	25	1	38
2716	5/8" X 5" X 8" LONG SHANK NYLON CROSSARM PIN	25	1	40
2709	5/8" X 6" X 7-1/2" LONG SHANK NYLON CROSSARM PIN	25	1	50



3/4" LONG SHANK CROSSARM PIN W/ 1" NYLON THREAD

PART#	DESCRIPTION	PKG QTY	CTN QTY	CTN WT.
2715	3/4" X 6" X 6-1/2" LONG SHANK NYLON CROSSARM PIN	20	1	47
2717	3/4" X 6" X 8" LONG SHANK NYLON CROSSARM PIN	20	1	53



High Voltage Pin

HIGH VOLTAGE 1" NYLON THREAD CROSSARM PIN

PART#	DESCRIPTION	PKG QTY	CTN QTY	CTN WT.
2740	5/8" X 6" X 6-1/2" HIGH VOLTAGE 1" NYLON THREAD CROSSARM PIN	10	1	26
2741	5/8" X 8" X 5-3/4" HIGH VOLTAGE 1" NYLON THREAD CROSSARM PIN	10	1	30
2742	3/4" X 6" X 6-1/2" HIGH VOLTAGE 1" NYLON THREAD CROSSARM PIN	10	1	30
2743	3/4" X 7" X 6-1/2" HIGH VOLTAGE 1" NYLON THREAD CROSSARM PIN	10	1	31



HIGH VOLTAGE 1-3/8" NYLON THREAD CROSSARM PIN

PART#	DESCRIPTION	PKG QTY	CTN QTY	CTN WT.
2724	3/4" x 7" x 1-3/4" HIGH VOLTAGE 1-3/8" NYLON THREAD CROSSARM PIN	25	1	50
2725	3/4" x 8" x 1-3/4" HIGH VOLTAGE 1-3/8" NYLON THREAD CROSSARM PIN	25	1	79
2744	5/8" X 7" X 7" HIGH VOLTAGE 1-3/8" NYLON THREAD CROSSARM PIN	10	1	32
2746	3/4" X 7" X 7" HIGH VOLTAGE 1-3/8" NYLON THREAD CROSSARM PIN	10	1	42
2745	3/4" X 8" X 7" HIGH VOLTAGE 1-3/8" NYLON THREAD CROSSARM PIN	10	1	44
2747	3/4" X 10" X 7" HIGH VOLTAGE 1-3/8" NYLON THREAD CROSSARM PIN	10	1	45



SERVICE WEDGE CLAMP

WEDGE CLAMP WITH IRRIDITE

PART#	DESCRIPTION	PKG QTY	CTN QTY	CTN WT.
10076	SMALL (#2- 6) WEDGE CLAMP W/ IRRIDITE	100	1	15
10077	MEDIUM (1/0- #4) WEDGE CLAMP W/ IRRIDITE	50	1	13
10078	LARGE (4/0- 2/0) WEDGE CLAMP W/ IRRIDITE	50	1	14



WEDGE CLAMP NON-IRRIDITE

PART#	DESCRIPTION	PKG QTY	CTN QTY	CTN WT.
10076NI	SMALL (#2- 6) WEDGE CLAMP NON-IRRIDITE	100	1	15
10077NI	MEDIUM (1/0- #4) WEDGE CLAMP W/ NON-IRRIDITE	50	1	14
10078NI	LARGE (4/0- 2/0) WEDGE CLAMP NON-IRRIDITE	50	1	14



FLEXIBLE WEDGE CLAMP

PART#	DESCRIPTION	PKG QTY	CTN QTY	CTN WT.
10076NI-FL	SMALL (#2- 6) FLEXIBLE WEDGE CLAMP	100	1	15
10077NI-FL	MEDIUM (1/0- #4) FLEXIBLE WEDGE CLAMP	50	1	17
10078NI-FL	LARGE (4/0- 2/0) FLEXIBLE WEDGE CLAMP	50	1	17



Pole Top Pin

POLE TOP PIN W/ 1" NYLON THREAD

PART#	DESCRIPTION	PKG QTY	CTN QTY	CTN WT.
2733	15" POLE TOP PIN W/ 2 HOLES (LOWER HOLE IS SLOTTED) 1" NYLON THREAD	10	1	52
2730	18" POLE TOP PIN W/ 3 HOLES (LOWER HOLE IS SLOTTED) 1" NYLON THREAD	10	1	43
2734	20" POLE TOP PIN W/ 2 HOLES (LOWER HOLE IS SLOTTED) 1" NYLON THREAD	10	1	33
2731	20" POLE TOP PIN W/ 3 HOLES (LOWER HOLE IS SLOTTED) 1" NYLON THREAD	10	1	33
2732	24" POLE TOP PIN W/ 3 HOLES (LOWER HOLE IS SLOTTED) 1" NYLON THREAD	10	1	44



POLE TOP PIN W/ 1- 3/8" NYLON THREAD

PART#	DESCRIPTION	PKG QTY	CTN QTY	CTN WT.
2736	20" POLE TOP PIN W/ 2 HOLES (LOWER HOLE IS SLOTTED) 1-3/8" NYLON THREAD	5	1	17
2737	24" POLE TOP PIN W/ 2 HOLES (LOWER HOLE IS SLOTTED) 1-3/8" NYLON THREAD	5	1	30



CLAMP TYPE CROSSARM PIN

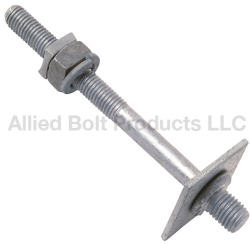
CLAMP TYPE CROSSARM PIN

PART#	DESCRIPTION	PKG QTY	CTN QTY	CTN WT.
6425	1" CLAMP TYPE CROSSARM PIN	5	1	27
6426	1-3/8" CLAMP TYPE CROSSARM PIN	5	1	28



Offset Pole Top Pin

PART#	DESCRIPTION	PKG QTY	CTN QTY	CTN WT.
2735	OFFSET POLE TOP PIN W/ 1-3/8" NYLON THREAD	5	1	30



Inulator Stud

LONG SHANK INSULATOR STUD HDG

PART#	DESCRIPTION	PKG QTY	CTN QTY	CTN WT.
345814	5/8" X 7" LONG SHANK INSULATOR STUD HDG	25	1	32
345810	5/8" X 7-1/2" LONG SHANK INSULATOR STUD HDG	25	1	31
345822	3/4" X 7-1/2" LONG SHANK INSULATOR STUD HDG	25	1	37
345812	5/8" X 10" LONG SHANK INSULATOR STUD HDG	25	1	36
345816	5/8" X 10" LONG SHANK INSULATOR STUD HDG	25	1	32
345824	3/4" X 10" LONG SHANK INSULATOR STUD HDG	25	1	45
345818	5/8" X 12" LONG SHANK INSULATOR STUD HDG	25	1	40
345820	5/8" X 14" LONG SHANK INSULATOR STUD HDG	20	1	43



SHORT SHANK INSULATOR STUD HDG

PART#	DESCRIPTION	PKG QTY	CTN QTY	CTN WT.
345826	5/8" X 1-3/4" SHORT SHANK INSULATOR STUD HDG	25	1	14
345828	3/4" X 1-3/4" SHORT SHANK INSULATOR STUD HDG	25	1	15



Anti-Static Clip

Insulator Hardware

PART#	DESCRIPTION	PKG QTY	CTN QTY	CTN WT.
2965	ANTI-STATIC CLIP	550	1	44



Mounting Bracket

L MOUNTING BRACKET

PART#	DESCRIPTION	PKG QTY	CTN QTY	CTN WT.
2950	L MOUNTING BRACKET	1	16	49
2953	L MOUNTING BRACKET WITH BACK STRAP	1	16	78



L MOUNTING BRACKET WITH BACK STRAP ASSEMBLY

PART#	DESCRIPTION	PKG QTY	CTN QTY	CTN WT.
2951	L MOUNTING BRACKET WITH BACK STRAP ASSEMBLY w/5" BOLTS	1	16	45
2952	L MOUNTING BRACKET WITH BACKSTRAP ASSEMBLY w/6" BOLTS	1	16	45



Allied Bolt Products LLC

ALUMINUM MOUNTING BRACKET

PART#	DESCRIPTION	PKG QTY	CTN QTY	CTN WT.
2955	ALUMINUM MOUNTING BRACKET	100	1	28



Allied Bolt Products LLC

Pole Top Bracket

POLE TOP BRACKET

PART#	DESCRIPTION	PKG QTY	CTN QTY	CTN WT.
5160	POLE TOP BRACKET	10	1	40
5161	LARGE POLE TOP BRACKET	5	1	60



Allied Bolt Products LLC

CENTERING WASHER FOR CROSSARM PIN

TOP CENTERING WASHER FOR CROSSARM PIN

PART#	DESCRIPTION	PKG QTY	CTN QTY	CTN WT.
8656	TOP CENTERING WASHER FOR 5/8" CROSSARM PIN	50	1	55
8658	TOP CENTERING WASHER FOR 3/4" CROSSARM PIN	50	1	50



Allied Bolt Products LLC

BOTTOM CENTERING WASHER FOR CROSSARM PIN

PART#	DESCRIPTION	PKG QTY	CTN QTY	CTN WT.
8655	BOTTOM CENTERING WASHER FOR 5/8" CROSSARM PIN	125	1	50
8657	BOTTOM CENTERING WASHER FOR 3/4" CROSSARM PIN	125	1	50

Nuts and Lock Nuts



Allied Bolt Products LLC

Regular Square Nut

REGULAR SQUARE NUT

PART#	DESCRIPTION	PKG QTY	CTN QTY	CTN WT.
90044	3/8" REGULAR SQUARE NUT	100	8	32
8205	1/2" REGULAR SQUARE NUT	100	4	22
8206	5/8" REGULAR SQUARE NUT	100	1	11
8200	3/4" REGULAR SQUARE NUT	100	1	16
8201	7/8" REGULAR SQUARE NUT	100	1	28
8375	1" REGULAR SQUARE NUT	50	1	18

Concave Locknut

CONCAVE SQUARE LOCKNUT



PART#	DESCRIPTION	PKG QTY	CTN QTY	CTN WT.
22016	3/8" CONCAVE SQUARE LOCKNUT	100	32	43
22009	1/2" CONCAVE SQUARE LOCKNUT	100	10	30
22010	5/8" CONCAVE SQUARE LOCKNUT	100	10	53
22011	3/4" CONCAVE SQUARE LOCKNUT	100	6	49
22014	7/8" CONCAVE SQUARE LOCKNUT	100	4	34
22015	1" CONCAVE SQUARE LOCKNUT	100	4	44

CONCAVE HEX LOCKNUT



PART#	DESCRIPTION	PKG QTY	CTN QTY	CTN WT.
22012	5/8" CONCAVE HEX LOCKNUT	100	4	17
22013	3/4" CONCAVE HEX LOCKNUT	100	4	22

Palnut Type Locknut

Low Profile Hex Locknut



PART#	DESCRIPTION	PKG QTY	CTN QTY	CTN WT.
7851	3/8" LOW PROFILE HEX LOCKNUT	100	16	16
7852	1/2" LOW PROFILE HEX LOCKNUT	100	16	13
7853	5/8" LOW PROFILE HEX LOCKNUT	100	16	15
7854	3/4" LOW PROFILE HEX LOCKNUT	100	8	15
7855	7/8" LOW PROFILE HEX LOCKNUT	100	4	11

Pole Plates

DOUBLE ARMING PLATE



PART#	DESCRIPTION	PKG QTY	CTN QTY	CTN WT.
5905	DOUBLE ARMING PLATE 16"	10	1	46
5906	DOUBLE ARMING PLATE 24"	5	1	42

Pole Gain



PART#	DESCRIPTION	PKG QTY	CTN QTY	CTN WT.
4078	5-1/4" x 4" POLE GAIN	25	1	35



Lift Plate

LIFT PLATE

PART#	DESCRIPTION	PKG QTY	CTN QTY	CTN WT.
5182	2 HOLE LIFT PLATE	25	1	31
2820	3 HOLE LIFT PLATE	50	1	54



Strain Plate

PART#	DESCRIPTION	PKG QTY	CTN QTY	CTN WT.
5180	STRAIN PLATE	25	1	33

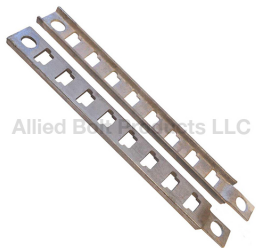
Underground Racks



Cable Rack Hook

CABLE RACK HOOK

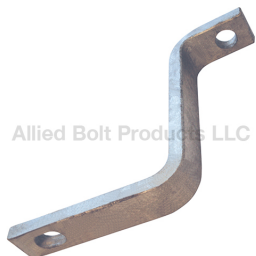
PART#	DESCRIPTION	PKG QTY	CTN QTY	CTN WT.
9600-4	4" CABLE RACK HOOK	100	1	43
9600-7	7-1/2" CABLE RACK HOOK	50	1	54
9600-10L	10" CABLE RACK HOOK	51	1	50
9600-10	10" CABLE RACK HOOK HEAVY DUTY	50	1	50
9600-14	14" CABLE RACK HOOK	25	1	40
9600-18	18" CABLE RACK HOOK	10	1	28



Underground Cable Rack

CABLE RACK WITH HOLE

PART#	DESCRIPTION	PKG QTY	CTN QTY	CTN WT.
9601-8	15" CABLE RACK WITH 8 'T' SLOTS	50	1	74
9601-14	24" CABLE RACK WITH 14 'T' SLOTS	10	1	20
9601-18	30" CABLE RACK WITH 18 'T' SLOTS	10	1	28
9601-37	55-1/4" CABLE RACK WITH 37 'T' SLOTS	1	1	6
9601-43	64-1/4" CABLE RACK WITH 43 'T' SLOTS	10	1	65
9601-47	70-1/4" CABLE RACK WITH 47 'T' SLOTS	1	1	7



Cable Rack Support

CABLE RACK SUPPORT

PART#	DESCRIPTION	PKG QTY	CTN QTY	CTN WT.
9610	3-5/8" X 4-1/4" X 2-1/4" CABLE RACK SUPPORT	25	1	57
9611	6-9/16" X 5-3/4" X 2-5/8" CABLE RACK SUPPORT	25	1	56

Cable Rack Clip

Cable Rack Clip



PART#	DESCRIPTION	PKG QTY	CTN QTY	CTN WT.
9615	CABLE RACK CLIP	100	4	2

Service, Secondary, and Neutral Hardware

SECONDARY RACK

SECONDARY RACK FOR INSULATORS



PART#	DESCRIPTION	PKG QTY	CTN QTY	CTN WT.
7620	SECONDARY RACK 18" FOR 2 INSULATORS	1	1	5
7623	SECONDARY RACK 26" FOR 3 INSULATORS	1	1	7
7624	SECONDARY RACK 34" FOR 4 INSULATORS	1	1	8

SECONDARY RACK WITH INSULATORS



PART#	DESCRIPTION	PKG QTY	CTN QTY	CTN WT.
7621	SECONDARY RACK 18" WITH 2 INSULATORS	7	1	43
7622	SECONDARY RACK 26" FOR 3 INSULATORS	1	1	10
7625	SECONDARY RACK 34" WITH 4 INSULATORS	3	1	33

SPOOL INSULATORS

SPOOL INSULATORS



PART#	DESCRIPTION	PKG QTY	CTN QTY	CTN WT.
4203	53-2 SPOOL INSULATOR	50	1	60
4205	53-3 SPOOL INSULATOR	12	1	14

NYLON ALLOY SCREW TYPE WIREHOLDER



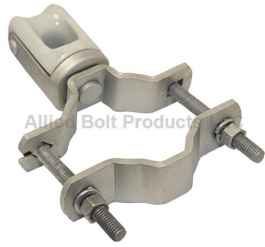
PART#	DESCRIPTION	PKG QTY	CTN QTY	CTN WT.
9320	2-1/4" NYLON ALLOY SCREW TYPE WIREHOLDER	25	1	7
9321	3" NYLON ALLOY SCREW TYPE WIREHOLDER	25	1	7
9322	4" NYLON ALLOY SCREW TYPE WIREHOLDER	25	1	7

REINFORCED WIRE HOLDER

REINFORCED WIRE HOLDER



PART#	DESCRIPTION	PKG QTY	CTN QTY	CTN WT.
9223	#22 x 2-1/4" REINFORCED WIRE HOLDER	25	1	14
9221	#22 x 3" REINFORCED WIRE HOLDER	25	1	15
9224	#22 x 4" REINFORCED WIRE HOLDER	25	1	18



PORCELAIN MAST MOUNTED WIREHOLDER

PORCELAIN MAST MOUNTED WIREHOLDER

PART#	DESCRIPTION	PKG QTY	CTN QTY	CTN WT.
9255	1-1/4" - 2-1/2" PORCELAIN MAST MOUNTED WIREHOLDER	20	1	30
9256	2-1/2" - 4" PORCELAIN MAST MOUNTED WIRE HOLDER	20	1	30



NYLON ALLOY MAST MOUNTED WIREHOLDER

NYLON ALLOY MAST MOUNTED WIREHOLDER

PART#	DESCRIPTION	PKG QTY	CTN QTY	CTN WT.
9254	1-1/4" TO 2-1/2" NYLON MAST MOUNTED WIREHOLDER	20	1	21
9253	2-1/2" to 4" NYLON WIREHOLDER FOR MAST	20	1	21



SERVICE DEAD-END BRACKET

PART#	DESCRIPTION	PKG QTY	CTN QTY	CTN WT.
5063	SERVICE DEAD-END BRACKET	25	1	24

Spool Clevises



SWINGING CLEVIS

INSULATED SWINGING CLEVIS W/O MOUNTING BRACKET

PART#	DESCRIPTION	PKG QTY	CTN QTY	CTN WT.
8478	2-1/4" INSULATED SWINGING CLEVIS W/O MOUNTING BRACKET	50	1	23



INSULATED SWINGING CLEVIS

PART#	DESCRIPTION	PKG QTY	CTN QTY	CTN WT.
8480	3-1/4" X 5" INSULATED SWINGING CLEVIS	10	1	16



INSULATED SWINGING CLEVIS WITH MOUNTING BRACKET

PART#	DESCRIPTION	PKG QTY	CTN QTY	CTN WT.
8477	2-1/4" INSULATED SWINGING CLEVIS WITH MOUNTING BRACKET	20	1	18

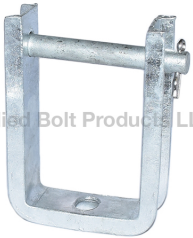


Allied Bolt Products LLC

CHANNEL BRACKET CLEVISES

CHANNEL CLEVIS WITH INSULATOR

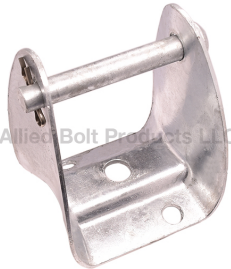
PART#	DESCRIPTION	PKG QTY	CTN QTY	CTN WT.
8475	CHANNEL BRACKET CLEVIS WITH ANSI 53-3 SPOOL INSULATOR	4	1	12
8476	CHANNEL BRACKET CLEVIS WITH ANSI 53-2 SPOOL INSULATOR	4	1	12



Allied Bolt Products LLC

CHANNEL BRACKET CLEVIS WITHOUT INSULATOR

PART#	DESCRIPTION	PKG QTY	CTN QTY	CTN WT.
8474	CHANNEL BRACKET CLEVIS WITHOUT SPOOL INSULATOR	10	1	18



Allied Bolt Products LLC

INSULATOR CLEVIS

SPOOL INSULATOR CLEVIS

PART#	DESCRIPTION	PKG QTY	CTN QTY	CTN WT.
8479	3-1/4" SPOOL INSULATOR CLEVIS	10	1	16

Lag Screws



Allied Bolt Products LLC

Drive Screw

HEX HEAD DRIVE SCREW REGULAR POINT

PART#	DESCRIPTION	PKG QTY	CTN QTY	CTN WT.
358	1/4" X 2" HEX HEAD DRIVE SCREW REGULAR POINT	50	16	21
367	1/4" X 2-1/2" HEX HEAD DRIVE SCREW REGULAR POINT	50	16	32



Allied Bolt Products LLC

SQUARE HEAD DRIVE SCREW REGULAR POINT

PART#	DESCRIPTION	PKG QTY	CTN QTY	CTN WT.
372	1/4" X 2-1/2" SQUARE HEAD DRIVE SCREW REGULAR POINT	50	16	32
377	5/16" X 3" SQUARE HEAD DRIVE SCREW REGULAR POINT	50	8	26
530	3/8" X 2-1/2" SQUARE DRIVE SCREW REGULAR POINT	50	4	17
531	3/8" X 4" SQUARE HEAD DRIVE SCREW REGULAR POINT	50	4	26
532	1/2" X 4" SQUARE HEAD DRIVE SCREW REGULAR POINT	50	4	43



Allied Bolt Products LLC

SQUARE HEAD FETTER DRIVE SCREW DRIVE POINT

PART#	DESCRIPTION	PKG QTY	CTN QTY	CTN WT.
3760	3/8" X 3" SQUARE HEAD FETTER DRIVE SCREW DRIVE POINT	50	4	23
378	3/8" X 4" SQUARE HEAD FETTER DRIVE SCREW DRIVE POINT	50	4	26
37605	1/2" X 3" SQUARE HEAD FETTER DRIVE SCREW DRIVE POINT	50	4	33
529	1/2" X 4" SQUARE HEAD FETTER DRIVE SCREW DRIVE POINT	50	4	43
528	1/2" X 4-1/2" SQUARE HEAD DRIVE SCREW DRIVE POINT	50	4	47
7850	5/8" X 6" SQUARE HEAD FETTER DRIVE SCREW DRIVE POINT	50	1	30



Allied Bolt Products LLC

SQUARE HEAD TWIST DRIVE SCREW DRIVE POINT

PART#	DESCRIPTION	PKG QTY	CTN QTY	CTN WT.
5290	1/2" X 4" SQUARE HEAD TWIST DRIVE SCREW DRIVE POINT	50	4	43
379	1/2" X 4-1/2" SQUARE HEAD TWIST DRIVE SCREW DRIVE POINT	200	1	47
743	1/2" X 6-1/2" SQUARE HEAD TWIST DRIVE SCREW DRIVE POINT	100	1	37

Coach Screw (Square Head Lag Screw)

COACH SCREW



Allied Bolt Products LLC

PART#	DESCRIPTION	PKG QTY	CTN QTY	CTN WT.
129	1/4" X 2" COACH SCREW	25	32	22
522	1/4" X 2" COACH SCREW	50	16	21
523	1/4" X 2-1/2" COACH SCREW	50	16	27
130	5/16" X 2-1/2" COACH SCREW	25	16	20
131	5/16" X 3" COACH SCREW	50	8	23
7000	3/8" X 1-3/4" COACH SCREW	100	4	25

Hex Lag Screw

1/4" HEX LAG SCREW



Allied Bolt Products LLC

PART#	DESCRIPTION	PKG QTY	CTN QTY	CTN WT.
932	1/4" X 1" HEX LAG SCREW	100	16	24
870	1/4" X 1-1/4" HEX LAG SCREW	100	16	28
85	1/4" X 1-1/2" HEX LAG SCREW	100	16	32
719	1/4" X 2" HEX LAG SCREW	100	8	20
933	1/4" X 2-1/2" HEX LAG SCREW	100	4	15
762	1/4" X 3" HEX LAG SCREW	100	4	15
765	1/4" X 3-1/2" HEX LAG SCREW	50	4	11
766	1/4" X 4" HEX LAG SCREW	50	4	8
776	1/4" X 4-1/2" HEX LAG SCREW	50	4	13
780	1/4" X 5" HEX LAG SCREW	50	4	15
781	1/4" X 6" HEX LAG SCREW	50	4	18

5/16" HEX LAG SCREW



Allied Bolt Products LLC

PART#	DESCRIPTION	PKG QTY	CTN QTY	CTN WT.
47	5/16" X 1-1/2" HEX LAG SCREW	100	8	26
768	5/16" X 2" HEX LAG SCREW	100	4	18
230	5/16" X 2-1/2" HEX LAG SCREW	50	8	20
783	5/16" X 3" HEX LAG SCREW	100	4	22
784	5/16" X 3-1/2" HEX LAG SCREW	50	4	17
785	5/16" X 4" HEX LAG SCREW	50	4	19
786	5/16" X 4-1/2" HEX LAG SCREW	50	4	11
789	5/16" X 5" HEX LAG SCREW	50	4	19
791	5/16" X 6" HEX LAG SCREW	50	4	15



3/8" HEX LAG SCREW

PART#	DESCRIPTION	PKG QTY	CTN QTY	CTN WT.
2003	3/8" X 1" HEX LAG SCREW	50	8	36
579	3/8" X 1-1/2" HEX LAG SCREW	100	8	36
721	3/8" X 2" HEX LAG SCREW	100	4	26
170	3/8" X 2-1/2" HEX LAG SCREW	100	4	28
722	3/8" X 3" HEX LAG SCREW	100	4	36
792	3/8" X 3-1/2" HEX LAG SCREW	50	4	24
582	3/8" X 4" HEX LAG SCREW	50	4	25
793	3/8" X 4-1/2" HEX LAG SCREW	50	4	30
794	3/8" X 5" HEX LAG SCREW	50	4	33
795	3/8" X 6" HEX LAG SCREW	50	4	30



1/2" HEX LAG SCREW

PART#	DESCRIPTION	PKG QTY	CTN QTY	CTN WT.
1686	1/2" X 1-1/2" HEX LAG SCREW	50	8	49
720	1/2" X 2" HEX LAG SCREW	100	4	46
796	1/2" X 2-1/2" HEX LAG SCREW	50	4	35
581	1/2" X 3" HEX LAG SCREW	50	4	41
797	1/2" X 3-1/2" HEX LAG SCREW	50	4	46
580	1/2" X 4" HEX LAG SCREW	50	4	44
584	1/2" X 4-1/2" HEX LAG SCREW	50	1	11
588	1/2" X 5" HEX LAG SCREW	50	4	63
589	1/2" X 6" HEX LAG SCREW	50	1	14
590	1/2" X 7" HEX LAG SCREW	50	1	18



5/8" HEX LAG SCREW

PART#	DESCRIPTION	PKG QTY	CTN QTY	CTN WT.
1507	5/8" X 5" HEX LAG SCREW	25	4	42



Hex Lag Screw Drive Point WITH Permaseal Washer

HEX LAG SCREW DRIVE POINT WITH PERMASEAL™ WASHER

PART#	DESCRIPTION	PKG QTY	CTN QTY	CTN WT.
7190DW	1/4" X 2" HEX LAG SCREW DRIVE POINT WITH PERMASEAL™ WASHER	1000	1	33
7191DW	1/4" X 2-1/2" HEX LAG SCREW DRIVE POINT WITH PERMASEAL™ WASHER	1000	1	35
7192DW	1/4" X 3" HEX LAG SCREW DRIVE POINT WITH PERMASEAL™ WASHER	1000	1	39
1710DW	1/4" X 4" HEX LAG SCREW DRIVE POINT WITH PERMASEAL™ WASHER	500	1	35



HEX HEAD DRIVE SCREW DRIVE POINT GALVANIZED

PART#	DESCRIPTION	PKG QTY	CTN QTY	CTN WT.
7220	3/8" x 3" HEX HEAD DRIVE SCREW DRIVE POINT GALVANIZED	40	4	31



Allied Bolt Products LLC

Hex Lag Screw w/ Permaseal™ Washer

HEX LAG SCREW W/ PERMASEAL WASHER

PART#	DESCRIPTION	PKG QTY	CTN QTY	CTN WT.
7190	1/4" X 2" HEX LAG SCREW W/ PERMASEAL™ WASHER	1000	1	14
7191	1/4" X 2-1/2" HEX LAG SCREW W/ PERMASEAL™ WASHER	1000	1	18
7192	1/4" X 3" HEX LAG SCREW W/ PERMASEAL™ WASHER	1000	1	40
1710	1/4" X 4" HEX LAG SCREW W/ PERMASEAL™ WASHER	500	1	24

Staples

Barbed Staple

BARBED STAPLE

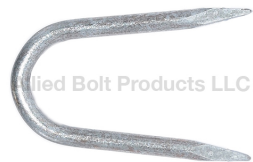


Allied Bolt Products LLC

PART#	DESCRIPTION	PKG QTY	CTN QTY	CTN WT.
22096	1-1/2" x 3/8" BARBED STAPLE	100	8	12
22097	2" x 3/8" BARBED STAPLE	100	8	16
22099	2" x 5/8" BARBED STAPLE	100	8	26
22098	3" x 1-1/16" BARBED STAPLE	100	4	34

Galvanized Staple (Rolled Point)

STAPLE GALVANIZED (ROLLED POINT)



Allied Bolt Products LLC

PART#	DESCRIPTION	PKG QTY	CTN QTY	CTN WT.
25112	1" X 3/8" X .125" ROLLED POINT GALVANIZED STAPLE	100	32	24
25116	1-1/2" X 3/8" X .148" ROLLED POINT GALVANIZED STAPLE	100	8	12
25021	1-3/4" X 5/8" X .187" ROLLED POINT GALVANIZED STAPLE	100	4	12
25117	1-3/4" X 3/8" X .148" ROLLED POINT GALVANIZED STAPLE	100	4	7
25115	2" X 1/2" X .162" ROLLED POINT GALVANIZED STAPLE	100	8	20
25003	2" X 5/8" X .162" ROLLED POINT GALVANIZED STAPLE	100	4	10
25022	2" X 3/4" X .187" ROLLED POINT GALVANIZED STAPLE	100	4	10
25004	2" X 1-1/16" X .187" ROLLED POINT GALVANIZED STAPLE	100	4	51
25023	2-1/4" X 7/8" X .187" ROLLED POINT GALVANIZED STAPLE	100	4	20
25024	2-1/2" X 1.20" X .250" ROLLED POINT GALVANIZED STAPLE	100	1	6
25005	3 X 1-1/16 X .250 ROLLED POINT GALVANIZED STAPLE	100	4	33
25113	3" X 1-1/2" X .25" ROLLED POINT GALVANIZED STAPLE	100	4	34
25114	3-1/2" X 1-3/4" X .25" ROLLED POINT GALVANIZED STAPLE	100	1	10

COPPER COATED STAPLE (ROLLED POINT)

COPPER COATED STAPLE (ROLLED POINT)



Allied Bolt Products LLC

PART#	DESCRIPTION	PKG QTY	CTN QTY	CTN WT.
25002	1" X 1/4" X .114" ROLLED POINT COPPER COATED STAPLE	100	40	20
25001	1-1/4" X 1/4" X .114" ROLLED POINT COPPER COATED STAPLE	100	32	21
25007	1-1/2" X 5/16" X .144" ROLLED POINT COPPER COATED STAPLE	100	16	20
25008	1-1/2" X 3/8" X .144" ROLLED POINT COPPER COATED STAPLE	100	8	11
25009	1-3/4" X 3/8" X .144" ROLLED POINT COPPER COATED STAPLE	100	8	12
25010	2" X 1/2" X .162" ROLLED POINT COPPER COATED STAPLE	100	8	14
25011	2" X 5/8" X .162" ROLLED POINT COPPER COATED STAPLE	100	4	10
25012	2" X 1-1/16" X .187" ROLLED POINT COPPER COATED STAPLE	100	4	13
25013	2-1/2" X 1/2" X .250" ROLLED POINT COPPER COATED STAPLE	100	4	15
25014	2-1/2" X 1-1/16" X .187" ROLLED POINT COPPER COATED STAPLE	100	1	4
25015	3" X 3/4" X .250" ROLLED POINT COPPER COATED STAPLE	100	1	8
25016	3" X 1" X .250" ROLLED POINT COPPER COATED STAPLE	100	1	8
25017	3" X 1-1/16" X .250" ROLLED POINT COPPER COATED STAPLE	100	1	9
25018	3" X 1-1/2" X .250" ROLLED POINT COPPER COATED STAPLE	100	1	8
25019	3-1/2" X 1-1/2" X .250" ROLLED POINT COPPER COATED STAPLE	100	1	10

Pole Steps



Tower Pole Step

TOWER POLE STEP GRADE 8 WITH NUT GALVANIZED

PART#	DESCRIPTION	PKG QTY	CTN QTY	CTN WT.
12680	5/8"-11 X 8-1/2" TOWER POLE STEP GRADE 8 WITH NUT GALVANIZED	25	1	53
12682	3/4"-10 X 8-1/2" TOWER POLE STEP GRADE 8 WITH NUT GALVANIZED	25	1	54



TOWER POLE STEP (STEP BOLT)

TOWER POLE STEP (STEP BOLT)

PART#	DESCRIPTION	PKG QTY	CTN QTY	CTN WT.
90025	3/4" x 9-3/4" TOWER POLE STEP (STEP BOLT)	25	1	45

Lock Washers



#316 STAINLESS DOUBLE COIL LOCK WASHER

#316 STAINLESS STEEL DOUBLE COIL LOCK WASHER

PART#	DESCRIPTION	PKG QTY	CTN QTY	CTN WT.
1108SS	5/8" #316 STAINLESS STEEL DOUBLE COIL LOCK WASHER	250	1	30
1109SS	3/4" #316 STAINLESS STEEL DOUBLE COIL LOCK WASHER	250	1	48



Premium Double Coil Lock Washer

DOUBLE COIL LOCK WASHER PREMIUM

PART#	DESCRIPTION	PKG QTY	CTN QTY	CTN WT.
1106	3/8" DOUBLE COIL LOCK WASHER PREMIUM	250	4	12
1107	1/2" DOUBLE COIL LOCK WASHER PREMIUM	250	1	13
1108	5/8" DOUBLE COIL LOCK WASHER PREMIUM	250	1	30
1109	3/4" DOUBLE COIL LOCK WASHER PREMIUM	250	1	48
1120	7/8" DOUBLE COIL LOCK WASHER PREMIUM	250	1	53
1121	1" DOUBLE COIL LOCK WASHER PREMIUM	150	1	45



Economy Double Coil Lock Washer

DOUBLE COIL LOCK WASHER ECONOMY

PART#	DESCRIPTION	PKG QTY	CTN QTY	CTN WT.
1186	3/8" DOUBLE COIL LOCK WASHER ECONOMY	100	16	33
1187	1/2" DOUBLE COIL LOCK WASHER ECONOMY	100	4	13
1192	5/8" DOUBLE COIL LOCK WASHER ECONOMY	100	4	29
1193	3/4" DOUBLE COIL LOCK WASHER ECONOMY	100	1	13



Spring Washer
SPRING WASHER

PART#	DESCRIPTION	PKG QTY	CTN QTY	CTN WT.
7012	1/2" SPRING WASHER	100	1	19
7013	5/8" SPRING WASHER	25	1	22
7014	3/4" SPRING WASHER	25	1	23
7016	7/8" SPRING WASHER	25	1	21
7020	1" SPRING WASHER	25	1	20



Split Lock Washer
MEDIUM SPLIT LOCK WASHER

PART#	DESCRIPTION	PKG QTY	CTN QTY	CTN WT.
246	1/4" MEDIUM SPLIT LOCK WASHER	100	40	9
241	5/16" MEDIUM SPLIT LOCK WASHER	100	40	19
240A	3/8" MEDIUM SPLIT LOCK WASHER	200	16	19
240	3/8" MEDIUM SPLIT LOCK WASHER	100	40	23
6100A	1/2" MEDIUM SPLIT LOCK WASHER	200	8	21
6100	1/2" MEDIUM SPLIT LOCK WASHER	100	16	21
6101A	5/8" MEDIUM SPLIT LOCK WASHER	200	4	22
6101	5/8" MEDIUM SPLIT LOCK WASHER	100	8	21
6102	3/4" MEDIUM SPLIT LOCK WASHER	100	8	32
6103	7/8" MEDIUM SPLIT LOCK WASHER	100	4	25
6109	1" MEDIUM SPLIT LOCK WASHER	100	4	36

Washers



Square Washer
SQUARE WASHER FOR 1/2" BOLT

PART#	DESCRIPTION	PKG QTY	CTN QTY	CTN WT.
11502	1/8" X 2" SQUARE WASHER FOR 1/2" BOLT	100	4	48



SQUARE WASHER FOR 5/8" BOLT

PART#	DESCRIPTION	PKG QTY	CTN QTY	CTN WT.
11501	1/8" X 2" SQUARE WASHER FOR 5/8" BOLT	100	4	48
11500	3/16" X 2-1/4" SQUARE WASHER FOR 5/8" BOLT	100	2	48
11559	1/4" X 3-1/2" SQUARE WASHER FOR 5/8" BOLT	50	1	58
11500SS	3/16" X 2-1/4" STAINLESS STEEL SQUARE WASHER FOR 5/8" BOLT	100	2	49



SQUARE WASHER FOR 3/4" BOLT

PART#	DESCRIPTION	PKG QTY	CTN QTY	CTN WT.
11550	3/16" X 2-1/4" SQUARE WASHER FOR 3/4" BOLT	100	2	48
11550SS	3/16" X 2-1/4" STAINLESS STEEL SQUARE WASHER FOR 3/4" BOLT	100	2	44
11551	1/4" X 3" SQUARE WASHER FOR 3/4" BOLT	100	1	57
11556	3/8" x 3-1/2" SQUARE WASHER FOR 3/4" BOLT	50	1	56
11557	3/16" X 4" SQUARE WASHER FOR 3/4" BOLT	50	1	33

SQUARE WASHER FOR 7/8" BOLT



PART#	DESCRIPTION	PKG QTY	CTN QTY	CTN WT.
11600	3/8" X 3-1/2" SQUARE WASHER FOR 7/8" BOLT	50	1	31
11553	5/16" x 3" SQUARE WASHER FOR 7/8" BOLT	75	1	52
11549	1/4" x 4" SQUARE WASHER FOR 7/8" BOLT	50	1	44

SQUARE WASHER FOR 1" BOLT



PART#	DESCRIPTION	PKG QTY	CTN QTY	CTN WT.
11705	1/2" X 4" SQUARE WASHER FOR 1" BOLT	25	1	47
11700	3/8" X 6" SQUARE WASHER FOR 1" BOLT	15	1	58

STAINLESS STEEL SQUARE WASHER



PART#	DESCRIPTION	PKG QTY	CTN QTY	CTN WT.
11500SS	3/16" X 2-1/4" STAINLESS STEEL SQUARE WASHER FOR 5/8" BOLT	100	2	49
11550SS	3/16" X 2-1/4" STAINLESS STEEL SQUARE WASHER FOR 3/4" BOLT	100	2	44

Curved Washer

5/8" CURVED WASHER



PART#	DESCRIPTION	PKG QTY	CTN QTY	CTN WT.
11552	CURVED WASHER 2-1/4" X 2-1/4" X 11/16" HOLE X 3/16" THICK	50	4	42
11555	CURVED WASHER 2-1/2" X 2-1/2" X 11/16" HOLE X 3/16" THICK	50	4	56
233	CURVED WASHER 3" X 3" X 11/16" HOLE X 1/4" THICK	50	2	65

3/4" CURVED WASHER



PART#	DESCRIPTION	PKG QTY	CTN QTY	CTN WT.
244	CURVED WASHER 3" X 3" X 13/16" HOLE X 1/4" THICK	50	2	54
231	CURVED WASHER 3-1/8" X 3-1/4" X 13/16" HOLE X 1/4" THICK	50	2	58
221	CURVED WASHER 4" X 4" X 13/16" HOLE X 1/4" THICK	50	1	42
220	CURVED WASHER 4" X 4" X 13/16" HOLE X 3/8" THICK	25	1	42

7/8" CURVED WASHER



PART#	DESCRIPTION	PKG QTY	CTN QTY	CTN WT.
238	CURVED WASHER 3-3/8" X 3-1/2" X 15/16" HOLE X 3/8" THICK	50	1	53
228	CURVED WASHER 4" X 4" X 15/16" HOLE X 1/4" THICK	50	1	59

1" CURVED WASHER



PART#	DESCRIPTION	PKG QTY	CTN QTY	CTN WT.
237	CURVED WASHER 3-3/8" X 3-1/2" X 1-1/8" HOLE X 3/8" THICK	50	1	53

USS Round Washer Galvanized

USS ROUND WASHER GALVANIZED



PART#	DESCRIPTION	PKG QTY	CTN QTY	CTN WT.
11001	3/16" USS ROUND WASHER GALVANIZED (1/4" ID X 9/16" OD X 3/64" THICK)	100	40	18
653	1/4" USS ROUND WASHER GALVANIZED (5/16" ID X 3/4" OD X 1/16" THICK)	100	40	22
11002	5/16" USS ROUND WASHER GALVANIZED (3/8" ID X 7/8" OD X 5/64" THICK)	100	40	56
249	3/8" USS ROUND WASHER GALVANIZED (7/16" ID X 1" OD X 5/64" THICK)	100	32	56
249A	3/8" USS ROUND WASHER GALVANIZED (7/16" ID X 1" OD X 5/64" THICK)	250	8	35
104	1/2" USS ROUND WASHER GALVANIZED (9/16" ID X 1-3/8" OD X 7/64" THICK)	50	16	32
11003	5/8" USS ROUND WASHER GALVANIZED (3/4" ID X 1-3/4" OD X 9/64" THICK)	100	4	31
11003A	5/8" USS ROUND WASHER GALVANIZED (3/4" ID X 1-3/4" OD X 9/64" THICK)	500	1	29
7017	3/4" USS ROUND WASHER GALVANIZED (7/8" ID X 2" OD X 5/32" THICK)	100	4	39
7015	7/8" USS ROUND WASHER GALVANIZED (15/16" ID X 2-1/4" OD X 11/64" THICK)	50	4	31
7011	1" USS ROUND WASHER GALVANIZED (1-1/16" ID X 2-1/2" OD X 11/64" THICK)	50	4	10
976100	1-1/4" x 3" USS ROUND WASHER GALVANIZED (1-3/8" ID X 3" OD X 11/64" THICK)	50	1	14

3" Diameter Washer

3" DIAMETER WASHER BOLT



PART#	DESCRIPTION	PKG QTY	CTN QTY	CTN WT.
12906	3" DIAMETER WASHER BOLT SIZE 1/2"	100	1	49
12907	3" DIAMETER WASHER BOLT SIZE 5/8"	100	1	48
12908	3" DIAMETER WASHER BOLT SIZE 3/4"	100	1	65
12909	3" DIAMETER WASHER BOLT SIZE 7/8"	100	1	47
12910	3" DIAMETER WASHER BOLT SIZE 1"	100	1	53

RECTANGULAR CURVED CASTED WASHER

RECTANGULAR CURVED CASTED WASHER



PART#	DESCRIPTION	PKG QTY	CTN QTY	CTN WT.
2880	2-1/4" X 3-1/2" RECTANGULAR CURVED CASTED WASHER FOR 3/4" BOLT	50	1	30
2881	3" X 4" RECTANGULAR CURVED CASTED WASHER FOR 7/8" BOLT	50	1	47
2882	3" X 4" RECTANGULAR CURVED CASTED WASHER FOR 1" BOLT	50	1	48

SQUARE BEVELED WASHER

SQUARE BEVELED WASHER



PART#	DESCRIPTION	PKG QTY	CTN QTY	CTN WT.
28895	1/2" SQUARE BEVELED WASHER	100	1	26
15901	5/8" SQUARE BEVELED WASHER	100	1	29
15902	3/4" SQUARE BEVELED WASHER	100	1	29



ROUND FLAT CASTED WASHER

ROUND FLAT CASTED WASHER

PART#	DESCRIPTION	PKG QTY	CTN QTY	CTN WT.
2890	3" ROUND FLAT CASTED WASHER FOR 3/4" BOLTS	100	1	45
2891	4" ROUND FLAT CASTED WASHER FOR 7/8" BOLTS	50	1	40
2892	4" ROUND FLAT CASTED WASHER FOR 1" BOLTS	50	1	40



SQUARE CURVED CASTED WASHER

SQUARE CURVED CASTED WASHER

PART#	DESCRIPTION	PKG QTY	CTN QTY	CTN WT.
2870	2-1/4" SQUARE CURVED CASTED WASHER FOR 5/8" BOLTS	200	1	60
2871	3" SQUARE CURVED CASTED WASHER FOR 5/8" BOLTS	100	1	58
2872	3" SQUARE CURVED CASTED WASHER FOR 3/4" BOLTS	100	1	56
2873	4" SQUARE CURVED CASTED WASHER FOR 3/4" BOLTS	40	1	48
2874	4" SQUARE CURVED CASTED WASHER FOR 7/8" BOLTS	40	1	47
2875	4" SQUARE CURVED CASTED WASHER FOR 1" BOLTS	40	1	47

Thermal Diffusion Galvanizing



CARRIAGE BOLT - TDG

CARRIAGE BOLT - TDG

PART#	DESCRIPTION	PKG QTY	CTN QTY	CTN WT.
77018	1/2" X 6" Carriage Bolt - TDG	50	1	17



ROUND WASHER - TDG

ROUND WASHER TERMAL DIFFUSION GALVANIZING

PART#	DESCRIPTION	PKG QTY	CTN QTY	CTN WT.
74003	5/8" X 1-3/4" ROUND WASHER - TDG	100	4	31
747017	3/4" X 2" ROUND WASHER - TDG	100	4	43



DOUBLE ARMING BOLT - TDG

DOUBLE ARMING BOLT - TDG

PART#	DESCRIPTION	PKG QTY	CTN QTY	CTN WT.
75956	5/8" X 16" Double Arming Bolt - TDG	25	1	42
75958	5/8" X 18" Double Arming Bolt - TDG	25	1	45
75960	5/8" X 20" Double Arming Bolt - TDG	25	1	49
75962	5/8" X 22" Double Arming Bolt - TDG	25	1	53
75964	5/8" X 24" Double Arming Bolt - TDG	25	1	55
75966	5/8" X 26" Double Arming Bolt - TDG	25	1	59
75968	5/8" X 28" Double Arming Bolt - TDG	25	1	65
75970	5/8" X 30" Double Arming Bolt - TDG	25	1	67



Allied Bolt Products LLC

OVAL EYEBOLT - TDG
5/8" OVAL EYEBOLT - TDG

PART#	DESCRIPTION	PKG QTY	CTN QTY	CTN WT.
74506	5/8" X 6" OVAL EYEBOLT - TDG	40	1	44
74508	5/8" X 8" OVAL EYEBOLT - TDG	25	1	32
74510	5/8" X 10" OVAL EYEBOLT - TDG	35	1	50
74512	5/8" X 12" OVAL EYEBOLT - TDG	35	1	54
74514	5/8" X 14" OVAL EYEBOLT - TDG	25	1	45
74516	5/8" X 16" OVAL EYEBOLT - TDG	25	1	46
74518	5/8" X 18" OVAL EYEBOLT - TDG	25	1	50
74520	5/8" X 20" OVAL EYEBOLT - TDG	25	1	55



Allied Bolt Products LLC

SQUARE CURVED WASHER - TDG
SQUARE CURVED WASHER - TDG

PART#	DESCRIPTION	PKG QTY	CTN QTY	CTN WT.
74555	2-1/2" X 2-1/2" CURVED WASHER - TDG WITH 11/16" HOLE (3/16" THICK)	50	4	62
74244	3" X 3" CURVED WASHER - TDG WITH 13/16" HOLE (1/4" THICK)	50	1	30



Allied Bolt Products LLC

SQUARE NUT - TDG
SQUARE NUT - TDG

PART#	DESCRIPTION	PKG QTY	CTN QTY	CTN WT.
78205	1/2" SQUARE NUT - TDG	100	1	6
78206	5/8" SQUARE NUT - TDG	100	1	11
78200	3/4" SQUARE NUT - TDG	100	1	16



Allied Bolt Products LLC

SQUARE WASHER - TDG
SQUARE WASHER - TDG

PART#	DESCRIPTION	PKG QTY	CTN QTY	CTN WT.
74501	1/8" X 2" SQUARE WASHER FOR 5/8" BOLT - TDG	100	2	48
74500	3/16" X 2-1/4" SQUARE WASHER FOR 5/8" BOLT - TDG	100	2	54
74550	3/16" X 2-1/4" SQUARE WASHER FOR 3/4" BOLT - TDG	250	1	60



Allied Bolt Products LLC

STRAIGHT GUY BOLT - TDG
STRAIGHT GUY BOLT - TDG

PART#	DESCRIPTION	PKG QTY	CTN QTY	CTN WT.
775805	5/8" X 10" STRAIGHT GUY BOLT - TDG	25	1	35
775806	5/8" X 12" STRAIGHT GUY BOLT - TDG	25	1	40
775807	5/8" X 14" STRAIGHT GUY BOLT - TDG	25	1	44
775808	5/8" X 16" STRAIGHT GUY BOLT - TDG	25	1	50
775809	5/8" X 18" STRAIGHT GUY BOLT - TDG	25	1	50



Allied Bolt Products LLC

SQUARE HEAD MACHINE BOLT WITH NUT - TDG

1/2" SQUARE HEAD MACHINE BOLT WITH NUT - TDG

PART#	DESCRIPTION	PKG QTY	CTN QTY	CTN WT.
71207	1/2" X 7" SQUARE HEAD MACHINE BOLT WITH NUT - TDG	50	1	0



Allied Bolt Products LLC

5/8" SQUARE HEAD MACHINE BOLT WITH NUT - TDG

PART#	DESCRIPTION	PKG QTY	CTN QTY	CTN WT.
75806	5/8" X 6" SQUARE HEAD MACHINE BOLT WITH NUT - TDG	50	1	0
75808	5/8" X 8" SQUARE HEAD MACHINE BOLT WITH NUT - TDG	50	1	41
75810	5/8" X 10" SQUARE HEAD MACHINE BOLT WITH NUT - TDG	50	1	53
75812	5/8" X 12" SQUARE HEAD MACHINE BOLT WITH NUT - TDG	50	1	56
75814	5/8" X 14" SQUARE HEAD MACHINE BOLT WITH NUT - TDG	50	1	64
75816	5/8" X 16" SQUARE HEAD MACHINE BOLT WITH NUT - TDG	25	1	36
75818	5/8" X 18" SQUARE HEAD MACHINE BOLT WITH NUT - TDG	25	1	40
75820	5/8" X 20" SQUARE HEAD MACHINE BOLT WITH NUT - TDG	25	1	43



Allied Bolt Products LLC

3/4" SQUARE HEAD MACHINE BOLT WITH NUT - TDG

PART#	DESCRIPTION	PKG QTY	CTN QTY	CTN WT.
73407	3/4" X 7" SQUARE HEAD MACHINE BOLT WITH NUT - TDG	50	1	0
73408	3/4" X 8" SQUARE HEAD MACHINE BOLT WITH NUT - TDG	40	1	48
73410	3/4" X 10" SQUARE HEAD MACHINE BOLT WITH NUT - TDG	50	1	72
73412	3/4" X 12" SQUARE HEAD MACHINE BOLT WITH NUT - TDG	25	1	43
73414	3/4" X 14" SQUARE HEAD MACHINE BOLT WITH NUT - TDG	25	1	49
73416	3/4" X 16" SQUARE HEAD MACHINE BOLT WITH NUT - TDG	25	1	52
73418	3/4" X 18" SQUARE HEAD MACHINE BOLT WITH NUT - TDG	20	1	47
73420	3/4" X 20" SQUARE HEAD MACHINE BOLT WITH NUT - TDG	25	1	63