

# RACK-A-TIERS<sup>®</sup>

SPECIALTY ELECTRICAL TOOLS



Introducing Over 25 New Products

**Turning Your Ideas  
Into Solutions**

TOOLS FOR ELECTRICIANS BY ELECTRICIANS

2011/2012

# TABLE OF CONTENTS

## WIRE MANAGEMENT TOOLS

Cable Caddy, Carts, Dolly, Truck, & Data Carts .....	16
EZ Roll – Wheeled Wire Dispenser .....	16
Jack-A-Tiers #75 & Spindles .....	18
MacRack 1, Caddy Macs, & Spool Mac .....	19
Rack' N Roller – Reel Dispenser .....	16
Rack-A-Tiers – Wire Dispenser .....	3
Ratchet Reel Mac .....	18
Reel Mac 60, 70, 80 & Spindles .....	18
Reel-End – Spool Repair .....	15
Spindle Extension Sets .....	16
Thomas Wheeler – Coil Spinner .....	17
Tug Wise – Reel Dispenser .....	15
Wire Tub – Coil Spinner for MC Cable, Flex & NMSC .....	17

## WIRE PULLING & ACCESSORIES

American Pull Buddy .....	30
Bag Pipers – Line Carriers .....	30
Barracuda Fishtapes .....	26
Bend-All – Cable Bender .....	13
Croc's – Needle Nose Wire Stripper & V-Cutter .....	13
LB Wire Guide .....	31
PulLee – Wire Guide .....	31
Ropematic – Rope and Fish Tape Puller .....	31
Snatch Strap – Wire Puller .....	30

## WIRE FISHING TOOLS

Coneheads .....	38
Fibersnakes .....	33
Flex Puller .....	38
Flexible Bits and Bumper Balls.....	34
Laserline .....	38
Magnetic Mouse .....	12
Plastic Coated Fiberfish, Glowfish & Attachments .....	32-33
Wire Python – Wire Fishing Tool .....	12

## LASER TOOLS AND LEVELS

Laser Chalk Bob IV .....	25
Laser Plumb Bob .....	25
Levels .....	24

## METERS

Infrared, Clamp, Multi, Thermometer & Camera .....	24
--	----

## PIPE AND CONDUIT BENDING

Hoppy Bender – Conduit Pipe Bender .....	9
Pipe Viper – Cold PVC Pipe Bender .....	8
Wacky Ruler Mat – Conduit Measuring Guide .....	8

## TOOL BELTS, ACCESSORIES, TOOL BOX AND OTHER STUFF

Bigg Lugg .....	26
Booty Pack – Disposable Boot Covers, Gloves, Respirators .....	28
Butt Pouches, Mini, Grande & Driller .....	11
LED Head-Lite Hat .....	28
Lift-n-Lok Tool Box .....	11
Racksy Knee Pads .....	28
Tool Pouches, Belts, and Suspenders .....	10
Tool Tray Carriers .....	11
Wrist Magnet .....	33

## COLORED RACKY BITS/SCREW DRIVERS AND ACCESSORIES

#0 Yellow Square .....	5
#1 Green Square .....	5
#1 Light Blue Phillips .....	5
#2 Blue Phillips .....	5
#2 Red Square .....	5
#3 Black Square .....	5
#4 Orange Square .....	5
4" & 6" Double Ended Bits – #2 Phillips & 1/4 slot .....	5
4" & 6" Double Ended Bits – #1 & #2 Square Drive .....	5
Lockhard #1 Square with Wings 4" & 6" .....	4
Magnetic Hex Bits, 1/4" , 5/16", 3/8", 7/16" & 1/2" .....	5
Magnetic Bit Holder .....	4
Magnetic Sleeve .....	4
Magnetizer/Demagnetizer .....	4
Picquic Screwdrivers .....	4
Quick Screw – Conduit set screw screwdriver .....	6
Robertson® Screwdrivers .....	6
Starter Kits – Includes bits and Display Case .....	5

## ELECTRICAL REFERENCE BOOKS

Dewalt & Ugly's Professional Reference Series .....	14
---	----

## CONNECTORS, ETC

KOK Series – 1/2" to 2" Plastic Knock Out Fillers .....	36
Level Jack – Low Voltage Data/com Mud Ring .....	37
Nut Blaster – Wire Connector Tools .....	29
Rapid Fire Connectors – 1/2" & 3/4" .....	37
Stand Off Bracket .....	37
Stud Buddies – Steel Stud Bushings .....	36
Super Box 4" – Fire Alarm Box .....	37
Tom Two Way 1/2" Connectors .....	37

## HOLE CUTTING

Hole Cutters, Extensions & Accessories .....	20-22
Multi-Function Hole Cutters .....	22
Step Drill Bits .....	22

## OTHER INNOVATIVE PRODUCTS

Hooker – Pipe Wrench Adapter .....	3
AC Sensors, Circuit Siren & Plug Master Circuit Tester .....	27
Bolt Template .....	26
Breaker Lok .....	28
Claw Level .....	39
Drillers Dust Bowl .....	23
Exploding Garbage Can .....	23
Panel Buddy – Knockout Kit .....	26
Plate Vise, Wire Pull Pro & Lumberlok .....	7
Pocket Kart – Reel Carrying Tool .....	16
ProGrabit Kit – Damaged Screw Remover .....	14
Qwik Lok – Locking Plug .....	6
Racky Strap – Utility Strap .....	36
Sluggo-Ox .....	26
Staple Shark .....	39
Tie Lips – Cable Tie Holder .....	29
V-Cutter .....	39
Wire Terminator .....	29

## AUGER BITS

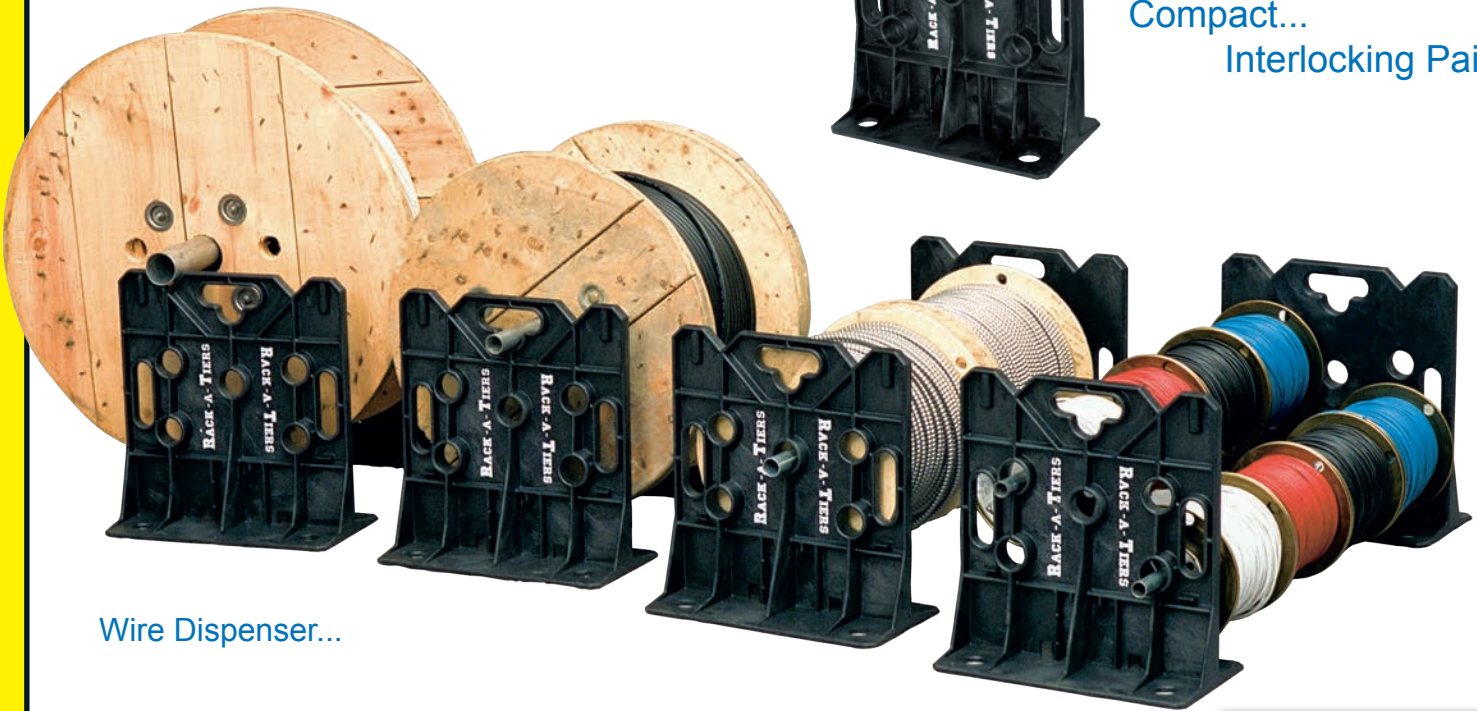
Nail Chipper, Ship Auger, Tri-Cut, Standard & Overdrive .....	35
---	----



# RACK-A-TIERS®

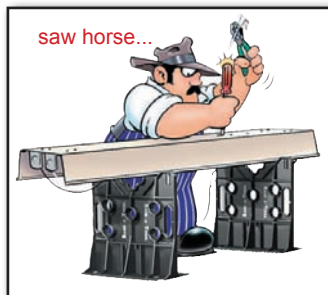
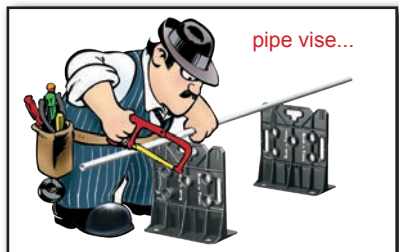
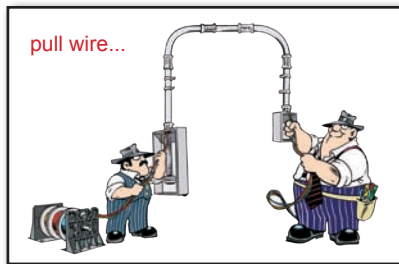
The ONE TOOL that does it all!

Compact...  
Interlocking Pairs



Wire Dispenser...

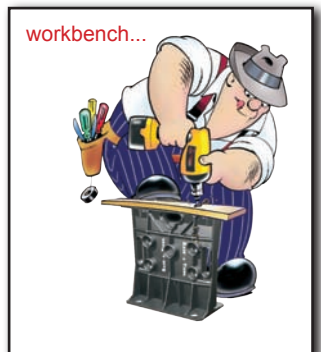
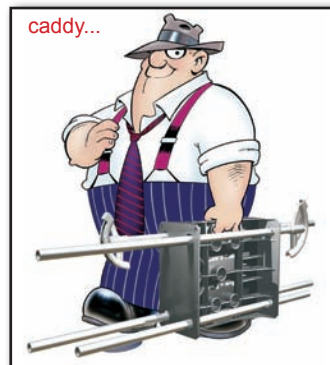
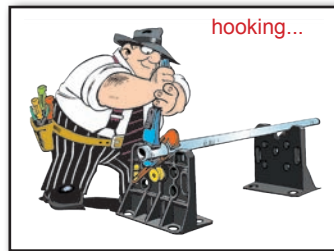
Part #11455



Versatile • Waterproof • Rustproof • Reliable • Rugged • Fast

**ONE SIZE Rack-A-Tiers FITS ALL**

Up to: 34" / .9m • 330 lb. / 150 kg wire reels



THE HOOKER **PIPE WRENCH ADAPTOR**

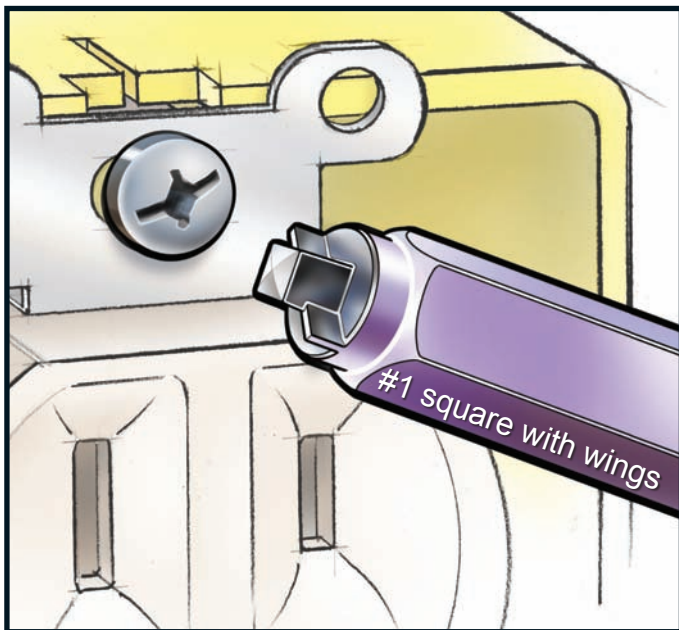
Every RACK-A-TIER needs a Hooker!!!  
"Turn your Rack-A-Tiers into a Pipe Vise"

Part #10455

NOTE: REQUIRES PIPE WRENCH 18" RIDGID® or equivalent fit. (not supplied)

Light  
Fast  
Simple  
Inexpensive





**lock  
HARD™**



**The peg that fits the hole**



**The lockHard locks in place  
and never strips.**

Part #72134P 4"  
#72136P 6"

## Magnetic Bit Holders

**Quick Change  
Magnetic Holder**



Part #72000

## Magnetizer/Demagnetizer

Magnetizes or demagnetizes  
driver bits, tools and small  
steel parts instantly!



Part #70988



This unique tool enhancement fits  
all of our quality bits, with an easy  
slip-on installation.

**Magnetic Sleeve**

Ideal every time you need one-handed  
operation. Do it with confidence and  
never lose your grip.

Part #72022

**PICQUIC®**



**Stubby**

- Solid, comfortable, high torque handle
- 6 High quality 1.3" length insert bits
- Ideal for work in close quarters

- Slim, comfortable and solid
- Corrosion proof magnetic alloy shank
- Legendary instant-bit-change

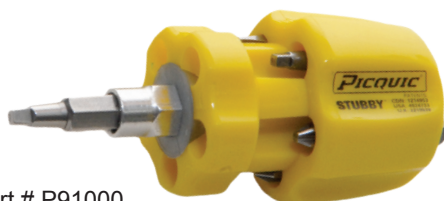


**Dash 7**

- 7 – 2" length, 1/4" Hex Powerbits
- Comes in 4 bright new colors



Part #P05001



Part # P91000

### SIXPAC Plus

- 7 – 3" length, 1/4" Hex Powerbits
- 11.5" total length

Part # P88001





# RACKY BITS

## COLOR CODED DRIVE BITS

Makes bit selection **FASTER**, **EASIER** and more **EFFICIENT!**



### Magnetic Hex Bits

- RED** 1/4" Hex Drive
  - YELLOW** 5/16" Hex Drive
  - BLUE** 3/8" Hex Drive
  - BROWN** 7/16" Hex Drive
  - BLACK** 1/2" Hex Drive
- Available in 2 1/2" & 6" Hex Bits

### Genuine ROBERTSON® Bits

- YELLOW** #0 Square Drive
- GREEN** #1 Square Drive
- RED** #2 Square Drive
- BLACK** #3 Square Drive
- ORANGE** #4 Square Drive

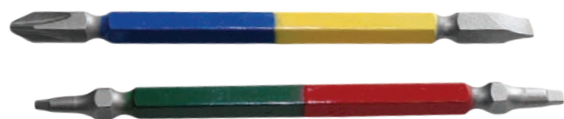
### Phillips Bits

- BLUE** #2 Phillips
- LIGHT BLUE** #1 Phillips



### 4" & 6" Double Ended Bits

- #2 Phillips
- 1/4" slot
- #1 square drive
- #2 square drive



Size and color availability as shown.

3", 4" & 6" drive bits

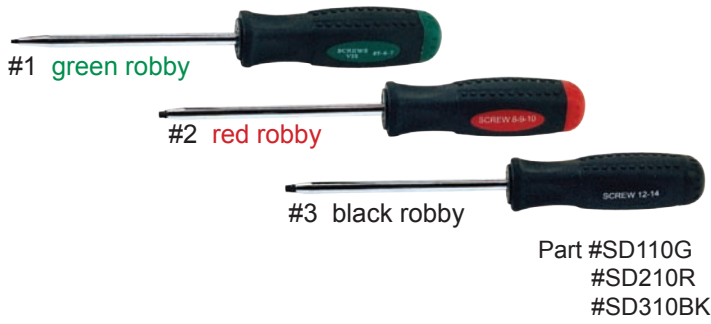
**COLOR** coding? It's so simple but it works. Racky Bits are easier to use and harder to lose and they make your job easier. If that's not enough, our genuine Robertson® RACKY BITS have hardened tips that fit better and last longer.



### Ordering Options:

1. Convenient blister cards
2. Bulk qty(s) for display case

Genuine  
**ROBERTSON®** Square drive  
**SCREW DRIVERS**

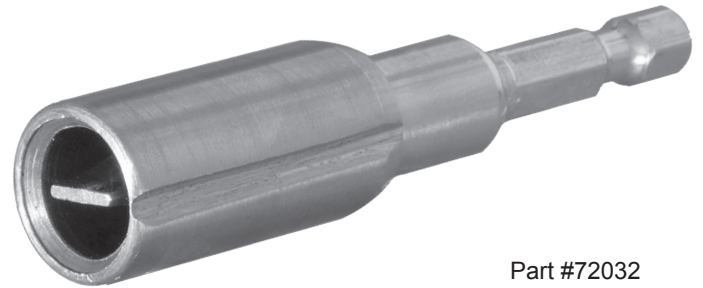


**Great Quality – Great Fit**

Robertson®, AKA Square Drive, has proven itself in Canada for 90 years. It is now popping up in the USA. The advantages of Square Drive are well documented and genuine. Why not use genuine Robertson® screw drivers for the best grip, best fit & most torque.

**QuickScrew**

The QUICK SCREW conduit set screw screwdriver bit. The FASTEST way to tighten conduit set screws.



**“Put this in your drill & give your wrist a rest.”**

**Tired of This?**



► *The CLICK you can Trust*

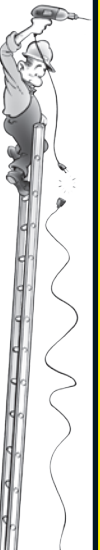
Guarantees extension cords and tools are LOCKED together. It is the TOUGHEST, STRONGEST, MOST RELIABLE, 120V - 15A CONNECTOR.



**Try This.**

- Qwik-Lok is the 'Must-Have' locking retro-fit /replacement connector for extension cords
- An outstanding end that eliminates tied, frayed, burned out or ruined cords and connectors
- Works with common 2 or 3 pronged plugs
- Eliminates need for 'twist-lock' devices
- Delivers consistent, reliable power at all times for demanding industries & trades

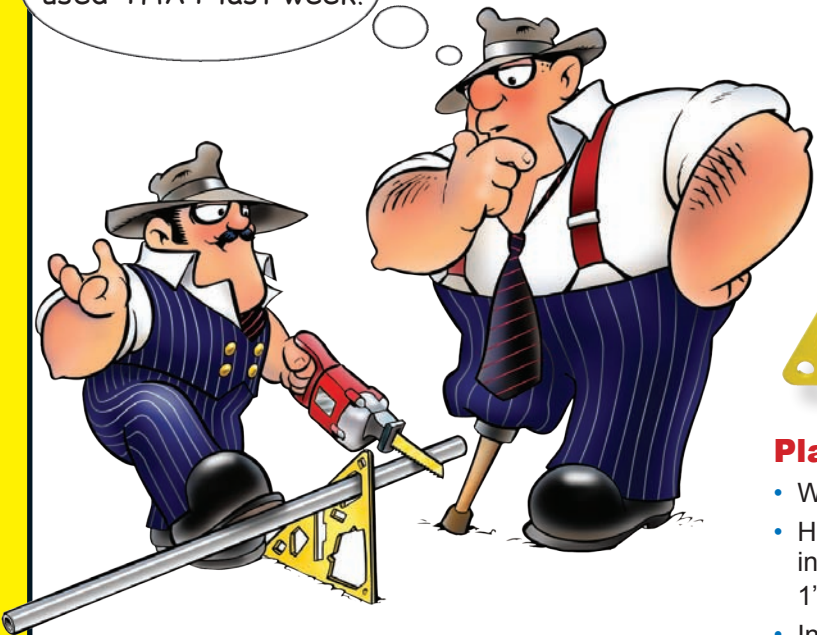
Part #97008





I sure could've used THAT last week!

# Made of Solid Steel



Part #13355



## Plate Vise

- Weight: 3.9 lbs.
- Holds several lumber sizes including but not limited to 1" x 2", 2" x 4", 2" x 6", & 4" x 4"
- Includes 12" Ruler



### Common Features

#### Tightly Holds:

- Plastic & Metal Pipe
- Conduit, Unistrut, Rebar
- Lumber & Dowels
- And Much More...

#### Lifts Material for Easy:

- Cutting
- Drilling
- Measuring
- And Tightening



## Wire Pull Pro Stands

- Weight: 14.5 lbs. each
- As a set can hold 1" to 6" conduit, up to 36" wire spools and up to 1,000 lbs.
- Sold separately

Part #13555



**NEW**

Part #13455



## Lumber Lok

- Weight 4.3 lbs
- Holds 1" x 4", 1" x 6", 2" x 2", 2" x 4", 2" x 6", 2" x 8", 2" x 10", 2" x 12", 4" x 4", 4" x 6", & 4" x 8"
- Includes 12" Ruler

**Makes Your Job:** Faster, More Accurate and MUCH SAFER



# The Pipe Viper™

**YOU CAN  
COLD BEND**

**RIGID PVC PIPE WITHOUT  
PIPE COLLAPSE OR FRACTURE**

One Size Fits ALL Knees & Heads!

## Cold PVC Pipe Bender

- NO HEAT GUNS
- NO HEAT BLANKETS
- FEWER PVC FITTINGS

**FASTER AND EASIER  
THAN CUTTING AND GLUING  
FACTORY FITTINGS**

### HOW?

INSERT THE SPRING INTO THE PIPE AND  
BEND ACROSS YOUR KNEE!!

### Definition of Cold

NOTE: *Pipe should be 50° F or warmer.*  
PVC pipe requires slight over bending which will  
"pop back" a few degrees upon the release of  
bending pressure.



- |        |             |
|--------|-------------|
| 1/2"   | Part #58050 |
| 3/4"   | Part #58075 |
| 1"     | Part #58100 |
| 1 1/4" | Part #58125 |
| 1 1/2" | Part #58150 |
| 2"     | Part #58200 |
| 2 1/2" | Part #58250 |
| 3"     | Part #58300 |
| 3 1/2" | Part #58350 |
| 4"     | Part #58400 |

**Don't drop  
your tape  
measure...  
drop your  
conduit,  
mark and  
bend.**

Includes electrical  
tables and symbols



60" Long x 8.5" Wide

**RACK-A-TIERS**  
**WACKY**

OHM'S LAW/POWER FORMULAS

MAXIMUM # OF CONDUCTORS IN ELECTRICAL METALLIC TUBING

Trade	1/2"	3/4"	1"	1 1/4"	1 1/2"	2"	2 1/2"	3"
Residential	1	1	1	1	1	1	1	1
Commercial	1	1	1	1	1	1	1	1
Industrial	1	1	1	1	1	1	1	1

METAL BONES

AC SINGLE PHASE MOTORS

ARCHITECTURAL SYMBOLS

ELECTRICAL SYMBOLS

USEFUL KNOTS

Don't get bent out of shape!  
Get the New Hoppy Bender

As Easy As 1,2,3

MARK, SET, BEND

Official, 1/4" & 1/2" sized available. 90° bends always perfect and done in a fraction of the time!

Part #31000



**Don't get bent  
out of shape!**

# Hoppy Bender



## Hoppy Bender's Unique Features

- A "Stop" attached to the Bender head used to create exact and repeatable bends every time.
- Simplified "Multipliers" engraved into the bender for placing the "Stop" prior to making offsets and four-point saddles.
- Special 22.5 and 45 degree marks engraved into the bender for placement of conduit bend marks as well as standard degree marks for stop placement, used together for bending three-point saddles without reversing the conduit in the shoe.
- Handy reference charts attached to the handle for locating bend marks.

1/2" Bender-Part #57050  
3/4" Bender-Part #57075

**STEP 1**  
Read table &  
**MARK** conduit



Desired offset	Mark conduit	Set stop on
3/8	3 3/4	10
1/2	4	8
3/4	6	
3/4	4 1/2	
1	6	6
1 1/4	7 1/2	
1 1/2	9	
1 1/2	6	
1 3/4	7	
2	8	
2 1/4	9	
2 1/2	10	
2 3/4	11	
3	12	
3	6	
3 1/4	6 1/2	
3 1/2	7	
3 3/4	7 1/2	
4	8	2
4 1/4	6 1/2	

**Example of 4" Offset or 4 Point Saddle**

1. **MARK** conduit at 8" intervals
2. **SET** stop on 2 multiplier
3. **BEND** conduit to stop

## Get the Amazing Hoppy Bender

Even the most complicated bends made

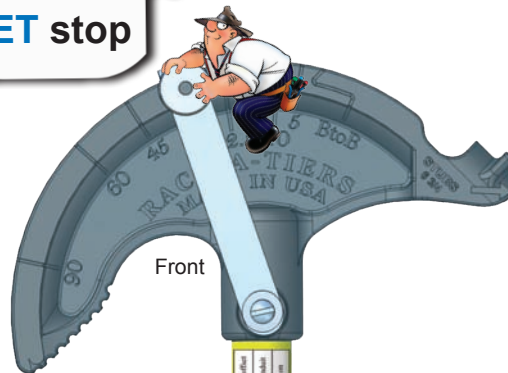
# As Easy As 1, 2, 3

## MARK, SET, BEND

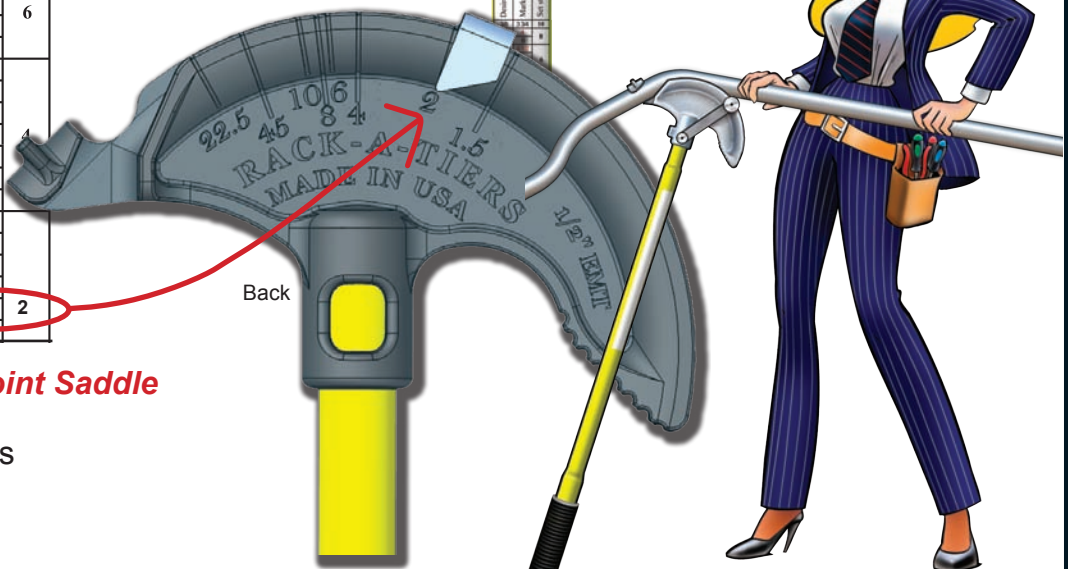
Offsets, 3 & 4 point saddles, 90° bends  
always perfect and done in a

## Fraction Of The Time!

**STEP 2**  
**SET** stop



**STEP 3**  
**BEND**  
conduit



# THE MOST INNOVATIVE TOOL BELTS AND BAGS ON THE MARKET



## Combo

Includes: Molded Support Belt, Electrician's tool pouch, large 9 pocket tool pouch, hammer holster and tape holder

Part #43241 -S  
#43242 -M  
#43243 -L  
#43244 -XL



1250 denier DuraTek fabric with high density nylon webbing around pocket openings.

Reinforced with bar-tack stitching and heavy duty metal rivets.



## Molded Air-Channel Support Belt



### Features:

- Air-Channel ventilation & contoured back support for maximum comfort
- Strengthened by a nylon web-core interior

Part #43401 -S  
#43402 -M  
#43403 -L  
#43404 -XL



## Molded Air-Channel Support Suspenders

### Features:

- Adjustable thick Molded Air-Channel Foam shoulder pads
- Heavy duty spring hooks that attach to the rings on the Molded Air-Channel belt
- Leather crossover divider
- 2" wide adjustable nylon straps

Part #43606



## Electrician's Tool Pouch

### Features:

- Divided main compartment
- 1 upper pocket
- 8 interior pockets
- 7 exterior slots & pockets
- 1 electrician's tape chain

Part #43201

## Large 9 Pocket Tool Pouch

### Features:

- Divided main compartment
- 1 upper pocket
- 2 large interior pockets
- 2 large hanging pockets



Part #43202



# Butt Pouch Pocket Pro

## Pocket Tool Holder



Driller

- Quick to put on AND COMFORTABLE!
- These tool pouches fit in your pocket
- Large snap loop for attaching to your belt if preferred
- Made of ballistic nylon
- Lightweight & durable



Mini

Grande



**NO BELT  
REQUIRED**



Mini Part #43015  
Grande Part #43095  
Driller Part #43110

### Small 25 Pocket Tray Tool Carrier

**Features:**

- 14 exterior pockets (5 with velcro closures)
- 14 interior compartments & pockets
- 1 7" x 5 1/2" twelve-compartment plastic tray
- 1 large exterior zip-top pocket
- 1 measuring tape clip
- Includes shoulder strap



Part #43707



**Features:**

- 29 exterior pockets (3 with velcro closures. 1 large clear pocket with velcro closure)
- 16 interior compartments & pockets
- 2 7" x 5 1/2" twelve-compartment plastic trays
- Includes shoulder strap

Part #43706



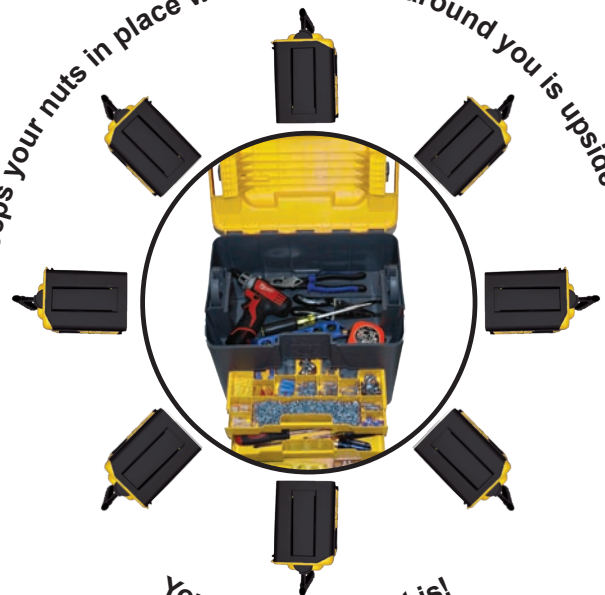
## A New Revolutionary Tool Box

### Lift-n-Lok Tool Box

- No mixing between drawer compartments
- Extremely strong
- Easy to operate
- Made in USA



Keeps your nuts in place when the world around you is upside down...



Your steel nuts that is!

Part #66536 – Yellow/Black



1. Capture



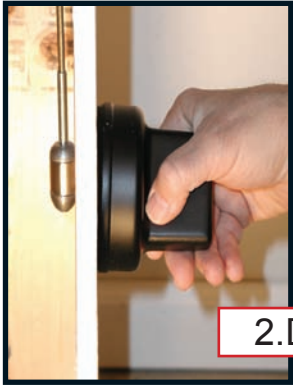
**THE WIRE PYTHON**  
MAGNETIC WIRE SNAKE

Wire Fishing Made Easy  
EVEN works through insulation!!

Flexible leader with magnet head



Hand paddle with powerful magnet



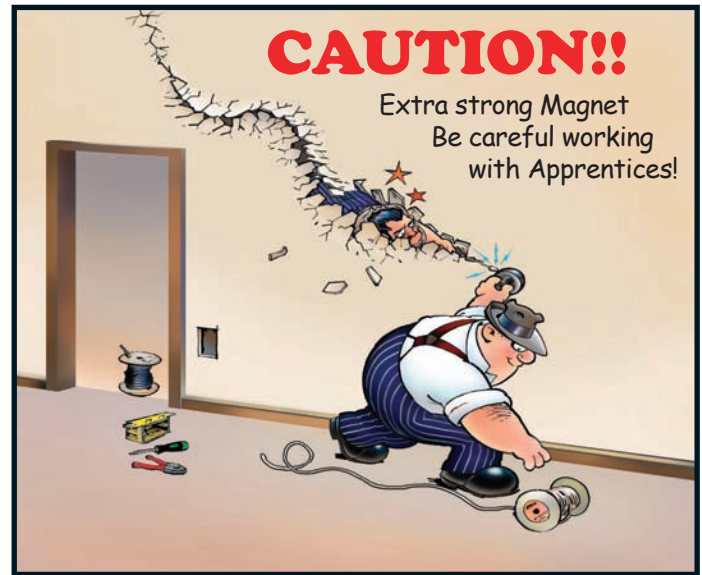
2. Drive

10' Ball Chain included



3. Extract

Also makes a great stud finder.



Any Fiberfish can easily be threaded onto the magnet head. This will help push through dense insulation and guide through fire-block drill holes.

Part #MAG6589

**YOU CAN'T TRAP THIS MOUSE!!!**

**MAGNETIC MOUSE**



**Features**

- Easily snake wire behind sheet rocked walls
- The original magnetic snaking device
- Do the job fast and clean every time
- Felt cloth pad keeps walls undamaged
- Small metal tabs require only a 1/2" hole



Not ready for the Python? Pick up a Magnetic Mouse. This little guy packs some big power and is easy to manoeuvre. Also minimizes the impact on your wallet.

Part #68991





## “Needle Nose Wire Strippers”

### CHECK OUT THE FEATURES:

- Needle nose tips
- NMSC stripper at the “nose” where it is easier to use inside boxes
- Strips conductor sizes from #10 down to #22 AWG (for telephone wire)
- Large cutting blades for easy general purpose cuts
- Barrel sleeve crimper near the pivot
- Ergonomic “hourglass” shaped handles for comfort & speed
- Glow-in-the-dark handles



Coming this year the V-Cutter see page 39

Croc's! What a beautiful stripper. Check out those curvaceous grips. Try out those needle nose tips. Dual action sheath stripper, crimper, oversized cutters, 22 gauge stripper as well. Croc's rock. Try 'em.

Part # 47000



Knuckle Buster

# BEND ALL

## Cable Bender

Finally...  
The Amazing Knuckle Saver from Rack-A-Tiers®

- Captures wire
- Bend inside enclosures to the right or left
- Bend to the front or back
- Your feeders will lie in the lugs



Machined from 6061 aircraft aluminum  
Fits a standard 1/2" ratchet.  
Fits #3 to 350 MCM conductors



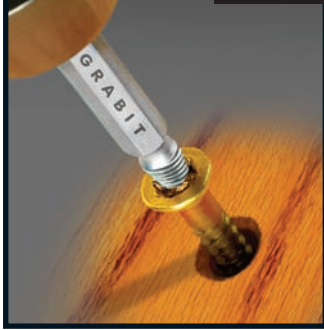
Piece of Cake

Part #77455

Ever give a meter base a knuckle sandwich? Too bad it was your own. Next time, defend yourself with the Bend All. Perfectly sized for 4/0, it takes the pain out of 200 amp services or sub feeders and conductors like it too. The Bend All makes micro adjustable bends without brutalizing the wire.

# proGrabit

Industrial Series



## Damaged Screw Remover

- Works on jagged, uneven and rough breaks
- Self centering tip, no walking
- Compatible with quick connect chuck systems
- Easy to use with 3/8" variable speed reversible drill
- Extracts screws up to 4 inches

	Screws	Bolts
Grabit #1	No. 4 - No. 6	No. 10 (5mm)
Grabit #2	No. 8 - No. 10	1/4" (6mm)



Rounded out screw heads, what a nightmare! Not anymore. Just drill out the damaged screw / bolt with one end of the Grabit, then flip it over and the "grab end" winds out the screw. MADE IN USA

Kit Part #72120

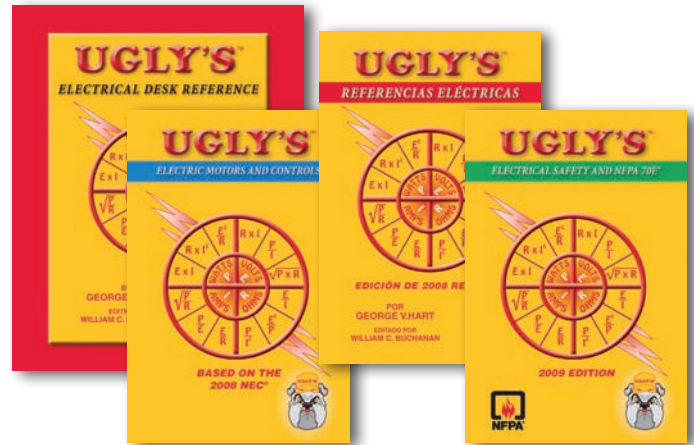


## The Original Electrical Reference Books Everyone Needs an Ugly's

### On the Job Reference

- Mathematical formulas
- National electrical code
- Wiring configurations
- Conduit bending
- Voltage drops
- Life saving first aid procedures
- Much, much more

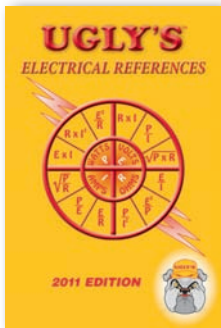
**All in an easy-to-read and easy-to-access format**



#### Part #'s

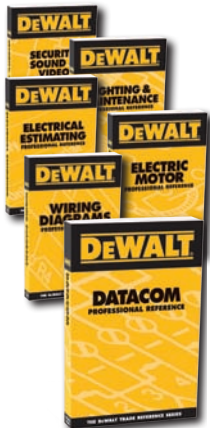
Electrical References	73215
Electrical Safety & NFPA 70E®	73214
Referencias Eléctricas	73217
Electric Motors & Controls	73216
Electrical Desk Reference	73213

Revised 2011 Edition



## DEWALT REFERENCE BOOKS

### Electrical Trade Series



On the job pocket reference books offer easy to read charts & detailed illustrations. The 4" x 6" size fits easily in a toolbox or pocket. Each book features over 350 pages of complete reference material.

#### Professional Reference Books

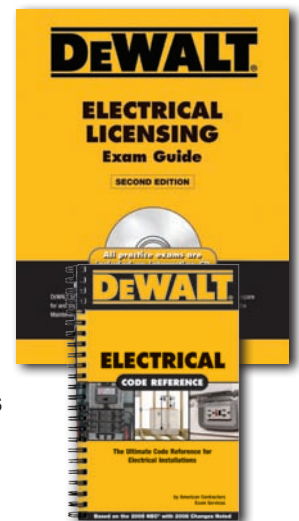
- Part #'s
- 73200—Electrical
  - 73205—Wiring Diagrams
  - 73203—Lighting & Maintenance
  - 73208—Electrical Estimating
  - 73201—Datacom
  - 73204—Electric Motor
  - 73210—Security, Sound & Video

#### Electrical Licensing Part #73206

Based on the 2011 International Code®  
Subjects include methods to improve test scores, strategies to prepare, study aids and tips, examination regulations, formulas and references, realistic sample exams, and answer keys with corresponding NEC® references.

#### Electrical Code Reference Part #73207

Based on the 2011 International Code®  
Illustrates hundreds of the most common code requirements, violations and installation concerns including: materials, notching and cutting, commercial hoods, combustion air openings, access and clearances, duct construction, mechanical ventilation.





# POCKET KART

## Save Your Fingertips!

### Features

- Light weight
- Swivelling handle
- Folds up easy
- Fits in pouches
- Fits in pockets
- Holds up to 200 lbs



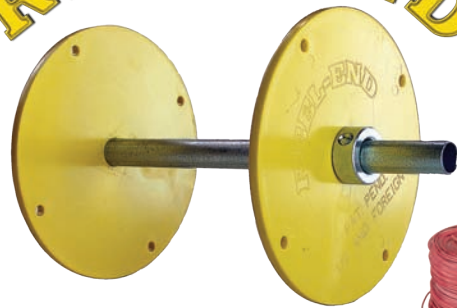
Part #56000



Use the Pocket Kart to carry wire reels of all sizes.



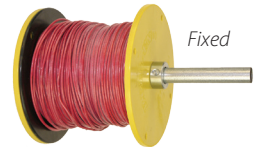
# REEL-END



### Features:

- Salvages "unusable" wire
- Reusable over and over
- Money maker

## "Wire Spool Repair"



Application - 6 1/2" diameter plastic spools

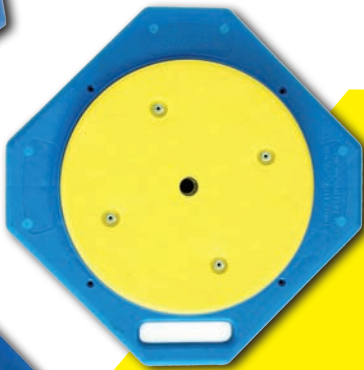
How many broken spools in your shop? A few? A bunch? There's gold in them thar rolls but how do you get at it? Fix them with the Reel-End.

Pays for itself with the first roll saved and it's reusable again and again. The Reel-End fits plastic spools #10 through #18 gauge. A real money maker.

Part #17455



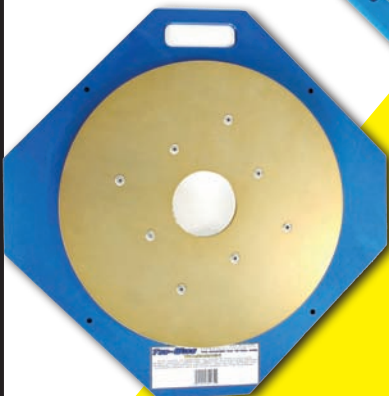
# TUG WISE



## Standard Model

### Features:

- Size: 15" x 15"
- Handles up to 500 lbs reels
- Works with wooden and plastic reels



## Deluxe Model

### Features:

- Size: 21.5" x 21.5"
- Handles up to 1500 lbs reels
- Made of 3/8" thick aluminum alloy
- Built to handle anything



4 Screw Holes for Easy Attachment

Standard #11931  
Deluxe #11932

Ever had a jack-stand kick out on you? An accident like that can cost you a lot of time, and towing a clunky reel trailer behind your vehicle is no faster! Why risk it? Simply attach the Tug-Wise to the base of your reel and be ready to pull cable instantly.

# RACK 'N ROLLER

Roll into the Future



Wire spools run on spring-loaded rollers, **no axle**.

Stands up for easy storage

**Advantages:**

- Spools can be loaded one at a time without disturbing the others
- Transport, dispense and store wire with no set up or breakdown
- No axles or loose parts
- Rugged USA construction



Length - 32"

Capacity - 4 to 5 rolls of THHN 10, 12, 14 gauge

Application - 6 1/2" diameter plastic spools

Part #12888

# E-Z ROLL WIRE RACK

E-Z ROLL WIRE RACK is the *ultra compact* / collapsible wheeled wire dispenser.

When you're ready to pull wire, wheel the E-Z ROLL into position and dispense wire directly from your pipe bender or 1" EMT.



Collapsible for easy storage & handling

**Features:**

- Rigid Steel Construction
- Light-weight Design
- Durable 'Caution Yellow' Finish
- Compact (fits in any job box)
- 150 lb. Load Tested
- Holds Reels up to 18"



Part #55455

## Cable Truck & Cable Caddy

- Constructed of rugged 1" steel tubing.
- Both are 43" tall with 7" rubber wheels
- Both can accommodate spools up to 16" wide on solid steel 1/2" axles.
- Cable Caddy features 6 axle positions for unlimited versatility.
- Cable Truck has 4 axle positions and a solid steel plate for transporting material.



Part #CC1200 Cable Caddy



Part #CT1100 Cable Truck

## Cable Dolly

- Cable Dolly features 8 - 12" wide spindles to accommodate a wide assortment of reel sizes. Durable locking casters are rated up to 1200 lb.
- Cable Dolly Jr. features 4 - 12" wide spindles. Part #CD3100 (Not Shown) Extensions also available.



Part #CD3000 Made to order



Part #CD3000-EXT 8 piece spindle extension set with tube connectors. (17" extensions)

## Cable Carts

- Comes with interchangeable 1" and 3/4" axles.
- Holds up to 30 spools of THHN
- Vertical racks swing forward for easy loading.
- Space for plywood work table on top.



Part #CC2000 Cable Cart Made to order



Part #CC2000D Cable Cart - Data Made to order

Dimensions: 43"H x 41 1/2"L x 28"W  
Shipping weight: 150 lbs.



# Wire Tub

## Wire Rewinder and Dispenser

### Features:

- 360° feed adjusts automatically
- 3-way adjustable center hub
- Removable top plate has a handle for *rewinding wire*
- Large 24" diameter capacity



Top plate on for rewinding



Salvaged wire ready for reinstallation

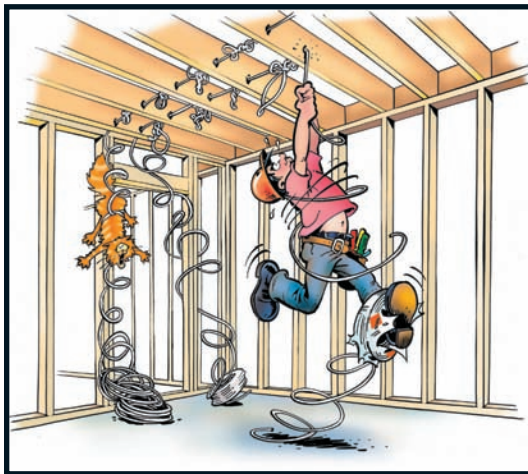
MC Cable



Flex

NMSC

Part #18455

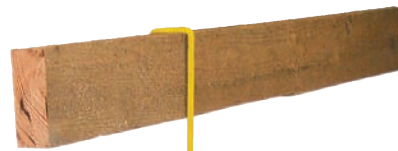


The Usual Way

## No Wire Spool? No Problem!

# THOMAS WHEELER

## Wire Spool®

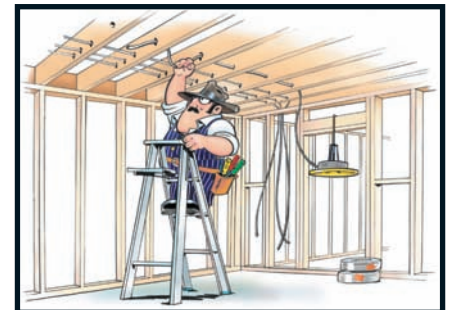


Hangs from a ladder



This easy-to-hang wire dispenser allows fast, twist-free NMSC, MC cable or Flex pulling.

- Affordable
- Dependable
- Saves Time
- Eliminates Waste
- No Maintenance
- Collapsible



A New Way

Most coil dispensers are too big, cumbersome and expensive. Not this one. The Thomas Wheeler knocks down and sets up in seconds, hangs on a 2x4, in the trusses, above tee bar or on a ladder. Light, simple, rugged and it really works. A great value.

Part #19455

# REEL MAG THE REAL JACK



**Reel Mac 60**— screw type telescoping reel jack for 26-56" diameter reels.



**Reel Mac 70**— screw-type telescoping reel jack for 46 to 96" diameter reels.

### Standard Features

- Self-lubricating Roller Bearings – no grease required
- Quick-action lock washer for fast positioning
- Fall Guard feature to reduce pinching
- One-bolt disassembly – no welding required for service

**Reel Mac 80**— heavy duty ratchet drive reel jack for reels up to 90" in diameter. Convenient, detachable ratchet handle stores in base when not in use.



**REEL MAC SPINDLES** Used with Reel Mac reel jacks. (Sold separately)



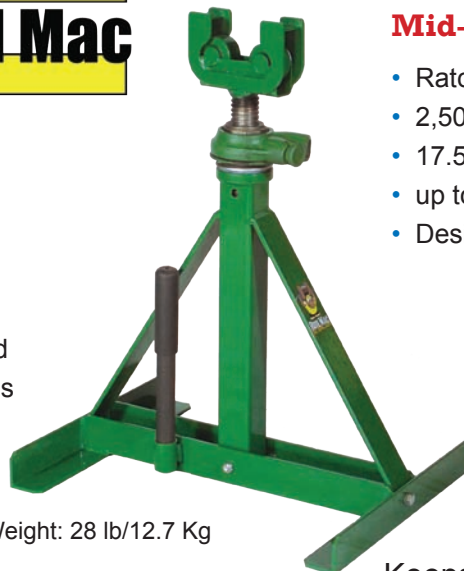
REEL MAC & JACK-A-TIER					Corresponding SPINDLES				
Description	Part No.	Reel Diameter	Capacity	Weight	Description	Part No.	Dimensions	Capacity	Weight
Reel Mac #60	11860	26-56"	2500lb.	27lb.	#61	11861	2 3/8" x 62"	5000lb.	39lb.
Reel Mac #70	11870	46-96"	2500lb.	46lb.	#71	11871	2 3/8" x 76"	5000lb.	47lb.
Reel Mac #80	11880	up to 90"	3750lb.	99lb.	#81	11881	3 1/2" x 100"	7500lb.	119lb.
Jack-A-Tiers #75	11875	46-92"	2500lb.	34lb.	#71	11871	2 3/8" x 76"	5000lb.	47lb.

Use this chart to select the right Reel Mac, Jack-A-Tiers or spindle for your needs

## Ratchet Reel Mac

### Standard Features

- Self-lubricating bearings
- Built-in handle storage
- Patent-pending safety head
- Use with Reel Mac Spindles



Weight: 28 lb/12.7 Kg

### Mid-Range Ratchet Reel Stand

- Ratchet design allows for easy lifting
- 2,500 lbs. capacity each
- 17.5" to 28" lifting range
- up to 55" diameter reels
- Designed for use with #350 & #500 wire reels



Keeps spindles securely in place

Part #11885



# THE MAC LINE

## Caddy Mac Features

- Accommodate wide range of spool sizes.
- Wire guides for smooth feeding from the spool.
- Patented spindle locking system - spindles stay put during transportation.
- 1/4" solid spindles are attached to Caddy Mac cart... no loose pieces.
- Spindles swing out to set position for convenient loading of wire spools.
- Spindles can be easily removed for the occasional use of larger spools.
- Spindles store in special loops... will not fall out even during transportation.
- Large 10" wheels



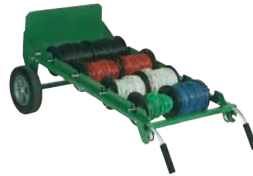
## MAC Rack 1



- 1,000 lb load capacity
- Eight bins of storage
- Arms fold easily with plunger release

Part #11917

## CADDY MAC #1



Part # 11901

Number of Spools	Max Spool Dia.	Load Capacity	Weight	Width	Additional Features
8-#10 awg. or 12-#12 awg.	7.5 in 19 cm	200 lb. 90 kg.	50 lb. 23 kg.	26 in 66 cm	Transports spools on spindles and works as a dolly. Wire is dispensed while laying flat.



## CADDY MAC #2

Part #11902

Number of Spools	Max Spool Dia	Load Capacity	Weight	Width	Additional Features
16-#10 awg. or 24-#12 awg.	7.5 in 19 cm	400 lb. 180 Kg.	64 lb. 29 kg.	26 in 66 cm	Folds up for compact storage

## CADDY MAC #4

Part #11904

Capacity	Weight	Width	Additional Features
6-500' spools - 8" diameter 6-2,500' spools - 16" diameter	67 lb. 30.5 kg.	27 in 69 cm	A large capacity cart, dispenses wire while laying flat.



## SPOOL MAC

Part #11900

### A Reel Transporter

Max Reel Width	Max Spool Dia.	Reel Capacity	Weight	Width	Additional Features
25 in 63.5 cm	40 in 101 cm	350 lb. 160 kg.	80 lb. 36.4 kg.	31.5 in 80 cm	All steel frame, easy set-up for cable dispensing. Compact storage.



Made in USA

Brick, Fiberglass, Plywood, Plastic, Roofing, Tile  
Concrete Block, Aluminum, Steel, Stone  
Sheetrock, Hard Woods, Softwoods  
Nonferrous Metals, Stainless Steel



Part #91000 Series

**NEW**

## Self-Feed Multi Purpose Hole Saws

- Hole Saws for cutting wood, laminates, plaster, OSB, MDF, fiberglass, chipboard, sheetrock, perforated brick, roofing tile stucco and more.
- Aggressive cutting action with TCT teeth and deep side gullets for fast plug removal.
- Max cutting depth is 2-1/4" sized from 5/8" to 6 1/4" carbide tipped.
- Works with all standard hole saw arbors, arbors - bits available.

## Dry Cutting Diamond Core Bits

- For holes over 1" to 6" in diameter, 10" cutting depth.
- Perfect for brick, block, flagstone, concrete pavers, slate, tarmac, roof tile, and other hard materials.
- The dry core bits works without water.
- Not for use on cured concrete or rebar.



Part #91000 Series

**The diamond core bits works without water.**





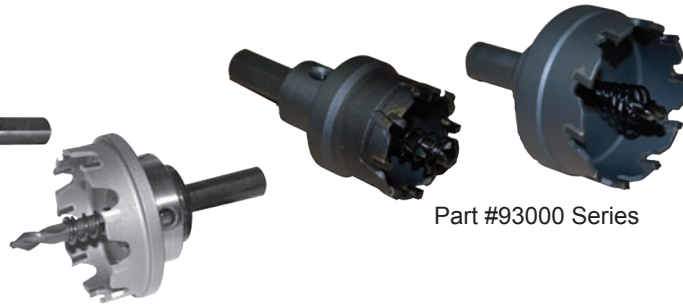
# LE THING COVERED!

Sheet for details

Aluminum, MDF Fibre Cement Board, Laminates, OSB, Stainless Steel, Hardie Board, Stucco, Soft Woods, Flagstone, Slate, Sheet Metal & More...



Part #92000 Series



Part #93000 Series

## Carbide Tipped Steel Cutters

We have High End and Low End Cutters

- Ejector spring
- Tapered center drill
- 5/8" up to 5 1/2"

## Multi Bit (Step Drills)

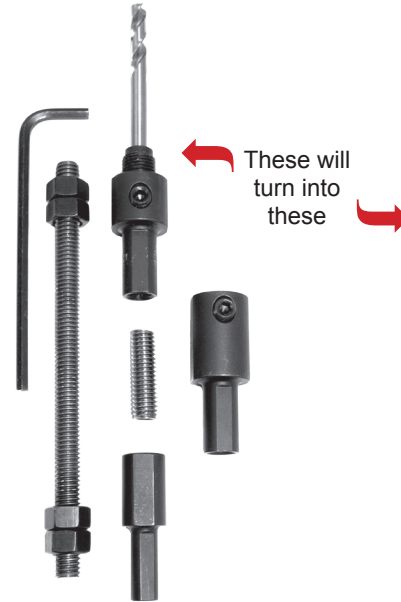


Hardened stepped Bits for clean cuts in sheet metal, electrical boxes, arborite, etc. Handy for creating knockouts.

Available in 1/8" to 1 1/2" sizes.

MLT1	1/8" - 1/2"	13 step
MLT3	1/4" - 3/4"	9 step
MLT4	3/16" - 7/8"	12 step
MLT5	7/16" - 1 1/8"	12 step
MLT 7	1/4" - 1 1/2"	11 step

## The JAVELIN All In One Extension



These will turn into these

## FULLY ADJUSTABLE HOLE CUTTER & AUGER EXTENSION KIT

Never get caught in a drilling extension jam again!

Just cut a 3/8"-16 threaded rod any length you need. The only extensions designed to drill over two feet.

Can also hold driver bits, nut drivers, drill bits, etc.

Pat # 7,802,948 Part #95000



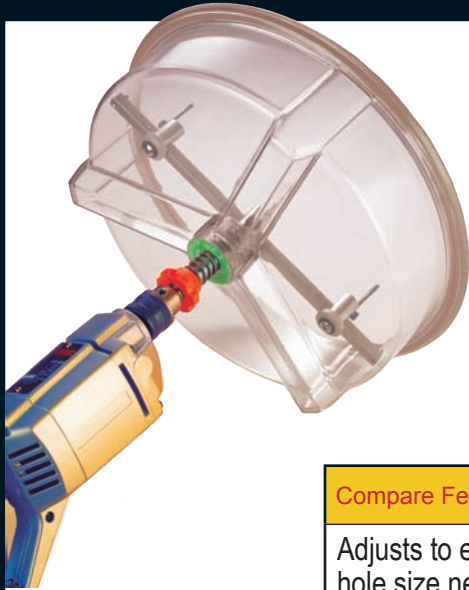
**Don't get RIPPED OFF!**  
Not all hole cutters are equal, let us find the right one for you.

# Multi-Function Hole Cutter

The dust has finally cleared...we've worked out the growing pains with the new improved nylon bushing.

## Cuts through:

- Plywood
- Sheetrock
- Fiberglass
- Fiber cement board
- Up to 20 GA. sheet metal
- Aluminum



Replacement Blades



Part #90-VH HSS  
#90-VT Carbide

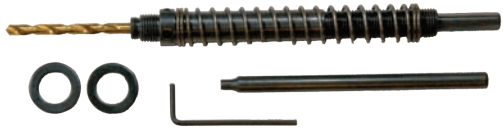
Compare Features	→ Other Hole Saw Kits	→ HOLE PRO
Adjusts to exact hole size needed	NO Van full of dull hole saws	YES 1 7/8" - 9" 1 7/8" - 12" 1 7/8" - 17"
Dust collector shield	NO Lady finds new contractor	YES Clean job
Designed to reduce kickback	NO Jaw breaker	YES Non-Jaw breaker
Economical replaceable blades	NO Sharpen a bunch of little teeth	YES Sharpen only two blades
Price	\$300.00	Less than half No-brainer!!!

Part #90200  
Part #90300  
Part #90400

Save your lungs! Cutting holes without protection can be hazardous to your health. Protect you & your crew with the HOLE PRO.

## Hole Saw Accessories

### Arbor extension



Part #90105

### Hole Saw Dust Shield

- Has a ABS shield that collects all the dust and shavings when using a hole saw.
- Has a 7 3/4" OD and 6 3/8" ID supporting a hole saw up to 6 1/4" in diameter and up to 2 1/2" cutting depth.
- Saw and vacuum adapter sold separately



Part #90103

### Arbor Hole Saw Adapter for all Hole Cutter Models

- Coverts any hole cutters for use with any hole saw
- Unique dual head design allows mounting 1/2"-20" or 5/8"-18" threaded hole saws



### Vacuum Adapter for all Hole Pro Dust Shields

- Reusable plug to re-seal shield hole
- Perfect addition to hole-pro shields, power series X & XL models
- Attaches to standard 1" power tool vacuum hose

Part #90101





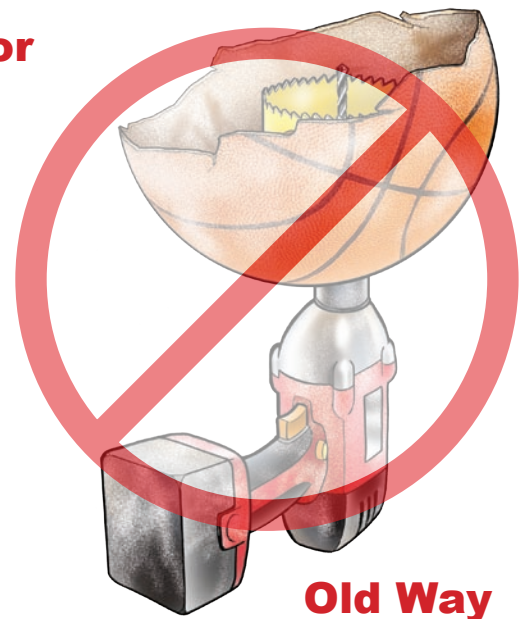
**Best Way**

## Save the Balls for the Court

HOLE SAW  
Dust Collector

Fits  
Hole Saws  
up to 8"

**New Improved  
with Nylon  
Bushing**



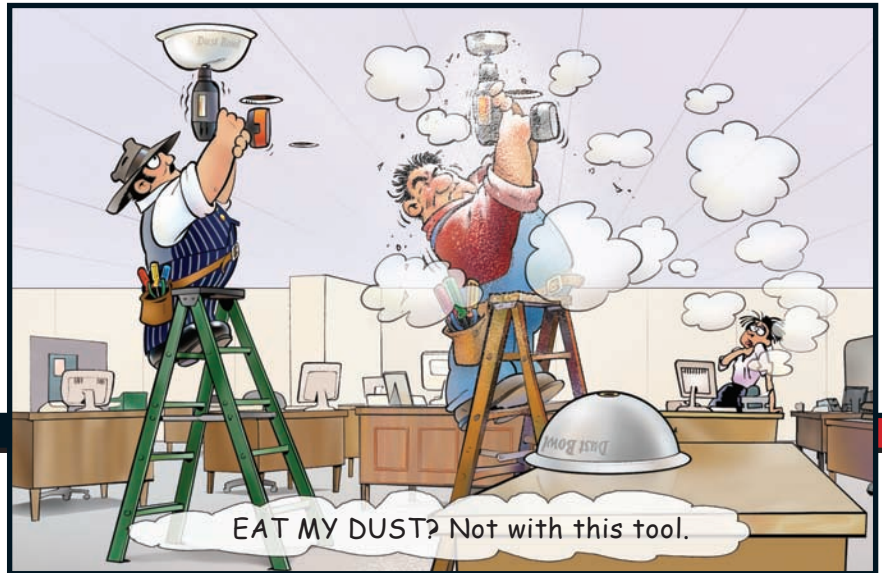
**Old Way**

Drill & saw are  
not included

Part #48000

## DRILLER'S Dust Bowl

You may enjoy a face full of drywall dust, but your customers might not. The flexible DRILLER'S DUST BOWL compresses against the work surface and traps all dust and debris as you drill. It fits your drill and hole saw without any adjustments. Put an end to 'unprotected hole sawing'.



EAT MY DUST? Not with this tool.



### Collapsible Trash Container

Featuring an internal support spring that "Springs into Action"

**Heavy Duty,  
Tear Resistant  
Polytuf Fabric**



Size:  
19" x 24" (open)  
1 1/2" x 24" (collapsed)

Who says you're a slob? Clean up your reputation with your own trash can. The Exploding Garbage Can will dazzle your customers, especially if you use it! Pops up and folds flat...ready when needed. You can also take one home for the garden.

Part #51000

# Rack-A-Tiers® is now a proud distributor of REED Instruments



## AC/DC Clamp Meter Part #9C201

- 3-3/4 digit LCD with high-speed, 42-segment bargraph
- Touch Zero and Data Hold functions
- Polarity and overload indications
- Continuity test
- Auto or manual ranging
- Auto power-off
- Clamp Meter



## AC/DC Multimeter Part #9ST202

- Auto and manual ranging
- Data Hold and Relative functions
- Temperature function: 760°F (400°C)
- Diode check and continuity functions
- Auto shut off

**NEW**



## Infrared Thermometer 12:1 Ratio Part #9ST8819

- User selectable °F or °C
- Built-in laser pointer identifies target area
- 12:1 Distance to Spot Size ratio



## Infrared Thermometer 50:1 Ratio Part #9ST8839

- User selectable °F or °C
- Built-in laser pointer identifies target area
- 50:1 Distance to Spot Size ratio



Part #9BS150

## Video Inspection Camera

- Detect and diagnose problems in hard to reach or confined areas-- even in total darkness or underwater
- High visibility 3.2" colour TFT LCD monitor with 320 x 240 pixel resolution
- 3.2' flexible gooseneck imager head retains configured shape and is waterproof (IP67)
- Gooseneck is expandable up to 30' with the optional cable extensions
- High visibility 10° adjustable LED lighting
- Camera and video functions allows you to capture high resolution
- JPG images and record live video for documentation purposes
- Transfer files to a computer via USB cable and optional 2GB SD memory card
- Power Supply: Rechargeable 3.7V, 2000mA lithium-ion battery

## The Straight Shot



Part #45303 3 precision vials  
0°, 45°, 90°

- CNC milled from 6061 aluminum extra large "VD" groove, straddles up to 10" diameter.
- Rare Earth magnets for extra holding.
- Water & Shock resistant.

Coming this year the Claw Level see page 39



## Jet Level

4 precision vials  
0°, 30°, 45°, 90°



Pat # D598,310 Part #45404





Risky

## For All Commercial, Industrial or Residential Installations

Great for laying out ceiling lights

Looking for a better way to lay out complex ceiling and high bays?

The **SELF LEVELING VERTICAL LASER** from RACK-A-TIERS® is the answer!



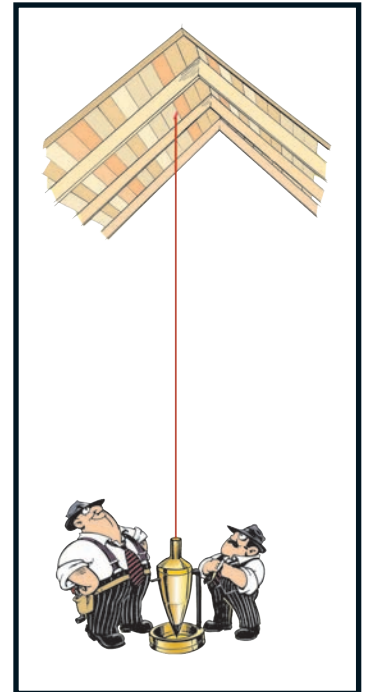
Fast, Safer



### Laser Plumb Bob™ - Vertical Dot

**Features:**

- Solid brass construction
- Convenient on/off switch
- Factory aligned laser module calibrated to precise 0.15° accuracy
- Magnetic damping for quick stabilization
- Self leveling and aligning (vertically)
- Durable plastic carry case
- Battery included



Part #88455

The **LASER CHALK BOB IV** enables you to do the lay out *on the ground*.

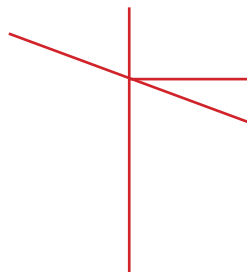
**Features:**

- Level method—pendulum system
- Battery life—16 hours
- Line laser wave length: 630–580nm
- Lines blink to indicate out-of-level range

The **Laser Chalk-Bob IV** gives you four reliable reference points:

- Two “chalk” lines on any horizontal or vertical surface (accurate to 1/4" @ 20 feet)
- Two “bob” points for pinpointing on ceiling or floor (accuracy: ±1/8" @ 16')

## LASER CHALK BOB IV



**Rotational Base**

The **LASER CHALK BOB IV** can now be rotated through 360° whether on a tripod or directly on the ground while attached to the rotational base.



Part #24402



## The Ultimate Ground Rod Driving Tool

SLUGGO-OX™ is the revolutionary new tool that's taking the industry by storm.

### Features

- Incredibly strong, made of 3" hot-rolled, heat-treated, hardened steel
- 3 1/2" bore to accept 3/4" and 5/8" ground rods
- 80% more striking surface
- One piece, light-weight (7lbs.)
- Yellow zinc chromate surface to deter rust



"Your turn to hold the ground rod, Rod - I think it's time we got a 'Sluggo-Ox!'"

Part #67119

## Panel Buddy Knockout Kit

### Tired of trying to remove Knockouts?

- Kit removes knockouts on Electrical, Security, Alarm and Datacom Panels
- Works with lipped and unlipped panels.

**NEW**



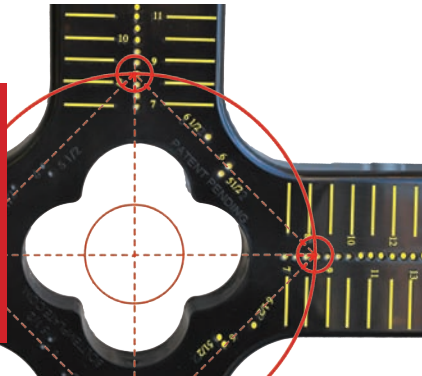
Part #7WBK100

## Bolt Template

41 Templates in One! Quick and Easy! Reusable! Set-Up in Minutes! Weather Resistant ABS Plastic.

For setting poles 8" - 24"

Select a hole saw that measures about 1/8" larger than the bolt to be used and drill the template at the selected easy centering divot mark.



Part #67441

## Barracuda Fishtape

A revolution in fishtape design. The first fishtape with an integrated pulling system that works! No more pliers, no more tripping over the case while you pull, no more kinks in your tape from pulling at awkward angles.



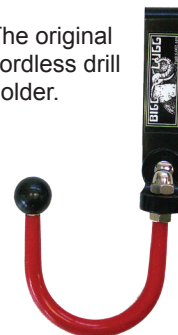
- Integrated Cam-Lock™ handle grabs onto the tape and pulls.
- The harder you pull, the tighter the cams grip.
- Let go of the handle and the cams release, allowing you to wind up the slack as you go.
- Winds and unwinds like a standard fishtape.

Patent #6416040

BRC100 -100' Carbon Steel Barracuda  
BRC200 -200' Carbon Steel Barracuda

## Bigg Lugg I

The original cordless drill holder.



Part #43001

## BIGG LUGG

### Bigg Lugg II

The next generation for personal tool carriers designed for cordless drills, air-nailers, paint cans, etc. (limit 10 lbs)



Part #43002



# P

## lugMaster™

**NEW**

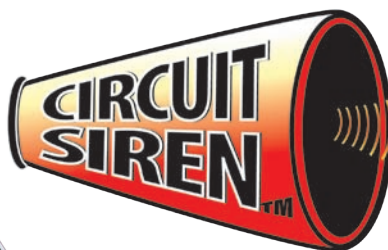
## Make Your Job Safer, Faster, Easier

### Features

- Combines full function dull-outlet circuit tester with 220V detection and multiple direction bubble level.
- Eliminates the need for multiple tools to test and straighten any wall outlets
- **Levels • Diagnostics • Terminal Covers**



Part #99102



## AUDIBLE CIRCUIT IDENTIFIER

### Features

- 3 to 130 volt AC & DC
- Built in polarity lights
- Handy adapter fittings
- Adjustable volume control

*SOUND* - It's Simple & Reliable



Includes **FREE** adapter Set

Part #99101



# Prevent Electrical Shock! ⚡

- Non-contact detection of 50-1000 VAC
- Troubleshoot electrical circuits
- A simple way to locate dangerous defective grounds
- Hand held device for determining presence or absence of 50-1000 Volts AC in insulated wires, wall receptacles, fuses, junction boxes and voltage carrying electrical systems
- Senses voltage without metallic contact
- Outstanding safety instruments that locate defective grounds, energized circuits, induced voltage
- 2 replaceable "AAA" alkaline batteries included

AC Sensor  
50-1000 Volts AC  
Bright red glow indicates AC voltage.



Part #99000



Ultimate AC Sensor  
50-1000 Volts AC  
Bright red glow indicates AC voltage AND audio alert.

Part #99001

Note: Before using the AC Sensor or Ultimate AC Sensor, always test it on a known live voltage source to insure proper operation.

# RACKSY PAD KNEE PADS

Save your knees, you'll need them later!



## Racksy Pads With Gel Implants

Sturdy and so comfortable, you'll actually wear them. Velcro/elastic straps make these knee pads easy to put on and take off.



So comfortable, you'll never want to get up!

Part #66455

# BOOTY PACK

Keepin' It Clean

Leave a clean impression, not your dirty tracks with these slip resistant plastic booties, comfy gloves & respirator.



### Kit Includes

- 6 pairs of booties
- 4 pairs of nitrile gloves
- 4 pairs of vinyl gloves
- 3-N95 Respirator

Booty Kit #47099

Booties only sold separately #47009B

# Head-LITE Hat



"Which breaker is for our hats?"



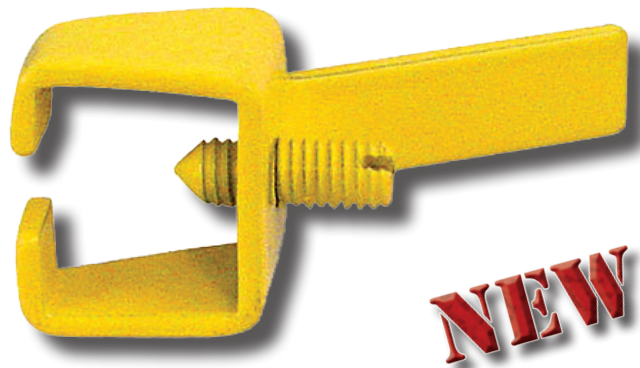
## Hands-Free Flashlight

- Powerful bulb illuminates up to 40 ft
- Batteries included
- Bright efficient L.E.D.

The Head-Lite Hat is great for jogging, hiking, walking the dog, etc. Heck, some people are even using them for work. They're the ones who are tired of holding a flashlight in their teeth or under their chin when working in tight places, attics, crawl spaces... All the benefits of a flashlight and a hat in one.

Part #16000BL  
#16000MO

# Breaker Lok



**NEW**

The only breaker lock you need.  
Fits most manufacturer's breakers.

Also works on standard toggle switches.

Part #75000



# WIRE TERMINATOR

From the makers of the original Smart Box



**Tired of looking for buried wires?**  
**Use the TERMINATOR!**

Inform Trades where to pass wire through drywall.

- Terminate wire tails for vanity lights, sconces and under cabinet lighting.
- Leave message for drywall installer.
- Removes unwanted holes and uncertainty during finish work.
- Labor saver, time saver all-in-one.

Part #32000



## The NUT BLASTER

Universal Wire Connector Tools

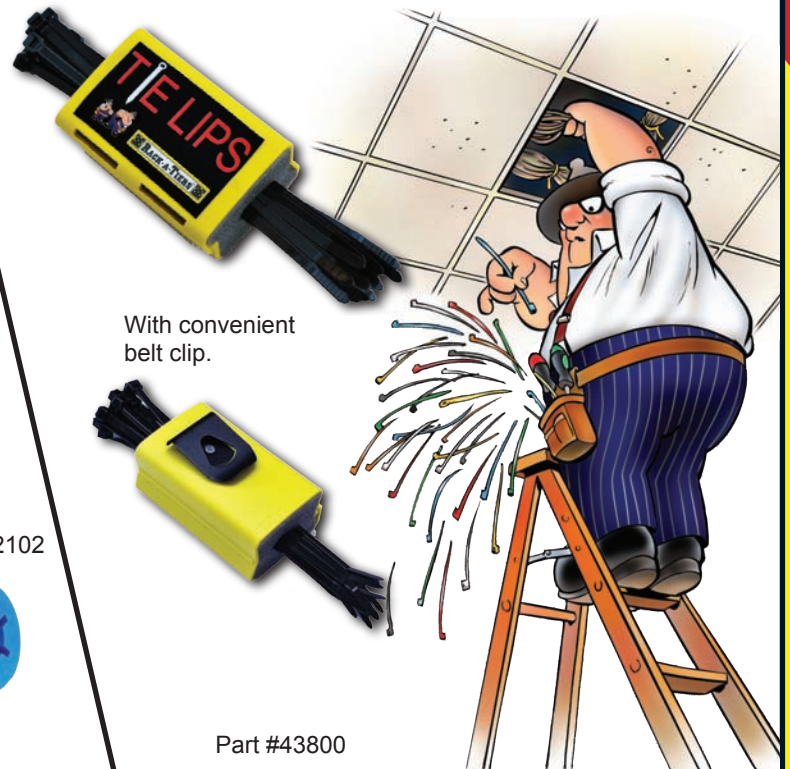
- **Fast, Easy Installation**
- Prevents sore fingers and cramping hands
- Fits all brands; yellow, tan, red, grey & blue

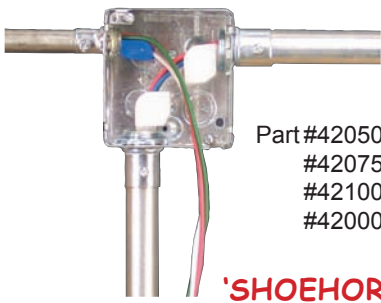
*"If our batteries hold up we'll have these in by lunch"*



## TIE LIPS

**Want to spend more time installing & less time picking up?**





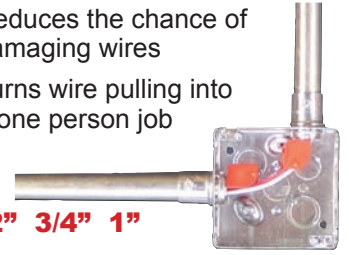
Part #42050-1/2"  
 #42075-3/4"  
 #42100-1"  
 #42000-Multi-Pack

# The All American Pull Buddy



'SHOEHORNS FOR YOUR WIRE' Three Sizes Available: 1/2" 3/4" 1"

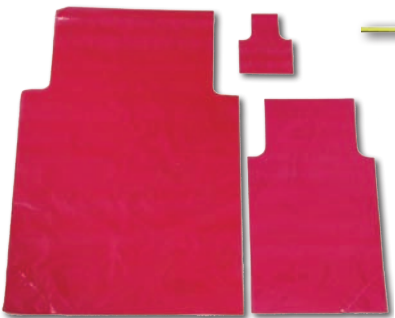
- Reduces Time and Labour
- Reduces the chance of damaging wires
- Turns wire pulling into a one person job



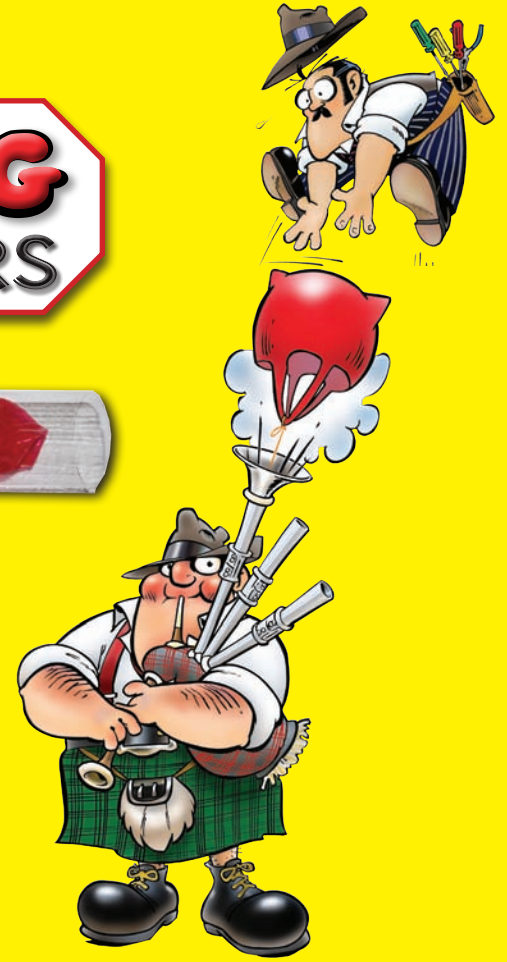
Two-person wire pulls can be costly. So can cut wires and short circuits. The All American Pull Buddy turns one set of hands into a 'crew'. Fast, easy to use and reusable. Why not protect the conductors on all your pulls?

**It's simple...**  
**Foam line carriers are expensive**  
**Bag-Pipers are cheaper and work much better**

# BAG PIPERS



3 sizes available to fit conduit 1/2" up to 6"  
 Part #BP05-125 (sm) 1/2" x 1 1/4"  
 #BP150-40 (med) 1 1/2" x 4"  
 #BP20-60 (lg) 2" x 6"  
 #BP05-600 (multi-pack) 1/2" - 6"

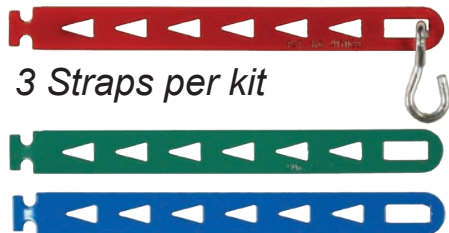


# SNATCH STRAP

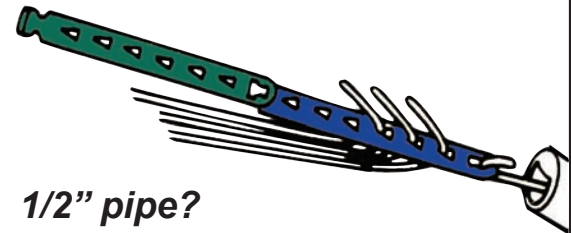
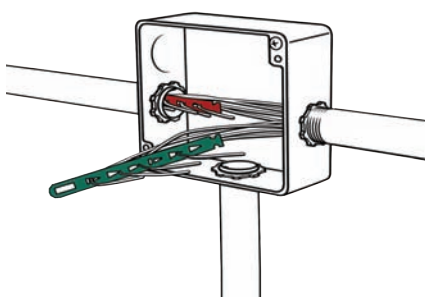
## Wire Puller

Fast attachment for conduit pulls

No stripping or taping required



3 Straps per kit



1/2" pipe?  
 90° bends?  
**Fits Easily**

Part #69455

Time is money and when you think about it, a lot of time is spent stripping, taping and untaping wire for fishtape pulls. The SNATCH STRAP gives you back this time. By staggering the wire, you can pull more conductors with less effort. Plus SNATCH STRAPS can be daisy chained; you can easily drop wire groups at boxes along the pull. Color coded for easy circuit and phase identification.





**ROPEMATIC PRO**  
THE SMART WAY TO PULL



**"The Smart Way to Pull Rope"**

**STOP** hurting hands and wrists.  
**STOP** breaking expensive fishtape.

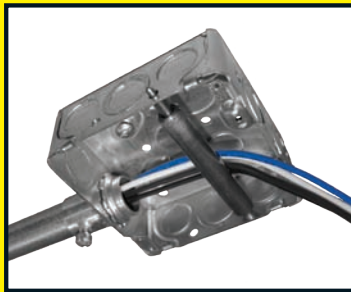
- Can pull most ropes and fish tapes
- Pull more efficiently, faster & safer
- Saves an average of 30 minutes based on a 75' pull
- Use both hands ergonomically for maximum pulling strength without the pain



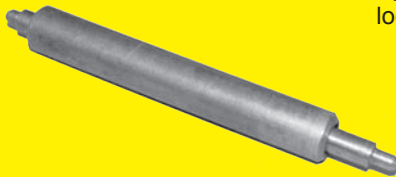
Part #42400



**Slim but strong steel roller fits in your box for smooth and controlled wire pulling!**



Spring loaded tips keep it locked in place



Part #41100  
Pat #7,323,637

**NEW**

## LB Wire Guide

**'SHOE HORN' FOR 2" LB'S**

### Features

- For PVC LB fittings & is adaptable to most metal LB's
- One-person faster conductor installation
- Installs in two positions to fit both 'Ends' of the LB



Part #42200

Two hundred amp services (3/0 wire) can be hard on your knuckles. The LB Wire Guide puts the wire in the pipe & leaves the skin on your fingers.

# Plastic Coated Fiberfish & Glowfish

Our Fiberfish and Glowfish rods with a durable plastic coating offer the same great performance with no risk of splintering or slivering of the fiberglass.

## PLASTIC COATED FIBERFISH II

### 3/16" Diameter orange rods.

The most versatile of the Fiberfish with our new plastic coating process. Perfect for a wide range of installation situations and challenges.

#### Kits

- PCF207 Fiberfish Kit contains: 1 - 6' B/F, 4 - 6' M/F w/ tips  
 PCF208 3' Fiberfish Kit contains: 1 - 3' B/F, 7- 3' M/F rods w/ tips  
 PCF230 "FourPack" contains: 1 - 3' B/F, 3 - 3' M/F, tip, and FishHook in vinyl pouch

#### Replacement Rods

- PCF206 6' Bullnose/Female (B/F) rod  
 PCF210 6' Male/Female (M/F) rod  
 PCF214 3' Bullnose/Female (B/F) rod  
 PCF215 3' Male/Female (M/F) rod



## PLASTIC COATED GLOWFISH II

### 5/32" Diameter luminous rods.

Super flexible glow-in-the-dark rods with our new plastic coating process. Great for tight jobs. The handy clear carry case keeps them constantly "charged" and ready.

#### Kits

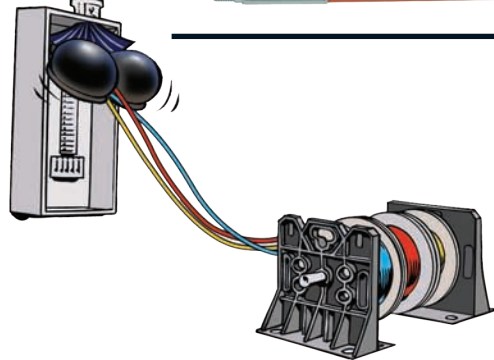
- GLF407 Glowfish Kit contains: 1 - 6' B/F, 4 - 6' M/F w/ tips  
 GLF408 3' Glowfish Kit contains: 1 - 3' B/F, 7- 3' M/F rods w/ tips

#### Replacement Rods

- GLF403 6' Bullnose/Bullnose (B/B) rod  
 GLF406 6' Bullnose/Female (B/F) rod  
 GLF410 6' Male/Female (M/F) rod  
 GLF414 3' Bullnose/Female (B/F) rod  
 GLF415 3' Male/Female (M/F) rod



STOP!!!  
STOP!!!



## FIBERFISH

### 1/4" Diameter yellow rods.

The original Fiberfish rods. Stiff enough for drop ceilings and flexible enough for insulated walls. Heavy duty rods for tough pulls.



#### Kits

- FIB107 Fiberfish Kit contains: 1 - 6' B/F, 2 - 6' M/F, and 2 - 3' M/F rods w/ tips  
 FIB108 3' Fiberfish Kit contains: 1 - 3' B/F, 5 - 3' M/F rods w/ tips  
 FIB130 "FourPack" contains: 1 - 3' B/F, 3 - 3' M/F, tip, and FishHook in vinyl pouch

#### Replacement Rods

- FIB103 6' Bullnose/Female (B/F) rod  
 FIB113 6' Male/Female (M/F) rod  
 FIB110 3' Bullnose/Female (B/F) rod  
 FIB114 3' Male/Female (M/F) rod

## Attachments

We've re-engineered the attachments to fit both the 3/16" rods and the 5/32" rods. They will still be compatible with all existing parts in the field, and the cost remains the same.

**FishHook** - Use to retrieve or snag wire & cable.

**Directional Tool** - Offset bend helps guide the Fiberfish around obstructions in walls.

**Magnet Head** - Used with Fish Finder or to catch the ball chain inside wall cavities.

**Pull Ring** - Used to attach multiple wires for larger pulls.

**Ball Chain** - Attach to Fiberfish for interior wall pulls - can be retrieved through small access hole in wall with magnet or Flex-Fish.

**Wisp Head** - Use over suspended ceilings - won't catch on T-bars.

**Screw Tip** - Screw into the end of small communication wires for faster and easier pulls.

## Attachments & Accessories



### Fiberfish Attachments

(1/4" rods)

- FIB101 Replacement Tip  
 FIB105 Fish Hook  
 FIB111 Directional Tool  
 FIB112 Magnet Head  
 FIB118 Pull Ring  
 FIB119 Ball Chain  
 FIB122 Wisp Head  
 FIB125 Screw Tip

### Universal Attachments

for ALL (3/16" rods) AND (5/32" rods)

- FIB505 Fish Hook  
 FIB511 Directional Tool  
 FIB512 Magnet Head  
 FIB518 Pull Ring  
 FIB519 Ball Chain  
 FIB522 Wisp Head  
 FIB525 Screw Tip



# Fibersnakes

Fibersnake Fishtapes and Rodders are designed for use in conduit. The reinforced fiberglass core is jacketed with a plastic coating for superior flexibility and durability. Non-conductive, so it's great for conduit with existing wiring. Rust-proof brass tips and fittings.

## 3/16" FIBERSNAKE

FIBT50 50' Fibersnake  
 FIBT100 100' Fibersnake  
 FIBT150 150' Fibersnake  
 FIBT200 200' Fibersnake  
 FIBT250 250' Fibersnake  
 FIBT300 300' Fibersnake

## 1/4" FIBERSNAKE

FIBR200 200' Fibersnake  
 FIBR250 250' Fibersnake  
 FIBR300 300' Fibersnake  
 FIBR350 350' Fibersnake  
 FIBR400 400' Fibersnake  
 FIBR450 450' Fibersnake  
 FIBR500 500' Fibersnake  
 FIBR550 550' Fibersnake  
 FIBR600 600' Fibersnake

## 5/16" FIBERSNAKE

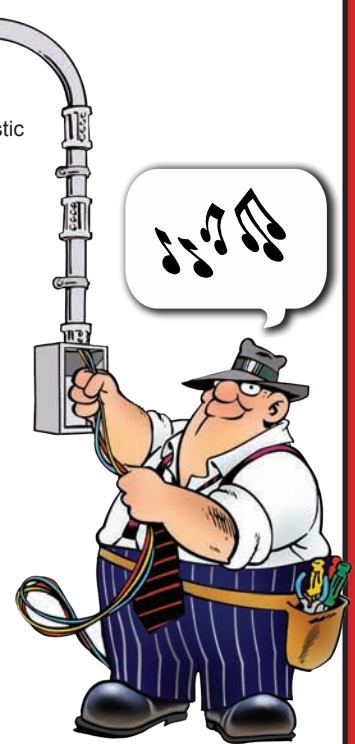
Fibersnakes and Replacement Rodders are available in 400'-1000' Fibersnakes Part # FIBL400-FIBL1000 Replacement Rodder Part # RL400-RL1000

Rodder Diameter	Recommended conduit sizes (in inches)	Maximum Length
(FIBT) 3/16"	1/2, 3/4, 1, 1 1/4	300'
(FIBR) 1/4"	1, 1 1/4, 1 1/2, 2, 2 1/2	600'
(FIBL) 5/16"	1 1/2, 2, 2 1/2, 3, 3 1/2, 4	1000'

RT50 50' Replacement Rodder only  
 RT100 100' Replacement Rodder only  
 RT150 150' Replacement Rodder only  
 RT200 200' Replacement Rodder only  
 RT250 250' Replacement Rodder only  
 RT300 300' Replacement Rodder only

RR200 200' Replacement Rodder only  
 RR250 250' Replacement Rodder only  
 RR300 300' Replacement Rodder only  
 RR350 350' Replacement Rodder only  
 RR400 400' Replacement Rodder only  
 RR450 450' Replacement Rodder only  
 RR500 500' Replacement Rodder only  
 RR550 550' Replacement Rodder only  
 RR600 600' Replacement Rodder only

Our 5/16" Fibersnakes are made to order. Returns due to the wrong size being ordered will **NOT** be accepted. Please order carefully.



Fibersnakes are designed to pull fish line or rope. They are not recommended for pulling wire and cable.

**Note:** We do not replace fibersnakes broken due to improper use. However, we will send a repair kit at no extra charge.



## Super Wrist Magnet

- Holds any steel parts
- Comfortable to wear all day
- Made of rugged 2 mil neoprene
- Waterproof
- Adjustable band fits virtually any wrist size



Part #WM396

## Contractor Packs

### Installer Pack

Fiberfish II Kit; 1/2"x72" Auger Piranhbit; 3/8"x72" HSS Piranhbit; 20' Fiberglass Telepole; Attachment Kit; Carry Case.

Part #CON100 Installer Kit



### Contractor Pack

Fiberfish II Kit; 1/2"x72" Auger Piranhbit; 3/8"x72" HSS Piranhbit; 20' Fiberglass Telepole; Attachment Kit; Wisp Head; Flex Fish; Steering Guide; 1" Auger Bit; Carry Case.

Part #CON200 Contractor Pack



## Attachment Kit

Contains: FishHook, Directional Tool, Magnet Head, Pull Ring, Ball Chain, and 2 replacement tips. Stored in convenient vinyl pouch.



FIB120 Fiberfish Attachment Kit (1/4" rods)  
 FIB520 Universal Attachment Kit for ALL (3/16" rods) & (5/32" rods)

## Master Attachment Kit

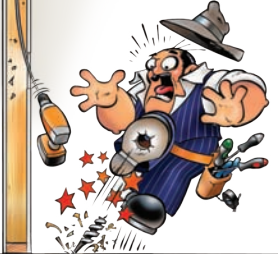
Contains same as above plus: Wisp Head, Screw Tip, Flex-Fish



FIB140 Fiberfish Master Attachment Kit (1/4" rods)  
 FIB540 Universal Master Attachment Kit for ALL (3/16" rods) & (5/32" rods)

**Before**

OUCH!!!  
...to the LEFT a foot. Not  
RIGHT...into my foot!



Gee, I sure  
wish I had a  
Bumper Ball!



# BUMPER BALLS

These balls will keep  
your bits centered.



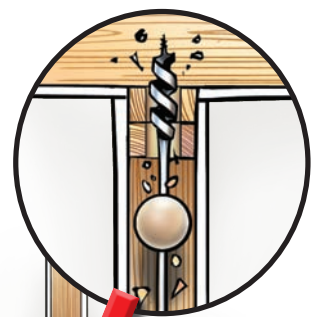
**No more...**

- Bit walking
- Nail hitting
- Wall patching
- Carpet replacing

Fits all 3/16" shaft  
auger bits

Kit includes 1 each of  
1 3/4" & 2 1/4" Balls

Part #BB3412



**After**



## Piranhabits

Piranhabits have 3/16" flexible shafts so they can bend while rotating. This allows drilling inside wall cavities, through box cut-outs or through other small openings.

### Quattro Flex Auger Bits

Fast and aggressive self feed auger bits, welded to a flexible shaft. Cuts clean holes. Crossbored at both ends for easy wire pulling. Use for wood only.

QTT3824	3/8"X24"	Auger flexbit
QTT3836	3/8"X36"	Auger flexbit
QTT3848	3/8"X48"	Auger flexbit
QTT3854	3/8"X54"	Auger flexbit
QTT3872	3/8"X72"	Auger flexbit
QTT1224	1/2"X24"	Auger flexbit
QTT1236	1/2"X36"	Auger flexbit
QTT1248	1/2"X48"	Auger flexbit
QTT1254	1/2"X54"	Auger flexbit
QTT1272	1/2"X72"	Auger flexbit
QTT91624	9/16"X24"	Auger flexbit
QTT91636	9/16"X36"	Auger flexbit
QTT91648	9/16"X48"	Auger flexbit
QTT91654	9/16"X54"	Auger flexbit
QTT91672	9/16"X72"	Auger flexbit
QTT3424	3/4"X24"	Auger flexbit
QTT3436	3/4"X36"	Auger flexbit
QTT3448	3/4"X48"	Auger flexbit
QTT3454	3/4"X54"	Auger flexbit
QTT3472	3/4"X72"	Auger flexbit

*More sizes available*

### High Speed Steel

Superior quality M-2 High Speed Steel drill bit, welded to a flexible shaft. Cuts both metal and wood. No need to worry about hidden nails or metal studs when drilling.

FLX1424	1/4"X24"	HSS Flexbit
FLX1436	1/4"X36"	HSS Flexbit
FLX1448	1/4"X48"	HSS Flexbit
FLX1454	1/4"X54"	HSS Flexbit
FLX1472	1/4"X72"	HSS Flexbit
FLX3824	3/8"X24"	HSS Flexbit
FLX3836	3/8"X36"	HSS Flexbit
FLX3848	3/8"X48"	HSS Flexbit
FLX3854	3/8"X54"	HSS Flexbit
FLX3872	3/8"X72"	HSS Flexbit
FLX1224	1/2"X24"	HSS Flexbit
FLX1236	1/2"X36"	HSS Flexbit
FLX1248	1/2"X48"	HSS Flexbit
FLX1254	1/2"X54"	HSS Flexbit
FLX1272	1/2"X72"	HSS Flexbit



### Guide Tool

Allows the Piranhabits to bend for drilling from outside the wall cavity.

Part #FIB-GUD



## Extensions

Flexible Extensions provide more reach and feature dual set screws for extra strong hold. Use the 1/4" Extensions for the 3/4" Auger Piranhas

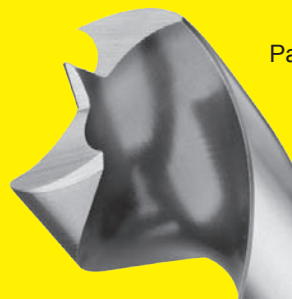


FIBEX48	3/16" x 48" Extension
FIBEX54	3/16" x 54" Extension
FIBEX72	3/16" x 72" Extension
FIBEX1448	1/4" x 48" Extension for 3/4" bits
FIBEX1454	1/4" x 54" Extension for 3/4" bits
FIBEX1472	1/4" x 72" Extension for 3/4" bits

# OverDRIVE™

**Fast Boring Auger Bits**  
Designed for battery drills

...cuts like a knife through butter!

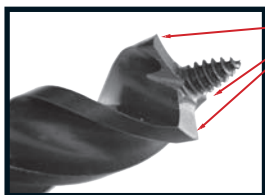


Part #AW34OD-3/4" x 7"  
#AW78OD-7/8" x 7"

**NEW**

Tired of junk auger bits? Rack-A-Tiers found the Star-M brand that has produced quality products for over 80 years for professional trades people.

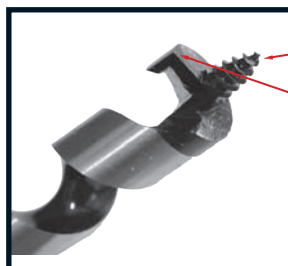
## Nail Chipper Ship Auger



TRI-CUT design with 3 precision ground edges for fast, smooth cutting without resistance.

REDUCES NAILS TO CHIPS without grabbing and leaves a clean hole with minimal "blowout."

## Standard Ship Auger



Precision ground cutting edge for fast cutting of clean holes in wood.

Burr-free lead screw for easy starts and pull-through without material build-up.

Nothing but the Best!

- BURR-FREE LEAD SCREW
- LIGHT WEIGHT
- CARBON STEEL CONSTRUCTION

With precise heat-treat and hardening processes for strength and durability.

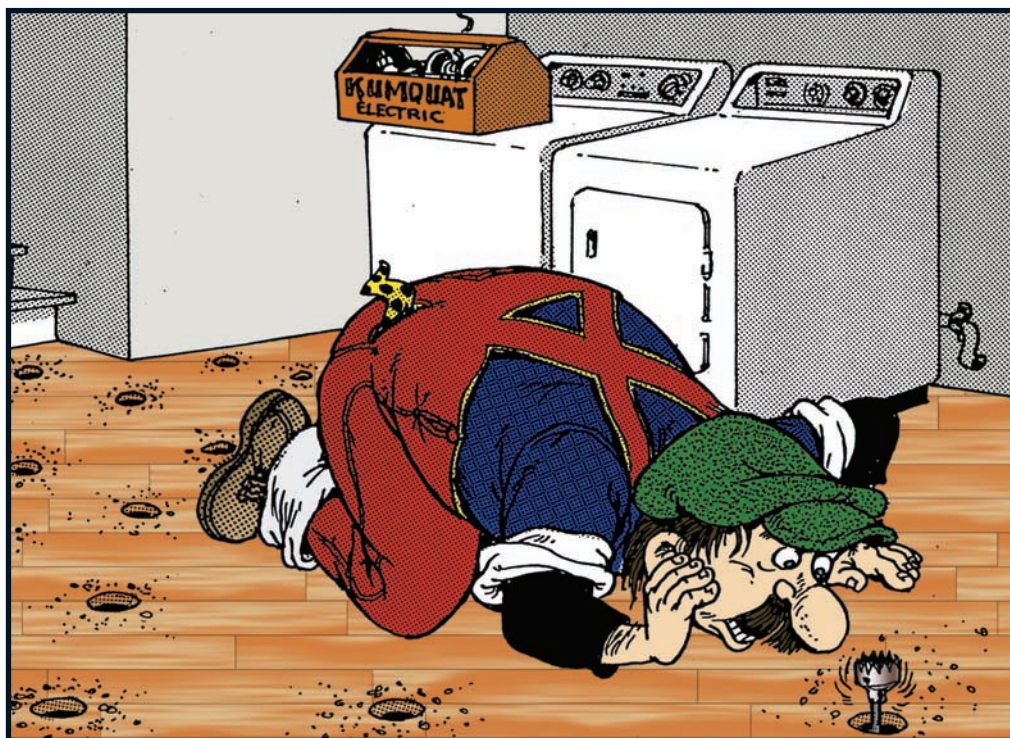
### 18" Auger Bits

AW3818	3/8"
AW1218	1/2"
AW11618	11/16"
AW3418	3/4"
AW7818	7/8"
AW118	1"
AW1418	1 1/4"

### 7 1/2" Auger Bits

AW3807	3/8"
AW1207	1/2"
AW11607	11/16"
AW3407	3/4"
AW7807	7/8"
AW107	1"

To order Tri-Cut Bits add a 'T' to the part #'s



"That's getting closer—now try a few feet to the left!"

# STUD BUDDIES

Fits all Standard Steel Studs & Punches

Part #SB240



## STEEL STUD BUSHINGS



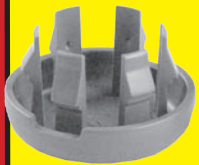
Part #SB220

- ONE PIECE
- ONE HAND INSTALLATION
- FIRE RATED V.O.
- Why Square Bushing? 70% more cross sectional area!
- More cables, easier pulls

**No Tools Required**  
**FASTER, EASIER TO USE**

# KO Killers

PLASTIC KNOCKOUT FILLERS

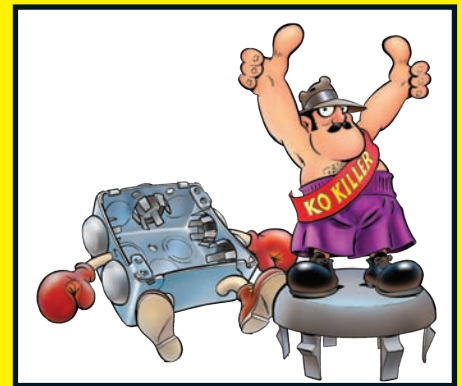


### Features:

- No tools required
- Snap in with ease
- Snap out with ease
- Non-conductive, safer

Fits *thin* (1/32") and *thick* (1/8") wall thickness.

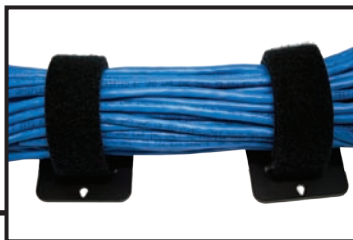
Available in 1/2" through 2" trade designations.



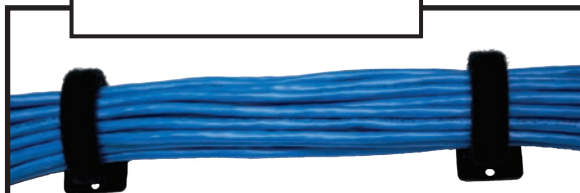
"Take the fight out of those KO's with KO Killers!!"

*All thumbs? Good, because that's all you need to install our plastic KO Killers. Just pop'em in. No more tools, hammers, flying metal fillers, exploding buss bars, etc. Needing no tools is a big plus, especially when working space is tight.*

Part #KOK Series



1" straps



1/2" straps

**NEW**

# Racky Strap

**Versatile Utility Strap with a Firm Hold & Quick Release!**

- Holds anything up to 33lb per sq. inch
- Quality hook and loop fastener with superior shear strength rating
- Double sided hook and loop may be used with soft side up or down
- Made with heavy duty Velcro
- Great for data cable
- Available in 1/2" x 12" and 1"x 12" strips

Part #RS1005 1/2"  
#RS1010 1"



## FAN BOX

Ceiling (Paddle) Fans  
to 70lb/32kg

### Features

- BIG 26 Cubic Inch Capacity
- 2 Fixture Mounting Screws
- Built in Cable Clamps
- 2 Hour Fire Wall Rated

### RED COLOR BENEFITS

- Fire Alarm Bells
- Smoke/Heat Detectors
- Exit Lights
- Emergency Lighting

# SUPER BOX

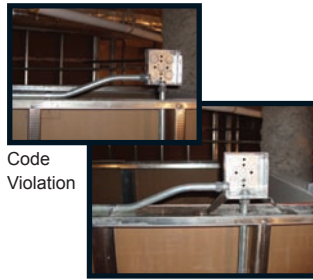


FIRE  
ALARM  
BOX

Part #SB400

## STAND OFF BRACKET

Box Mounting Plate



Code  
Violation

Code  
Compliant



- Allows for stub up fittings
- Code compliant
- Pre-punched for 4"x4" boxes

Part #SO550

## RAPID FIRE 'ROMEX'® CONNECTORS

### RAT 500

1/2"

Part #RAT500



### RAT 750

3/4"

Part #RAT750



**FAST** • NO LOCKNUTS  
**EASY** • NO TOOLS REQUIRED

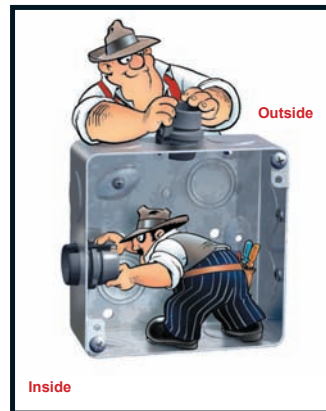
RAT 750 3/4"	Single Cables:	8/3, 6/3
RAT 500 & TT 500 1/2"	Single Cables:	14/2, 14/3, 12/2, 12/3, 10/2, 10/3
	Two Cables:	14/2, 14/3, 12/2

'ROMEX'®, a nonmetallic building electrical wire, is a registered Trademark of Southwire Company.

*Doing some renovation work? The TT500 also installs from the inside of the box after the wire is fished in. Ingenious. The RAT500 and RAT750 feature the same quality and large wire capacity but install from the outside for use in new construction. If you like the best, try these.*

### TT 500

### TOM TWO WAY



OLD WORK, NEW WORK  
INSTALLS FROM **INSIDE**  
OR **OUTSIDE** THE BOX



1/2"

Part #TT500

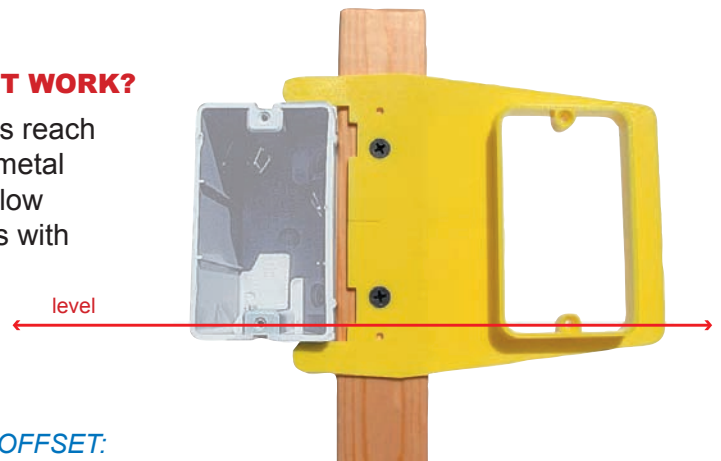
## LEVEL JACK



### HOW DOES IT WORK?

Alignment tabs reach across wood/metal studs to level low voltage outlets with A.C. boxes.

### LOW VOLTAGE DATA/COM MUD RING



### EXTRA OFFSET:

- Allows use of all standard fittings
- Reduces A.C. interference to low voltage devices
- Improves drywall finish

Part #LJ50R  
#LJ58R  
#LJ100R

**No tape measure • No level required**

Available in 1/2", 5/8" and 1" rise

*If you're fussy about your rough-in layout, the Level Jack makes life easy. If you're not, no one will notice because you can't screw up with the Level Jack. Just clip it on to the AC box and screw it down. No level, no tape measure, no special boxes, no special fittings required. Level Jacks fit most AC boxes. See the cartoon for details.*

**Straight from the Inventor's Think Tank**

# FLEX PULLER

# CONEHEADS



Part #42614-1/4" for #14-12 MC Cable  
#42638-3/8" for #10 MC Cable

**No more getting caught up in insulation or other obstacles!!**



Part #42600  
Kit includes 1 each for 1/2" & 3/4" Flex

**NEW**

- Flexible metal conduit pulling tool easily screws onto exterior of MC cable and provides a hook to pull cable.

- Easy way to pull flexible conduit. Simply thread into interior of flexible conduit, hook onto your string or fish tape and pull!

## The Ultimate, Labor Saving, Installation Tool.



**NEW**



- LaserLine will accurately install a pull line up to 120ft. Through most web trusses, across suspended ceiling systems, over hard to move objects, under sub-flooring or in any limited access areas like those found in most offices and commercial building structures.
- Cuts labor costs and improves production.
- Ability to span over heavy and hard to move objects found in many commercial structures.
- Replacement line and darts available

### Operation

Once the route has been established, just aim your LaserLine laser sight at the proposed path for your install, pull the trigger. Now that you have your pull line in place, simply attach your cable or a pull line and pull your cables across. Once your cable is in place, supports can be placed (typically at 5 foot intervals) with the point-to-point routes determined and the cable supports in place. Productivity is improved and labor intensity is decreased.

### Kit Includes:

- 2 Pull Line - 17lb. Nylon bulk line (1200ft. Per spool.)
- LaserLine - CNC machined from high quality aircraft aluminum with an anodized finish.
- Laser sight for accuracy.
- 3 Darts - Constructed from durable lightweight nylon with soft foam tip.
- 2 CO<sup>2</sup> - 12 gram cartridge (8-10 shots each).
- Sturdy carry case



Part #83000



# Research & Development Corner



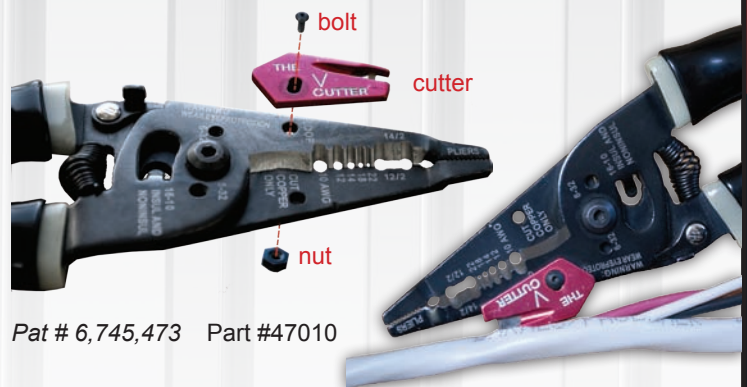
## New Products Coming Soon

- New hand-sized level equipped with powerful magnets sticks when you need it to!
- Check out the innovative design allowing you to hold conduit between level and surface.

Pat # 7,520,065    Part #45505



- A new way to strip NMSC cable
- Easily attaches to most wire strippers
- Strips cable in or out of electric boxes with push action
- Virtually eliminates nicking or cutting the wire insulator



Pat # 6,745,473    Part #47010

## STAPLE SHARK

- Unique dual-ended tool made of hardened steel to remove all sizes of cable staples with ease.
- Even the most stubborn staples are no match for the Staple Shark!



Part #52455

Includes handy Nail Puller and Pry Bar for multi-purpose use!





## Testimonials

"A quick thank you for the practical and innovative time saving tools you source and supply. Have bought a few tools, and have been very impressed. It is obvious that many of these tools have been either made by, and for tradesman."

Thank you  
James P.  
Armstrong, BC

"You've tapped into a fairly unknown market and from the looks of it, you took the best of the best... Reel-End, Rack-A-Tiers®, Bend All, Croc's Needle Nose Wire Strippers, LB Wire Guide, The All American Pull Buddy, The Lock Hard... ALL GENIUS! ...you know as well as I do, TIME IS MONEY."

Thank you  
Eric D.  
Professional Electrician  
Silsbee, TX

"I've bought a ton of Rack-A-Tiers products. The Hoppy Benders see daily use and the tools are unique. I especially like the Pocket Kart. There are more Rack-A-Tiers products I am just dying to order and try out on the job!!"

Thanks  
Donnie A.  
Electrical Journeyman  
Moncton, NB

**\* Do you have an invention? Yours could be in the next catalogue! \***

### Did you know...

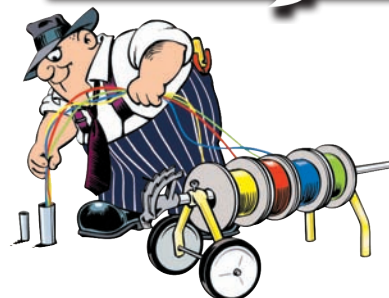
Did you know that Rack-A-Tiers was founded by real electricians just like us?



I sure did. Almost all of their products are invented by guys working out in the field.



Maybe that's why all their products solve the real problems we face every day.



It's why we get the jobs done faster, easier, and safer every time.



Well... except for last week when you forgot to use our Plate Vise ya Goon!

Hmm... so that's what went wrong.



RACK-A-TIERS Mfg. Inc.

In Canada:  
Box 24010  
Royal Oak RPO  
Victoria BC V8Z 7E7

In the USA:  
PMB 221  
136 East 8<sup>th</sup> St.  
Port Angeles WA. 98362-6129

[www.RACK-A-TIERS.com](http://www.RACK-A-TIERS.com)

Fax: 1-250-479-1489

Toll Free: 1-888-939-9991

©2011 Rack-A-Tiers  
75M 1005 01/11