

Poleline Bolts

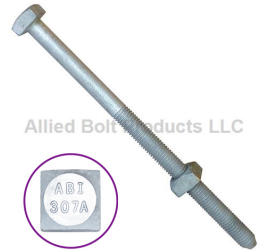


Allied Bolt Products LLC

SQUARE HEAD MACHINE BOLT WITH NUT 316SS

5/8" SQUARE HEAD MACHINE BOLT WITH NUT 316SS

PART#	DESCRIPTION	PKG QTY	CTN QTY	CTN WT.
8222SS	5/8" X 10" SQUARE HEAD MACHINE BOLT WITH NUT 316SS	40	1	38
8220SS	5/8" X 8" SQUARE HEAD MACHINE BOLT WITH NUT 316SS	20	1	15
8224SS	5/8" X 12" SQUARE HEAD MACHINE BOLT WITH NUT 316SS	40	1	45
8226SS	5/8" X 14" SQUARE HEAD MACHINE BOLT WITH NUT 316SS	40	1	51
8228SS	5/8" X 16" SQUARE HEAD MACHINE BOLT WITH NUT 316SS	30	1	42

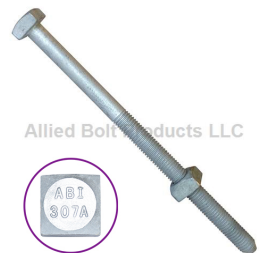


Allied Bolt Products LLC

Square Head Machine Bolt

5/8" SQUARE HEAD MACHINE BOLT WITH NUT (W/ CONE POINT)

PART#	DESCRIPTION	PKG QTY	CTN QTY	CTN WT.
8215	5/8" X 7" SQUARE HEAD MACHINE BOLT WITH NUT	50	1	36
8220	5/8" X 8" SQUARE HEAD MACHINE BOLT WITH NUT	50	1	45
8926	5/8" X 9" SQUARE HEAD MACHINE BOLT WITH NUT	50	1	45
8222	5/8" X 10" SQUARE HEAD MACHINE BOLT WITH NUT	40	1	38
8224	5/8" X 12" SQUARE HEAD MACHINE BOLT WITH NUT	40	1	45
8226	5/8" X 14" SQUARE HEAD MACHINE BOLT WITH NUT	40	1	51
8228	5/8" X 16" SQUARE HEAD MACHINE BOLT WITH NUT	30	1	42
8230	5/8" X 18" SQUARE HEAD MACHINE BOLT WITH NUT	30	1	48
8232	5/8" X 20" SQUARE HEAD MACHINE BOLT WITH NUT	20	1	44
8234	5/8" X 22" SQUARE HEAD MACHINE BOLT WITH NUT	20	1	32
8236	5/8" X 24" SQUARE HEAD MACHINE BOLT WITH NUT	20	1	38
10048	5/8" X 26" SQUARE HEAD MACHINE BOLT WITH NUT	20	1	44
8237	5/8" X 28" SQUARE HEAD MACHINE BOLT WITH NUT	20	1	50
8235	5/8" X 30" SQUARE HEAD MACHINE BOLT WITH NUT	15	1	36
8928	5/8" X 32" SQUARE HEAD MACHINE BOLT WITH NUT	15	1	39
8929	5/8" X 34" SQUARE HEAD MACHINE BOLT WITH NUT	15	1	42
8931	5/8" X 36" SQUARE HEAD MACHINE BOLT WITH NUT	15	1	45
8935	5/8" X 40" SQUARE HEAD MACHINE BOLT WITH NUT	5	1	16



Allied Bolt Products LLC

3/4" SQUARE HEAD MACHINE BOLT WITH NUT (W/ CONE POINT)

PART#	DESCRIPTION	PKG QTY	CTN QTY	CTN WT.
8154	3/4" X 7" SQUARE HEAD MACHINE BOLT WITH NUT	50	1	53
8238	3/4" X 8" SQUARE HEAD MACHINE BOLT WITH NUT	40	1	48
8240	3/4" X 10" SQUARE HEAD MACHINE BOLT WITH NUT	30	1	35
8242	3/4" X 12" SQUARE HEAD MACHINE BOLT WITH NUT	20	1	34
8244	3/4" X 14" SQUARE HEAD MACHINE BOLT WITH NUT	20	1	39
8246	3/4" X 16" SQUARE HEAD MACHINE BOLT WITH NUT	20	1	44
8248	3/4" X 18" SQUARE HEAD MACHINE BOLT WITH NUT	20	1	47
8250	3/4" X 20" SQUARE HEAD MACHINE BOLT WITH NUT	20	1	56
8252	3/4" X 22" SQUARE HEAD MACHINE BOLT WITH NUT	10	1	32
8254	3/4" X 24" SQUARE HEAD MACHINE BOLT WITH NUT	10	1	36
8255	3/4" X 26" SQUARE HEAD MACHINE BOLT WITH NUT	10	1	31
8259	3/4" X 28" SQUARE HEAD MACHINE BOLT WITH NUT	10	1	35
8930	3/4" X 30" SQUARE HEAD MACHINE BOLT WITH NUT	10	1	40
82623	3/4" X 32" SQUARE HEAD MACHINE BOLT WITH NUT	10	1	40
82624	3/4" X 34" SQUARE HEAD MACHINE BOLT WITH NUT	10	1	40
82625	3/4" X 36" SQUARE HEAD MACHINE BOLT WITH NUT	10	1	42



Poleline Cable TV Hardware Catalog

May 12, 2020

Double Arming Bolt
5/8" DOUBLE ARMING BOLT



Allied Bolt Products LLC

PART#	DESCRIPTION	PKG QTY	CTN QTY	CTN WT.
5950	5/8" X 10" DOUBLE ARMING BOLT	40	1	52
5952	5/8" X 12" DOUBLE ARMING BOLT	40	1	50
5954	5/8" X 14" DOUBLE ARMING BOLT	35	1	58
5956	5/8" X 16" DOUBLE ARMING BOLT	30	1	45
5958	5/8" X 18" DOUBLE ARMING BOLT	30	1	57
5960	5/8" X 20" DOUBLE ARMING BOLT	20	1	40
5962	5/8" X 22" DOUBLE ARMING BOLT	20	1	42
5964	5/8" X 24" DOUBLE ARMING BOLT	20	1	44
5966	5/8" X 26" DOUBLE ARMING BOLT	20	1	46
5968	5/8" X 28" DOUBLE ARMING BOLT	20	1	52
5970	5/8" X 30" DOUBLE ARMING BOLT	15	1	40
5972	5/8" X 32" DOUBLE ARMING BOLT	15	1	42
5974	5/8" X 34" DOUBLE ARMING BOLT	15	1	48
5976	5/8" X 36" DOUBLE ARMING BOLT	15	1	50
6009	5/8" x 40" DOUBLE ARMING BOLT	7	1	26
6705	5/8" x 42" DOUBLE ARMING BOLT	7	1	27
6706	5/8" X 44" DOUBLE ARMING BOLT	7	1	27
6707	5/8" X 46" DOUBLE ARMING BOLT	7	1	30
6105	5/8" X 48" DOUBLE ARMING BOLT	7	1	30
9997966	5/8" X 60" DOUBLE ARMING BOLT	5	1	24

3/4" DOUBLE ARMING BOLT



Allied Bolt Products LLC

PART#	DESCRIPTION	PKG QTY	CTN QTY	CTN WT.
59780	3/4" x 6" DOUBLE ARMING BOLT	25	1	24
5973	3/4" x 7" DOUBLE ARMING BOLT	25	1	28
5975	3/4" x 8" DOUBLE ARMING BOLT	25	1	28
5977	3/4" x 10" DOUBLE ARMING BOLT	30	1	40
5978	3/4" X 12" DOUBLE ARMING BOLT	20	1	40
5980	3/4" X 14" DOUBLE ARMING BOLT	20	1	44
5982	3/4" X 16" DOUBLE ARMING BOLT	20	1	48
5984	3/4" X 18" DOUBLE ARMING BOLT	20	1	50
5986	3/4" X 20" DOUBLE ARMING BOLT	20	1	60
5988	3/4" X 22" DOUBLE ARMING BOLT	10	1	32
5990	3/4" X 24" DOUBLE ARMING BOLT	10	1	32
5992	3/4" X 26" DOUBLE ARMING BOLT	10	1	38
5994	3/4" X 28" DOUBLE ARMING BOLT	10	1	37
5996	3/4" X 30" DOUBLE ARMING BOLT	10	1	38
5997	3/4" X 32" DOUBLE ARMING BOLT	10	1	42
5998	3/4" X 34" DOUBLE ARMING BOLT	10	1	43
5999	3/4" X 36" DOUBLE ARMING BOLT	10	1	45
6700	3/4" X 38" DOUBLE ARMING BOLT	5	1	25
6702	3/4" X 40" DOUBLE ARMING BOLT	5	1	25
6104	3/4" X 42" DOUBLE ARMING BOLT	5	1	26
6108	3/4" X 46" DOUBLE ARMING BOLT	5	1	30
9997967	3/4" X 60" DOUBLE ARMING BOLT	5	1	35

Straight and Angled Guy Bolts

5/8" STRAIGHT GUY BOLT



Allied Bolt Products LLC

PART#	DESCRIPTION	PKG QTY	CTN QTY	CTN WT.
5804	5/8" X 8" STRAIGHT GUY BOLT	25	1	31
5805	5/8" X 10" STRAIGHT GUY BOLT	20	1	28
5806	5/8" X 12" STRAIGHT GUY BOLT	10	1	15
5807	5/8" X 14" STRAIGHT GUY BOLT	10	1	17
5808	5/8" X 16" STRAIGHT GUY BOLT	10	1	20
5809	5/8" X 18" STRAIGHT GUY BOLT	20	1	39
5852	5/8" X 20" STRAIGHT GUY BOLT	10	1	21

3/4" STRAIGHT GUY BOLT



Allied Bolt Products LLC

PART#	DESCRIPTION	PKG QTY	CTN QTY	CTN WT.
5857	3/4" X 10" STRAIGHT GUY BOLT	10	1	22
5814	3/4" X 12" STRAIGHT GUY BOLT	10	1	33
5813	3/4" X 14" STRAIGHT GUY BOLT	10	1	39
5812	3/4" X 16" STRAIGHT GUY BOLT	10	1	45
5858	3/4" X 18" STRAIGHT GUY BOLT	10	1	51
5859	3/4" X 20" STRAIGHT GUY BOLT	5	1	19

5/8" ANGLED GUY BOLT



Allied Bolt Products LLC

PART#	DESCRIPTION	PKG QTY	CTN QTY	CTN WT.
5831	5/8" X 8" ANGLED GUY BOLT	20	1	26
5832	5/8" X 10" ANGLED GUY BOLT	20	1	30
5834	5/8" X 12" ANGLED GUY BOLT	10	1	16
5836	5/8" X 14" ANGLED GUY BOLT	10	1	17
5838	5/8" X 16" ANGLED GUY BOLT	10	1	24
5839	5/8" X 18" ANGLED GUY BOLT	10	1	21
5860	5/8" X 20" ANGLED GUY BOLT	5	1	21
5853	5/8" X 22" ANGLED GUY BOLT	5	1	25

3/4" ANGLED GUY BOLT



Allied Bolt Products LLC

PART#	DESCRIPTION	PKG QTY	CTN QTY	CTN WT.
5824	3/4" X 10" ANGLED GUY BOLT	10	1	22
5825	3/4" X 12" ANGLED GUY BOLT	10	1	23
5826	3/4" X 14" ANGLED GUY BOLT	10	1	39
5815	3/4" X 16" ANGLED GUY BOLT	10	1	28
5816	3/4" X 18" ANGLED GUY BOLT	10	1	30
5817	3/4" X 20" ANGLED GUY BOLT	5	1	20
5818	3/4" X 22" ANGLED GUY BOLT	5	1	17



Allied Bolt Products LLC

Carriage Bolt

3/8" CARRIAGE BOLT

PART#	DESCRIPTION	PKG QTY	CTN QTY	CTN WT.
918	3/8" X 1-1/4" CARRIAGE BOLT	50	1	4
270	3/8" X 2-1/2" CARRIAGE BOLT	100	1	17
923	3/8" X 3" CARRIAGE BOLT	50	4	40
926	3/8" X 4" CARRIAGE BOLT	100	1	15
927	3/8" X 4-1/2" CARRIAGE BOLT	100	1	16
925	3/8" X 5" CARRIAGE BOLT	250	1	43
941	3/8" X 5-1/2" CARRIAGE BOLT	50	1	9
928	3/8" X 6" CARRIAGE BOLT	100	1	18
935	3/8" X 7" CARRIAGE BOLT	100	1	22
929	3/8" X 8" CARRIAGE BOLT	100	1	25
930	3/8" X 10" CARRIAGE BOLT	100	1	32
931	3/8" X 12" CARRIAGE BOLT	100	1	42
934	3/8" X 14" CARRIAGE BOLT	100	1	49



Allied Bolt Products LLC

1/2" CARRIAGE BOLT

PART#	DESCRIPTION	PKG QTY	CTN QTY	CTN WT.
10002	1/2" X 1-1/2" CARRIAGE BOLT	500	1	65
10005	1/2" X 2-1/2" CARRIAGE BOLT	50	1	12
1499	1/2" X 4" CARRIAGE BOLT	50	1	15
890	1/2" X 4-3/4" CARRIAGE BOLT	50	1	16
1498	1/2" X 4-1/2" CARRIAGE BOLT	100	1	26
946	1/2" X 5" CARRIAGE BOLT	50	1	18
1490	1/2" X 5-1/2" CARRIAGE BOLT	50	1	17
7018	1/2" X 6" CARRIAGE BOLT	50	1	17
1493	1/2" X 7" CARRIAGE BOLT	50	1	22
1492	1/2" X 8" CARRIAGE BOLT	50	1	23
14910	1/2" X 10" CARRIAGE BOLT	50	1	29

Support Braces

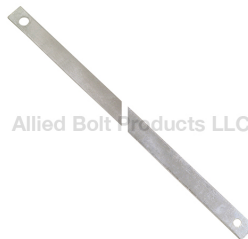


Allied Bolt Products LLC

Alley Arm Brace

ALLEY ARM BRACE/ ANGLE STEEL

PART#	DESCRIPTION	PKG QTY	CTN QTY	CTN WT.
900031	5' ALLEY ARM BRACE 1-3/4" X 1-3/4" X 3/16" ANGLE STEEL	1	1	13
900032	7' ALLEY ARM BRACE 1-3/4" X 1-3/4" X 3/16" ANGLE STEEL	1	1	18
900033	10' ALLEY ARM BRACE 2" X 2" X 3/16" ANGLE STEEL	1	1	36



Allied Bolt Products LLC

Crossarm Brace

CROSSARM BRACE

PART#	DESCRIPTION	PKG QTY	CTN QTY	CTN WT.
5096	20" CROSSARM BRACE	20	1	46
5092	26" CROSSARM BRACE	20	1	38
5091	28" CROSSARM BRACE	20	1	49
5070	30" CROSSARM BRACE	20	1	43
5093	32" CROSSARM BRACE	20	1	46



Poleline Cable TV Hardware Catalog

May 12, 2020



Allied Bolt Products LLC

Guard Arm Brace

Guard Arm Brace

PART#	DESCRIPTION	PKG QTY	CTN QTY	CTN WT.
5057	GUARD ARM BRACE	25	1	39



Allied Bolt Products LLC

B Pole Brace

PART#	DESCRIPTION	PKG QTY	CTN QTY	CTN WT.
2090	B POLE BRACE	2	1	16

Wall and Frame Brackets



Allied Bolt Products LLC

Wall Strap

WALL STRAP

PART#	DESCRIPTION	PKG QTY	CTN QTY	CTN WT.
5065	1/2" WALL STRAP	10	1	27
5066	5/8" WALL STRAP	5	1	22
5068	SHORT 5/8" WALL STRAP	10	1	27

U WALL STRAP

PART#	DESCRIPTION	PKG QTY	CTN QTY	CTN WT.
5067	"U" WALL STRAP	5	10	50



Allied Bolt Products LLC

Extension Brackets



Allied Bolt Products LLC

CONDUIT RISER BRACKET

CONDUIT RISER BRACKET

PART#	DESCRIPTION	PKG QTY	CTN QTY	CTN WT.
9017	CONDUIT RISER BRACKET	4	1	8



Poleline Cable TV Hardware Catalog

May 12, 2020



Allied Bolt Products LLC

DEADEND BRACKET

DEADEND BRACKET

PART#	DESCRIPTION	PKG QTY	CTN QTY	CTN WT.
7395	DEADEND BRACKET ASSEMBLY WITH 4 BRACKETS	1	1	24



Allied Bolt Products LLC

Cable Extension Bracket

CABLE EXTENSION BRACKET

PART#	DESCRIPTION	PKG QTY	CTN QTY	CTN WT.
1188	17-1/2" TO 26" CABLE EXTENSION BRACKET	1	1	30
1189	26-1/2" TO 44-1/2" CABLE EXTENSION BRACKET	1	1	60

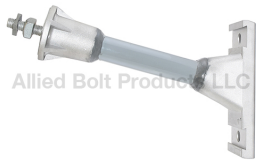


Allied Bolt Products LLC

EXTENSION BRACKET

CABLE EXTENSION ARM

PART#	DESCRIPTION	PKG QTY	CTN QTY	CTN WT.
7584	15" EXTENSION BRACKET	2	1	14
7585	18" EXTENSION BRACKET	2	1	17
7586	24" EXTENSION BRACKET	2	1	20



Allied Bolt Products LLC

Fiberglass Communication Standoff Bracket

FIBERGLASS COMMUNICATION STANDOFF BRACKET

PART#	DESCRIPTION	PKG QTY	CTN QTY	CTN WT.
4869	12" FIBERGLASS COMMUNICATION STANDOFF BRACKET	2	1	10
4870	15" FIBERGLASS COMMUNICATION STANDOFF BRACKET	2	1	11
4871	18" FIBERGLASS COMMUNICATION STANDOFF BRACKET	2	1	12
4872	21" FIBERGLASS COMMUNICATION STANDOFF BRACKET	2	1	13
4874	24" FIBERGLASS COMMUNICATION STANDOFF BRACKET	2	1	14
4875	30" FIBERGLASS COMMUNICATION STANDOFF BRACKET	2	1	16
4876	36" FIBERGLASS COMMUNICATION STANDOFF BRACKET	2	1	17

Wire Formed Hardware

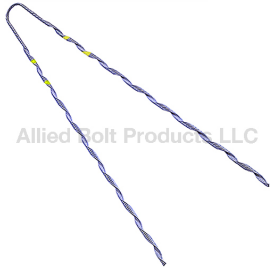


Allied Bolt Products LLC

GUY WIRE DEADEND BEZINAL COATED

Guy Wire Deadend Bezinal™ Coated

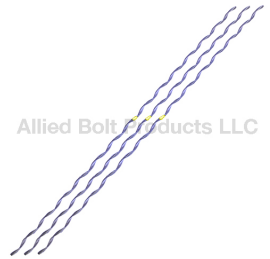
PART#	DESCRIPTION	PKG QTY	CTN QTY	CTN WT.
AB910060	5/16" Guy Wire Deadend Bezinal™ Coated - Black	50	1	40
AB910070	3/8" Guy Wire Deadend Bezinal™ Coated - Orange	20	1	23
AB910040	1/4" Guy Wire Deadend Bezinal™ Coated - Yellow	50	1	36



Guy Wire Deadend

Guy Wire Deadend

PART#	DESCRIPTION	PKG QTY	CTN QTY	CTN WT.
AB110020	3/16" Guy Deadend Grip Steel Class B Coated - Red	100	1	30
AB110040	1/4" Guy Deadend Grip Steel Class B Coated - Yellow	50	1	36
AB110060	5/16" Guy Deadend Grip Steel Class B Coated - Black	50	1	40
AB110070	3/8" Guy Deadend Grip Steel Class B Coated - Orange	25	1	28
AB110080	7/16" Guy Deadend Grip Steel Class B Coated - Green	20	1	31
AB110090	1/2" Guy Deadend Grip Steel Class B Coated - Blue	10	1	29



Guy Wire Splice

Guy Wire Splice

PART#	DESCRIPTION	PKG QTY	CTN QTY	CTN WT.
ABS1104	1/4" Strand Splice 35" Long Class B	50	1	27
ABS1106	5/16" Strand Splice 42" Long Class B	50	1	40
ABS1107	3/8" Strand Splice 50" Long Class B	25	1	32
ABS1108	7/16" Strand Splice 50" Long Class B	20	1	30

Clamps and Markers For Guying

Guy Clamp

ONE BOLT GUY CLAMP



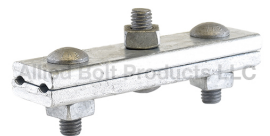
PART#	DESCRIPTION	PKG QTY	CTN QTY	CTN WT.
5055	1/2" ONE BOLT GUY CLAMP 1-7/16" X 1-9/16" PLATES	50	1	32

TWO BOLT GUY CLAMP



PART#	DESCRIPTION	PKG QTY	CTN QTY	CTN WT.
5058	1/2" TWO BOLT GUY CLAMP 3-3/8" X 1-9/16" PLATES	50	1	69

THREE BOLT GUY CLAMP



PART#	DESCRIPTION	PKG QTY	CTN QTY	CTN WT.
5059	1/2" THREE BOLT GUY CLAMP 5-7/8" X 1-9/16" PLATES	25	1	42
5056	5/8" THREE BOLT GUY CLAMP 6" X 1-21/32" PLATES	25	1	55

B Strand Serving Sleeve

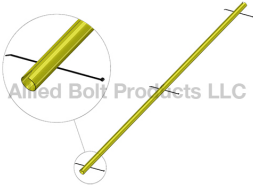
STRAND SERVING SLEEVE



PART#	DESCRIPTION	PKG QTY	CTN QTY	CTN WT.
847	1/4" STRAND SERVING SLEEVE	100	4	11
848	5/16" STRAND SERVING SLEEVE	50	4	12
849	3/8" STRAND SERVING SLEEVE	50	4	10
850	7/16" STRAND SERVING SLEEVE	50	1	6

Guy Markers

FULL ROUND GUY MARKER W/ CABLE TIES



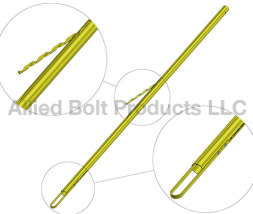
PART#	DESCRIPTION	PKG QTY	CTN QTY	CTN WT.
11402	1-1/4" X 8' FULL ROUND YELLOW GUY MARKER WITH CABLE TIE	25	1	32
11404	1-1/2" X 8' FULL ROUND YELLOW GUY MARKER WITH CABLE TIE	25	1	33
11406	2" X 8' FULL ROUND YELLOW GUY MARKER WITH CABLE TIE	15	1	49

"B" PROFILE GUY MARKER W/ HELICAL PIG TAIL



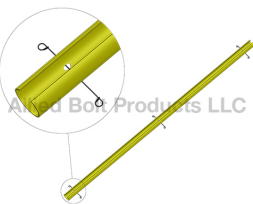
PART#	DESCRIPTION	PKG QTY	CTN QTY	CTN WT.
11401	1-1/4" X 8' "B" PROFILE GUY MARKER W/ HELICAL PIG TAIL	12	1	10
11415	1-1/2" X 8' "B" PROFILE GUY MARKER W/ HELICAL PIG TAIL	12	1	17
11417	2" X 8' "B" PROFILE GUY MARKER W/ HELICAL PIG TAIL	25	1	49

"B" PROFILE W/ HELICAL PIG TAIL AND ANCHOR ROD LOOP



PART#	DESCRIPTION	PKG QTY	CTN QTY	CTN WT.
11414	1-1/4" X 8' "B" PROFILE W/ HELICAL PIG TAIL AND ANCHOR ROD LOOP	25	1	32
11418	2" X 8' "B" PROFILE W/ HELICAL PIG TAIL AND ANCHOR ROD LOOP	25	1	49

TWO THIRD ROUND YELLOW GUY MARKER W/ 3 WIRE TIES



PART#	DESCRIPTION	PKG QTY	CTN QTY	CTN WT.
11437	2-1/2" X 7' TWO THIRD ROUND YELLOW GUY MARKER W/ 3 WIRE TIES	15	1	18
12011	2" X 8' TWO THIRD ROUND YELLOW GUY MARKER W/ 3 WIRE TIES	15	1	19

Strand Dead-End

EHS STRAND DEADEND



PART#	DESCRIPTION	PKG QTY	CTN QTY	CTN WT.
AB520000	1/4" EHS STRAND DEAD-END YELLOW	25	1	14
AB520100	5/16" EHS STRAND DEAD-END BLACK	25	1	22
AB520200	3/8" EHS STRAND DEAD-END ORANGE	25	1	36
AB520300	7/16" EHS STRAND DEAD-END GREEN	25	1	50
AB520400	1/2" EHS STRAND DEADEND BLUE	25	1	54

ALL GRADE STRAND DEADEND



PART#	DESCRIPTION	PKG QTY	CTN QTY	CTN WT.
AB509900	3/16 ALL GRADE STRAND DEADEND ORANGE	50	1	22
AB510000	1/4" ALL GRADE STRAND DEADEND YELLOW	50	1	19
AB510100	5/16" ALL GRADE STRAND DEADEND BLACK	50	1	34
AB510200	3/8" ALL GRADE STRAND DEADEND ORANGE	50	1	53

LONG BAIL EHS STRAND DEADEND



PART#	DESCRIPTION	PKG QTY	CTN QTY	CTN WT.
AB520000L	1/4" LONG BAIL EHS STRAND DEADEND YELLOW (OVERALL LENGTH 13.625")	25	1	17
AB520100L	5/16" LONG BAIL EHS STRAND DEADEND BLACK (OVERALL LENGTH 15.67")	25	1	24
AB520200L	3/8" LONG BAIL EHS STRAND DEADEND ORANGE (OVERALL LENGTH 17.36")	25	1	40
AB520300L	7/16" LONG BAIL EHS STRAND DEADEND GREEN (OVERALL LENGTH 18.47")	25	1	50

LONG BAIL ALL GRADE STRAND DEADEND



PART#	DESCRIPTION	PKG QTY	CTN QTY	CTN WT.
AB510000L	1/4" LONG BAIL ALL GRADE STRAND DEADEND YELLOW (OVERALL LENGTH 12.75")	50	1	23
AB510100L	5/16" LONG BAIL ALL GRADE STRAND DEADEND BLACK (OVERALL LENGTH 13.42")	50	1	40
AB510200L	3/8" LONG BAIL ALL GRADE STRAND DEADEND ORANGE (OVERALL LENGTH 17.17")	50	1	56

EXTRA LONG BAIL ALL GRADE STRAND DEADEND



PART#	DESCRIPTION	PKG QTY	CTN QTY	CTN WT.
AB510100LL	5/16" EXTRA LONG BAIL ALL GRADE STRAND DEADEND BLACK (OVERALL LENGTH 24")	50	1	50
AB510200LL	3/8" EXTRA LONG BAIL ALL GRADE STRAND DEADEND ORANGE (OVERALL LENGTH 24")	50	1	56

Strand Connectors

Strand Splice

EHS STRAND SPLICE



PART#	DESCRIPTION	PKG QTY	CTN QTY	CTN WT.
AB504000	1/4" EHS STRAND SPLICE	50	1	27
AB504100	5/16" EHS STRAND SPLICE	50	1	36
AB504200	3/8" EHS STRAND SPLICE	25	1	30
AB504300	7/16" EHS STRAND SPLICE	25	1	38
AB504400	1/2" EHS STRAND SPLICE	25	1	42

ALL GRADE STRAND SPLICE



PART#	DESCRIPTION	PKG QTY	CTN QTY	CTN WT.
AB500000	1/4" STRAND SPLICE ALL GRADE	50	1	16
AB500100	5/16" STRAND SPLICE ALL GRADE	50	1	30
AB500200	3/8" STRAND SPLICE ALL GRADE	50	1	22



Allied Bolt Products LLC

STRAND REDUCING SPLICE

STRAND REDUCING SPLICE

PART#	DESCRIPTION	PKG QTY	CTN QTY	CTN WT.
AB508600	1/4" TO 3/16" STRAND REDUCING SPLICE	50	1	50
AB508700	5/16" TO 1/4" STRAND REDUCING SPLICE	50	1	50
AB502200	3/8" TO 5/16" STRAND REDUCING SPLICE	50	1	50
AB502300	7/16" TO 3/8" STRAND REDUCING SPLICE	50	1	50

Eyelets



Allied Bolt Products LLC

Straight Single Strand Eyelet

STRAIGHT SINGLE STRAND EYELET

PART#	DESCRIPTION	PKG QTY	CTN QTY	CTN WT.
2050	5/8" STRAIGHT SINGLE STRAND EYELET	25	1	29
2051	3/4" STRAIGHT SINGLE STRAND EYELET	25	1	31



Allied Bolt Products LLC

Single Strand Angled Eyelet

ANGLED SINGLE STRAND EYELET

PART#	DESCRIPTION	PKG QTY	CTN QTY	CTN WT.
2060	5/8" ANGLED SINGLE STRAND EYELET	25	1	36
2061	3/4" ANGLED SINGLE STRAND EYELET	25	1	35

Eye Nuts



Allied Bolt Products LLC

Single and Dual Forged Eye Nut

SINGLE FORGED EYE NUT

PART#	DESCRIPTION	PKG QTY	CTN QTY	CTN WT.
5050	5/8"-11 SINGLE FORGED EYE NUT	50	1	40
5051	3/4"-10 SINGLE FORGED EYE NUT	50	1	41



Allied Bolt Products LLC

DUAL FORGED EYE NUT

PART#	DESCRIPTION	PKG QTY	CTN QTY	CTN WT.
5045	5/8"-11 DUAL STRAND EYE NUT	25	1	30
5046	3/4"-10 DUAL FORGED EYE NUT	25	1	44

Suspension Clamps and Straps

Straight Cable Suspension Clamp

CABLE SUSPENSION CLAMP



PART#	DESCRIPTION	PKG QTY	CTN QTY	CTN WT.
5080	B CABLE SUSPENSION CLAMP FOR 5/8" THRU BOLTS	25	1	43
5082	SUSPENSION CLAMP WITH FLAT KEEPER PLATE FOR 5/8" THRU BOLTS	25	1	41
5087	THREE BOLT CABLE SUSPENSION CLAMP FOR 3/4" THRU BOLTS	25	1	47

ONE BOLT CABLE SUSPENSION CLAMP



PART#	DESCRIPTION	PKG QTY	CTN QTY	CTN WT.
5074	ONE BOLT CABLE SUSPENSION CLAMP FOR 5/8" THRU BOLTS	50	1	38

C Cable Clamp

C CABLE CLAMP



PART#	DESCRIPTION	PKG QTY	CTN QTY	CTN WT.
4080	C CABLE CLAMP	16	1	39

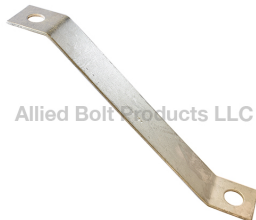
Reinforcing Strap

REINFORCING STRAPS



PART#	DESCRIPTION	PKG QTY	CTN QTY	CTN WT.
102	C REINFORCING STRAP	100	1	51
103	S REINFORCING STRAP	100	1	31
8003	D REINFORCING STRAP	100	1	42

REINFORCING BRACE



PART#	DESCRIPTION	PKG QTY	CTN QTY	CTN WT.
8000	2" REINFORCING BRACE	25	1	22
8001	1-3/8" REINFORCING BRACE	25	1	19

Corner Attachment Bracket

CORNER ATTACHMENT BRACKET



PART#	DESCRIPTION	PKG QTY	CTN QTY	CTN WT.
5086	CORNER ATTACHMENT BRACKET	25	1	36



Messenger Support Clamp

MESSENGER SUPPORT CLAMP

PART#	DESCRIPTION	PKG QTY	CTN QTY	CTN WT.
10075	MESSENGER SUPPORT CLAMP	100	1	38



AERIAL MESSENGER CLAMP WITH HOOK

THREE BOLT AERIAL CABLE MESSENGER CLAMP W/ HOOK

PART#	DESCRIPTION	PKG QTY	CTN QTY	CTN WT.
8345	THREE BOLT AERIAL CABLE MESSENGER CLAMP W/ HOOK	10	1	40



SINGLE BOLT AERIAL CABLE MESSENGER CLAMP W/ HOOK

PART#	DESCRIPTION	PKG QTY	CTN QTY	CTN WT.
8346	SINGLE BOLT AERIAL CABLE MESSENGER CLAMP W/ HOOK	20	1	40

U Guards and Ground Wire Molding



U Cable Guard

U CABLE GUARD - TYPE 1

PART#	DESCRIPTION	PKG QTY	CTN QTY	CTN WT.
9006-U0	U-0 CABLE GUARD 8FT	5	1	35
9006-U1	U-1 CABLE GUARD 8FT	5	1	45
9006-U2	U-2 CABLE GUARD 8FT	5	1	60
9006-U3	U-3 CABLE GUARD 8FT	2	1	28
9006-U4	U-4 CABLE GUARD 8FT	2	1	36
9006-U05	U-05 CABLE GUARD 5FT	5	1	15
9006-U15	U-15 CABLE GUARD 5FT	5	1	20
9006-U25	U-25 CABLE GUARD 5FT	5	1	43
9006-U35	U-35 CABLE GUARD 5FT	2	1	31
9006-U45	U-45 CABLE GUARD 5FT	2	1	24



U Cable Guard Strap

U CABLE GUARD STRAP

PART#	DESCRIPTION	PKG QTY	CTN QTY	CTN WT.
9005-U0	U CABLE GUARD STRAP SZ 0	50	4	14
9005-U1	U CABLE GUARD STRAP SZ 1	25	4	12
9005-U1A	U CABLE GUARD STRAP SZ 1A	25	4	14
9005-U2	U CABLE GUARD STRAP SZ 2	25	8	40
9005-U3	U CABLE GUARD STRAP SZ 3	25	1	13
9005-U4	U CABLE GUARD STRAP SZ 4	25	1	16
9005-U6	U CABLE GUARD STRAP SZ 6	25	1	20
9005-U8	U CABLE GUARD STRAP SZ 8	25	1	22



Poleline Cable TV Hardware Catalog

May 12, 2020



Allied Bolt Products LLC

Ground Wire Molding

GROUND WIRE MOLDING

PART#	DESCRIPTION	PKG QTY	CTN QTY	CTN WT.
11400	1/2" X 8' GROUND WIRE MOLDING BLACK	125	1	50
11400GY	1/2" X 8' GROUND WIRE MOLDING GRAY	125	1	52
11441	5/8" X 8' GROUND WIRE MOLDING BLACK	80	1	46
11442	3/4" X 8' GROUND WIRE MOLDING BLACK	50	1	18
11442GY	3/4" X 8' GROUND WIRE MOLDING GRAY	50	1	68
11443	1" X 8' GROUND WIRE MOLDING BLACK	25	1	15



Allied Bolt Products LLC

POLY CABLE GUARD

POLYETHYLENE U CABLE GUARD

PART#	DESCRIPTION	PKG QTY	CTN QTY	CTN WT.
9001-15	1" X 5' POLYETHYLENE U CABLE GUARD	6	1	60
9001-18	1" X 8' POLYETHYLENE U CABLE GUARD	6	1	60
9001-110	1" X 10' POLYETHYLENE U CABLE GUARD	6	1	60
9001-25	2" X 5' POLYETHYLENE U CABLE GUARD	6	1	60
9001-28	2" X 8' POLYETHYLENE U CABLE GUARD	6	1	60
9001-210	2" X 10' POLYETHYLENE U CABLE GUARD	6	1	60
9001-35	3" X 5' POLYETHYLENE U CABLE GUARD	6	1	60
9001-38	3" X 8' POLYETHYLENE U CABLE GUARD	6	1	60
9001-310	3" X 10' POLYETHYLENE U CABLE GUARD	6	1	60
9001-45	4" X 5' POLYETHYLENE U CABLE GUARD	6	1	60
9001-48	4" X 8' POLYETHYLENE U CABLE GUARD	6	1	60
9001-410	4" X 10' POLYETHYLENE U CABLE GUARD	6	1	60
9001-55	5" X 5' POLYETHYLENE U CABLE GUARD	6	1	60
9001-58	5" X 8' POLYETHYLENE U CABLE GUARD	6	1	60
9001-510	5" X 10' POLYETHYLENE U CABLE GUARD	6	1	60
9001-65	6" X 5' POLYETHYLENE U CABLE GUARD	6	1	60
9001-68	6" X 8' POLYETHYLENE U CABLE GUARD	6	1	60
9001-610	6" X 10' POLYETHYLENE U CABLE GUARD	6	1	60



Allied Bolt Products LLC

STEEL FLANGED U GUARD HOT DIP GALVANIZED

1" STEEL FLANGED U GUARD HOT DIP GALVANIZED

PART#	DESCRIPTION	PKG QTY	CTN QTY	CTN WT.
9004-110	1" X 10' STEEL FLANGED U GUARD HOT DIP GALVANIZED	1	1	9



Allied Bolt Products LLC

1-1/4" STEEL FLANGED U GUARD HOT DIP GALVANIZED

PART#	DESCRIPTION	PKG QTY	CTN QTY	CTN WT.
9004-1145	1-1/4" X 5' STEEL FLANGED U GUARD HOT DIP GALVANIZED	1	1	6
9004-1148	1-1/4" X 8' STEEL FLANGED U GUARD HOT DIP GALVANIZED	1	1	10



Poleline Cable TV Hardware Catalog

May 12, 2020

2" STEEL FLANGED U GUARD HOT DIP GALVANIZED

Allied Bolt Products LLC

PART#	DESCRIPTION	PKG QTY	CTN QTY	CTN WT.
9004-25	2" X 5' STEEL FLANGED U GUARD HOT DIP GALVANIZED	1	1	9
9004-28	2" X 8' STEEL FLANGED U GUARD HOT DIP GALVANIZED	1	1	14
9004-210	2" X 10' STEEL FLANGED U GUARD HOT DIP GALVANIZED	1	1	18

3" STEEL FLANGED U GUARD HOT DIP GALVANIZED

Allied Bolt Products LLC

PART#	DESCRIPTION	PKG QTY	CTN QTY	CTN WT.
9004-35	3" X 5' STEEL FLANGED U GUARD HOT DIP GALVANIZED	1	1	12
9004-38	3" X 8' STEEL FLANGED U GUARD HOT DIP GALVANIZED	1	1	19
9004-310	3" X 10' STEEL FLANGED U GUARD HOT DIP GALVANIZED	1	1	24

4" STEEL FLANGED U GUARD HOT DIP GALVANIZED

Allied Bolt Products LLC

PART#	DESCRIPTION	PKG QTY	CTN QTY	CTN WT.
9004-45	4" X 5' STEEL FLANGED U GUARD HOT DIP GALVANIZED	1	1	15
9004-48	4" X 8' STEEL FLANGED U GUARD HOT DIP GALVANIZED	1	1	27
9004-410	4" X 10' STEEL FLANGED U GUARD HOT DIP GALVANIZED	1	1	34

5" STEEL FLANGED U GUARD HOT DIP GALVANIZED

Allied Bolt Products LLC

PART#	DESCRIPTION	PKG QTY	CTN QTY	CTN WT.
9004-55	5" X 5' STEEL FLANGED U GUARD HOT DIP GALVANIZED	1	1	18
9004-58	5" X 8' STEEL FLANGED U GUARD HOT DIP GALVANIZED	1	1	28
9004-510	5" X 10' STEEL FLANGED U GUARD HOT DIP GALVANIZED	1	1	36

6" STEEL FLANGED U GUARD HOT DIP GALVANIZED

Allied Bolt Products LLC

PART#	DESCRIPTION	PKG QTY	CTN QTY	CTN WT.
9004-65	6" X 5' STEEL FLANGED U GUARD HOT DIP GALVANIZED	1	1	22

7" STEEL FLANGED U GUARD HOT DIP GALVANIZED

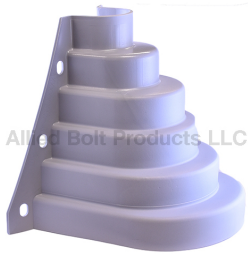
Allied Bolt Products LLC

PART#	DESCRIPTION	PKG QTY	CTN QTY	CTN WT.
9004-75	7" X 5' STEEL FLANGED U GUARD HOT DIP GALVANIZED	1	1	25



Poleline Cable TV Hardware Catalog

May 12, 2020



Allied Bolt Products LLC

Plastic U-Guard Adaptor

PLASTIC U-GUARD ADAPTOR

PART#	DESCRIPTION	PKG QTY	CTN QTY	CTN WT.
9001	PLASTIC U-GUARD ADAPTOR FITS 2"-6" PVC U GUARDS	10	1	7

Drive Hooks



Allied Bolt Products LLC

Drive Hook

DRIVE HOOK

PART#	DESCRIPTION	PKG QTY	CTN QTY	CTN WT.
2001	5/16" X 3-1/2" DRIVE HOOK	500	1	53
920	7/16" X 4-3/4" DRIVE HOOK	25	8	51
9200	7/16" X 4-3/4" STAINLESS DRIVE HOOK	25	8	51

Guy Hook Attachments



Allied Bolt Products LLC

B Guy Hook

B GUY HOOK

PART#	DESCRIPTION	PKG QTY	CTN QTY	CTN WT.
5060	5/8" B GUY HOOK	25	1	38
5061	3/4" B GUY HOOK	25	1	46
5062	1" B GUY HOOK	10	1	32



Allied Bolt Products LLC

One Bolt Guy Attachment

ONE BOLT GUY ATTACHMENT

PART#	DESCRIPTION	PKG QTY	CTN QTY	CTN WT.
8070	ONE BOLT GUY ATTACHMENT	25	1	25



Allied Bolt Products LLC

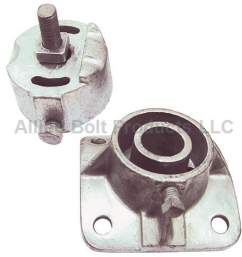
Sidewalk Guying Fixture

SIDEWALK GUY FIXTURE FOR 2" PIPE

PART#	DESCRIPTION	PKG QTY	CTN QTY	CTN WT.
1429	POLE PLATE AND END FITTING FOR 2" PIPE KIT	1	1	5
1436	POLE PLATE FOR SIDEWALK GUYING FIXTURE FOR 2" PIPE	5	1	25
1437	END FITTING FOR SIDEWALK GUYING FIXTURE FOR 2" PIPE	5	1	15

Poleline Cable TV Hardware Catalog

May 12, 2020



SIDEWALK GUY FIXTURE FOR 2-1/2" PIPE

PART#	DESCRIPTION	PKG QTY	CTN QTY	CTN WT.
1450	POLE PLATE AND END FITTING FOR 2-1/2" PIPE KIT	1	1	5
1420	POLE PLATE FOR SIDEWALK GUYING FIXTURE FOR 2-1/2" PIPE	5	1	30
1421	END FITTING FOR SIDEWALK GUY FIXTURE FOR 2-1/2" PIPE	5	1	16

Nuts and Lock Nuts



Regular Square Nut

REGULAR SQUARE NUT

PART#	DESCRIPTION	PKG QTY	CTN QTY	CTN WT.
90044	3/8" REGULAR SQUARE NUT	100	8	32
8205	1/2" REGULAR SQUARE NUT	100	4	22
8206	5/8" REGULAR SQUARE NUT	100	1	11
8200	3/4" REGULAR SQUARE NUT	100	1	16
8201	7/8" REGULAR SQUARE NUT	100	1	28
8375	1" REGULAR SQUARE NUT	50	1	18

Pole Plates



Lift Plate

LIFT PLATE

PART#	DESCRIPTION	PKG QTY	CTN QTY	CTN WT.
5182	2 HOLE LIFT PLATE	25	1	31
2820	3 HOLE LIFT PLATE	50	1	54

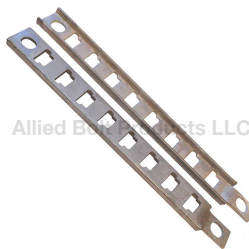
Underground Racks



Cable Rack Hook

CABLE RACK HOOK

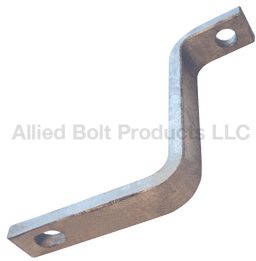
PART#	DESCRIPTION	PKG QTY	CTN QTY	CTN WT.
9600-4	4" CABLE RACK HOOK	100	1	43
9600-7	7-1/2" CABLE RACK HOOK	50	1	54
9600-10L	10" CABLE RACK HOOK	51	1	50
9600-10	10" CABLE RACK HOOK HEAVY DUTY	50	1	50
9600-14	14" CABLE RACK HOOK	25	1	40
9600-18	18" CABLE RACK HOOK	10	1	28



Underground Cable Rack

CABLE RACK WITH HOLE

PART#	DESCRIPTION	PKG QTY	CTN QTY	CTN WT.
9601-8	15" CABLE RACK WITH 8 'T' SLOTS	50	1	74
9601-14	24" CABLE RACK WITH 14 'T' SLOTS	10	1	20
9601-18	30" CABLE RACK WITH 18 'T' SLOTS	10	1	28
9601-37	55-1/4" CABLE RACK WITH 37 'T' SLOTS	1	1	6
9601-43	64-1/4" CABLE RACK WITH 43 'T' SLOTS	10	1	65
9601-47	70-1/4" CABLE RACK WITH 47 'T' SLOTS	1	1	7



Allied Bolt Products LLC

Cable Rack Support
CABLE RACK SUPPORT

PART#	DESCRIPTION	PKG QTY	CTN QTY	CTN WT.
9610	3-5/8" X 4-1/4" X 2-1/4" CABLE RACK SUPPORT	25	1	57
9611	6-9/16" X 5-3/4" X 2-5/8" CABLE RACK SUPPORT	25	1	56



Allied Bolt Products LLC

Cable Rack Clip
Cable Rack Clip

PART#	DESCRIPTION	PKG QTY	CTN QTY	CTN WT.
9615	CABLE RACK CLIP	100	4	2

Lag Screws



Allied Bolt Products LLC

Drive Screw
HEX HEAD DRIVE SCREW REGULAR POINT

PART#	DESCRIPTION	PKG QTY	CTN QTY	CTN WT.
358	1/4" X 2" HEX HEAD DRIVE SCREW REGULAR POINT	50	16	21
367	1/4" X 2-1/2" HEX HEAD DRIVE SCREW REGULAR POINT	50	16	32



Allied Bolt Products LLC

SQUARE HEAD DRIVE SCREW REGULAR POINT

PART#	DESCRIPTION	PKG QTY	CTN QTY	CTN WT.
372	1/4" X 2-1/2" SQUARE HEAD DRIVE SCREW REGULAR POINT	50	16	32
377	5/16" X 3" SQUARE HEAD DRIVE SCREW REGULAR POINT	50	8	26
530	3/8" X 2-1/2" SQUARE DRIVE SCREW REGULAR POINT	50	4	17
531	3/8" X 4" SQUARE HEAD DRIVE SCREW REGULAR POINT	50	4	26
532	1/2" X 4" SQUARE HEAD DRIVE SCREW REGULAR POINT	50	4	43



Allied Bolt Products LLC

SQUARE HEAD FETTER DRIVE SCREW DRIVE POINT

PART#	DESCRIPTION	PKG QTY	CTN QTY	CTN WT.
3760	3/8" X 3" SQUARE HEAD FETTER DRIVE SCREW DRIVE POINT	50	4	23
378	3/8" X 4" SQUARE HEAD FETTER DRIVE SCREW DRIVE POINT	50	4	26
37605	1/2" X 3" SQUARE HEAD FETTER DRIVE SCREW DRIVE POINT	50	4	33
529	1/2" X 4" SQUARE HEAD FETTER DRIVE SCREW DRIVE POINT	50	4	43
528	1/2" X 4-1/2" SQUARE HEAD DRIVE SCREW DRIVE POINT	50	4	47
7850	5/8" X 6" SQUARE HEAD FETTER DRIVE SCREW DRIVE POINT	50	1	30



Allied Bolt Products LLC

SQUARE HEAD TWIST DRIVE SCREW DRIVE POINT

PART#	DESCRIPTION	PKG QTY	CTN QTY	CTN WT.
5290	1/2" X 4" SQUARE HEAD TWIST DRIVE SCREW DRIVE POINT	50	4	43
379	1/2" X 4-1/2" SQUARE HEAD TWIST DRIVE SCREW DRIVE POINT	200	1	47
743	1/2" X 6-1/2" SQUARE HEAD TWIST DRIVE SCREW DRIVE POINT	100	1	37



Allied Bolt Products LLC

Coach Screw (Square Head Lag Screw)

COACH SCREW

PART#	DESCRIPTION	PKG QTY	CTN QTY	CTN WT.
129	1/4" X 2" COACH SCREW	25	32	22
522	1/4" X 2" COACH SCREW	50	16	21
523	1/4" X 2-1/2" COACH SCREW	50	16	27
130	5/16" X 2-1/2" COACH SCREW	25	16	20
131	5/16" X 3" COACH SCREW	50	8	23
7000	3/8" X 1-3/4" COACH SCREW	100	4	25



Allied Bolt Products LLC

Hex Lag Screw

1/4" HEX LAG SCREW

PART#	DESCRIPTION	PKG QTY	CTN QTY	CTN WT.
932	1/4" X 1" HEX LAG SCREW	100	16	24
870	1/4" X 1-1/4" HEX LAG SCREW	100	16	28
85	1/4" X 1-1/2" HEX LAG SCREW	100	16	32
719	1/4" X 2" HEX LAG SCREW	100	8	20
933	1/4" X 2-1/2" HEX LAG SCREW	100	4	15
762	1/4" X 3" HEX LAG SCREW	100	4	15
765	1/4" X 3-1/2" HEX LAG SCREW	50	4	11
766	1/4" X 4" HEX LAG SCREW	50	4	8
776	1/4" X 4-1/2" HEX LAG SCREW	50	4	13
780	1/4" X 5" HEX LAG SCREW	50	4	15
781	1/4" X 6" HEX LAG SCREW	50	4	18



Allied Bolt Products LLC

5/16" HEX LAG SCREW

PART#	DESCRIPTION	PKG QTY	CTN QTY	CTN WT.
47	5/16" X 1-1/2" HEX LAG SCREW	100	8	26
768	5/16" X 2" HEX LAG SCREW	100	4	18
230	5/16" X 2-1/2" HEX LAG SCREW	50	8	20
783	5/16" X 3" HEX LAG SCREW	100	4	22
784	5/16" X 3-1/2" HEX LAG SCREW	50	4	17
785	5/16" X 4" HEX LAG SCREW	50	4	19
786	5/16" X 4-1/2" HEX LAG SCREW	50	4	11
789	5/16" X 5" HEX LAG SCREW	50	4	19
791	5/16" X 6" HEX LAG SCREW	50	4	15



Allied Bolt Products LLC

3/8" HEX LAG SCREW

PART#	DESCRIPTION	PKG QTY	CTN QTY	CTN WT.
2003	3/8" X 1" HEX LAG SCREW	50	8	36
579	3/8" X 1-1/2" HEX LAG SCREW	100	8	36
721	3/8" X 2" HEX LAG SCREW	100	4	26
170	3/8" X 2-1/2" HEX LAG SCREW	100	4	28
722	3/8" X 3" HEX LAG SCREW	100	4	36
792	3/8" X 3-1/2" HEX LAG SCREW	50	4	24
582	3/8" X 4" HEX LAG SCREW	50	4	25
793	3/8" X 4-1/2" HEX LAG SCREW	50	4	30
794	3/8" X 5" HEX LAG SCREW	50	4	33
795	3/8" X 6" HEX LAG SCREW	50	4	30



1/2" HEX LAG SCREW

PART#	DESCRIPTION	PKG QTY	CTN QTY	CTN WT.
1686	1/2" X 1-1/2" HEX LAG SCREW	50	8	49
720	1/2" X 2" HEX LAG SCREW	100	4	46
796	1/2" X 2-1/2" HEX LAG SCREW	50	4	35
581	1/2" X 3" HEX LAG SCREW	50	4	41
797	1/2" X 3-1/2" HEX LAG SCREW	50	4	46
580	1/2" X 4" HEX LAG SCREW	50	4	44
584	1/2" X 4-1/2" HEX LAG SCREW	50	1	11
588	1/2" X 5" HEX LAG SCREW	50	4	63
589	1/2" X 6" HEX LAG SCREW	50	1	14
590	1/2" X 7" HEX LAG SCREW	50	1	18



5/8" HEX LAG SCREW

PART#	DESCRIPTION	PKG QTY	CTN QTY	CTN WT.
1507	5/8" X 5" HEX LAG SCREW	25	4	42



Hex Lag Screw Drive Point WITH Permaseal Washer

HEX LAG SCREW DRIVE POINT WITH PERMASEAL™ WASHER

PART#	DESCRIPTION	PKG QTY	CTN QTY	CTN WT.
7190DW	1/4" X 2" HEX LAG SCREW DRIVE POINT WITH PERMASEAL™ WASHER	1000	1	33
7191DW	1/4" X 2-1/2" HEX LAG SCREW DRIVE POINT WITH PERMASEAL™ WASHER	1000	1	35
7192DW	1/4" X 3" HEX LAG SCREW DRIVE POINT WITH PERMASEAL™ WASHER	1000	1	39
1710DW	1/4" X 4" HEX LAG SCREW DRIVE POINT WITH PERMASEAL™ WASHER	500	1	35



Hex Lag Screw w/ Permaseal™ Washer

HEX LAG SCREW W/ PERMASEAL WASHER

PART#	DESCRIPTION	PKG QTY	CTN QTY	CTN WT.
7190	1/4" X 2" HEX LAG SCREW W/ PERMASEAL™ WASHER	1000	1	14
7191	1/4" X 2-1/2" HEX LAG SCREW W/ PERMASEAL™ WASHER	1000	1	18
7192	1/4" X 3" HEX LAG SCREW W/ PERMASEAL™ WASHER	1000	1	40
1710	1/4" X 4" HEX LAG SCREW W/ PERMASEAL™ WASHER	500	1	24

Staples

Galvanized Staple (Rolled Point)

STAPLE GALVANIZED (ROLLED POINT)



PART#	DESCRIPTION	PKG QTY	CTN QTY	CTN WT.
25112	1" X 3/8" X .125" ROLLED POINT GALVANIZED STAPLE	100	32	24
25116	1-1/2" X 3/8" X .148" ROLLED POINT GALVANIZED STAPLE	100	8	12
25021	1-3/4" X 5/8" X .187" ROLLED POINT GALVANIZED STAPLE	100	4	12
25117	1-3/4" X 3/8" X .148" ROLLED POINT GALVANIZED STAPLE	100	4	7
25115	2" X 1/2" X .162" ROLLED POINT GALVANIZED STAPLE	100	8	20
25003	2" X 5/8" X .162" ROLLED POINT GALVANIZED STAPLE	100	4	10
25022	2" X 3/4" X .187" ROLLED POINT GALVANIZED STAPLE	100	4	10
25004	2" X 1-1/16" X .187" ROLLED POINT GALVANIZED STAPLE	100	4	51
25023	2-1/4" X 7/8" X .187" ROLLED POINT GALVANIZED STAPLE	100	4	20
25024	2-1/2" X 1.20" X .250" ROLLED POINT GALVANIZED STAPLE	100	1	6
25005	3 X 1-1/16 X .250 ROLLED POINT GALVANIZED STAPLE	100	4	33
25113	3" X 1-1/2" X .25" ROLLED POINT GALVANIZED STAPLE	100	4	34
25114	3-1/2" X 1-3/4" X .25" ROLLED POINT GALVANIZED STAPLE	100	1	10

COPPER COATED STAPLE (ROLLED POINT)

COPPER COATED STAPLE (ROLLED POINT)



PART#	DESCRIPTION	PKG QTY	CTN QTY	CTN WT.
25002	1" X 1/4" X .114" ROLLED POINT COPPER COATED STAPLE	100	40	20
25001	1-1/4" X 1/4" X .114" ROLLED POINT COPPER COATED STAPLE	100	32	21
25007	1-1/2" X 5/16" X .144" ROLLED POINT COPPER COATED STAPLE	100	16	20
25008	1-1/2" X 3/8" X .144" ROLLED POINT COPPER COATED STAPLE	100	8	11
25009	1-3/4" X 3/8" X .144" ROLLED POINT COPPER COATED STAPLE	100	8	12
25010	2" X 1/2" X .162" ROLLED POINT COPPER COATED STAPLE	100	8	14
25011	2" X 5/8" X .162" ROLLED POINT COPPER COATED STAPLE	100	4	10
25012	2" X 1-1/16" X .187" ROLLED POINT COPPER COATED STAPLE	100	4	13
25013	2-1/2" X 1/2" X .250" ROLLED POINT COPPER COATED STAPLE	100	4	15
25014	2-1/2" X 1-1/16" X .187" ROLLED POINT COPPER COATED STAPLE	100	1	4
25015	3" X 3/4" X .250" ROLLED POINT COPPER COATED STAPLE	100	1	8
25016	3" X 1" X .250" ROLLED POINT COPPER COATED STAPLE	100	1	8
25017	3" X 1-1/16" X .250" ROLLED POINT COPPER COATED STAPLE	100	1	9
25018	3" X 1-1/2" X .250" ROLLED POINT COPPER COATED STAPLE	100	1	8
25019	3-1/2" X 1-1/2" X .250" ROLLED POINT COPPER COATED STAPLE	100	1	10

Pole Steps

Detachable Pole Step & Mount With Lag Screw

DETACHABLE POLE STEP



PART#	DESCRIPTION	PKG QTY	CTN QTY	CTN WT.
843	MOUNT WITH LAG SCREW	50	1	31
844	DETACHABLE POLE STEP	50	1	31
841	ENLONGATED DETACHABLE POLE STEP	50	1	36

Spike Head Pole Step

SPIKE HEAD POLE STEP



PART#	DESCRIPTION	PKG QTY	CTN QTY	CTN WT.
5800	5/8" X 10" SPIKE HEAD POLE STEP	50	1	45
8650	3/4" X 14" SPIKE HEAD POLE STEP	30	1	55



Fiberglass Pole Step

FIBERGLASS POLE STEP WITH FLAT SQUARE WASHER

PART#	DESCRIPTION	PKG QTY	CTN QTY	CTN WT.
6515	FIBERGLASS POLE STEP WITH FLAT SQUARE WASHER 10"	5	1	20



FIBERGLASS POLE STEP WITH CURVED SQUARE WASHER

PART#	DESCRIPTION	PKG QTY	CTN QTY	CTN WT.
6516	FIBERGLASS POLE STEP WITH CURVED SQUARE WASHER 10"	5	1	20



FIBERGLASS POLE STEP FOR POLE W/ ROUND WASHER

PART#	DESCRIPTION	PKG QTY	CTN QTY	CTN WT.
6512	FIBERGLASS POLE STEP FOR 8" POLE W/ ROUND WASHER	25	1	50
6507	FIBERGLASS POLE STEP FOR 10" POLE W/ ROUND WASHER	25	1	50

Washers



Square Washer

SQUARE WASHER FOR 1/2" BOLT

PART#	DESCRIPTION	PKG QTY	CTN QTY	CTN WT.
11502	1/8" X 2" SQUARE WASHER FOR 1/2" BOLT	100	4	48



SQUARE WASHER FOR 5/8" BOLT

PART#	DESCRIPTION	PKG QTY	CTN QTY	CTN WT.
11501	1/8" X 2" SQUARE WASHER FOR 5/8" BOLT	100	4	48
11500	3/16" X 2-1/4" SQUARE WASHER FOR 5/8" BOLT	100	2	48
11559	1/4" X 3-1/2" SQUARE WASHER FOR 5/8" BOLT	50	1	58
11500SS	3/16" X 2-1/4" STAINLESS STEEL SQUARE WASHER FOR 5/8" BOLT	100	2	49



SQUARE WASHER FOR 3/4" BOLT

PART#	DESCRIPTION	PKG QTY	CTN QTY	CTN WT.
11550	3/16" X 2-1/4" SQUARE WASHER FOR 3/4" BOLT	100	2	48
11550SS	3/16" X 2-1/4" STAINLESS STEEL SQUARE WASHER FOR 3/4" BOLT	100	2	44
11551	1/4" X 3" SQUARE WASHER FOR 3/4" BOLT	100	1	57
11556	3/8" X 3-1/2" SQUARE WASHER FOR 3/4" BOLT	50	1	56
11557	3/16" X 4" SQUARE WASHER FOR 3/4" BOLT	50	1	33

SQUARE WASHER FOR 7/8" BOLT



PART#	DESCRIPTION	PKG QTY	CTN QTY	CTN WT.
11600	3/8" X 3-1/2" SQUARE WASHER FOR 7/8" BOLT	50	1	31
11553	5/16" x 3" SQUARE WASHER FOR 7/8" BOLT	75	1	52
11549	1/4" x 4" SQUARE WASHER FOR 7/8" BOLT	50	1	44

SQUARE WASHER FOR 1" BOLT



PART#	DESCRIPTION	PKG QTY	CTN QTY	CTN WT.
11705	1/2" X 4" SQUARE WASHER FOR 1" BOLT	25	1	47
11700	3/8" X 6" SQUARE WASHER FOR 1" BOLT	15	1	58

STAINLESS STEEL SQUARE WASHER



PART#	DESCRIPTION	PKG QTY	CTN QTY	CTN WT.
11500SS	3/16" X 2-1/4" STAINLESS STEEL SQUARE WASHER FOR 5/8" BOLT	100	2	49
11550SS	3/16" X 2-1/4" STAINLESS STEEL SQUARE WASHER FOR 3/4" BOLT	100	2	44

Curved Washer

5/8" CURVED WASHER



PART#	DESCRIPTION	PKG QTY	CTN QTY	CTN WT.
11552	CURVED WASHER 2-1/4" X 2-1/4" X 11/16" HOLE X 3/16" THICK	50	4	42
11555	CURVED WASHER 2-1/2" X 2-1/2" X 11/16" HOLE X 3/16" THICK	50	4	56
233	CURVED WASHER 3" X 3" X 11/16" HOLE X 1/4" THICK	50	2	65

3/4" CURVED WASHER



PART#	DESCRIPTION	PKG QTY	CTN QTY	CTN WT.
244	CURVED WASHER 3" X 3" X 13/16" HOLE X 1/4" THICK	50	2	54
231	CURVED WASHER 3-1/8" X 3-1/4" X 13/16" HOLE X 1/4" THICK	50	2	58
221	CURVED WASHER 4" X 4" X 13/16" HOLE X 1/4" THICK	50	1	42
220	CURVED WASHER 4" X 4" X 13/16" HOLE X 3/8" THICK	25	1	42

7/8" CURVED WASHER



PART#	DESCRIPTION	PKG QTY	CTN QTY	CTN WT.
238	CURVED WASHER 3-3/8" X 3-1/2" X 15/16" HOLE X 3/8" THICK	50	1	53
228	CURVED WASHER 4" X 4" X 15/16" HOLE X 1/4" THICK	50	1	59

1" CURVED WASHER



PART#	DESCRIPTION	PKG QTY	CTN QTY	CTN WT.
237	CURVED WASHER 3-3/8" X 3-1/2" X 1-1/8" HOLE X 3/8" THICK	50	1	53

USS Round Washer Galvanized

USS ROUND WASHER GALVANIZED



PART#	DESCRIPTION	PKG QTY	CTN QTY	CTN WT.
11001	3/16" USS ROUND WASHER GALVANIZED (1/4" ID X 9/16" OD X 3/64" THICK)	100	40	18
653	1/4" USS ROUND WASHER GALVANIZED (5/16" ID X 3/4" OD X 1/16" THICK)	100	40	22
11002	5/16" USS ROUND WASHER GALVANIZED (3/8" ID X 7/8" OD X 5/64" THICK)	100	40	56
249	3/8" USS ROUND WASHER GALVANIZED (7/16" ID X 1" OD X 5/64" THICK)	100	32	56
249A	3/8" USS ROUND WASHER GALVANIZED (7/16" ID X 1" OD X 5/64" THICK)	250	8	35
104	1/2" USS ROUND WASHER GALVANIZED (9/16" ID X 1-3/8" OD X 7/64" THICK)	50	16	32
11003	5/8" USS ROUND WASHER GALVANIZED (3/4" ID X 1-3/4" OD X 9/64" THICK)	100	4	31
11003A	5/8" USS ROUND WASHER GALVANIZED (3/4" ID X 1-3/4" OD X 9/64" THICK)	500	1	29
7017	3/4" USS ROUND WASHER GALVANIZED (7/8" ID X 2" OD X 5/32" THICK)	100	4	39
7015	7/8" USS ROUND WASHER GALVANIZED (15/16" ID X 2-1/4" OD X 11/64" THICK)	50	4	31
7011	1" USS ROUND WASHER GALVANIZED (1-1/16" ID X 2-1/2" OD X 11/64" THICK)	50	4	10
976100	1-1/4" x 3" USS ROUND WASHER GALVANIZED (1-3/8" ID X 3" OD X 11/64" THICK)	50	1	14

ADSS Fiber Cable Hardware

Aluminum Trunnion Support for ADSS Fiber Cable

ALUMINUM TRUNNION SUPPORT FOR ADSS FIBER CABLE



PART#	DESCRIPTION	PKG QTY	CTN QTY	CTN WT.
9700-1	TRUNNION CLAMP FOR ADSS FIBER .356"-.459" BLACK	10	1	24
9700-3	TRUNNION CLAMP FOR ADSS FIBER .459"-.555" ORANGE	10	1	24
9700-5	TRUNNION CLAMP FOR ADSS FIBER .551"-.649" BLUE	10	1	24
9700-7	TRUNNION CLAMP FOR ADSS FIBER .649"-.748" WHITE	10	1	24