



Pipe Hangers *New!*

One-piece.
Non-metallic. UV rated.



NM1000



NM2000



NM2080

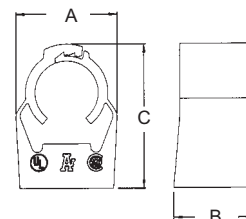
QuickLATCH™

Use it anywhere you would
use a pipe hanger!

CATALOG NUMBER	UPC/DCI MFG #018997	NAE SIZE*	RIGID SIZE	EMT SIZE	LT SIZE	FLEX SIZE	ENT SIZE	COPPER TUBING	COPPER PIPE	STD PKG	DIM A	DIM B	DIM C
NM1000	54615	-	-	-	-	-	-	-	-	100	1.563	.777	1.563
NM1900	54514	-	-	-	5/16	-	-	1/2	-	100	.844	.668	1.270
NM2000	54515	-	-	1/2	3/8	-	-	-	3/8	100	.922	.795	1.412
NM2005	54525	1/2	1/2	-	1/2	1/2	-	-	1/2	100	1.077	.795	1.588
NM2010	54516	-	-	3/4	-	-	-	3/4	-	100	1.178	.800	1.667
NM2015	54526	3/4	3/4	-	3/4	3/4	-	-	3/4	100	1.277	.800	1.826
NM2020	54517	-	-	1	-	-	-	1	-	100	1.377	.790	1.983
NM2025	54518	1	1	-	1	1	-	-	1	100	1.582	.830	2.180
NM2030	54528	-	-	1-1/4	-	-	-	1-1/4	-	100	1.700	.820	2.346
NM2040	54519	1-1/4	1-1/4	1-1/2	-	-	-	1-1/2	1-1/4	100	1.830	.830	2.523
NM2045	54544	1-1/2	1-1/2	-	1-1/2	-	-	-	1-1/2	100	2.212	.860	2.846
NM2150	54547	-	-	-	-	-	-	2	-	50	2.640	.910	3.100
NM2050	54520	2	2	2	2	-	-	-	2	50	3.020	.910	3.470
NM2060	54521	2-1/2	2-1/2	2-1/2	2-1/2	-	-	-	-	50	3.460	1.115	5.095
NM2070	54522	3	3	3	3	-	-	-	-	25	4.224	1.362	6.153
NM2080	54523	3-1/2	3-1/2	3-1/2	3-1/2	-	-	-	-	25	4.720	1.548	7.000
NM2090	54524	4	4	4	4	-	-	-	-	10	5.365	1.743	7.850



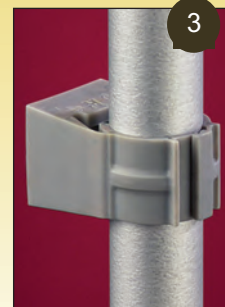
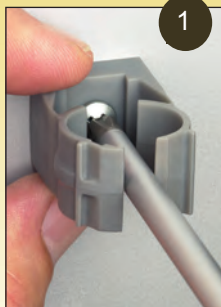
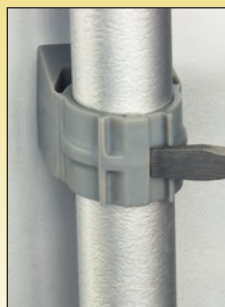
* Rigid sizes also same for IMC and PVC.
For additional information on QuickLATCH
plumbing applications, call or visit our website.



Features and Benefits

- Saves 25 seconds per installation...over 20¢ at \$30.00 per hour labor rate
- Costs the same as a steel pipe hanger with bolt and nut
- Conduit snaps into place, locking automatically
- Accommodates thinwall, rigid conduit, PVC conduit, or copper
- Mounts horizontally or vertically
- UV rated for outdoor application
- Corrosion resistant
- Listed for use in environmental air handling spaces per 2011 NEC code requirement 300-22(c)
- 2-1/2" to 4" hangers feature tabs with openings for the optional securing of a cable tie

Installation Instructions



To Remove

Use a screwdriver to
lift tab.

1. Mount to wall, strut, stud, or threaded rod up to 1/4-20
2. Press pipe down firmly into QuickLATCH to lock it in place
3. That's it!

Scan For Video

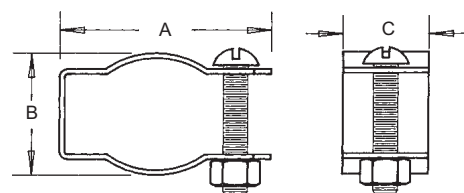


Pipe Hangers

Plated steel.
With nut and bolt.



CATALOG NUMBER	UPC/DCI/NAED MFG #018997	TRADE SIZE	RIGID SIZE	EMT SIZE	STD PKG	DIM A	DIM B	DIM C
2000	02000	0	3/8 x 1/2	1/2	100	1.875	.990	.750
2010	02010	1	3/4	3/4	100	2.175	1.260	.875
2020	02020	2	1	1	100	2.370	1.295	.875
2025	02025	2-1/2 to 3	1-1/4	1-1/4 to 1-1/2	100	3.175	1.965	.875
2040	02040	4	1-1/2	-	100	3.780	2.220	1.065
2050	02050	5	2	2	50	4.100	2.450	1.210
2060	02060	6	2-1/2	2-1/2	50	4.800	3.180	1.240
2070	02070	7	3	3	25	5.375	3.750	1.250
2080	02080	8	3-1/2	3-1/2	25	6.187	4.187	1.270
2090	02090	9	4	4	10	6.240	4.430	1.270

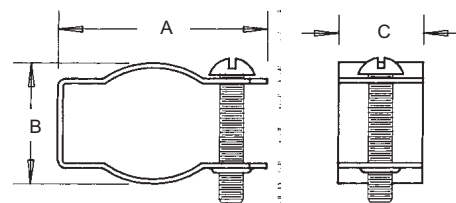


Pipe Hangers

With formed thread in one end of the hanger, nut not required. Plated steel.



CATALOG NUMBER	UPC/DCI/NAED MFG #018997	TRADE SIZE	RIGID SIZE	EMT SIZE	STD PKG	DIM A	DIM B	DIM C
2200	22000	0	3/8 x 1/2	1/2	100	1.875	.990	.750
2210	22100	1	3/4	3/4	100	2.175	1.260	.875
2220	22200	2	1	1	100	2.370	1.295	.875
2225	22250	2-1/2	-	1-1/4	100	3.175	1.965	.875
2230	22300	3	1-1/4	1-1/2	100	3.255	1.875	.875
2240	22400	4	1-1/2	-	100	3.780	2.220	1.065
2250	22500	5	2	2	50	4.100	2.450	1.210



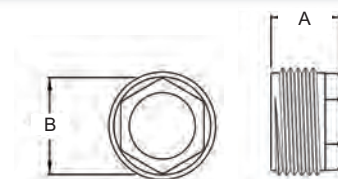


Reducing Bushings

Zinc die-cast.



CATALOG NUMBER	UPC/DCI/NAED MFG #018997	TRADE SIZE	UNIT PKG	STD PKG	DIM A	DIM B
522	00522	3/4 x 1/2	50	500	.650	.920
523	00523	1 x 1/2	25	100	.715	1.125
524	00524	1 x 3/4	25	100	.715	1.125
525	00525	1-1/4 x 1/2	25	25	.820	1.470
526	00526	1-1/4 x 3/4	25	25	.820	1.470
527	00527	1-1/4 x 1	25	25	.820	1.470
528	00528	1-1/2 x 1/2	25	25	.850	1.700
529	00529	1-1/2 x 3/4	25	25	.850	1.700
530	00530	1-1/2 x 1	25	25	.850	1.700
531	00531	1-1/2 x 1-1/4	25	25	.850	1.700
532	00532	2 x 1/2	10	10	.970	2.230
533	00533	2 x 3/4	10	10	.970	2.230
534	00534	2 x 1	10	10	.970	2.230
535	00535	2 x 1-1/4	10	10	.970	2.230
536	00536	2 x 1-1/2	10	10	.970	2.230



Larger Reducing Bushings

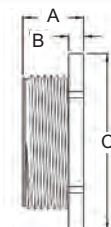
Zinc die-cast.



CATALOG NUMBER	UPC/DCI/NAED MFG #018997	TRADE SIZE	UNIT PKG	STD PKG	DIM A	DIM B	DIM C
1274	01274	2-1/2 x 1-1/4	5	5	2.090	.430	2.845
1275	01275	2-1/2 x 1-1/2	5	5	1.125	.430	2.820
1276	01276	2-1/2 x 2	5	5	1.200	.300	3.485
1283	01283	3 x 1	5	5	1.785	.500	4.075
1284	01284	3 x 1-1/4	5	5	2.100	.410	3.445
1285	01285	3 x 1-1/2	5	5	2.020	.440	3.460
1286	01286	3 x 2	5	5	2.000	.400	3.380
1287	01287	3 x 2-1/2	5	5	1.390	.375	4.395
1296	01296	3-1/2 x 2	2	2	1.905	.565	4.575
1297	01297	3-1/2 x 2-1/2	2	2	2.020	.450	3.945
1298	01298	3-1/2 x 3	2	2	1.385	.380	4.920
1307	01307	4 x 2-1/2	2	2	2.070	.570	5.250
1308	01308	4 x 3	2	2	1.775	.500	5.250
1309	01309	4 x 3-1/2	2	2	1.400	.375	5.420



Reducing bushings are rain tight in threaded hubs. Also, reducing bushings, unlike reducing washers, maintain grounding path and are able to pass UL high current testing.

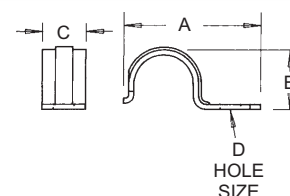


1-Hole Rigid Straps

Snap-on type. Plated steel.



CATALOG NUMBER	UPC/DCI/NAED MFG #018997	TRADE SIZE	UNIT PKG	STD PKG	DIM A	DIM B	DIM C	DIM D
340	00340	1/2	50	500	1.915	.875	.625	.250
341	00341	3/4	50	500	2.230	1.050	.750	.250
342	00342	1	25	250	2.615	1.295	.875	.312
343	00343	1-1/4	25	100	2.975	1.630	.875	.375
344	00344	1-1/2	25	100	3.660	1.860	1.000	.437
345	00345	2	25	100	4.150	2.240	1.125	.562
346	00346	2-1/2	25	25	4.927	2.958	1.245	.550
347	00347	3	25	25	5.560	3.441	1.250	.550
348	00348	3-1/2	10	10	6.337	3.951	1.250	.575
349	00349	4	10	10	6.811	4.441	1.240	.575

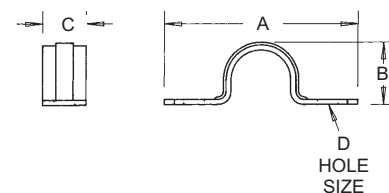


2-Hole Rigid Straps

Snap-on type. Plated steel.



CATALOG NUMBER	UPC/DCI/NAED MFG #018997	TRADE SIZE	UNIT PKG	STD PKG	DIM A	DIM B	DIM C	DIM D
350	00350	1/2	50	500	2.440	.900	.620	.200
351	00351	3/4	50	500	2.810	1.060	.690	.200
352	00352	1	25	250	3.350	1.365	.750	.275
353	00353	1-1/4	25	100	4.110	1.700	.865	.275
354	00354	1-1/2	25	100	4.450	1.960	.940	.275
355	00355	2	25	150	5.350	2.240	.995	.325
356	00356	2-1/2	25	25	6.025	2.855	.985	.345
357	00357	3	25	25	6.460	3.425	.995	.345
358	00358	3-1/2	10	10	7.300	3.925	.990	.345
359	00359	4	10	10	7.895	4.435	.995	.345



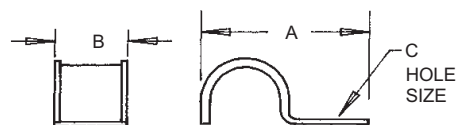


1-Hole Straps

For rigid conduit. Malleable.



CATALOG NUMBER	UPC/DCI/NAED MFG #018997	TRADE SIZE	UNIT PKG	STD PKG	DIM A	DIM B	DIM C
3100	03100	1/2	50	500	1.437	.625	.312
3101	03101	3/4	50	500	1.750	.750	.312
3102	03102	1	25	500	2.125	.937	.312
3103	03103	1-1/4	25	250	2.375	1.062	.437
3104	03104	1-1/2	25	250	2.750	1.062	.500
3105	03105	2	25	150	3.937	1.250	.562
3106	03106	2-1/2	25	25	3.937	1.250	.562
3107	03107	3	25	25	5.187	1.750	.562
3108	03108	3-1/2	10	10	5.562	2.125	.750
3109	03109	4	10	10	6.500	2.250	.750



Clamp Back Spacer

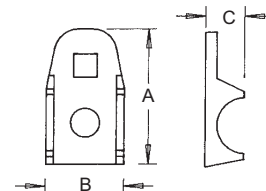
Malleable.



CATALOG NUMBER	UPC/DCI/NAED MFG #018997	TRADE SIZE	UNIT PKG	STD PKG	DIM A	DIM B	DIM C
CB1	30100	1/2	50	500	2.062	1.000	.500
CB2	30105	3/4	50	500	2.375	1.062	.500
CB3	30110	1	25	500	3.000	1.250	.562
CB4	30115	1-1/4	25	250	3.500	1.500	.653
CB5	30120	1-1/2	25	250	4.000	1.600	.812
CB6	30125	2	25	150	4.750	2.000	.986
CB7	30130	2-1/2	25	25	5.800	2.437	.812
CB8	30135	3	25	25	6.687	2.625	.875
CB9	30140	3-1/2	10	10	7.125	2.875	1.062
CB10	30145	4	10	10	8.875	3.062	1.062



E186443





19.5" & 26" Supports for Outdoor Light Fixtures

For installing a light fixture and/or GFCI devices outdoors. UV rated plastic for long outdoor life. Four non-chipping colors.



GP19B



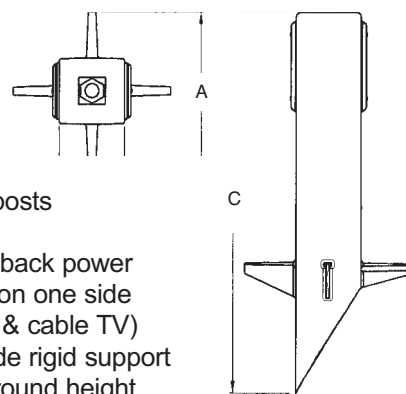
GP26G

CATALOG NUMBER	UPC/DCI/NAED MFG #018997	DESCRIPTION	UNIT PKG	STD PKG	DIM A	DIM B	DIM C
GP19B	77086	Black	1	6	8.110	3.361	19.500
GP19BR	77087	Bronze	1	6	8.110	3.361	19.500
GP19G	77088	Green	1	6	8.110	3.361	19.500
GP19W	77089	White	1	6	8.110	3.361	19.500
GP26B	77090	Black	1	6	8.110	3.361	26.000
GP26BR	77092	Bronze	1	6	8.110	3.361	26.000
GP26G	77094	Green	1	6	8.110	3.361	26.000
GP26W	77096	White	1	6	8.110	3.361	26.000

Add suffix "GC" to Catalog # when ordering in Canada, for example GP19BGC.



CSA listed with grounding lug.



Features and Benefits

- Molded-in color is permanent – unlike painted posts where lawn equipment chips the color off
- Openings on both sides of the post for back-to-back power
- Low voltage separator provided for Power use on one side and Low Voltage on the other (phone, security, & cable TV)
- Built-in stabilizers need no assembly and provide rigid support
- GP19's stabilizers offer greater use of above ground height
- GP26's taller design provides additional height for wiring devices and increased burial depth
- Angle cut post for easy access to underground wiring
- (2) 1/2" KOs for a UL Listed enclosure

OPENINGS ON BOTH SIDES!



Install one or two GFCI Wiring Devices with Weatherproof Cover...



Or add the Low Voltage Separator and run Low Voltage on one side and Power on the other!

Comes complete with...

Installed 3/4" x 1/2" NPT metal reducing bushing, locknut with copper ground wire for fixture installation, (2) blank device plates, gaskets & screws, plug for top hole (when fixture is not installed), low voltage separator, and removable KO plate.

19.5" Low-Profile Enclosure with Built-in Cover

For use with a GFCI device. Features clear, weatherproof-in-use cover. UV rated plastic for long outdoor life. Four non-chipping colors.

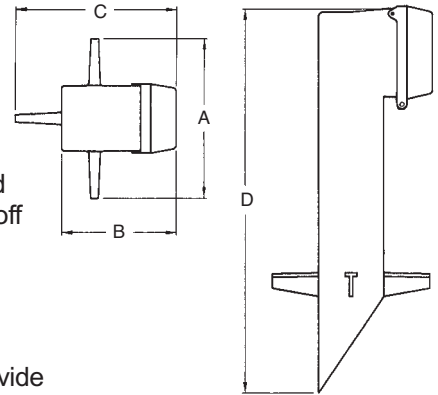


CATALOG NUMBER	UPC/DCI/NAED MFG #018997	DESCRIPTION	UNIT PKG	STD PKG	DIM A	DIM B	DIM C	DIM D
GPD19B	77020	Black	1	6	7.761	6.269	8.177	19.500
GPD19BR	77021	Bronze	1	6	7.761	6.269	8.177	19.500
GPD19G	77022	Green	1	6	7.761	6.269	8.177	19.500
GPD19W	77023	White	1	6	7.761	6.269	8.177	19.500

Add suffix "GC" to Catalog # when ordering in Canada, for example GPD19BGC. Refer to K-18 for replacement cover DBPV1C.



CSA listed with grounding lug.



Features and Benefits

- Molded-in color is permanent – unlike painted posts where lawn equipment chips the color off
- Includes clear cover for weatherproof while-in-use, GFCI and duplex wall plates
- Installed cover, no gasket necessary
- Meets NEC box support requirements
- Built-in stabilizers need no assembly and provide rigid support
- Code approved installation
- No chipping...colorant runs throughout the product
- Extra Duty Rated

Meets 2011 NEC code requirements for 406.9 (B) (1) When "extra-duty" is required.

Compare!



Why Install Boxes This Way...



When You Can Have a Great Looking, Long-Lasting Job Like This!

Comes with...

Built-in weatherproof-while-in-use cover, standard duplex & GFCI cover plates, and removable KO plate.



35" GARD-N-POST™ Bollard Kit

GARD-N-POST with pagoda-style light fixture included. Post is UV rated plastic for long outdoor life. Two non-chipping colors.

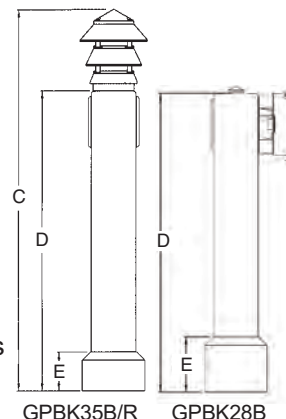
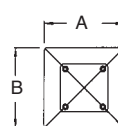
CATALOG NUMBER	UPC/DCI/NAED MFG #018997	DESCRIPTION	UNIT PKG	STD PKG	DIM A	DIM B	DIM C	DIM D	DIM E
GPBK28B	76090	Black	1	1	6.070	6.070	-	28.500	5.000
GPBK35B	77040	Black	1	1	6.070	6.070	35.000	27.000	3.500
GPBK35BR	77041	Bronze	1	1	6.070	6.070	35.000	27.000	3.500

Add suffix "GC" to Catalog # when ordering in Canada, for example GPBK35BGC.



CSA listed with grounding lug.

E170558 LR49636



Features and Benefits

- Molded-in color is permanent – unlike painted posts where lawn equipment chips the color off
- Openings on both sides of the post for back-to-back power
- Low voltage separator provided for Power use on one side and Low Voltage on the other (phone, security, & cable TV)
- Perfect for wood decks, boat docks, and concrete walkways
- Makes a very low cost bollard
- Kit includes everything needed for installation, except anchor bolts, caulking, and bulb.
- Includes Arlington's Large Louvered Pagoda Light Fixture
- (2) combination KOs for a UL Listed enclosure



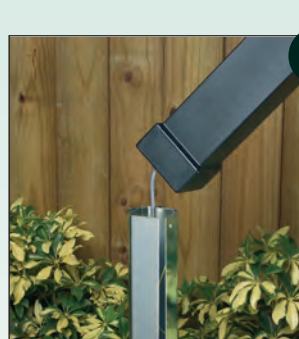
GPBK35B/R

GPBK28B

Installation Instructions



1 Metal support post attaches easily to surface.



2 The non-metallic GARD-N-POST slides over the support post.



3 Both posts are held firmly in place with the supplied screws.



4 Place decorative curb over GARD-N-POST. Slide it down to cover the installation.



5 Press fit spacer to base of lamp.



6 Install pagoda light to post with locknut inside the top of the post. Wire fixture.

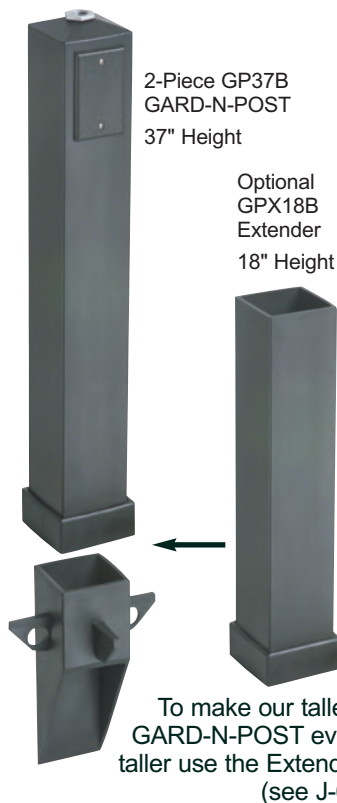
Kit comes with...
GARD-N-POST & metal stabilizer, boot, (pagoda light fixture & decorative spacer or IN-AND-OUT™ cover), (2) blank device plates with gaskets & screws, low voltage separator, and removable KO plate with screws.

Recommended anchors (not included)...
Concrete: (4) 3/8" x 2-1/2 Tapcons®
Cast-In-Place Concrete: (4) 3/8" anchor bolts
Wood Deck: (4) 3/8" bolts with nuts and washers

Tapcons® is a registered trademark of ITW Buildex.

37" GARD-N-POST™ Support for Outdoor Light Fixtures

Two-piece, super tall
GARD-N-POST™. Supports
most light fixtures and/or
GFCI wiring devices. UV rated
plastic for long outdoor life.
Four non-chipping colors.



CATALOG NUMBER	UPC/DCI/NAED MFG #018997	DESCRIPTION	UNIT PKG	STD PKG	DIM A	DIM B	DIM C	DIM D
GP37B	76153	Black	1	4	9.000	4.000	25.000	12.000
GP37BR	76154	Bronze	1	4	9.000	4.000	25.000	12.000
GP37G	76156	Green	1	4	9.000	4.000	25.000	12.000
GP37W	76155	White	1	4	9.000	4.000	25.000	12.000

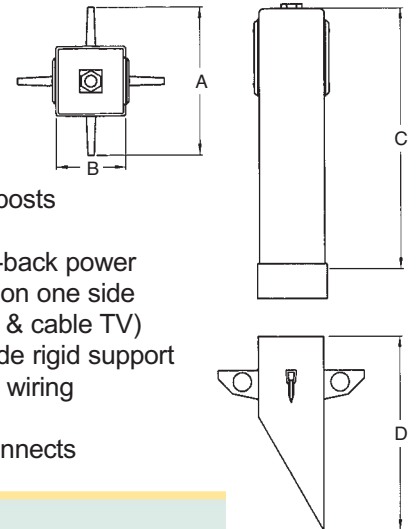
Add suffix "GC" to Catalog # when ordering in Canada, for example GP37BGC.

See GPX18 Extender (optional) on page J-6.



CSA listed with grounding lug.

2-Piece SUPER TALL GARD-N-POST



Features and Benefits

- Molded-in color is permanent – unlike painted posts where lawn equipment chips the color off
- Openings on both sides of the post for back-to-back power
- Low voltage separator provided for Power use on one side and Low Voltage on the other (phone, security, & cable TV)
- Built-in stabilizers need no assembly and provide rigid support
- Angle cut post for easy access to underground wiring
- (2) combination KOs for a UL Listed enclosure
- May be field modified for time clocks and disconnects



To assemble
(with or without
the Extender)
use standard
PVC cement.



Comes complete with...

Installed 3/4" x 1/2" NPT metal reducing bushing, locknut with copper ground wire for fixture installation, (2) blank device plates, gaskets & screws, plug for top hole (when fixture is not installed), low voltage separator, and removable KO plate.



9" Post/Deck Mount Support for Outdoor Light Fixtures

Two-piece. Mounts most light fixtures and/or a GFCI wiring device on a 4x4 post or deck. UV rated plastic for long outdoor life. Four non-chipping colors.



CATALOG NUMBER	UPC/DCI/NAED MFG #018997	DESCRIPTION	UNIT PKG	STD PKG	DIM A	DIM B	DIM C	DIM D
GPD9B	76161	Black	1	6	3.375	3.375	9.000	.250
GPD9BR	76162	Bronze	1	6	3.375	3.375	9.000	.250
GPD9G	76164	Green	1	6	3.375	3.375	9.000	.250
GPD9W	76163	White	1	6	3.375	3.375	9.000	.250

Add suffix "GC" to Catalog # when ordering in Canada, for example GPD9BGC.

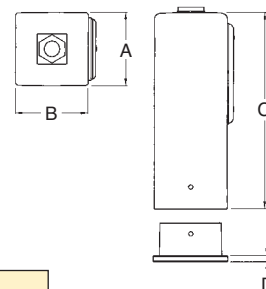


E170558 LR49636

CSA listed with grounding lug.

Features and Benefits

- Molded-in color is permanent – unlike painted posts where lawn equipment chips the color off
- (2) 1/2" KOs for a UL Listed enclosure
- Metal grounding bushing assembly included



Comes complete with...

Installed 3/4" x 1/2" NPT metal reducing bushing, locknut with copper ground wire for fixture installation, blank device plate, gasket & screws, plug for top hole (when fixture is not installed), removable KO plate, and mounting base.



GPD9B shown with light fixture

Install on a 4x4 post...or a dock!

Optional 18" Extender for 37"/40" Support

Add to GP37 in 18" increments for even more height...up to 73".



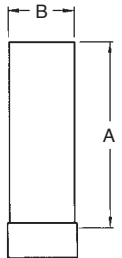
CATALOG NUMBER	UPC/DCI/NAED MFG #018997	DESCRIPTION	UNIT PKG	STD PKG	DIM A	DIM B
GPX18B	76157	Black	1	4	18.000	4.000
GPX18BR	76158	Bronze	1	4	18.000	4.000
BPX18G	76160	Green	1	4	18.000	4.000
GPX18W	76159	White	1	4	18.000	4.000

Use with GP37 on page J-4.



Use the Extender to make the 37"/40" GARD-N-POST even taller: add *one* 18" Extender for a 55" height; add a *second* Extender for 73"! For even more options, the GPX18 may be cut (top end only) to *any* desired height!

When assembling the Extender with GP37 (see J-5) use standard PVC cement.



19.5" Low-Profile Support Just for Outdoor Light Fixtures

For use with light fixtures exclusively. Accommodates most fixture styles. UV rated plastic for long outdoor life. Four non-chipping colors.

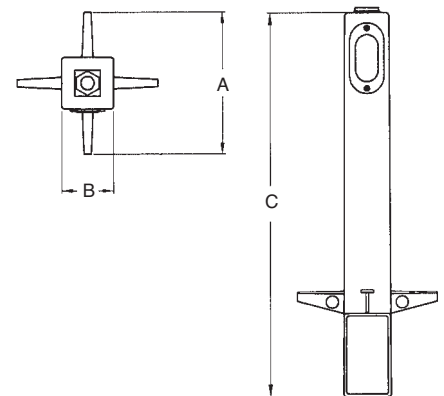


CATALOG NUMBER	UPC/DCI/NAED MFG #018997	DESCRIPTION	UNIT PKG	STD PKG	DIM A	DIM B	DIM C
GPL19B	77000	Black	1	6	7.125	2.250	19.500
GPL19BR	77001	Bronze	1	6	7.125	2.250	19.500
GPL19G	77002	Green	1	6	7.125	2.250	19.500
GPL19W	77003	White	1	6	7.125	2.250	19.500



Features and Benefits

- Molded-in color is permanent – unlike painted posts where lawn equipment chips the color off
- Streamline design...one of our most competitively priced 19.5" GARD-N-POSTs
- Removable 1/2" KO in cover for photocell installation
- Metal bushing with ground wire for 2- or 3-wire fixtures
- Resists damage from lawn equipment



Comes complete with... Access panel cover, gasket, installed 3/4" x 1/2" NPT metal grounding bushing and locknut with copper ground wire for fixture installation.



19.5" Low-Profile Support Just for 3-Wire Outdoor Light Fixtures

Non-metallic bushing exclusively for 3-wire light fixtures. UV rated plastic for long outdoor life.

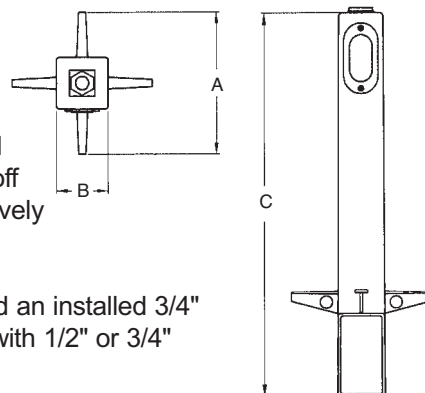


CATALOG NUMBER	UPC/DCI/NAED MFG #018997	DESCRIPTION	UNIT PKG	STD PKG	DIM A	DIM B	DIM C
GPLN19B	69108	Black	1	6	7.125	2.250	19.500
GPLN19BR	76192	Bronze	1	6	7.125	2.250	19.500



Features and Benefits

- Molded-in color is permanent – unlike painted posts where lawn equipment chips the color off
- Streamline design...one of our most competitively priced 19.5" GARD-N-POSTs
- Designed for 3-wire light fixtures
- Comes with a 3/4" NPT threaded opening and an installed 3/4" x 1/2" non-metallic reducing bushing for use with 1/2" or 3/4" NPT fixtures.
- Installed cover



Comes complete with...

Access panel cover, gasket, installed 3/4" x 1/2" NPT non-metallic bushing for fixture installation.

GPLN19B shown with light fixture



15" Low-Profile Support Just for 3-Wire Outdoor Light Fixtures

Non-metallic bushing exclusively for 3-wire light fixtures. UV rated plastic for long outdoor life.

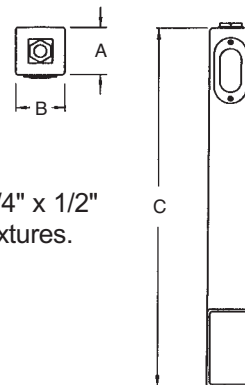


CATALOG NUMBER	UPC/DCI/NAED MFG #018997	DESCRIPTION	STD PKG	DIM A	DIM B	DIM C
GPLN15B	76205	Black	10	2.250	2.250	15.000
GPLN15GR	76181	Gray	10	2.250	2.250	15.000



Features and Benefits

- Streamline design...our most competitively priced GARD-N-POST
- Designed for 3-wire light fixtures
- Comes with a 3/4" NPT threaded opening, and an installed 3/4" x 1/2" non-metallic reducing bushing for use with 1/2" or 3/4" NPT fixtures.
- Installed cover
- Molded-in color is permanent – unlike painted posts where lawn equipment chips the color off



Comes complete with...

Access panel cover, gasket, installed 3/4" x 1/2" NPT non-metallic bushing for fixture installation.



Low Profile IN BOX™ for New Brick Construction

Recessed electrical box with weatherproof-in-use cover for new brick construction.

Non-metallic cover and base. Accepts most single gang wiring devices and uses standard indoor wall plates or a GFCI cover plate.

Box and white cover are textured/paintable. UV rated plastic for long outdoor life.



DBHB1C

Features and Benefits

- IN BOX's one-piece assembly replaces the installation of an electrical box, siding block, and bubble cover assembly
- Built-in anchor tabs seat IN BOX sleeve into mortar for a super secure installation
- Installs in the wall, so less of it shows outside
- Installed, disposable, mud cover extends all the way over the flange, providing maximum protection during construction
- Install option: Cover is removable for easier device installation
- No gaskets required



Bug Plugs ship installed in all IN BOX styles to seal unused cord hole openings.

CATALOG NUMBER	UPC/DCI/NAED MFG #018997	ORIENTATION/COVER COLOR	UNIT	STD	DIM A	DIM B	DIM C	DIM D	DIM E
DBHB1C	77628	Horizontal/Clear	1	4	4.934	7.186	5.160	1.313	3.847
DBHB1W	77630	Horizontal/White	1	4	4.934	7.186	5.160	1.313	3.847

Replacement covers available on page K-17.

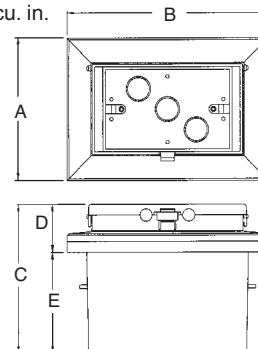


WEATHERPROOF-IN-USE

IN BOX for new brick includes...

Box with weatherproof-in-use cover, installed bug plugs, (1) standard duplex, (1) standard GFCI face plate, installation screws, (1) NM cable connector, and an in-place, disposable mud cover.

22 cu. in.



Installed Shots



Oversized, installed mud cover offers maximum protection because it extends over the entire flange.



Completed installation with weatherproof-in-use cover. DBHB1C shown.

Note: Meets 2011 NEC Section 406-9; for the protection of exterior outlets which require DBHB1BRC. The use of a weatherproof while-in-use cover for all outdoor 15 or 20 AMP receptacles.

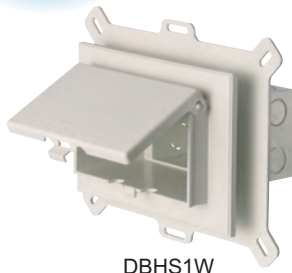
Low Profile IN BOX™ for New Vinyl Siding Construction

One-piece, recessed electrical box with weatherproof-in-use cover for new siding applications. Non-metallic cover and base. Accepts most single gang wiring devices and uses standard indoor wall plates or a GFCI cover plate. Box and white cover are textured/paintable. UV rated plastic for long outdoor life.



See page K-8 for our NEW 2-Gang style!

DBVS1C



DBHS1W

Features and Benefits

- IN BOX's one-piece assembly replaces the installation of an electrical box, siding block, and bubble cover assembly
- Installs in the wall, so less of it shows outside
- Outer flange covers cut ends of siding
- Install option: Cover is removable for easier device installation
- No gaskets required



Bug Plugs ship installed in all IN BOX styles to seal unused cord hole openings.

CATALOG NUMBER	UPC/DCI/NAED MFG #018997	ORIENTATION/ COVER COLOR	SIDING TYPE	UNIT PKG	STD PKG	DIM A	DIM B	DIM C	DIM D	DIM E
DBVS1C	14317	Vertical/Clear	All Types	1	4	9.058	7.012	5.160	1.313	2.879
DBVS1W	14318	Vertical/White	All Types	1	4	9.058	7.012	5.160	1.313	2.879
DBHS1C	77600	Horizontal/Clear	All Types	1	4	7.012	9.058	5.160	1.313	2.879
DBHS1W	77602	Horizontal/White	All Types	1	4	7.012	9.058	5.160	1.313	2.879

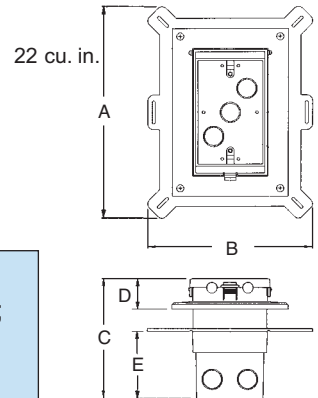
Add suffix "GC" to Catalog # when ordering in Canada, for example DBVS1CGC.

Replacement covers available on page K-17.

2-Gang style available on page K-8.



WEATHERPROOF-IN-USE



IN BOX for new siding includes...

Box with weatherproof-in-use cover; installed bug plugs; (1) standard duplex and (1) standard GFCI face plate; installation screws; and (1) NM cable connector.

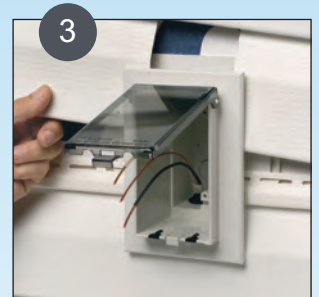
Installation Instructions



1 Cut a 3-1/4" x 5-1/2" hole in substrate. Pull wiring.



2 Install NM cable connector and wire, attach IN BOX to substrate.



3 Install siding, inserting the cut ends of the siding under the outer flange of the IN BOX.



4 Install wiring device per manufacturer's instructions, Local and National Electrical Codes.



Accepts most single gang wiring devices and uses a standard indoor wall plate.



Completed installation with weatherproof-in-use cover. DBVS1C shown.

Note: Meets 2011 NEC Section 406-9; for the protection of exterior outlets which require the use of a weatherproof while-in-use cover for all outdoor 15 or 20 AMP receptacles.

Scan For Video

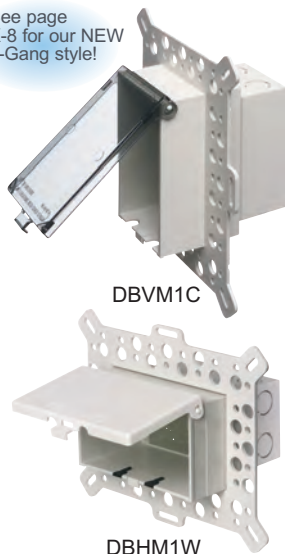




Low Profile IN BOX™ for New Construction Stucco, Textured Surfaces, and Rigid Siding

One-piece, recessed electrical box with weatherproof-in-use cover for stucco over masonry or wood construction. Also for cementitious/fiber rigid lap siding. Non-metallic cover and base. Accepts most single gang wiring devices and uses standard indoor wall plates or a GFCI cover plate. Box and white cover are textured/ paintable. UV rated plastic for long outdoor life.

See page
K-8 for our NEW
2-Gang style!



Features and Benefits

- One-piece assembly replaces the installation of an electrical box and bubble cover assembly
- Installs in the wall, so less of it shows outside
- Holes in flange allow stucco to bond firmly
- Install option: Cover is removable for easier device installation

CATALOG NUMBER	UPC/DCI/NAED MFG #018997	ORIENTATION/ COVER COLOR	UNIT PKG	STD PKG	DIM A	DIM B	DIM C	DIM D	DIM E
DBVM1C	14315	Vertical/Clear	1	4	9.058	7.012	5.160	1.805	3.222
DBVM1W	14316	Vertical/White	1	4	9.058	7.012	5.160	1.805	3.222
DBHM1C	77608	Horizontal/Clear	1	4	7.012	9.058	5.160	1.805	3.222
DBHM1W	77610	Horizontal/White	1	4	7.012	9.058	5.160	1.805	3.222

Add suffix "GC" to Catalog # when ordering in Canada, for example DBVM1CGC.

Replacement covers available on page K-17.

2-Gang style available on page K-8.

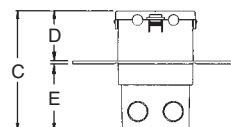
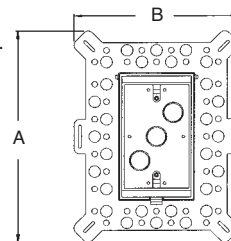


WEATHERPROOF-IN-USE



Bug Plugs ship installed in all IN BOX styles to seal unused cord hole openings.

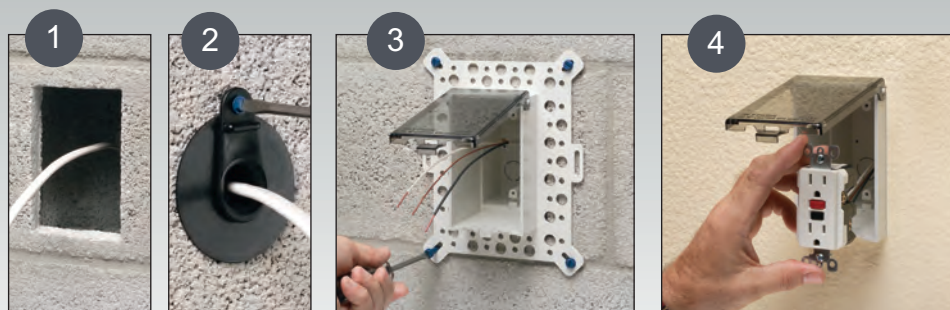
22 cu. in.



IN BOX for new stucco, textured surfaces, and rigid siding includes...Box with weatherproof-in-use cover; installed bug plugs; (1) standard duplex and (1) standard GFCI face plate; (1) NM cable connector; block bushing with washer; and an in-place, disposable mud cover.

Note: Additional Installation Methods shown on page J-13.

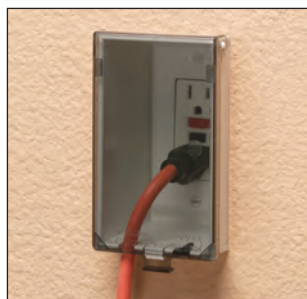
Installation Instructions for New Masonry Construction



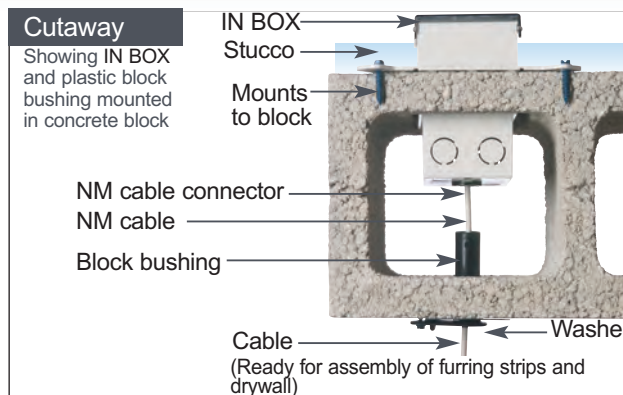
Make a 3-1/4" x 5-1/2" hole in block. Pull wiring through plastic block bushing and opening in block. Block bushing mounts to interior side of block.

Install NM cable connector and wire. Attach recessed IN BOX to block. Holes in flange allow stucco to bond firmly.

Install wiring device per manufacturer's instructions, Local, and National Electrical Codes. Accepts most devices and a standard indoor wall plate.



Completed installation with weatherproof-in-use cover. DBVM1C shown.



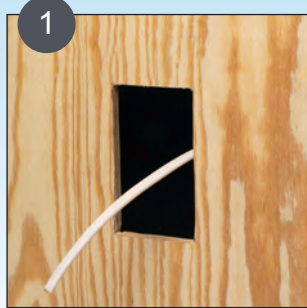
Note: Meets 2011 NEC Section 406-9; for the protection of exterior outlets which require the use of a weatherproof while-in-use cover for all outdoor 15 or 20 AMP receptacles.

Scan For Video

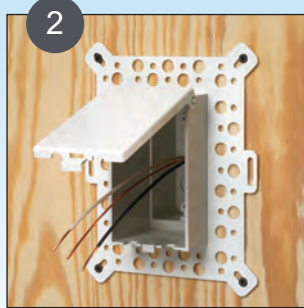


Additional **New Construction** Installation Methods for the DBVM1 & DBHM1 series.

Installation Instructions for **Wood Substrate Stucco**



Make a 3-1/4" x 5-1/2" hole in plywood. Pull wiring through opening.



Install NM cable connector and wire. Attach recessed IN BOX to plywood.

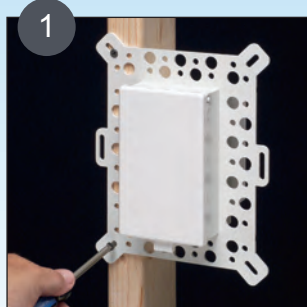


IN BOX is ready for stucco.



Install wiring device per manufacturer's instructions, Local, and National Electrical Codes. Accepts most devices and a standard indoor wall plate. DBVM1W shown.

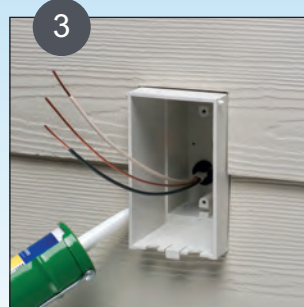
Installation Instructions for **New Rigid Siding - Method 1**



Install NM cable connector and wire. Attach IN BOX to stud.



Install moisture barrier around IN BOX per manufacturer's instructions.

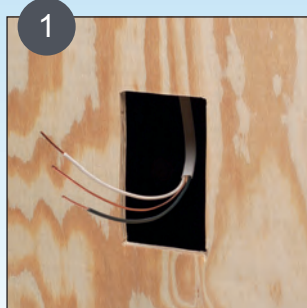


Cut rigid siding to fit around IN BOX. Caulk around box.

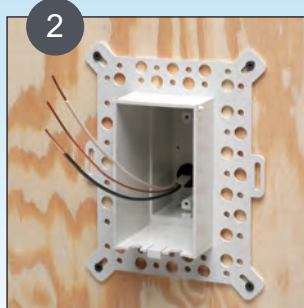


Install wiring device per manufacturer's instructions, Local, and National Electrical Codes. Accepts most devices and a standard indoor wall plate. DBVM1W shown.

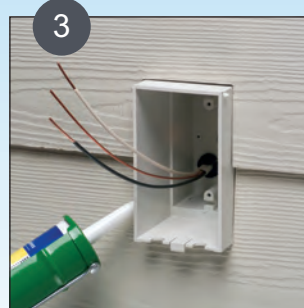
Installation Instructions for **New Rigid Siding - Method 2**



Make a 3-1/4" x 5-1/2" hole in plywood. Pull wiring through opening.



Install NM cable connector and wire. Attach recessed IN BOX to substrate, then install moisture barrier around box as shown above in Method 1.



Cut rigid siding to fit around IN BOX. Caulk around box.



Install wiring device per manufacturer's instructions, Local, and National Electrical Codes. Accepts most devices and a standard indoor wall plate. DBVM1W shown.



Low Profile IN BOX™ for Retrofit Siding Construction

Recessed electrical box with weatherproof-in-use cover for existing siding construction. Non-metallic cover and base. Accepts most single gang wiring devices and uses standard indoor wall plates or a GFCI cover plate. Box and white cover are textured/paintable. UV rated plastic for long outdoor life.

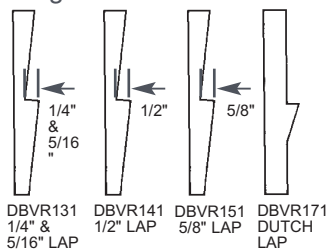


DBVR131C

Features and Benefits

- IN BOX's one-piece assembly replaces the installation of an electrical box, siding block, and bubble cover assembly
- Installs in the wall, so less of it shows outside
- Install option: Cover is removable for easier device installation
- No gaskets required

Siding Profiles



Bug Plugs ship installed in all IN BOX styles to seal unused cord hole openings.

CATALOG NUMBER	UPC/DCI/NAED MFG #018997	ORIENTATION/COVER COLOR	SIDING LAP SIZE	UNIT PKG	STD PKG	DIM A	DIM B	DIM C	DIM D	DIM E
DBVR131C	14370	Vertical/Clear	1/4" or 5/16"	1	4	7.186	4.934	5.160	1.567	3.539
DBVR131W	14375	Vertical/White	1/4" or 5/16"	1	4	7.186	4.934	5.160	1.567	3.539
DBVR141C	14371	Horizontal/Clear	1/2"	1	4	7.186	4.934	5.160	1.567	3.539
DBVR141W	14376	Horizontal/White	1/2"	1	4	7.186	4.934	5.160	1.567	3.539
DBVR151C	14372	Vertical/Clear	5/8"	1	4	7.186	4.934	5.160	1.567	3.539
DBVR151W	14377	Vertical/White	5/8"	1	4	7.186	4.934	5.160	1.567	3.539
DBVR171C	14373	Horizontal/Clear	Dutch	1	4	7.186	4.934	5.160	1.567	3.539
DBVR171W	14378	Horizontal/White	Dutch	1	4	7.186	4.934	5.160	1.567	3.539

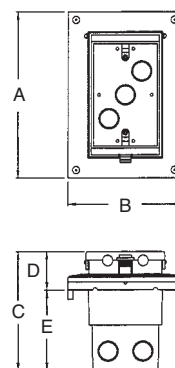
*Add suffix "GC" to Catalog # when ordering in Canada, for example DBVR131CGC. Replacement covers available on page K-17.



E170558 LR49636

WEATHERPROOF-IN-USE

22 cu. in.



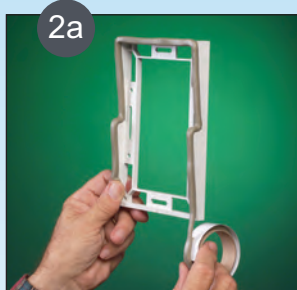
IN BOX for retrofit siding includes...

Box with weatherproof-in-use cover, installed bug plugs, siding profile adapter plate, (1) standard duplex and (1) standard GFCI face plate, (2) sets installation screws, (1) NM cable connector, and (2) rolls of caulk.

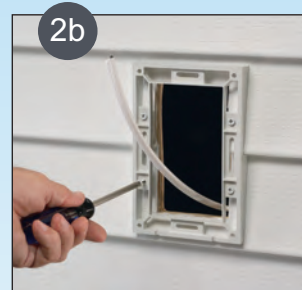
Installation Instructions for Existing Siding



Using the siding profile adapter plate as a template, cut hole in existing siding. Pull wiring.



Apply caulk around edges of back of adapter. Press onto siding.



Attach adapter to siding with provided short screws. Trim excess caulk as needed.



Apply caulk to reverse side of IN BOX flange.



Install NM cable connector and wire, then attach with provided long screws. Trim excess caulk as needed. Install wiring device per manufacturer's instructions, Local and National Electrical Codes.

Note: Meets 2011 NEC Section 406-9; for the protection of exterior outlets which require the use of a weatherproof while-in-use cover for all outdoor 15 or 20 AMP receptacles.

Low Profile IN BOX™ for Retrofit Siding Construction

Recessed electrical box with weatherproof-in-use cover for existing siding construction. Non-metallic cover and base. Accepts most single gang wiring devices and uses standard indoor wall plates or a GFCI cover plate. Box and white cover are textured/paintable. UV rated plastic for long outdoor life.



DBHR131W

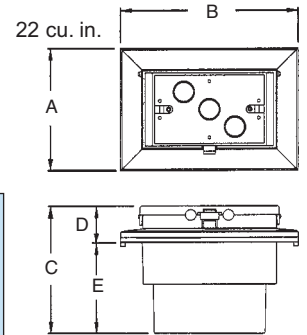
CATALOG NUMBER	UPC/DCI/NAED MFG #018997	ORIENTATION/COVER COLOR	SIDING LAP SIZE	UNIT PKG	STD PKG	DIM A	DIM B	DIM C	DIM D	DIM E
DBHR131C	77612	Vertical/Clear	1/4" or 5/16"	1	4	4.934	7.186	5.160	1.567	3.539
DBHR131W	77614	Vertical/White	1/4" or 5/16"	1	4	4.934	7.186	5.160	1.567	3.539
DBHR141C	77616	Horizontal/Clear	1/2"	1	4	4.934	7.186	5.160	1.567	3.539
DBHR141W	77618	Horizontal/White	1/2"	1	4	4.934	7.186	5.160	1.567	3.539
DBHR151C	77620	Vertical/Clear	5/8"	1	4	4.934	7.186	5.160	1.567	3.539
DBHR151W	77622	Vertical/White	5/8"	1	4	4.934	7.186	5.160	1.567	3.539
DBHR171C	77624	Horizontal/Clear	Dutch	1	4	4.934	7.186	5.160	1.567	3.539
DBHR171W	77626	Horizontal/White	Dutch	1	4	4.934	7.186	5.160	1.567	3.539

*Add suffix "GC" to Catalog # when ordering in Canada, for example DBHR131WGC. Replacement covers available on page K-17.



E170558 LR49636

WEATHERPROOF-IN-USE



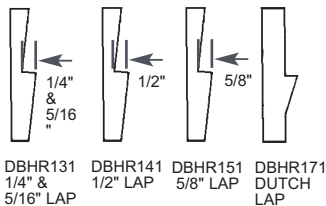
IN BOX for retrofit siding includes...

Box with weatherproof-in-use cover, installed bug plugs, siding profile adapter plate, (1) standard duplex and (1) standard GFCI face plate, (2) sets installation screws, (1) NM cable connector, and (2) rolls of caulk.

Features and Benefits

- IN BOX's one-piece assembly replaces the installation of an electrical box, siding block, and bubble cover assembly
- Installs in the wall, so less of it shows outside
- Install option: Cover is removable for easier device installation
- No gaskets required

Siding Profiles



Bug Plugs ship installed in all IN BOX styles to seal unused cord hole openings.

Installation Instructions for Existing Siding



Using the siding profile adapter plate as a template, cut hole in existing siding. Pull wiring.



Apply caulk around edges of back of adapter (see page J-14, step 2a). Press onto siding. Attach adapter to siding with provided short screws. Trim excess caulk as needed.



Apply caulk to reverse side of IN BOX flange (see page J-14, step 3a). Install NM cable connector and wire, then attach with provided long screws. Trim excess caulk as needed.



Install wiring device per manufacturer's instructions, Local and National Electrical Codes. Completed installation with weatherproof-in-use cover. DBHR131W shown.

Note: Meets 2011 NEC Section 406-9; for the protection of exterior outlets which require the use of a weatherproof while-in-use cover for all outdoor 15 or 20 AMP receptacles.



Low Profile IN BOX™ for Flat Surface Retrofit Construction

One-piece, recessed electrical box with weatherproof-in-use cover for flat surfaces in existing construction. Non-metallic cover and base. Accepts most single gang wiring devices and uses standard indoor wall plates or a GFCI cover plate. Box and white cover are textured/paintable. UV rated plastic for long outdoor life.

See page K-8 for our NEW 2-Gang style!



DBVR1C



DBHR1W

Features and Benefits

- IN BOX's one-piece assembly replaces the installation of an electrical box and bubble cover assembly
- Installs in the wall, so less of it shows outside
- Use the retrofit IN BOX on plywood, T-111, and other flat surfaces.
- Install option: Cover is removable for easier device installation
- No gaskets required

CATALOG NUMBER	UPC/DCI/NAED MFG #018997	ORIENTATION/COVER COLOR	UNIT PKG	STD PKG	DIM A	DIM B	DIM C	DIM D	DIM E
DBVR1C	14313	Vertical/Clear	1	4	7.186	4.934	5.160	1.313	3.847
DBVR1W	14314	Vertical/White	1	4	7.186	4.934	5.160	1.313	3.847
DBHR1C	77604	Horizontal/Clear	1	4	4.934	7.186	5.160	1.313	3.847
DBHR1W	77606	Horizontal/White	1	4	4.934	7.186	5.160	1.313	3.847

Add suffix "GC" to Catalog # when ordering in Canada, for example DBVR1CGC. Replacement covers and siding profiles to convert for use on existing siding available on page K-17. 2-Gang style available on page K-17.



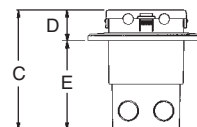
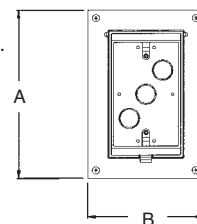
E170558 LR49636

WEATHERPROOF-IN-USE



Bug Plugs ship installed in all IN BOX styles to seal unused cord hole openings.

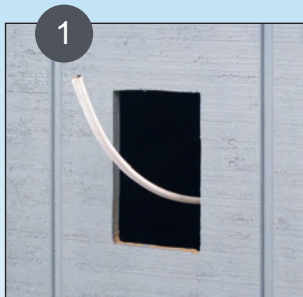
22 cu. in.



IN BOX for retrofit, flat surfaces includes...

Box with weatherproof-in-use cover; installed bug plugs; (1) standard duplex and (1) standard GFCI face plate; (1) set installation screws; (1) NM cable connector; and (1) roll of caulk.

Installation Instructions



1 Cut a 3-1/4" x 5-1/2" hole in substrate. Pull wiring.



2 Apply the supplied caulk around back edges of flange. Install NM cable connector and wire, then press onto surface.



3 Attach IN BOX with stainless steel screws (provided).



4 Install wiring device per manufacturer's instructions, Local and National Electrical Codes.



Accepts most single gang wiring devices, and uses a standard indoor wall plate. DBVR1C shown.



DBVR1W shown. IN BOX Saves Time. Looks Great!

Note: Meets 2011 NEC Section 406-9; for the protection of exterior outlets Which require the use of a weatherproof while-in-use cover for all outdoor 15 or 20 AMP receptacles.

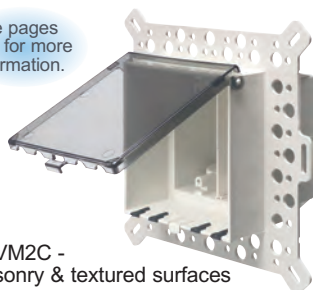
Scan For Video



Two-Gang, Low Profile IN BOX™

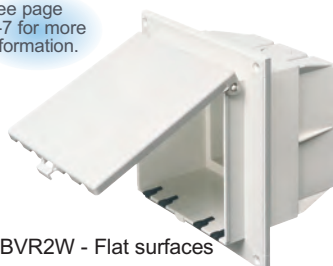
Two-gang, recessed electrical box with weatherproof-in-use cover for flat surfaces, masonry, retrofit, and siding construction (see below for product use). Non-metallic cover and base. Installs two outlets or combo devices. Box and white cover are textured/ paintable. UV rated plastic for long outdoor life.

See pages K-3 for more information.



DBVM2C -
Masonry & textured surfaces

See page K-7 for more information.



DBVR2W - Flat surfaces

See page K-2 for more information.



DBVS2C - Vinyl siding



Bug Plugs ship installed in all IN BOX styles to seal unused cord hole openings.

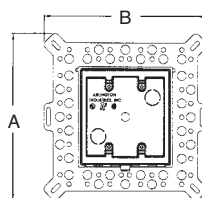
CATALOG NUMBER	UPC/DCI/NAED MFG #018997	DESCRIPTION/ COVER COLOR	UNIT	STD PKG	DIM A	DIM B	DIM C	DIM D	DIM E
DBVM2C	03962	2-Gang, Vertical/Clear	1	4	9.0588	8.9925	1.142	1.805	3.222
DBVM2W	03963	2-Gang, Vertical/White	1	4	9.0588	8.9925	1.142	1.805	3.222
DBVR2C	03964	2-Gang, Vertical/Clear	1	4	7.1596	8.8885	1.142	1.295	3.847
DBVR2W	03965	2-Gang, Vertical/White	1	4	7.1596	8.8885	1.142	1.295	3.847
DBVS2C	03960	2-Gang, Vertical/Clear	1	4	9.0588	8.9925	1.142	1.313	2.879
DBVS2W	03961	2-Gang, Vertical/White	1	4	9.0588	8.9925	1.142	1.313	2.879

Add suffix "GC" to Catalog # when ordering in Canada, for example DBVM2CGC.

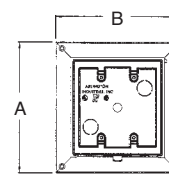
2-Gang, replacement covers available on page K-17.



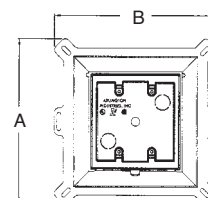
E170558 LR49636



DBVM2
34.0 cu. in.



DBVR2
34.0 cu. in.



DBVS2
34.0 cu. in.

WEATHERPROOF-IN-USE

Two-Gang IN BOX includes...

Box with weatherproof-in-use cover; installed bug plugs; (1) decorator wall plate; and (2) NM cable connectors. DBVM2 also includes a block bushing with washer; and an in-place, disposable mud cover. DBVR2 also includes (1) set installation screws; and (1) roll of caulk. DBVS2 also includes (1) set installation screws.



Completed installation,
DBVS2C shown.

Features and Benefits

- IN BOX's one-piece assembly replaces the installation of an electrical box and bubble cover assembly
- Installs in the wall, so less of it shows outside
- No gaskets required
- For flat surfaces, vinyl siding, stucco over masonry or wood (with or without lath), and retrofit
- Install an outlet and a switch, or two switches in one location
- Includes 1/2" and 3/4" NM cable connectors and a two-gang rectangular device plate

Note: Meets 2011 NEC Section 406-9; for the protection of exterior outlets which require the use of a weatherproof while-in-use cover for all outdoor 15 or 20 AMP receptacles.

Scan For Video

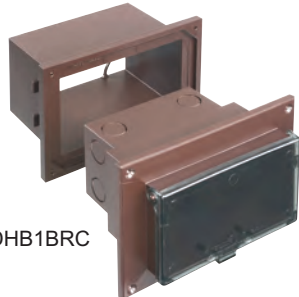


IN BOX



Low Profile IN BOX™ with Adapter Sleeve or New Brick Construction

Recessed electrical box with weatherproof-in-use cover for new brick construction. Includes a protective adapter sleeve that keeps mortar out. Non-metallic cover and base. Accepts most single gang wiring devices and uses standard indoor wall plates or a GFCI cover plate. White box and cover are textured/ paintable. UV rated plastic for long outdoor life.



DHB1BRC

Features and Benefits

- IN BOX's one-piece assembly replaces the installation of an electrical box and bubble cover assembly
- Adapter sleeve, with loops in back for tying off cable, keeps mortar out of the box while brick mason works
- The clean IN BOX slips into the sleeve for easy installation!
- Built-in anchor tabs seat IN BOX sleeve into mortar for a super secure installation
- Installs in the wall, so less of it shows outside
- Install option: Cover is removable for easier device installation
- No gaskets required



Bug Plugs ship installed in all IN BOX styles to seal unused cord hole openings.

CATALOG NUMBER	UPC/DCI/NAED MFG #018997	DESCRIPTION/COVER COLOR	UNIT	STD	DIM A	DIM B	DIM C	DIM D	DIM E
DHB1C	54880	Horiz./Clear Cover/White Box	1	4	4.934	7.186	5.283	1.658	3.625
DHB1W	54882	Horiz./White Cover/White Box	1	4	4.934	7.186	5.283	1.658	3.625
DHB1BRC	54881	Horiz./Clear Cover/Brown Box	1	4	4.934	7.186	5.283	1.658	3.625
DHB1BR	54875	Horiz./Brown Cover/Brown Box	1	4	4.934	7.186	5.283	1.658	3.625
DVB1C	43609	Vertical/Clear Cover/White Box	1	4	7.186	4.934	5.283	1.658	3.625
DVB1W	43620	Vertical/White Cover/White Box	1	4	7.186	4.934	5.283	1.658	3.625
DVB1BRC	43608	Vertical/Clear Cover/Brown Box	1	4	7.186	4.934	5.283	1.658	3.625
DVB1BR	43595	Vertical/Brown Cover/Brown Box	1	4	7.186	4.934	5.283	1.658	3.625

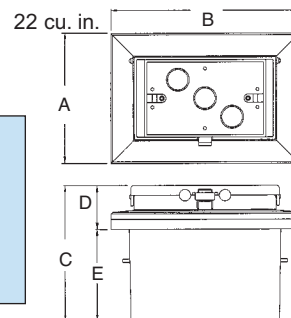
Add suffix "GC" to Catalog # when ordering in Canada, for example DHB1CGC.
Replacement covers available on page K-17.



WEATHERPROOF-IN-USE

IN BOX for new brick includes...

Box with weatherproof-in-use cover, adapter sleeve, installed bug plugs, (1) standard duplex and (1) standard GFCI face plate, installation screws, (1) NM cable connector, and (1) roll of caulk, disposable mud cover.



Installation Instructions



Mortar in adapter sleeve. Pull wire and tie off to loop in adapter sleeve.



When ready to complete... apply supplied caulk as shown and press around edges of adapter sleeve.



Install the supplied NM cable connector and wire. Insert the clean IN BOX into the sleeve.



Attach IN BOX with screws provided. Install wiring device per manufacturer's instructions, Local and National Electrical Codes.



Accepts most single gang wiring devices, and uses a standard indoor wall plate. DHB1C shown.



Weatherproof-in-use. DHB1BRC shown.
IN BOX Saves Time. Looks Great!

Note: Meets 2011 NEC Section 406-9; for the protection of exterior outlets which require the use of a weatherproof while-in-use cover for all outdoor 15 or 20 AMP receptacles.

Low Profile IN BOX™ with Metal Box for Flat Surface Retrofit Construction

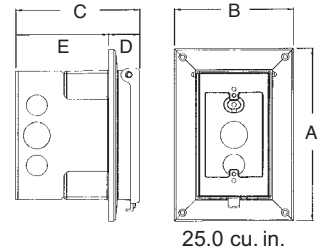
Recessed, metallic electrical box with non-metallic, weatherproof-in-use cover for flat surfaces in existing construction. Accepts most single gang wiring devices and uses standard indoor wall plates or a GFCI cover plate. Non-metallic portion and covers are UV rated plastic for long outdoor life.

CATALOG NUMBER	UPC/DCI/NAED MFG #018997	ORIENTATION/ COVER COLOR	UNIT	STD PKG	DIM A	DIM B	DIM C	DIM D	DIM E
DSBVR1C	09654	Vertical/Clear	1	4	7.196	4.937	5.129	1.283	3.846
DSBVR1W	09655	Vertical/White	1	4	7.196	4.937	5.129	1.283	3.846
DSBHR1C	09656	Horizontal/Clear	1	4	4.937	7.196	5.129	1.283	3.846
DSBHR1W	09657	Horizontal/white	1	4	4.937	7.196	5.129	1.283	3.846

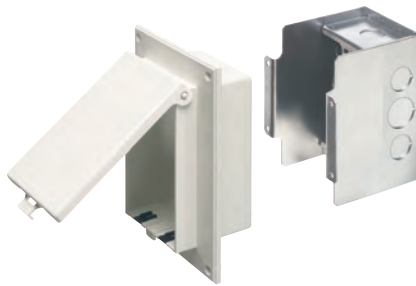
Replacement covers and siding profiles to convert for use on existing siding available on page K-17.



WEATHERPROOF-IN-USE



Note: Meets 2011 NEC Section 406-9; for the protection of exterior outlets which require the use of a weatherproof while-in-use cover for all outdoor 15 or 20 AMP receptacles.



IN BOX for retrofit, flat surfaces includes...

Metallic box with non-metallic, weatherproof-in-use cover; installed bug plugs; (1) standard duplex and (1) standard GFCI face plate; (1) set installation screws; and (1) roll of caulk.

Features and Benefits

- IN BOX replaces the installation of an electrical box and bubble cover assembly
- Installs in the wall, so less of it shows outside
- No gaskets required
- Use the retrofit IN BOX on plywood, T-111, and other flat surfaces
- Install option: Cover is removable for easier device installation
- White, non-metallic portion and white cover are textured/paintable
- Grounding wire provided
- For use with metal raceway systems



Bug Plugs ship installed in all IN BOX styles to seal unused cord hole openings.



Low Profile IN BOX™ with Metal Box for New Vinyl Siding Construction

Recessed, metallic electrical box with non-metallic, weatherproof-in-use cover for new siding applications. Accepts most single gang wiring devices and uses standard indoor wall plates or a GFCI cover plate. Non-metallic portion and covers are UV rated plastic for long outdoor life.

CATALOG NUMBER	UPC/DCI/NAED MFG #018997	ORIENTATION/COVER COLOR	SIDING TYPE	UNIT PKG	STD PKG	DIM A	DIM B	DIM C	DIM D	DIM E
DSBVS1C	09650	Vertical/Clear	All Types	1	4	9.058	7.012	5.129	1.775	3.221
DSBVS1W	09651	Vertical/White	All Types	1	4	9.058	7.012	5.129	1.775	3.221
DSBHS1C	09652	Horizontal/Clear	All Types	1	4	7.012	9.058	5.129	1.775	3.221
DSBHS1W	09653	Horizontal/white	All Types	1	4	7.012	9.058	5.129	1.775	3.221

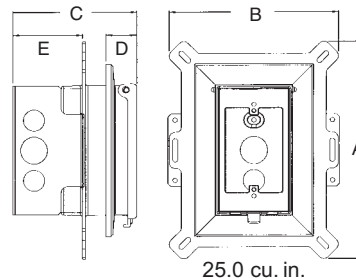
Replacement covers available on page K-17.



E48106 LR49636

WEATHERPROOF-IN-USE

Note: Meets 2011 NEC Section 406-9; for the protection of exterior outlets which require the use of a weatherproof while-in-use cover for all outdoor 15 or 20 AMP receptacles.



DSBHS1C

IN BOX for new siding includes...

Metallic box with non-metallic, weatherproof-in-use cover; installed bug plugs; (1) standard duplex and (1) standard GFCI face plate; and (1) set installation screws.

Features and Benefits

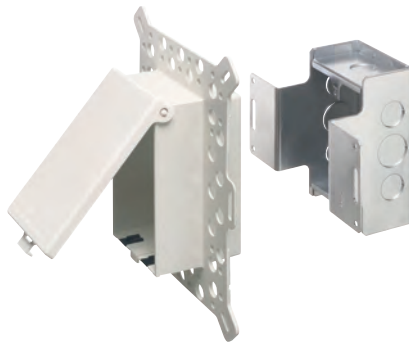
- IN BOX replaces the installation of an electrical box, siding block, and bubble cover assembly
- Installs in the wall, so less of it shows outside
- Outer flange covers cut ends of siding
- Install option: Cover is removable for easier device installation
- White, non-metallic portion and white cover are textured/paintable
- Grounding wire provided
- For use with metal raceway systems



Bug Plugs ship installed in all IN BOX styles to seal unused cord hole openings.

Low Profile IN BOX™ with Metal Box for New Construction Stucco, Textured Surfaces, and Rigid Siding

Recessed, metallic electrical box with non-metallic, weatherproof-in-use cover for stucco over masonry or wood construction. Also for cementitious/fiber rigid lap siding. Accepts most single gang wiring devices and uses standard indoor wall plates or a GFCI cover plate. Non-metallic portion and covers are UV rated plastic for long outdoor life.



DSBVM1W



Bug Plugs ship installed in all IN BOX styles to seal unused cord hole openings.

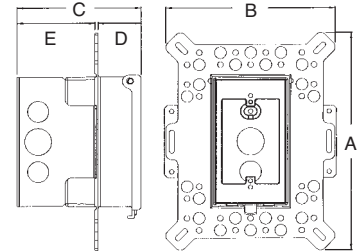
CATALOG NUMBER	UPC/DCI/NAED MFG #018997	ORIENTATION/ COVER COLOR	UNIT	STD PKG	DIM A	DIM B	DIM C	DIM D	DIM E
DSBVM1C	09642	Vertical/Clear	1	4	9.058	7.012	5.129	1.775	3.221
DSBVM1W	09646	Vertical/White	1	4	9.058	7.012	5.129	1.775	3.221
DSBHM1C	09643	Horizontal/Clear	1	4	7.012	9.058	5.129	1.775	3.221
DSBHM1W	09648	Horizontal/white	1	4	7.012	9.058	5.129	1.775	3.221

Replacement covers available on page K-17.



WEATHERPROOF-IN-USE

Note: Meets 2011 NEC Section 406-9; for the protection of exterior outlets which require the use of a weatherproof while-in-use cover for all outdoor 15 or 20 AMP receptacles.



25.0 cu. in.

IN BOX for new stucco, textured surfaces, and rigid siding includes...Metallic box with non-metallic, weatherproof-in-use cover; installed bug plugs; (1) standard duplex and (1) standard GFCI face plate; block bushing with washer; and an in-place, disposable mud cover.

Features and Benefits

- IN BOX replaces the installation of an electrical box and bubble cover assembly
- Installs in the wall, so less of it shows outside
- No gaskets required
- Holes in flange allow stucco to bond firmly
- Install option: Cover is removable for easier device installation
- White, non-metallic portion and white cover are textured/paintable
- Grounding wire provided
- For use with metal raceway systems



Low Profile IN BOX™ with Metal Box and Adapter Sleeve for New Brick Construction

Recessed, metallic electrical box with non-metallic, weatherproof-in-use cover for new brick. Includes a protective adapter sleeve that keeps mortar out. Accepts most single gang wiring devices and uses standard indoor wall plates or a GFCI cover plate. Non-metallic portion and covers are UV rated plastic for long outdoor life.

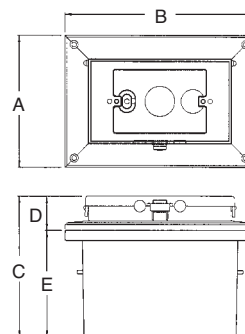
CATALOG NUMBER	UPC/DCI/NAED MFG #018997	ORIENTATION/ COVER COLOR	UNIT	STD PKG	DIM A	DIM B	DIM C	DIM D	DIM E
DSHB1C	43610	Horiz./Clear Cover/White Box	1	4	4.937	7.196	5.283	1.283	4.000
DSHB1W	43611	Horiz./Clear Cover/White Box	1	4	4.937	7.196	5.283	1.283	4.000
DSHB1BRC	43612	Horiz./Clear Cover/Brown Box	1	4	4.937	7.196	5.283	1.283	4.000
DSHB1BR	43613	Horiz./Brown Cover/Brown Box	1	4	4.937	7.196	5.283	1.283	4.000

Replacement covers available on page K-17.



WEATHERPROOF-IN-USE

Note: Meets 2011 NEC Section 406-9; for the protection of exterior outlets which require the use of a weatherproof while-in-use cover for all outdoor 15 or 20 AMP receptacles.



25.0 cu. in.



DSHB1C

Features and Benefits

- IN BOX replaces the installation of an electrical box and bubble cover assembly
- Installs in the wall, so less of it shows outside
- No gaskets required
- Install option: Cover is removable for easier device installation
- White, non-metallic portion and white cover are textured/paintable
- Grounding wire provided
- For use with metal raceway systems



Bug Plugs ship installed in all IN BOX styles to seal unused cord hole openings.



Weatherproof-in-use.
DSHB1BRC shown.

IN BOX Saves Time. Looks Great!

IN BOX for new brick includes...

Metallic box with non-metallic, weatherproof-in-use cover; installed bug plugs; adapter sleeve; (1) standard duplex and (1) standard GFCI face plate; (1) set installation screws; (1) NM cable connector; an in-place, disposable mud cover; and (1) roll of caulk.

Low Profile IN BOX™ for 1-1/2" Wall Systems

Recessed electrical box with weatherproof-in-use cover for 1-1/2" wall systems, including foam. Non-metallic cover and base. Accepts most single gang wiring devices and uses standard indoor wall plates or a GFCI cover plate. Box and white cover are textured/ paintable. UV rated plastic for long outdoor life.



DBVME1W

Features and Benefits

- IN BOX's one-piece assembly replaces the installation of an electrical box and bubble cover assembly
- Fewer parts to handle – save on materials and labor.
- Installs in the wall, so less of it shows outside
- Features a fixed, built-in flange, large enough to eliminate the need for a separate flashing.
- Install option: Cover is removable for easier device installation
- No gaskets required



Bug Plugs ship installed in all IN BOX styles to seal unused cord hole openings.

CATALOG NUMBER	UPC/DCI/NAED MFG #018997	ORIENTATION/ COVER COLOR	UNIT	STD	DIM A	DIM B	DIM C	DIM D	DIM E
DBVME1C	77645	Vertical/Clear	1	4	8.000	5.750	4.950	2.461	2.567
DBVME1W	77646	Vertical/White	1	4	8.000	5.750	4.950	2.461	2.567

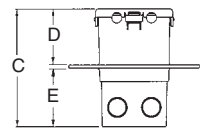
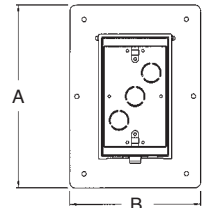
Add suffix "GC" to Catalog # when ordering in Canada, for example DVBME1CGC.
Replacement covers available on page K-17.



E170558 LR49636

WEATHERPROOF-IN-USE

22 cu. in.



IN BOX for 1-1/2" wall systems includes...

Box with weatherproof-in-use cover, installed bug plugs, (1) standard duplex and (1) standard GFCI face plate, (1) NM cable connector, and disposable mud cover.

Saves Time – Looks Great!

Cover ships with disposable mud cover



Low profile IN BOX for a neat, clean look



Note: Meets 2011 NEC Section 406-9; for the protection of exterior outlets which require the use of a weatherproof while-in-use cover for all outdoor 15 or 20 AMP receptacles.

IN BOX



Low Profile IN BOX™ for Foam Wall Systems

Recessed electrical box with weatherproof-in-use cover. Adjustable to fit any foam board thickness. Non-metallic cover and base. Accepts most single gang wiring devices and uses standard indoor wall plates or a GFCI cover plate. Box and white cover are textured/ paintable. UV rated plastic for long outdoor life.



DBVMA1W

Features and Benefits

- IN BOX's one-piece assembly replaces the installation of an electrical box and bubble cover assembly
- Adjustable flange depth fits any foam board thickness or custom finish in concrete block and stucco applications
- Installs in the wall, so less of it shows outside
- Adjusts for finishes from 1/4" to 2-1/2" thick – in walls, from 2-3/4" to 5" deep
- Install option: Cover is removable for easier device installation
- No gaskets required



Bug Plugs ship installed in all IN BOX styles to seal unused cord hole openings.

CATALOG NUMBER	UPC/DCI/NAED MFG #018997	ORIENTATION/ COVER COLOR	UNIT	STD PKG	DIM A	DIM B	DIM C	DIM D MIN / MAX
DBVMA1C	77632	Vertical/Clear	1	4	9.058	7.012	5.160	.250-5.000
DBVMA1W	77634	Vertical/White	1	4	9.058	7.012	5.160	.250-5.000

Add suffix "GC" to Catalog # when ordering in Canada, for example DBVMA1CGC.

Replacement covers available on page K-17.

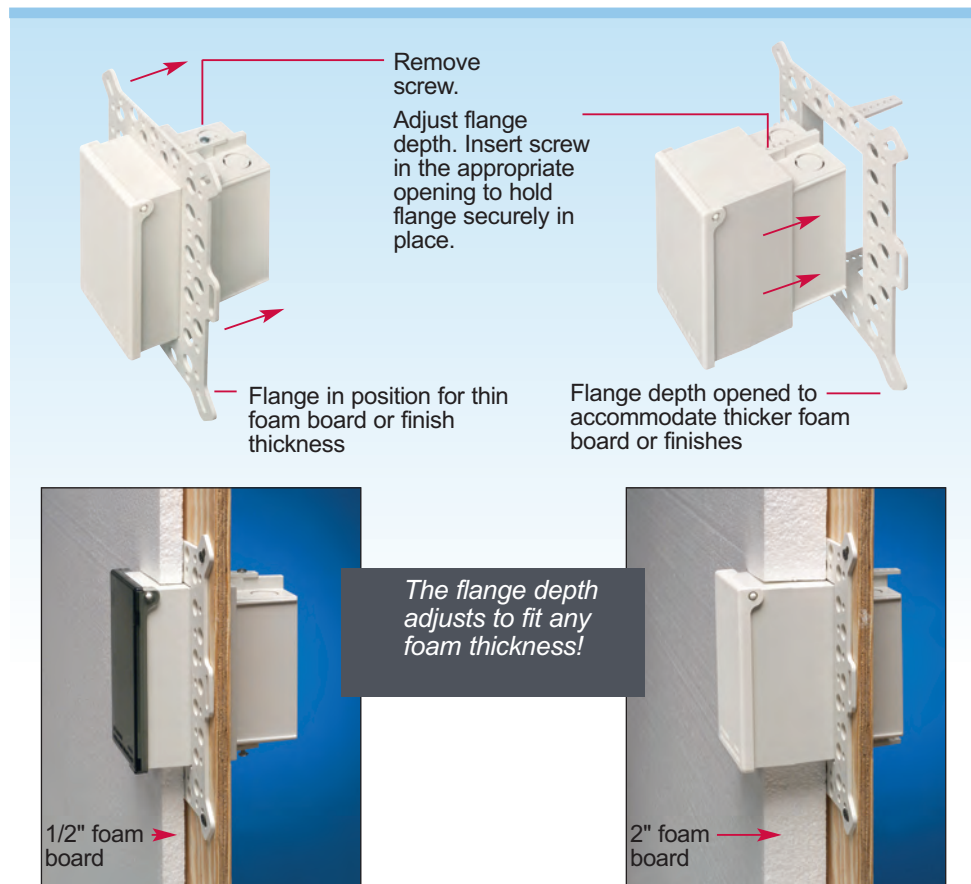
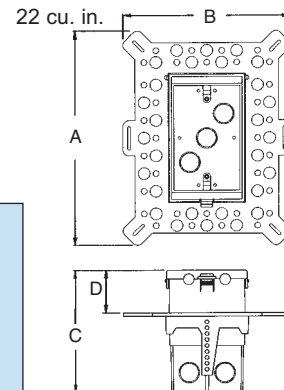


E170558 LR49636

WEATHERPROOF-IN-USE

IN BOX for foam wall systems includes...

Box with weatherproof-in-use cover, installed bug plugs, (1) standard duplex and (1) standard GFCI face plate, (4) installation screws, (1) NM cable connector, and an in-place, disposable mud cover.



Note: Meets 2011 NEC Section 406-9; for the protection of exterior outlets which require the use of a weatherproof while-in-use cover for all outdoor 15 or 20 AMP receptacles.

Low Profile IN-AND-OUT™ COVERS for New or Existing Construction

Low profile when not in use and a deeper, weatherproof-in-use cover when cord is plugged in. Non-metallic cover and base. Comes in clear or textured/paintable white. UV rated plastic for long outdoor life.



60VC

Features and Benefits

- Low profile when not in use – weatherproof-while-in-use
- IN position provides a sealed box to keep bugs out
- Extends quickly and easily into the OUT position to accommodate a plug
- Fits over all boxes or openings in new or existing projects
- The 61 Series has an installed, oversized base for large openings or a 3.5" round outlet box
- Installed gaskets
- Install option: Cover is removable for easier device installation
- Vertical and horizontal styles

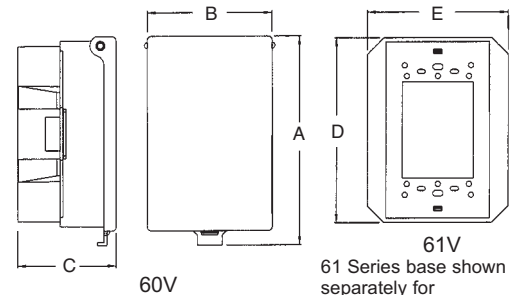
Note: Meets 2011 NEC Section 406-9; for the protection of exterior outlets which require the use of a weatherproof while-in-use cover for all outdoor 15 or 20 AMP receptacles.

CATALOG NUMBER	UPC/DCI/NAE MFG #018997	ORIENTATION/ COVER COLOR	UNIT PKG	STD PKG	DIM A	DIM B	DIM C	DIM D	DIM E
60VC	00682	Vertical/Clear	1	4	6.2743	7.521	1.6703	0.005	-
60VW	00680	Vertical/White	1	4	6.2743	7.521	1.6703	0.005	-
61VC	00683	Vertical/Clear	1	4	6.2743	7.521	1.6703	0.005	5.561
61VW	00681	Vertical/White	1	4	6.2743	7.521	1.6703	0.005	5.561
60HC	00686	Horizontal/Clear	1	4	4.1925	8.361	1.6703	0.005	-
60HW	00684	Horizontal/white	1	4	4.1925	8.361	1.6703	0.005	-
61HC	00687	Horizontal/Clear	1	4	4.1925	8.361	1.6703	0.005	4.250
61HW	00685	Horizontal/white	1	4	4.1925	8.361	1.6703	0.005	4.250



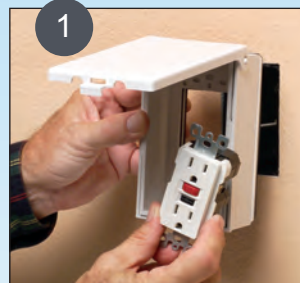
WEATHERPROOF-IN-USE

IN AND OUT COVER includes...
Low profile cover, (1) standard duplex and (1) standard GFCI face plate, installation screws, and installed gaskets.



61V
61 Series base shown separately for dimensional purposes only.

Installation Instructions



1
Feed device through opening (cover is removable for easier access).



2
Install wiring device per manufacturer's instructions, Local and National Electrical Codes using the pre-drilled holes in base.



3
Install plate and the installation is done!



IN for **GOOD LOOKS** and to stay bug free... (60VW shown)



OUT to **PLUG IN** for weatherproof-in-use! (61HW shown)



To close: Bow out sides of extended cover and push in.



IN BOX™

Replacement Covers

Replacement covers sold separately. Clear is not paintable and white is textured, paintable. UV rated plastic for long outdoor life.

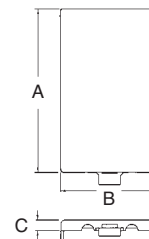


DBVC



DBV2W

CATALOG NUMBER	UPC/DCI/NAED MFG #018997	ORIENTATION/ COVER COLOR	UNIT PKG	STD PKG	DIM A	DIM B	DIM C
DBVC	77640	2-Gang, Vert. / Clear	10	10	5.650	3.420	.370
DBVW	77642	2-Gang, Vert. / White	10	10	5.650	3.420	.370
DBHC	77650	Single-Gang, Horiz. / Clear	10	10	3.420	5.650	.370
DBHW	77562	Single-Gang, Horiz. / White	10	10	3.420	5.650	.370
DBV2C	13009	2-Gang, Vert. / Clear	10	10	5.650	5.410	.370
DBV2W	13010	2-Gang, Vert. / White	10	10	5.650	5.410	.370



Weatherproof Box Holder

Zinc die-cast and non-metallic.



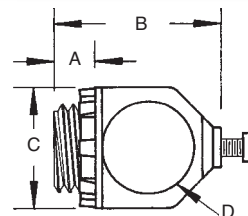
CATALOG NUMBER	UPC/DCI/NAED MFG #018997	TRADE SIZE	UNIT PKG	STD PKG	DIM A	DIM B	DIM C	DIM D
FS50	61050	1/2	25	25	.380	1.550	1.125	.860
FS75	61075	3/4	25	25	.380	1.550	1.125	.860
NMFS50*	54050	1/2	25	25	.380	1.550	1.125	.860
NMFS75	54075	3/4	25	25	.380	1.550	1.125	.860

*UV rated non-metallic body.

Note: Can be used as an external means of support to meet the requirements of 2011 NEC Section 314-23.



E161207 LR49636

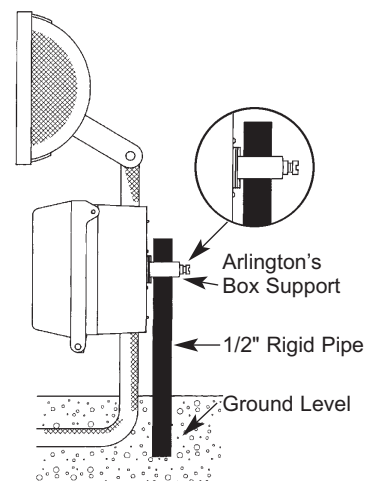


Assembly Instructions

Just screw the box support into the electrical box; the entire assembly is held secure with a 1/2" rigid steel conduit or water pipe.

Other Uses

- Stubbing up electrical enclosures above concrete slabs with rigid pipe.
- Suspending electrical boxes with rigid pipe between bar joists.
- Suspending fire alarms (smoke detectors) with rigid pipe between bar joists.
- Can be used for installation of equipment where a rigid pipe can be used for a holding means and a 1/2" knockout is present for attachment.



DRI-BOX® Adapters with Non-Metallic Cover and Base

This adapter will accept any wiring device and standard size wall plate. Colors: clear and textured/paintable white. UV rated plastic for long outdoor life.



DBPV1C

DBPV1/DBPV1C:
VERTICAL MOUNT, SINGLE GANG

DBPH1/DBPH1C:
HORIZONTAL MOUNT, SINGLE GANG

DBP2/DBP2C/DBP21D/DBP21DC:
VERTICAL MOUNT, TWO GANG

Meets 2011 NEC code requirements for 406.9 (B) (1) When "extra-duty" is required.

CATALOG NUMBER	UPC/DCI/NAED MFG #018997	ORIENTATION/COVER COLOR	UNIT PKG	STD PKG	DIM A	DIM B	DIM C
DBPV1*	17852	White	1	4	6.313	3.375	2.940
DBPV1C*	17840	Clear	1	4	6.313	3.375	2.940
DBPH1*	17853	White	1	4	4.000	5.685	2.940
DBPH1C*	17845	Clear	1	4	4.000	5.685	2.940
DBP2	17855	White	1	4	6.313	5.250	2.940
DBP2C	17857	Clear	1	4	6.313	5.250	2.940
DBP21D	17849	White	1	4	6.313	5.250	4.175
DBP21DC	17848	Clear	1	4	6.313	5.250	4.175

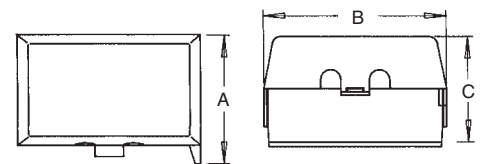
*Includes (1) standard duplex and (1) GFCI face plate.



E170558 LR49636

WEATHERPROOF-IN-USE

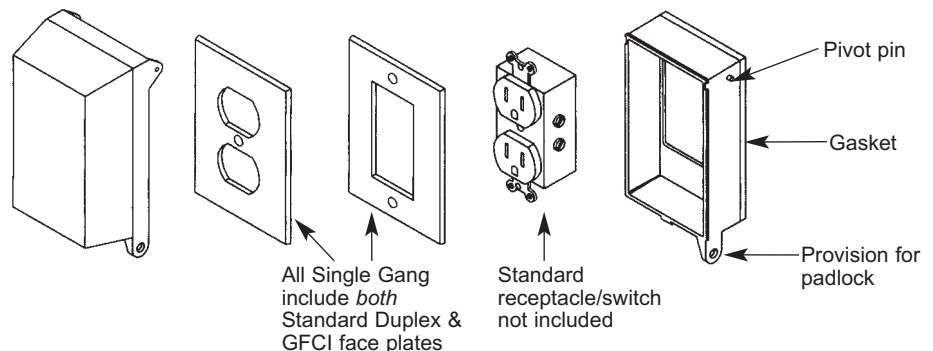
extra-duty



Installation Instructions

Remove the cover by expanding ear tabs over the pivot pins. To replace the cover, simply snap over the pivot pins.

NOTE: It is not required to remove the cover for installation.



Arlington's DRI-BOX® Adapter comes with both standard duplex and GFCI plates for added convenience, but works with any standard plastic or metal wall plate. Our DRI-BOX® meets OSHA lockout/tagout requirements using a standard padlock.

Note: Meets 2011 NEC Section 406-8; for the protection of exterior outlets which require the use of a weatherproof while-in-use cover for all outdoor 15 or 20 AMP receptacles.



Siding Box Kits

For smooth vertical mounting of fixtures and receptacles on sided structures. Paintable. UV rated plastic for long outdoor life.



8081



8081F



8082F (for 1/2" or less)



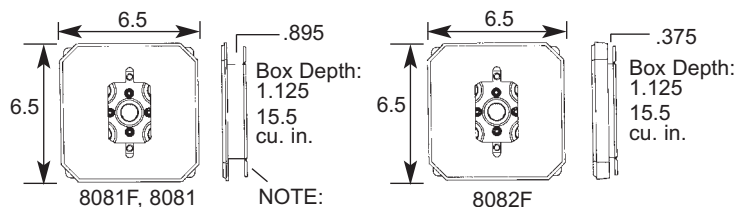
8081FC



8081FB

CATALOG NUMBER	UPC/DCI/NAED MFG #018997	SIDING TYPE	USES	UNIT STD PKG PKG		STYLE
8081*	80812	All Types	Fixtures Devices	25	25	w/o Flange
8081F*	80814	All Types	Fixtures Devices	25	25	w/ Flange
8082F*	32240	1/2" or Less	Fixtures Devices	25	25	w/ Flange
8081FC*	10939	All Types	Fixtures Devices	25	25	Cover Only
8081FB*	10941	All Types	Fixtures Devices	25	25	Box Only

*Add suffix "GC" to Catalog # when ordering in Canada, for example 8081FGC.



Features and Benefits

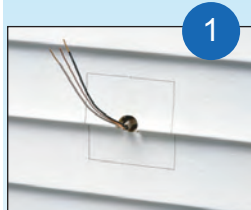
- UL Listed electrical box
- Works on all siding types – Before or After the siding is up!
- Flanges may be removed for retrofit work
- Textured, paintable surface
- NM cable connector included

For Installation Instructions 'AFTER Siding is Up' see Below. For Installation Instructions 'BEFORE Siding is Up' see Page L-2.

Installation Instructions

AFTER Siding is Up... Without Flange (8081 & 8081DBL)

NOTE: 8081F, 8081FDBL, 8082F, 8091F, and 8091FDBL may also be installed when siding is already up – Score and break off flanges before step one (below).



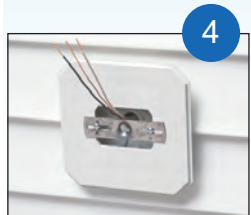
Disconnect electrical power. Place box section in desired location and pencil outline onto siding.



Cut along pencil line with razor knife and remove vinyl siding.



Mount box section to substrate. Caulk as required.



Place siding block over box section (8081 shown).



Connect wires and install fixture per manufacturer's instructions.

Siding Box Kits

For smooth vertical mounting of fixtures and GFCIs on sided structures. Paintable. UV rated plastic for long outdoor life.



CATALOG NUMBER	UPC/DCI/NAED MFG #018997	SIDING TYPE	USES	UNIT	STD	PKG	STYLE
8091*	17856	All Types	GFCIs, Fixtures	25	25		w/ Flange
8091FC	10946	All Types	GFCIs, Fixtures	10	10		Cover Only
8091FB*	10945	All Types	GFCIs, Fixtures	10	10		Box Only

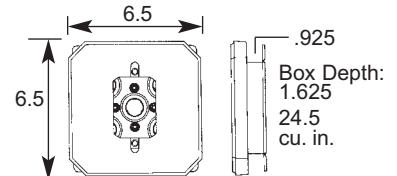
*Add suffix "GC" to Catalog # when ordering in Canada, for example 8091FGC.

PATENTED. ADDITIONAL PATENTS PENDING.



Features and Benefits

- UL Listed electrical box
- Works on all siding types – Before or After the siding is up!
- Flanges may be removed for retrofit work
- Textured, paintable surface
- NM cable connector included
- Works with fixtures and receptacles, but is deeper for use with GFCIs

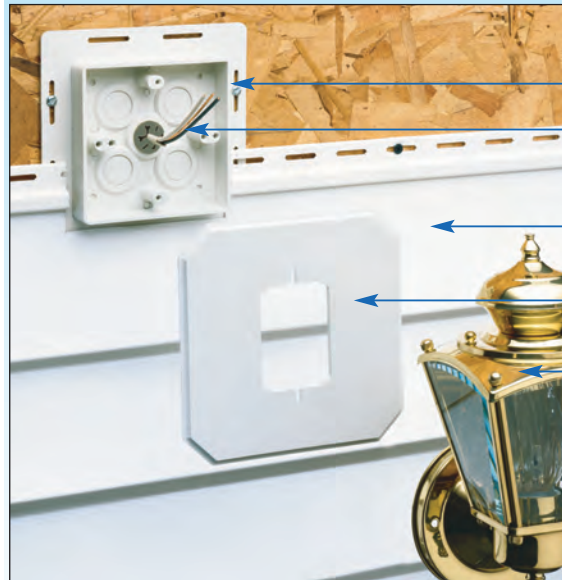


For Installation Instructions 'BEFORE Siding is Up' see Below. For Installation Instructions 'AFTER Siding is Up' see Page L-1.

Installation Instructions

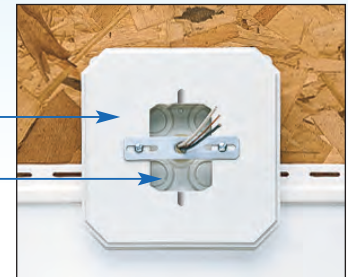
BEFORE Siding is Up...

With Flange (8081F, 8081FDBL, 8082F, 8091F, & 8091FDBL)



1. Before siding is installed, using the flanged style, screw the box to the wall using the holes provided in the flange.
2. Disconnect electrical power. Pull the wire through the knockout of your choice.
3. Install siding around box section and caulk as required.
4. Attach cover.
5. Connect the wires and install the fixture per manufacturer's instructions.

The All-in-One Electrical Box and Cover



Siding block cover is placed over the electrical box.

The rectangular hole provides access to the wire connections.



Siding Box Kits

For smooth vertical mounting of large fixtures on sided structures. Paintable, UV rated plastic for long outdoor life.



CATALOG NUMBER	UPC/DCI/NAED MFG #018997	SIDING TYPE	USES	UNIT STD PKG PKG		STYLE
8081DBL	80813	All Types	Large Fixtures	25	25	w/o Flange
8081FDBL	80815	All Types	Large Fixtures	25	25	w/ Flange
8081FDBLC	10943	All Types	Large Fixtures	10	10	Cover Only

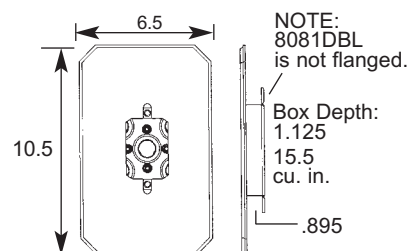
Add suffix "GC" to Catalog # when ordering in Canada, for example 8081DBLGC



E170558 LR49636

Features and Benefits

- UL Listed electrical box
- Works on all siding types — Before or After the siding is up!
- Flanges may be removed for retrofit work
- Textured, paintable surface
- NM cable connector included
- Perfect for installation of large fixtures



For Installation Instructions 'AFTER Siding is Up' see Page L-1. For Installation Instructions 'BEFORE Siding is Up' see Page L-2.

Siding Box Kit with MEGA Mounting Plate

Mount the largest coach lamps on all siding types with the sturdy MEGA Mounting Plate! It's an electrical box and cover all-in-one! Paintable. UV rated plastic for long outdoor life.



CATALOG NUMBER	UPC/DCI/NAED MFG #018997	SIDING TYPE	USES	UNIT STD PKG PKG		STYLE
8091FDBL	24168	All Types	GFCIs, Extra Large Fixtures	10	10	w/ Flange
8091FDBLC	10947	All Types	GFCIs, Extra Large Fixtures	10	10	Cover Only

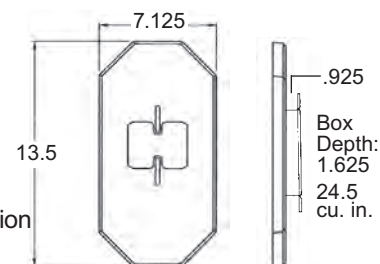
Add suffix "GC" to Catalog # when ordering in Canada, for example 8091FDBLGC
PATENTED. ADDITIONAL PATENTS PENDING.



E170558 LR49636

Features and Benefits

- Provides a solid mount for extra large fixtures
- UL Listed electrical box
- Use up or down to fit any mounting hole configuration
- Flanges may be removed for retrofit work
- Deep design to accommodate GFCIs



Installation Instructions

1. Disconnect electrical power. Insert provided NM cable connector through the KO of your choice and pull wires through.
2. Box section mounts to substrate. Caulk as required.
3. Place MEGA Plate over box section and install large fixture per manufacturer's instructions.



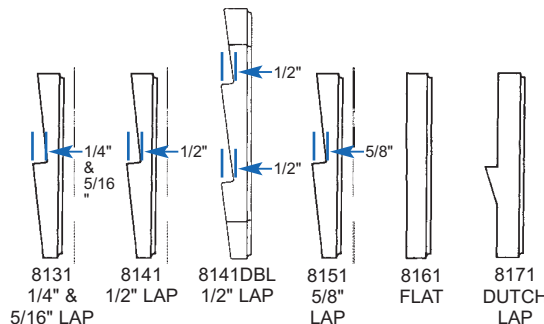
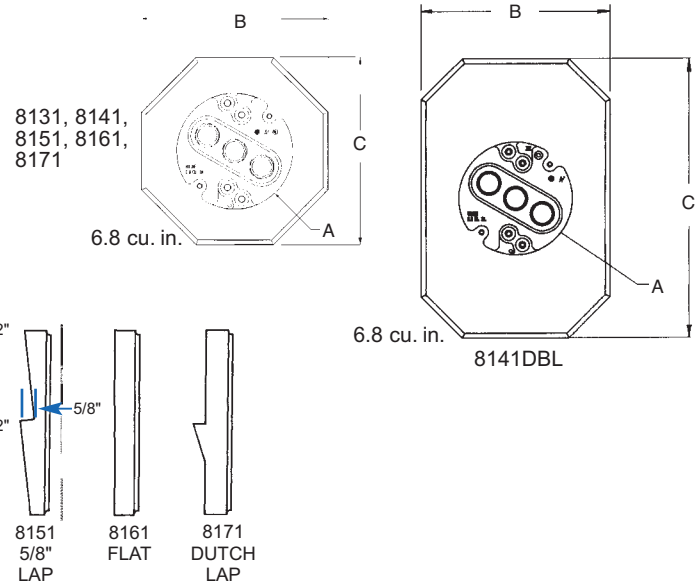
Siding Mounting Kits with Built-in Box

For smooth vertical mounting of light fixtures on all siding types. Kit includes mounting block with built-in electrical box, NM cable connector, and 4 screws. Paintable, UV rated plastic for long outdoor life.



CATALOG NUMBER	UPC/DCI/NAED MFG #018997	SIDING TYPE	UNIT	STD PKG	DIM A	DIM B	DIM C
8131	08131	1/4" & 5/16" Siding & Shingles	1	10	4" DIAMETER X 1/2" DEEP	6.625	6.625
8141	10751	1/2" Lap	1	10	4" DIAMETER X 1/2" DEEP	6.625	6.625
8141DBL	54524	1/2" Lap Double	1	10	4" DIAMETER X 1/2" DEEP	6.900	10.200
8151	10753	5/8" Lap	1	10	4" DIAMETER X 1/2" DEEP	6.625	6.625
8161	08161	Flat Surfaces	1	10	4" DIAMETER X 1/2" DEEP	6.625	6.625
8171	10757	Dutch Lap	1	10	4" DIAMETER X 1/2" DEEP	6.625	6.625

Add suffix "GC" to Catalog # when ordering in Canada, for example 8141GC.

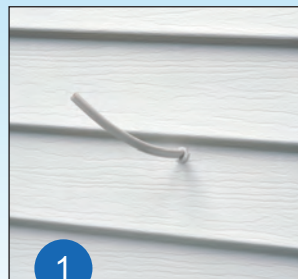


Features and Benefits

- Mounts light fixtures on all siding types, including T-111, HardiePlank® Lap Siding, and flat surfaces
- Fast and easy to install...after siding is up
- Textured, paintable surface
- NM cable connector included
- Built-in electrical box design ensures UL listed installation

Installation Instructions

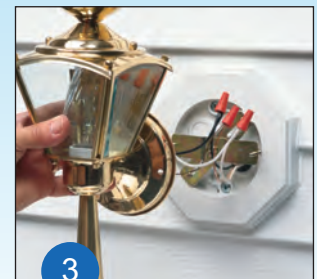
on Siding



1
Select location for light fixture and caulk opening around cable.



2
Remove knockout from electrical box and insert cable connector. Push cable through connector and position mounting block onto siding.



3
Secure mounting block with provided screws. Install fixture per manufacturer's instructions.



MEGA Siding Plate

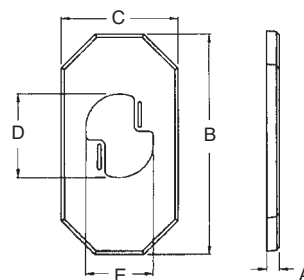
Use the 8100LP to convert octagonal size covers to MEGA covers for mounting large fixtures or coach lamps. UV rated plastic for long outdoor life.



CATALOG NUMBER	UPC/DCI/NAED MFG #018997	SIDING TYPE	UNIT PKG	STD PKG	DIM A	DIM B	DIM C	DIM D	DIM E
8100LP	10749	All Types	1	10	.783	3.500	7.125	5.125	4.105

Features and Benefits

- Accommodates light fixtures with mounting brackets up to 12"
- To center fixtures, use slotted mounting screw holes to provide adjustments up to 1"
- Provides a smooth, secure mounting surface for large fixtures
- Instantly converts a previously installed octagonal siding block to a MEGA Siding Plate
- Features alignment mounting slots to guarantee the MEGA Siding Plate will stay securely in position



Installation Instructions

The 8100LP MEGA Siding Plate is designed to install directly over the existing mounting block for installations of large light fixtures. If screw holes are offset, simply rotate the 8100LP 180°.

For use with Arlington's Siding Blocks ...

- 8131 • 8141 • 8141DBL
- 8151 • 8161 • 8171



SUPER MEGA Siding Plate

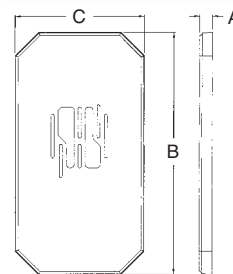
Converts existing octagonal block for installation of extra large light fixtures or coach lamps. Paintable, UV rated plastic for long outdoor life.



CATALOG NUMBER	UPC/DCI/NAED MFG #018997	SIDING TYPE	UNIT PKG	STD PKG	DIM A	DIM B	DIM C
8100MLP	10752	All Types	1	10	.838	16.000	8.500

Features and Benefits

- Supports light fixtures with canopies up to 8" wide x 15-1/2" tall
- To center fixtures, use slotted mounting screw holes to provide adjustments up to 2"
- Fits over all Arlington's octagonal siding blocks and 8091F
- Provides a sturdy, extra large mounting surface



Installation Instructions

Use with an existing mounting block. Disconnect electrical power. Align slots and secure the 8100MLP to the siding block. Install extra large fixture per manufacturer's instructions. If screw holes are offset, simply rotate the 8100MLP 180°.

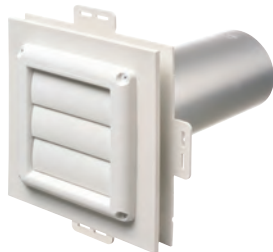
For use with Arlington's Siding Blocks ...

- 8091F • 8131 • 8141 • 8141DBL
- 8151 • 8161 • 8171



Dryer Vent Mounting Block Kit

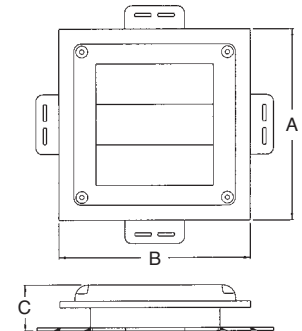
Non-metallic dryer vent mounting block for new construction.



CATALOG NUMBER	UPC/DCI/NAED MFG #018997	SIDING TYPE	UNIT PKG	STD PKG	DIM A	DIM B	DIM C
DV1	43607	All Types	1	1	7.226	7.226	1.738

Features and Benefits

- Provides a secure, attractive and time saving way to install dryer vents on new siding
- Installs before siding is up and fits 1/2" and 5/8" step, and dutch lap siding
- Textured, paintable surface
- Overhang covers cut ends of siding for a clean, neat look
- Easy to install – provides an attractive, flush-look mounting
- UV rated plastic for long outdoor life



Kit includes a low profile, louver-type hood; a snap together 4" diameter x 11" aluminum tube; and a siding block with built-in J-channel.

Siding Mounting Block

Mounting block with built-in electrical box for smooth vertical mounting of light fixtures on all siding types. Paintable. UV rated plastic for long outdoor life.



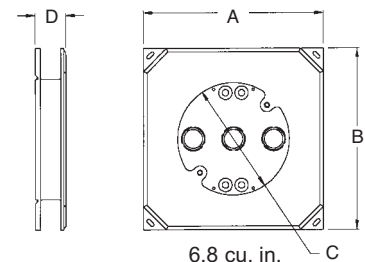
CATALOG NUMBER	UPC/DCI/NAED MFG #018997	SIDING TYPE	UNIT PKG	STD PKG	DIM A	DIM B	DIM C	DIM D
8141F	10761	All Types	10	10	6.652	6.652	4.125" Diameter x 1/2" Deep	1.126

Add suffix "GC" to Catalog # when ordering in Canada, for example 8141FGC.



Features and Benefits

- Installs before or after siding is installed. Remove break-away flanges for installation on previously sided structures.
- One-piece design
- Textured, paintable surface
- NM cable connector included



Installation Instructions

BEFORE siding is up...

1. Remove knockout from 8141F. Insert cable connector. Pull NM cable through connector.
2. Attach block to substrate with (2) screws mounted diagonally.
3. Install fixture according to manufacturer's instructions.

AFTER siding is up...

1. Cut hole in siding.
2. Break flanges off the back of the 8141F. Remove knockout. Insert cable connector in KO, then pull NM cable through connector.
3. Attach mounting block to substrate with (2) screws.
4. Install fixture according to manufacturer's instructions.

EASY TO INSTALL...
BEFORE OR AFTER
THE SIDING!



Weatherproof FS Outlet Box

For installing devices on all siding types. Paintable, UV rated plastic for long outdoor life.

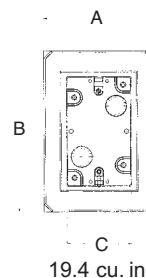


CATALOG NUMBER	UPC/DCI/NAED MFG #018997	SIDING TYPE	UNIT PKG	STD PKG	DIM A	DIM B	DIM C
FS8091F	17304	All Types	10	10	4.511	6.558	2.656

Add suffix "GC" to Catalog # when ordering in Canada, for example FS8091FGC.



E170558 LR49636



19.4 cu. in.

**EASY TO INSTALL...
BEFORE OR AFTER
THE SIDING!**

Costs Less Than Our 8081F and 8091F Siding Boxes

Features and Benefits

- Costs less...one-piece design
- For use with all single-gang devices, including GFCIs
- Installs before or after siding is installed. Remove break-away flanges for installation on previously sided structures.
- Can be installed vertically or horizontally
- For all types of siding
- Textured, paintable surface.
- UL listed

Installation Instructions

BEFORE siding is up...

1. Disconnect electrical power. Remove knockout. Insert cable connector. Pull NM cable through connector.
2. Attach outlet box to substrate with (2) screws.
3. Install device, FS8091F works with all single gang devices.

Complete installation with code required weatherproof while-in-use cover.



1



2



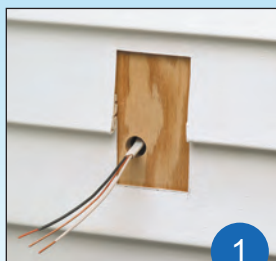
3

GFCI

Standard Outlet

AFTER siding is up...

1. Disconnect electrical power. Cut hole in siding.
2. Break flanges off the back of the FS8091F. Remove knockout. Insert cable connector in KO, then pull NM cable through connector.
3. Attach outlet box to substrate with (2) screws.
4. Install single gang device (standard or GFCI). Complete installation with code required weatherproof while-in-use cover.



1



2



3



4

Standard Outlet

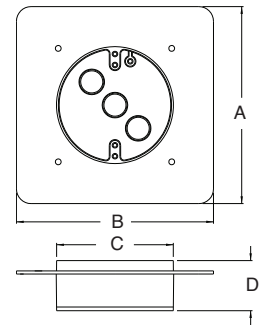
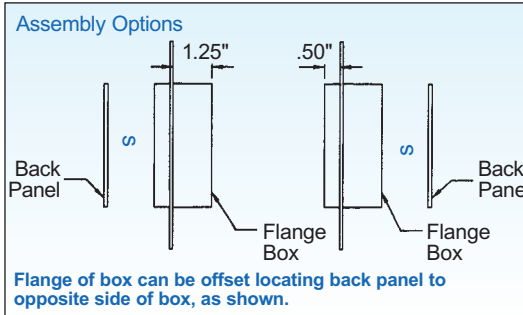
GFCI

Non-metallic FR Series Device & Fixture Box

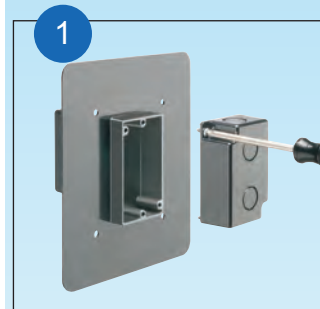
Flanged, reversible box for two different depths. Back panel works on either end of the box for both 1/2" or 1-1/4" depths. For new construction. Use for mounting coach lights on stucco and/or flat siding.



CATALOG NUMBER	UPC/DCI/NAED MFG #018997	APPLICATION	UNIT PKG	STD PKG	DIM A	DIM B	DIM C	DIM D
FR101F	12680	Device Box	10	10	7.875	7.125	3.750	3.525
FR405F	12681	Pan Box	10	10	6.750	6.750	4.000	1.375
FR420F	09615	Fixture Box	10	10	6.750	6.750	4.000	1.986



Installation Instructions



For 5/8" wall finish thickness, loosen two screws and remove the back.



Re-install the back on the OPPOSITE side of the box.



Assembled for 5/8" finish thickness.



Install supplied NM94 cable connector and NM900 plug as needed. Pull wire. Install box.



For 7/8" wall finish thickness install the 1/4" extension ring



Features and Benefits

- Wall mount – one-piece design for new installations
- Up to a 10 lb. fixture rating
- Ships with 1-1/4" box depth for foam/stucco applications
- Easily converts to 1/2" box depth by removing and reinstalling back plate
- The fixed flange is large enough to eliminate the need for a separate flashing
- No gasket needed to seal box from air infiltration
- Large 20 cubic inch volume
- Made of high strength polycarbonate



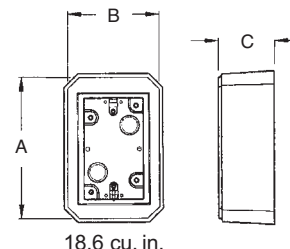
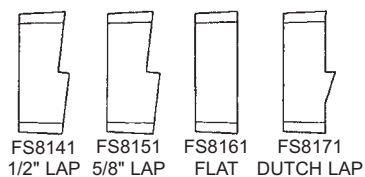
Weatherproof FS Boxes

One-piece construction electrical box provides a clean, weatherproof, UL Listed installation. Deep design for GFCIs. Paintable, UV rated plastic for long outdoor life.



CATALOG NUMBER	UPC/DCI/NAED MFG #018997	SIDING TYPE/STYLE	UNIT PKG	STD PKG	DIM A	DIM B	DIM C
FS8141	17340	1/2" Lap	25	25	5.093	3.312	2.056
FS8151	17341	5/8" Lap	25	25	5.093	3.312	2.056
FS8161	17342	Flat Surfaces	25	25	5.093	3.312	2.056
FS8171	17343	Dutch Lap	25	25	5.093	3.312	2.056

Add suffix "GC" to Catalog # when ordering in Canada, for example FS8141GC.



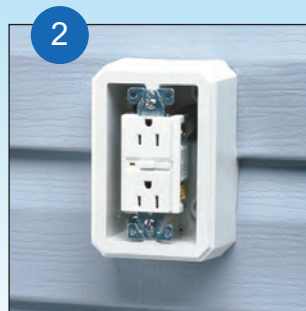
Features and Benefits

- Provides a solid, attractive, UL listed installation
- Accommodates GFCI, switches, and outlets
- For use with all siding types...1/2", 5/8", dutch lap, and flat surfaces

Installation Instructions



Remove KO from FS Box and insert NM cable connector. Push cable through connector and position box onto siding.



Mount box to siding and install your choice of either a GFCI, switch or duplex receptacle.

Complete installation with code required weatherproof while-in-use cover.

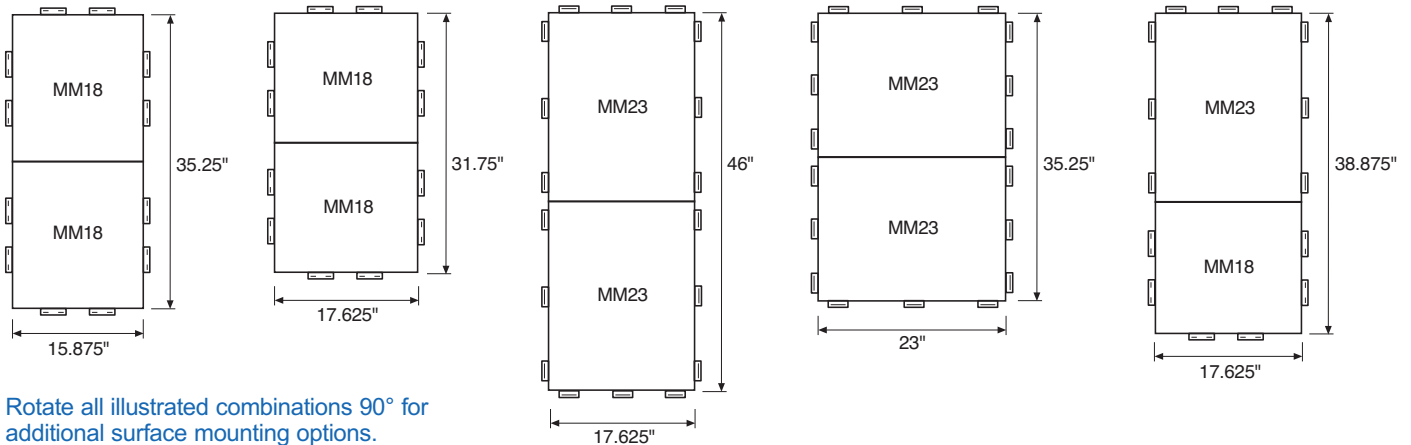
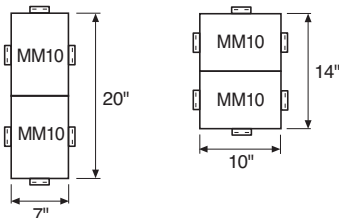
Meter Mounting Bases

One-piece construction.
Paintable. Gangable. UV rated plastic for long outdoor life.



MM10 mounting block also mounts disconnects, time clocks, cable TV boxes, and more!

Gangable Meter Base Combinations...

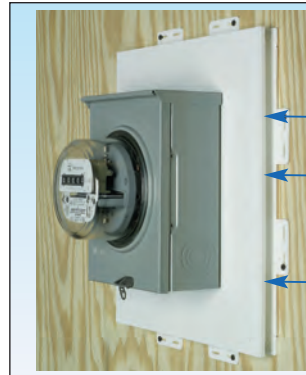


Rotate all illustrated combinations 90° for additional surface mounting options.

CATALOG NUMBER	UPC/DCI/NAED MFG #018997	SIDING TYPE	UNIT PKG	STD PKG	DIM A	DIM B	DIM C	DIM D
MM10	42278	All Types	10	10	.750	1.125	10.000	7.000
MM18	42280	All Types	10	10	.750	1.125	17.625	15.875
MM23	42282	All Types	10	10	.750	1.125	23.000	17.625

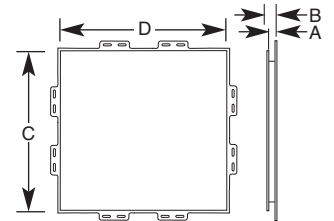
Installs before or after the siding is up and works with any siding type!

Installation Instructions... BEFORE siding is up



Note: For support, meter mounting nails or screws must penetrate through mounting base into substrate.

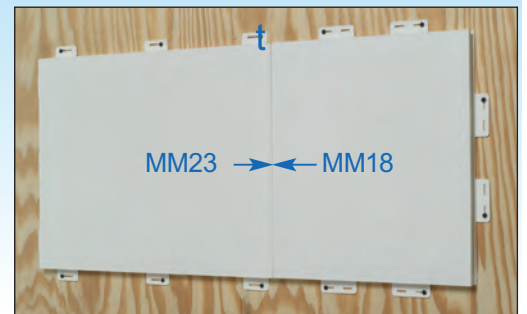
- Fasten to substrate through 'notched flanges'.
- Siding butts to edge of Meter Base, overlapping the 'notched flanges'.
- Meter Base mounting surface provides a 1" overhang to cover cut ends of siding.



Features and Benefits

- Provides a smooth, flat mounting surface
- Provides a 1" overhang to cover siding
- Gangable to accommodate most meter sizes
- Break off flanges for retrofit work

Seal joint channel with Arlington's DSC1 duct sealing compound. See page M-14.





Versatile Box for Power or Low Voltage

Mount security cameras,
fixtures, detectors, and more
inside or out.

New!

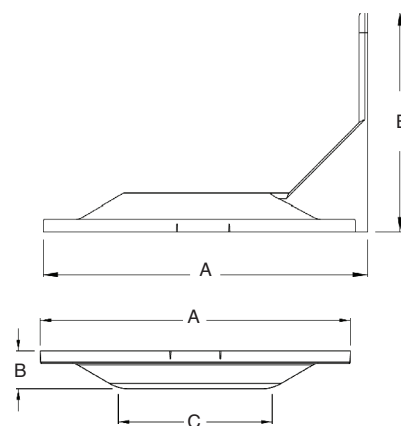
CATALOG NUMBER	UPC/DCI/NAED MFG #018997	DESCRIPTION	WEIGHT RATING	UNIT PKG	STD PKG	DIM A	DIM B	DIM C
8161BR	08881	Box w/ built-in bracket	50 lb/wall	1	10	10.921	6.451	-
8161BP	08880	Box w/ built-in base plate	50 lb/down rod	1	10	7.046	.844	3.500
8161CB	01530	Box w/ corner- mount bracket	50 lb/corner	1	5	10.921	6.451	-
8161PM	09020	Pole Mount Box	50 lb/pole	1	5	10.921	6.451	-
8161TR	00878	Box w/ threaded openings	50 lb/ceiling; 10 lb/wall	1	10	6.720	1.343	-

*Add suffix "GC" to Catalog # when ordering in Canada, for example 8161BRGC.



Features and Benefits

- Non-metallic, UV rated for long outdoor life
- For interior or exterior use in dry, damp or wet locations
- **OPTION** For cameras with base diameter smaller than 4.5" use Arlington's SC5 CAM-KIT™ camera mounting kit on top of the box.
- Mounts security cameras, electrical accessories and fixtures indoors or outdoors
- Screw pattern matches standard 4" fixture box
- Box includes 3/4" to 1/2" reducing bushing
- For dry, damp or wet locations



8161BR



8161BP



8161CB



8161PM



8161TR



Installation Shots



8161BP



8161BR



8161CB

Scan For Video



CAM-LIGHT™ BOX for Suspended Ceilings

Offers a great way to install fixtures and smoke detectors (and more) on a suspended ceiling, drywall ceiling or wall.



FL430

Features and Benefits

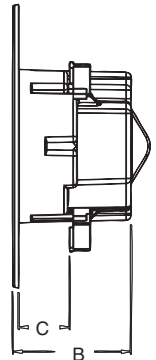
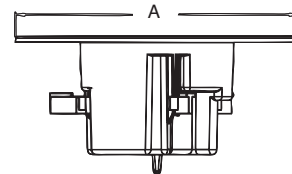
- Designed to install fixtures and more to a suspended ceiling panel – fast with a 4" hole saw
- Rated up to 50 lbs on a suspended ceiling (or drywall ceiling) in combination with the drop wire for support
- Rated up to 10 lbs on a drywall ceiling without drop wire (not for fixtures)
- Rated up to 7 lbs on walls
- Drop wire provides overhead support.
- Mounting wings hold bracket securely against wall when screws are tightened
- Box may be turned to any angle for proper inline positioning of exit signs and direct lighting
- White, non-metallic, paintable flange
- Steel box version for use where metal raceways are required
- Steel version installs with 4-1/2" hole saw
- Boxes have 1/2" and 3/4" knockouts
- To install a security camera on this box check out our CAM-KIT™ camera mounting kit (SC5) on page M-4

CATALOG NUMBER	UPC/DCI/NAED MFG #018997	DESCRIPTION/ CUBIC INCHES	UNIT	STD PKG	DIM A	DIM B	DIM C
FL430*	09740	Non-Metallic / 27.0	1	10	7.380	3.085	1.331
FL430S	09741	Steel / 17.0	1	10	7.345	2.375	1.688

*Add suffix "GC" to Catalog # when ordering in Canada, for example FL430GC. Box includes 12' of drop wire, and box. Non-metallic box also includes (2) NM94 cable connectors.



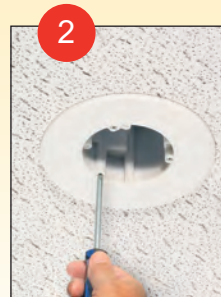
FL430S



Installation Instructions - FL430 for Fixtures



1 Cut hole in a ceiling grid with 4" hole saw. 4-1/2" for steel.



2 Install CAM-LIGHT™ box. Rotate to desired position. Tighten mounting wing screws.



3 Add drop wire to loop. Attach to framing member above.



4 **To Complete:** Using the appropriate KO (1/2" or 3/4") install NM94 cable connector (supplied) and pull cable. Install fixture per manufacturer's instructions.

Scan For Video





CAM-BOX™ KIT for Installations of a Security Camera

For installation of most security cameras on suspended ceilings, drywall ceiling, exterior soffits, or wall.



FLC430

Features and Benefits

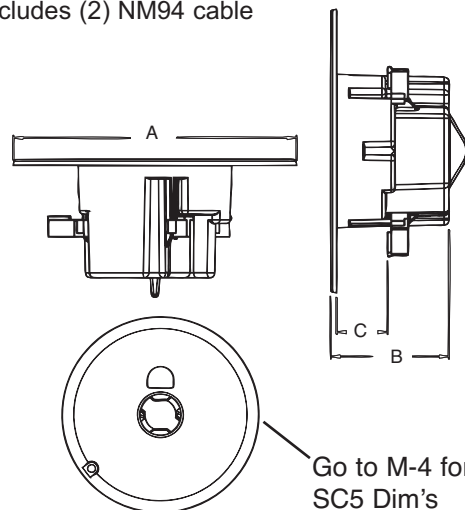
- Designed to install security cameras to a suspended ceiling panel – fast with a 4" hole saw
- Rated up to 50 lbs on a suspended ceiling (or drywall ceiling) in combination with the drop wire for support
- Rated up to 10 lbs on a drywall ceiling without drop wire
- Rated up to 7 lbs on walls
- For security cameras, it fits any hole pattern because you drill the holes in the appropriate location in the flange, cameras with mounting holes set wider than 4.5" apart install directly to the box flange
- Mounting wings hold bracket securely against wall when screws are tightened
- White, non-metallic, paintable flange box
- Steel version for use where metal raceways are required
- Steel version installs with 4-1/2" hole saw
- 1/2" and 3/4" knockouts
- Box rotates in either direction for proper camera position

CATALOG NUMBER	UPC/DCI/NAED MFG #018997	DESCRIPTION/ CUBIC INCHES	UNIT	STD PKG	DIM A	DIM B	DIM C
FLC430*	09742	Non-Metallic / 27.0	1	10	7.380	3.085	1.331
FLC430S	09743	Steel / 17.0	1	10	7.345	2.375	1.688

*Add suffix "GC" to Catalog # when ordering in Canada, for example FLC430GC. Kit includes 12' of drop wire, box, bracket, mounting plate, and installation screws. Non-metallic box also includes (2) NM94 cable connectors.



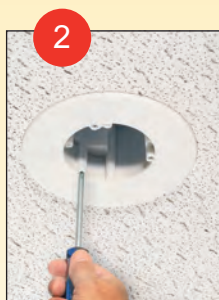
FLC430S



Installation Instructions - FLC430 for Security Cameras



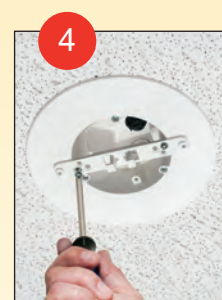
1 Cut hole in a ceiling grid with 4" hole saw. 4-1/2" for steel.



2 Install CAM-BOX™ kit. Rotate to desired position. Tighten mounting wing screws.



3 Add drop wire to loop. Attach to framing member above.



4 Add bracket to the box using screws provided.



5 Attach camera to mounting plate (screws provided). Box fits any camera hole pattern because YOU drill the holes in the appropriate location in the flange.



6 With camera mounted, install the mounting plate to the box by placing it on the bracket and turning clockwise to lock. Install set screw.



Finished installation.

For camera installations on existing boxes, check out our CAM-KIT™ camera mounting kit on page M-4

Scan For Video



CAM-KIT™

Security camera mounting kit. Universal bracket mounts to 3-1/2" and 4" round or octagonal boxes and single-gang device boxes. Also fits FL430 CAM-LIGHT™ BOX.



SC5

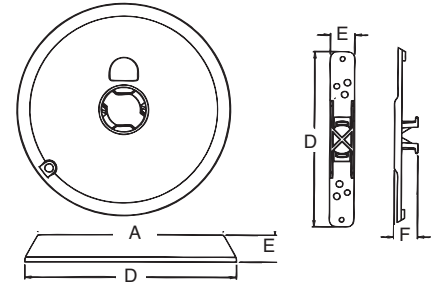
CATALOG NUMBER	UPC/DCI/NAED MFG #018997	UNIT PKG	STD PKG	DIM A	DIM B	DIM C	DIM D	DIM E	DIM F
SC5	18058	1	20	4.875	5.564	.703	5.375	.750	.718

Includes 5" plastic mounting plate, camera mounting bracket and mounting screws.



Features and Benefits

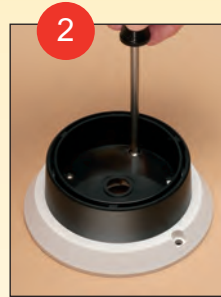
- Fits any camera hole pattern
- Low cost
- Installs in less than two minutes
- Installs cameras with a base diameter up to 4-1/2"



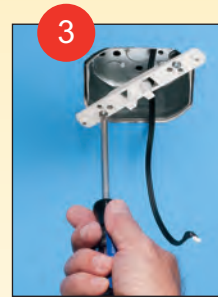
Installation Instructions - SC5 for Security Cameras



1 Use your camera base as a template and drill holes.



2 Attach camera to mounting plate (screws provided).



3 Mount the bracket to the existing box using screws provided.



4 With camera mounted, install the mounting plate to the box by placing it on the bracket and turning clockwise to lock. Install set screw.



Finished installation.

Scan For Video





Weatherproof, Non-Metallic Keypad Enclosures

Keypad cover protects against moisture and weather. Accommodates single or double-gang boxes and most keypad styles. Heavy-duty, white enclosure with paintable white or clear plastic cover.

New!

CATALOG NUMBER	UPC/DCI/NAED MFG #018997	DESCRIPTION	UNIT PKG	STD PKG	DIM A	DIM B	DIM C
DBK55C	77664	Clear, Inside Size 5" x 5" x 1-1/2"	1	10	6.207	5.733	1.937
DBK55W	77665	White, Inside Size 5" x 5" x 1-1/2"	1	10	6.207	5.733	1.937
DBK88C	77662	Clear, Inside Size 7-1/2" x 7-1/2" x 1-1/2"	1	5	8.140	8.480	1.810
DBK88W	77663	White, Inside Size 7-1/2" x 7-1/2" x 1-1/2"	1	5	8.140	8.480	1.810



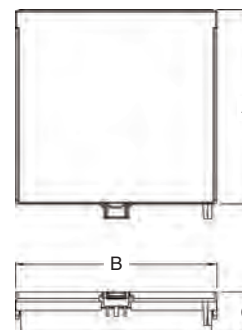
DBK88C



DBK88W

Features and Benefits

- Provides keypad protection (weatherproof with closed cover/vertical mounting)
- Versatile mounting, our keypad enclosure mounts horizontally or vertically
- Suitable for indoor or outdoor use
- Can be mounted, with or without a box, on flat surfaces for low voltage keypads
- Includes gasket
- Universal hole pattern accommodates most keypads and single, 2-gang, or 4x4 boxes!
- Lockable cover



DBK88C - Weatherproof keypad enclosure!



(keypad not included)

Non-Metallic Exterior Keypad Enclosures

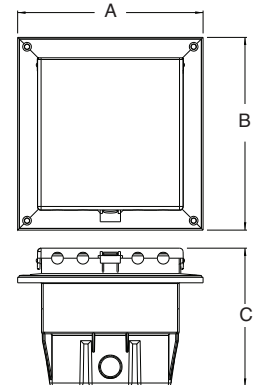
Keypad cover protects against moisture and weather. Heavy-duty, white enclosure with paintable white or clear plastic cover.

New!

CATALOG NUMBER	UPC/DCI/NAED MFG #018997	DESCRIPTION	UNIT PKG	STD PKG	DIM A	DIM B	DIM C
DBLVM2C	13580	Clear, New Construction	1	4	6.888	7.159	5.131
DBLVM2W	13581	White, New Construction	1	4	6.888	7.159	5.131
DBLVR2C	13582	Clear, Retrofit	1	4	6.888	7.159	5.131
DBLVR2W	13583	White, Retrofit	1	4	6.888	7.159	5.131
DBLVS2C	13584	Clear, New Construction	1	4	6.888	7.159	5.131
DBLVS2W	13585	White, New Construction	1	4	6.888	7.159	5.131

Features and Benefits

- White non-metallic 2-gang recessed enclosure with heavy-duty, clear or paintable white plastic cover
- Styles for new construction: stucco, textured surfaces, vinyl and rigid siding – and retrofit
- Fits most keypads and digital controllers
- Inside dimensions: 5" x 5"
- Textured, paintable trim plate covers edges of finished wall surface
- Horizontal or vertical mounting (raintight ONLY when mounted with latch at bottom)



DBLVS2C



DBLVS2C



DBLVS2C



(keypad not included)



Non-Metallic Enclosures

Made of heavy-duty, non-metallic material.

New!

CATALOG NUMBER	UPC/DCI/NAED MFG #018997	DESCRIPTION	UNIT PKG	STD PKG	DIM A	DIM B	DIM C
EB0708	12672	7" x 8" x 3.5"	1	4	8.522	8.233	3.812
EB1111	12670	11" x 11" x 3.5"	1	5	11.916	13.133	3.812
EB1212	12671	12" x 12" x 4"	1	5	12.519	13.573	4.688
EBL1	11400	Optional Cam Lock	1	10	-	-	-



EB0708



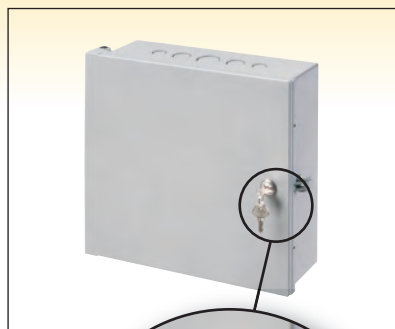
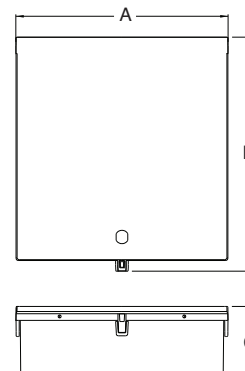
EB1111 w/ EBL1



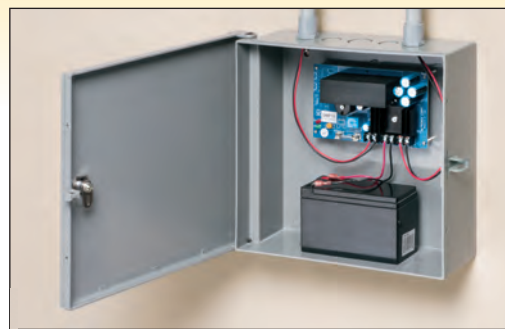
EB1212

Features and Benefits

- Optional cam lock, **sold separately**
- Handy 1/2" and 3/4" knockouts on top and bottom of enclosure box
- Non-metallic



Optional Cam Lock, EBL1





Multiple Gang Recessed TV BOX™ for Power and Low Voltage

For new or existing construction. Non-metallic, recessed combo boxes for power and low voltage for class 2 wiring of satellite or cable TV, speakers, etc.



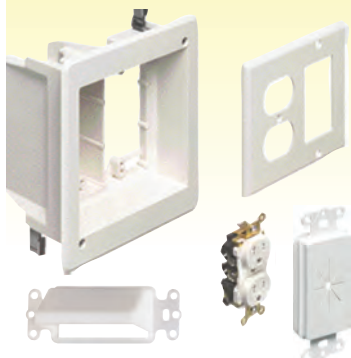
TVBU507



TVBU507BL

TVBR505K Kit

Includes: Recessed combo box; (1) tamper-resistant duplex receptacle; (1) CEDH1 & (1) CED130; and (1) wall plate.



Scan For Video

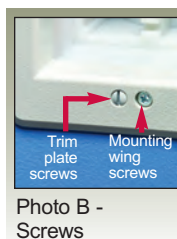


Photo B -
Screws

CATALOG NUMBER	UPC/DCI/NAED MFG #018997	DESCRIPTION	UNIT	STD PKG	DIM A	DIM B	DIM C
TVBU505*	90680	2-Gang, White, (1) Power/ (1) LV	1	4	6.942	6.254	3.750
TVBU505BL*	09681	2-Gang, Black, (1) Power/ (1) LV	1	4	6.942	6.254	3.750
TVBR505K*	09682	Kit, 2-Gang, White, (1) Power/ (1) LV	1	4	6.942	6.254	3.750
TVBU507	09661	3-Gang, White, (1) Power/ (2) LV	1	4	7.930	6.818	3.875
TVBU507BL	09662	3-Gang, Black, (1) Power/ (2) LV	1	4	7.930	6.818	3.875

Add suffix "GC" to Catalog # when ordering in Canada, for example TVBU505GC.

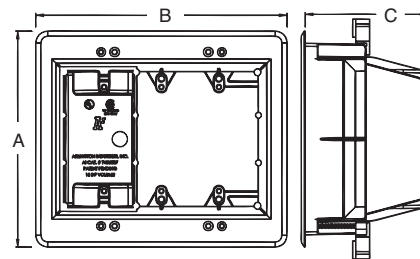
*Optional box covers available on page P-9.



E170558 LR49636

Features and Benefits

- Recessed combo box allows you to mount LCD/plasma TVs and other system components flush against the wall
- For new work...Use supplied screws to install on stud. For convenience, box positioning tabs are set for 1/2" or 5/8" drywall
- Trim plate is textured/paintable and covers edges of cut wall surface
- Mounting wings hold bracket securely against wall when screws are tightened
- For walls up to 1-1/2" thick
- Use with Arlington's SCOOP™ series entrance hoods and plates (see pages O-6 to O-8)



18.0 cu. in. TVBU507

Includes...

Recessed combo box; (1) trim plate; (1) decorator style cover plate; and installation screws.

Installation Instructions - New Work (TVBU507 shown)



Attach box to stud. Use tabs for proper positioning of box depth. See 2.



Positioning tabs are set for 1/2" or 5/8" drywall.



Attach paintable trim plate with screws provided. See Photo B.



Tighten mounting wing screws to pull the box securely against the wall board. See Photo B.

Retrofit Work (TVBU507 shown)



Using box, without trim plate as a template, mark location. Cut hole.



Attach trim plate to box. See Photo B. Pull wire/cables. Install box assembly in opening.



Tighten mounting wing screws to pull the box securely against the wall board. See Photo B.



TVBU505 with power in one side; low voltage in the other. CED13 (page O-6) used to secure wall plate to box.

Recessed Steel TV BOX™ *New!*

For new or existing construction. Metallic, recessed combo boxes for power and/or low voltage for class 2 wiring of satellite or cable TV, speakers, etc.



TVBS505



TVBS507



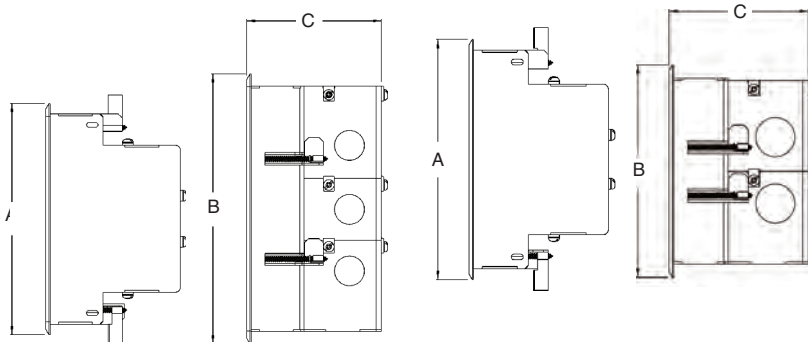
TVBS613

Features and Benefits

- Steel box with non-metallic paintable white or black trim plate
- Easy to install, secure installation
- Mounting wings on two-gang and three-gang styles hold boxes securely against the wall in retrofit projects
- Boxes screw-mount to stud in new construction
- Two hour fire rating
- Optional covers for unused boxes

CATALOG NUMBER	UPC/DCI/NAED MFG #018997	DESCRIPTION	UNIT PKG	STD PKG	DIM A	DIM B	DIM C
TVBS505*	37955	2-Gang steel box w/ white non-metallic trim plate	1	1	6.818	6.698	3.937
TVBS507	37956	3-Gang steel box w/ white non-metallic trim plate	1	1	6.818	7.930	3.937
TVBS613	09633	4-Gang steel box with white non-metallic trim plate	1	1	7.000	17.000	3.848
TVBS613BL	09660	4-Gang steel box with black non-metallic trim plate	1	1	7.000	17.000	3.848
TVB613C	09631	4-Gang white cover	5	5	7.000	17.000	.127

*Optional box covers available on page P-9.



Installation Instructions



New Work

Attach box to stud using #6 screws. Pull wires. (New Installation)



Retrofit

Cut a hole using enclosure, without trimplate, as a template. (Mounting wings hold box in wall. Retrofit)



After drywall is installed, add trim plate, then install enclosure assembly to the wall with outer screws.



Finished Installed Shot.

Scan For Video





Plastic Recessed TV Box™ with Angled Openings

For new or existing construction. Non-metallic, recessed combo boxes for power and low voltage for class 2 wiring of satellite or cable TV, speakers, etc.

New!

CATALOG NUMBER	UPC/DCI/NAED MFG #018997	DESCRIPTION	UNIT PKG	STD PKG	DIM A	DIM B	DIM C
TVB712	09712	Power and/or low voltage	1	1	10.210	7.561	3.906
TVB713	09713	Power and multiple low voltage openings w/ interchangeable tray.	1	1	17.000	7.000	3.906
TVB613C	09631	4-Gang white cover	5	5	17.000	7.000	.127

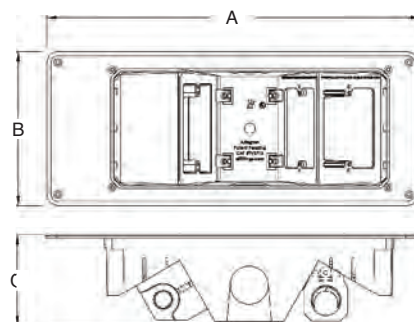
Add suffix "GC" to Catalog # when ordering in Canada, for example TVB713GC.



TVB712



TVB713



Installation Instructions

Retrofit



Cut a hole using enclosure next to stud. Use box without trim plate, as a template. Pull Wires and insert box in hole.



Assemble trim plate. (Retrofit must also use a minimum of (2) #6 x 1-5/8" wood screws in adjacent stud.)

New Work



Attach box to stud through slotted holes. Use minimum of (2) #6 x 1-5/8" wood screws. Pull wires.



Installed TVB712.

Installed TVB713.



Features and Benefits

- Non-metallic, paintable trim plate
- For new or old work
 - Positioning tabs for 1/2" wall thickness assure accurate placement on stud in new construction
 - For retrofit, use enclosure (without the trim plate) as a template for the wall opening
- Optional cover available for TVB713

Scan For Video



Recessed TV BOX™ for Power and Low Voltage

Non-metallic and metallic, combination power and low voltage box. For power and phone/cable/speaker/surround sound installations.



TVB613

Note: Receptacle and cover plates are not included.



TVB613C

CATALOG NUMBER	UPC/DCI/NAED MFG #018997	DESCRIPTION/ PLATE COLOR	UNIT PKG	STD PKG	DIM A	DIM B	DIM C
TVB613	09630	4-Gang w/ white trim plate	1	1	7.000	17.000	3.880
TVB613BL	09634	4-Gang w/ black trim plate	1	1	7.000	17.000	3.880
TVB613C	09631	4-Gang white cover	1	1	7.000	17.000	.127

Add suffix "GC" to Catalog # when ordering in Canada, for example TVB613GC.

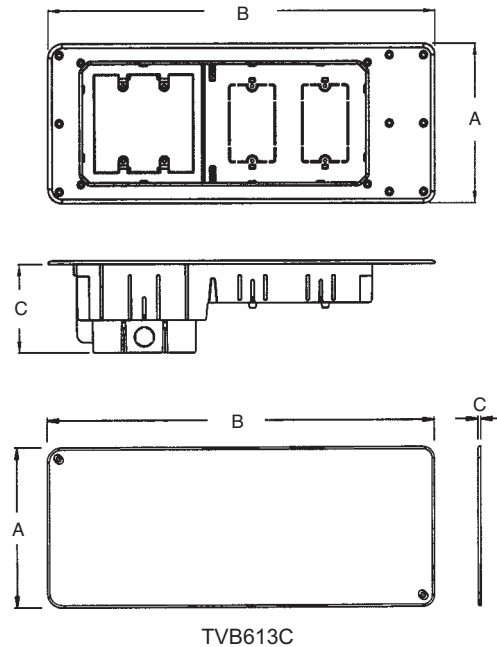


E170558 LR49636

Features and Benefits

- Use metallic boxes where metal raceways are required
- Perfect for flat screen plasma/LCD televisions
- For new or existing construction
- Recessed, so plugs do not protrude from wall
- Trim ring covers cut edge of drywall
- Trim ring (TVB613) and cover (TVB613C) are textured/paintable
- (2) low voltage mounts are built-in
- Low voltage separator provided for built-in 2-gang device box so power and low voltage can be combined

TVB613
26.0 cu.in.



Home Theater / AV

Install Shots



TVB613



TVB613C

Scan For Video





TV BRIDGE™ II Kits

Non-metallic pre-wired, *New!* pre-assembled box kits for flat screen TV installations.

Features and Benefits

- Pre-wired for easy install
- Mounting wing screws hold the boxes secure against the wall
- Plugs and connections stay inside the recessed boxes so TV mounts flush against the wall
- No mess! - wires stay hidden behind the wall

CATALOG NUMBER	UPC/DCI/NAED MFG #018997	DESCRIPTION	UNIT PKG	STD PKG
TVBRA1K	24180	w/ single-gang boxes	1	1
TVBRA2K	24181	w/ 2-Gang power/low voltage box	1	1
TVBRA3K	24195	2-Gang power/low voltage box	1	1
TVB712BK	12781	w/ 2-Gang power/low voltage box (power w/ angled opening)	1	1

*Add suffix "GC" to Catalog # when ordering in Canada, for example TVBRA1KGC.



	Kits			
	TVBRA1K	TVBRA2K	TVBRA3K	TVB712BK
Contents	Single gang recessed box containing an outlet is connected to 7 feet of NM cable. Second single gang recessed box connected to the NM cable and includes a pre-wired 4 foot 110V outlet plug, trim, and face plate.	Double gang recessed box containing low-voltage and power outlet connected to 7 feet of NM cable. Second Double Gang recessed box containing low-voltage and power connected to the NM cable and includes a pre-wired 4 foot 110V outlet plug, trim plate and face plate.	Double gang recessed box containing low-voltage and power outlet connected to 7 feet of NM cable. Second single gang recessed box connected to the NM cable and includes a pre-wired 4 foot 110V outlet plug, trim, and face plate.	Double gang recessed box containing low-voltage and an angled power outlet connected to 7 feet of NM cable. Second Double Gang recessed box containing low-voltage and power connected to the NM cable and includes a pre-wired 4 foot 110V outlet plug, trim plate and face plate.

Installation Instructions



Cut Top hole in wall for the TV. Cut Lower hole directly below the top hole, close to existing outlet. Drop the pre-wired device box assembly and cable through the top hole. Insert box and tighten wings.



Pull pre-wired device assembly through the bottom hole.

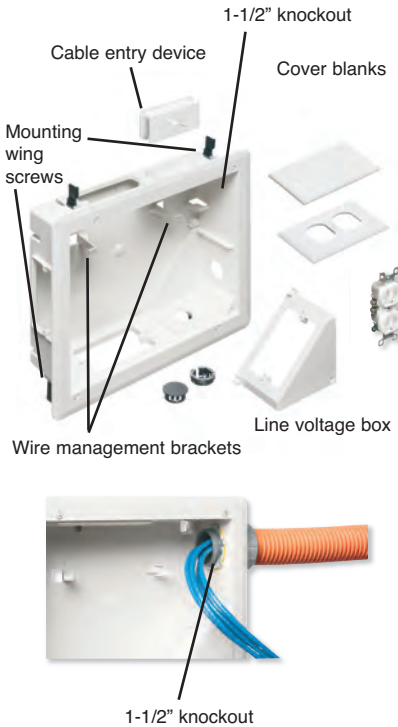


Attach device box to trim plate with screws provided. Secure trim plate to wall with mounting wing screws. Install CED130 in 2-Gang boxes. Pull cables.



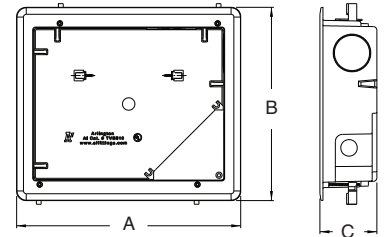
8 x 10 TV BOX™

Non-metallic, installation versatility, and perfect for Home Theater Installations. *New!*



CATALOG NUMBER	UPC/DCI/NAED MFG #018997	DESCRIPTION	UNIT PKG	STD PKG	DIM A	DIM B	DIM C
TVB810	24184	8"x10" power/low voltage box	1	1	11.810	10180	3.000

*Add suffix "GC" to Catalog # when ordering in Canada, for example TVB810GC.



Features and Benefits

- Accepts standard-style plates with receptacles and decorator-style devices with plates - and Arlington's SCOOP™ series entrance plates and hoods
- Mounting wing screws hold box secure against wall
- Supplied with cover blanks, wall plate, a SCOOP cable entry device (CED130) and cable connectors for unused openings
- 1-1/2" knockout for ENT or other low voltage wiring
- UL/CSA Listed

Install Shots

Ideal for home theater systems where multiple connections are needed for sound systems, satellite TV, cable TV, DVRs, and more.

Can be installed horizontally or vertically





Low Voltage Mounting Brackets

Single through 4-gang brackets for installations on existing construction. Designed to install LOW VOLTAGE Class 2 ONLY.

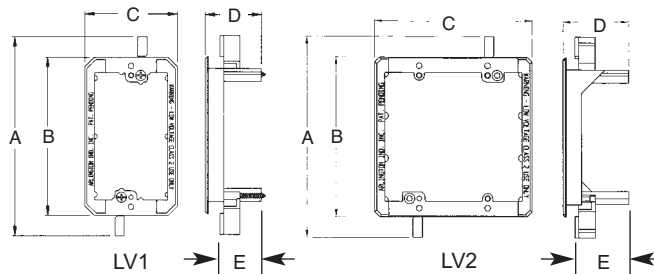
CATALOG NUMBER	UPC/DCI/NAED MFG #018997	UNIT PKG	STD PKG	DIM A	DIM B	DIM C	DIM D	DIM E
LV1	58175	10	100	5.460	4.250	2.500	1.690	1/4" - 1"
LV2	10952	5	50	5.460	4.250	4.185	1.750	1/4" - 1"
LV3	09600	5	50	5.570	4.250	6.000	1.700	1/4" - 1"
LV4	09601	5	50	5.570	4.250	7.810	1.700	1/4" - 1"

Dim E refers to wall thickness adjustment.



Features and Benefits

- Non-metallic – better than metal and costs less too!
- For communications, cable TV, computer wiring.
- CAT 5 listed
- Adjusts to fit 1/4" to 1" thick wallboard, paneling, or drywall
- Bracket is its own template for cut out
- Mounting wings hold bracket securely against wall when screws are tightened



For Low Voltage Fire Alarm Installations too!

Arlington's LV2, for existing construction, and LVMB2, for new construction (see pg. O-4), can also be used for the installation of fire alarms.

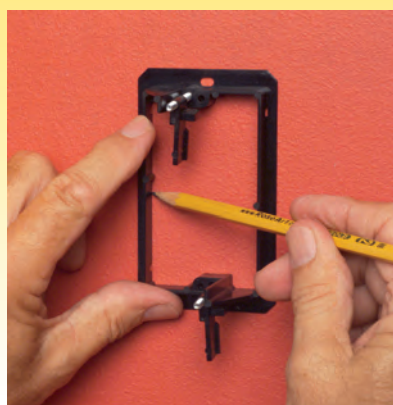
LV1

LV2

LV3

LV4

Installation Instructions



Locate bracket position. Level. Trace inside of LV1 and cut on the outside of the line.