



# WPX LED Full Cut-off Wall Packs

Customer Training – July 2020

---



Note: Product Specifications subject to change without notice.



**AcuityBrands.**

©2018 Acuity Brands Lighting, Inc.

## Elevator Pitch – Architectural Looks at Stock Prices

LED wall packs provide significant energy-savings when replacing existing HID wall packs. To date, your customers have had to sacrifice aesthetics and performance in order to get the desired low initial cost. The all-new Lithonia Lighting® WPX family of LED wall packs is the only solution that meets customers' need for an aesthetically appealing form, photometric performance and low initial cost. The result are installations that your customers can be proud of for both their sustainability and their architecture.

With three sizes and lumen packages of 1,550 – 9,200 lumens the Lithonia Lighting® WPX family is a site-wide solution, replacing up to 400W HID wall packs. And since the WPX footprints are larger than that of typical HID glass wall packs, they fully cover unsightly stains, resulting in a neat application without the need for additional patch and repair. Emergency egress battery, photocell, CCT and finish options make the WPX configurable to meet the needs of any application.

The Lithonia Lighting® WPX is the new standard in wall-mounted lighting providing customers with the architectural form and photometric performance they want at the low initial cost they need.



# The Lithonia Lighting® WPX Story: Features and Benefits Video





# Lithonia WPX LED Wall Packs



*The Better Distributor Stock Solution*

# A Complete Wall Pack Solution



	WPX1 P1	WPX1 P2	WPX2	WPX3
<b>Lumen Output</b>	1,550	2,900	6,000	9,200
<b>Input Power</b>	11W	24W	47W	69W
<b>Efficacy</b>	136	121	127	133
<b>HID Replacement</b>	35W - 70W	100W - 175W	250W	400W
<b>Dimensions</b>	11.1" x 8.1" x 3.2"	11.1" x 8.1" x 3.2"	12.3" x 9.1" x 4.1"	13" x 9.5" x 5.5"

- Architectural design
- Covers HID wall pack stains
- Superior illumination
- Easy to install
- Integral emergency battery options
- DLC Listed
- Affordably priced
- Always in stock

# Lithonia WPX – Better Wall-Mounted Lighting

## Architectural Design:

Clean lines seamlessly blend with the architecture of any building

## More Options:

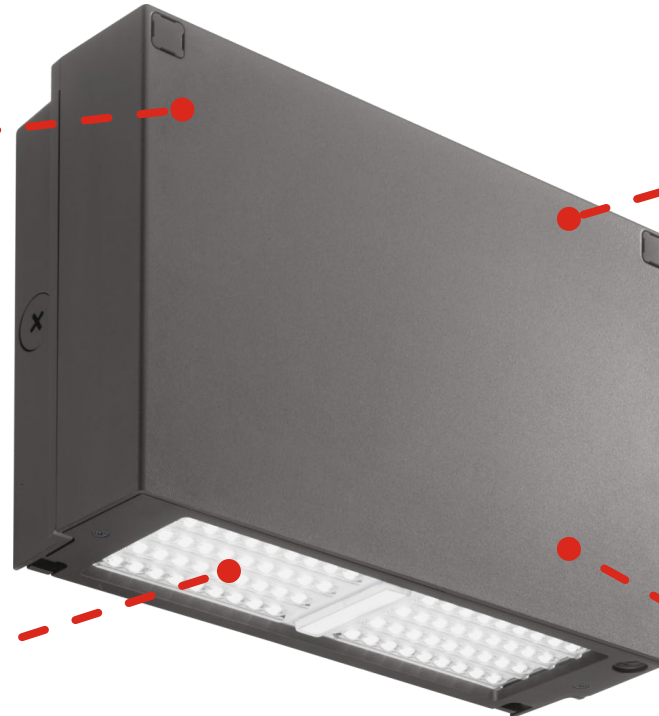
CCT, photocell, emergency egress battery options

## Better Illumination:

Wider spacing and less glare than COB-based products

## Easy to Install:

Integrated wiring compartment, Footprint covers stains



Clean lines and a simple geometric shape is preferred by lighting designers and architects.





A uniform, wide lighting distribution provides an illumination upgrade with greater luminaire spacing.





## Better Illumination

- Wide, uniform distribution; Great for HID replacement and value engineered design-build
- LED array for minimal glare and visually pleasing illumination; No high intensity chip-on-board LEDs that cause discomfort glare

# The Better Solution for HID Glass Wall Pack Replacement



## LED Glass Wall Packs

- Decades-old HID design
- Covers the stains
- Unwanted uplight - not cut-off



## Yesterday's Solution

- Dated finned aesthetic
- Does not cover stains
- COB is extremely glary



## Lithonia WPX

- Architectural design
- Fully covers the stains
- Superior illumination

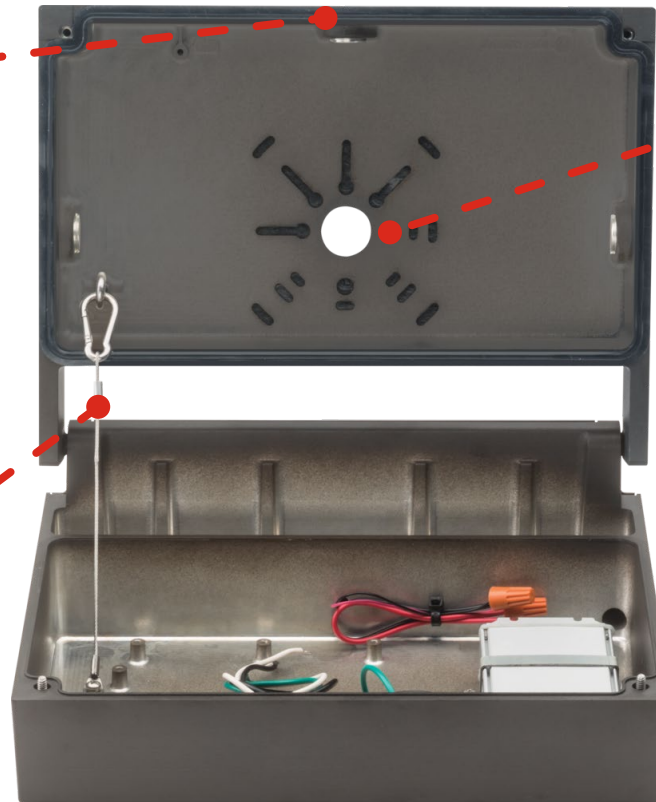
# The Better Solution for HID Glass Wall Pack Replacement



# Easy Installation

Three integral ½” NPT threaded conduit hubs for surface conduit

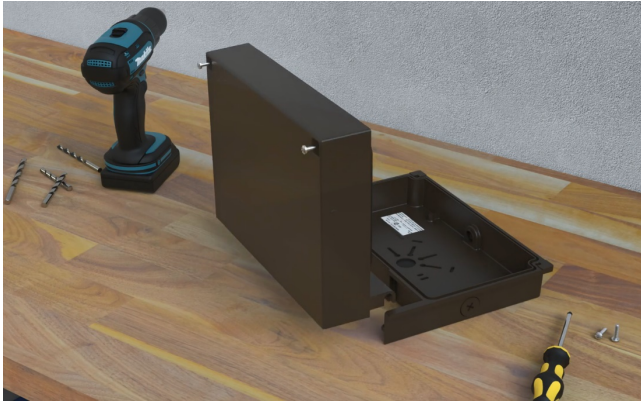
Contractor-friendly tether holds the WPX during installation



Mounts directly over standard recessed or surface-mount junction boxes

Emergency egress battery option is self-contained

# Easy Installation



1. Remove and set aside the beauty plugs. Loosen the screws. Detach the front half of the luminaire.



2. WPX installs directly on junction boxes, or with poke-through wiring.



3. Mount the back plate using the junction box screw hole pattern.



4. Attach the front half using the cable and hook.



5. Make connections in the integral wiring compartment.



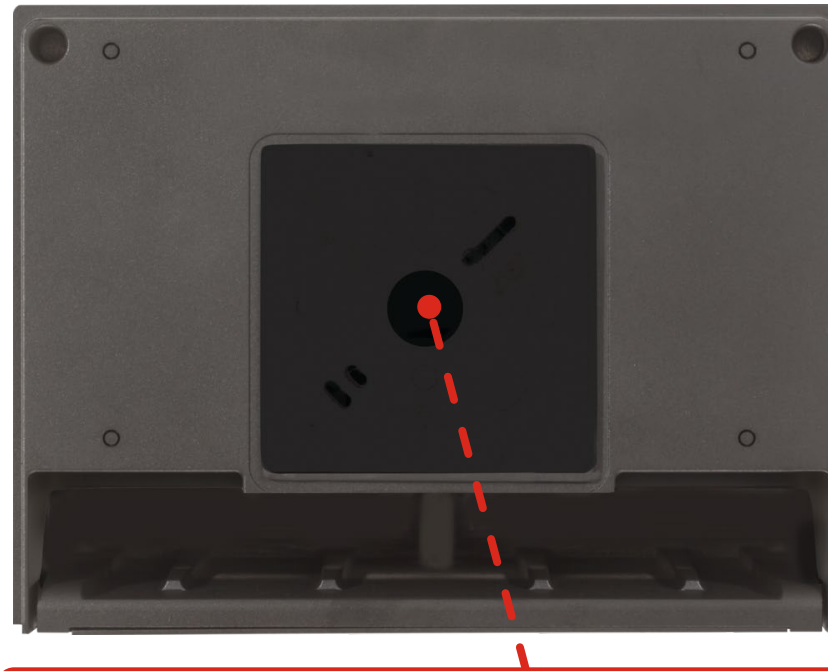
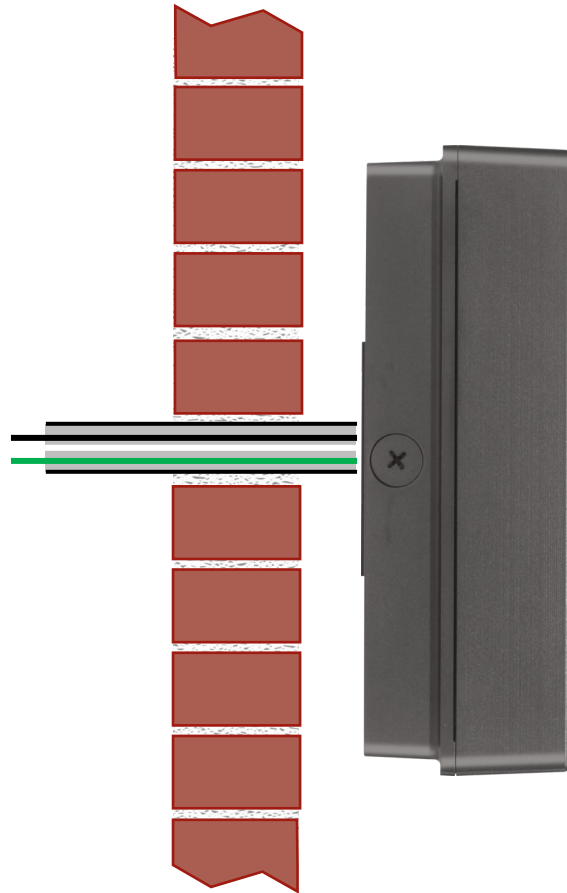
6. Close the luminaire. Fasten the screws, replace beauty plugs. Your WPX wall pack is ready to use!



# The Lithonia Lighting® WPX: Installation Video



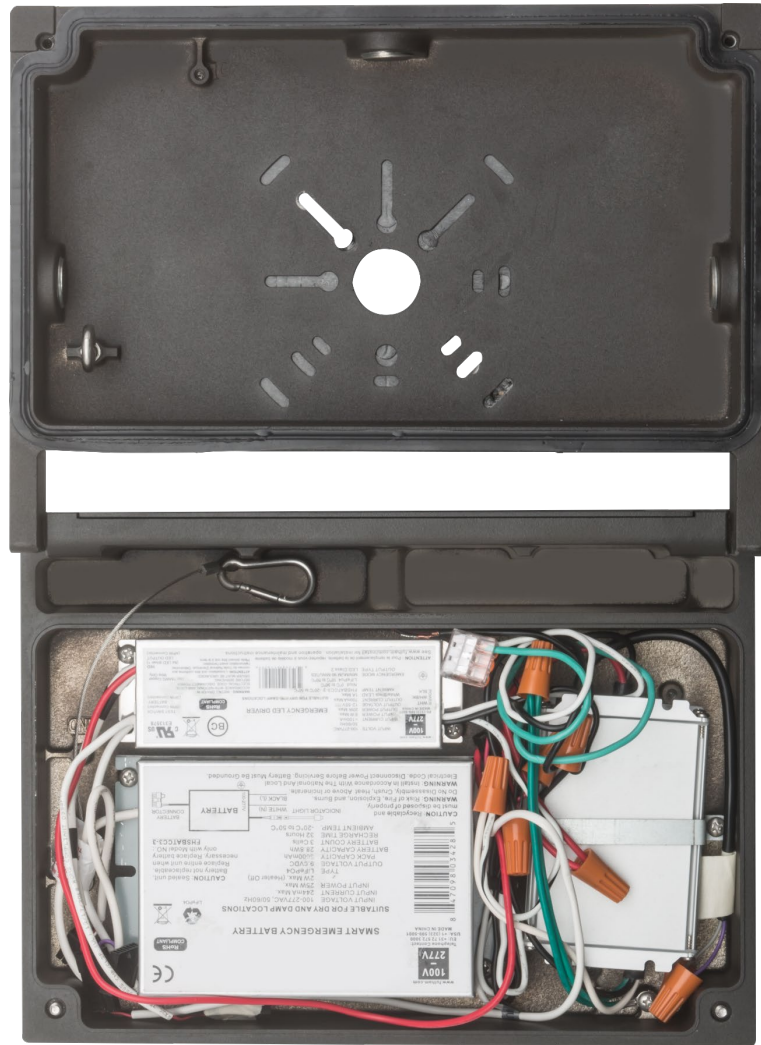
# Easy Installation – Poke-Through Wiring



Integral junction box allows for easy installation with “poke-through” wiring found in corrugated metal buildings



# Emergency Battery Pack Options



Test Switch



	Standard (0°C min)	Cold (-20°C min)
WPX1	4W (E4WH)	14W (E14WC)
WPX2	4W (E4WH)	14W (E14WC)

## Sample Nomenclatures:

WPX2 LED 40K MVOLT **E4WH** DDBXD

WPX2 LED 40K MVOLT **E14WC** DDBXD



# Multi-Volt (120V – 277V) Photocell Option



Photocell

Multi-volt (120-277V) button photocell option for dusk-to-dawn operation.

**Sample Nomenclature:**

WPX2 LED 40K MVOLT **PE** DDBXD



# Specification Sheet Ordering Tree

WPX LED				
Series & Lumen Output	Color Temperature	Voltage	Options	Finish
<b>WPX1 LED P1</b> <sup>1</sup> 1,550 Lumens, 11W	<b>30K</b> 3000K	<b>MVOLT</b> 120-277V	<b>(blank)</b> None	<b>DDBXD</b> Dark Bronze
<b>WPX1 LED P2</b> 2,900 Lumens, 24W	<b>40K</b> 4000K	<b>347</b> 347V <sup>3</sup>	<b>E4WH</b> Emergency battery backup, CEC compliant (4W, 0°C min) (available with WPX1 and WPX2) <sup>2</sup>	<b>DWHXD</b> White
<b>WPX2 LED</b> 6,000 Lumens, 47W	<b>50K</b> 5000K		<b>E14WC</b> Emergency battery backup, CEC compliant (14W, -20°C min) (available with WPX1 and WPX2) <sup>2</sup>	<b>DBLBXD</b> Black
<b>WPX3 LED</b> 9,200 Lumens, 69W			<b>PE</b> Photocell for dusk-to-dawn operation <sup>3</sup>	<i>Consult factory for other finish options</i>

Note: The lumen output and input power shown in the ordering tree are average representations of all coinfiguration options. Specific values are available upon request.

1. All WPX wall packs come with 6kV surge protection standard, except WPX1 LED P1 package which comes with 2.5kV surge protection standard. Add SPD6KV option to get WPX1 LED P1 with 6kV surge protection.
2. 347V and PE options not offered with any battery pack options. WPX3 is not available with any battery options.
3. Battery pack options not available with 347V and PE options.

# DLC Listing

- All MVOLT (120V-277V) configurations of WPX wall packs are DLC Premium listed, including:



- Any lumen package (WPX1 P1, WPX1 P2, WPX2, WPX3)
- Any color temperature (3000K, 4000K, 5000K)
- With or without photocell option
- With or without any emergency battery pack options
- Any color finish



- For **347V versions only**, the DLC listing status is shown below:
  - WPX1 (P1 and P2) are not DLC listed
  - WPX2 is DLC Standard
  - WPX3 is not DLC listed



# Stock Product List

Note: All products in stock are MVOLT (120V – 277V) and DDBXD (Dark Bronze)

	Lumen Output	Color Temp	Description	CI Code	UPC Code	Contractor Select?	In Stock?	
							California (WRDC) Illinois (MWDC) Georgia (SEDC)	Texas (SWDC) Pennsylvania (NEDC)
WPX1 P1	1,550	3000K	WPX1 LED P1 30K MVOLT DDBXD	*266CN3	00194994017684	-	Yes	-
		4000K	WPX1 LED P1 40K MVOLT DDBXD	*266CN9	00194994017714	-	Yes	Yes
		5000K	WPX1 LED P1 50K MVOLT DDBXD	*266CNC	00194994017929	-	Yes	Yes
WPX1 P2	2,900	3000K	WPX1 LED P2 30K MVOLT DDBXD	*265SWH	00193048870541	-	Yes	-
		4000K	WPX1 LED P2 40K MVOLT DDBXD	*265SWK	00193048870589	Yes	Yes	Yes
		5000K	WPX1 LED P2 50K MVOLT DDBXD	*265SWM	00193048870572	Yes	Yes	Yes
WPX2	6,000	3000K	WPX2 LED 30K MVOLT DDBXD	*265SX2	00193048870725		Yes	-
		4000K	WPX2 LED 40K MVOLT DDBXD	*265SX3	00193048870756	Yes	Yes	Yes
		5000K	WPX2 LED 50K MVOLT DDBXD	*265SX6	00193048870770	Yes	Yes	Yes
WPX3	9,200	3000K	WPX3 LED 30K MVOLT DDBXD	*265SX8	00193048870800	-	Yes	-
		4000K	WPX3 LED 40K MVOLT DDBXD	*265SX9	00193048870794	-	Yes	Yes
		5000K	WPX3 LED 50K MVOLT DDBXD	*265SXC	00193048870824	-	Yes	Yes



# Product Positioning

Specification

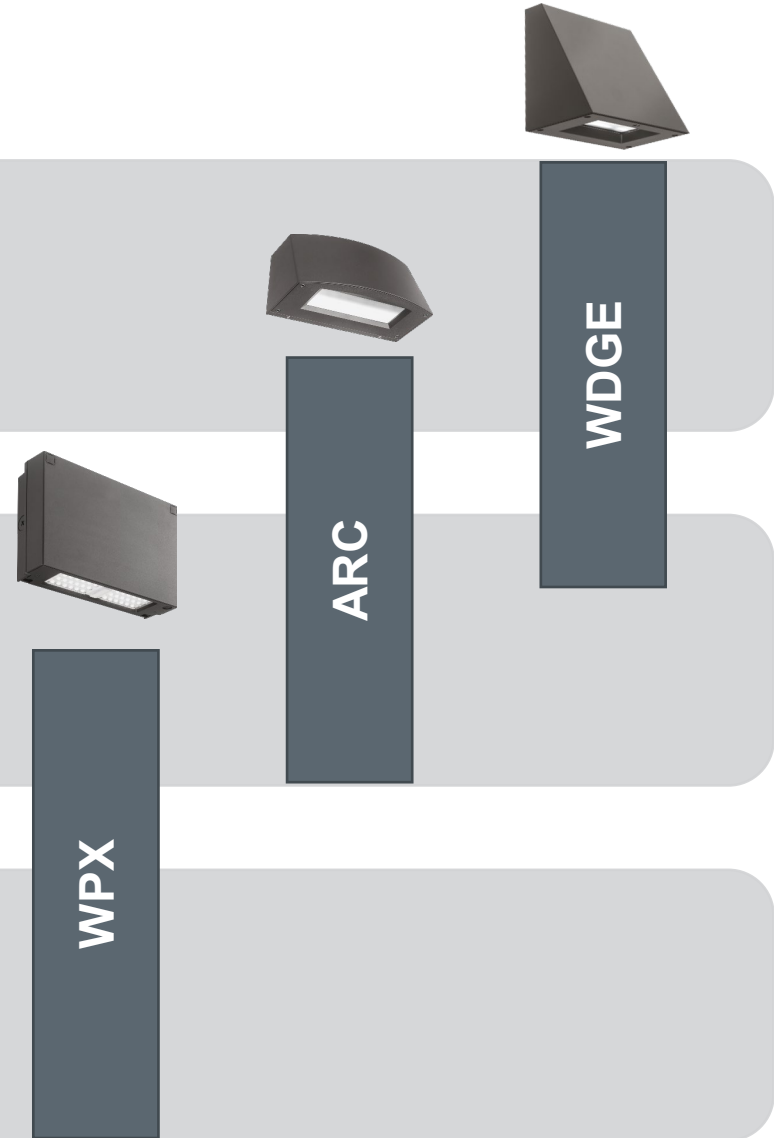
- Highly configurable
- Made to order
- 3-week delivery

Design/Build

- Value engineered
- Key product options
- Some stock options

Distributor Stock

- Always in stock
- Competitive price
- Key product options





# Product Positioning

	WPX	ARC	WDGE
Market Focus	Distributor Stock	Design/Build	Specification
Optical Approach	Refractive	Visual Comfort	Visual Comfort
Lumen Range	1,550 – 9,200	1,500 – 6,500	1,200 – 25,000
CRI	70	80	80 or 90
EM Option	Yes	Yes	Yes
Motion Sensor	No	No	Standard, nLight® AIR

# Beating Cooper and RAB:

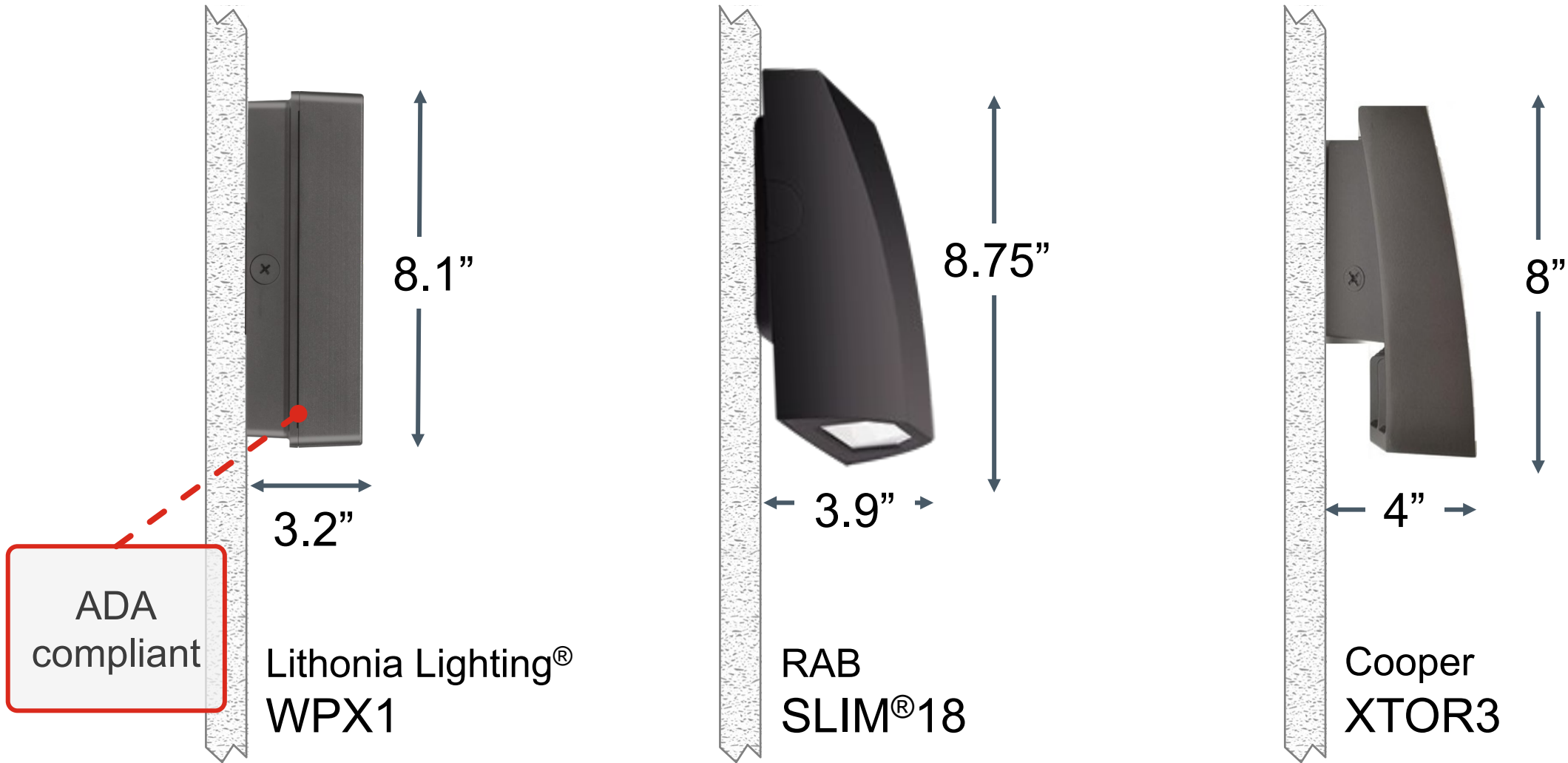


Attribute	Lithonia Lighting® WPX	Cooper XTOR	RAB SLIM® / WP
Optical Design	LED array and diffused lens deliver minimal glare and wide spacing	Bright chip-on-board LEDs create discomfort glare and short spacing	Bright chip-on-board LEDs create discomfort glare and short spacing
Aesthetic Design	Simple geometry blends into the architecture of the building	Unsightly fins	Inconsistent forms
Efficacy	Up to <b>136 LPW</b>	Up to 116 LPW	Up to 123 LPW
DLC Listing	Yes		

Note: Lithonia Lighting® WPX wall packs are DLC listed. Please check the DLC website for Premium and Standard listed versions.

Comparison data valid as of 07/08/2020 date. All trademarks referenced are property of their respective owners.

# Lower Profile for a Better Appearance



ADA compliant

Note : 3,000 lumen output luminaires shown in this comparison

Comparison data valid as of 07/08/2020 date. All trademarks referenced are property of their respective owners.



# Beating Cooper and RAB – Above-the-door Lighting



Attribute	Lithonia Lighting® WPX1 P1	Cooper XTOR1B	RAB SLIM12
Lumen Output	1,550	1,400	1,900
Input Power	11W	12W	16W
Efficacy (LPW)	136	116	123
Battery Option	4W (0°C) and 14W (-20°C)	No	No

# Beating Cooper and RAB – 150W HID Replacement



Attribute	Lithonia Lighting® WPX1 P2	Cooper XTOR3B	RAB SLIM18
Lumen Output	2,900	2,700	2,560
Input Power	24W	26W	21W
Efficacy (LPW)	121	104	122
Battery Option	4W (0°C) and 14W (-20°C)	No	No

# Beating Cooper and RAB – 250W HID Replacement



Attribute	Lithonia Lighting® WPX2	Cooper XTOR6B	RAB SLIM57
Lumen Output	6,000	6,000	6,200
Input Power	47W	58W	60W
Efficacy (LPW)	127	104	103
Battery Option	4W (0°C) and 14W (-20°C)	Yes (-20°C)	No

# Beating Cooper and RAB – 400W HID Replacement



Attribute	Lithonia Lighting® WPX3	Cooper XTOR8B	RAB LPACK
Lumen Output	9,250	8,400	10,000
Input Power	69W	81W	83W
Efficacy (LPW)	133	104	120



# Cooper CrossTour (XTOR) Crossover Matrix

Cooper XTOR		Lithonia Lighting® WPX	
Part Number	Lumen Output	Part Number	Lumen Output
XTOR1B	1,400	WPX1 LED P1	1,550
XTOR2B	2,100	WPX1 LED P2	2,900
XTOR3B	2,750		
XTOR4B	4,200	WPX2 LED	6,000
XTOR6B	6,100		
XTOR8B	8,500	WPX3 LED	9,200
XTOR12B	12,700		

Comparison data valid as of 07/08/2020 date. All trademarks referenced are property of their respective owners.





# RAB SLIM and LPACK Crossover Matrix

RAB SLIM <sup>®</sup> and WPLED		Lithonia Lighting <sup>®</sup> WPX	
Part Number	Lumen Output	Part Number	Lumen Output
SLIM12	1,400	WPX1 LED P1	1,550
SLIM18	1,900	WPX1 LED P2	2,900
SLIM26	2,600		
SLIM 37W	3,800	WPX2 LED	6,000
SLIM 57W	5,400		
SLIM 62W	6,200	WPX3 LED	9,200
LPACK 80W	10,000		

# Beating Hubbell Sling and LNC:



Attribute	Lithonia Lighting® WPX	Hubbell Sling	Hubbell LNC
Optical Design	LED array and diffused lens deliver minimal glare and wide spacing	Bright chip-on-board LEDs create discomfort glare and short spacing	LED arrays, but diffused lens is an added option
Aesthetic Design	Simple geometry blends into the architecture of the building	Unsightly fins	Dated look
Efficacy	Up to <b>136 LPW</b>	113 LPW	115 LPW



# Hubbell Sling Crossover Matrix

Hubbell Sling		Lithonia Lighting® WPX	
Part Number	Lumen Output	Part Number	Lumen Output
SG1-10	1,300	WPX1 LED P1	1,550
SG1-20	2,300	WPX1 LED P2	2,900
SG1-30	3,000		
SG1-40	4,000	WPX2 LED	6,000
SG2-50	5,500		
SG2-80	7,800	WPX3 LED	9,200

Comparison data valid as of 07/08/2020 date. All trademarks referenced are property of their respective owners.







# Hubbell LNC Crossover Matrix

Hubbell LNC		Lithonia Lighting® WPX	
Part Number	Lumen Output	Part Number	Lumen Output
LNC 5L	1,150	WPX1 LED P1	1,550
LNC 7L	1,500		
LNC 9L	2,000	WPX1 LED P2	2,900
LNC3 24L 035	3,000		
LNC3 24L 050	4,000	WPX2 LED	6,000
LNC3 24L 075	5,900		
LNC3 24L 105	7,600	WPX3 LED	9,200
LNC4	10,000 - 13,400		

Comparison data valid as of 07/08/2020 date. All trademarks referenced are property of their respective owners.





Thank You!