
INSTRUCTIONS IMPORTANT SAFEGUARDS

When using electrical equipment, basic safety precautions should always be followed including the following:

1. READ AND FOLLOW ALL SAFETY INSTRUCTIONS

2. Turn off power supply before attempting to install the unit.
3. Do not use outdoors.
4. Do not let power cords touch hot surfaces.
5. Do not mount near gas or electric heaters.
6. Equipment should be mounted in locations and at heights where unauthorized personnel will not readily subject it to tampering.
7. The use of accessory equipment not recommended by Beghelli USA, may cause an unsafe condition, and will void the unit's warranty.
8. Do not use this equipment for other than its intended purpose.
9. Qualified service personnel should perform servicing of this equipment.
10. Consult building code for approved wiring and installation.
11. The fixture must be grounded to avoid potential electric shock.

12. SAVE THESE INSTRUCTIONS!

INSTALLATION

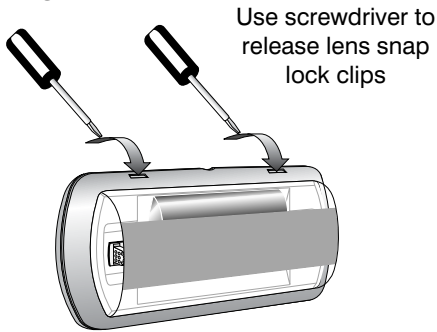
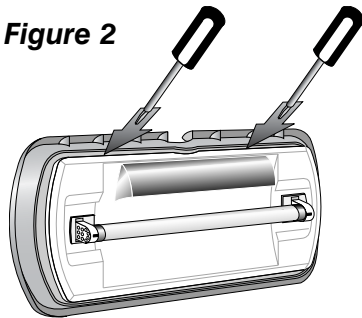
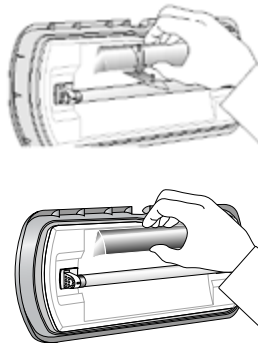
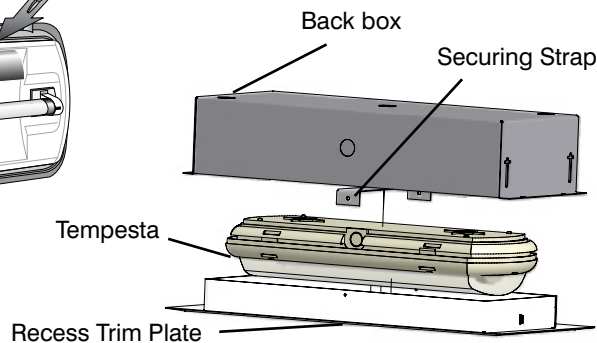
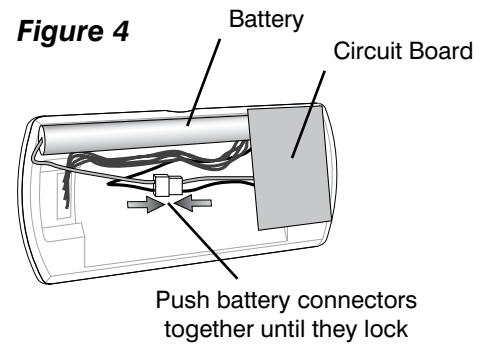
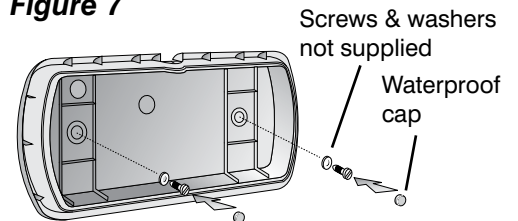
1. Extend unswitched 24 hour AC supply of rated voltage to an electrical junction box (supplied by others) installed in accordance with all applicable codes and standards.
2. Extend wiring from the junction box to the location where the unit will be installed. Leave at least 8 inches of slack wire at the end of the circuit. This circuit should NOT be energized/live at this time.
3. Remove the lens by placing an appropriate sized flat head screw driver into the snap lock clips and pushing the clips slightly in and down until they release the lens. This must be completed to each of the four clips (Figure 1).
4. Pull the lens away from the unit. The internal reflector and chassis can now be removed by placing the screw driver into the reflector locking channels and twisting slightly until the clip releases. This must be completed to each of the four mounting channels (Figure 2). For recessed installation see (Figure 6).
5. Pull the reflector and chassis away from the back plate to access the electronics mounted on the back.
6. Wall or ceiling installation can be completed by installing screws and washers (supplied by others) with a water proof cap through the back of the fixture housing (Figure 7).
7. Complete the battery connection by locking the plastic battery connectors together (Figure 4). The lamp may turn on once the connection is completed, depending on the charge level of the battery.
8. Secure the wires in place and ensure that the AC supply wires have been routed out to the steel electrical box mounted on the back of the unit.
9. Make the appropriate AC voltage connection (Figure 10)
10. Control of the light output can be achieved with the supplied reflecting "spoiler" (Figure 8) and for ceiling applications or where light control is not required the reflecting "spoiler" can be removed (Figure 9).
11. RE-align the reflector with the back plate and push together until each locking clip engages.
12. Align the lens with the unit and push in back into place until each lens snap lock clip engages.
13. When the unit is reassembled turn on AC voltage supply.

MAINTENANCE

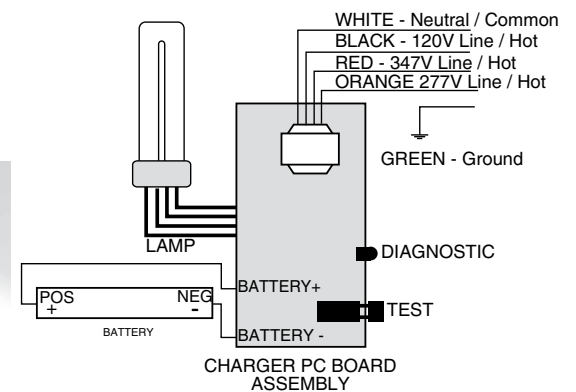
1. The equipment is to be repaired whenever the equipment fails to operate as intended during the duration test. Written records of test results and any repairs made must be maintained. Beghelli Inc. strongly recommends compliance with all Code requirements.
2. Clean lenses on a regular basis.

NOTE: The servicing of any parts should be performed by qualified service personnel only. The use of replacement parts not furnished by Beghelli USA, may cause equipment failure and will void the warranty.

The lamps listed herein when used according to the instructions with this unit are in accordance with the requirements of CSA Standard C22.2, No. 141 – Unit Equipment for Emergency Lighting.

Figure 1**Figure 2****Figure 3****Figure 6****Figure 9****Figure 4****Figure 7****Figure 10**

TEMPESTA CHARGER BOARD
AUTOTEST DUAL INPUT VERSION

**Figure 8**

TROUBLESHOOTING

LAMP DOES NOT COME ON AT ALL

Pilot Light is out before test...

1. Check AC supply - be sure unit has 24 hour AC supply (unswitched).
2. AC supply is OK, and indicator light is out, replace PC Board Assembly.

Pilot Light is on before test

3. Either the output is shorted or overloaded, or the battery is not connected.
4. Battery is severely discharged. Allow 48 hours for recharge and then retest. NOTE: This could be the result of a switched AC supply to the unit (which has been turned off at some point), a battery with a shorted cell, an old battery or a battery which has been discharged due to a long power outage and is not yet fully recharged.

LAMP COMES ON DIM WHEN TEST BUTTON IS PRESSED

1. Battery discharged - permit unit to charge for 48 hours and then retest. If lamps are still dim, check charger for proper function. If charger functions correctly, replace battery.

LAMP COMES ON DIM WHEN AC POWER IS ON -

1. Check supply voltage and AC connections. This emergency light is provided with brownout protection. The AC supply must be at least 80% of nominal (96V on a 120V line) for equipment to function normally. At lower voltages the lamp will begin to glow dimly until the source voltage drops below the full "turn-on" point. NOTE: This condition may also be caused by incorrectly connecting the voltage supply line to the wrong voltage transformer lead.

SAVE THESE INSTRUCTIONS