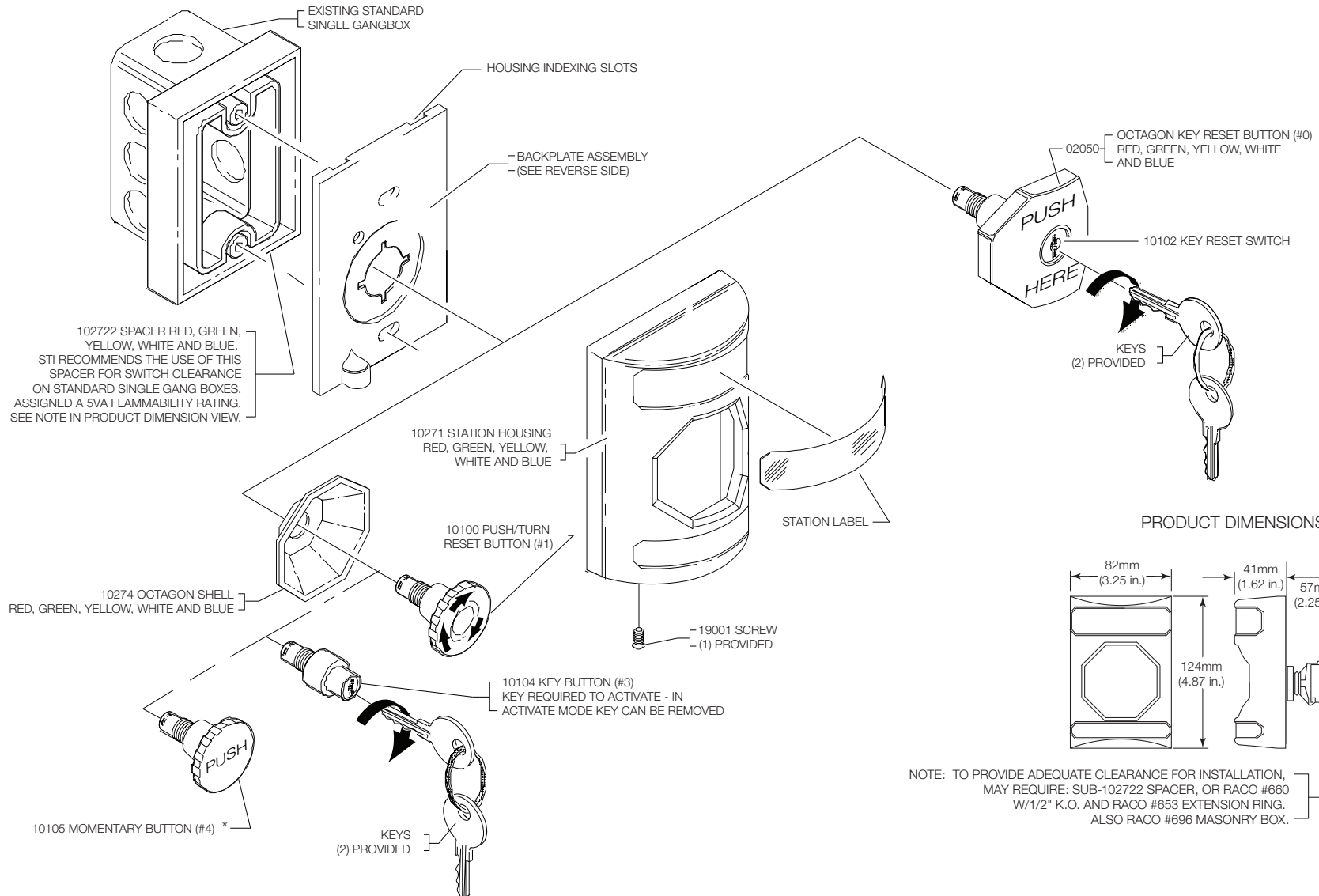




# Safety Technology International

European Office  
Taylor House • 34 Sherwood Road • Bromsgrove  
Worcestershire • B60 3DR • England  
Tel: 44 (0) 1527 520 999 Fax: 44 (0) 1527 501 999  
E-mail: info@sti-emea.com • Web: www.sti-emea.com

USA - Headquarters  
2306 Airport Road • Waterford, Michigan 48327-1209  
Phone: 248-673-9898 • Fax: 248-673-1246  
Toll Free: 800-888-4784 • E-mail: info@sti-usa.com  
Web: www.sti-usa.com



\*SS-2\*\*4 and LT1 NOTES: For access control installations, power for the LT-1UL Timer must be supplied by a power source listed to UL294. When used for access control, this device shall be used as part of an access controlled egress door system. It is up to the local AHJ to allow use of this device in place of an automatic sensor. For higher security installations, lower time limits should be used. For SS-2\*\*4 and LT1-UL the enclosed timer is to be used and installed per the enclosed LT-1UL installation sheet. SS-2\*\*4 and LT1-UL maximum rating 30 VDC 3A.

## INSTALLATION OF SS-2xx1, 2xx3 and 2xx4 SERIES STOPPER®STATION

All specifications and information shown were current as of publication, and are subject to change without notice

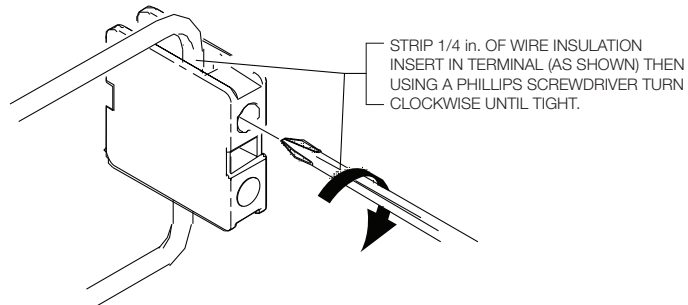




# Safety Technology International

European Office  
 Taylor House • 34 Sherwood Road • Bromsgrove  
 Worcestershire • B60 3DR • England  
 Tel: 44 (0) 1527 520 999 Fax: 44 (0) 1527 501 999  
 E-mail: info@sti-emea.com • Web: www.sti-emea.com

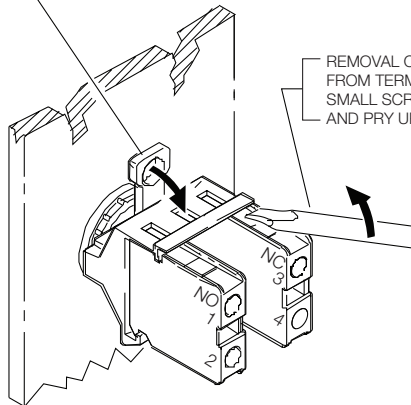
USA - Headquarters  
 2306 Airport Road • Waterford, Michigan 48327-1209  
 Phone: 248-673-9898 • Fax: 248-673-1246  
 Toll Free: 800-888-4784 • E-mail: info@sti-usa.com  
 Web: www.sti-usa.com



STRIP 1/4 in. OF WIRE INSULATION  
 INSERT IN TERMINAL (AS SHOWN)  
 THEN USING A PHILLIPS SCREWDRIVER TURN  
 CLOCKWISE UNTIL TIGHT.

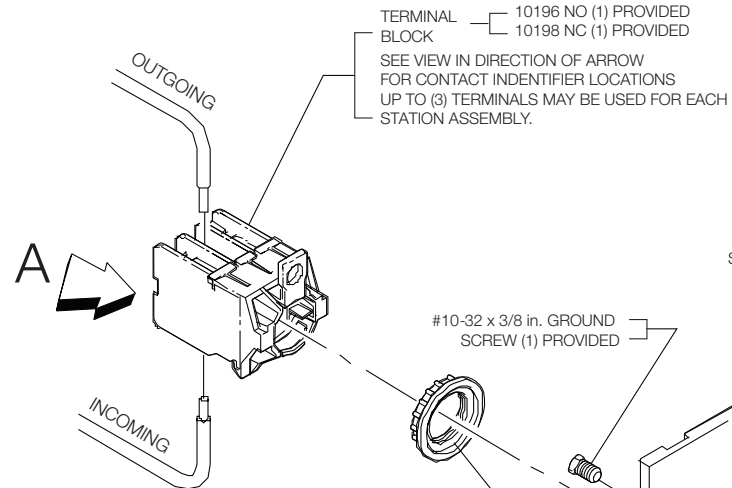
VIEW IN DIRECTION OF ARROW  
 INSTALLATION OF ELECTRICAL  
 WIRE INTO TERMINAL BLOCK

SEPARATION OF TERMINAL ASSEMBLY  
 FROM BUTTON ASSEMBLY IS AS FOLLOWS:  
 GRASP TERMINAL HOUSING AND USING THUMB  
 APPLY PRESSURE DOWNWARD, REMOVE TERMINAL.



REMOVAL OF TERMINAL BLOCK  
 FROM TERMINAL HOUSING: INSERT  
 SMALL SCREWDRIVER (AS SHOWN)  
 AND PRY UPWARD, REMOVE TERMINAL.

VIEW IN DIRECTION OF ARROW  
 INSTALLATION AND REMOVAL OF TERMINAL BLOCKS AND  
 TERMINAL BLOCK ASSEMBLY FROM BUTTON ASSEMBLY

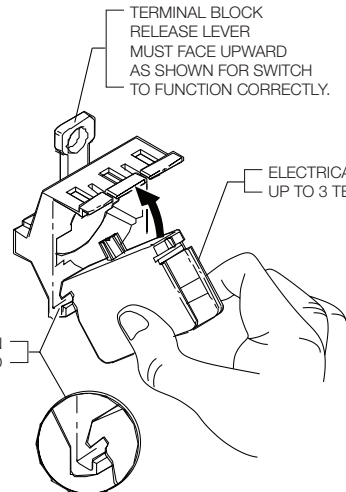


TERMINAL BLOCK — 10196 NO (1) PROVIDED  
 10198 NC (1) PROVIDED  
 SEE VIEW IN DIRECTION OF ARROW  
 FOR CONTACT IDENTIFIER LOCATIONS  
 UP TO (3) TERMINALS MAY BE USED FOR EACH  
 STATION ASSEMBLY.

#10-32 x 3/8 in. GROUND  
 SCREW (1) PROVIDED

BUTTON LOCK NUT

SCREWS #6-32 x 1  
 OUTLET BOX (2) PROVIDED.  
 SCREWS #6-32 x 1.50 WHEN  
 USING 102722 SPACER  
 (SEE REVERSE SIDE).



TERMINAL BLOCK  
 RELEASE LEVER  
 MUST FACE UPWARD  
 AS SHOWN FOR SWITCH  
 TO FUNCTION CORRECTLY.

ELECTRICAL TERMINAL BLOCK  
 UP TO 3 TERMINALS MAY BE USED

INSERT NOTCH, AS SHOWN  
 THEN ROTATE UPWARD

10272 BACKPLATE  
 GREEN, YELLOW, WHITE AND BLUE

### TERMINAL BLOCK LEGEND

NO — NORMALLY OPEN  
 NC — NORMALLY CLOSED  
 C — COMMON

### ALL TERMINALS ACCEPT TWO 12 TO 18 (AWG)

VOLTAGE	RATED AVERAGE CURRENT
250 VDC	1 AMP
600 VAC	3 AMP

NOTE: SS-2XX4/LT CONTACTS ON FORM C TIMER RATED: 120 VAC, 3A  
 28 VDC, 3A

## INSTALLATION OF SS-2xx1, 2xx3 and 2xx4 SERIES STOPPER®STATION

All specifications and information shown were current as of publication, and are subject to change without notice