

PRIMEX

MDE Installation Instructions

PRODUCT
MODEL CODE

Verge MDE

P2100, P3000, P4200, P6300

The Primex Verge WiFi transparent Media Distribution Enclosures for structured wiring bring reliability when managing today's inside cable system requirements. Its flexible design provides a convenient, lockable and centralized location for easy installation and distribution of multi-play services within residential and commercial premises.



WARNING

- **DO NOT** stretch enclosure walls or lid won't seat properly.
- **DO NOT** overtighten mounting screws.
- **DO NOT** use mounting screws larger than #8.

Note: Adhere to your local electrical code when installing all cabling.

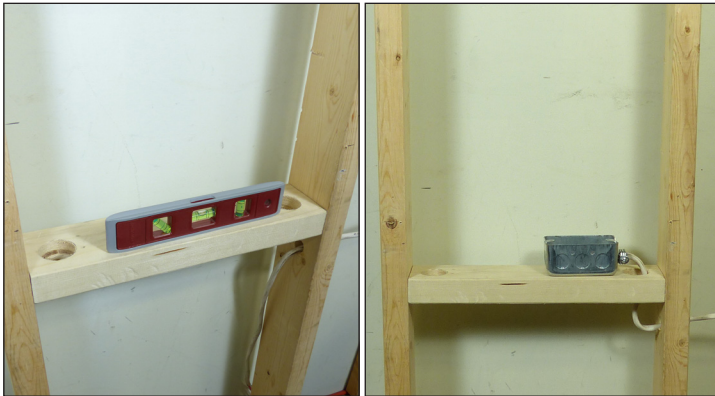
P3000 STANDARD FRAME & LID INSTALLATION

STEP 1

Install horizontal joist and gang box

To ensure a comfortable working height it is recommended that the top of the gang box be installed 36" from the ground using a level.

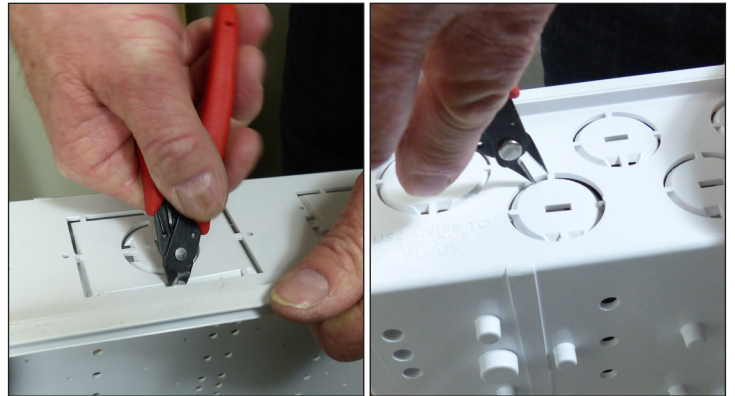
Note: Leave at least a 2" buffer zone around base to keep clear from perpendicular walls.



STEP 2

Remove knock outs

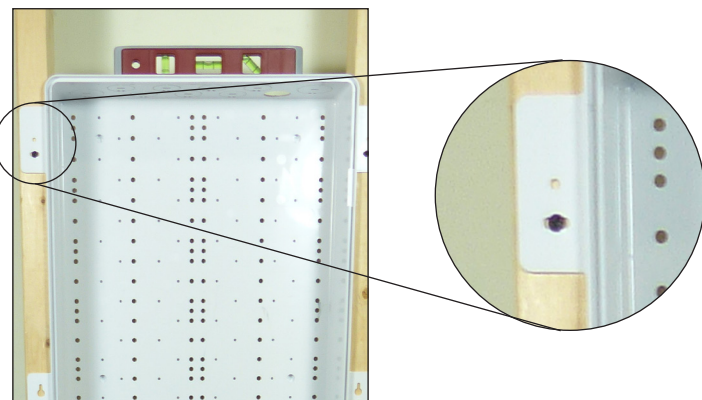
Prior to installation, remove the knockouts for the conduit and electrical box using a flush cutter tool.



STEP 3

Install base over top of the gang box using No. 8 flat head screws

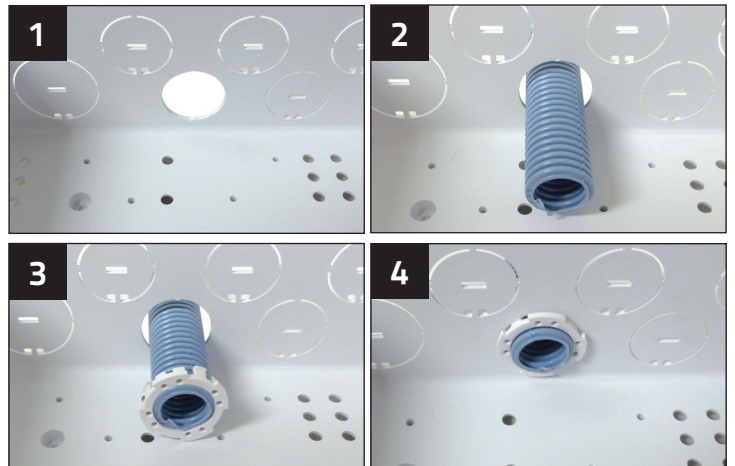
Install single screw in corner flange, level, then secure with additional screws.



STEP 4

Connect power and install electrical outlet faceplate

At this stage, connect conduit for outgoing and incoming services and secure with Primex conduit adapters.



FOR MORE INFORMATION CONTACT:

📞 1.604.881.7875 📠 1.604.881.7835

www.primexfits.com

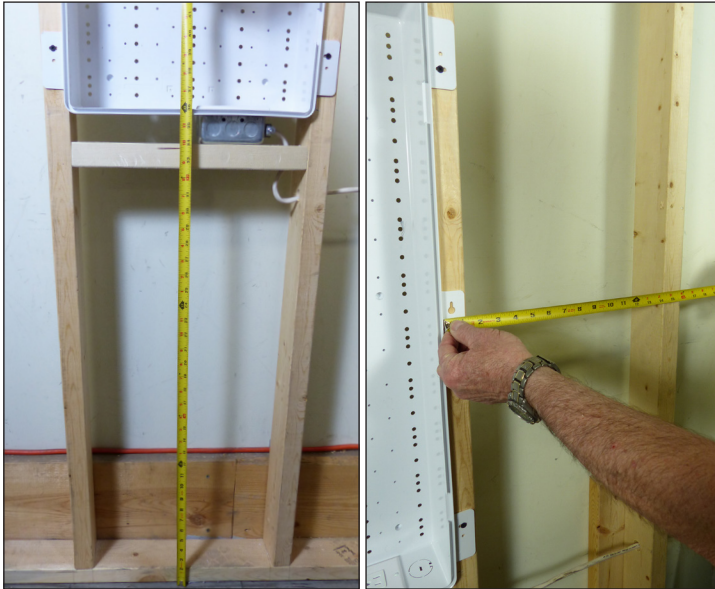


primex  Fit everything. Together.

STEP 5

Measure installation position

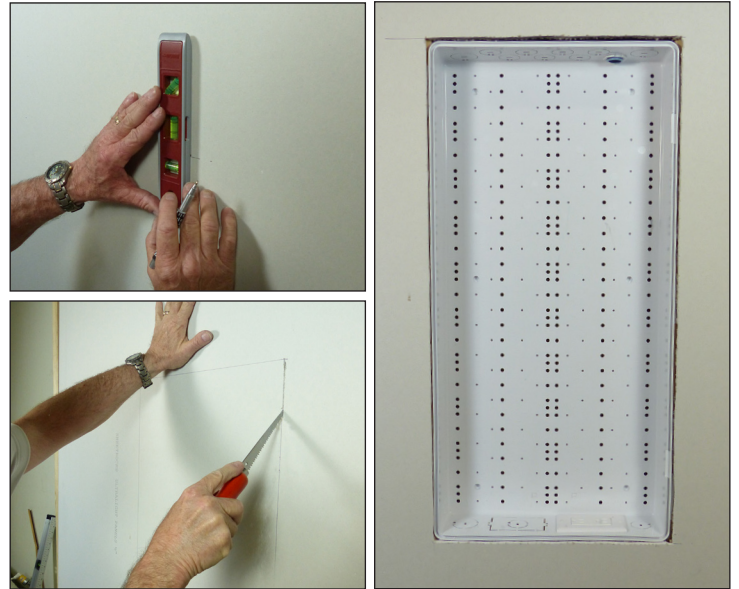
Measure distances from edges of enclosure to outside of adjacent studs, floor and ceiling.



STEP 6

Measure, mark, cut and mount drywall

Use measurements from step 5 to mark out drywall. Cut out marked area of drywall. Fit drywall over top of the installed enclosure base and secure.



STEP 7

Paint and affix lid

Place paintshield, paint drywall, and install lid and frame sub-assembly.



STEP 8

Finish installation

Remove paintshield, install locks (optional), and install telecom components (modem, ONT, UPS, eg.).



FOR MORE INFORMATION CONTACT:

📞 1.604.881.7875 📠 1.604.881.7835

www.primexfits.com



primex  Fit everything. Together.

PRIMEX MDE Accessory Installation Instructions

PRODUCT
MODEL CODE

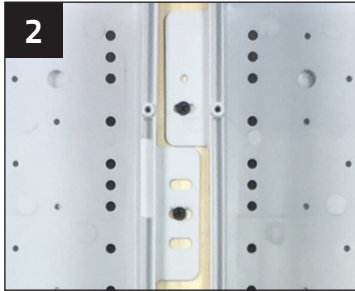
Verge MDE
P2100, P3000, P4200, P6300

P3000N Narrow Frame & Lid

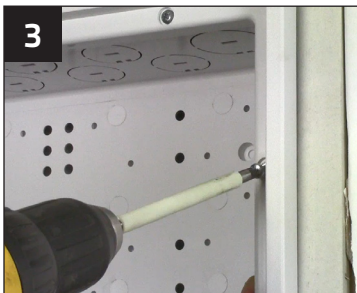
(P/N: 125-1265)



1 Place enclosures between studs side-by-side.



2 Offset tabs allow for shared stud mounting.



3 Install frame and lid using the provided No.8 screws.

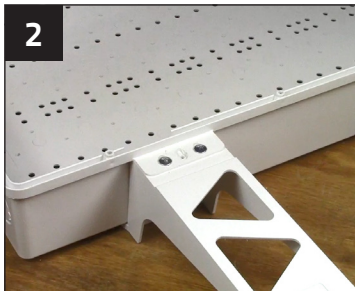


4 Install locks if needed and secure enclosures.

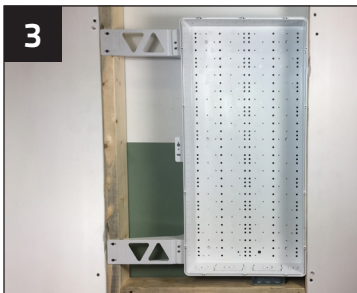
24in Stud Bracket for P3000



1 Attach the bracket at the back using the screws provided.



2 Use an additional screw at the front for added support.



3 Attach brackets at the top and bottom of the enclosure.



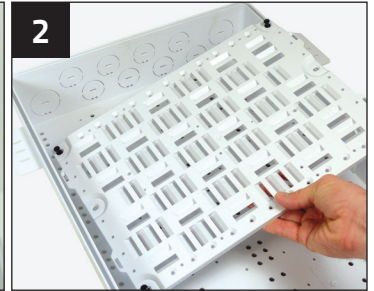
4 Complete the installation of the P3000.

Universal Mounting System (UMS)

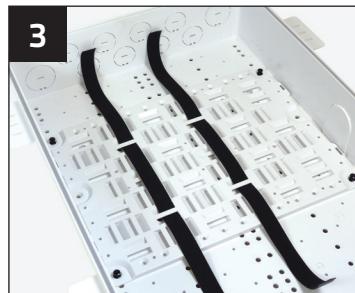
*Recommended load
5lbs (2.27kg)



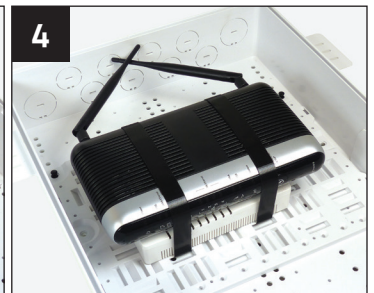
1 Pre-insert up to six pushpins into UMP before placement.



2 Determine placement of UMS and depress pushpins to lock in place.



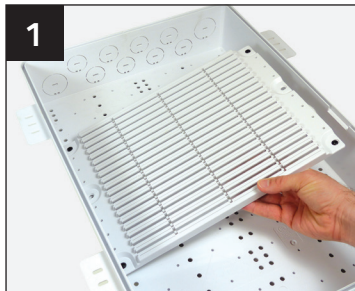
3 Determine placement location of component, cut tape, and thread.



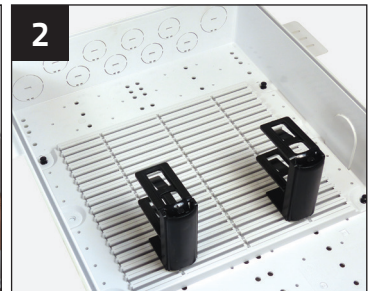
4 Pull tape and affix to hold and ensure component is secure.

Rail Mounting System (RMS)

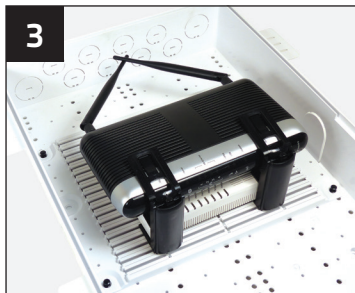
*Max mounted component
thickness of 3.3"



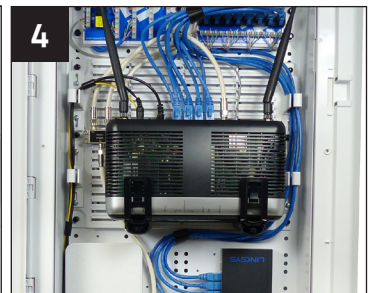
1 Determine placement of RMS and press pushpins to lock in place.



2 Slide brackets into place from the side of the mounting plate.



3 Place component and press bracket arm to hold securely.



4 Recommended load 5lbs (2.27kg)
Place in heavier equipment first.

FOR MORE INFORMATION CONTACT:

📞 1.604.881.7875 📠 1.604.881.7835

www.primexfits.com







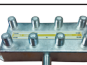






primex  Fit everything. Together.

PRIMEX MDE Accessories

PRODUCT
MODEL CODE

Verge MDE
P2100, P3000, P4200, P6300

Product	Description	Stock Code
	White ABS Universal Mounting Plate	125-0770
	33' Roll Of Mounting Tape	125-0779
	Mounting Plate Pushpins (100/bag)	125-0829
	Rail Mounting Plate (7") (RMP)	125-1164
	Rail Mounting Plate (10") (RMP)	125-1165
	6 Pack, Rail Mount Bracket Kit (RMB)	125-1213
	6 Pack, Dual Rail Mount Bracket Kit (RMB-2)	125-1214
	Rail Mount Keyhole Kit (RMK)	125-1338
	8-Port Cat5e Data Module	125-0986
	8-Port Cat6 Data Module	125-1035
	8-Port Voice RJ31x Module	125-0987
	8-Port Coax Splitter, 1GHz	125-1046
	8-Port Coax Splitter, 3GHz	125-1250
	Electrical Installation Kit	125-1355
	Electrical Installation Kit - Surge Protection	125-1367
	Electrical Installation Kit - GFCI	125-1379
	3/4"-1/2" Reducer	125-1022
	1"-3/4" Reducer	125-0936
	Hinged Fiber Spool 3" ABS - Short Legs	125-0932
	Fiber Spool 3" ABS - Short Legs	125-0933
	Hinged Fiber Spool 3" ABS - Long Legs	125-0931
	Fiber Spool 3" ABS - Long Legs	125-0934
	White ABS Hurricane Clip	125-0239
	White ABS 24" Stud Bracket	125-1272
	F-Connector 3GHz Keystone	125-0961

Product	Description	Stock Code
	Fiber Transition Case (FTC)-White ABS w/ Screw Cap	125-0945
	Fiber Transition Case (FTC)-White ABS w/ Single SC/APC Adapter	125-0873
	Fiber Transition Case (FTC)-White, w/ext. Adapter Mount	125-0849
	Fiber Transition Outlet (FTO)-w/2 SC/APC Adapter	125-0885
	Fiber Transition Outlet (FTO)-w/1 SC/APC Adapter	125-0889
	Fiber Transition Outlet (FTO)-w/Integrated Splice Tray	125-0879
	SC/APC Keystone w/Shutter	125-0908
	Cat5e, 110 IDC, 90° HD	125-0949-WT
	Cat5e, 110 IDC, 180° HD	125-0948-WT
	Cat6, 110 IDC, 90° HD	125-0947-WT
	Cat6, 110 IDC, 180° HD	125-0946-WT
	3-Line RJ12 Voice Jack	125-0959-WT
	Surface Mount Box, 1-Port	125-0962-WT
	Surface Mount Box, 2-Port	125-0963-WT
	Customer Premise Outlet (CPO4), 4-Port	125-0911
	Single-Gang Wall Plate, 1-Port	125-0957-WT
	Single-Gang Wall Plate, 2-Port	125-0958-WT
	Single-Gang Wall Plate, 3-Port	125-0955-WT
	Single-Gang Wall Plate, 4-Port	125-0956-WT
	Decorative Wall Jack, 1-Port	125-0951-WT
	Decorative Wall Jack, 1-Port	125-0952-WT
	Decorative Wall Jack, 1-Port	125-0953-WT
	Decorative Wall Jack, 1-Port	125-0954-WT
	Decorative Wall Plate	125-0950-WT
	Oversize Wall Plate, 1-Port, Glossy	125-1241-WT
	Oversize Wall Plate, 2-Port, Glossy	125-1236-WT
	Oversize Wall Plate, 3-Port, Glossy	125-1242-WT
	Oversize Wall Plate, 4-Port, Glossy	125-1243-WT
	Oversize Wall Plate, 6-Port, Glossy	125-1244-WT
	Oversize Wall Plate, 2-Port, W/Cat6 & Coax, Glossy	125-1288-WT
	Oversize Wall Plate, 2-Port, W/Cat6 & Coax, Textured	125-1237-WT

FOR MORE INFORMATION CONTACT:

📞 1.604.881.7875 📠 1.604.881.7835

www.primexfits.com



primex  Fit everything. Together.