

Important

- § **READ and FOLLOW ALL SAFETY INSTRUCTIONS.**
- § **When using electrical equipment, safety precautions should always be observed.**
- § **NO POWER TOOLS ARE TO BE USED FOR ASSEMBLING.**
- § **The screws have NYLOK anti-loosening coating; use a screwdriver that has sufficient torque to tighten the screws.**
- § **The trim screws must be tightened firmly to ensure good thermal contact.**
- § **Do not over torque the screw to prevent stripping the threads.**

Installation

Step 1 Turn off or disconnect the electrical power.

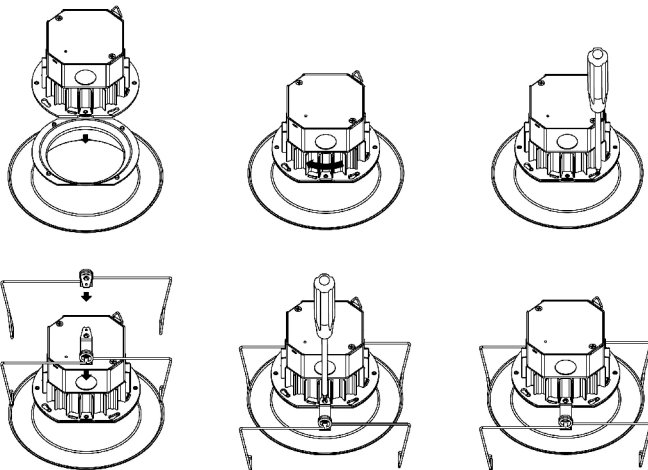
Step 2 Ensure that the Product's input voltage matches or is compatible with the line voltage. Check the voltage rating on the Product Bar Code label. The Product only accepts 1 Φ (single phase) electricity.

enLux Lighting is not responsible or liable for incorrect power connection.



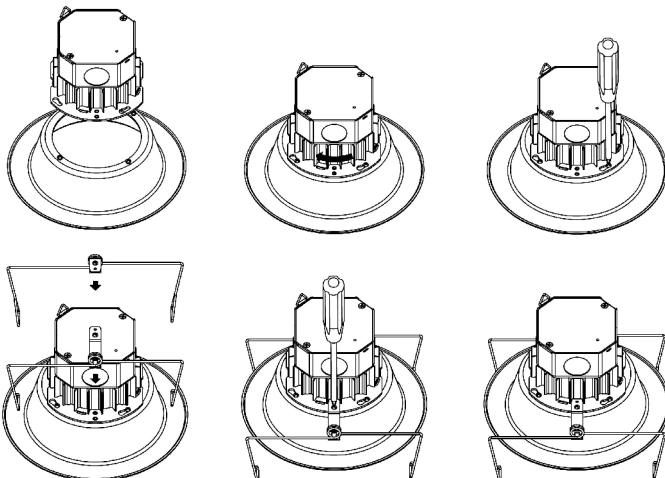
Step 3 Assemble LED light module to the trim, then install the M-spring on to the Flat Side of the Heatsink.

DL1e-TC5

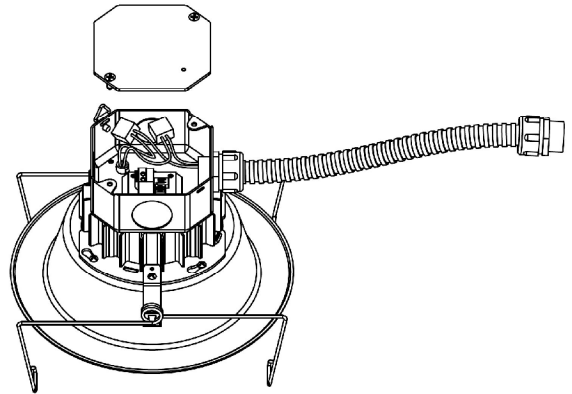


Step 3 Assemble LED light module to the trim, then install the M-spring on to the Round Side of the Heatsink.

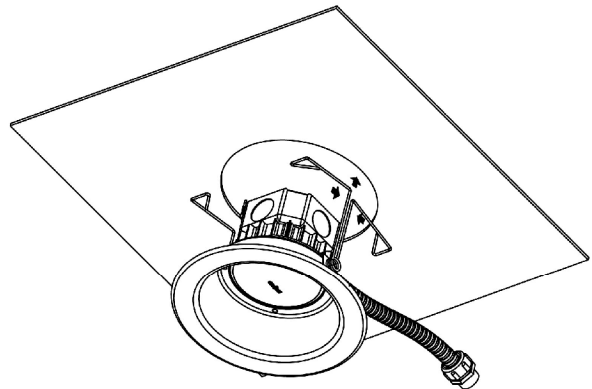
DL1e-TC6/8/9



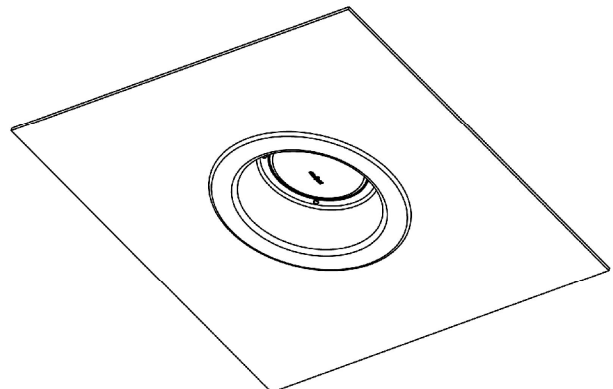
Step 4 Make electric wire connections in the junction box.



Step 5 Snap the M-Springs in the ceiling panel.



Step 6 Installation is completed.



Important

- § **READ and FOLLOW ALL SAFETY INSTRUCTIONS.**
- § **When using electrical equipment, safety precautions should always be observed.**
- § **NO POWER TOOLS ARE TO BE USED FOR ASSEMBLING.**
- § **The screws have NYLOK anti-loosening coating; use a screwdriver that has sufficient torque to tighten the screws.**
- § **The trim screws must be tightened firmly to ensure good thermal contact.**
- § **Do not over torque the screw to prevent stripping the threads.**

Installation

Step 1 Turn off or disconnect the electrical power.

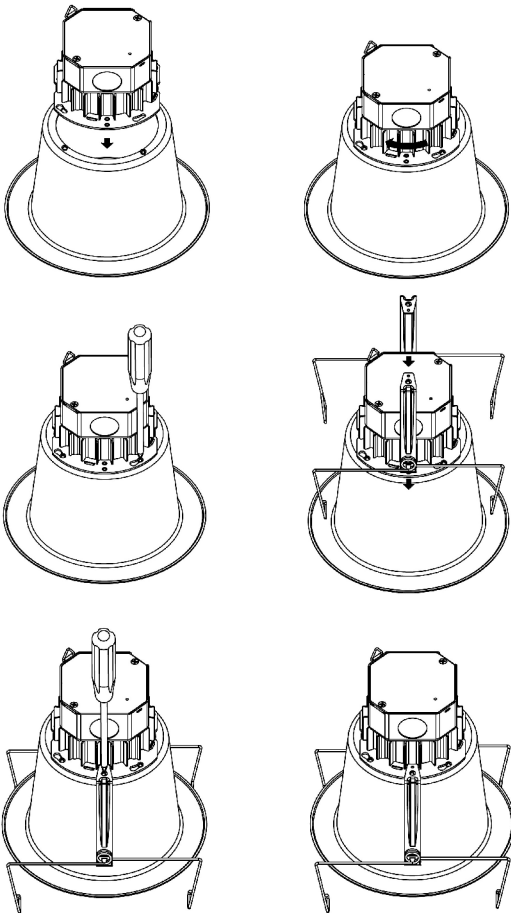
Step 2 Ensure that the Product's input voltage matches or is compatible with the line voltage. Check the voltage rating on the Product Bar Code label. The Product only accepts 1 Φ (single phase) electricity.

enLux Lighting is not responsible or liable for incorrect power connection.

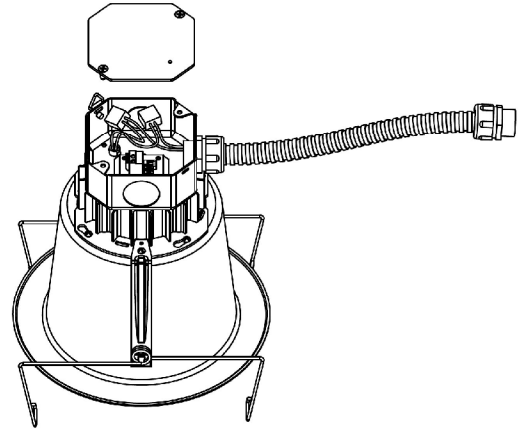


Step 3 Assemble LED light module to the trim, then install the torsion springs on to the **Flat Side** of the heat sink.

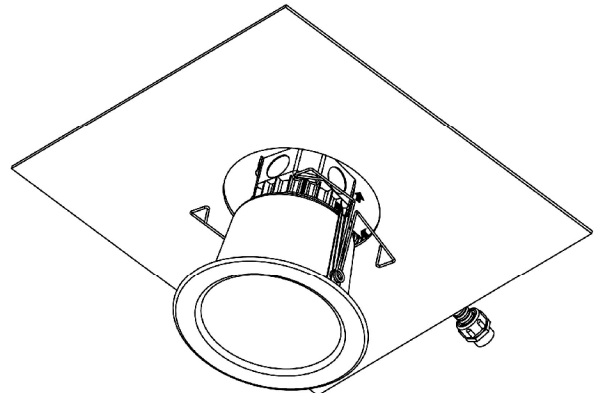
DL1e-DC6/8



Step 4 Make electric wire connections in the junction box.



Step 5 Snap the M-Springs in the ceiling panel.



Step 6 Installation is completed.

