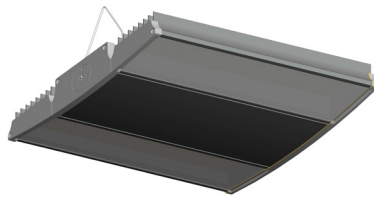


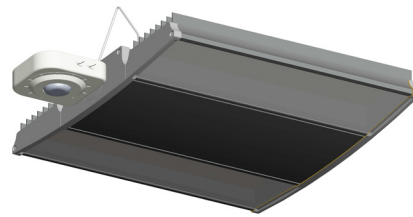
# HIGHBAY RAIL™ INSTALLATION INSTRUCTIONS

**RAB**  
LIGHTING

Thank you for buying RAB lighting fixtures. Our goal is to design the best quality products to get the job done right. We'd like to hear your comments. Call the Marketing Department at 888-RAB-1000 or email: [marketing@rabweb.com](mailto:marketing@rabweb.com)



RAIL



RAIL with LOSBAY800

## IMPORTANT

**READ CAREFULLY BEFORE INSTALLING FIXTURE. RETAIN THESE INSTRUCTIONS FOR FUTURE REFERENCE.**

Fixtures must be wired in accordance with the National Electrical Code and all applicable local codes. Proper grounding is required for safety. THIS PRODUCT MUST BE INSTALLED IN ACCORDANCE WITH THE APPLICABLE INSTALLATION CODE BY A PERSON FAMILIAR WITH THE CONSTRUCTION AND OPERATION OF THE PRODUCT AND THE HAZARDS INVOLVED.

**WARNING: Make certain power is OFF before installing or maintaining fixture. No user serviceable parts inside.**

## MOUNTING FIXTURE TO CEILING

Mount **Housing** to sturdy ceiling structure as follows:

1. **V Hooks (2)** are provided for chain mounting. Secure **V Hooks** through **Bracket Hole** at back of **Housing** as in **Fig. 1**.
2. Connect to two (2) equal lengths of chain (by others) and/or appropriate hardware (by others) suitable for mounting surface, to suspend **Housing** from **V Hooks**.
3. Fixture mounting height and spacing should be determined by application requirements. Use chain suitable to support four (4) times the weight of the fixture.
4. **Brackets (2)** should be positioned near end of **Housing** as shown in **Fig.2**. Secure **Housing** to ceiling mounting surface and adjust **Brackets** evenly to ensure **Housing** is stabilized.
5. If ordered with **LOS800** sensor (suffix /LOS) or similar sensor or LightCloud™ controller, re-attach pre-wired sensor on **Side Cap** to **Housing**. Sensor can be disconnected with supplied quick disconnect connector. Tighten **Side Cap Screw** as shown in **Fig. 3**.
6. Remove **Access Plate** and feed supply wire with strain relief conduit connector through **Access Plate** and make electrical connections as shown in wiring diagram. Use approved wiring connectors and wire to local NEC codes. Push all wires back into **Housing**. Be careful not to pinch wires.
7. Secure **Access Plate** and tighten **Screws (2)**.

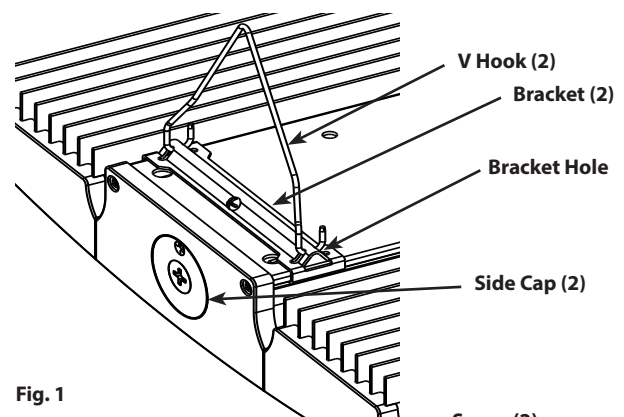


Fig. 1

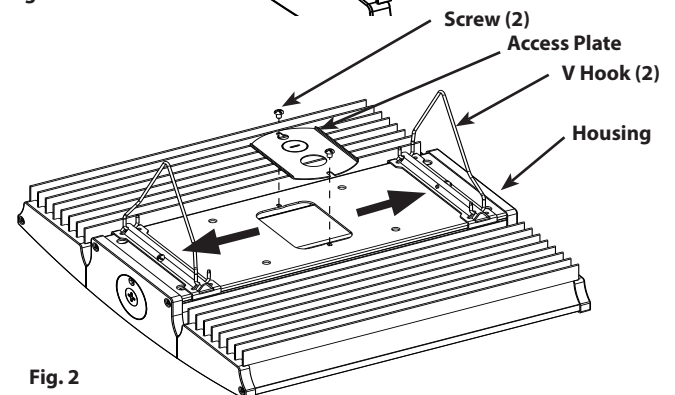


Fig. 2

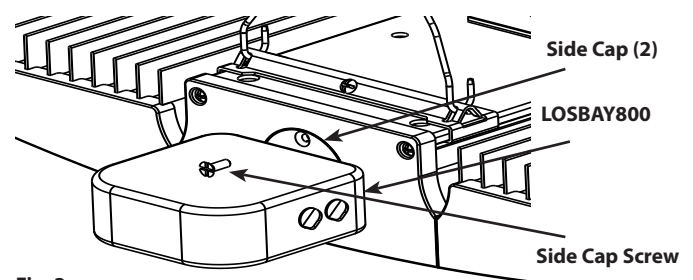


Fig. 3

# HIGHBAY RAIL™ INSTALLATION INSTRUCTIONS



Thank you for buying RAB lighting fixtures. Our goal is to design the best quality products to get the job done right. We'd like to hear your comments. Call the Marketing Department at 888-RAB-1000 or email: [marketing@rabweb.com](mailto:marketing@rabweb.com)

## 0-10V DIMMABLE WIRING

Universal voltage driver permits operation at 120V thru 277V, 50 or 60 Hz. Sensor (ordered separately) can be disconnected with supplied quick disconnect connector. Units ordered with (/480/D10) suffix are 480V, 50Hz or 60Hz. For 0-10V Dimming, follow the wiring directions as in Fig. 4.

1. Connect the black fixture lead to the LINE supply lead.
2. Connect the white fixture lead to the COMMON supply lead.
3. Connect the GROUND wire from fixture to supply ground.
4. Connect the purple fixture lead to the (V+) DIM lead.
5. Connect the gray fixture lead to the (V-) DIM lead.
6. Cap the yellow fixture lead, if present. Do NOT connect.

NOTE: Do not connect DIM V+ (purple)/ DIM V- (gray) to line voltage or supply ground.

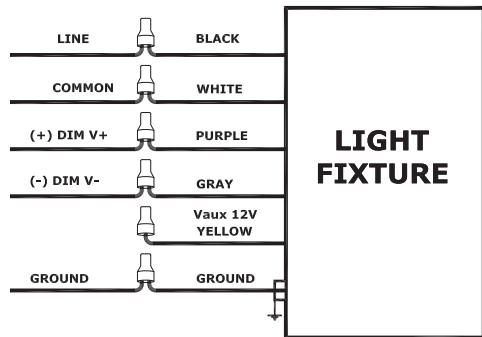


Fig. 4

## BILEVEL DIMMER OPTION

For 100% light output (disabling the dimmer), splice red wire with black line wire.

For chosen output only, leave red wire capped.

For Bilevel Function, connect red wire to switched device.

1. Determine what % light output is desired and set switch prior to installation.  
Options are: 25%, 50%, and 75%.
2. Connect purple wire with driver's purple wire.
3. Connect gray wire with driver's gray wire.
4. Connect black wire with driver and supply line wires.
5. Connect white wire with driver and supply neutral wires.

## CLEANING & MAINTENANCE

**CAUTION: Be sure fixture temperature is cool enough to touch. Do not clean or maintain while fixture is energized.**

1. Lens should be washed in a solution of warm water and any mild, non abrasive household detergent, rinsed with clean water and wiped dry. Do not use chemicals to clean fixture.
2. Do not open fixture to clean the LED. Do not touch the LED.

## TROUBLESHOOTING

1. Check that the line voltage at fixture is correct. Refer to wiring directions.
2. Be sure the fixture is grounded properly.

PATENT - US: Patent D761,477

*Note: These instructions do not cover all details or variations in equipment nor do they provide for every possible situation during installation, operation or maintenance.*



### Easy Answers

[rabweb.com](http://rabweb.com)  
Visit our website for product info

Tech Help Line  
Call our experts - 888 722-1000

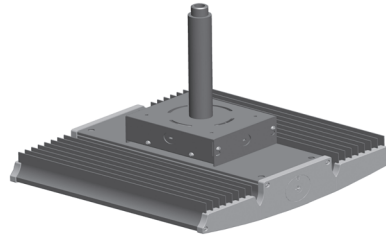
e-mail  
Answered promptly - [sales@rabweb.com](mailto:sales@rabweb.com)

Free Lighting Layouts  
Answered online or by request

# HIGHBAY RAIL™ PENDANT INSTALLATION INSTRUCTIONS

**RAB**  
LIGHTING

Thank you for buying RAB lighting fixtures. Our goal is to design the best quality products to get the job done right. We'd like to hear your comments. Call the Marketing Department at 888-RAB-1000 or email: [marketing@rabweb.com](mailto:marketing@rabweb.com)



## IMPORTANT

**READ CAREFULLY BEFORE INSTALLING FIXTURE. RETAIN THESE INSTRUCTIONS FOR FUTURE REFERENCE.**

Fixtures must be wired in accordance with the National Electrical Code and all applicable local codes. Proper grounding is required for safety. THIS PRODUCT MUST BE INSTALLED IN ACCORDANCE WITH THE APPLICABLE INSTALLATION CODE BY A PERSON FAMILIAR WITH THE CONSTRUCTION AND OPERATION OF THE PRODUCT AND THE HAZARDS INVOLVED.

**WARNING: Make certain power is OFF before installing or maintaining fixture. No user serviceable parts inside.**

## MOUNTING FIXTURE TO CEILING

Mount **Housing** to sturdy ceiling structure as follows:

### FOR PENDANT MOUNTING

1. Choose length of 3/4" NPS **Pendant Stem** (supplied by others).
2. Loosen **Screws (2)** and remove **Side Panel** from **Pendant Box**.
3. Feed wires through **Pendant Stem** and secure **Pendant Stem** to the clearance hole on **Pendant Box** using 2 locknuts (supplied by others). One locknut to be used from the inside of **Pendant Box** and other from the outside. Add thread locking compound and tighten locknuts to prevent fixture rotation.
4. Wire the housing leads to supply wires using UL listed wire connectors according to NEC and local codes in the **Pendant Box**. Push all wires back into **Pendant Box**. Be careful not to pinch wires.
5. Secure the **Side Panel** and tighten **Screws (2)** as shown in **Fig. 1**.
6. If ordered with **LOS BAY800** sensor (suffix /LOS) or similar sensor or LightCloud™ controller, re-attach pre-wired sensor on **Side Cap** to **Housing**. Sensor can be disconnected with supplied quick disconnect connector. Tighten **Side Cap Screw** as shown in **Fig. 2**.

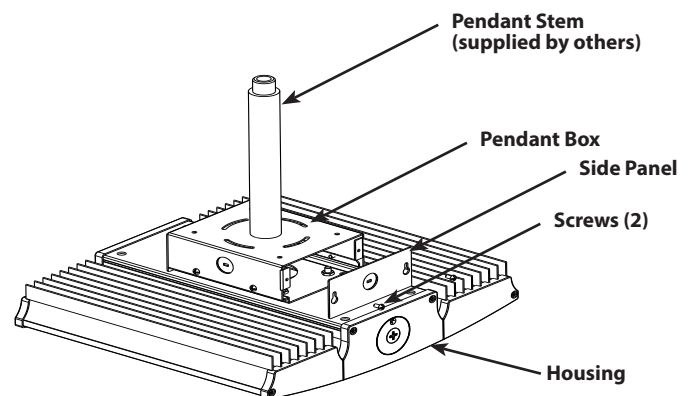


Fig. 1

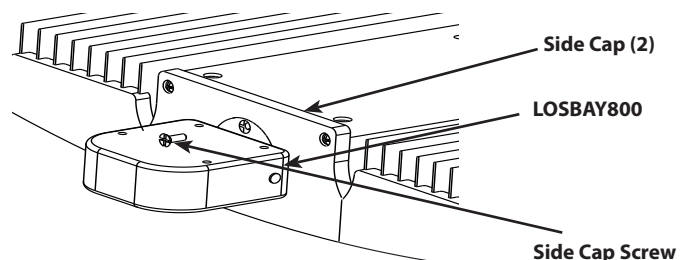


Fig. 2

### FOR SURFACE MOUNTING

1. Loosen **Screws (2)** and remove **Side Panel** from **Pendant Box**.
2. Mount **Pendant Box** to ceiling by drilling out **Drill Out Locations** as shown on **Fig. 3**. Use appropriate mounting hardware suitable for the mounting surface.
3. Wire the housing leads to supply wires using UL listed wire connectors according to NEC and local codes in the **Pendant Box**. Push all wires back into **Pendant Box**. Be careful not to pinch wires.
4. Replace the **Side Panel** and tighten **Screws (2)** as shown in **Fig. 1**.
5. If ordered with **LOS BAY800** sensor (suffix /LOS) or similar sensor or LightCloud™ controller, re-attach pre-wired sensor on **Side Cap** to **Housing**. Sensor can be disconnected with supplied quick disconnect connector. Tighten **Side Cap Screw** as shown in **Fig. 2**.

# HIGHBAY RAIL™ PENDANT INSTALLATION INSTRUCTIONS



Thank you for buying RAB lighting fixtures. Our goal is to design the best quality products to get the job done right. We'd like to hear your comments. Call the Marketing Department at 888-RAB-1000 or email: [marketing@rabweb.com](mailto:marketing@rabweb.com)

## CEILING MOUNT DRILL OUT LOCATIONS

(Not to scale)

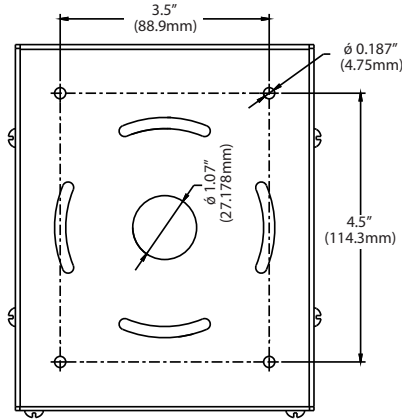


Fig. 3

## 0-10V DIMMABLE WIRING

Universal voltage driver permits operation at 120V thru 277V, 50 or 60 Hz. Sensor (ordered separately) can be disconnected with supplied quick disconnect connector. Units ordered with (/480/D10) suffix are 480V, 50Hz or 60Hz. For 0-10V Dimming, follow the wiring directions as in Fig. 4.

1. Connect the black fixture lead to the LINE supply lead.
2. Connect the white fixture lead to the COMMON supply lead.
3. Connect the GROUND wire from fixture to supply ground.
4. Connect the purple fixture lead to the (V+) DIM lead.
5. Connect the gray fixture lead to the (V-) DIM lead.
6. Cap the yellow fixture lead, if present. Do NOT connect.

NOTE: Do not connect DIM V+ (purple)/ DIM V- (gray) to line voltage or supply ground.

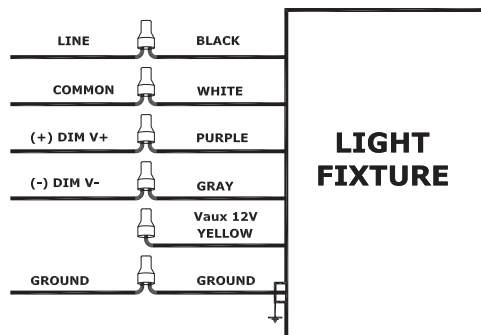


Fig. 4

## BILEVEL DIMMER OPTION

For 100% light output (disabling the dimmer), splice red wire with black line wire.

For chosen output only, leave red wire capped.

For Bilevel Function, connect red wire to switched device.

1. Determine what % light output is desired and set switch prior to installation.  
Options are: 25%, 50%, and 75%.
2. Connect purple wire with driver's purple wire.
3. Connect gray wire with driver's gray wire.
4. Connect black wire with driver and supply line wires.
5. Connect white wire with driver and supply neutral wires.

## CLEANING & MAINTENANCE

**CAUTION: Be sure fixture temperature is cool enough to touch. Do not clean or maintain while fixture is energized.**

1. Lens should be washed in a solution of warm water and any mild, non abrasive household detergent, rinsed with clean water and wiped dry. Do not use chemicals to clean fixture.
2. Do not open fixture to clean the LED. Do not touch the LED.

## TROUBLESHOOTING

1. Check that the line voltage at fixture is correct. Refer to wiring directions.
2. Be sure the fixture is grounded properly.

PATENT - US: Patent D761,477

Note: These instructions do not cover all details or variations in equipment nor do they provide for every possible situation during installation, operation or maintenance.



### Easy Answers

[rabweb.com](http://rabweb.com)  
Visit our website for product info

Tech Help Line  
Call our experts - 888 722-1000

e-mail  
Answered promptly - [sales@rabweb.com](mailto:sales@rabweb.com)

Free Lighting Layouts  
Answered online or by request