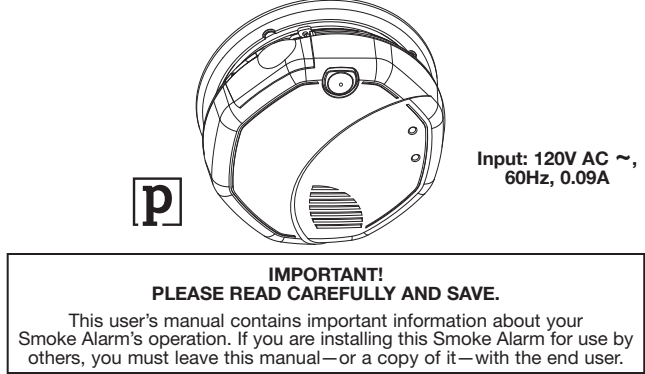


First Alert® USER'S MANUAL

WIRELESS INTERCONNECT AC POWERED SMOKE ALARM WITH BATTERY BACK-UP



Printed in Mexico
M08-0149-007
09/14

© 2014 BRK Brands, Inc. All rights reserved.
Distributed by BRK Brands, Inc.
3301 Liberty Street Road, Aurora, IL 60504-8122
Consumer Affairs: (800) 323-9005 • www.firstalert.com

All First Alert® and BRK® Smoke Alarms conform to regulatory requirements, including UL217 and are designed to detect particles of combustion. Smoke particles of varying number and size are produced in fires.

Ionization technology is generally more sensitive than photoelectric technology at detecting small particles, which tend to be produced in greater amounts by flaming fires, which consume combustible materials rapidly and spread quickly. Sources of these fine may include paper burning in a wastebasket, or a grease fire in the kitchen.

Photoelectric technology is generally more sensitive than ionization technology at detecting large particles, which tend to be produced in greater amounts by smoldering fires, which may smolder for hours before bursting into flame. Sources of these fires may include cigarettes burning in couches or bedding.

For maximum protection, use both types of Smoke Alarms on each level and in every bedroom of your home.

FIRE SAFETY RULES

Follow safety rules and prevent hazardous situations: 1) Use smoking materials properly. Never smoke in bed. 2) Keep matches or lighters away from children; 3) Store flammable materials in proper containers; 4) Keep electrical appliances in good condition and don't overload; 5) Keep stoves, barbecue grills, fireplaces and chimneys grease- and debris-free; 6) Never leave anything cooking on the stove unattended; 7) Keep portable heaters and open flames at least 3 feet away from flammable materials; 8) Don't let rubbish accumulate.

Keep alarms clean and test them weekly. Replace alarms immediately if they are not working properly. Smoke Alarms that do not work cannot alert you to a fire. Keep at least one working fire extinguisher on every floor, and in the kitchen. Have fire escape ladders and other reliable means of escape from an upper floor in case stairs are blocked.

BEFORE YOU INSTALL THIS SMOKE ALARM
IMPORTANT! Read "Recommended Locations for Smoke Alarms" and "Locations to Avoid for Smoke Alarms" before beginning. This manual monitors the air, and when smoke reaches its sensing chamber, it alarms. It can give you more time to escape before fire spreads. This unit can ONLY give an early warning of developing fires if it is installed, maintained and located as described in this manual. This unit will not sense gas, heat, or flame. It cannot prevent or extinguish fires.

Understand the Different Type of Smoke Alarms
Battery powered or electrical? Different Smoke Alarms provide different types of protection. See "About Smoke Alarms" for details.

Know Where To Install Your Smoke Alarms
Fire Safety Professionals recommend at least one Smoke Alarm on every level of your home, in every bedroom, and in every bedroom.

Know What Smoke Alarms Can and Can't Do
A Smoke Alarm can help alert you to fire, giving you precious time to escape. It can only sound an alarm once smoke reaches the sensor. See "Limitations of Smoke Alarms" for details.

Check Your Local Building Codes
This Smoke Alarm is designed to be used in a typical single-family home. It alone will not meet requirements for boarding houses, apartment buildings, hotels or motels. See "Special Compliance Considerations" for details.

! DANGER!
ELECTRICAL SHOCK HAZARD. Turn off the power to the area where the smoke alarm is installed before removing it from the mounting bracket. Failure to turn off the power first may result in serious electrical shock, injury or death.

! WARNING!
This unit will not alert hearing impaired residents. It is recommended that you install special units which use devices like flashing strobe lights to alert hearing impaired residents.

Installation of this unit must conform to the electrical codes in your area; Articles 210 and 300.3 (B) of NFPA 70 (NEC), NFPA 72, NFPA 101; SBC (SBC), UBC (UBC), NBC (NBC), CFC (CFC), and any other local or building codes that may apply. Wiring and installation must be performed by a licensed electrician. Failure to follow these guidelines may result in injury or property damage.

This unit must be powered by a 24-hour, 120VAC pure sine wave 60Hz circuit. Be sure the circuit cannot be turned off by a switch, dimmer, or ground fault circuit interrupter. Failure to connect this unit to a 24-hour circuit may prevent it from providing constant protection.

This Smoke Alarm must have AC or battery power to operate. If the AC power fails, battery back-up will allow the alarm to sound for at least 4 minutes. If AC power fails and the battery is weak, protection should last for at least 7 days. If AC power fails and the battery is weak, protection should last for at least 7 days. If AC power fails and the battery is weak, protection should last for at least 7 days.

Never disconnect the power from an AC powered unit to stop an unwanted alarm. Doing so will disable the unit and remove your protection. In the case of a true unwanted alarm on a window or fan the smoke away from the unit. The alarm will reset automatically when it returns to normal operation. Never remove the batteries from a battery operated unit to stop an unwanted alarm (caused by cooking smoke, etc.). Instead open a window or fan the smoke away from the unit. The alarm will reset automatically.

! CAUTION!
Connect this unit ONLY to other compatible units. See "How To Install This Smoke Alarm" for details. Do not connect it to any other type of alarm or auxiliary device. Connecting anything else to this unit may damage it or prevent it from operating properly.

This Smoke Alarm has a battery drawer which resists closing unless a battery is installed. This warns you the unit will not operate under DC power without a battery.

Do not stand too close to the unit when the alarm is sounding. When you are in emergency, exposure to the horn at close range may harm your hearing.

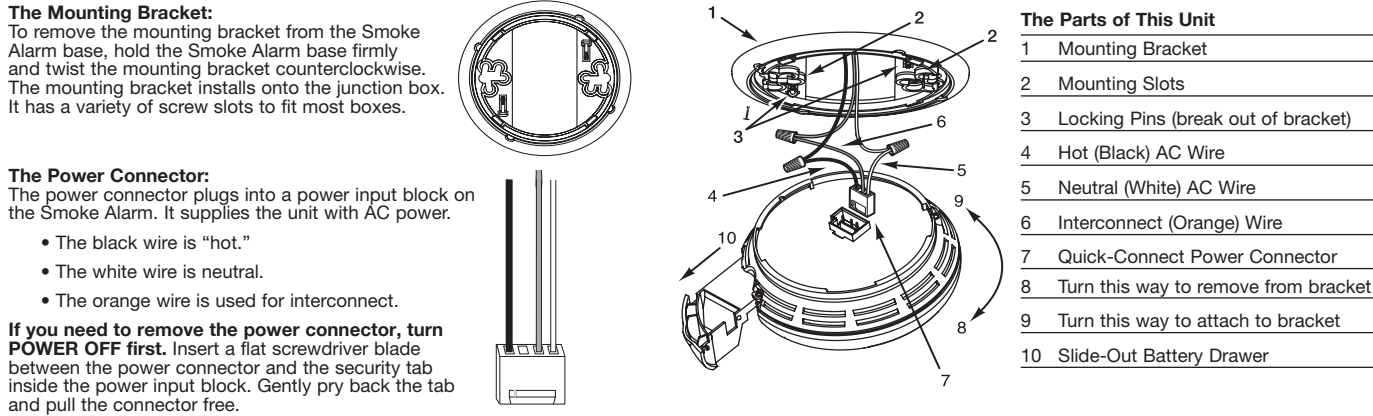
Do not paint over the unit. Paint may clog the openings to the sensing chambers and prevent the unit from operating properly.

HOW TO INSTALL THIS SMOKE ALARM

This Smoke Alarm is designed to be mounted on any standard wiring junction box up to 4-in (10 cm) size, on either the ceiling or wall (if allowed by local codes). Read "Recommended Locations For Smoke Alarms" and "Locations to Avoid For Smoke Alarms" before you begin installation. Tools you will need: • Needle-nose pliers • Standard flathead screwdriver • Phillips screwdriver.

! WARNING! Make sure the Alarm is not receiving excessively noisy power. Examples of noisy power could be major appliances on the same circuit, power from a generator or solar power, light dimmer on the same circuit or mounted near fluorescent lighting. Excessively noisy power may cause damage to your Alarm.

THE PARTS OF THIS SMOKE ALARM



QUICK INSTALLATION INSTRUCTIONS

Easily expand an existing interconnected 120V AC hardwired system by simply replacing one Alarm in the series with the First Alert® Model SA520. Then add additional battery-operated Alarms to expand the system with no additional electrical work.

- Insert the batteries into the battery drawer of the first Alarm and close the drawer.
- The Alarm will sound with a chirp.
- If you purchased the Talking Smoke and Carbon Monoxide Alarm, you will now be prompted to set the Alarm's location. Follow the directions given by the Alarm.
- NOTE: Steps 4 through 6 need to be completed within two minutes. If more than two minutes pass, the Green power LED will stop blinking. Simply open the battery drawer of the second Alarm and repeat steps 4 through 6.
- Insert the batteries into the battery drawer of the next Alarm. DO NOT CLOSE THE DRAWER.
- Press and hold the test button and then close the battery drawer.
- Once you hear the unit chirp, release the test button. The Green power LED will start to blink indicating the WIRELESS INTERCONNECT Alarm is now connected to the system.
- Insert the batteries into the battery drawer of the next Alarm. DO NOT CLOSE THE DRAWER.
- Press and hold the test button on the first Alarm, until the second Alarm chirps and its Green power LED stops blinking. Then release the test button.
- If you purchased the Talking Smoke and Carbon Monoxide Alarm, you will now be prompted to set the Alarm's location. Follow the directions given by the Alarm.
- If you purchased the hardwired battery back-up WIRELESS INTERCONNECT Alarm, you can now connect the hardwired Alarm by installing the power connector to the ceiling of the Alarm.
- Repeat steps 4-9 for additional WIRELESS INTERCONNECT Alarms.

You have now successfully linked your new WIRELESS INTERCONNECT Alarms. To add additional Alarms at a later time, follow steps 4 through 9.

! DANGER!
ELECTRICAL SHOCK HAZARD. Turn off power to the area where you will install this unit at the circuit breaker or fuse box before beginning installation. Failure to turn off the power before installation may result in serious electrical shock, injury or death.

! WARNING!
Failure to meet any of the above requirements could damage the unit and cause them to malfunction, removing your protection. AC and AC/DC Smoke Alarms can be interconnected. Under AC power, all units will alarm when one senses smoke. When power is interrupted, only the AC/DC units in the series will continue to send and receive signals. AC powered Smoke Alarms will not operate.

Interconnected units can provide earlier warning of fire than stand-alone units, especially if a fire starts in a remote area of the dwelling. If any unit in the series senses smoke, all units will alarm. To determine which Smoke Alarm is the first to alarm, see table.

On Initiating Alarms Red LED flashes rapidly
On All Other Alarms Red LED is Off

! IMPORTANT!
Interconnect units within a single family residence only. Otherwise all households will experience unwanted alarms when you test any unit in the series. Interconnected units will only work if they are wired to compatible units and all requirements are met. This unit is designed to be compatible with: First Alert® Smoke Alarm Models SA4120, SA4121B, SA100B, 9120 series. If you are interconnecting more than one Smoke Alarm, you MUST read "Special Requirements For Interconnected Smoke Alarms" below before you begin installation.

- Remove the mounting bracket from the base, and attach it to the junction box.
- Using wire nuts, connect the power connector to the household wiring.

STAND-ALONE ALARM ONLY:
• Connect the white wire on the power connector to the neutral wire in the junction box.
• Connect the black wire on the power connector to the hot wire in the junction box.
• Tuck the orange wire inside the junction box. It is used for interconnect only.

INTERCONNECTED UNITS ONLY:
Strip off about 1/2" (12 mm) of the plastic coating on the orange wire on the power connector.
• Connect the white wire on the power connector to the neutral wire in the junction box.
• Connect the black wire on the power connector to the hot wire in the junction box.
• Connect the orange wire on the power connector to the interconnect wire in the junction box. Repeat for each unit you are interconnecting. Never connect the hot or neutral wires in the junction box to the orange interconnect wire. Never cross hot and neutral wires between Alarms.

! WARNING!
Improper wiring of the power connector or the wiring leading to the power connector will cause damage to the Alarm and may lead to a non-functioning Alarm.

! DANGER!
ELECTRICAL SHOCK HAZARD. Turn off the power to the area where the smoke alarm is installed before removing it from the mounting bracket. Failure to turn off the power first may result in serious electrical shock, injury or death.

! WARNING!
Failure to turn off the power first may result in serious electrical shock, injury or death.

! WARNING!
Failure to turn off the power first may result in serious electrical shock, injury or death.

! WARNING!
Failure to turn off the power first may result in serious electrical shock, injury or death.

! WARNING!
Failure to turn off the power first may result in serious electrical shock, injury or death.

! WARNING!
Failure to turn off the power first may result in serious electrical shock, injury or death.

! WARNING!
Failure to turn off the power first may result in serious electrical shock, injury or death.

! WARNING!
Failure to turn off the power first may result in serious electrical shock, injury or death.

! WARNING!
Failure to turn off the power first may result in serious electrical shock, injury or death.

! WARNING!
Failure to turn off the power first may result in serious electrical shock, injury or death.

! WARNING!
Failure to turn off the power first may result in serious electrical shock, injury or death.

! WARNING!
Failure to turn off the power first may result in serious electrical shock, injury or death.

! WARNING!
Failure to turn off the power first may result in serious electrical shock, injury or death.

UNDERSTANDING THE INDICATOR LIGHTS AND ALARM HORN PATTERNS

AC Power	All Models	DC Power
Normal Operation	Constant Green LED No Audible Alarm	Green LED Off No Audible Alarm
Test Condition	Constant Green LED Rapidly Flashing Red LED Audible Alarm	Green LED Off Rapidly Flashing Red LED Audible Alarm
Alarm Condition* (Initiating Unit)	Constant Green LED Rapidly Flashing Red LED Audible Alarm	Green LED Off Rapidly Flashing Red LED Audible Alarm
Silence Mode	Rapidly Flashing Red LED	Rapidly Flashing Red LED
Low Battery	Alarm "chirp" approx. once/minute	Alarm "chirp" approx. once/minute
Malfunction	3 rapid "chirps" every minute; LED flashes approx. once a minute	3 rapid "chirps" every minute; LED flashes approx. once a minute

NOTE: When power is applied, unit(s) may alarm momentarily. *When any Smoke Alarm in an interconnected series triggers an alarm, its red LED will flash rapidly. The red LEDs will remain OFF on any remaining Alarms in the series. This feature helps responders identify which unit(s) triggered the alarm.

WEEKLY TESTING

! WARNING!
NEVER use an open flame of any kind to test this unit. You might accidentally damage or set fire to the unit or to your home. The built-in test switch accurately tests the unit's operation as required by Underwriters Laboratories, Inc. (UL).
If the Alarm ever fails to test properly, replace it immediately. NEVER ignore any alarm. Ignoring the alarm may result in injury or death.

! CAUTION!
DO NOT stand close to the Alarm when the horn is sounding. Exposure at close range may be harmful to your hearing. When testing, step away when horn starts sounding.

! CAUTION!
It is important to test this unit every week to make sure it is working properly. Using the test button is the recommended way to test this Smoke Alarm. Press and hold the test button on the cover of the unit until the alarm sounds the unit may continue to alarm for a few seconds after you stop pressing the test button. This will ensure the unit is receiving power and test it again. If it still does not alarm, replace it immediately.

! CAUTION!
During testing, you will hear a loud, repeating horn pattern: 3 beeps, pause, 3 beeps, pause.

! CAUTION!
If the unit alarms and you are not testing the unit, it is warning you of a potentially dangerous situation that requires your immediate attention. NEVER ignore any alarm. Ignoring the alarm may result in injury or death.

! CAUTION!
Never disconnect the AC power to quiet an unwanted alarm. Disconnecting the power disables the Alarm so it cannot sense smoke. This will remove your protection. Instead, open a window or fan the smoke away from the unit. The Alarm will reset automatically.

! CAUTION!
If the unit alarms get everyone out of the house immediately.

! CAUTION!
If the unit alarms and you are not testing the unit, it is warning you of a potentially dangerous situation that requires your immediate attention. NEVER ignore any alarm. Ignoring the alarm may result in injury or death.

! CAUTION!
If the unit alarms and you are not testing the unit, it is warning you of a potentially dangerous situation that requires your immediate attention. NEVER ignore any alarm. Ignoring the alarm may result in injury or death.

! CAUTION!
If the unit alarms and you are not testing the unit, it is warning you of a potentially dangerous situation that requires your immediate attention. NEVER ignore any alarm. Ignoring the alarm may result in injury or death.

! CAUTION!
If the unit alarms and you are not testing the unit, it is warning you of a potentially dangerous situation that requires your immediate attention. NEVER ignore any alarm. Ignoring the alarm may result in injury or death.

! CAUTION!
If the unit alarms and you are not testing the unit, it is warning you of a potentially dangerous situation that requires your immediate attention. NEVER ignore any alarm. Ignoring the alarm may result in injury or death.

! CAUTION!
If the unit alarms and you are not testing the unit, it is warning you of a potentially dangerous situation that requires your immediate attention. NEVER ignore any alarm. Ignoring the alarm may result in injury or death.

! CAUTION!
If the unit alarms and you are not testing the unit, it is warning you of a potentially dangerous situation that requires your immediate attention. NEVER ignore any alarm. Ignoring the alarm may result in injury or death.

! CAUTION!
If the unit alarms and you are not testing the unit, it is warning you of a potentially dangerous situation that requires your immediate attention. NEVER ignore any alarm. Ignoring the alarm may result in injury or death.

! CAUTION!
If the unit alarms and you are not testing the unit, it is warning you of a potentially dangerous situation that requires your immediate attention. NEVER ignore any alarm. Ignoring the alarm may result in injury or death.

! CAUTION!
If the unit alarms and you are not testing the unit, it is warning you of a potentially dangerous situation that requires your immediate attention. NEVER ignore any alarm. Ignoring the alarm may result in injury or death.

! CAUTION!
If the unit alarms and you are not testing the unit, it is warning you of a potentially dangerous situation that requires your immediate attention. NEVER ignore any alarm. Ignoring the alarm may result in injury or death.

! CAUTION!
If the unit alarms and you are not testing the unit, it is warning you of a potentially dangerous situation that requires your immediate attention. NEVER ignore any alarm. Ignoring the alarm may result in injury or death.

! CAUTION!
If the unit alarms and you are not testing the unit, it is warning you of a potentially dangerous situation that requires your immediate attention. NEVER ignore any alarm. Ignoring the alarm may result in injury or death.

! CAUTION!
If the unit alarms and you are not testing the unit, it is warning you of a potentially dangerous situation that requires your immediate attention. NEVER ignore any alarm. Ignoring the alarm may result in injury or death.

! CAUTION!
If the unit alarms and you are not testing the unit, it is warning you of a potentially dangerous situation that requires your immediate attention. NEVER ignore any alarm. Ignoring the alarm may result in injury or death.

! CAUTION!
If the unit alarms and you are not testing the unit, it is warning you of a potentially dangerous situation that requires your immediate attention. NEVER ignore any alarm. Ignoring the alarm may result in injury or death.

! CAUTION!
If the unit alarms and you are not testing the unit, it is warning you of a potentially dangerous situation that requires your immediate attention. NEVER ignore any alarm. Ignoring the alarm may result in injury or death.

! CAUTION!
If the unit alarms and you are not testing the unit, it is warning you of a potentially dangerous situation that requires your immediate attention. NEVER ignore any alarm. Ignoring the alarm may result in injury or death.

! CAUTION!
If the unit alarms and you are not testing the unit, it is warning you of a potentially dangerous situation that requires your immediate attention. NEVER ignore any alarm. Ignoring the alarm may result in injury or death.

WIRELESS OPERATION
First Alert® WIRELESS INTERCONNECT Technology is the easy, cost-effective way to provide your family with whole-home safety. All WIRELESS INTERCONNECT Alarms communicate with each other without wires or connectors. When one Alarm sounds, they all sound. This provides your family with an earlier warning of potential danger.

The communication distance (range) between any two WIRELESS INTERCONNECT Alarms is typically 50 feet (15 meters) inside of a home. Some features of a home, such as the number of floors, number/size of rooms, furniture and types of building materials used may reduce the range of the Alarms. Examples include: ductwork, large metallic appliances (refrigerators) and metal studs. A feature of WIRELESS INTERCONNECT Alarms is that they operate as a mesh network. All Alarms will repeat any alarm signal that is received to all other WIRELESS INTERCONNECT Alarms. Interference from structural conditions can be overcome.

By adding additional Alarms to route the wireless signal around obstructions.

! IMPORTANT!
The range and proper operation of any wireless device will vary depending on its surroundings. It is very important that each Alarm is tested individually before and after installation to make sure that all Alarms respond properly.

! IMPORTANT!
The WIRELESS INTERCONNECT Alarms are not to be used outdoors or to transmit between buildings. The Alarms will not communicate properly under these conditions.

! IMPORTANT!
Metal objects and metallic wallpaper may interfere with signals from wireless Alarms. Alarms should be tested after changes to your home such as remodeling, moving furniture, and with metal doors opened and closed.

Your First Alert® WIRELESS INTERCONNECT Smoke Alarm will automatically communicate potential danger to all other First Alert® WIRELESS INTERCONNECT Smoke Alarms.

! CAUTION!
Changes or modifications not expressly approved by BRK Brands, Inc. could void the user's authority to operate the equipment.

IF THIS SMOKE ALARM SOUNDS RESPONDING TO AN ALARM
During an alarm, you will hear a loud, repeating horn pattern: 3 beeps, pause, 3 beeps, pause.

! WARNING!
If the unit alarms and you are not testing the unit, it is warning you of a potentially dangerous situation that requires your immediate attention. NEVER ignore any alarm. Ignoring the alarm may result in injury or death.

! WARNING!
If the unit alarms and you are not testing the unit, it is warning you of a potentially dangerous situation that requires your immediate attention. NEVER ignore any alarm. Ignoring the alarm may result in injury or death.

! WARNING!
If the unit alarms and you are not testing the unit, it is warning you of a potentially dangerous situation that requires your immediate attention. NEVER ignore any alarm. Ignoring the alarm may result in injury or death.

! WARNING!
If the unit alarms and you are not testing the unit, it is warning you of a potentially dangerous situation that requires your immediate attention. NEVER ignore any alarm. Ignoring the alarm may result in injury or death.

! WARNING!
If the unit alarms and you are not testing the unit, it is warning you of a potentially dangerous situation that requires your immediate attention. NEVER ignore any alarm. Ignoring the alarm may result in injury or death.

! WARNING!
If the unit alarms and you are not testing the unit, it is warning you of a potentially dangerous situation that requires your immediate attention. NEVER ignore any alarm. Ignoring the alarm may result in injury or death.

! WARNING!
If the unit alarms and you are not testing the unit, it is warning you of a potentially dangerous situation that requires your immediate attention. NEVER ignore any alarm. Ignoring the alarm may result in injury or death.

! WARNING!
If the unit alarms and you are not testing the unit, it is warning you of a potentially dangerous situation that requires your immediate attention. NEVER ignore any alarm. Ignoring the alarm may result in injury or death.

! WARNING!
If the unit alarms and you are not testing the unit, it is warning you of a potentially dangerous situation that requires your immediate attention. NEVER ignore any alarm. Ignoring the alarm may result in injury or death.

! WARNING!
If the unit alarms and you are not testing the unit, it is warning you of a potentially dangerous situation that requires your immediate attention. NEVER ignore any alarm. Ignoring the alarm may result in injury or death.

! WARNING!
If the unit alarms and you are not testing the unit, it is warning you of a potentially dangerous situation that requires your immediate attention. NEVER ignore any alarm. Ignoring the alarm may result in injury or death.

! WARNING!
If the unit alarms and you are not testing the unit, it is warning you of a potentially dangerous situation that requires your immediate attention. NEVER ignore any alarm. Ignoring the alarm may result in injury or death.

! WARNING!
If the unit alarms and you are not testing the unit, it is warning you of a potentially dangerous situation that requires your immediate attention. NEVER ignore any alarm. Ignoring the alarm may result in injury or death.

! WARNING!
If the unit alarms and you are not testing the unit, it is warning you of a potentially dangerous situation that requires your immediate attention. NEVER ignore any alarm. Ignoring the alarm may result in injury or death.

! WARNING!
If the unit alarms and you are not testing the unit, it is warning you of a potentially dangerous situation that requires your immediate attention. NEVER ignore any alarm. Ignoring the alarm may result in injury or death.

! WARNING!
If the unit alarms and you are not testing the unit, it is warning you of a potentially dangerous situation that requires your immediate attention. NEVER ignore any alarm. Ignoring the alarm may result in injury or death.

! WARNING!
If the unit alarms and you are not testing the unit, it is warning you of a potentially dangerous situation that requires your immediate attention. NEVER ignore any alarm. Ignoring the alarm may result in injury or death.

! WARNING!
If the unit alarms and you are not testing the unit, it is warning you of a potentially dangerous situation that requires your immediate attention. NEVER ignore any alarm. Ignoring the alarm may result in injury or death.

! WARNING!
If the unit alarms and you are not testing the unit, it is warning you of a potentially dangerous situation that requires your immediate attention. NEVER ignore any alarm. Ignoring the alarm may result in injury or death.

! WARNING!
If the unit alarms and you are not testing the unit, it is warning you of a potentially dangerous situation that requires your immediate attention. NEVER ignore any alarm. Ignoring the alarm may result in injury or death.

! WARNING!
If the unit alarms and you are not testing the unit, it is warning you of a potentially dangerous situation that requires your immediate attention. NEVER ignore any alarm. Ignoring the alarm may result in injury or death.

! WARNING!
If the unit alarms and you are not testing the unit, it is warning you of a potentially dangerous situation that requires your immediate attention. NEVER ignore any alarm. Ignoring the alarm may result in injury or death.

! WARNING!
If the unit alarms and you are not testing the unit, it is warning you of a potentially dangerous situation that requires your immediate attention. NEVER ignore any alarm. Ignoring the alarm may result in injury or death.

! WARNING!
If the unit alarms and you are not testing the unit, it is warning you of a potentially dangerous situation that requires your immediate attention. NEVER ignore any alarm. Ignoring the alarm may result in injury or death.

! WARNING!
If the unit alarms and you are not testing the unit, it is warning you of a potentially dangerous situation that requires your immediate attention. NEVER ignore any alarm. Ignoring the alarm may result in injury or death.

RECOMMENDED LOCATIONS FOR SMOKE ALARMS

Installing Smoke Alarms in Single-Family Residences
The National Fire Protection Association (NFPA), recommends one Smoke Alarm on every floor, in every sleeping area, in every bedroom. In new construction, the Smoke Alarms must be AC powered and interconnected. See "Agency Placement Recommendations" for details. For additional coverage, it is recommended that the Smoke Alarm be installed in common areas like lobbies, hallways, and stairways. Using this Smoke Alarm in common areas may not provide sufficient warning to all residents or meet local fire protection ordinances/regulations.

More specifically, install Smoke Alarms:
• On every level of your home, including finished attics and basements.
• Inside every bedroom, especially if people sleep with the door partly or completely closed.

• In the hall near every sleeping area. If your home has multiple sleeping areas, install a unit in each. If a hall is more than 40 feet long (12 meters), install a unit at each end.
• At the top of the first-to-second floor stairway, and at the bottom of the basement stairway.

Specific requirements for Smoke Alarm installation vary from state to state and from region to region. Check with your local Fire Department for current requirements in your area. It is recommended AC or AC/DC units be interconnected for added protection.

BATTERY OPERATED AND WIRELESS
This equipment has been tested and found to comply with the limits for a Class B digital device, pursuant to Part 15 of the FCC rules. These limits are designed to provide reasonable protection against harmful interference in a residential installation. This equipment generates, uses and can radiate radio frequency energy and, if not installed and used in accordance with the instructions, may cause harmful interference to radio communications. However, there is no guarantee that the interference will not occur in a particular installation. If this equipment does cause harmful interference to radio or television reception, which can be determined by turning the equipment off and on, the user is encouraged to try to correct the interference by one or more of the following measures:

• Reorient or relocate the receiving antenna.
• Increase the separation between the equipment and receiver.
• Connect the equipment into an outlet on a circuit different from that of the receiver.

• Consult the dealer or an experienced radio or TV technician for help.
• Warning: Changes or modifications to the product, not expressly approved by First Alert / BRK Brands, Inc., could void the user's authority to operate the equipment.

This device complies with Part 15 of the FCC Rules. Operation is subject to the following two conditions: (1) this device may not cause harmful interference, and (2) this device must accept any interference received, including interference that may cause undesired operation. FCC ID: MTUS2011.

AGENCY PLACEMENT RECOMMENDATIONS
NFPA 72 Chapter 29
"For your information, the National Fire Alarm and Signaling Code, NFPA 72, reads as follows:"

29.5.1.1 Required Detection.
29.5.1.1.1 "Where required by other governing laws, codes, or standards for a specific type of occupancy, approved single and multiple-station smoke alarms shall be installed as follows:

(1) "In all sleeping rooms and guest rooms
(2) "Outside of each separate dwelling unit sleeping area, within 21 ft (6.4 m) of any door to a sleeping room, with the distance measured along a path of travel
(3) "On every level of a dwelling unit, including basements
(4) "On every level of a residential board and care occupancy (small facility), including basements and excluding crawl spaces and unfinished attics
(5) "In the living area(s) of a guest suite
(6) "In the living area(s) of a residential board and care occupancy (small facility)"

(Reprinted with permission from NFPA 72®, National Fire Alarm and Signaling Code Copyright © 2010 National Fire Protection Association, Quincy, MA 02269. This reprinted material is not the complete and official position of the National Fire Protection Association, on the referenced subject which is represented only by the standard in its entirety.) (National Fire Alarm and Signaling Code) and NFPA 72® are registered trademarks of the National Fire Protection Association, Inc., Quincy, MA 02269.)

Smoke Alarms cannot detect fires if the smoke does not reach the Alarms. Smoke from fires in chimneys or walls, on roofs, or on the other side of closed doors may not reach the sensing chamber and set off the Alarm. That is why one unit should be installed inside each bedroom or sleeping area—especially if bedroom or sleeping areas are closed at night—and in the hallway between them.

Smoke Alarms may not detect fire on another floor or area of the dwelling. For example, a stand-alone unit on the second floor may not detect smoke from a basement fire until the fire spreads. This may not give you enough time to safely escape. To ensure the maximum minimum protection is at least one unit in every sleeping area, and every bedroom on every level of your dwelling. Even with a unit on every floor, stand-alone units may not provide as much protection as interconnected units, especially if the fire starts in a remote area. Some experts recommend installing interconnected AC powered units with battery back-up (see "About Smoke Alarms") or professional fire detection systems, so if one senses smoke, all stand-alone, interconnected units may provide earlier