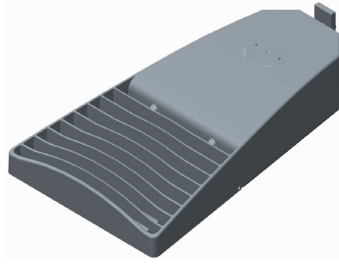


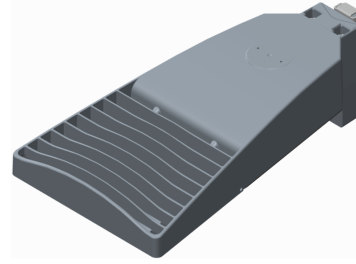
LOTBLASTER™ 65W 110W 160W INSTALLATION INSTRUCTIONS



Thank you for buying RAB lighting fixtures. Our goal is to design the best quality products to get the job done right. We'd like to hear your comments. Call the Marketing Department at 888-RAB-1000 or email: marketing@rabweb.com



LOTBLASTER WITHOUT
UNIVERSAL POLE ADAPTER



LOTBLASTER WITH
UNIVERSAL POLE ADAPTER

IMPORTANT

READ CAREFULLY BEFORE INSTALLING FIXTURE. RETAIN THESE INSTRUCTIONS FOR FUTURE REFERENCE.

RAB fixtures must be wired in accordance with the National Electrical Code and all applicable local codes. Proper grounding is required for safety. This product must be installed in accordance with the applicable installation code by a person familiar with the construction and operation of the product and the hazards involved.

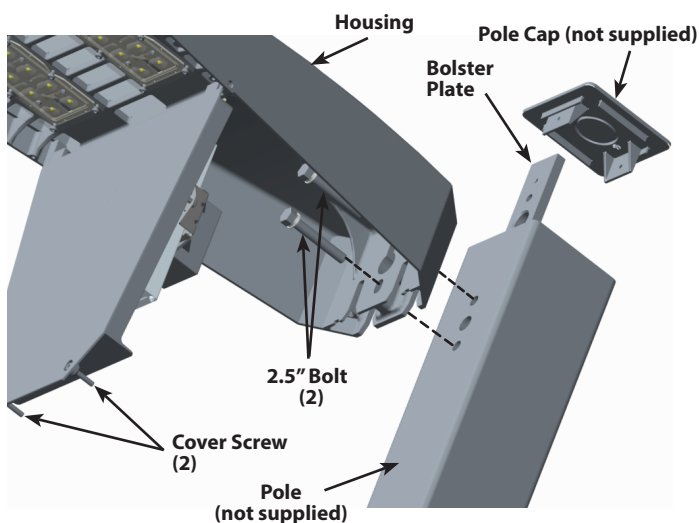
WARNING: Make certain power is OFF before installing or maintaining fixture. No user serviceable parts inside.

CAUTION: The fixture weighs 22lbs. Make sure pole and hardware supplied by others (if any) can withstand the weight of the fixture.

MOUNTING FIXTURE DIRECTLY TO POLE

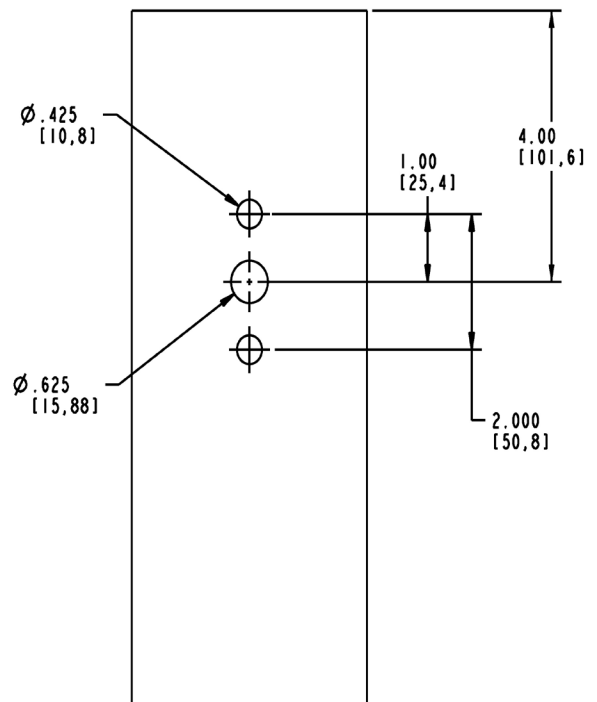
Follow steps below to mount the **Housing** to RAB square pole and check that pole is drilled according to Pole Drawing Detail -

1. Loosen **Cover Screw (2)** to open the **Housing**.
2. Feed supply wires from center opening of **Pole (not supplied)** into **Housing**.
3. Line up **Bolster Plate**, **Pole**, and **Housing**. Insert **2-1/2" Bolts (2)** and thread into **Bolster Plate** along with washers and lockwashers (supplied) as shown below. Be sure the gasket is between **Housing** and **Pole**.
4. Make necessary connections inside the **Housing** and knot wires for strain relief.
5. Close **Housing** cover and tighten the **Cover Screws (2)**.
6. Secure **Pole Cap (not supplied)**.



POLE DRILLING DETAIL

For non-RAB poles use these dimensions to drill the pole. This template is not to scale. Please use measurements shown. For pole pattern other than 2" On Center, use accessory CAT# LOT-UPA (Universal Pole Adapter).



LOTBLASTER™ 65W 110W 160W INSTALLATION INSTRUCTIONS

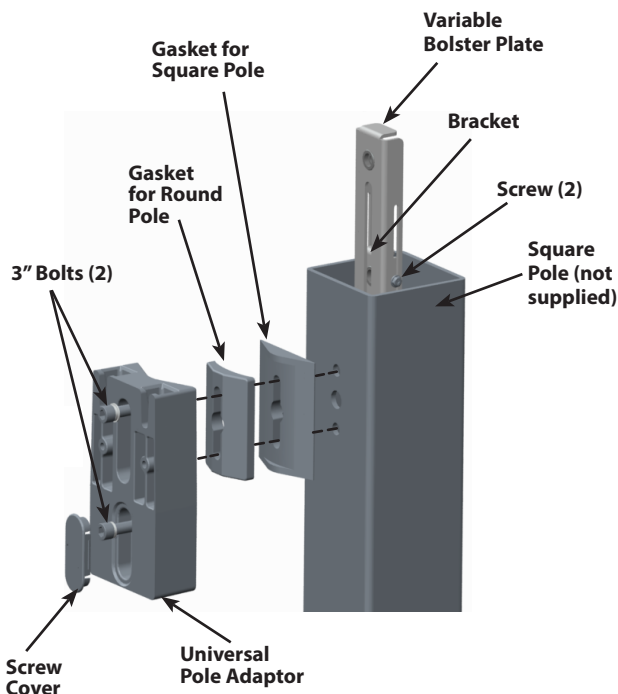


Thank you for buying RAB lighting fixtures. Our goal is to design the best quality products to get the job done right. We'd like to hear your comments. Call the Marketing Department at 888-RAB-1000 or email: marketing@rabweb.com

MOUNTING UNIVERSAL POLE ADAPTER TO SQUARE POLE

Follow steps below to mount the **Universal Pole Adaptor (UPA)** to **Square Pole (not supplied)**. Refer to [Variable Bolster Plate Detail](#) regarding drill hole spacing on pole.

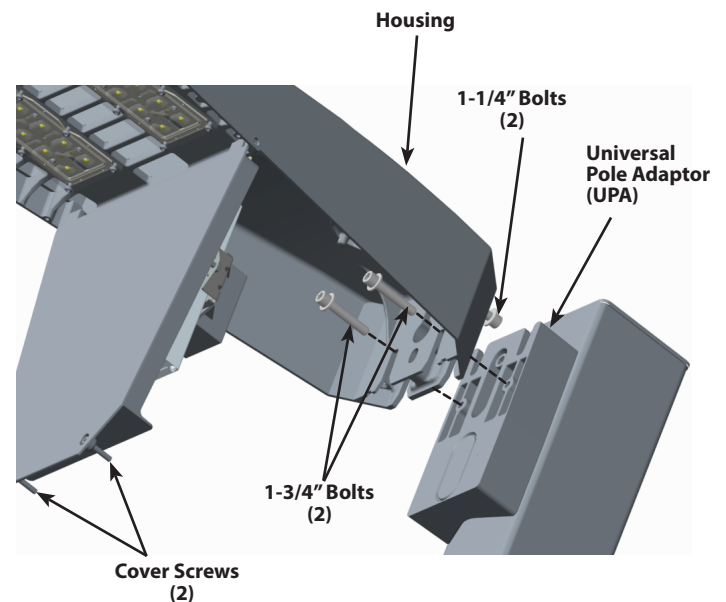
1. Adjust **Bracket** on **Variable Bolster Plate** to desired bolt spacing and tighten **Screw (2)**. Refer to [Variable Bolster Plate Detail](#) for more information.
2. For **Square Pole (not supplied)**, use **Gasket for Round Pole** along with **Gasket for Square Pole**.
3. Line up **Universal Pole Adaptor (UPA)**, **Gasket for Round Pole**, **Gasket for Square Pole**, top hole on the **Square Pole** and top hole on **Variable Bolster Plate**.
4. Feed supply wires from center opening of **Square Pole** through gaskets and **UPA**.
5. Thread **3" Bolts (2)** along with washers and lockwashers (supplied) through **UPA** and tightly secure to **Variable Bolster Plate**.
6. Insert the **Screw Cover**.



MOUNTING FIXTURE TO UNIVERSAL POLE ADAPTER

Follow steps below to mount the **Housing** to **Universal Pole Adaptor (UPA)** -

1. Tightly secure **1-1/4" Bolts (2)** to **Housing** from the outside as shown below, until they bottom out.
2. Feed supply wires from **UPA** to **Housing**.
3. Slide fixture down onto **UPA**. Make sure the fixture is held stable by the **1-1/4" Bolts (2)**.
4. Loosen **Cover Screws (2)** to open the **Housing**.
5. Be sure the gasket is between **Housing** and **UPA**. Insert and tighten **1-3/4" Bolts (2)** from inside of **Housing** into the **Universal Pole Adaptor**.
6. Make necessary connections inside the **Housing** and knot wires for strain relief.
7. Close **Housing** cover and tighten the **Cover Screws (2)**.
8. Secure pole cap (not supplied).



LOTBLASTER™ 65W 110W 160W INSTALLATION INSTRUCTIONS

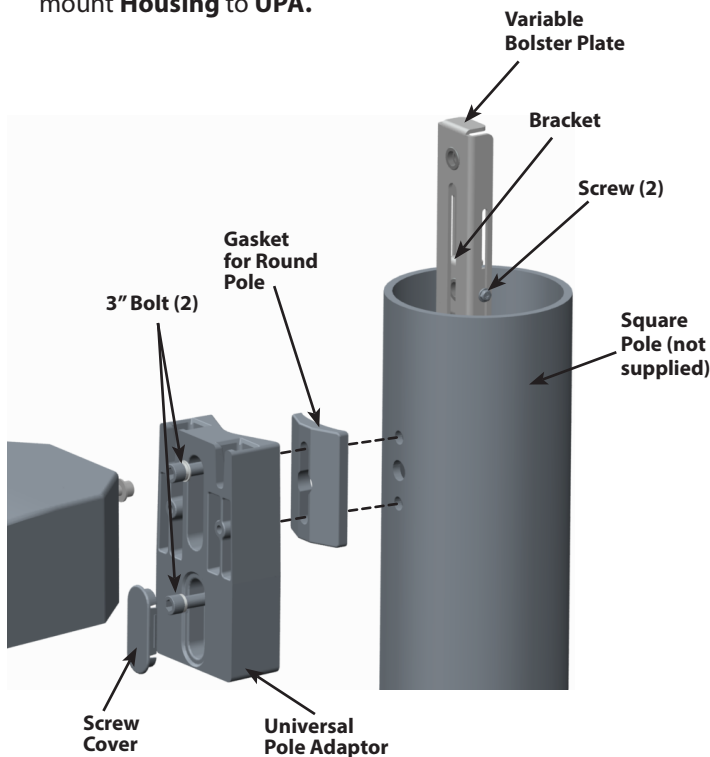


Thank you for buying RAB lighting fixtures. Our goal is to design the best quality products to get the job done right. We'd like to hear your comments. Call the Marketing Department at 888-RAB-1000 or email: marketing@rabweb.com

MOUNTING UNIVERSAL POLE ADAPTER TO ROUND POLE

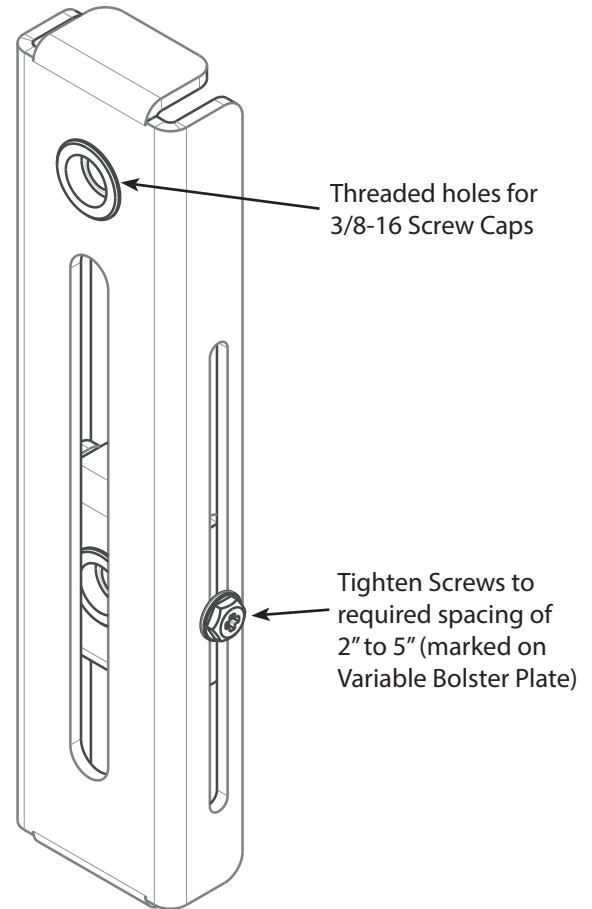
Follow steps below to mount the **Universal Pole Adaptor (UPA)** to **Round Pole (not supplied)**. Refer to [Variable Bolster Plate Detail](#) regarding drill hole spacing on pole.

1. Adjust **Bracket** on **Variable Bolster Plate** to desired bolt spacing and tighten **Screw (2)**. Refer to [Variable Bolster Plate Detail](#) for more information.
2. For **Round Pole (not supplied)**, use **Gasket for Round Pole**. Discard Gasket for Square Pole.
3. Line up **Universal Pole Adaptor (UPA)**, **Gasket for Round Pole**, top hole on the **Round Pole** and top hole on **Variable Bolster Plate**.
4. Feed supply wires from center opening of **Round Pole** through gaskets and **UPA**.
5. Thread **3" Bolts (2)** along with washers and lockwashers (supplied) through **UPA** and tightly secure to **Variable Bolster Plate**.
6. Insert the **Screw Cover**.
7. Refer to [Mounting fixture to Universal Pole Adapter](#) to mount **Housing** to **UPA**.



VARIABLE BOLSTER PLATE DETAIL

For non-RAB poles use these dimensions to drill the pole. This template is not to scale.



LOTBLASTER™ 65W 110W 160W INSTALLATION INSTRUCTIONS

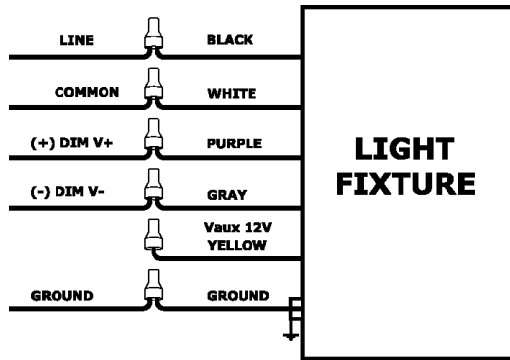


Thank you for buying RAB lighting fixtures. Our goal is to design the best quality products to get the job done right. We'd like to hear your comments. Call the Marketing Department at 888-RAB-1000 or email: marketing@rabweb.com

0-10V DIMMABLE WIRING

Universal voltage driver permits operation at 120V thru 277V, 50 or 60 Hz. 0-10V control wires must be rated for 300V minimum. Units ordered with (/480/D10) suffix operate at 480V, 50Hz/ 60Hz. Follow the wiring directions as shown in figure below.

1. Connect the black fixture lead to the LINE supply lead.
2. Connect the white fixture lead to the COMMON supply lead.
3. Connect the GROUND wire from fixture to supply ground. Do NOT connect the GROUND of the dimming fixture to the output.
4. Connect the purple fixture lead to the (V+) DIM lead.
5. Connect the gray fixture lead to the (V-) DIM lead.
6. Cap the yellow fixture lead, if present. Do NOT connect.



RECEPTACLE OPTION

Units ordered with (/PCT) suffix is supplied with 3 wire receptacle and 120-277V Twistlock Photocell. Units ordered with (/PCT4) is supplied with 3 wire receptacle and 480V Twistlock Photocell.

Units ordered with (/5PR) suffix is supplied with 5-Pin receptacle without photocell. Units ordered with (/7PR) suffix is supplied with 7-Pin receptacle without photocell. Brown and Orange wires from the 7-Pin receptacle are not connected and are reserved to DALI or other control systems.

CLEANING & MAINTENANCE

CAUTION: Be sure fixture temperature is cool enough to touch. Do not clean or maintain while fixture is energized.

1. Lens should be washed in a solution of warm water and any mild, non abrasive household detergent, rinsed with clean water and wiped dry.
2. Do not open fixture to clean the LED. Do not touch the LED.

BILEVEL DIMMER OPTION

For 100% light output (disabling the dimmer), splice red wire with black line wire.

For chosen output only, leave red wire capped.

For Bilevel Function, connect red wire to switched device. Determine what % light output is desired and set switch prior to installation. Options are: 25%, 50%, and 75%.

TROUBLESHOOTING

1. Check that the line voltage at the fixture is correct. Refer to wiring directions.
2. Be sure the fixture is grounded properly.
3. Ensure the photocell, if used, is functioning properly.

Pending: Patent pending

Note: These instructions do not cover all details or variations in equipment nor do they provide for every possible situation during installation, operation or maintenance.



Easy Installation & Product Help

Tech Help Line
Call our experts 888 RAB-1000

rabweb.com
Visit our website for product info

email
Answered promptly sales@rabweb.com