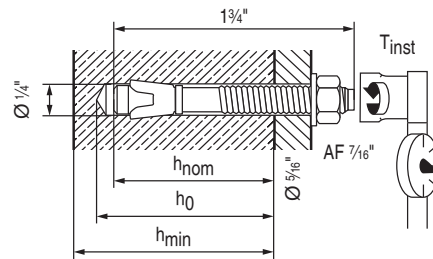
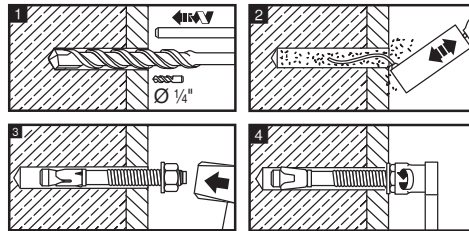


282502 IFU
13.7.2010

KB3 1/4 x 1 3/4

282502



Base Material		Solid Concrete	Grout-Filled Block
Min. h_{nom}	[in.]	1 1/4	1 1/8
Min. h_0	[in.]	$h_{nom} + 1/4$	$h_{nom} + 1/4$
h_{min}	[in.]	4 or $h_0 + 1/4$ ¹⁾	3 or $h_{nom} \times 1,5$ ¹⁾
T_{inst}	[ft-lb]	4	4

1) whichever is greater

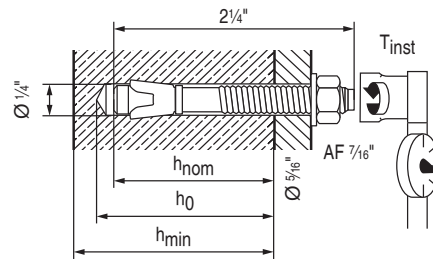
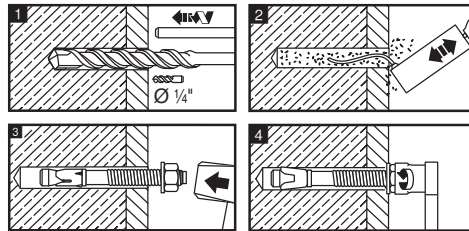
Hilti Inc. (US), www.us.hilti.com, 1 800 879 8000
Hilti Co. (Canada), www.ca.hilti.com, 1 800 363 4458

Use only carbide-tipped masonry drill bits complying with ANSI B212.15-1994

282503 IFU
13.7.2010

KB3 1/4 x 2 1/4

282503



Base Material		Solid Concrete	Grout-Filled Block
Min. h_{nom}	[in.]	1 1/4	1 1/8
Min. h_0	[in.]	$h_{nom} + 1/4$	$h_{nom} + 1/4$
h_{min}	[in.]	4 or $h_0 + 1/4$ ¹⁾	3 or $h_{nom} \times 1,5$ ¹⁾
T_{inst}	[ft-lb]	4	4

1) whichever is greater

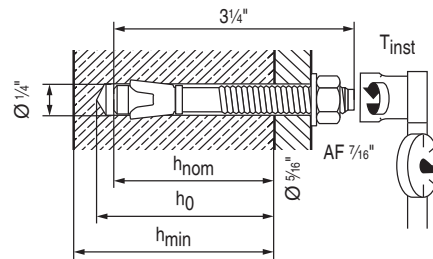
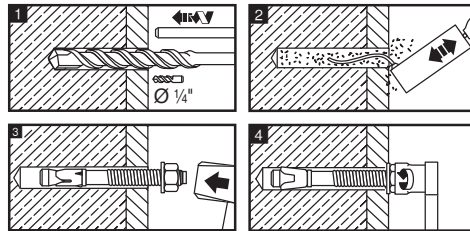
Use only carbide-tipped masonry drill bits complying with ANSI B212.15-1994

Hilti Inc. (US), www.us.hilti.com, 1 800 879 8000
Hilti Co. (Canada), www.ca.hilti.com, 1 800 363 4458

282504 IFU
13.7.2010

KB3 1/4 x 3/4

282504



Base Material		Solid Concrete	Grout-Filled Block
Min. h_{nom}	[in.]	1 1/4	1 1/8
Min. h_0	[in.]	$h_{nom} + 1/4$	$h_{nom} + 1/4$
h_{min}	[in.]	4 or $h_0 + 1/4$ ¹⁾	3 or $h_{nom} \times 1,5$ ¹⁾
T_{inst}	[ft-lb]	4	4

1) whichever is greater

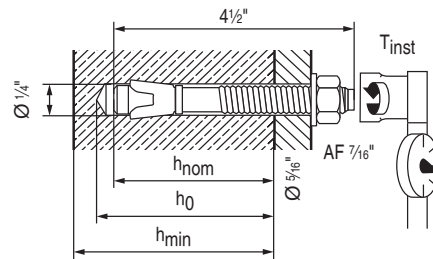
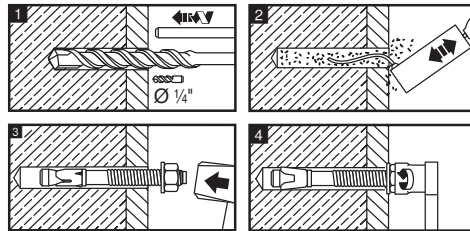
Use only carbide-tipped masonry drill bits complying with ANSI B212.15-1994

Hilti Inc. (US), www.us.hilti.com, 1 800 879 8000
Hilti Co. (Canada), www.ca.hilti.com, 1 800 363 4458

282521 IFU
13.7.2010

KB3 1/4 x 4 1/2

282521



Base Material		Solid Concrete	Grout-Filled Block
Min. h_{nom}	[in.]	1 1/4	1 1/8
Min. h_0	[in.]	$h_{nom} + 1/4$	$h_{nom} + 1/4$
h_{min}	[in.]	4 or $h_0 + 1 1/4$ ¹⁾	3 or $h_{nom} \times 1,5$ ¹⁾
T_{inst}	[ft-lb]	4	4

1) whichever is greater

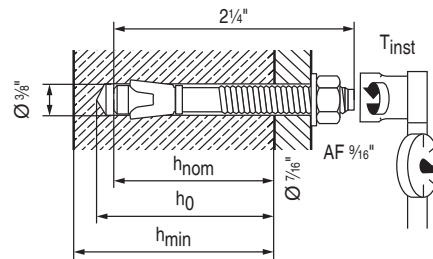
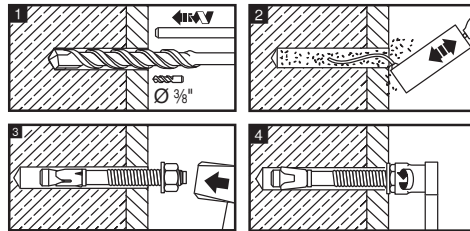
Use only carbide-tipped masonry drill bits complying with ANSI B212.15-1994

Hilti Inc. (US), www.us.hilti.com, 1 800 879 8000
Hilti Co. (Canada), www.ca.hilti.com, 1 800 363 4458

282505 IFU
13.7.2010

KB3 $\frac{3}{8} \times 2\frac{1}{4}$

282505



Base Material		Solid Concrete	Grout-Filled Block
Min. h_{nom}	[in.]	1 $\frac{5}{8}$	1 $\frac{5}{8}$
Min. h_0	[in.]	$h_{nom} + \frac{1}{4}$	$h_{nom} + \frac{1}{4}$
h_{min}	[in.]	4 or $h_0 + 1\frac{1}{4}$ ¹⁾	3 or $h_{nom} \times 1,5$ ¹⁾
T_{inst}	[ft-lb]	20	15

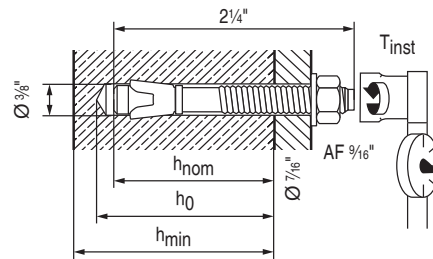
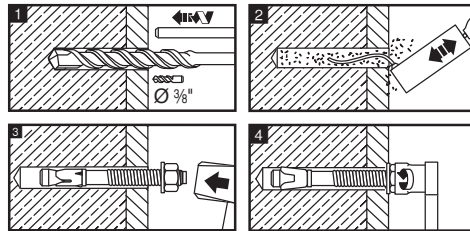
1) whichever is greater

Use only carbide-flipped masonry drill bits complying with ANSI B212.15-1994

Hilti Inc. (US), www.us.hilti.com, 1 800 879 8000
Hilti Co. (Canada), www.ca.hilti.com, 1 800 363 4458

283470 IFU
25.6.2010

KB3 $\frac{3}{8}$ x $2\frac{1}{4}$ R.C. # 283470



Base Material		Solid Concrete	Grout-Filled Block
Min. h_{nom}	[in.]	1 $\frac{5}{8}$	1 $\frac{5}{8}$
Min. h_0	[in.]	$h_{nom} + \frac{1}{4}$	$h_{nom} + \frac{1}{4}$
h_{min}	[in.]	4 or $h_0 + 1\frac{1}{4}$ ¹⁾	3 or $h_{nom} \times 1,5$ ¹⁾
T_{inst}	[ft-lb]	20	15

1) whichever is greater

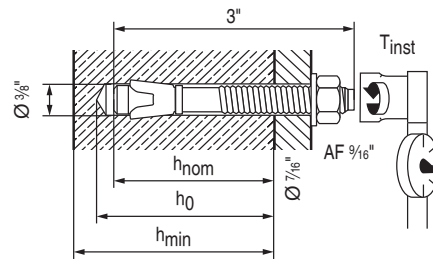
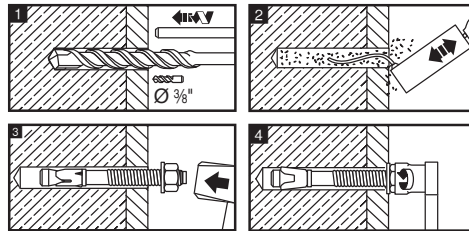
Use only carbide-tipped masonry drill bits complying with ANSI B212.15-1994

Hilti Inc. (US), www.us.hilti.com, 1 800 879 8000
Hilti Co. (Canada), www.ca.hilti.com, 1 800 363 4458

282522 IFU
13.7.2010

KB3 $\frac{3}{8} \times 3$

282522



Base Material		Solid Concrete	Grout-Filled Block
Min. h_{nom}	[in.]	2%	1%
Min. h_0	[in.]	$h_{nom} + \frac{1}{4}$	$h_{nom} + \frac{1}{4}$
h_{min}	[in.]	4 or $h_0 + 1\frac{1}{4}$ ¹⁾	3 or $h_{nom} \times 1,5$ ¹⁾
T_{inst}	[ft-lb]	20	15

1) whichever is greater

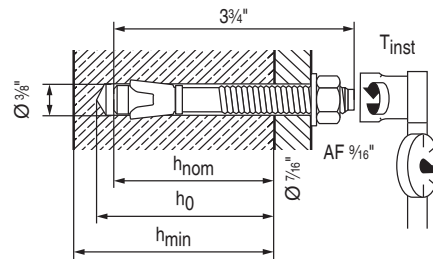
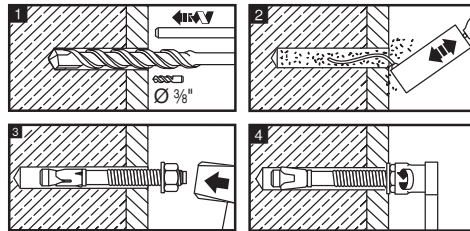
Use only carbide-tipped masonry drill bits complying with ANSI B212.15-1994

Hilti Inc. (US), www.us.hilti.com, 1 800 879 8000
Hilti Co. (Canada), www.ca.hilti.com, 1 800 363 4458

282523 IFU
13.7.2010

KB3 $\frac{3}{8} \times 3\frac{3}{4}$

282523



Base Material		Solid Concrete	Grout-Filled Block
Min. h_{nom}	[in.]	2%	1%
Min. h_0	[in.]	$h_{nom} + \frac{1}{4}$	$h_{nom} + \frac{1}{4}$
h_{min}	[in.]	4 or $h_0 + 1\frac{1}{4}$ ¹⁾	3 or $h_{nom} \times 1,5$ ¹⁾
T_{inst}	[ft-lb]	20	15

1) whichever is greater

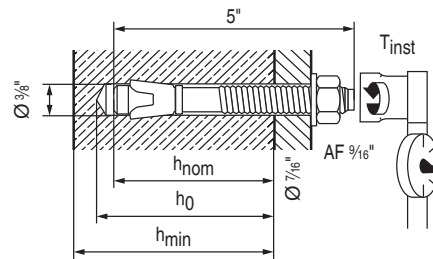
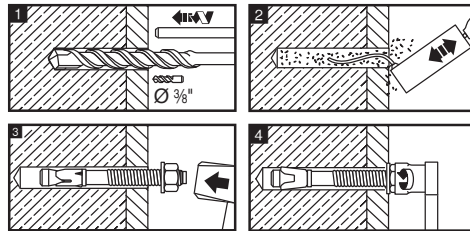
Hilti Inc. (US), www.us.hilti.com, 1 800 879 8000
Hilti Co. (Canada), www.ca.hilti.com, 1 800 363 4458

Use only carbide-tipped masonry drill bits complying with ANSI B212.15-1994

282524 IFU
13.7.2010

KB3 $\frac{3}{8} \times 5$

282524



Base Material		Solid Concrete	Grout-Filled Block
Min. h_{nom}	[in.]	2%	1%
Min. h_0	[in.]	$h_{nom} + \frac{1}{4}$	$h_{nom} + \frac{1}{4}$
h_{min}	[in.]	4 or $h_0 + \frac{1}{4}$ ¹⁾	3 or $h_{nom} \times 1,5$ ¹⁾
T_{inst}	[ft-lb]	20	15

1) whichever is greater

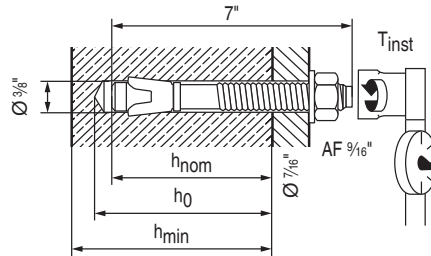
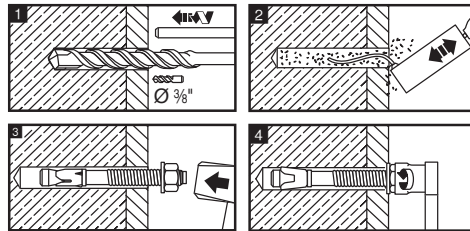
Use only carbide-tipped masonry drill bits complying with ANSI B212.15-1994

Hilti Inc. (US), www.us.hilti.com, 1 800 879 8000
Hilti Co. (Canada), www.ca.hilti.com, 1 800 363 4458

282525 IFU
24.6.2010

KB3 $\frac{3}{8} \times 7$

282525



Base Material	Solid Concrete	Grout-Filled Block
Approval	AC193, ESR-2302	AC01, ESR-1385
Min. h_{nom} [in.]	2%	1%
Min. h_0 [in.]	$h_{nom} + \frac{1}{4}$	$h_{nom} + \frac{1}{4}$
h_{min} [in.]	4 or $h_0 + \frac{1}{4}$ ¹⁾	3 or $h_{nom} \times 1,5$ ¹⁾
T_{inst} [ft-lb]	20	15

1) whichever is greater

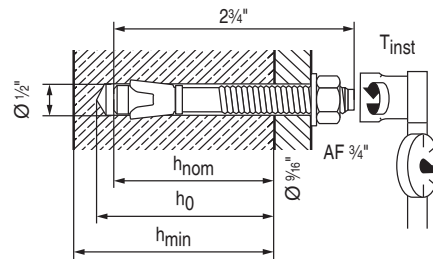
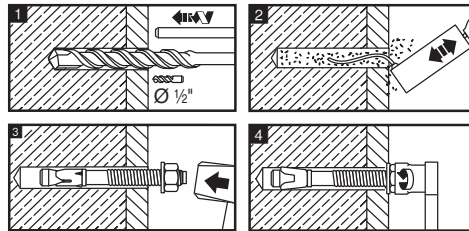
Hilti Inc. (US), www.us.hilti.com, 1 800 879 8000
Hilti Co. (Canada), www.ca.hilti.com, 1 800 363 4458

Use only carbide-tipped masonry drill bits complying with ANSI B212.15-1994

282509 IFU
13.7.2010

KB3 1/2 x 2 3/4

282509



Base Material		Solid Concrete	Grout-Filled Block
Min. h_{nom}	[in.]	1 3/4	2 1/4
Min. h_0	[in.]	$h_{nom} + 3/8$	$h_{nom} + 3/8$
h_{min}	[in.]	4 or $h_0 + 1 1/4$ ¹⁾	3 or $h_{nom} \times 1,5$ ¹⁾
T_{inst}	[ft-lb]	40	25

1) whichever is greater

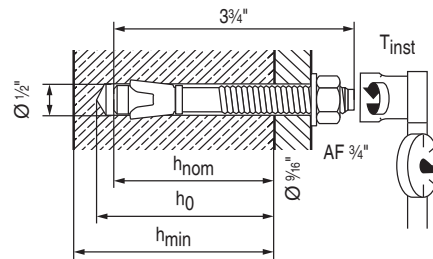
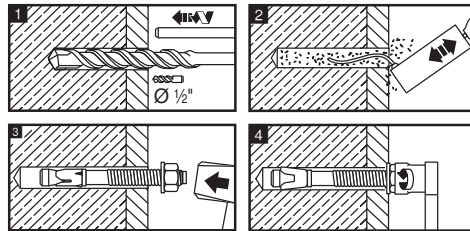
Use only carbide-tipped masonry drill bits complying with ANSI B212.15-1994

Hilti Inc. (US), www.us.hilti.com, 1 800 879 8000
Hilti Co. (Canada), www.ca.hilti.com, 1 800 363 4458

282526 IFU
13.7.2010

KB3 1/2 x 3 3/4

282526



Base Material		Solid Concrete	Grout-Filled Block
Min. h_{nom}	[in.]	2 1/4	2 1/4
Min. h_0	[in.]	$h_{nom} + 3/8$	$h_{nom} + 3/8$
h_{min}	[in.]	4 or $h_0 + 1 1/4$ ¹⁾	3 or $h_{nom} \times 1,5$ ¹⁾
T_{inst}	[ft-lb]	40	25

1) whichever is greater

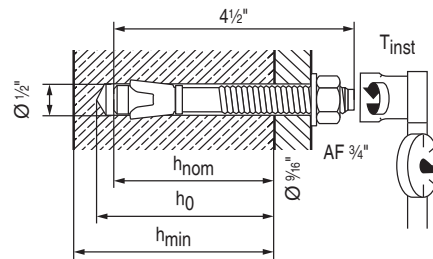
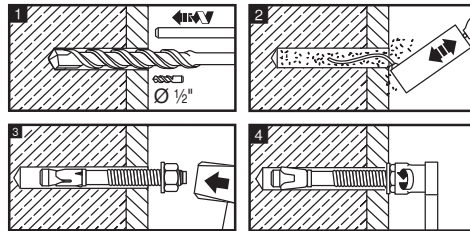
Use only carbide-tipped masonry drill bits complying with ANSI B212.15-1994

Hilti Inc. (US), www.us.hilti.com, 1 800 879 8000
Hilti Co. (Canada), www.ca.hilti.com, 1 800 363 4458

282527 IFU
13.7.2010

KB3 1/2 x 4 1/2

282527



Base Material		Solid Concrete	Grout-Filled Block
Min. h_{nom}	[in.]	2 1/4	2 1/4
Min. h_0	[in.]	$h_{nom} + 3/8$	$h_{nom} + 3/8$
h_{min}	[in.]	4 or $h_0 + 1 1/4$ ¹⁾	3 or $h_{nom} \times 1,5$ ¹⁾
T_{inst}	[ft-lb]	40	25

1) whichever is greater

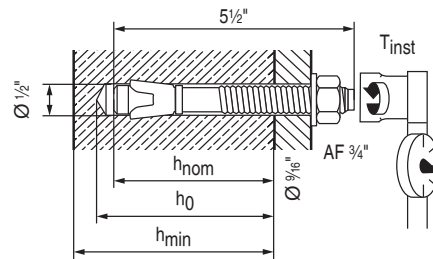
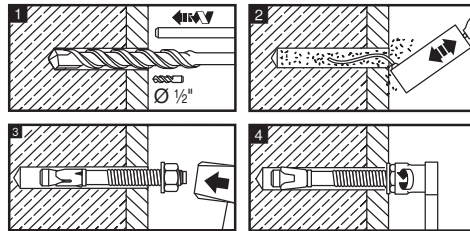
Use only carbide-tipped masonry drill bits complying with ANSI B212.15-1994

Hilti Inc. (US), www.us.hilti.com, 1 800 879 8000
Hilti Co. (Canada), www.ca.hilti.com, 1 800 363 4458

282528 IFU
13.7.2010

KB3 1/2 x 5 1/2

282528



Base Material		Solid Concrete	Grout-Filled Block
Min. h_{nom}	[in.]	2 1/4	2 1/4
Min. h_0	[in.]	$h_{nom} + 3/8$	$h_{nom} + 3/8$
h_{min}	[in.]	4 or $h_0 + 1/4$ ¹⁾	3 or $h_{nom} \times 1,5$ ¹⁾
T_{inst}	[ft-lb]	40	25

1) whichever is greater

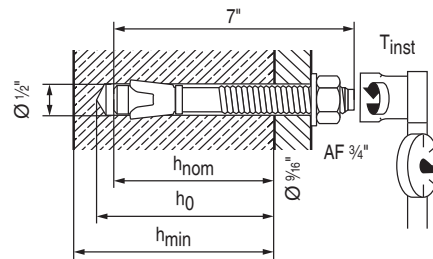
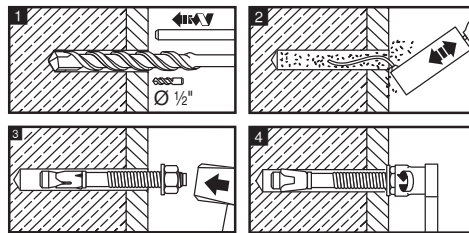
Use only carbide-tipped masonry drill bits complying with ANSI B212.15-1994

Hilti Inc. (US), www.us.hilti.com, 1 800 879 8000
Hilti Co. (Canada), www.ca.hilti.com, 1 800 363 4458

282529 IFU
13.7.2010

KB3 1/2 x 7

282529



Base Material		Solid Concrete	Grout-Filled Block
Min. h_{nom}	[in.]	2 1/4	2 1/4
Min. h_0	[in.]	$h_{nom} + 3/8$	$h_{nom} + 3/8$
h_{min}	[in.]	4 or $h_0 + 1 1/4$ ¹⁾	3 or $h_{nom} \times 1,5$ ¹⁾
T_{inst}	[ft-lb]	40	25

1) whichever is greater

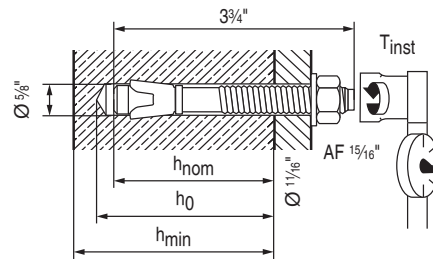
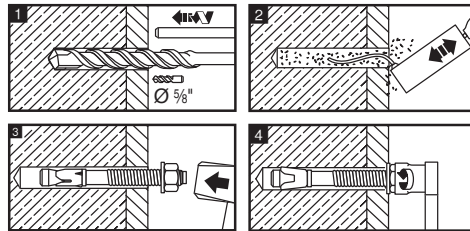
Use only carbide-tipped masonry drill bits complying with ANSI B212.15-1994

Hilti Inc. (US), www.us.hilti.com, 1 800 879 8000
Hilti Co. (Canada), www.ca.hilti.com, 1 800 363 4458

282513 IFU
13.7.2010

KB3 $\frac{5}{8} \times 3\frac{3}{4}$

282513



Base Material		Solid Concrete	Grout-Filled Block
Min. h_{nom}	[in.]	2 $\frac{3}{4}$	2 $\frac{3}{4}$
Min. h_0	[in.]	$h_{nom} + \frac{3}{8}$	$h_{nom} + \frac{3}{8}$
h_{min}	[in.]	5 or $h_0 + 1\frac{1}{4}$ ¹⁾	3 or $h_{nom} \times 1,5$ ¹⁾
T_{inst}	[ft-lb]	60	65

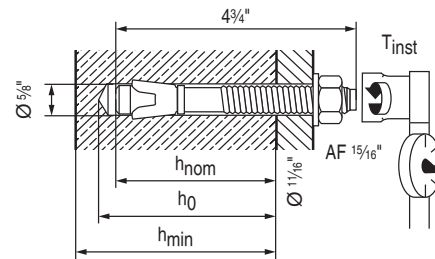
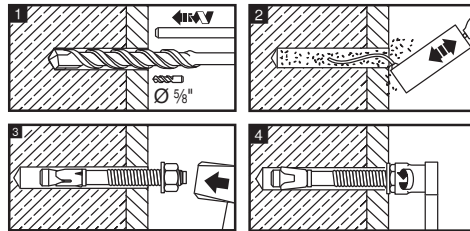
1) whichever is greater

Use only carbide-tipped masonry drill bits complying with ANSI B212.15-1994

Hilti Inc. (US), www.us.hilti.com, 1 800 879 8000
Hilti Co. (Canada), www.ca.hilti.com, 1 800 363 4458

206661 IFU
 13.7.2010

KB3 $\frac{5}{8} \times 4\frac{3}{4}$ # 206661



Base Material		Solid Concrete	Grout-Filled Block
Min. h_{nom}	[in.]	$3\frac{1}{2}$	$2\frac{3}{4}$
Min. h_0	[in.]	$h_{nom} + \frac{3}{8}$	$h_{nom} + \frac{3}{8}$
h_{min}	[in.]	5 or $h_0 + 1\frac{1}{4}$ ¹⁾	3 or $h_{nom} \times 1,5$ ¹⁾
T_{inst}	[ft-lb]	60	65

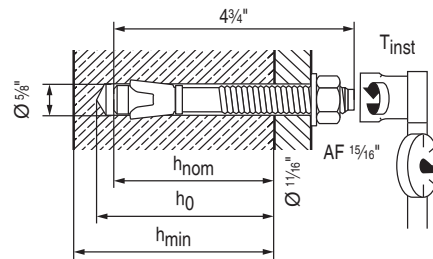
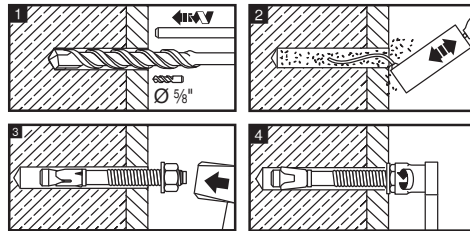
1) whichever is greater

Use only carbide-tipped masonry drill bits complying with ANSI B212.15-1994

Hilti Inc. (US), www.us.hilti.com, 1 800 879 8000
 Hilti Co. (Canada), www.ca.hilti.com, 1 800 363 4458

282530 IFU
13.7.2010

KB3 $\frac{5}{8} \times 4\frac{3}{4}$ # 282530



Base Material		Solid Concrete	Grout-Filled Block
Min. h_{nom}	[in.]	$3\frac{1}{2}$	$2\frac{3}{4}$
Min. h_0	[in.]	$h_{nom} + \frac{3}{8}$	$h_{nom} + \frac{3}{8}$
h_{min}	[in.]	5 or $h_0 + 1\frac{1}{4}$ ¹⁾	3 or $h_{nom} \times 1,5$ ¹⁾
T_{inst}	[ft-lb]	60	65

1) whichever is greater

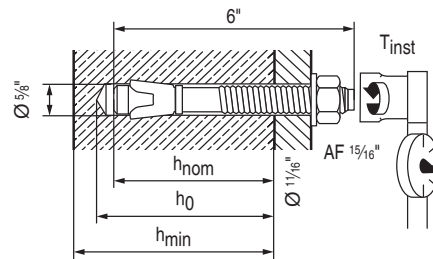
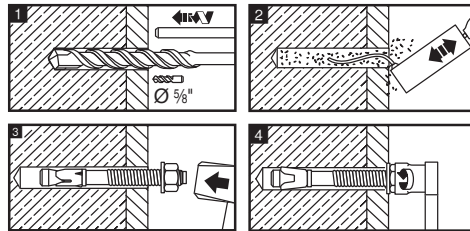
Use only carbide-tipped masonry drill bits complying with ANSI B212.15-1994

Hilti Inc. (US), www.us.hilti.com, 1 800 879 8000
Hilti Co. (Canada), www.ca.hilti.com, 1 800 363 4458

282531 IFU
13.7.2010

KB3 5/8 x 6

282531



Base Material		Solid Concrete	Grout-Filled Block
Min. h_{nom}	[in.]	3½	2¾
Min. h_0	[in.]	$h_{nom} + \frac{3}{8}$	$h_{nom} + \frac{3}{8}$
h_{min}	[in.]	5 or $h_0 + 1\frac{1}{4}$ ¹⁾	3 or $h_{nom} \times 1,5$ ¹⁾
T_{inst}	[ft-lb]	60	65

1) whichever is greater

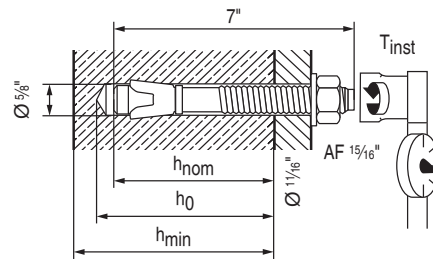
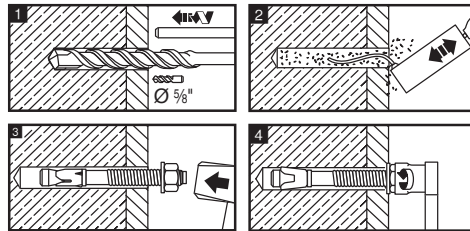
Use only carbide-tipped masonry drill bits complying with ANSI B212.15-1994

Hilti Inc. (US), www.us.hilti.com, 1 800 879 8000
Hilti Co. (Canada), www.ca.hilti.com, 1 800 363 4458

282532 IFU
13.7.2010

KB3 5/8 x 7

282532



Base Material		Solid Concrete	Grout-Filled Block
Min. h_{nom}	[in.]	3 1/2	2 3/4
Min. h_0	[in.]	$h_{nom} + 3/8$	$h_{nom} + 3/8$
h_{min}	[in.]	5 or $h_0 + 1 1/4$ ¹⁾	3 or $h_{nom} \times 1,5$ ¹⁾
T_{inst}	[ft-lb]	60	65

1) whichever is greater

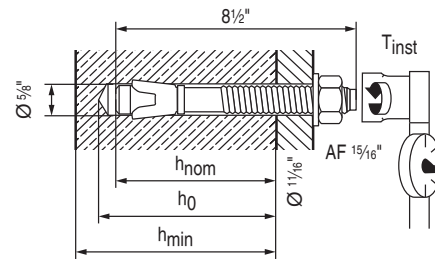
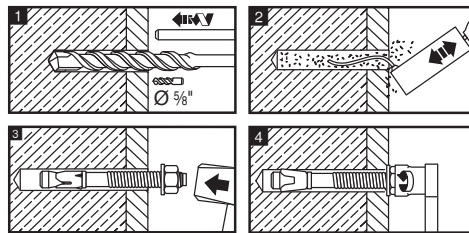
Use only carbide-tipped masonry drill bits complying with ANSI B212.15-1994

Hilti Inc. (US), www.us.hilti.com, 1 800 879 8000
Hilti Co. (Canada), www.ca.hilti.com, 1 800 363 4458

282533 IFU
13.7.2010

KB3 $\frac{5}{8} \times 8\frac{1}{2}$

282533



Base Material		Solid Concrete	Grout-Filled Block
Min. h_{nom}	[in.]	$3\frac{1}{2}$	$2\frac{3}{4}$
Min. h_0	[in.]	$h_{nom} + \frac{3}{8}$	$h_{nom} + \frac{3}{8}$
h_{min}	[in.]	5 or $h_0 + 1\frac{1}{4}$ ¹⁾	3 or $h_{nom} \times 1,5$ ¹⁾
T_{inst}	[ft-lb]	60	65

1) whichever is greater

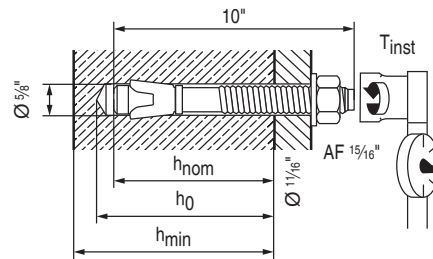
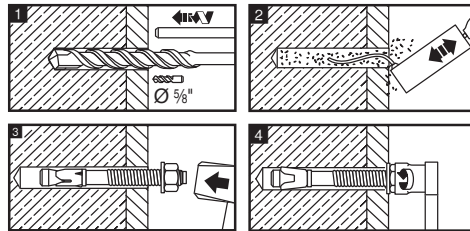
Use only carbide-tipped masonry drill bits complying with ANSI B212.15-1994

Hilti Inc. (US), www.us.hilti.com, 1 800 879 8000
Hilti Co. (Canada), www.ca.hilti.com, 1 800 363 4458

282534 IFU
13.7.2010

KB3 5/8 x 10

282534



Base Material		Solid Concrete	Grout-Filled Block
Min. h_{nom}	[in.]	3½	2¾
Min. h_0	[in.]	$h_{nom} + \frac{3}{8}$	$h_{nom} + \frac{3}{8}$
h_{min}	[in.]	5 or $h_0 + 1\frac{1}{4}$ ¹⁾	3 or $h_{nom} \times 1,5$ ¹⁾
T_{inst}	[ft-lb]	60	65

1) whichever is greater

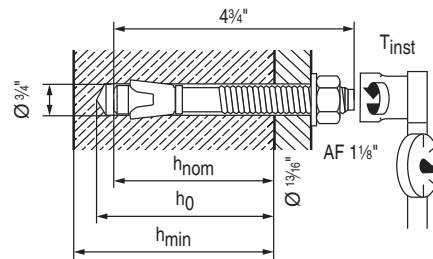
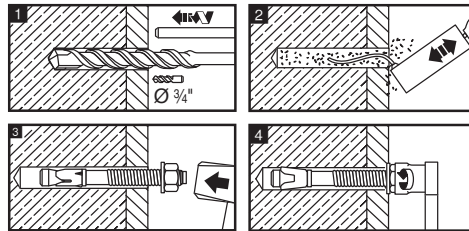
Use only carbide-tipped masonry drill bits complying with ANSI B212.15-1994

Hilti Inc. (US), www.us.hilti.com, 1 800 879 8000
Hilti Co. (Canada), www.ca.hilti.com, 1 800 363 4458

282535 IFU
13.7.2010

KB3 $\frac{3}{4} \times 4\frac{3}{4}$

282535



Base Material		Solid Concrete	Grout-Filled Block
Min. h_{nom}	[in.]	3%	$\frac{3}{4}$
Min. h_0	[in.]	$h_{nom} + \frac{1}{4}$	$h_{nom} + \frac{1}{4}$
h_{min}	[in.]	6 or $h_0 + \frac{1}{4}$ ¹⁾	3 or $h_{nom} \times 1,5$ ¹⁾
T_{inst}	[ft-lb]	110	120

1) whichever is greater

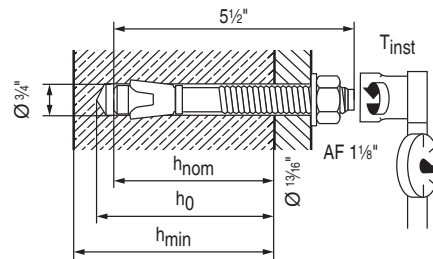
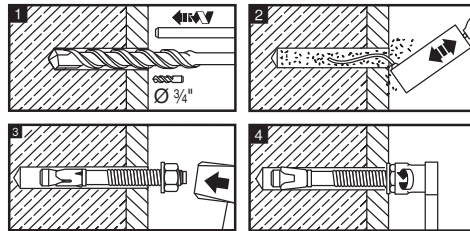
Use only carbide-tipped masonry drill bits complying with ANSI B212.15-1994

Hilti Inc. (US), www.us.hilti.com, 1 800 879 8000
Hilti Co. (Canada), www.ca.hilti.com, 1 800 363 4458

282518 IFU
13.7.2010

KB3 $\frac{3}{4} \times 5\frac{1}{2}$

282518



Base Material		Solid Concrete	Grout-Filled Block
Min. h_{nom}	[in.]	4 $\frac{1}{4}$	3 $\frac{1}{4}$
Min. h_0	[in.]	$h_{nom} + \frac{1}{4}$	$h_{nom} + \frac{1}{4}$
h_{min}	[in.]	6 or $h_0 + 1\frac{1}{4}$ ¹⁾	3 or $h_{nom} \times 1,5$ ¹⁾
T_{inst}	[ft-lb]	110	120

1) whichever is greater

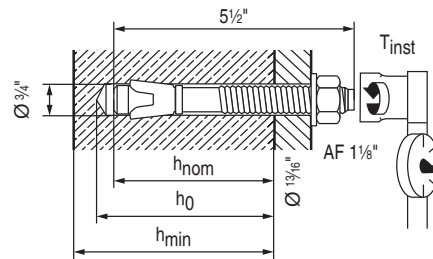
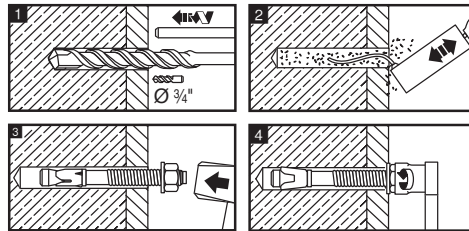
Use only carbide-tipped masonry drill bits complying with ANSI B212.15-1994

Hilti Inc. (US), www.us.hilti.com, 1 800 879 8000
Hilti Co. (Canada), www.ca.hilti.com, 1 800 363 4458

282536 IFU
13.7.2010

KB3 $\frac{3}{4} \times 5\frac{1}{2}$

282536



Base Material		Solid Concrete	Grout-Filled Block
Min. h_{nom}	[in.]	$4\frac{1}{4}$	$3\frac{1}{4}$
Min. h_0	[in.]	$h_{nom} + \frac{1}{4}$	$h_{nom} + \frac{1}{4}$
h_{min}	[in.]	6 or $h_0 + 1\frac{1}{4}$ ¹⁾	3 or $h_{nom} \times 1,5$ ¹⁾
T_{inst}	[ft-lb]	110	120

1) whichever is greater

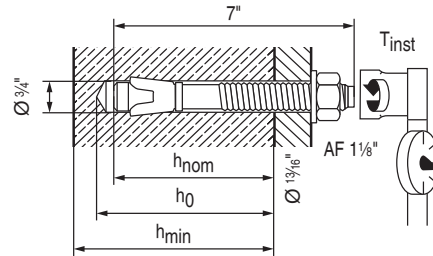
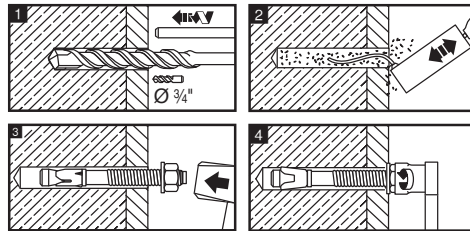
Use only carbide-tipped masonry drill bits complying with ANSI B212.15-1994

Hilti Inc. (US), www.us.hilti.com, 1 800 879 8000
Hilti Co. (Canada), www.ca.hilti.com, 1 800 363 4458

282537 IFU
13.7.2010

KB3 3/4 x 7

282537



Base Material		Solid Concrete	Grout-Filled Block
Min. h_{nom}	[in.]	4 1/4	3 1/4
Min. h_0	[in.]	$h_{nom} + 1/4$	$h_{nom} + 1/4$
h_{min}	[in.]	6 or $h_0 + 1 1/4$ ¹⁾	3 or $h_{nom} \times 1,5$ ¹⁾
T_{inst}	[ft-lb]	110	120

1) whichever is greater

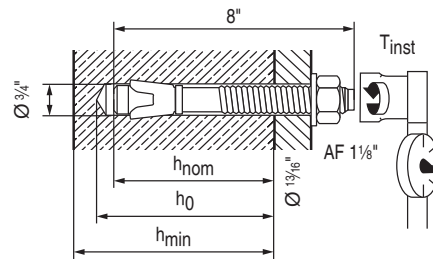
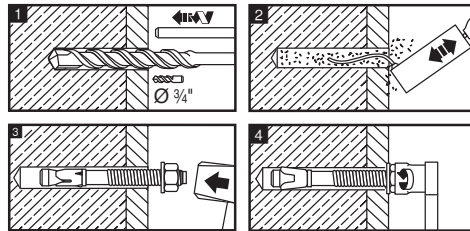
Use only carbide-tipped masonry drill bits complying with ANSI B212.15-1994

Hilti Inc. (US), www.us.hilti.com, 1 800 879 8000
Hilti Co. (Canada), www.ca.hilti.com, 1 800 363 4458

282520 IFU
13.7.2010

KB3 3/4 x 8

282520



Base Material		Solid Concrete	Grout-Filled Block
Min. h_{nom}	[in.]	4 1/4	3 1/4
Min. h_0	[in.]	$h_{nom} + 1/4$	$h_{nom} + 1/4$
h_{min}	[in.]	6 or $h_0 + 1 1/4$ ¹⁾	3 or $h_{nom} \times 1,5$ ¹⁾
T_{inst}	[ft-lb]	110	120

1) whichever is greater

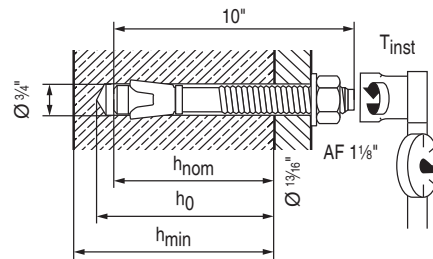
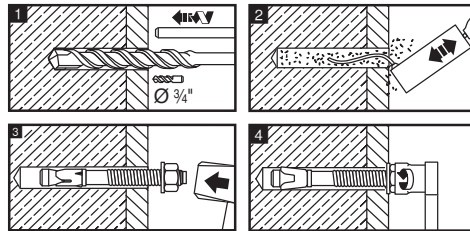
Use only carbide-tipped masonry drill bits complying with ANSI B212.15-1994

Hilti Inc. (US), www.us.hilti.com, 1 800 879 8000
Hilti Co. (Canada), www.ca.hilti.com, 1 800 363 4458

282538 IFU
13.7.2010

KB3 3/4 x 10

282538



Base Material		Solid Concrete	Grout-Filled Block
Min. h_{nom}	[in.]	4 1/4	3 1/4
Min. h_0	[in.]	$h_{nom} + 1/4$	$h_{nom} + 1/4$
h_{min}	[in.]	6 or $h_0 + 1 1/4$ ¹⁾	3 or $h_{nom} \times 1,5$ ¹⁾
T_{inst}	[ft-lb]	110	120

1) whichever is greater

Use only carbide-tipped masonry drill bits complying with ANSI B212.15-1994

Hilti Inc. (US), www.us.hilti.com, 1 800 879 8000
Hilti Co. (Canada), www.ca.hilti.com, 1 800 363 4458