

## WARNING AND CAUTIONS

**CAUTION:** Read instructions carefully and turn electricity off at main circuit breaker panel before beginning installation.

**WARNING:** Follow instructions carefully to assure full compliance with local state, provincial and/or national requirements. If there are any questions, contact a Qualified Electrical Contractor.

**WARNING:** Risk of fire or electric shock. Install this kit only in the Recessed Cans or 4" Junction Boxes per the dimensions shown.

**WARNING:** To prevent wiring damage or abrasion, do not expose wiring to edges of sheet metal or other sharp objects.

**CAUTION:** Risk of fire. Consult a qualified Electrician to ensure correct branch circuit conductor.

**NOTE:** This product is designed to operate with most standard incandescent or low voltage electronic dimmer switches. Results may vary. For recommended dimmers, consult product specification sheet for more details.

**NOTE:** SUITABLE FOR WET LOCATIONS IN COVERED CEILINGS.

**NOTE:** Always install with ambient temperatures specified on the product specification sheet. 5 year warranty with product registration.

Do not make or alter any open holes in an enclosure of wiring or electrical components during kit installation.

THIS PRODUCT MUST BE INSTALLED IN ACCORDANCE WITH THE APPLICABLE INSTALLATION CODE BY A PERSON FAMILIAR WITH THE CONSTRUCTION AND OPERATION OF THE PRODUCT AND THE HAZARDS INVOLVED.

### KEEP THESE INSTRUCTIONS

#### 4" RECESSED MOUNTING WITH TORSION CLIPS

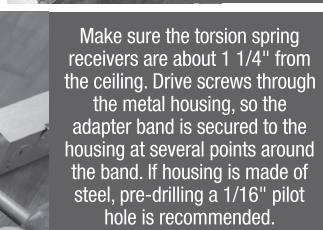
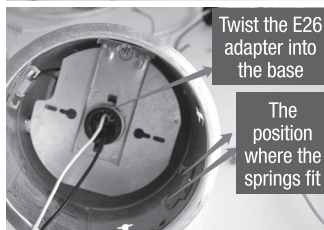
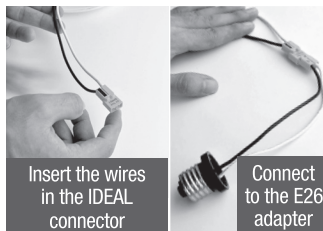
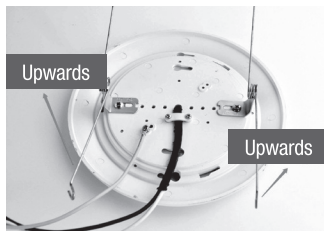
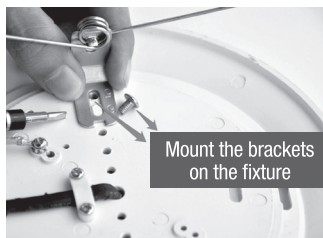


Use supplied screws to connect clips

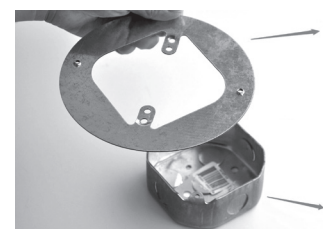
Connect fixture wire to the adapter



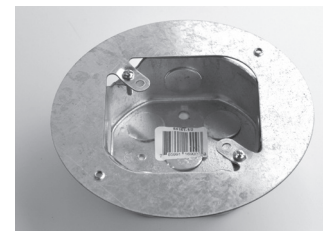
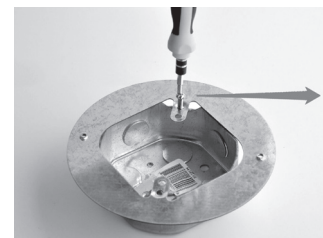
#### 6" RECESSED MOUNTING WITH TORSION SPRINGS



#### 4" & 6" JUNCTION BOX MOUNTING



Align the mounting plate holes with the junction box



## WARNING AND CAUTIONS

**WARNING:** Risk of fire or electric shock. Do not alter, relocate or remove wiring, lampholders, power supply or any other electrical component.

**WARNING:** Risk of fire or electric shock. LED retrofit kit installation requires knowledge of the construction and operation of the luminaires electrical systems and the hazard involved. If not qualified, do not attempt installation. Contact a qualified electrician.

**WARNING:** Risk of fire or electric shock. Install this kit only in the luminaires that has the construction features and dimensions in photographs and/or drawing.

**WARNING:** Do not make or alter any open holes in an enclosure of wiring or electrical components during installation.

Suitable for use with luminaires with a minimum of 75°C supply conductors.

The retrofit kit is accepted as a component of a luminaire where the suitability of the combination shall be determined by CSA/UL or authorities having jurisdiction.

**NOTE:** THIS UNIT IS DESIGNED TO FIT 4" AND 6" RECESSED HOUSINGS. THE ILLUSTRATION BELOW SHOWS THE HOLE LOCATION FOR EACH SIZE HOUSING. ATTACH THE SPRING CLIPS TO THE BRACKET AS NOTED. THE SPRING CLIPS ARE DESIGNED TO WORK WITH MOST TOLERANCES OF EACH SIZE HOUSING. SEE THE CHART BELOW FOR "MINIMUM" AND/OR "MAXIMUM" DIMENSIONS. THE VIEWS BELOW SHOW HOW THE SPRING CLIPS SHOULD LOOK AFTER BEING MOUNTED TO THE BRACKET. BE SURE TO TIGHTEN SCREWS SECURELY.

## Also available from NSL

### Thin-line LED Down Lights

Designed for retrofit and new construction, damp and wet locations, Thin-line Down Lights are a versatile and affordable choice for countless applications. Available in 5 sizes.



### LV-DL Series

The LV-DL Series Down Lights are easy to install and can replace traditional MR16 and PAR ceiling fixtures widely used indoors, in residential homes and commercial applications such as retail, hotel and museums.



LV-DL8 Series



LV-DL13 Series

## INSTALLATION AND SAFETY INSTRUCTIONS

# Surface/Recessed LED Down Light



LED Down Light is a simple yet beautiful solution for flush mount and recessed applications without requiring the use of a recessed can.

### Applications

- Lobbies
- Hallways
- Banquet halls
- Elevators
- Stairways
- Retail
- Restaurants
- Residential

**NSL**  
www.nslusa.com

**NSL**

