

# 65™ FUSED CONNECTOR KIT

- THIS KIT CONTAINS:
- 1 Line side housing
  - 1 Load side housing
  - 2 Socket contacts
  - 1 Packet of lubricant
  - 1 Assembly dowel

## INSTALLATION INSTRUCTIONS

**CAUTION - Identify LINE and LOAD sides of wiring with correct molded connector bodies before installing. (Line Side has double ridge, Load Side has single ridge, see below). Use type U or LC contacts on copper wire only, type UA or LA contacts on aluminum wire only.**

**MAXIMUM 75°C ( 167°F) OPERATING TEMP. 600 VOLT 1/10-30 AMP**

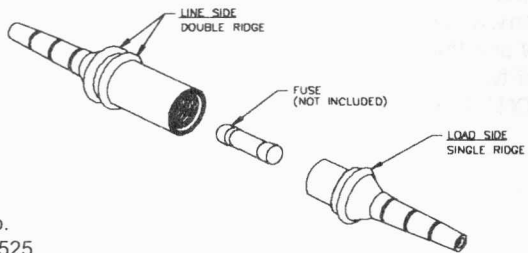
1. Measure or determine the overall diameter of cable insulation, and from diagram on other side, select corresponding section on molded sleeve. Cut off remaining sections of housing to size required. Example: If cable O.D. is 0.270", it falls within the "C" range - cut off at notch between "B" and "C" as shown in cutaway view of assembled kit on back of sheet.
2. **Thoroughly clean** approximately 8" of Line Side cable to be inserted. Apply 1/4 of lubricant packet (do not substitute) to cable and small hole in the Line Side receptacle housing.
3. Insert cable through small hole in housing and push through sufficiently to allow for stripping of insulation.
4. Strip wires 3/4 inch for wire sizes 14 AWG through 10 AWG, 3/8 inch for wire sizes 8 AWG through 2 AWG (DO NOT PENCIL INSULATION). Application of oxidation inhibitor such as Noalox® required on properly cleaned aluminum conductors. Crimp on the Line Side socket contact. Make sure the stripped wire does not go beyond the end of the crimp barrel and enter the fuse socket area. (Refer to the table below for correct tool & die.) Avoid getting lubricating in the socket contacts.

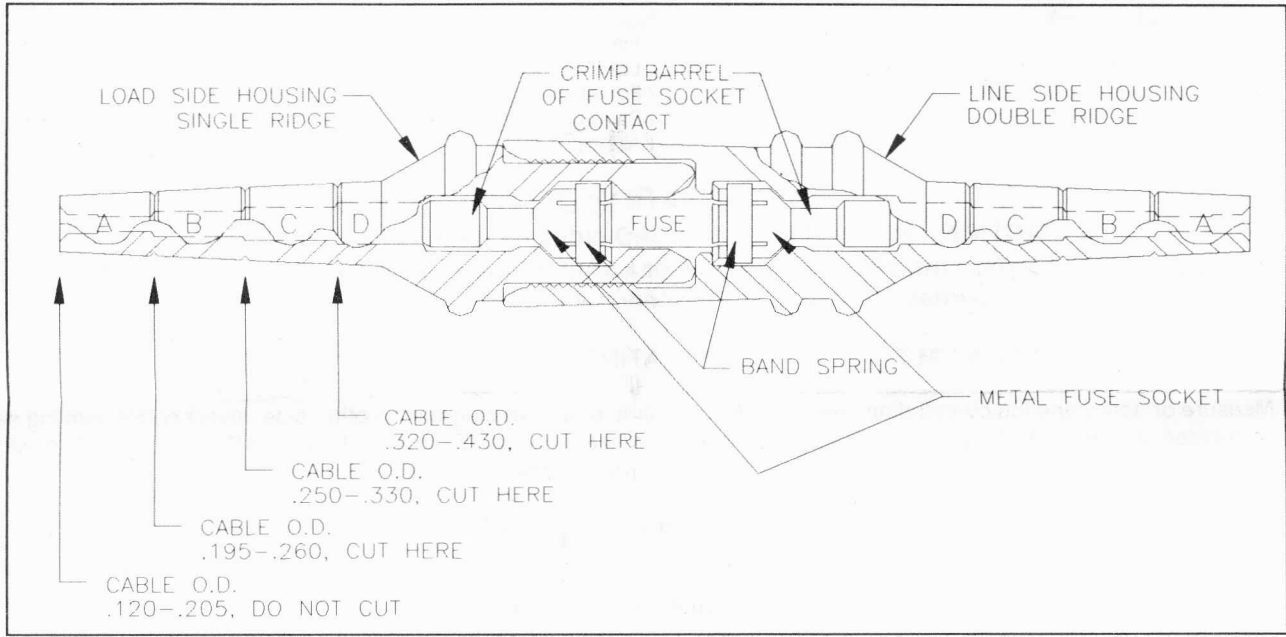


UNIVERSAL CONTACT U or UA			
CRIMP AREA	CONDUCTOR SIZE IN AWG		RECOMMENDED CRIMP TOOLS & DIES OR DIMENSIONAL EQUIVALENT
	SOLID	STRANDED	
A	14, 12	14	IDEAL No. 30-429 "BARE"
	10, 8	10, 12	IDEAL No. 30-429 "BARE"
B	6	8	IDEAL No. 30-425 large crimp area
	4	6	IDEAL No. 30-425 large crimp area
LARGE CONTACT LC or LA			
L	2	4	IDEAL No. 30-425 large crimp area
	-	2	IDEAL No. 30-425 large crimp area

NOTE: ALUMINUM PARTS HAVE A SCRIBED LINE ON BARREL DIAMETER- OXIDATION INHIBITOR REQD.

5. Place wood dowel in socket. Place free end of dowel against firm surface and push housing forward until contact snaps into locked position in the housing. Wipe off any excess lubricant.
6. Repeat above steps with Load Side Housing. For ease of assembly, first apply a small amount of lubricant to the openings in the housing for the socket contact.
7. Insert appropriately rated 1-1/2" x 13/32" fuse, 600 Volt - 30 Amp Max. (Do not use glass tube or indicating fuse type), in the Load Side Housing. **CAUTION: WHEN THE FUSE IS FULLY SEATED, THE END OF IT WILL PROTRUDE NO MORE THAN 5/8" PAST THE END OF THE HOUSING. DO NOT APPLY LUBRICANT ON THE FUSE.**
8. Plug the load side and line side housings together. If less breakaway force is desired, lubricate mating rubber surfaces with grease supplied. **CAUTION: WHEN PROPERLY MATED, THE SEAM BETWEEN THE HOUSINGS SHOULD NOT EXCEED 1/32 INCH.**





**EXCERPTS OF 1996 US NEC TABLES 5 & 5A  
DIMENSIONS OF INSULATED CONDUCTORS**

SIZE in AWG	APPROX. DIAMETER IN INCHES FOR INSULATION:						APPROX. DIAMETER IN INCHES FOR COMPACT AL CONDUCTORS:		
	RH	RHH RHW, RHW-2	THW, THW-2, THHW	TW	THHN, THWN, THWN-2	XHHW XHHW-2	THW THHW	THHN	XHHW
14	.163	.193	.163	.133	.111	.133	-	-	-
12	.182	.212	.182	.152	.130	.152	-	-	-
10	.236	.236	.206	.176	.164	.176	-	-	-
8	.326	.326	.266	.236	.216	.236	.255	-	.224
6	.364	.364	.304	.304	.254	.274	.290	.240	.260
4	.412	.412	.352	.352	.324	.322	.335	.305	.305
3	.440	.440	.380	.380	.352	.350	-	-	-
2	.472	.472	.412	.412	.384	.382	.390	.360	.360

National Electric Code ©, Copyright © 1996, National Fire Protection Association, Quincy MA 02269

**WARRANTY**

All statements, technical information and recommendations contained herein are based on tests we believe to be reliable, but the accuracy or completeness thereof is not guaranteed, and the following is made in lieu of all warranties, expressed or implied.

BUCHANAN CONSTRUCTION PRODUCTS, INC. (BCP, INC.) products are warranted to perform within recommended operational ratings when installed and used in accordance with applicable operating instructions. BCP, INC. liability is limited to replacement of component parts designed and manufactured by BCP, INC. which are proved to be defective in workmanship or material. In adjustment of any claims inspection of parts and the application will be required. This warranty is effective for two (2) years from the date of shipment by BUCHANAN CONSTRUCTION PRODUCTS, INC.



**IDEAL INDUSTRIES, INC.**  
Sycamore, IL 60178 • USA  
1-800-304-3578 Customer Assistance