

**INSTALLATION PROCEDURES**

- **Housing can NOT be installed in direct contact with insulation.** Do not install insulation within 3" of fixture sides or wiring compartment, nor above fixture in such a manner to entrap heat. (Figure 1)
- Using supplied template, scribe circle on ceiling in desired location and accurately cut hole in ceiling.
- Make all necessary electrical connections (See "Electrical Connection").
- With clips seated properly in can (Figure 2), insert housing through ceiling opening, junction box first, until it is flush with ceiling.
- Hold fixture up against ceiling and push clip through housing slot.
- To lock clip into place, push flat portion against side of can in an upward direction. (Figure 3A) To complete installation, push up clip with screwdriver until it snaps into place. To release, pull down on clip. (Figure 3B)

**ELECTRICAL CONNECTION:**

- Provide electrical service with flexible cable only. Pass cable through ceiling opening and wire fixture in accordance with NEC or local electrical code.
- Remove the junction box cover.
- Follow the proper wiring diagram for the electrical/dimming option (PAGE 2). Ensure wiring is the correct voltage for the fixture – either 120V, 277V or 347V.
- **Wiring Diagram 1:** 12D, 27D, 34D2, 12D6, 27D6, 12D8, 27D8 (Triac, ELV or 0-10V). Note: When dimming with 0-10V, Class 1 wiring (300V wiring inside conduit) is required. Please consult factory for additional details.
- **Wiring Diagram 2:** 12D3 (Lutron HiLume)
- **Wiring Diagram 3:** 12D4, 27D4 (Lutron EcoSystem)
- **Wiring Diagram 4:** 12D7, 27D7, 12D9, 27D9 (DALI)
- **Wiring Diagram 5:** 12DMX, 27DMX, MVDMX (DMX)
- Close junction box cover after wiring. Ensure all wires are safely within junction box before closing.

**TRIM AND LED MODULE INSTALLATION:**

- Remove protective cover from LED Module.
- If using a decorative trim assembly with separate trim ring, place ring on reflector prior to assembly.
- Attach reflector to LED Module by aligning tabs, then twist and lock into place (Figure 4). For two-piece trim assemblies with lenses, install upper reflector with a twist and lock, then complete the trim assembly by simply pushing the lower assembly into the LED module. Friction clips secure lower assembly in LED module.
- Make the LED Module electrical connection. (Figure 5A)
- Carefully route excess wire out of the way; align metallic connector to heat-sink and snap in place. (Figure 5B)
- Push LED Module with assembled reflector through the hole in plaster frame until flush with ceiling. LED Module is held securely in place with spring clips located on housing frame.

**REPLACEMENT OF LED DRIVER:**

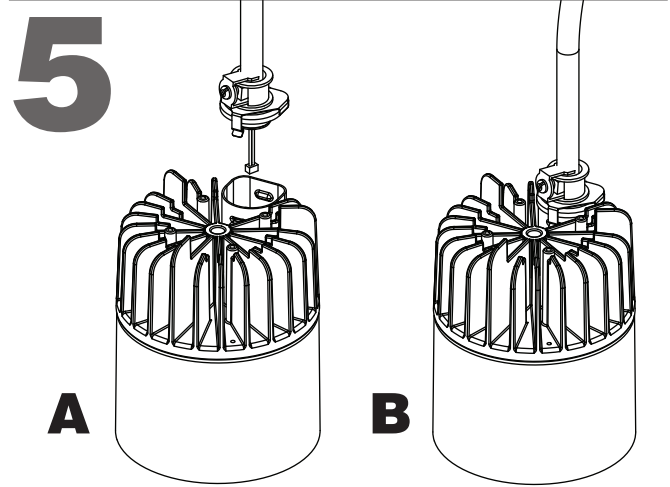
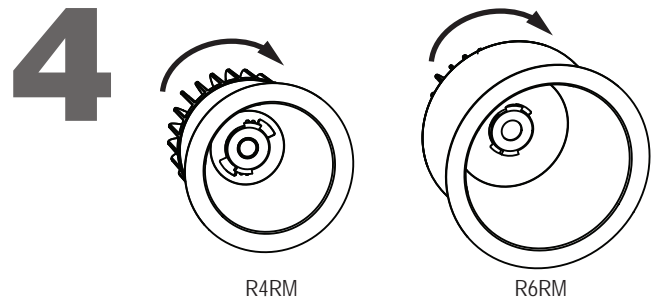
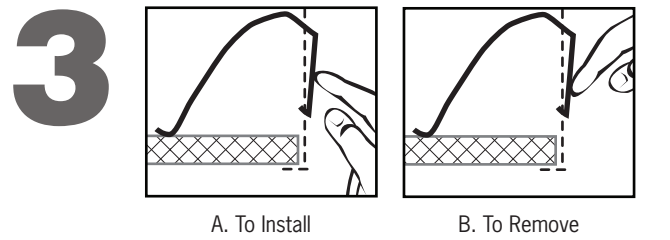
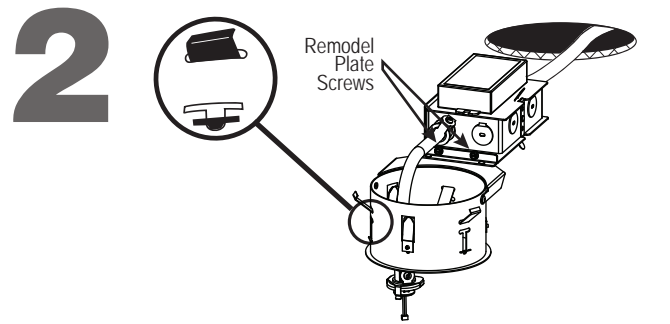
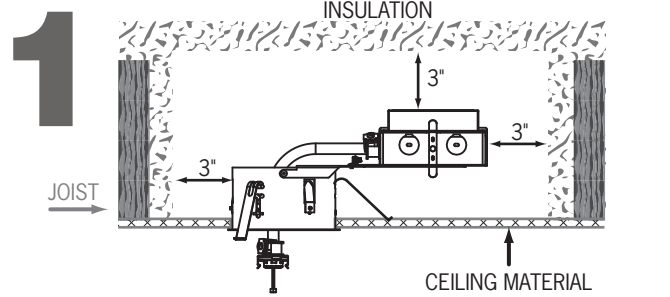
- NOTE:** LED Driver should be replaced by a qualified electrician. Turn off power at fuse or circuit breaker box before replacing the LED Driver.
- Pull and drop the trim and LED Module from the frame.
  - Disconnect the electrical connection. (Figure 5)
  - Complete housing can be removed from ceiling by reversing installation procedure. Or, remodel plate screws can be removed so J-Box/Driver assembly can be pulled through fixture aperture. (Figure 2)
  - Remove the J-Box cover with LED Driver attached to it by releasing retention spring on top of J-Box.
  - Disconnect LED Driver from line voltage input wiring in J-Box. Disconnect the LED Driver from the LED leads (leads are terminated by crimp connectors).
  - Reinstall Factory Approved LED Driver by reversing above procedure.

**IMPORTANT SAFETY INSTRUCTIONS:**

- Read all the instructions before installation. Save instructions for later use.
- Turn off power at fuse or circuit breaker box before installation or before doing any maintenance work.
- Product must be grounded to avoid potential electric shock and any other potential hazards.
- Product must be mounted in locations and at heights and in a manner consistent with its intended use, and in compliance with National Electrical Code and local codes. Use of accessory equipment is not recommended.
- Installing contrary to instructions may cause unsafe conditions.
- Do not block light from the trim aperture, in whole or in part, as this may cause unsafe conditions.
- **Warning:** Risk of fire. Most dwellings built before 1985 have supply wire rated at 60°C. Consult a qualified electrician before installation.
- Avoid hazards to children: account for all parts and properly dispose of all packing materials.
- Call the Technical Support department at ConTech Lighting with any installation questions: 847.559.5500.

**WARRANTY**

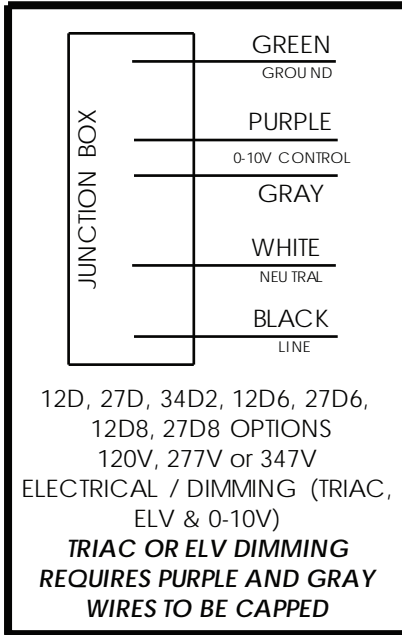
Energy Star products are covered for three (3) years by a full replacement guarantee after date of installation. In addition, ConTech LED products carry a five (5) year limited warranty from date of purchase.



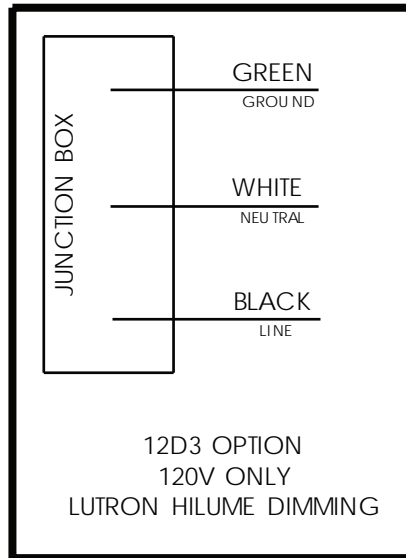
All specifications subject to change without notice.  
For ConTech's limited product warranty, go to [www.contechlighting.com](http://www.contechlighting.com).  
For a printed copy of the warranty, call 1-847-559-5500.

WIRING DIAGRAMS

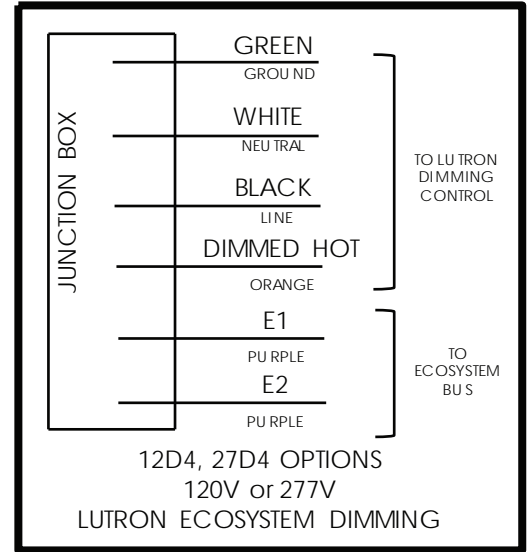
WIRING DIAGRAM-1



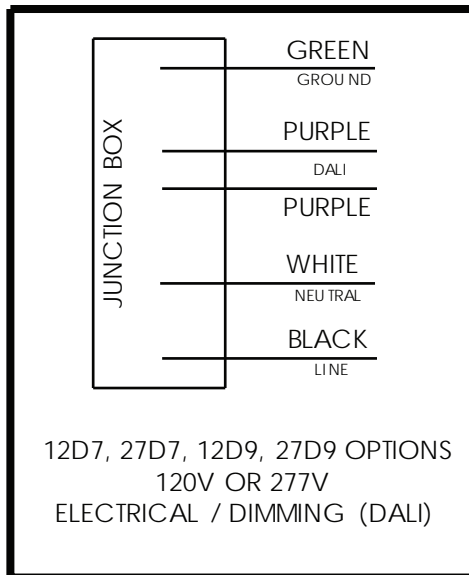
WIRING DIAGRAM-2



WIRING DIAGRAM-3



WIRING DIAGRAM-4



WIRING DIAGRAM-5

