

# QUIET FAN SPEED CONTROL

Single Pole or 3-Way  
Cat. No. 661F – Ceiling Fan 1.5A  
120VAC, 60Hz

## INSTALLATION INSTRUCTIONS

### WARNINGS:

- **TO AVOID FIRE, SHOCK, OR DEATH: TURN OFF POWER** at circuit breaker or fuse and test that power is off before wiring or servicing fixture!
- **TO AVOID FIRE, SHOCK, OR DEATH:** this control is to be used with ceiling fans that are rated 120VAC, total load 1.5 amperes maximum.
- Use and/or install in accordance with appropriate electrical codes and regulations.

### CAUTIONS:

- For use on ceiling paddle fans with split-capacitor or shaded pole motors only. Please refer to manufacturer's

- instructions or rating label on the motor to confirm type. Use with any other types of motors or equipment may cause overheating and/or damage to the motors or equipment.
- Use only one (1) Fan Speed Control per load. The switch(es) will turn ON the fan at the speed level selected at the control.
- To avoid overheating and possible damage to this device and other equipment, **DO NOT** install to control a receptacle, fluorescent lighting, a motor or a transformer-operated appliance other than appropriate ceiling fans.
- If you are unsure about any part of these instructions, consult an electrician.
- Use this device with **copper or copper clad wire only**.

### Tools needed to install your Fan Speed Control

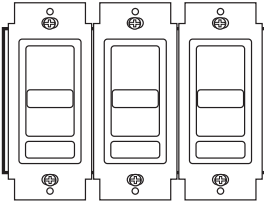
Slotted/Philips Screwdriver  
Pliers

Electrical Tape  
Pencil

Ruler  
Cutters

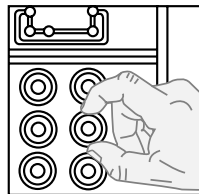
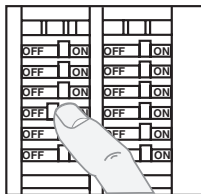
### Installing Control by itself or with other devices

**NOTE:** There is NO derating necessary for multi-gang installations of this Fan Speed Control.



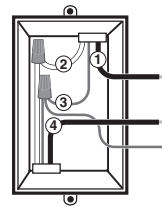
### Installing your Fan Speed Control

- Step 1** **WARNING: TO AVOID FIRE, SHOCK, OR DEATH; TURN OFF POWER** at circuit breaker or fuse and test that power is off before wiring or servicing fixture!



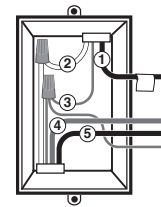
### Step 2 Identifying your wiring application (most common):

**WARNING:** If the wiring in the wall box does not resemble any of these configurations, consult an electrician.



#### Single Pole

1. Line (Hot)
2. Neutral
3. Ground
4. Load



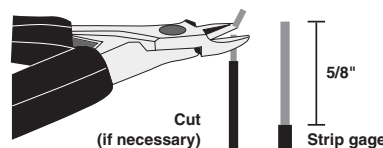
#### 3-Way

1. Line or Load (See note below)
2. Neutral
3. Ground
4. First Traveler – note color
5. Second Traveler – note color

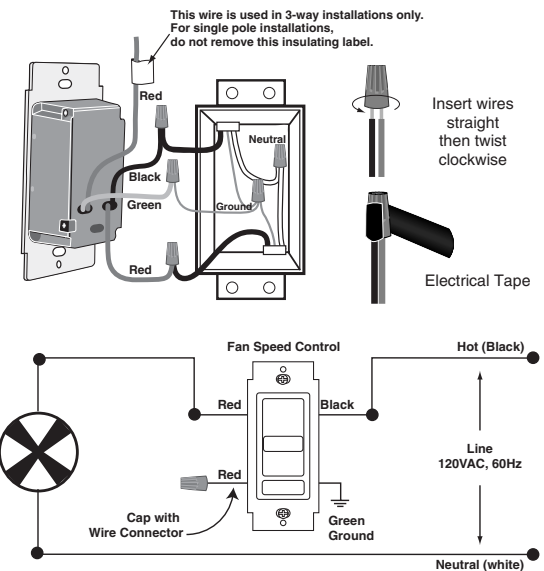
**NOTE:** For 3-Way applications, note that one of the screw terminals from the old switch being removed will usually be a different color (Black) or labeled Common. Tag that wire with electrical tape and identify as the common (Line or Load) in both the Fan Speed Control wall box and 3-way switch wall box.

### Step 3 Preparing and connecting wires:

- Make sure that the ends of the wires from the wall box are straight (**cut if necessary**).
- Remove 5/8" (1.6 cm) of insulation from each wire in the wall box (shown).
- **For Single-Pole Application, go to Step 4a.**
- **For 3-Way Application, go to Step 4b.**



### Step 4a Single-Pole Wiring Application:



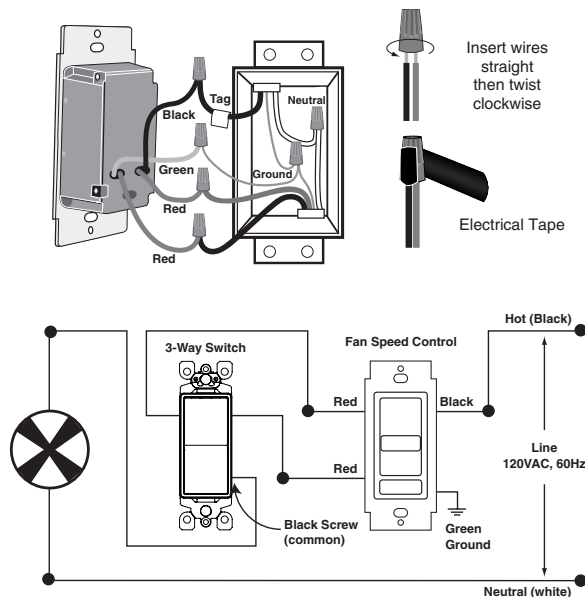
Connect wires per **WIRING DIAGRAM** as follows:

- Green or bare copper wire in wall box to **GREEN** control lead.
- Line Hot wall box wire to **BLACK** control lead.
- Load wall box wire to **RED** control lead.
- Remaining **RED** control lead should have a label affixed. **DO NOT REMOVE** this label in a single pole application.

**NOTE:** If the insulating label is not affixed to the second **RED** lead use electrical tape or a wire connector to cover.

Proceed to **Step 5**.

#### Step 4b 3-Way Wiring Application:

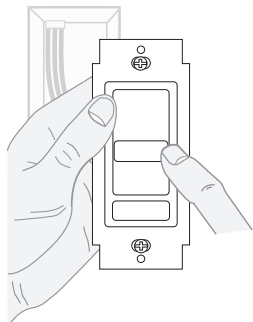


Connect wires per **WIRING DIAGRAM** as follows:

- Green or bare copper wire in wall box to **GREEN** control lead.
- Common (Line hot or Load) wire to **BLACK** control lead.
- Remove insulating label and connect the first traveler wire to the **RED** control lead.
- Connect the second traveler wire to the remaining **RED** control lead.

Proceed to Step 5.

#### Step 5 Testing your Fan Speed Control prior to mounting in the wall box:

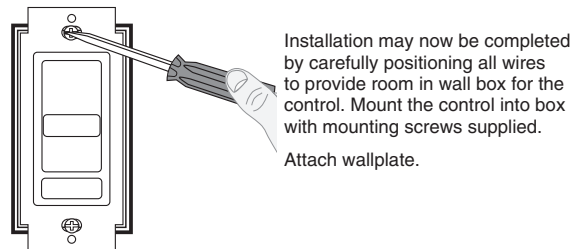


- Restore power at circuit breaker or fuse.
- Carefully holding control as shown, slide control lever to highest position. If fan is not ON, press rocker. Fan should turn ON to highest speed level.

**If fan does not turn ON, refer to the TROUBLESHOOTING section.**

#### Step 6 Fan Speed Control Mounting:

**WARNING: TO AVOID FIRE, SHOCK, OR DEATH; TURN OFF POWER** at circuit breaker or fuse and test that power is off before wiring or servicing fixture!



Installation may now be completed by carefully positioning all wires to provide room in wall box for the control. Mount the control into box with mounting screws supplied.  
Attach wallplate.

#### Step 7 Restore Power:

Restore power at circuit breaker or fuse.

Installation is complete.

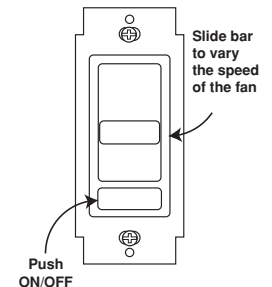
#### Operation

**NOTE:** If using the control in a 3-way application, the control will turn ON at the speed level set on the control's slide bar. The fan can be controlled from either the control or the switch location.

**ON:**  
Push rocker switch "ON"

**OFF:**  
Push rocker switch "OFF"

**CHANGING SPEEDS:**  
Move slide bar  
- Fan will change speeds.



#### Troubleshooting

- Fan does not turn ON
  - Circuit breaker or fuse has tripped.
  - Fan has burned out.
  - Fan Neutral connection is not wired.

For Technical Assistance Call: 1-800-824-3005 (U.S.A. Only) [www.leviton.com](http://www.leviton.com)

#### FOR CANADA ONLY

For warranty information and/or product returns, residents of Canada should contact Leviton in writing at **Leviton Manufacturing of Canada Ltd to the attention of the Quality Assurance Department, 165 Hymus Blvd, Pointe-Claire (Quebec), Canada H9R 1E9** or by telephone at 1 800 405-5320.

© 2018 Leviton Mfg. Co., Inc.

DI-000-0661F-02A

#### LIMITED 5 YEAR WARRANTY AND EXCLUSIONS

Leviton warrants to the original consumer purchaser and not for the benefit of anyone else that this product at the time of its sale by Leviton is free of defects in materials and workmanship under normal and proper use for five years from the purchase date. Leviton's only obligation is to correct such defects by repair or replacement, at its option. **For details visit [www.leviton.com](http://www.leviton.com) or call 1-800-824-3005.** This warranty excludes and there is disclaimed liability for labor for removal of this product or reinstallation. This warranty is void if this product is installed improperly or in an improper environment, overloaded, misused, opened, abused, or altered in any manner, or is not used under normal operating conditions or not in accordance with any labels or instructions. **There are no other or implied warranties of any kind, including merchantability and fitness for a particular purpose,** but if any implied warranty is required by the applicable jurisdiction, the duration of any such implied warranty, including merchantability and fitness for a particular purpose, is limited to five years. **Leviton is not liable for incidental, indirect, special, or consequential damages, including without limitation, damage to, or loss of use of, any equipment, lost sales or profits or delay or failure to perform this warranty obligation.** The remedies provided herein are the exclusive remedies under this warranty, whether based on contract, tort or otherwise.

# ARTWORK PRINT SPECIFICATIONS

**LEVITON®**

**PART NUMBER** DI-000-0661F-02A **REV** **DESCRIPTION** Instruction Sheet

## SPECIFICATIONS :

\* Artwork must be printed at 100% (1:1 scale)

\* Thickness: 40 Lbs

\* Material:

\* Finish:

\* For manuals - designates cover specifications

\* Color(s): 1 over 1

1: Black

2:

3:

4:

☒ Spot

☐ CMYK

\* Fonts:

1: Helvetica

2:

3:

4:

**Die Line Key:** --- Perforate

— Die Cut - - - Fold Line - - - - - Kiss Cut ..... Cellophane ||||| Glue

## MANUAL INTERIORS / BINDERY / FOLD SCHEME :

Body Material:

Thickness:

Bindery

☐ Die cut

☒ Fold

☐ Saddle Stitch

☐ Perfect Bind

☐ Drill

☐ Trim

Color(s): over

1:

2:

3:

4:

☐ Spot

☐ CMYK

Fonts:

1:

2:

3:

4:

## PROCESS :

☒ Offset ☐ Flexo

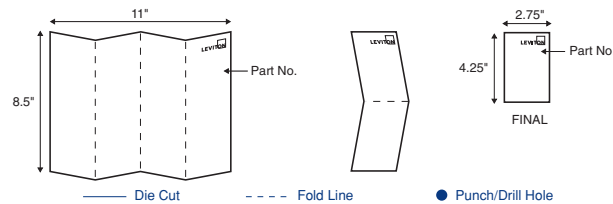
☐ Other

Line Screen:

Angle:

Resolution:

## DIMENSIONS / FOLD SCHEME / BINDERY DIAGRAM



## COMMENTS :

The information in this document is the exclusive PROPRIETARY property of LEVITON MANUFACTURING COMPANY, INC. It is disclosed with the understanding that acceptance or review by the recipient constitutes an undertaking by the recipient, (1) to hold this information in strict confidence, and (2) not to disclose, duplicate, copy, modify or use the information for any purpose other than that for which disclosed.

## FOR LEVITON USE ONLY

Approvals: ☒ Plant 08 J. Tang  
cc: H. Cai

☐ Mktg

☐ Cust

☐ CQA

☒ Eng E. Krajci

☒ Other V. LoNigro

☒ PM K. Cohen  
cc: B. Randall

☒ S & A F. Tse  
cc: J. Lowe

☒ Other C. Buttitta

PN-ARN: HD0118-5330

ECR Number:

Pilot Rev: X1

Artist: D. Quiles

Released Artwork Format: Production PDF

Artwork Release Date: 5/21/18

Notes: