



Double Ended Linear

Double Ended Linear 1500T3Q/P/CL 240V 12PK

High-quality white light with superior lumen performance. Halogen Double Ended lamps provide bright, white light for work lights and security lighting. Rugged construction for busy work sites. Offered in several lengths to meet most application needs. High lumen output provides light where you need it.

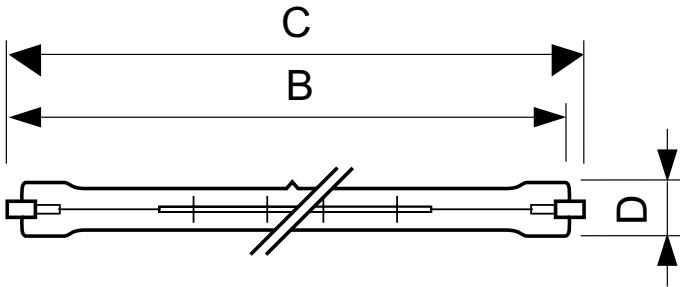
Product data

General Information		Voltage (Nom)	
Cap-Base	R7S [R7s]	240 V	
Bulb Shape	T11 [T 11mm]	Controls and Dimming	
Operating Position	P4 [Parallel +/-4D or Horizontal(HOR)]	Dimmable	Yes
Nominal Lifetime (Nom)	2000 h	Mechanical and Housing	
Switching Cycle	8000X	Bulb Finish	Clear
Light Technical		Approval and Application	
Luminous Flux (Nom)	33000 lm	Energy Efficiency Label (EEL)	C
Luminous Flux (Rated) (Nom)	33000 lm	Energy Consumption kWh/1000 h	1500 kWh
Correlated Color Temperature (Nom)	2900 K	Luminaire Design Requirements	
Luminous Efficacy (rated) (Nom)	22 lm/W	Bulb Temperature (Max)	900 °C
Color Rendering Index (Nom)	100	Pinch Temperature (Max)	350 °C
LLMF At End Of Nominal Lifetime (Min)	80 %	Product Data	
Operating and Electrical		Order product name	Double Ended Linear 1500T3Q/P/CL 240V 12PK
Power (Rated) (Nom)	1500.0 W	EAN/UPC - Product	046677132262
Lamp Current (Nom)	6.25 A	Order code	923932245793
Starting Time (Nom)	0.0 s	Numerator - Quantity Per Pack	1
Warm Up Time To 60% Light (Nom)	instant full light	Numerator - Packs per outer box	12
Power Factor (Nom)	1		

Double Ended Linear

Material Nr. (12NC)	923932245793
Net Weight (Piece)	0.020 kg
ILCOS Code	HDC//RS-1500-240-R7s-250,7

Dimensional drawing



Product	D	B	B	B	C
Double Ended Linear 1500T3Q/P/CL 240V 12PK	11 mm	252.3 mm	250.7 mm	249.1 mm	254.1 mm

DEBig 1500W R7s 240V T11 CL

