

## DESCRIPTION

Adjustable flush gimbal trim is designed for use with IC or Non-IC AIR-TITE™ 3" Halo small aperture line and low voltage housings. This die-cast trim is available in multiple finishes to match interior decor. Adjustable gimbal trim uses MR16 low voltage or GU10 line voltage lamps ideal for accent and task lighting. Trim offers 35° tilt, and -15° reverse tilt and 360° orientation within housing.

<b>Catalog #</b>		<b>Type</b>
<b>Project</b>		
<b>Comments</b>		<b>Date</b>
<b>Prepared by</b>		

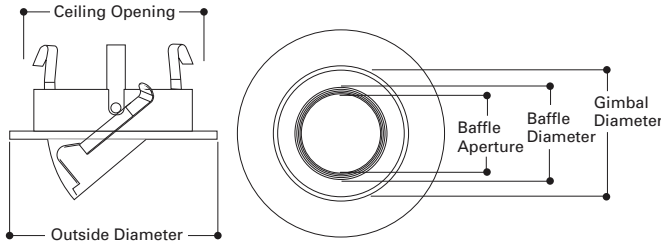
## SPECIFICATION FEATURES

Adjustable gimbal is available in Matte White, Black, Satin Nickel, or Tuscan Bronze finishes with Black Baffle. White gimbal also available with White Baffle. Three pressure springs ensure positive retention in housing.

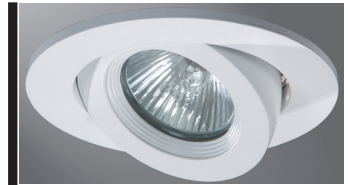
Trim includes cover glass lens which may be replaced with a variety of media. (Lamps that have integral glass lens do not require use of the cover glass supplied with this trim.)

3009 is designed for use with the following Halo H3 small aperture housings:

- Line Voltage Housing (for 120V GU10 lamps).
  - H36ICAT 50W IC Air-Tite Housing
  - H36TAT 50W Non-IC Air-Tite Housing
  - H36RTAT 50W Non-IC Air-Tite Remodel Housing
- Low Voltage Housing (for 12V MR16 lamps).
  - H36LVICAT 50W IC Air-Tite Housing
  - H36LVTAT 50W Non-IC Air-Tite Housing
  - H36LVRTAT 50W Non-IC Air-Tite Remodel Housing
  - H36LVTAT277 50W Non-IC Air-Tite Housing, 120/277V
  - H36LVRTAT277 50W Non-IC Air-Tite Remodel Housing, 120/277V
- Line Voltage Housing (for 120V GU10 lamps).
  - H38ICAT 50W IC Air-Tite Housing
- Low Voltage Housing (for 12V MR16 lamps).
  - H38LVICAT 50W IC Air-Tite Housing



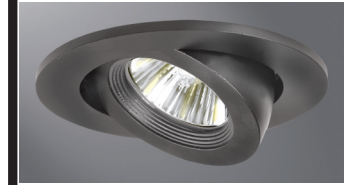
Baffle Aperture: 1-3/4" [45mm]  
 Baffle Diameter: 2" [51mm]  
 Gimbal Diameter: 2-3/4" [70mm]  
 Ceiling Opening: 3-3/4" [95mm]  
 Outside Diameter: 4-1/4" [108mm]



**3009WHWB**  
White with White Baffle



**3009WHBB**  
White with Black Baffle



**3009BKBB**  
Black with Black Baffle



**3009SNBB**  
Satin Nickel with Black Baffle



**3009TBZBB**  
Tuscan Bronze with Black Baffle

## ORDERING INFORMATION

**SAMPLE NUMBER: 3009WHBB**  
 Order housing and trims separately.

Trim	Finish
<b>3009</b> = 3" Adjustable Gimbal Trim	<b>BKBB</b> =Black with Black Baffle <b>SNBB</b> =Satin Nickel with Black Baffle <b>TBZBB</b> =Tuscan Bronze with Black Baffle <b>WHBB</b> =White with Black Baffle <b>WHWB</b> =White with White Baffle

**3009**

**3" Adjustable Gimbal**

**3" TRIMS**