



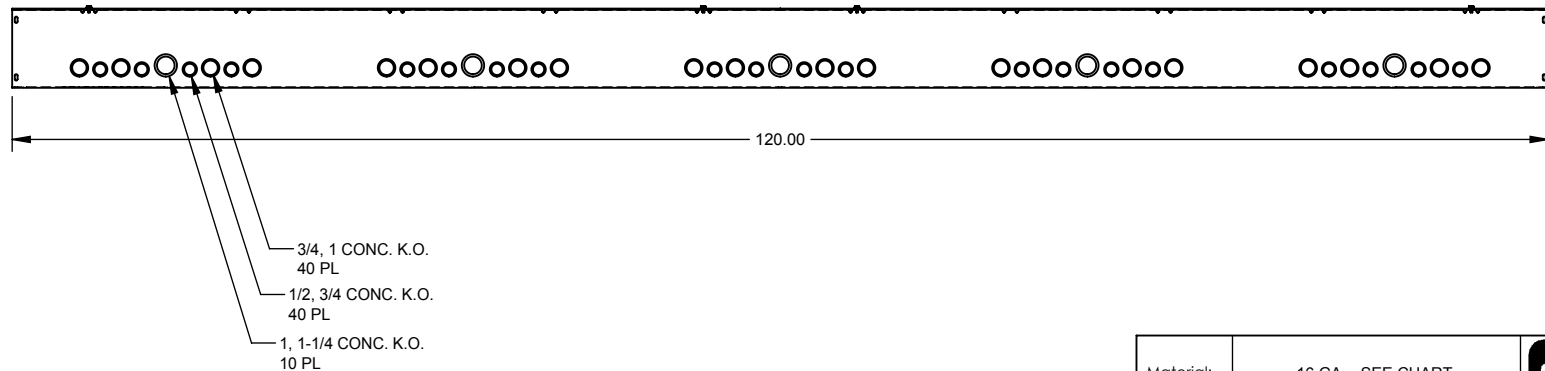
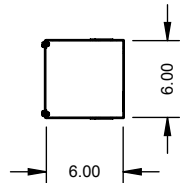
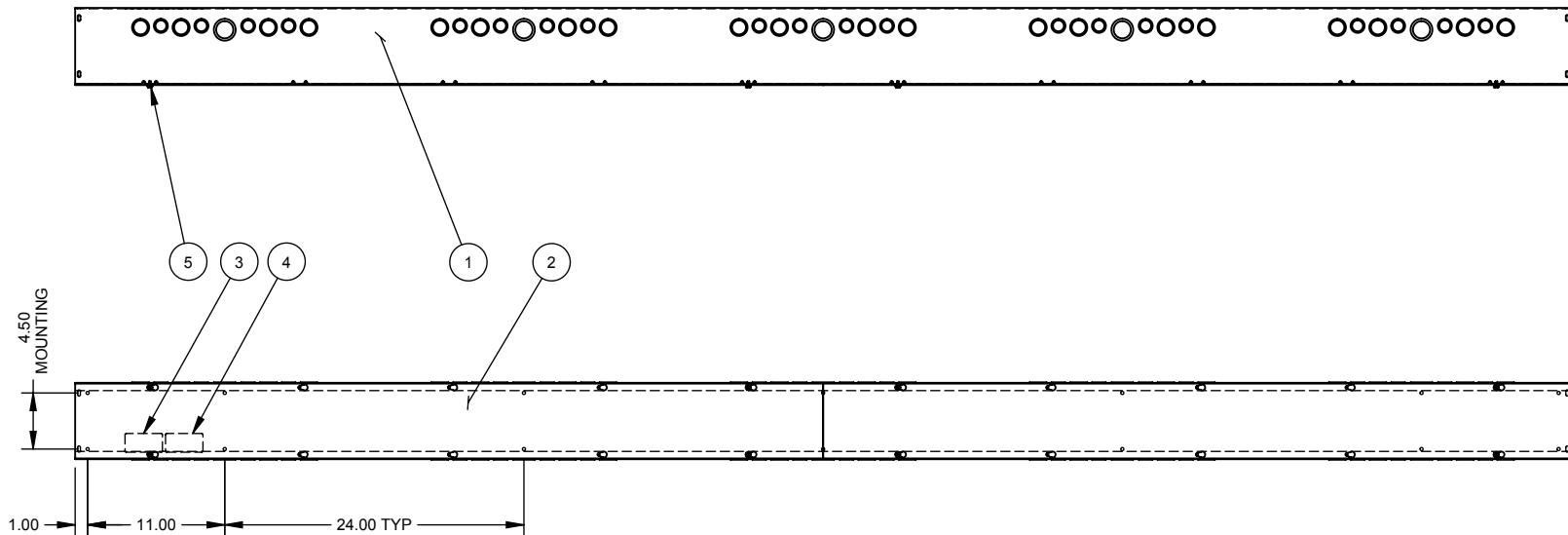
Catalog Number: 66120-GSC1-NK  
Item Description: N1 SCREW CVR GUTTER NK  
UPC Code: 784572107793

Brand Name: Milbank  
Type: Lay In Wireway  
Application: Wireway  
Standard: UL Listed, Type 1  
Cover Type: Screw Cover  
Enclosure: Indoor Enclosure  
Nominal Cross Section: 6x6  
Straight Section Length: 120  
Material: Steel with Powder Coat Finish  
Finish: ANSI 61 Gray  
Knockouts: False





*Utility requirements may vary. Always consult the serving utility for their requirements prior to ordering or installing this equipment. This product must always be installed by a licensed electrician. Installation of this equipment may require local electrical inspector approval.*

CATALOG#	LABEL#	SUFFIX	BACK #	COVER #	SUFFIX	FINISH	ITEM NO.	QTY.	PART NUMBER	DESCRIPTION
66120-GSC1-( )	1002943	-SU	1001447	1003281	NONE	PAINTED	1	1	(SEE CHART)	BACK
RC-66120-GSC1-( )	1125051	-SUC	1128954	1128931	-NP	NOT PAINTED	2	2	(SEE CHART)	PLATE/COVER
SPS-6610( )	1132575	-SO	1128955	1011779			3	1	(SEE CHART)	LABEL (U/L LISTING)
		-SUNK	1001417	1003281			4	1	1002942	LABEL, RATING
		-NK	1098478	1011779			5	8	1001290	SCREW, 10-32 X 5/16
		-SUNKC	1128956	1128931			6	4	1002880	BAG ASSY.



NOTE:  
1. PLACE BAG ASS'Y INSIDE ENCLOSURE. (NOT SHOWN)

Material:		16 GA. - SEE CHART		 <b>MILBANK</b> MANUFACTURING CO.	General Offices: Kansas City, MO			
Finish:		SEE CHART			Title: SCREW COVER WIREWAY 6 x 6 x 120, TYPE 1 NEMA ENCLOSURE			
Tolerances: Unless Specified Otherwise X.X ±.1 X.XX ±.03 X.XXX ±.015 X° ±2°		Third Angle 						
		Projection						
B	Scale: NTS		Checked By:		Catalog No.:	(SEE CHART)		
	Drawn By: DY		Approved By:		Customer:	MILBANK STANDARD		
					Drawing No.:	549-11		
					Date:	05/24/02	Sheet	1 of 1

E	8-29-07	ADDED BACK & COVER CHART ECO. 15946	DL	F	8/25/08	1001290 QTY. WAS 9 (MECO #17608)	EB
E1	5/1/08	ADDED CHART & REMOVED NOTE #2(ECO.17139)	JLT				