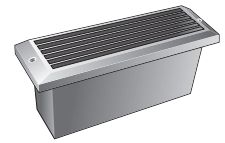
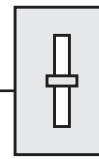
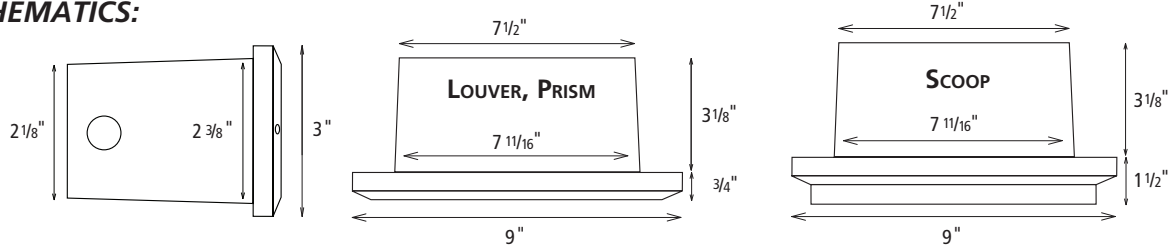


# LED BRICK STAR

**DIMMABLE!**



## SCHEMATICS:



## DESCRIPTION:

Die cast aluminum wall mount LED light fixture fits standard brick void and consumes only 5.2 watts. 72% energy savings vs. Xenon/Halogen technologies. Dimmable. 120VAC input and output of fixture up to 150 fixtures per 15A tap. Replaceable 120VDC LED Module included. UL listed Wet Location for all interior and exterior wall, ceiling and concrete pour applications. Offered in three cover styles and five fixture finishes, including Stainless Steel Louver Cover with fluorocarbon lacquer coated aluminum can.

## APPLICATIONS

- ▶ Brick walls
- ▶ Interior steps
- ▶ Exterior steps
- ▶ Aisles
- ▶ Halls
- ▶ Paths
- ▶ Patio lighting
- ▶ Entry lighting
- ▶ Post lighting

## ORDERING LOGIC:

LBR-Z-XX-YY

### Z = FIXTURE TYPE

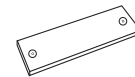
L = Louver Cover  
S = Scoop Cover  
P = Prism Cover

### XX = LED COLOR

WH = White

### YY = FIXTURE FINISH

WH = White  
BZ = Bronze  
BK = Black  
AL = Aluminum  
SS = Stainless Steel  
(Louver cover only)



BL-CC  
Brick Light  
Concrete Cap  
Required for all  
concrete pour and  
brick wall applications.

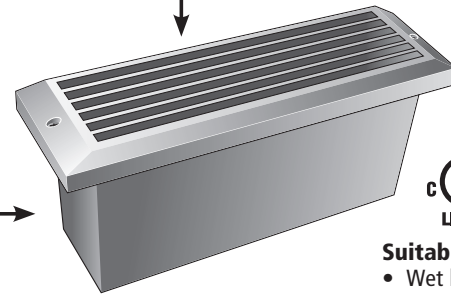
## SPECIFICATIONS:

<b>Voltage</b>	120VAC
<b>Fixture Energy Rating</b>	120VAC, 43mA, 5.2 watts
<b>LED Module Life</b>	Replaceable 120VDC LED Module rated at 40,000 hours
<b>LED Color Temperature</b>	3100K +/- 200K
<b>Cover Finish</b>	White, bronze, aluminum, black or stainless steel
<b>Can Finish</b>	White with aluminum reflector
<b>Construction</b>	Both cover and can are die cast aluminum for corrosion protection, strength, weight, and consistency of finish. New Stainless Steel Louver option. Frosted tempered glass
<b>Lens</b>	
<b>Wiring Options</b>	120V can be parallel wired ("daisy chained") up to 150 fixtures per tap. Check local code and NEC for wiring selection
<b>Dimming</b>	Dimmable. See instructions for details.
<b>Agency Approval</b>	UL listed wet location for all interior and exterior wall, ceiling and concrete pour applications.
<b>Warranty</b>	Two years powder coated finish, 3 years stainless steel finish. See website for details.

## FEATURES

- 120V Power Input
- Low 5.2 watts per fixture energy usage
- Up to 150 fixtures per 120VAC tap
- Dimmable
- 120VDC replaceable LED Module
- No integral LED Driver required
- Pleasingly warm color temperature of 3100K
- 120V push-in connectors included for ease of power input
- Each fixture ships complete with can and cover
- Die cast aluminum can and cover; suitable for concrete pour
- 3 cover designs: Louver, Prism and Scoop
- 5 cover color options: White, Bronze, Black, Aluminum or Stainless Steel
- Numerous 120V 1/2" NPT fittings for standard Romex™ input

• Frosted glass lens



### Suitable for

- Wet locations
- Insulation contact
- Wall and ceiling mount
- Showers
- Use in poured concrete

**NEW!**



Stainless Steel Louver Cover Recommended for use in corrosive environments as salt air, adjacent bodies of water, or installed in caustic materials such as limestone. Three year warranty.

<b>PROJECT:</b>	<b>TYPE:</b>
<b>NOTES:</b>	