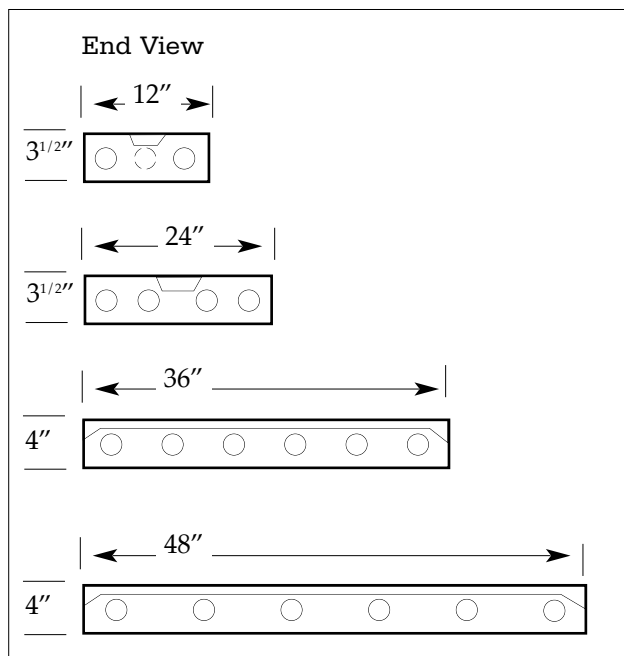


MAYFLOWER SERIES

Solid sided surface module with a variety of sizes, lamps and diffusers to match all types of environments.

Dimensional Data



Specifications

Construction: All metal parts die formed from heavy gauge cold rolled steel housing spot welded to insure uniformity & dimensional stability.

Finish: All metal parts are thoroughly cleaned and treated to prevent rust and deterioration with a phosphate coating applied automatically in a five stage process. Surfaces are then sprayed with high quality white enamel to provide a minimum of reflectance of 89%.

Diffuser: Shieldings are completely enclosed in heavy gauge steel envelope type frame, invisibly hinged and designed to eliminate light leak. Complete shielding may be easily opened and hinged for maintenance without use of tools. (Tamper-proof latching available)

Wiring: All ballast are universal voltage (UV)

Approval: All units are Underwriter's Laboratories (UL) listed.

Ordering Information

<i>Catalog #</i>	<i>Lamp</i>	<i>Size</i>	<i>Catalog #</i>	<i>Lamp</i>	<i>Size</i>
ELECTRONIC T8 12" WIDE			ELECTRONIC T8 24" WIDE		
12MS220AEBO	2-F17T8	1x2	24MS220AEBO	2-F17T8	2x2
12MS240AEBO	2-F32T8	1x4	24MS320AEBO	3-F17T8	2x2
12MS340AEBO	3-F32T8	1x4	24MS420AEBO	4-F17T8	2x2
			24MS620AEBO	6-F17T8	2x2
			24MS240UAEBO	2-FB31 (6")	2x2
ELECTRONIC T8 24" WIDE					
24MS240AEBO	2-F32T8	2x4			
24MS340AEBO	3-F32T8	2x4			
24MS440AEBO	4-F32T8	2x4			
24MS640AEBO	6-F32T8	2x4			

ALSO AVAILABLE IN T5

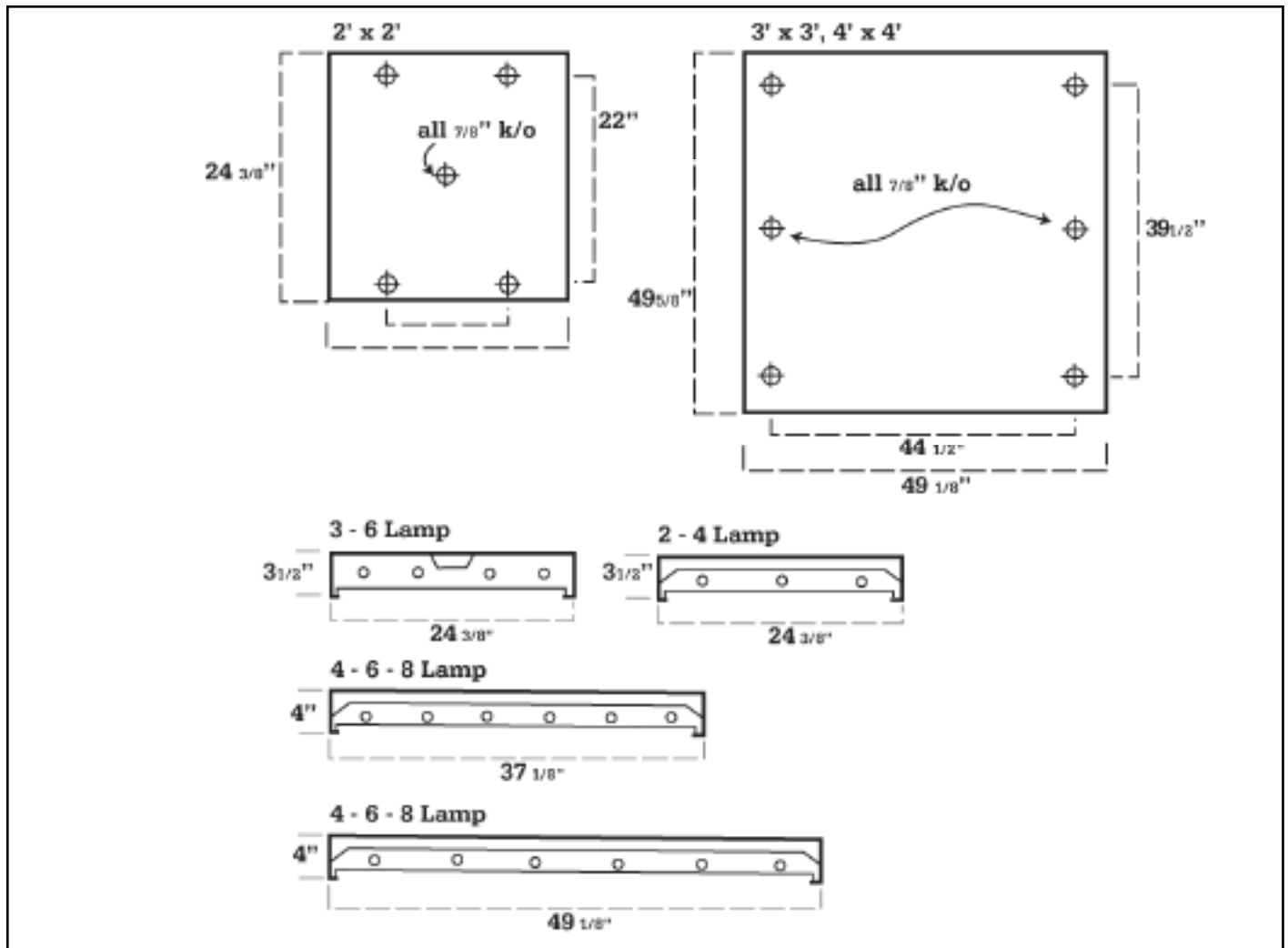
NEW ENGLAND
LIGHTING
INCORPORATED

MAYFLOWER SERIES

Shielding Options

A- Flat .110 Prismatic Acrylic	PAS- 9/16" x 9/16" x 1/2" Specular Silver Parabolic Louver
FOA- Flat .080 Opal Acrylic	PAS34- 3/4" x 3/4" x 1/2" Specular Silver Parabolic Louver
PL- 1/2" x 1/2" x 3/8" White Cubed Louver	A125- .125 Prismatic Acrylic
DPA- .080 Drop Opal Acrylic Dish	A156- .156 Prismatic Acrylic

Installation Data



Photometrics: Photometric Information available upon request.

NEW ENGLAND
LIGHTING
INCORPORATED