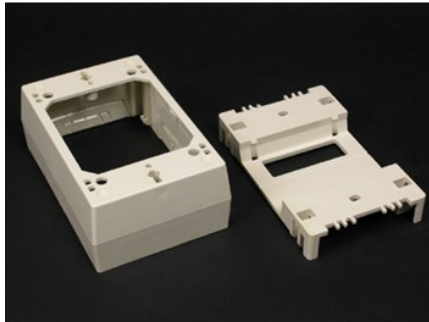

400/800/2300/2300D EXTRA DEEP DEVICE BOX FITTING

2348D | [Wiremold](#)



FEATURES & BENEFITS

For use with 2300D Series Divided Raceway. For mounting standard switches, receptacles, and industry standard faceplates for communication devices.



PRODUCT
ENVIRONMENTAL PROFILE

- This product meets the material restrictions of RoHS

SPECIFICATIONS

GENERAL INFO

Available Colors:

2348D - Ivory

2348D-WH - White

Product Series: 400, 800, 2300

Component Type: Boxes

LISTING AGENCIES/THIRD PARTY CERTIFICATIONS

RoHS: Yes

TECHNICAL INFORMATION

Material: Nonmetallic

Capacity: Single-Channel