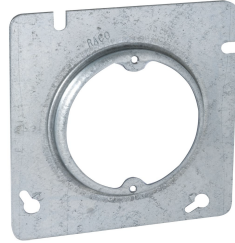


4-11/16 In. Square Cover, 1/2 In. Raised, Open, Ears 2-3/4 In. O.C.

Catalog #:
829



* Not designed for ceiling fan support

FEATURE BENEFIT

Safely cover 4-11/16 in. box, with raised area for mounting device

PRODUCT FEATURES

- Maximum support load for a static fixture is 50 lbs
- Made from zinc, pre-coated, steel
- Angled mounting slots allows for installation of cover without removing the box screws

APPLICATIONS

- Raised fixture covers are used where fixtures will be installed

CERTIFICATIONS



PRODUCT SPECIFICATIONS

UPC Number:	050169008294
Ea Length/Depth (in.):	0.500
Ea Width (in.):	4.688
Ea Height (in.):	4.688
Wt. Ea. (Lbs.):	0.362
Package Type:	Loose
Product UPC-A Labeled:	No

PACKAGING

Case I2of5:	50050169008299
Standard Carton Qty:	25
Min Order Qty:	25

