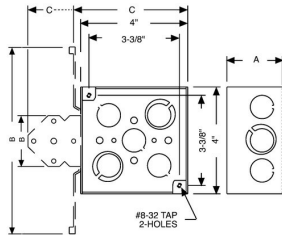




## 4 IN. SQUARE WELDED BOXES - 2-1/8 IN. DEEP WITH CONDUIT KO'S

4 in. Square Boxes, 2-1/8 in. Deep - Welded with Conduit KO's  
600V, Raised Ground, Painted Red

A13



Catalog #: 911-3

### APPLICATIONS

RACO® Boxes are installed in walls or ceilings for lighting fixtures, switches or receptacles  
RACO® Red boxes and covers allow inspector or building owner to immediately identify alarm/fire or life safety systems  
Square boxes are used where multiple conductor runs are split into two or more directions to bring power to a number of electrical devices  
N/A

### PRODUCT FEATURES

Combination screw heads provide for faster installation  
Red boxes, covers and extensions for dedicated life safety alarm circuits  
TKO® Knockouts offer greater flexibility with RACO patented combination 1/2" and 3/4" knockout  
N/A  
Red boxes, covers and extensions for dedicated life safety alarm circuits  
N/A

### UL LISTED

File E195978

### COMPLIANCES

All RACO® single gang, two gang, 4 in. square, and single gang gangable UL listed steel boxes are acceptable for use in 2-hour fire rated walls. For additional information, consult UL "Fire Resistance Directory" or the UL website at [www.ul.com](http://www.ul.com)  
600V Per UL 514-A, suitable for use without a bonding jumper in circuits up to 600 volts  
MSDS  
[www.hubbell-rtb.com/certifications/Hubbell-RACO\\_MSDS\\_for\\_Steel\\_Boxes\\_and\\_Covers.pdf](http://www.hubbell-rtb.com/certifications/Hubbell-RACO_MSDS_for_Steel_Boxes_and_Covers.pdf)  
MSDS  
[www.hubbell-rtb.com/certifications/Hubbell-RACO\\_MSDS\\_for\\_Steel\\_Boxes\\_and\\_Covers.pdf](http://www.hubbell-rtb.com/certifications/Hubbell-RACO_MSDS_for_Steel_Boxes_and_Covers.pdf)

### FIRE RESISTANCE

Acceptable for use in 2-hour rated walls

### GENERAL PRODUCT INFORMATION

Wiring System: Conduit  
Color: Red

### CONFIGURATION

Bracket Type: No Bracket  
Drawn or Welded: Welded  
Raised Ground: Yes  
Side Knockout(s): (8) 1/2 in. & (4) TKO®  
Bottom Knockouts(s): (2) 1/2 in. & (2) TKO®

### DRAWING DIMENSIONS

Dimension A: 2-1/8 in.

### PRODUCT MEASUREMENTS

Depth: 2-1/8 in.  
Cubic Inches (cm3): 30.3 (496.5)  
Wt. Ea. (Lbs.): 0.902  
Product Length (in.): 2.19  
Product Width (in.): 4.00  
Product Height (in.): 4.00

### PACKAGING

Minimum Pack Qty.: 25  
Std. Pkg.: 25  
Product UPC-A Labeled: Yes  
Weight (Lbs. Per/C): 90.20  
Ship Carton Length (in.): 18.70  
Ship Carton Width (in.): 8.50  
Ship Carton Height (in.): 7.10  
Ctn Weight (Lbs.): 22.55  
Pallet Qty: 1750  
UPC Number: 050169091135

