

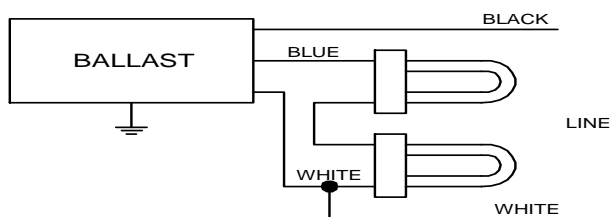
# PHILIPS ADVANCE

## Electrical Specifications

<b>H-2Q26-TP-BLS</b>	
Brand Name	<b>COMPACT-HPF</b>
Ballast Type	<b>Magnetic</b>
Starting Method	<b>Pre-Heat</b>
Lamp Connection	<b>Series</b>
Input Voltage	<b>120</b>
Input Frequency	<b>60 HZ</b>
Status	<b>Active</b>

Lamp Type	Num. of Lamps	Rated Lamp Watts	Min. Start Temp (°F/C)	Input Current (Amps)	Starting Current (Amps)	Open Circuit (Amps)	Input Power (Watts)	Ballast Factor	MAX THD %	Power Factor
* CFM26W/GX24D	2	26	50/10	0.45	0.00	0.00	54	0.92	15	0.99
CFQ26W/G24D	2	26	50/10	0.44	0.00	0.00	52	0.90	15	0.99

### Wiring Diagram



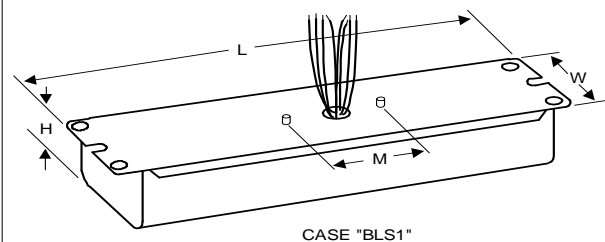
**Diag. 50**

The wiring diagram that appears above is for the lamp type denoted by the asterisk (\*)

### Standard Lead Length (inches)

	in.	cm.		in.	cm.
Black	7	17.8	Yellow/Blue		0
White	7	17.8	Blue/White		0
Blue	7	17.8	Brown		0
Red		0	Orange		0
Yellow		0	Orange/Black		0
Gray		0	Black/White		0
Violet		0	Red/White		0

### Enclosure



### Enclosure Dimensions

OverAll (L)	Width (std)/(TP)	Height (H)	Mounting (M)
8.5 "	2.3125 "	1.6875 "	2 "
8 1/2	2 5/16	1 11/16	2
21.6 cm	5.9 cm / 0 cm	4.3 cm	5.1 cm



Revised 07/10/00

Data is based upon tests performed by Philips Lighting N.A in a controlled environment and representative of relative performance. Actual performance can vary depending on operating conditions. Specifications are subject to change without notice. All specifications are nominal unless otherwise noted.

## Philips Lighting Electronic N.A

10275 West Higgins Road Rosemont, IL 60018 Tel.: 800-322-2086 Fax: 888-432-1882  
Customer Support/Technical Service: 800-372-3331 · OEM Support: 866-915-5886