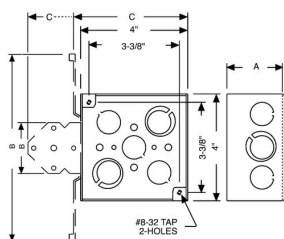


**4 IN. SQUARE WELDED BOXES - 2-1/8 IN. DEEP WITH CONDUIT KO'S****4 in. Square Boxes, 2-1/8 in. Deep - Welded with Conduit KO's
600V, Raised Ground****A13**

Catalog #: 232

APPLICATIONS

RACO® Boxes are installed in walls or ceilings for lighting fixtures, switches or receptacles
Square boxes are used where multiple conductor runs are split into two or more directions to bring power to a number of electrical devices

PRODUCT FEATURES

Combination screw heads provide for faster installation
TKO® Knockouts offer greater flexibility with RACO patented combination 1/2" and 3/4" knockout
N/A

UL LISTED

File E195978

COMPLIANCES

All RACO® single gang, two gang, 4 in. square, and single gang gangable UL listed steel boxes are acceptable for use in 2-hour fire rated walls. For additional information, consult UL "Fire Resistance Directory" or the UL website at www.ul.com
600V Per UL 514-A, suitable for use without a bonding jumper in circuits up to 600 volts
MSDS
www.hubbell-rtb.com/certifications/Hubbell-RACO_MSDS_for_Steel_Boxes_and_Covers.pdf

FIRE RESISTANCE

Acceptable for use in 2-hour rated walls

GENERAL PRODUCT INFORMATION

Wiring System: Conduit
Country of Origin: USA if only from RTB

CONFIGURATION

Bracket Type: No Bracket
Drawn or Welded: Welded
Raised Ground: Yes
Side Knockout(s): (8) 1/2 in. & (4) TKO®
Bottom Knockouts(s): (2) 1/2 in. & (2) TKO®

DRAWING DIMENSIONS

Dimension A: 2-1/8 in.

PRODUCT MEASUREMENTS

Depth: 2-1/8 in.
Cubic Inches (cm3): 30.3 (496.5)
Wt. Ea. (Lbs.): 0.898
Product Length (in.): 2.19
Product Width (in.): 4.00
Product Height (in.): 4.00

PACKAGING

Minimum Pack Qty.: 25
Std. Pkg.: 25
Product UPC-A Labeled: No
Weight (Lbs. Per/C): 89.80
Ship Carton Length (in.): 18.75
Ship Carton Width (in.): 8.88
Ship Carton Height (in.): 7.38
Ctn Weight (Lbs.): 22.45
Pallet Qty: 1750
UPC Number: 050169902325
I2of5: 50050169902320