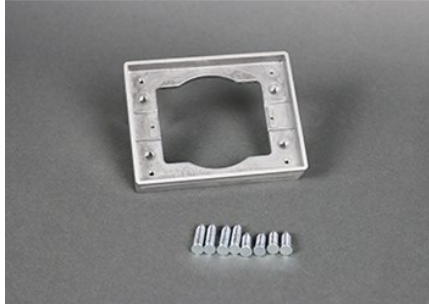

FLANGE

818TAL | [Wiremold](#)



FEATURES & BENEFITS

One-gang brushed aluminum tile flange, 4.524" x 3.480" (107.0mm x 88.4mm). For use on 880S1, 880M1, 880CS1-1, and 880M1-1 Floor Boxes. NOTE: Brushed aluminum flanges come with beveled edges. Brass cover plates can only be used with brass flanges. Brushed aluminum flanges come with beveled edges.



- This product meets the material restrictions of RoHS

SPECIFICATIONS

GENERAL INFO

Product Series: Omnibox
Component Type: Covers & Flanges

LISTING AGENCIES/THIRD PARTY CERTIFICATIONS

RoHS: Yes

BUY AMERICAN ACT COMPLIANCE

Country Of Origin: CHINA
Buy American Act Status: No