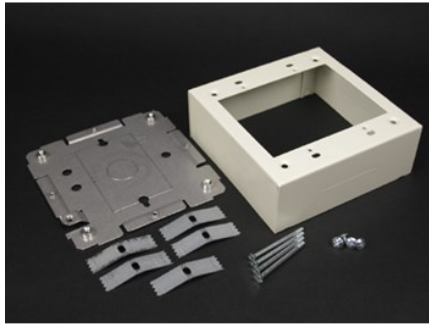

2400 DEVICE BOX FITTING

2448-2 | [Wiremold](#)



FEATURES & BENEFITS

Two-gang device box. Cover has twistouts on all four sides for 2400 Series Raceway. Base has knockout to enable extension from existing single-gang, flush wall box and 1/2" trade size KOs. Accepts industry standard faceplates for electrical and communication devices. NOTE: Accepts NEMA double-gang standard faceplates. Certified to Canadian Safety Standards for sale in Canada. When ordering this product for Canada, add "C" to the beginning of the part number to denote Canadian versions, i.e. "CV2444" or "C2444-FW".



- This product meets the material restrictions of RoHS

SPECIFICATIONS

GENERAL INFO

Available Colors:
V2448-2 - Ivory
2448-2FW - Fog White
Product Series: 2400
Component Type: Boxes

LISTING AGENCIES/THIRD PARTY CERTIFICATIONS

RoHS: Yes

TECHNICAL INFORMATION

Material: Steel
Capacity: Dual-Channel