



# M106 SERIES

## Linear T5 or T8 Fluorescent Shallow Wrap Luminaire

Fixture Type: \_\_\_\_\_

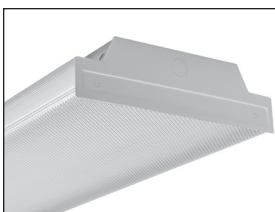
Job Information: \_\_\_\_\_

\_\_\_\_\_

\_\_\_\_\_

### SPECIFICATIONS:

- Low profile linear T5 or T8 fluorescent luminaire featuring a crystal clear acrylic prismatic diffuser that wraps around the light source.
- Applications: Schools, hospitals, office complexes, retail and other commercial type environments. Use in multi-family dwellings as well as all residential environments. Provides high performance, excellent brightness control, and broad angle illumination.
- Lamps: Utilizes all linear T5, T5-HO and T8 fluorescent lamps. Two, three, or four-lamp cross sections.
- Lengths/Lamps: 2Ft., 3Ft., 4Ft., and 8Ft. modules. Tandem 4Ft. lamps on 8Ft. module.
- Housings: Fabricated from code grade cold rolled steel with ample bends for uniformity and strength. Design embossed end plates are riveted onto housing. Wireway cover snaps into housing for easy maintenance. Finished with a high quality white enamel paint baked on to provide an 87% minimum reflectivity.
- Diffusers: Extruded from 100% clear virgin acrylic plastic with an evenly spaced pattern of conical prisms on the bottom panel and sharp linear prisms on the interior side panels. Provides optimum brightness control and light transmission. Diffusers hinge down from either side for easy maintenance. All 8Ft. modules use two individual 4Ft. diffusers.
- Optional Diffusers: A .125" thick version of the standard diffuser or an acrylic smooth white version without prisms.
- Optional Reflectors: Optical reflectors are CAD designed for optimal reflective performance. Fabricated from enhanced specular aluminum which has a 95% reflectivity.
- Ballasts T8: Electronic instant start, high power factor, THD less than 10%. Low ballast factor (.78bf), normal ballast factor (.88bf), or high ballast factor (1.20bf) as specified. Programmed rapid start ballasts are optional. Up to 4-lamps per ballast is standard.
- Ballasts T5 and HO-T5: Electronic programmed start, normal light output, high power factor, THD less than 10% (most ballast/lamp combinations). End-of-lamp life safety shut down feature. Up to 2-lamps per ballasts is standard. Up to 4-lamps per 54W-HO-T5 ballast is standard.
- Dimming: Lutron or Advance dimming ballasts as specified.
- Voltage: Multi-volt operating a range of 120V-277V, 50HZ-60HZ is standard.
- Optional wiring: Two ballasts for dual circuitry.
- Emergency battery back up: Integrated pack ranges from 500-lumen output up to 1400 lumens. Varies with lamp type.
- Installations: Suitable for individual or continuous row mounting. May be surface mounted or suspended on stems, cables, or rods.
- UL and CUL listed 1598 and bears their label. Suitable for dry locations or optional damp locations with UL Damp Label. Union made and labeled.



Two Lamp Detail



Four Lamp Detail



# M106 SERIES Linear T5 or T8 Fluorescent Shallow Wrap Luminaire

Fixture Type: \_\_\_\_\_

Job Information: \_\_\_\_\_

**ORDERING DATA:** Fill in boxes below with corresponding bold options.

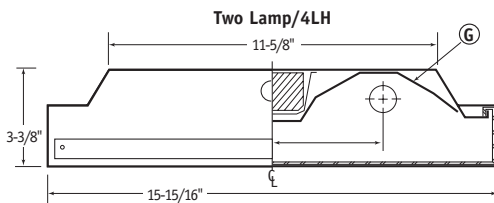
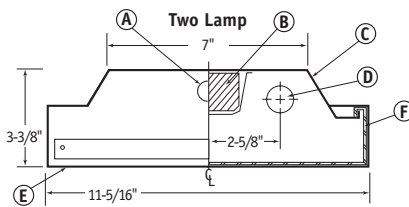
Example: EX: M106-232-OCT/8T-A-MRT-ELB-UNI-EMPK/I32

| Series      | Number of Lamps Cross                                               | Lamp Wattage/Ea./ Fixture Length                                                                                                                                                                                                                                                                                                                                                | Lamp Type                                                                                  | Tandem Housing/ Fixture Length                                                               | Diffuser Type                                                                                                                 | Optional Optical Reflector                                                                                                                        | Ballast Type                                                                                                                                                                                                                                                                                      | Voltage                                                                                                                                                                                                                                                                                                                                                                                                                                                                                                                                                                                                                                               | Misc.                                                                                                              |                                                                                                                                                                                                                                                                                                                                                                                                                                                                                                                                                                                                                                                                                                                                    |
|-------------|---------------------------------------------------------------------|---------------------------------------------------------------------------------------------------------------------------------------------------------------------------------------------------------------------------------------------------------------------------------------------------------------------------------------------------------------------------------|--------------------------------------------------------------------------------------------|----------------------------------------------------------------------------------------------|-------------------------------------------------------------------------------------------------------------------------------|---------------------------------------------------------------------------------------------------------------------------------------------------|---------------------------------------------------------------------------------------------------------------------------------------------------------------------------------------------------------------------------------------------------------------------------------------------------|-------------------------------------------------------------------------------------------------------------------------------------------------------------------------------------------------------------------------------------------------------------------------------------------------------------------------------------------------------------------------------------------------------------------------------------------------------------------------------------------------------------------------------------------------------------------------------------------------------------------------------------------------------|--------------------------------------------------------------------------------------------------------------------|------------------------------------------------------------------------------------------------------------------------------------------------------------------------------------------------------------------------------------------------------------------------------------------------------------------------------------------------------------------------------------------------------------------------------------------------------------------------------------------------------------------------------------------------------------------------------------------------------------------------------------------------------------------------------------------------------------------------------------|
| <b>M106</b> | <b>2</b><br>Lamps<br><br><b>3</b><br>Lamps<br><br><b>4</b><br>Lamps | <b>T5 LAMPS</b><br><b>14</b><br>14W-T5/24"<br><b>21</b><br>21W-T5/36"<br><b>28</b><br>28W-T5/48"<br><br><b>HIGH OUTPUT T5 LAMPS</b><br><b>24</b><br>24W-HO-T5/24"<br><b>39</b><br>39W-HO-T5/36"<br><b>54</b><br>54W-HO-T5/48"<br><br><b>T8 LAMPS</b><br><b>17</b><br>17W-T8/24"<br><b>25</b><br>25W-T8/36"<br><b>32</b><br>32W-T8/48"<br><br>_____<br>Other Lamps as Specified. | <b>T5</b><br>Linear T5<br><b>HO-T5</b><br>Linear High Output T5<br><b>OCT</b><br>Linear T8 | Leave Blank for all 2Ft., 3Ft., 4Ft.<br><br><b>/8T</b><br>96" Housing, 4Ft. Lamps In Tandem. | <b>A</b><br>Acrylic Prismatic Clear.<br><b>A.125</b><br>Acrylic Prismatic Clear/.125".<br><b>ASW</b><br>Acrylic Smooth White. | Leave Blank for No Reflector. Standard 87% Reflective Steel Housing.<br><br><b>MRT</b><br>Enhanced Specular Aluminum Reflector. 95% Reflectivity. | <b>ELBSL</b><br>T8 Electronic Programmed Rapid Start. Low Ballast Factor (.78bf). Up to 4-Lamps/ T8 Ballast.<br><br><b>ELBSH</b><br>T8 Electronic Programmed Rapid Start. High Ballast Factor (1.20bf). Up to 4-Lamps/ T8 Ballast.<br><br><b>ELB-</b><br>T5, HO-T5 or T8 Electronic as Specified. | <b>ELB</b><br>T5 Electronic Programmed Start. Up to 2-Lamps/ T5 Ballast.<br><br><b>ELB</b><br>HO-T5 Electronic Programmed Start. Up to 2-Lamps/ HO-T5 Ballast. Up to 4-Lamps/ 54W-HO-T5 Ballast.<br><br><b>ELB</b><br>T8 Electronic Instant Start. Normal Ballast Factor (.88bf). Up to 4-Lamps/ T8 Ballast.<br><br><b>ELBL</b><br>T8 Electronic Instant Start. Low Ballast Factor (.78bf). Up to 4-Lamps/T8 Ballast.<br><br><b>ELBH</b><br>T8 Electronic Instant Start. High Ballast Factor (1.20bf). Up to 4-Lamps/T8 Ballast.<br><br><b>ELBS</b><br>T8 Electronic Programmed Rapid Start. Normal Ballast Factor (.88bf). Up to 4-Lamps/T8 Ballast. | <b>UNI</b><br>Universal Voltage, Multi-Volt 120V-277V 50HZ-60HZ.<br><br><b>V</b><br>Voltage Specific as Specified. | <b>EMPK/ISL28</b><br>ISL-28 or Equal 500 Lumens. One T5 Lamp.<br><br><b>EMPK/ISL54</b><br>ISL-54 or Equal 825 Lumens. One T5 or HO-T5 Lamp.<br><br><b>EMPK/ISL540</b><br>ISL-540 or Equal 1300 Lumens. One 28W-T5 or 54W-HO-T5 Lamp.<br><br><b>EMPK/I32</b><br>I-32 or Equal 500 Lumens. One 28W-T5 or T8 Lamp.<br><br><b>EMPK/I48</b><br>I-48 or Equal 700 Lumens. One or Two T8 Lamps.<br><br><b>EMPK/I320</b><br>I-320 or Equal 1350 Lumens. One 28W-T5, 54W-HO-T5, or 32W-T8 Lamp.<br><br><b>EMPK/I232</b><br>I-232 or Equal 1400 Lumens. Two 32W-T8 Lamps.<br><br><b>4LH</b><br>Specifies 2-Lamp Cross Section on 4-Lamp Wide Housing.<br><br><b>2B</b><br>Two Ballasts For Dual Circuits.<br><br><b>DL</b><br>UL Damp Label. |
|             |                                                                     |                                                                                                                                                                                                                                                                                                                                                                                 |                                                                                            |                                                                                              |                                                                                                                               |                                                                                                                                                   |                                                                                                                                                                                                                                                                                                   |                                                                                                                                                                                                                                                                                                                                                                                                                                                                                                                                                                                                                                                       |                                                                                                                    |                                                                                                                                                                                                                                                                                                                                                                                                                                                                                                                                                                                                                                                                                                                                    |

## PHOTOMETRICS:

Photometric reports available upon request.

## DIMENSIONAL DATA/CROSS SECTIONS:



- A = 7/8" End K.O.
- B = Ballast
- C = Housing
- D = Lamps (Others)
- E = End Plate
- F = Diffuser
- G = Optional Optical Reflector

