



4448-GSC1-NK-NP  
N1 SCREW CVR GUTTER NK NP  
784572154858

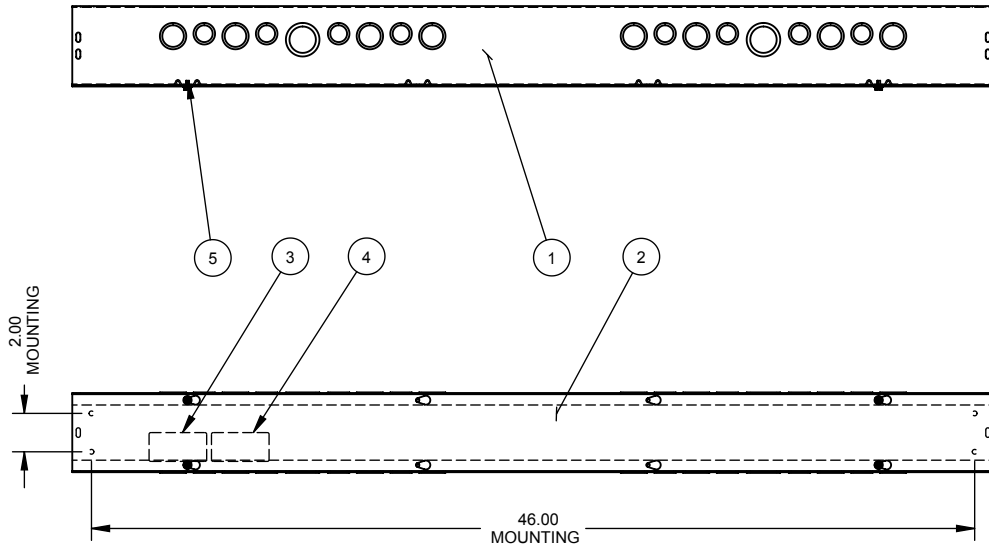
Brand Name: Milbank  
Type: Lay In Wireway  
Application: Wireway  
Standard: UL Listed, Type 1  
Cover Type: Screw Cover  
Enclosure: Indoor Enclosure  
Nominal Cross Section: 4x4  
Straight Section Length: 48  
Material: G90 Galvanized Steel  
Finish: Unpainted  
Knockouts: False



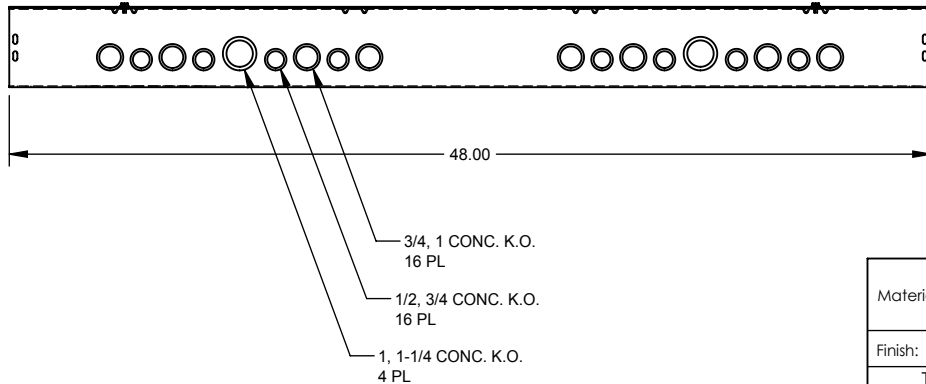
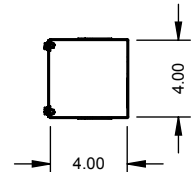
*Utility requirements may vary. Always consult the serving utility for their requirements prior to ordering or installing this equipment. This product must always be installed by a licensed electrician. Installation of this equipment may require local electrical inspector approval.*

CATALOG#	LABEL#
4448-GSC1-( )	1002943
RC-4448-GSC1-( )	1125051
SPS-444( )	1132575

NO.	QTY.	PART NO.	DESCRIPTION
1	1	(SEE CHART)	BACK
2	1	(SEE CHART)	PLATE/COVER
3	1	(SEE CHART)	UL LABEL, WIREWAY
4	1	1002900	LABEL, WIREWAY FITTING
5	4	1001290	SCREW, 10-32 X 5/16
6	3	1002880	BAG ASSY (NOT SHOWN)


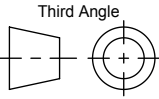


SUFFIX	BACK #	COVER #
-SU	1001302	1003302
-SUC	1094489	1094543
-SO	1128834	1011810
-SUNK	1010676	1003302
-NK	1010674	1011810
-SUNKC	1128835	1094543



SUFFIX	FINISH
NONE	PAINTED
-NP	NOT PAINTED

NOTE:  
1. PLACE BAG ASS'Y INSIDE ENCLOSURE. (NOT SHOWN)

Material:	16 GA. - SEE CHART		 <b>MILBANK</b> MANUFACTURING CO. General Offices: Kansas City, MO		
Finish:	SEE CHART				
Tolerances: Unless Specified Otherwise X.X ±.1 X.XX ±.03 X.XXX ±.015 X° ±2°		 Third Angle  Projection	Title:	SCREW COVER WIREWAY 4 x 4 x 48, TYPE 1 NEMA ENCLOSURE	
			Catalog No.:	(SEE CHART)	
			Customer:	MILBANK STANDARD	
			Drawing No.:	239	
Scale:	NTS		Checked By:		
Drawn By:	DY	Approved By:			
Date:	3/19/02	Sheet	1 of 1		

D	8-28-07	ADDED BACK & COVER CHART ECO. 15946	DL	E	6/16/11	1002880 (3) WAS (4) (ECO #20834)	D.F.
D1	5/1/08	ADDED CHART & REMOVED NOTE #2(ECO.17139)	JLT				