



# M401 SERIES

## Enclosed and Gasketed Fluorescent Lighting Wet Location UL Listing

Fixture Type: \_\_\_\_\_

Job Information: \_\_\_\_\_  
\_\_\_\_\_  
\_\_\_\_\_

### SPECIFICATIONS:

- Enclosed and gasketed fiberglass luminaire designed and engineered to withstand most critical environments. Weather and chemical resistant, corrosion free, and impervious to vapors, dust, and moisture. UL listed for wet locations.
- Applications: Food handling and processing facilities, manufacturing and fabricating, drug and chemical plants. Use in shower areas, parking garages, pedestrian and roadway tunnels, and outdoor public areas.
- Modules: Lengths of 4ft. and 8ft. utilize the corresponding linear T5, T5-HO, T8 and T8-HO fluorescent lamps. Linear T12-HO available for cold applications. On request a 2ft. module available.
- T5 Lamps: 4ft. linear 28W-T5 or 54W-HO-T5; one, two, or three-lamp cross sections. Tandem lamping on 8ft. modules.
- T8 Lamps: 4ft. linear 32W-T8; one, two, or three-lamp cross sections. 4ft. linear 44W-HO-T8; one-or two-lamp cross sections. Tandem lamping on 8ft. modules. 8ft. linear 59W-SL-T8 or 86W-HO-T8; one or two-lamp cross sections.
- T12 Lamps: 4ft. linear 48-HO-T12 (60W) or 8ft. 96-HO-T12 (95W) for cold applications; one or two-lamp cross sections.
- Diffusers: Injection-molded clear virgin acrylic plastic with 25% DR added for strength and durability. Crepe pattern on the inside surface cuts glare while offering maximum light transmission. Smooth outside surface is resistant to dirt accumulation and bacterial growth and is easily cleaned.
- Optional diffusers: DR/clear acrylic plastic with 100% DR for breakage resistance. PPC/clear UV stabilized unbreakable polycarbonate material for freedom from abuse and vandalism.
- Housings: Compression molded in one-piece of non-conductive, non-corrosive, and self-extinguishing 5V-A fiberglass reinforced polyester. A poured continuous gasketing permanently bonds and fills perimeter channel where upon latching, the diffuser and housing form a liquid tight seal. Permanently finished in a pearl white color that never needs painting or refinishing.
- Latches: Unbreakable polycarbonate with cam action and self-locking feature to stay closed without hardware. Optional stainless steel latches are provided with tamperproof screws for added security against vandalism or unauthorized fixture entry. May be used without tamperproof screws.
- Heavy gauge steel-wiring channel and reflectors: Attached to the housing with internal brass studs for easy removal and quick installations. Contains the ballast, sockets, and all wiring on an easy to handle one-piece component. Finished in baked white enamel with a minimum reflectivity of 87%.
- Optical reflectors: CAD designed for optimal reflective performance. Fabricated from Miro-4 enhanced specular aluminum with a 95% reflectivity.
- Ballasts T5: Electronic programmed start, normal light output, high power factor, THD less than 10%. Up to 2-lamps per 28W-T5 ballast. Up to 4-lamps per 54W-HO-T5 ballast.
- Ballasts T8: Electronic instant start, normal light output, high power factor, THD less than 10%. Up to 4-lamps per 32W-T8 ballast. Up to 2-lamps per 59W-SL-T8 ballast. Optional 32W-T8 performances; rapid start, high light output, or low watt. Electronic rapid start and up to 2-lamps per 44W-HO-T8 and 86W-HO-T8 ballast.
- Ballasts T12: Electronic rapid start, normal light output, high power factor, THD less than 10%. Up to 2-lamps per ballast.
- Cold temperature: Most ballast/lamp combinations have zero degree F low temperature starting. Some HO types will start at -20 degree F. When critical specify low temp.
- Voltage: Multi-volt operates a range from 120V-277V, 50HZ-60HZ.
- Emergency battery backup: Integrated pack, vented housing, UL damp label only. Lumen output varies with lamp type.
- Installations: A 7/8" hole in each end for surface conduit entry and continuous feeds. Liquid tight plugs supplied. Two die-cast zinc weatherproof hubs with gaskets and plugs are supplied. Threaded for 1/2" pipe.
- Mounting: Mount individually or continuous. Various topside embossments contain drill points for job site mounting options. Proper sealing will maintain wet location status.
- Optional Hangers: Stainless steel "slide grip" style hanger brackets allow easy mounting without drilling housing. Hook under diffuser anywhere along length of housing. End chain brackets are held in place with hubs. Housing contains external threaded brass studs for other hanging options.
- UL and CUL listed 1598 and bears a UL wet location label. Approved by NSF International and bears their label. U.S. Dept. of Agriculture recognized. Union made and labeled.



# M401 SERIES Enclosed and Gasketed Fluorescent Lighting Wet Location UL Listing

Fixture Type:

Job Information:

**ORDERING DATA:** Fill in boxes below with corresponding bold options.

Example: M401-232-OCT/8T-DR-ELBH-UNI

Series	No. of Lamps Cross	Lamp Wattage/Ea./ Nominal Fixture Length	Lamp Type	Tandem Housing/ Fixture Length	Optional Optical Reflector	Diffuser Type	Ballast Type	Voltage	Misc
M401	1 Lamp	<b>28</b> 28W-T5/4Ft.	<b>T5</b> Linear T5	Leave Blank Except for 8Ft. Tandem Lamps.	Leave Blank for No Optical Reflector.	Leave Blank For Injection-Molded Clear Acrylic/25% DR/Crepe Inside, Smooth Outside.	<b>ELB</b> T5 or H0-T5 Electronic Programmed Start. Up to 2-lamps/ 28W-T5 ballast.	<b>UNI</b> Universal Voltage, Multi-Volt 120V-277V, 50HZ-60HZ.	<b>EMPK/ISL28</b> ISL-28 or Equal 500 Lumens. One 28W-T5 Lamp.
	2 Lamps	<b>54</b> 54W-H0-T5/4Ft.	<b>H0-T5</b> Linear High Output T5	<b>/8T</b> Nom. 8Ft. Housing, 4Ft. Lamps In Tandem.	<b>MRT</b> Miro-4 Enhanced Specular Aluminum Reflector, 95% Reflectivity.	<b>DR</b> Injection-Molded Clear Acrylic/100% DR/Crepe Inside, Smooth Outside.	<b>ELB</b> T8 Electronic Instant Start. Up to 4-Lamps/ 54W-H0-T5 Ballast.	<b>120V</b> 120V-60HZ as Needed.	<b>EMPK/ISL54</b> ISL-54 or Equal 825 Lumens. One 28W-T5 or 54W-H0-T5 Lamp.
	3 Lamps (T5, H0-T5, 32W-T8 Lamps Only)	<b>32</b> 32W-T8/4Ft.	<b>OCT</b> Linear T8	Leave Blank for H0-T12 Lamping.		<b>PPC (LEXAN)</b> Injection-Molded Clear Unbreakable Polycarbonate/Crepe Inside, Smooth Outside.	<b>ELBL</b> T8 Electronic Instant Start Low Watt. Up to 4-Lamps/ 32W-T8 Ballast.	<b>277V</b> 277V-60HZ as Needed.	<b>EMPK/ISL540</b> ISL-540 or Equal 1300 Lumens. One 28W-T5 or 54W-H0-T5 Lamp.
		<b>59</b> 59W-SL-T8/8Ft.							<b>EMPK/I32</b> I-32 or Equal 500 Lumens. One 28W-T5 or One 32W-T8 Lamp.
		<b>44-HO</b> 44W-H0-T8/4Ft.							<b>EMPK/I48</b> I-48 or Equal 700 Lumens. One or Two 32W-T8 Lamps. One 59W-SL-T8 or 86W-H0-T8 Lamp.
		<b>86-HO</b> 86W-H0-T8/8Ft.							<b>EMPK/I320</b> I-320 or Equal 1300 Lumens. One 28W-T5 or 54W-H0-T5 Lamp. One or Two 32W-T8 Lamps. One 59W-SL-T8 or 86W-H0-T8 Lamp.
		<b>48-HO</b> 60W-H0-T12/4Ft.							<b>EMPK/I880</b> I-880 or Equal 2000 Lumens. One 28W-T5 or 54W-H0-T5 Lamp. One or Two 32W-T8 Lamps. One 59W-SL-T8 or 86W-H0-T8 Lamp.
		<b>96-HO</b> 95W-H0-T12/8Ft.							<b>SSTP</b> Stainless Steel Latches with Tamperproof Screws. May be used without screws.
		As Specified.							<b>DL</b> For use with all EMPK. UL Damp Label, Vented housing.

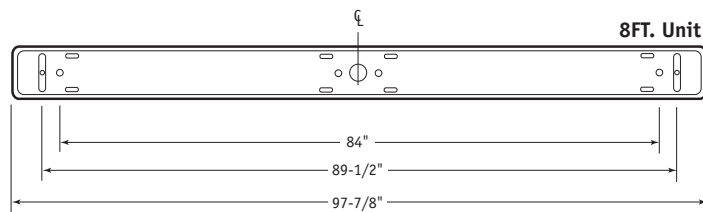
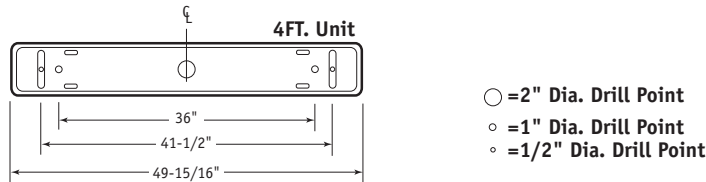
## ACCESSORIES: (Order Separately)

CAT#	Description
<b>ECB-M401</b>	End Chain Hanger Bracket. (Each)
<b>HB-M401</b>	Stainless Steel Hanger Bracket Set. (Set of Two.)
<b>TPT</b>	Tamperproof Tool

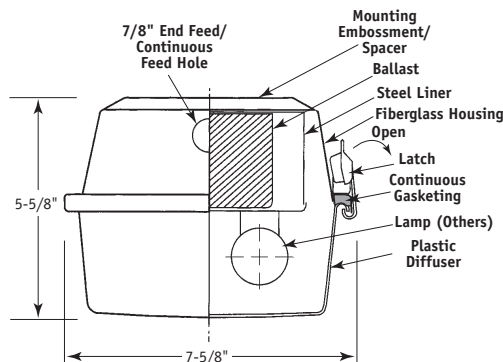
## PHOTOMETRICS:

M401-232-OCT-ELB-UNI LTL # 7273  
M401-259-OCT-ELB-UNI LTL # 7274  
M401-296-HO-ELB-UNI LTL # 7275

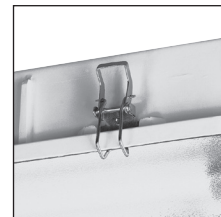
## DIMENSIONAL DATA/CROSS SECTION:



Cut-Away Cross Section



## Optional Latches



SSTP Tamperproof Stainless Steel Latch

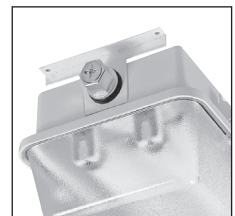
## Optional Hangers



HB Stainless Steel Hanger Bracket



A set of (2) die-cast zinc weatherproof hubs included with every fixture.



ECB End Chain Hanger Bracket

