



# MIE6 SERIES

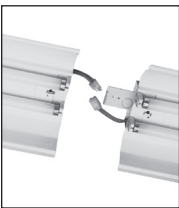
## Linear T8 1-, 2-, or 3-Lamp Fluorescent Industrial Luminaire

Fixture Type: \_\_\_\_\_

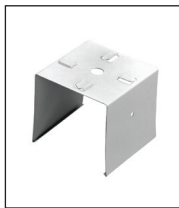
Job Information: \_\_\_\_\_  
 \_\_\_\_\_  
 \_\_\_\_\_

### SPECIFICATIONS:

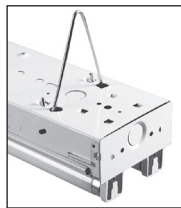
- General-purpose linear T8 fluorescent industrial style luminaire featuring a wide symmetrical reflector, which shields and controls the output of the lamps.
- Applications: Use for all industrial, commercial, and retail general area lighting applications. Industrial style reflector directs 100% of the illumination down to the work or merchandising areas without any lost to unfinished or high ceiling.
- Optional apertured reflector: Allows approximately 10% uplighting, which reduces harsh contrasting with a completely dark ceiling. Fills the volume of space more evenly making it a more comfortable environment.
- Lamps T8: Utilizes all linear T8 bi-pin type fluorescent lamps. One, two, or three-lamp cross sections.
- Lengths/Lamps: 2Ft./17W-T8; 3Ft./25W-T8; 4Ft./32W-T8; 6Ft./25W-T8 tandem lamps; 8Ft./32W-T8 tandem lamps. Other T8 lamps on request.
- Ballasts T8: Electronic instant start, high power factor, THD less than 10%. Low ballast factor (.78bf), normal ballast factor (.88bf), or high ballast factor (1.20bf) as specified. Optional T8 ballasts; programmed rapid start, Lutron or Advance dimming ballasts as specified. Up to 4-lamps per ballast is standard.
- Voltage: Multi-volt operating a range of 120V-277V, 50HZ-60HZ is standard.
- Optional wiring: Two ballasts for dual circuitry. Tandem-in-line wiring. Single or dual circuit quick connect plug through wiring harnesses.
- Emergency battery back up: Integrated pack ranges from 500-lumen output up to 1400 lumens. Varies with lamp type.
- Housing: Die formed from code gauge cold rolled steel. End plates quickly convert to snap-in continuous row joiners for uninterrupted wireway. Easy install socket plates have snap-in action. Reflectors attach with quarter-turn fasteners for easy installations and maintenance. Two reflectors with provided aligners are used on all 6Ft. and 8Ft. fixtures. Sufficient knockouts are provided on the back and ends for all electrical connection. Baked white enamel finish provides a minimum reflectivity of 87%. Optional 20GA housing is available.
- Sockets: 1/4 twist bi-pin or optional rotary locking type.
- Installations: Suitable for individual or continuous row mounting. May be surface mounted or suspended on stems, cables, or rods.
- Optional accessories: Ship separately; Wire guards, clamp hangers, V hangers, stem sets, cable sets. Wired-in; GLR or GMF fusing, 120V 18/3-SJT cord and plug set, 120V 16/3-SJT cord and NEMA L5-15P twist-lock plug set, 277V 16/3-SJT cord and NEMA L7-15P twist-lock plug set, various occupancy sensors.
- UL and CUL listed 1598 and bears their label. Suitable for dry locations or optional damp locations with UL Damp Label. Union made and labeled.



P1 or P2 Plug Thru  
Quick Connect  
Feature



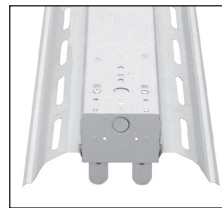
Clamp Hanger



V-Hanger



Wire Guard



10% Uplight Reflector



**MERCURY  
LIGHTING**  
PRODUCTS CO. INC.

# MIE6 SERIES Linear T8 1-, 2-, or 3-Lamp Fluorescent Industrial Luminaire

Fixture Type: \_\_\_\_\_

Job Information: \_\_\_\_\_

**ORDERING DATA:** Fill in boxes below with corresponding bold options.

Example: MIE6-232-OCT/8T-10%-ELB-UNI-EMPK/I320

Series	No. of Lamps Cross	Lamp Wattage/Ea./ Fixture Length	Lamp Type	Tandem Housing/ Fixture Length	Optional Apertured Reflector	Ballast Type	Voltage	Misc.
<b>MIE6</b> Industrial Luminaire.	<b>1</b> Lamp	<b>17</b> 17W-T8-24"L.	<b>OCT</b> Octron T8	Leave Blank for All 2Ft., 3Ft., 4Ft. <b>/6T</b> 72" Housing, 3Ft. Lamps in Tandem. <b>/8T</b> 96" Housing, 4Ft. Lamps in Tandem.	Leave Blank for Solid Reflector. <b>10%</b> 10% Uplighting.	<b>ELB</b> T8 Electronic Instant Start. Normal Ballast Factor (.88bf). Up to 4-Lamps/32W-T8 Ballast. <b>ELBL</b> T8 Electronic Instant Start. Low Ballast Factor (.78bf). Up to 4-Lamps/32W-T8 Ballast. <b>ELBH</b> T8 Electronic Instant Start. High Ballast Factor (1.20bf). Up to 4-Lamps/32W-T8 Ballast. <b>ELBS</b> T8 Electronic Programmed Rapid Start. Normal Ballast Factor (.88bf). Up to 4-Lamps/32W-T8 Ballast. <b>ELBSL</b> T8 Electronic Programmed Rapid Start. Low Ballast Factor (.78bf). Up to 4-Lamps/32W-T8 Ballast. <b>ELBSH</b> T8 Electronic Programmed Rapid Start. High Ballast Factor (1.20bf). Up to 4-Lamps/32W-T8 Ballast. <b>ELB-</b> T8 Electronic As Specified.	<b>UNI</b> Universal Voltage. Multi-Volt 120V-277V 50HZ-60HZ. <b>120V</b> 120V-60HZ/ Dedicated Voltage for Dimming, Cord Sets, Flex. <b>277V</b> 277V-60HZ/ Dedicated Voltage for Dimming, Cord Sets, Flex.	<b>EMPK</b> I-32 or Equal 500 Lumens. One T8 Lamp. <b>EMPK/I48</b> I-48 or Equal 700 Lumens. One or Two T8 Lamps. <b>EMPK/I320</b> I-320 or Equal 1350 Lumens. One T8 Lamp. <b>EMPK/I232</b> I-232 or Equal 1400 Lumens. Two T8 Lamps. <b>2B</b> Two Ballasts For Dual Circuits. <b>LS</b> Locking Sockets. <b>P1</b> Single Circuit Plug Thru. Specify Voltage. <b>P2</b> Dual Circuit Plug Thru. Specify Voltage. <b>TILW</b> Tandem-in-Line Wiring. <b>OS</b> Leviton OSFHU or Equal Occupancy Sensor. 360 Degree Lens Installed. Aisle Way Pattern Included. Others as Specified. <b>18/3CP</b> 120V 18/3 SJT Cord & Plug Set/Others on Request. <b>16/3CTP</b> 120V 16/3 SJT Cord & NEMA L5-15P Twist-Lock Plug Set/ Others on Request. <b>277-16/3CTP</b> 277V 16/3 SJT Cord & NEMA L7-15P Twist-Lock Plug Set/ Others on Request.

**WIRE GUARDS:** Order Separately

Example: WG-MIE6-232  
(Use 2 Each For 6ft & 8ft Fixtures)

Series	Lamp Wattage/ Wire Guard Length
<b>WG-MIE6</b> Wire Guard	<b>217</b> 24"L <b>225</b> 36"L <b>232</b> 48"L

**ACCESSORIES:** Order Separately

CAT #	Description
<b>CH-S</b>	Clamp Hanger
<b>ACP</b>	Aligner Plastic
<b>VH</b>	V Hanger
<b>VH-48</b>	V Hanger w/48" Chain & S Hook
<b>S1-___*</b>	Single Stem Set* *Add Length

**PHOTOMETRICS:**

Reports available upon request.

**DIMENSIONAL DATA/CROSS SECTIONS:**

