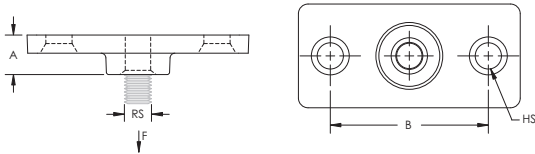


# 365M Malleable Iron Wall or Ceiling Plate – 365M0037PL



- Structural attachment to support hanger rod from a ceiling or a wall



Part Number	365M0037PL
Material	Cast Iron
Finish	Plain
Rod Size (RS)	3/8"
Hole Size (HS)	1/4"
A	15/32"
B	1 15/16"
Pipe Size	2" Max
Static Load (F)	180 lb
Standard Packaging Quantity	100 pc
UPC	78285635573

Follow fastener manufacturer's recommended shear and pull-out strength when fastening to the structure. Fastener not included.

## WARNING

nVent products shall be installed and used only as indicated in nVent's product instruction sheets and training materials. Instruction sheets are available at [www.erico.com](http://www.erico.com) and from your nVent customer service representative. Improper installation, misuse, misapplication or other failure to completely follow nVent's instructions and warnings may cause product malfunction, property damage, serious bodily injury and death and/or void your warranty.

© 2019 nVent All rights reserved

nVent, nVent CADDY, nVent ERICO, nVent ERIFLEX and nVent LENTON are owned by nVent or its global affiliates.

All other trademarks are the property of their respective owners. nVent reserves the right to change specifications without prior notice.

