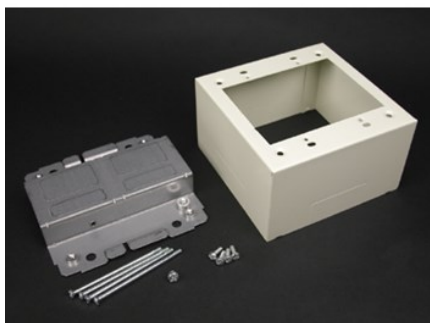


## 2400 DEVICE BOX FITTING

2444-2LS | [Wiremold](#)



### FEATURES & BENEFITS

Two-gang, labor-saving, over-the-raceway device box. Cover has twistout on all four sides for 2400 Series Raceway. Accepts industry standard faceplates for electrical and communication devices. NOTE: Accepts NEMA double-gang standard faceplates. Certified to Canadian Safety Standards for sale in Canada. When ordering this product for Canada, add "C" to the beginning of the part number to denote Canadian versions, i.e. "CV2444" or "C2444-FW".



- This product meets the material restrictions of RoHS

### SPECIFICATIONS

#### GENERAL INFO

Available Colors:  
V2444-2LS - Ivory  
2444-2LSFW - Fog White

Product Series: 2400  
Component Type: Boxes

#### LISTING AGENCIES/THIRD PARTY CERTIFICATIONS

RoHS: Yes

#### TECHNICAL INFORMATION

Material: Steel  
Capacity: Dual-Channel