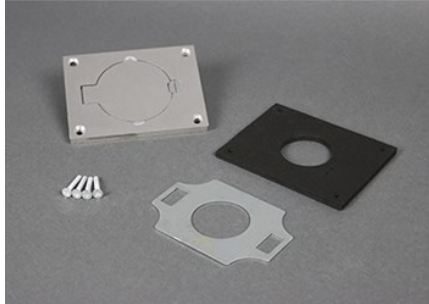

SINGLE LOCKING COVER PLATE

828DLRAL | [Wiremold](#)



FEATURES & BENEFITS

Brushed aluminum single locking receptacle cover plate. Single flip lid cover for 20A or 30A single locking receptacles. Device opening is 2 5/8" (67mm). For use with maximum female locking device of 1.58" diameter, and maximum male plug face of 2.25" diameter. NOTE: Brass covers and flanges are not interchangeable with aluminum or nonmetallic covers and flanges. Nonmetallic covers are interchangeable with aluminum flanges.



- This product meets the material restrictions of RoHS

SPECIFICATIONS

GENERAL INFO

Product Series: Omnibox
Component Type: Covers & Flanges

LISTING AGENCIES/THIRD PARTY CERTIFICATIONS

RoHS: Yes

BUY AMERICAN ACT COMPLIANCE

Country Of Origin: CHINA
Buy American Act Status: No