

N1302-DS



Color:



Gray

UPC Code: 07847737421

Country Of Origin: Mexico

*Eligible for ARRA funded projects > \$7,443,000



N1302-DS

Brand Features

Leviton's Industrial Grade AC Manual Motor Starter Switches provide safe, reliable control of a variety of motor loads. Typical applications include manual ON/OFF switching control of bottling lines, pumping machines, air compressors and other heavy manufacturing equipment. These motor controllers are available for both single-phase and three-phase applications. Leviton uses the finest materials available and the highest production standards to produce industrial switches of unmatched versatility and reliability.

Item Description

30 Amp, 600 Volt, Toggle In Type 1 Enclosure Double-Pole AC Motor Starting Switch, Industrial Grade, Grounded To Enclosure, Back & Side Wired, Suitable as a Motor Disconnect - GRAY

Technical Information

AC Horsepower Ratings

tsa_480vac: 10HP

tsa_600vac: 15HP

tsa_120vac: 2HP

tsa_240vac: 5HP

Electrical Specifications

Enclosure Rating: NEMA 1

Dielectric Voltage: Withstands 2200V for 1 min.

Grounding: Grounded To Enclosure

Overload UL20 Test: 100 cycles of OL at 4.8 times rated current

Temperature Rise: 50°C Max at full rated current

Voltage: 600 Volt

Amperage: 30 Amp

Endurance: 6,000 cycles inductive motor type load

Pole: 2

Environmental Specifications

Operating Temperature: -40C to 60C

Flammability: Rated V-0 per UL94

Material Specifications

Strap Material: Nickel Plated Brass

Face Material: Thermoplastic Polyester

Contacts: Silver-Cadmium .031 Thick

Terminal Screws: Nickel-Plated Brass 10-32

Toggle: Thermoplastic Polyester

Yoke: Nickel-Plated Brass

Enclosure Cover Material: Steel

Base Material: Thermoplastic Polyester

Mechanical Specifications

Product ID: Ratings are permanently marked on device

Terminal ID: T1, T2, L1, & L2 marked on back of device

Termination: Back & Side

Terminal Accom.: #10-#8 AWG

Torque Range: 25 inch pounds maximum

Product Features

Color: Gray

Standards and Certifications

Warranty: 10-Year Limited

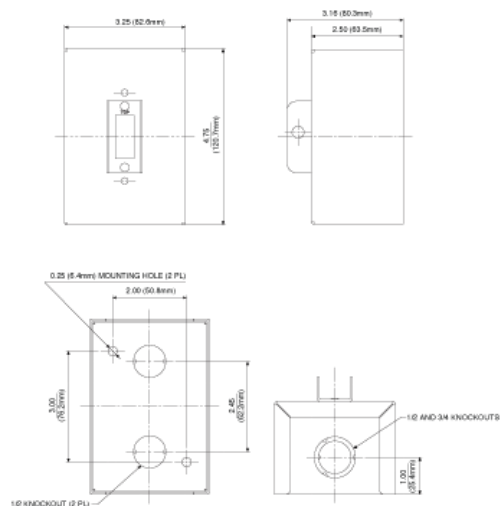
cUL per CSA C22.2 No. 111: File #E63969

UL 60947-4-1: supersedes UL 508

ANSI: C-73

NOM: NOM-ANCE

NEMA: WD-1 & WD-6



SPECIFICATION SUBMITTAL

JOB NAME:	CATALOG NUMBERS:	
JOB NUMBER:		

Leviton Manufacturing Co., Inc.

201 North Service Road, Melville, NY 11747

Teléfono: +1-800-323-8920 · FAX: +1-800-832-9538 · Tech Line (8:30AM-7:30PM E.S.T. Monday-Friday): +1-800-824-3005

Leviton Manufacturing of Canada, Ltd.

165 Hymus Boulevard, Pointe Claire, Quebec H9R 1E9 · Telephone: +1-800-469-7890 ·

FAX: +1-800-824-3005 · www.leviton.com/canada

Leviton S. de R.L. de C.V.

Lago Tana 43, Mexico DF, Mexico CP 11290 · Tel.: (+52)55-5082-1040 · FAX: (+52)5386-1797 · www.leviton.com.mx

Visit our Website at: www.leviton.com

© 2012 Leviton Manufacturing Co., Inc. Todos los derechos reservados. Subject to change without notice.

Leviton has a global presence.

If you would like to know where your local Leviton office is located please go to:

www.leviton.com/international/contacts/



**Leviton is the smart choice, providing the most comprehensive range of solutions to meet the needs of today's residential, commercial and industrial buildings. Leveraging more than a century of experience, Leviton helps customers create sustainable, intelligent environments through its electrical wiring devices, network and data center connectivity solutions, and lighting energy management systems. From switches and receptacles, to daylight harvesting controls, networking systems, and equipment for charging electric vehicles, Leviton solutions help customers achieve savings in energy, time and cost, all while enhancing safety.*