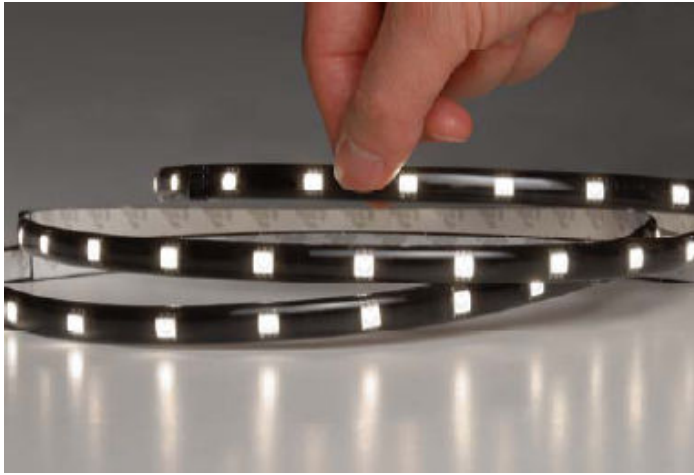


CATALOG NUMBER	TYPE
PROJECT	

InvisiLED-24V Classic



Key Features & Benefits

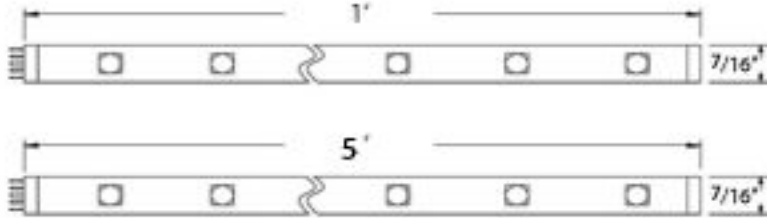
- Bright, low voltage, energy efficient linear LED InvisiLED, sold in 1-ft, 5-ft, and 2-in sections
- Five colors available: white, amber, blue, green, and red
- Low profile (3/8"×1/8"), easily fit any spaces
- Flexibility, bendable lengthwise or curved laterally using 2-inch tape light modules and joiner cables
- No polarity for connection, Class II 24V AC/DC powered
- Field cuttable every 2 LEDs (2 inch) at the end of a run
- Three mounting methods provided for different surfaces: self-adhesive tape, mounting clips, and retrofit channels
- Emits no UV or IR radiation
- UL (E204239) and CSA (239346) Listed

Ordering Matrix

Model Number	Description
	Project solution kits
	25 PCS LED-T24-1-WT
	15 PCS LED-T24-2IN-WT
	1 PC EN-24100-P-AR-T
	1 PC EN-24100-RB2-T
	2 PCS LED-TC-IC2
	1 PC LED-TC-IC6
	1 PC LED-TC-IC12
	4 PCS LED-TC-L
	2 PCS LED-TC-Y
1 PC LED-TC-X	
4 PCS LED-TC-EC	
25 PCS LED-T-CL	
LED-T24-1-RD/AM/BL/GR/WT	LED InvisiLED light, 1-ft section, w/ male and female ends
LED-T24-1-40-RD/AM/BL/GR/WT	LED tape light, 40 pieces bulk packed LED tape light 1-ft sections
LED-T24-5-RD/AM/BL/GR/WT	LED InvisiLED light, 5-ft section, w/ male and female ends
LED-T24-2IN-RD/AM/BL/GR/WT	LED InvisiLED light, 2-in section, w/ male and female ends
LED-T24-2IN-10-RD/AM/BL/GR/WT	LED tape light, 10 pieces bulk packed LED tape light 2-in sections
LED-TC-IC2	2" joiner cable
LED-TC-IC6	6" joiner cable
LED-TC-IC12	12" joiner cable
LED-TC-IC72	72" joiner cable
LED-TC-L	L connector for 24V InvisiLED
LED-TC-EC	End cap for 24V InvisiLED
LED-TC-X	X connector for 24V InvisiLED, w/ 1 male and 3 female connectors
LED-TC-Y	Y connector for 24V InvisiLED, w/ 1 male and 2 female connectors
EN-2460-P-AR-T	Plug in 24V 60W AC transformer for 24V InvisiLED-Classic
EN-24100-P-AR-T	Plug in 24V 100W AC transformer for 24V InvisiLED-Classic
EN-2460-RB2-T	Remote power supply 24V 60W AC transformer
EN-24100-RB2-T	Remote power supply 24V 100W AC transformer
LED-T-CL	Mounting clips for InvisiLED
LED-T-RC	Retrofit channel for 24V InvisiLED

CATALOG NUMBER	TYPE
PROJECT	

InvisiLED 24V-Classic



LED-T24-1- (color)

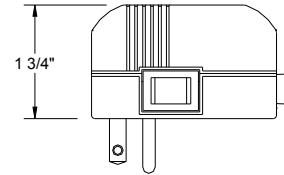
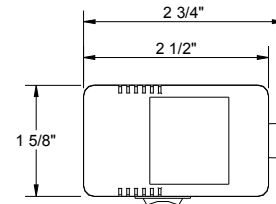
LED-T24-5- (color)

Product Specifications	
Light colors available	White (3500K); Amber (590 – 595nm); Blue (465 – 470nm); Green (515 – 520nm); Red (625 – 630nm)
Module lengths	1ft and 5ft (primary) 2 in
Module profile	7/16"×1/8" (10mm × 2.8mm)
LED type	SMD
Number of LEDs	12/ft
Beam angle	120
Operation voltage	24V AC/DC
Power consumption	2.0W/ft
Maximum forward current of single LED	20mA
Lumen Output	90 lm/ft (White); 22 lm/ft (Amber); 20 lm/ft (Blue); 60 lm/ft (Green); 35 lm/ft (Red)
Field cutting unit length	2 inch, every 2 LEDs
Recommended ambient environment	-4 °F–122 °F (-20°C – 50°C), relative humidity 95%
Run length per 100W Class II transformer	Min 1ft Max. 40ft
Lift	Up to 50,000 hours
Certifications	UL (E204239) & CSA (239346)

- W.A.C **InvisiLED** lights are intended for indoor dry and damp locations.
- **InvisiLED** tape lights are ideal for :
 - (1). Miniature coves and architectural accents
 - (2). Home theaters and entertainment rooms
 - (3). Under counters and bars
 - (4). Toe kick accent lighting
 - (5). Display windows
 - (6). Trade show booths
 - (7). Recreational vehicles
 - (9). Wine racks... and more

CATALOG NUMBER	TYPE
PROJECT	

LOW VOLTAGE ELECTRONIC TRANSFORMER MODEL EN-2460-P-AR-



Ordering Matrix		
Model	Finish	Accessories
EN-2460-P-AR-T	BK WT	See table below

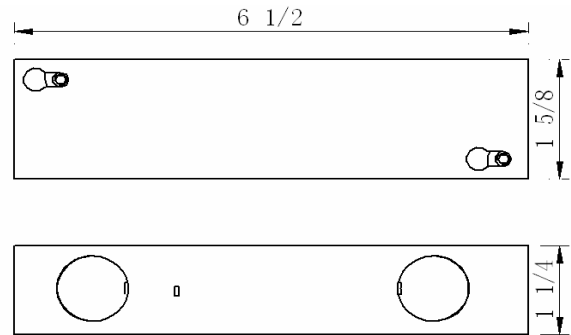
Ordering Example (model – finish) : EN-2460-P-AR-T

Product Details	
Description:	Low Voltage plug-in Class II electronic transformer designed to be used as portable or plug-and-play style transformer. Contains an on/off toggle switch at the base and a 6' detachable cord.
Catalog Number:	EN = Advanced electronic circuitry 2460 = 24 volt , 60 watt P = Portable Plug-In AR = Auto-Reset T= Drive 24V Classic
Input:	120V (50/60Hz)
Output:	24V
Min Load:	1W
Max Load:	60W
Max Input Amp:	0.53A (@ 120V)
Transformer Frequency:	25 khz. True RMS meter is required to read the high frequency output.
Listing:	U.L. listed. Certificating
Accessories:	MTB-01 – Multiple Terminal Block

Specification Features
<ul style="list-style-type: none"> U.L. 1310 listed Class II electronic low voltage transformer. Built-in auto reset, soft start, short protection, and overload protection circuit in order to protect the transformer. The soft start technology extends the lamp life by preventing the abrupt inrush current. Class II transformers are inherently protected and power limited, protecting the lighting system from both normal and abnormal short conditions 5 year WAC Lighting product warranty.

CATALOG NUMBER	TYPE
PROJECT	

LOW VOLTAGE ELECTRONIC TRANSFORMER MODEL EN-2460-RB2-T



Ordering Matrix		
Model	Finish	Accessories
[]	[]	
EN-2460-RB2-T	BK	<i>See table below</i>

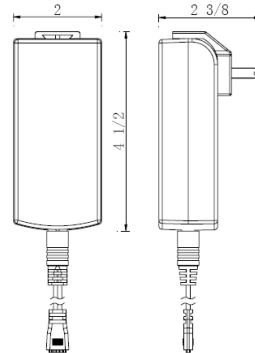
Ordering Example (model – finish) : EN-2460-RB2-T

Product Details	
Description:	Low Voltage plug-in Class II electronic transformer designed to be used as portable or plug-and-play style transformer. Contains an on/off toggle switch at the base and a 6' detachable cord.
Catalog Number:	EN = Advanced electronic circuitry 2460 = 24 volt , 60 watt RB2 = Class II Remote T= Drive 24V Classic
Input:	120V (50/60Hz)
Output:	24V
Min Load:	1W
Max Load:	60W
Max Input Amp:	0.53A (@ 120V)
Transformer Frequency:	25 khz. True RMS meter is required to read the high frequency output.
Listing:	U.L. listed ;Certificating;
Accessories:	MTB-01 – Multiple Terminal Block

Specification Features
<ul style="list-style-type: none"> • U.L. 2108 listed Class II electronic low voltage transformer. • Built-in auto reset, soft start, short protection, and overload protection circuit in order to protect the transformer. The soft start technology extends the lamp life by preventing the abrupt inrush current. • Class II transformers are inherently protected and power limited, protecting the lighting system from both normal and abnormal short circuits • 5 year WAC Lighting product warranty.

CATALOG NUMBER	TYPE
PROJECT	

LOW VOLTAGE ELECTRONIC TRANSFORMER MODEL EN-24100-P-AR-T



Ordering Matrix		
Model	Finish	Accessories
EN-24100-P-AR-T	BK	See table below

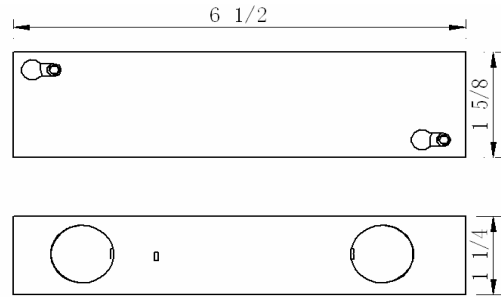
Ordering Example (model – finish) : EN-24100-P-AR-T

Product Details	
Description:	Low Voltage plug-in Class II electronic transformer designed to be used as portable or plug-and-play style transformer. Contains an on/off toggle switch at the base and a 6' detachable cord.
Catalog Number:	EN = Advanced electronic circuitry 24100 = 24 volt , 100 watt P = Portable Plug-In AR = Auto-Reset T= Drive 24V Classic
Input:	120V (50/60Hz)
Output:	24V
Min Load:	1W
Max Load:	100W
Max Input Amp:	0.83A (@ 120V)
Transformer Frequency:	25 khz. True RMS meter is required to read the high frequency output.
Listing:	U.L. listed ;Certificating;
Accessories:	MTB-01 – Multiple Terminal Block

Specification Features
<ul style="list-style-type: none"> • U.L. 1310 listed Class II electronic low voltage transformer. • Built-in auto reset, soft start, short protection, and overload protection circuit in order to protect the transformer. The soft start technology extends the lamp life by preventing the abrupt inrush current. • Class II transformers are inherently protected and power limited, protecting the lighting system from both normal and abnormal short circuits • 5 year WAC Lighting product warranty.

CATALOG NUMBER	TYPE
PROJECT	

LOW VOLTAGE ELECTRONIC TRANSFORMER MODEL EN-24100-RB2-T



Ordering Matrix		
Model	Finish	Accessories
EN-24100-RB2-T	BK	See table below

Ordering Example (model – finish) : EN-24100-RB2-T

Product Details	
Description:	Low Voltage plug-in Class II electronic transformer designed to be used as portable or plug-and-play style transformer. Contains an on/off toggle switch at the base and a 6' detachable cord.
Catalog Number:	EN = Advanced electronic circuitry 24100 = 24 volt , 100 watt RB2 = Class II Remote T= Drive 24V Classic
Input:	120V (50/60Hz)
Output:	24V
Min Load:	1W
Max Load:	100W
Max Input Amp:	0.83A (@ 120V)
Transformer Frequency:	25 khz. True RMS meter is required to read the high frequency output.
Listing:	U.L. listed ; Certificating;
Accessories:	MTB-01 – Multiple Terminal Block

Specification Features
<ul style="list-style-type: none"> U.L. 2108 listed Class II electronic low voltage transformer. Built-in auto reset, soft start, short protection, and overload transformer. The soft start technology extends the lamp life by preventing the abrupt inrush current. Class II transformers are inherently protected protection circuit in order to protect the and power limited, protecting the lighting system from both normal and abnormal short circuits 5 year WAC Lighting product warranty.