

FEATURES

- Available 2', 3', 4', or 8'
- Heavy die formed steel channel
- Snap-on cover. No tools required. No hardware to lose
- Rotary lock lampholders for positive lamp contact
- Channel ends double as joiners
- Individual or row mounting. Surface or suspended

PROJECT INFORMATION

Project Name _____

Type _____

Catalog No. _____

Date _____

CONSTRUCTION

Heavy gauge cold rolled steel housings fully assembled. Channel cover provides room-side access to ballast.

FINISH

White painted parts are treated with a five stage phosphate bonding process and finished with a high reflectance baked enamel.

BALLASTS

Energy efficient, thermally protected, automatic resetting, Class P, high power factor, sound rated A, unless otherwise specified. CEE NEMA Premium compliant.

ELECTRICAL

Standard class "P", thermally protected, auto-resetting HPF ballast, sound rated A. CEE NEMA Premium compliant. All ballast leads extend a minimum of 6" through access location. NEC/CEC-compliant ballast disconnect is standard.

CERTIFICATION

All luminaires are built to UL 1598 standards and bear appropriate UL and cUL or CSA labels. Damp location labeling is standard. Emergency-equipped fixtures labeled UL 924.

ORDERING INFORMATION

EXAMPLE CH4-132-E347-GLR

CH					E		
MODEL	SIZE	NO. OF LAMPS IN CROSS SECTION	LAMP TYPE	BALLAST	VOLTAGE	OPTIONS	
CH Heavy Duty Narrow Channel	2 2' 3 3' 4 4' 8 8'	1 One 2 Two	17 2', T8: 17 Watt 25 3', T8: 25 Watt 32 4', T8: 32 Watt 21 3', T5: 21 Watt 28 4', T5: 28 Watt 54 4', T5HO: 54 or 51 Watt	E Electronic T8, Instant Start <small>For a specific ballast vendor, show as option.</small>	U 120V-277V 347 347V	GLR Fast Blow Fuse GMF Slow Blow Fuse EL Emergency Battery Pack PAF Paint After Fabrication	

ACCESSORIES (ORDER SEPARATELY)	
ITB4	Hanger for close mounting on a T-Bar ceiling
CHWG3	3' Wire Guard
CHWG4	4' Wire Guard, 2 required for 8' fixture
CHRA3	3' Asymmetric Reflector ¹
CHRA4	4' Asymmetric Reflector, 2 required for 8' fixture ¹
CHR3	3' Symmetric Reflector ¹
CHR4	4' Symmetric Reflector, 2 required for 8' fixture ¹

¹Reflectors fit 1-lamp profiles only.

PHOTOMETRIC DATA

Test 8959 Test Date 1/8/03

LUMINAIRE DATA

Luminaire	CH4-140-LE CH Striplight 48" x 3 3/16" Single Lamp Striplight
Ballast	412-L-TC-P
Ballast Factor	0.95
Lamp	F40CW
Lumens per Lamp	1350
Watts	52
Shielding Angle	N/A
Spacing Criterion	0° = 1.24 90° = 1.65
Luminous Opening in Feet	Length: 4.00 Width: 0.27 Height: 0.00

ZONAL LUMEN SUMMARY

Zone	Lumens	%Lamp	%Fixt.
0-30	357	11.3	12.1
0-40	612	19.4	20.7
0-60	1242	39.4	42.0
0-90	2170	68.9	73.3
0-180	2959	93.9	100.0

ENERGY DATA

Total Luminaire Efficiency	93.9%
Luminaire Efficacy Rating (LER)	N/A
IESNA RP-1-1993 Compliance	Noncompliant
Comparative Yearly Lighting Energy Cost per 1000 Lumens	\$N/A based on 3000 hrs. and \$0.08 per KWH

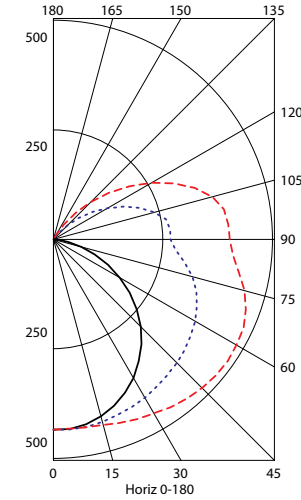
COEFFICIENTS OF UTILIZATION (%)

RCR	RW	80				70				50				0
		70	50	30	10	70	50	30	10	50	30	10	0	
1	92	86	81	76	87	82	77	72	73	69	66	49		
2	83	73	65	59	78	69	62	56	62	56	51	38		
3	74	63	54	47	70	59	52	45	53	46	41	30		
4	67	55	46	39	63	52	44	37	46	39	34	25		
5	62	49	39	33	58	46	38	31	41	34	29	21		
6	57	43	34	28	53	41	33	27	37	30	25	18		
7	52	39	30	24	49	37	29	23	33	26	21	15		
8	48	35	27	21	45	33	26	20	30	23	19	13		
9	45	32	24	19	42	31	23	18	28	21	17	12		
10	42	29	22	17	40	28	21	16	25	19	15	11		

RCR = Room Cavity Ratio

RC = Effective Ceiling Cavity Reflectance RW = Wall Reflectance

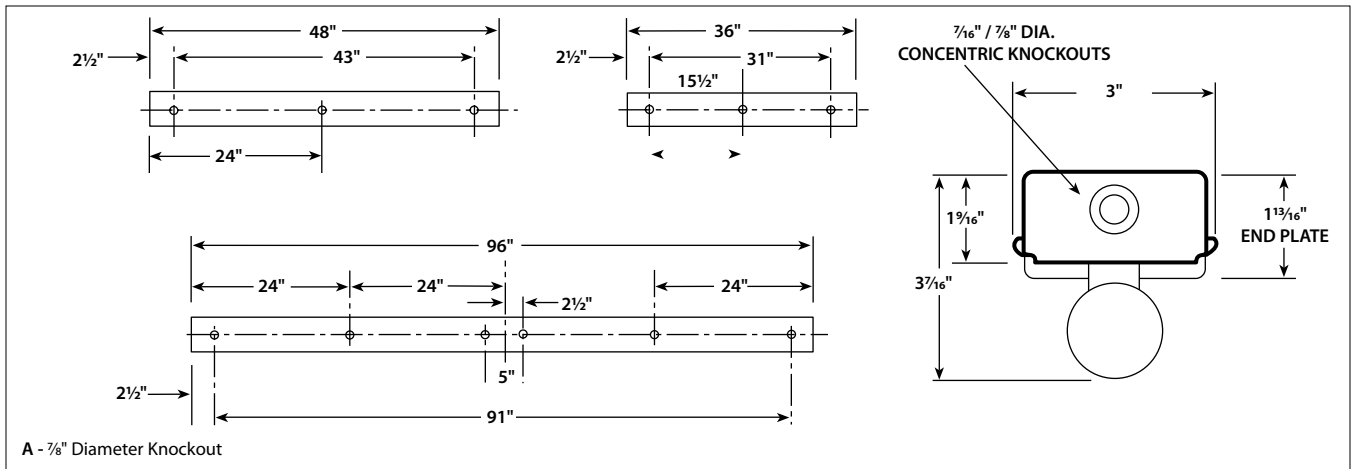
INDOOR CANDELA PLOT



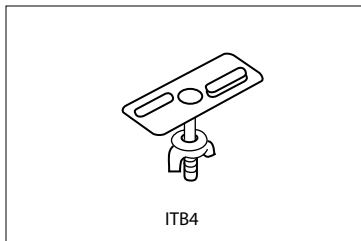
AVG. LUMINANCE (Candela/Sq. M.)

Average Luminance Angle	0.0	22.5	45.0	67.5	90.0
0	4325	4325	4325	4325	4325
30	4201	4362	4799	5144	5271
40	4059	4437	5256	5933	6167
45	3975	4524	5610	6470	6751
50	3845	4621	6063	7132	7489
55	3684	4796	6638	8028	8427
60	3488	5063	7435	9090	9608
65	3231	5495	8513	10612	11273
70	2914	6149	10112	12793	13609
75	2542	7278	12631	16251	17367
80	2066	9413	17448	22901	24623
85	1830	15553	32020	43227	47001

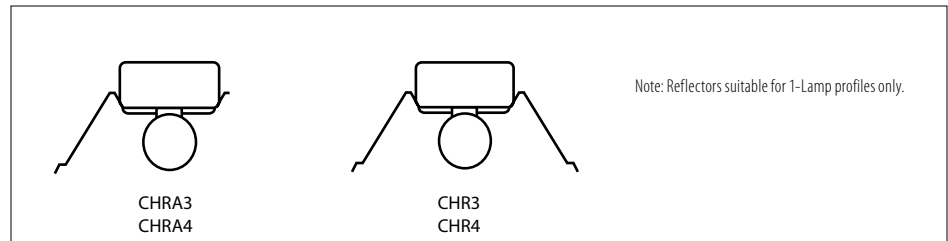
DIMENSIONAL DATA



MOUNTING DATA



ACCESSORY REFLECTORS FOR ONE LAMP PROFILE



NOTE: All dimensions are in inches; dimensions and specifications are subject to change without notice. Please consult factory or check sample for verification.