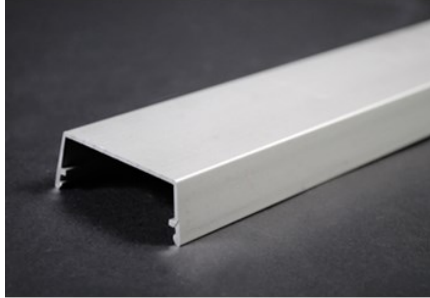


---

## AL2400 RACEWAY COVER

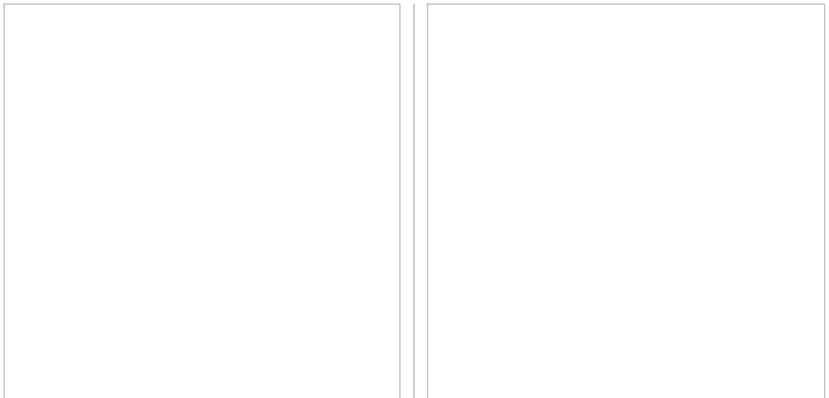
AL2400C | [Wiremold](#)



---

### FEATURES & BENEFITS

2" (51mm) wide, 6063-T5 extruded aluminum, satin anodized finish, .60" (1.5mm) nominal thickness. Cover packed (12) 5' (1.5m) lengths per carton.



- This product meets the material restrictions of RoHS

---

### SPECIFICATIONS

#### GENERAL INFO

Available Colors:

AL2400C - Satin Anodized

Product Series: AL2000, AL2400

Component Type: Raceway Base & Cover

#### LISTING AGENCIES/THIRD PARTY CERTIFICATIONS

RoHS: Yes

#### TECHNICAL INFORMATION

Material: Aluminum

Capacity: Single-Channel