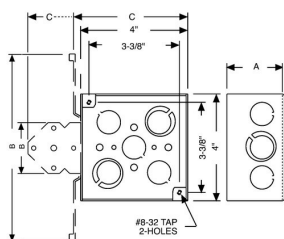


**4 IN SQUARE WELDED BRACKETED BOXES - 2-1/8 IN. DEEP WITH CONDUIT KO'S****4 in. Square Bracketed Boxes, 2-1/8 in. Deep - Welded with Conduit KO's  
600V, FM, Flush****A14**

Catalog #: 237

**APPLICATIONS**

RACO<sup>®</sup> Boxes are installed in walls or ceilings for lighting fixtures, switches or receptacles  
Square boxes are used where multiple conductor runs are split into two or more directions to bring power to a number of electrical devices

**PRODUCT FEATURES**

Reference the Box Selection section in the front of this catalog for complete description of bracket types and features  
Combination screw heads provide for faster installation  
TKO<sup>®</sup> Knockouts offer greater flexibility with RACO patented combination 1/2" and 3/4" knockout  
N/A

**UL LISTED**

File E195978

**COMPLIANCES**

All RACO<sup>®</sup> single gang, two gang, 4 in. square, and single gang gangable UL listed steel boxes are acceptable for use in 2-hour fire rated walls. For additional information, consult UL "Fire Resistance Directory" or the UL website at [www.ul.com](http://www.ul.com)  
600V Per UL 514-A, suitable for use without a bonding jumper in circuits up to 600 volts  
MSDS  
[www.hubbell-rtb.com/certifications/Hubbell-RACO\\_MSDS\\_for\\_Steel\\_Boxes\\_and\\_Covers.pdf](http://www.hubbell-rtb.com/certifications/Hubbell-RACO_MSDS_for_Steel_Boxes_and_Covers.pdf)

**FIRE RESISTANCE**

Acceptable for use in 2-hour rated walls

**GENERAL PRODUCT INFORMATION**

Wiring System: Conduit  
Country of Origin: USA

**CONFIGURATION**

Bracket Type: FM, for Metal or Wood Studs  
Bracket Setback: Flush  
Drawn or Welded: Welded  
Raised Ground: No  
Side Knockout(s): (6) 1/2 in. & (3) TKO<sup>®</sup>  
Bottom Knockouts(s): (3) 1/2 in. & (2) TKO<sup>®</sup>

**DRAWING DIMENSIONS**

Dimension A: 2-1/8 in.  
Dimension B: 7-5/8 in.  
Dimension C: 4-3/8 in.

**PRODUCT MEASUREMENTS**

Depth: 2-1/8 in.  
Cubic Inches (cm3): 30.3 (496.5)  
Wt. Ea. (Lbs.): 1.106  
Product Length (in.): 2.19  
Product Width (in.): 7.63  
Product Height (in.): 4.38

**PACKAGING**

Minimum Pack Qty.: 25  
Std. Pkg.: 25  
Product UPC-A Labeled: Yes  
Weight (Lbs. Per/C): 110.60  
Ship Carton Length (in.): 21.38  
Ship Carton Width (in.): 7.50  
Ship Carton Height (in.): 9.75  
Ctn Weight (Lbs.): 27.65  
Pallet Qty: 1500  
UPC Number: 050169002377  
I2of5: 50050169002372