



# 6" LED Wall Wash Downlight **LF6LEDG4** 120V-277V 0-10V Dimming

## APPLICATIONS:

LiteFrame LF6LED is a 6" specification grade LED wall wash downlight that utilizes remote phosphor technology to obtain color consistency, energy savings, and low maintenance costs. 50,000 hours minimum life up to 35°C (95°F) in open plenum applications.

## HOUSING:

One-piece 22 gauge non-corrosive steel platform. Pre-wired j-box with snap-on cover for easy access. Snap-in connection from driver compartment allows easy installation of light engine/trim assembly without tools above or below the ceiling and can be upgraded to accommodate technology improvements. Approve for 8 (4 in/4 out) No. 12 AWG conductors rated for 90°C through wiring.

## REFLECTOR:

High purity aluminum, Alzak, iridescence suppressed, semi-diffuse reflector. Self-trim standard. Painted white self-trim (WT) available as option.

## LED LIGHT ENGINE:

The LF6LED uses the Philips Fortimo DLM Gen 4 LED Module with remote phosphor technology. This technology provides controlled color consistency (3 SDCM) from fixture to fixture. The system is designed for optional life and lumen maintenance (>50,000 hours at 70% lumen maintenance). Both reflector and light engine assembly are mechanically retained to housing. The light engine comes standard with 80 CRI in all Kelvin temperatures.

## LED DRIVER:

The LF6LED utilizes the Philips Fortimo LED Driver specifically designed to optimize efficiency of the Fortimo DLM Module. Driver is designed to match the 50,000 hours minimum life expectancy of the system. Meets UL Class 2, inherent short circuit protection, self limited, overload protected. If critical temperatures are reached on driver or LED module, integrated thermal feedback loop will gradually reduce current to protect system life. Driver is universal 120V-277V. Optional Lutron Series A driver is also available.

## DIMMING:

Comes standard with 0-10V dimming capability. Flicker-free dimming to 10%. 0-10V control may consume up to 1mA. 0-10V, Lutron 2 wire, 3 wire, and EcoSystem dimming available to 1% and DMX with RDM (remote device management) dimming to less than 0.1%.

## INSTALLATION:

Adjustable Bar hangers included (Not with CP housing). Universal adjustable mounting brackets also accept 1/2" EMT conduit or 1 1/2" or 3/4" lathing channel (by others) or Prescolite 24" bar hangers (B24 or B6).

## CERTIFICATIONS:

CSA certified to US and Canadian safety standards. Suitable for wet locations. Approved for through wiring. Non-IC rated.

## WARRANTY:

5 year warranty. See [www.prescolite.com](http://www.prescolite.com) for details.

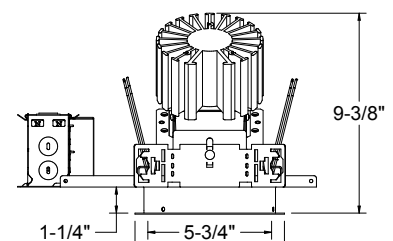
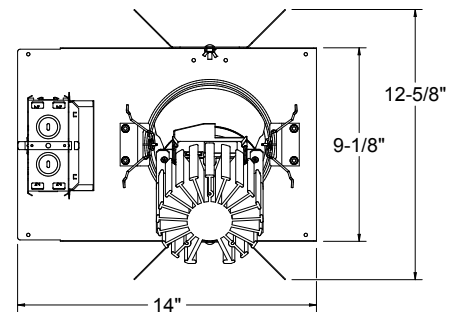
DATE: \_\_\_\_\_ TYPE: \_\_\_\_\_

FIRM NAME: \_\_\_\_\_

PROJECT: \_\_\_\_\_

# LiteFrame®

Ceiling Cutout: 6 1/4"  
Maximum Ceiling Thickness 1 1/4"  
For conversion to millimeters,  
multiply inches by 25.4  
Not to Scale



\* See page 2 for WW  
Alternative line art

CATALOG NUMBER:

EXAMPLE: LF6LEDG4WW-6LFLED5G430KWW  
EXAMPLE: LF6LED7G4120WVHDM-6LFLED7G435KWHWTWW

Order housing, reflector, and accessories separately

HOUSING/LED GENERATION	VOLTAGE	OPTIONS	TRIM	LED COLOR TEMP	REF. FINISH	LOWER REF. COLOR	REF. OPTIONS	ACCESSORIES
<input type="checkbox"/> <b>LF6LEDG4</b> 6" High Efficacy LED Housing	<input type="checkbox"/> <b>Blank</b> 120V-277V <input type="checkbox"/> <b>347</b>	<input type="checkbox"/> <b>Blank</b> Standard 0-10V dimming to 10% <input type="checkbox"/> <b>WW<sup>2</sup></b> Wall Wash <input type="checkbox"/> <b>CP</b> Chicago Plenum <input type="checkbox"/> <b>DM1CP</b> Chicago Plenum with 0-10V dimming to 1%	<input type="checkbox"/> <b>6LFLED5G4</b> 1100 Lumen Module <input type="checkbox"/> <b>6LFLED6G4</b> 1500 Lumen Module <input type="checkbox"/> <b>6LFLED7G4</b> 2000 Lumen Module	<input type="checkbox"/> <b>30K</b> <input type="checkbox"/> <b>35K</b> <input type="checkbox"/> <b>40K</b>	<input type="checkbox"/> <b>Blank</b> Semi-Diffuse	<input type="checkbox"/> <b>Blank</b> Clear <input type="checkbox"/> <b>CG</b> Champagne Gold <input type="checkbox"/> <b>BL</b> Black <input type="checkbox"/> <b>WE</b> Wheat <input type="checkbox"/> <b>LW</b> Light Wheat <input type="checkbox"/> <b>PW</b> Pewter <input type="checkbox"/> <b>WH<sup>1</sup></b> White Paint	<input type="checkbox"/> <b>WT</b> White Trim <input type="checkbox"/> <b>TRG</b> Trim ring gasket <input type="checkbox"/> <b>WW<sup>2</sup></b> Wall Wash <input type="checkbox"/> <b>WF</b> White Flange	<input type="checkbox"/> <b>B24<sup>5</sup></b> Set of two 24" bar hangers for T-bar ceilings <input type="checkbox"/> <b>B6<sup>5</sup></b> Set of two (2) bar hangers for ceiling joist up to 24" centers <input type="checkbox"/> <b>LFSC6</b> 6" reflector screw cover <input type="checkbox"/> <b>Signos6</b> Architectural glass elements. Refer to specification sheets ARCH-SIG-001 and -003 <input type="checkbox"/> <b>LiteGear<sup>4</sup></b> Inverter, single phase central lighting, 125VA-250VA <input type="checkbox"/> <b>LPS Series<sup>4</sup></b> LitePower micro-inverter, 20VA-55VA

Use with HDM/DM1/2DM/DMX dimming option:  
Match Housing to Trim Output

- |   |  |   |
|---|--|---|
| <input type="checkbox"/> <b>LF6LED5G4</b><br><input type="checkbox"/> <b>LF6LED6G4</b><br><input type="checkbox"/> <b>LF6LED7G4</b> | <input type="checkbox"/> <b>120</b><br><input type="checkbox"/> <b>277</b> | <input type="checkbox"/> <b>WW<sup>2</sup></b><br>Wall Wash<br><input type="checkbox"/> <b>HDM<sup>3</sup></b><br>Hi-Lume 1% 3-wire/EcoSystem LED Driver<br><input type="checkbox"/> <b>2DM<sup>3</sup></b><br>Hi-Lume 1% 2-wire LED Driver (120V only)<br><input type="checkbox"/> <b>DM1<sup>3</sup></b><br>0-10V dimming to 1%<br><input type="checkbox"/> <b>DMX<sup>3</sup></b><br>DMX with RDM dimming to <0.1% |
|---|--|---|

### NOTES:

- Requires WT option also
- WW options required on both housing and trim
- For HDM, DM1, DMX, & 2DM options, housing output must match trim output
- See Central Inverter compatibility note and web links on page 2
- Accessories should be selected with CP housing if required

**prescolite**  
A Division of Hubbell Lighting, Inc.

In a continuing effort to offer the best product possible we reserve the right to change, without notice, specifications or materials that in our opinion will not alter the function of the product.  
Web: [www.prescolite.com](http://www.prescolite.com) • Tech Support: (888) 777-4832

**LFR-LED-026**

STANDARD 0-10V DIMMING

ALTERNATIVE DIMMING TO 1% & 0.1%

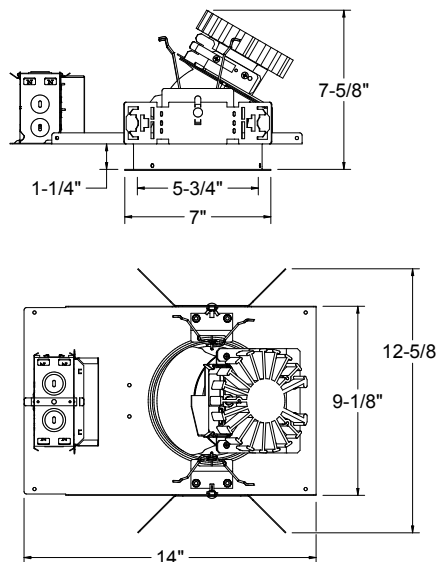
# PHOTOMETRIC DATA

## LiteFrame - 6" LF6LEDG4 Downlight

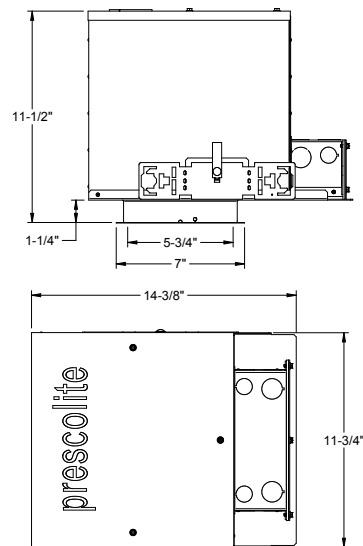
DRIVER DATA	LF6LED5G4 30K	LF6LED7G4 30K
Input Voltage	120-277V	120-277V
Input Frequency	50/60 Hz	50/60 Hz
Input Current	0.12A (120v) 0.052 (277v)	0.22A (120v) 0.10 (277v)
Input Power	14.5W	26.5W
Constant Current Output	200-1000mA	200-1000mA
Power Factor	≥0.90	≥0.90
THD	<20%	<20%
EMI Filtering	FCC 47CFR Part 15, Class A	FCC 47CFR Part 15, Class A
Operating Temperature	-20°C to 40°C	-20°C to 40°C
Dimming	0-10V	0-10V

Over-voltage, over-current, short-circuit protected

\*Power consumption and photometric output may vary slightly with HDM option.



**FIELD CONFIGURABLE WALL WASH ORIENTATION**



**LF6LEDG4 CP**

**Dimming Compatibility Table**

Dimming Ballast	Manufacturer	Web Link
DM/DM1	Lutron DTV	<a href="http://bit.ly/11jSvZg">http://bit.ly/11jSvZg</a>
DM/DM1	Leviton AWRMG-7xx, AWSMG-7xx, AWSMT-7xx	<a href="http://bit.ly/1BJn2R9">http://bit.ly/1BJn2R9</a>
HDM	Lutron	<a href="http://bit.ly/1vtjHAL">http://bit.ly/1vtjHAL</a>
2DM	Lutron	<a href="http://bit.ly/1S4WjXK">http://bit.ly/1S4WjXK</a>

### DMX

See instruction sheet on [www.prescolite.com](http://www.prescolite.com) for connection & installation information.

Other useful links: <http://www.eldoled.com/led-drivers/powerdrive/50-watt/ac-561s/>

### Central Inverters

For full fixture output in back-up mode, we recommend you visit [www.dual-lite.com](http://www.dual-lite.com) for your Central Lighting Inverter options. Please contact your local Hubbell representative for any assistance with proper sizing and loading of your inverter selection. Central lighting inverters must be ordered separately.

**LiteGear:** [www.dual-lite.com/products/litegear\\_lg\\_series](http://www.dual-lite.com/products/litegear_lg_series)

**LPS Series:** [www.dual-lite.com/products/lps](http://www.dual-lite.com/products/lps)



Web: [www.prescolite.com](http://www.prescolite.com) • Tech Support: (888) 777-4832  
 701 Millennium Boulevard • Greenville, SC 29607 U.S.A. • Phone (864) 678-1000  
 Copyright ©2017 Prescolite, Inc., a division of Hubbell Lighting, Inc. All Rights Reserved  
 Specifications subject to change without notice. • Printed in U.S.A. • LFR-LED-026 • 2/17/17



# PHOTOMETRIC DATA

## LiteFrame - 6" LF6LEDG4 Downlight Central Inverters

---



Web: [www.prescolite.com](http://www.prescolite.com) • Tech Support: (888) 777-4832  
701 Millennium Boulevard • Greenville, SC 29607 U.S.A. • Phone (864) 678-1000  
Copyright ©2017 Prescolite, Inc., a division of Hubbell Lighting, Inc. All Rights Reserved  
Specifications subject to change without notice. • Printed in U.S.A. • LFR-LED-026 • 2/17/17



**HUBBELL**  
Lighting, Inc.