

DESCRIPTION

Baffle with reflector in the 6" trim family for use in Halo and All-Pro recessed downlighting.

Catalog #		Type
Project		
Comments		Date
Prepared by		

SPECIFICATION FEATURES

Torsion springs pull trim tight against ceiling. Self flanged trim with gloss white trim ring. Trim consists of complete baffle and full reflector. Baffle available in white or black.

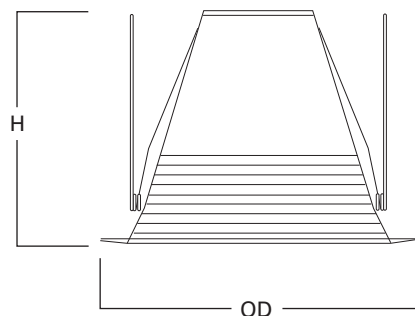
Lamp Listings - GU24

H724ICAT	CF15/R30/GU24
H724ICATL	
H724RICAT	CF13/GU24 (spiral)
H724RICATL	

Lamp Listings - CFL (4-Pin)

H270ICAT	13W DTT/13W TTT
H270RICAT	
H271ICAT	18W DTT/18W TTT
H271RICAT	
H272ICAT	26W DTT/26W TTT
H272RICAT	
H273ICAT1D	26W DTT/26W TTT, 32W TTT
H273RICAT1D	

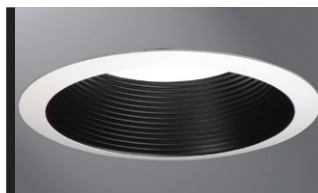
EI2072AT	26W DTT/26W TTT
EI2072RAT	



Height: 5-3/8" [136mm]
Outside Diameter: 7-1/4" [184mm]

ORDERING INFORMATION

Trim	Finish
ERT772 = 6" Reflector	TS = Gloss white trim ring, black baffle with white reflector, torsion spring WHTTS = Gloss white trim ring, white baffle with white reflector, torsion spring



ERT772TS
White Trim, Black Baffle with
White Reflector



ERT772WHTTS
White Trim, White Baffle
with White Reflector

ERT772

6-Inch Baffle with Reflector