

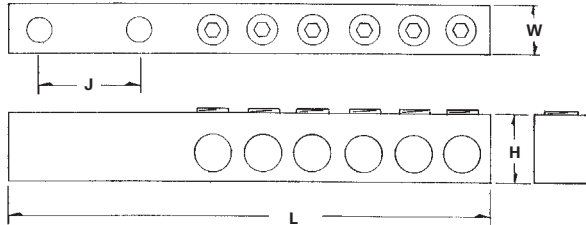
TYPE PET

Features

- Available in four, six, or eight conductor configurations in four wire ranges
- Predrilled 1/2" mounting holes
- Manufactured from high strength 6061-T6 aluminum alloy
- Rated for 600 volts

Benefits

- Provides multiple conductor installation for a wide range of conductors
- Allows easy attachment. May be bolted back to back for heavy duty applications
- Suitable for use with either copper or aluminum conductors
- Ensures reliability



C

Catalog Number	Wire Range	Number of Conductors	Bolt Size	Diameter of Mounting Hole	Dimensions				Hex Size	Recommended Torque-Inch Lbs.
					H	J	W	L		
PET-4-350-Z	350kcmil-12	4	1/2	9/16	1-3/8	1-3/4	1	6-7/8	5/16	350
PET-6-350-Z	350kcmil-12	6	1/2	9/16	1-3/8	1-3/4	1	8-11/16	5/16	350
PET-8-350-Z	350kcmil-12	8	1/2	9/16	1-3/8	1-3/4	1	10-1/2	5/16	350
PET-4-500-Z	500kcmil-2	4	1/2	9/16	1-5/8	1-3/4	1	7-15/16	5/16	450
PET-6-500-Z	500kcmil-2	6	1/2	9/16	1-1/8	1-3/4	1	10-3/16	5/16	450
PET-8-500-Z	500kcmil-2	8	1/2	9/16	1-5/8	1-3/4	1	12-7/16	5/16	450
PET-4-750-Z	750kcmil-1/0	4	1/2	9/16	1-3/4	1-3/4	1-3/16	8-11/16	3/8	500
PET-6-750-Z	750kcmil-1/0	6	1/2	9/16	1-3/4	1-3/4	1-3/16	11-15/16	3/8	500
PET-8-750-Z	750kcmil-1/0	8	1/2	9/16	1-3/4	1-3/4	1-3/16	13-15/16	3/8	500

All wire sizes, unless noted otherwise, are American Wire Gauge (AWG)
DE-OX Inhibitor is recommended for all aluminum terminations.