



114TB

**APPLICATION**

- Single meter position
- Designed to receive watt-hour meters that meet ANSI C12.10
- Overhead/underground feed
- Surface mount
- Top or bottom load exit

**CONSTRUCTION**

- Type 3R construction
- Safety socket with factory installed test/bypass facilities<sup>1</sup>
- Snap type sealing ring included
- 5th jaw provision at nine o'clock – 114TB only
- Provisions for 2 AW base caps or hub kits on top
- Padlock provision
- Ring style

**STANDARDS**

- UL 414 listed, complies with ANSI C12.7

**FINISH**

- ANSI 61 gray acrylic electrocoat finish

**ACCESSORIES**

- Fifth jaw kit — catalog #50371
- Center and offset pole mounting brackets
- Bussed gutters, see page 68
- AW hubs
- Screw type sealing ring — catalog #25016D
- Steel or clear lexan covers for socket opening

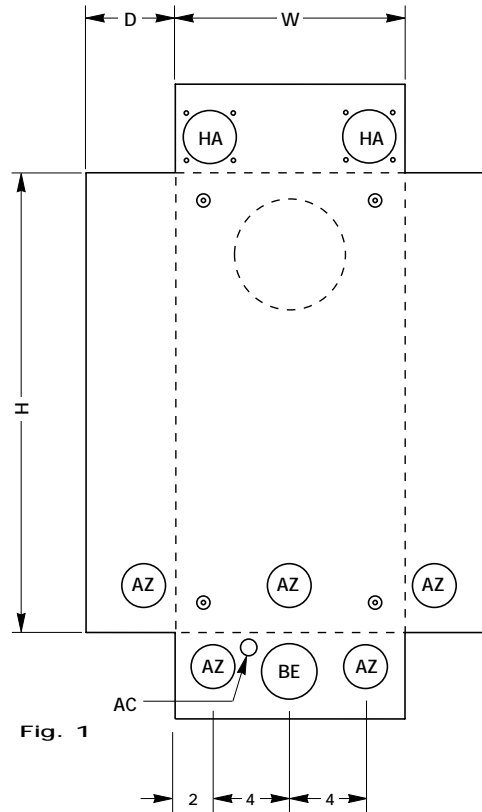
**Overhead/Underground-Surface Mount**

CATALOG NUMBER	AIC RATING	BRANCH CIRCUITS	AMPACITY		VOLTAGE	SERVICE TYPE	NUMBER OF JAWS	HUB PROV.	CONDUCTOR LUG RANGE		FIGURE NUMBER	DIMENSIONS (INCHES)		
			MAX.	CONT.					PHASE CONDUCTOR LINE/LOAD	NEUTRAL CONDUCTOR		HEIGHT (H)	WIDTH (W)	DEPTH (D)
114TB	†	NONE	125	100	600	1Ø 3W	4	AW	14 AWG - 2/0 AWG	14 AWG - 1/0 AWG	Fig. 1	24	12	4 5/8
115TB	†	NONE	125	100	600	3Ø 3W	5	AW	14 AWG - 2/0 AWG	14 AWG - 1/0 AWG	Fig. 1	24	12	4 5/8
117TB	†	NONE	125	100	600	3Ø 4W	7	AW	14 AWG - 2/0 AWG	14 AWG - 1/0 AWG	Fig. 1	24	12	4 5/8

<sup>1</sup> = 60-in. lbs torque recommended for circuit-closing nut

† = Meter sockets on this page have certain short circuit current ratings when used in conjunction with the tables on page 72

**Note:** For 208/120V, 1Ø 3W systems, order 4-jaw unit and a 5th jaw kit



**Knockouts — Conduit Sizes**

AC = 1/2" - 1/4"  
 AZ = 2" - 1 1/2" - 1 1/4" - 1"  
 BE = 2 1/2" - 2" - 1 1/2" - 1 1/4"  
 HA = AW HUB

**General prefix description**

R	Rain tight/Rain proof
U or UG	Underground feed

**General suffix description**

CD	Continuous duty
CT	Current transformer rated socket
CTB	Back connected CT rated socket
F	Semi-flush
HRTCT	Hinged rain tight CT enclosure
MCC	Manual circuit closing
MS	Manufacturing specification — see MS descriptions
MTB	Safety socket with main breaker
MTBH	Safety socket with higher AIC rating
MTBL	Safety socket with load center
MTBP	Safety socket with pull-out switch
RTCT	Rain tight CT enclosure
SS	Stainless steel
TB	Test block safety socket

**MS number description**

MS Number	Product	Difference
MS15	MTB(P) Series	Changes voltage rating of device from 240 Volts to 480 Volts
MS21	U204	Fabricated with an AW Hub provision on top end
MS45	MTBH Series	Changes short circuit rating to 22K AIC
MS60	2012, 2013	Units have an AW Hub provision for overhead feed
MS66	M1M100PD	Landing lugs are replaced by landing pads with studs
MS68	204	Has 2-inch hub installed
MS73	All Meter Enclosures	Replaces snap type sealing ring with screw type sealing ring
MS82	UG204(F)	Replaces 250kcmil line lugs with 350kcmil line lugs

**Example**

