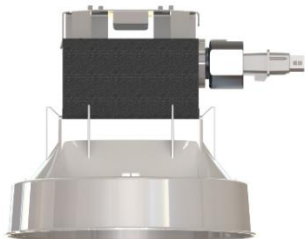


TERRALUX

TLK-DR6A

LED Retrofit for 5" to 7" Ø Downlights w/ Horizontal Lamp



SPECIFICATION

APPLICATION

Fully integrated, self-contained LED retrofit kit installs quickly and easily into 5" to 7" Ø commercial-grade recessed downlights by others. Replaces horizontally mounted CFL, providing up to 60% energy savings.

MOUNTING

Provided with adjustable 90° quick-connector, J-box cover adaptor plate, and mounting hardware.

LED

Provided with high efficiency Nichia® LED chips. Color variation no greater than 3-step MacAdam Ellipses. Diffuse optic insures no pixilation and smooth, comfortable light output.

DRIVER

Provided with LED driver designed and manufactured by TERRALUX. The driver includes LEDSENSE® thermal fold-back, allowing maximum light output in any

environment while assuring long-term reliability. Advanced electronics continuously monitor temperatures to ensure LED power does not exceed limits tested by the LED manufacturer to yield no less than 70% of initial light output at more than 60,000 hours of operation.

ENVIRONMENTAL

Functions normally within an operating temperature range of -20° C. to 55° C. (-4° F. to 131° F.) at 0 to 95% relative humidity.

PERFORMANCE

LED retrofit kit includes an isolation optic to retain the original fixture's photometric characteristics. Provides color quality ≥ 80 CRI, $R9 \geq 15$, and maintains 70% lumen output at more than 60,000 hours per IES TM-21-11, based on the LED manufacturer's measurement per IES LM-80-08 @ 10,000 hours. To be extended as additional data becomes available.

FEATURES

- ✓ Fast, easy installation – provides energy savings to 60%
- ✓ Light output: equal to 1x13, 1x18, 2x13, 2x18, 1x42 or 2x26 CFL
- ✓ Efficacy: up to 119 lm/W delivered
- ✓ CCT: 2700K, 3000K, 3500K or 4000K
- ✓ CRI: ≥ 80 at all CCTs
- ✓ Lumen Maintenance: L70 $> 60,000$ hours
- ✓ Patents: 7,777,430; 8,400,081; Additional Pending
- ✓ [Complete Replacement Fixture with LED Retrofit Kit](#)



REGULATORY COMPLIANCE

LED retrofit kit includes the following regulatory and compliance approvals: ENERGY STAR® 2.0 – Luminaires; UL 1598C Classified LED Retrofit Kit – damp locations; CSA Standard C22.2 No. 250.0-08; FCC Part 15, Unintentional Radiators Class A; RoHS.

QUALITY & RELIABILITY

Designed and manufactured within an ISO 9001:2008 certified Quality Management System. Product design validated by Reliability Prediction analysis, based on Telcordia SR-332 Ed. 3. Demonstrated Mean Time Between Failure (MTBF) > 3.4 Million hours with a 90% confidence level, which equates to an annual failure rate (AFR) of $< 0.25\%$.

WARRANTY

10-year limited warranty. Complete warranty terms located at <http://terralux.com/terralux-warranty/>

MODEL & OPTIONS

| TLK-DR6A | | | | | DO | |
|---|---|--|--|--------------------|---|--|
| MODEL | DRIVER | LIGHT OUTPUT | CCT | OPTIC | OPTIONS | |
| TLK-DR6A = Downlight retrofit, horizontal, 6" | A* = 120/277V, non-dimming B = 120/277V, 0-10V dimming | 113 = 1x13 CFL equal 118 = 1x18 CFL equal 213 = 2x13 CFL equal 218 = 2x18 CFL equal 142 = 1x42 CFL equal 226 = 2x26 CFL equal | 27 = 2700K 30 = 3000K 35 = 3500K 40 = 4000K | DO = Diffuse optic | 0 = None BB** = Battery backup NAC = No armored conduit to driver | |

* Available only for -226 light output selection. Not compatible with options -BB or -NAC.

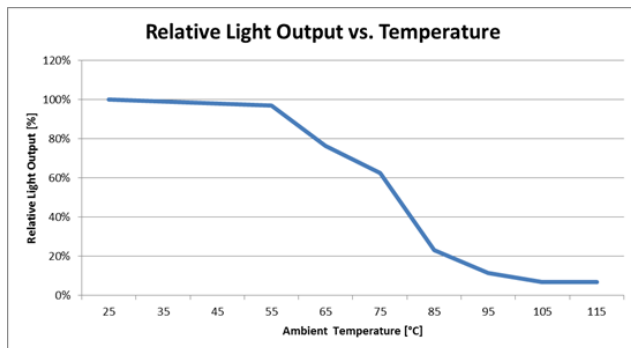
** Battery Backup Accessory Kit (UL Classified for field installation) is required when battery backup option (-BB) is selected. Select from table below.

BATTERY BACKUP ACCESSORY KIT (Select only one model)

| Model | Test Switch > For Light Output Option |
|------------------|---------------------------------------|
| TLMA-123000139-A | Integral > 113, 118, 213, 218, 142 |
| TLMA-123000153-A | Remote > 113, 118, 213, 218, 142 |
| TLMA-123000154-A | Integral > 226 |
| TLMA-123000155-A | Remote > 226 |

PERFORMANCE

| TLK-DR6A | | | | | | | | |
|-----------------------------------|---------|-------|---------|-------|---------|-------|---------|-------|
| Color Temperature (CCT) | 2700K | | 3000K | | 3500K | | 4000K | |
| CRI Minimum [typical] | 80 [83] | | 80 [83] | | 80 [83] | | 80 [83] | |
| R9 | 15 | | 16 | | 22 | | 21 | |
| Light Output [lumens] | @120V | @277V | @120V | @277V | @120V | @277V | @120V | @277V |
| 113 (1x13W CFL equivalent) | 481 | 476 | 510 | 511 | 586 | 610 | 591 | 603 |
| 118 (1x18W CFL equivalent) | 661 | 654 | 701 | 702 | 805 | 838 | 812 | 829 |
| 213 (1x26W, 2x13W CFL equivalent) | 1087 | 1075 | 1153 | 1154 | 1325 | 1379 | 1336 | 1364 |
| 218 (1x32W, 2x18W CFL equivalent) | 1347 | 1302 | 1483 | 1446 | 1603 | 1675 | 1670 | 1699 |
| 142 (1x42W CFL equivalent) | 1510 | 1440 | 1665 | 1647 | 1832 | 1867 | 1869 | 1904 |
| 226 (2x26W CFL equivalent) | 1957 | 2111 | 2254 | 2244 | 2362 | 2386 | 2380 | 2404 |
| Power [watts] | @120V | @277V | @120V | @277V | @120V | @277V | @120V | @277V |
| 113 (1x13W CFL equivalent) | 4.95 | 5.41 | 4.95 | 5.41 | 4.95 | 5.41 | 4.95 | 5.41 |
| 118 (1x18W CFL equivalent) | 6.81 | 7.44 | 6.81 | 7.44 | 6.81 | 7.44 | 6.81 | 7.44 |
| 213 (1x26W, 2x13W CFL equivalent) | 13.00 | 14.20 | 13.00 | 14.20 | 13.00 | 14.20 | 13.00 | 14.20 |
| 218 (1x32W, 2x18W CFL equivalent) | 17.10 | 17.50 | 17.10 | 17.50 | 17.10 | 17.50 | 17.10 | 17.50 |
| 142 (1x42W CFL equivalent) | 19.70 | 20.00 | 19.70 | 20.00 | 19.70 | 20.00 | 19.70 | 20.00 |
| 226 (2x26W CFL equivalent) | 26.90 | 27.10 | 26.90 | 27.10 | 26.90 | 27.10 | 26.90 | 27.10 |
| Efficacy [lm/W] | @120V | @277V | @120V | @277V | @120V | @277V | @120V | @277V |
| 113 (1x13W CFL equivalent) | 97 | 88 | 103 | 94 | 118 | 113 | 119 | 111 |
| 118 (1x18W CFL equivalent) | 97 | 88 | 103 | 94 | 118 | 113 | 119 | 111 |
| 213 (1x26W, 2x13W CFL equivalent) | 84 | 76 | 89 | 81 | 102 | 97 | 103 | 96 |
| 218 (1x32W, 2x18W CFL equivalent) | 79 | 74 | 87 | 83 | 94 | 96 | 98 | 97 |
| 142 (1x42W CFL equivalent) | 77 | 72 | 85 | 82 | 93 | 93 | 95 | 95 |
| 226 (2x26W CFL equivalent) | 73 | 78 | 84 | 83 | 88 | 88 | 88 | 89 |



NOTES

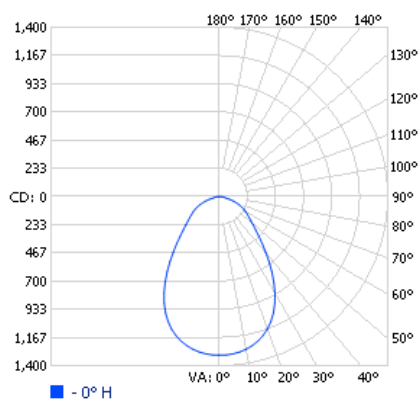
Tested by third party per IESNA-LM79-08.

All specifications subject to tolerance of $\pm 10\%$.

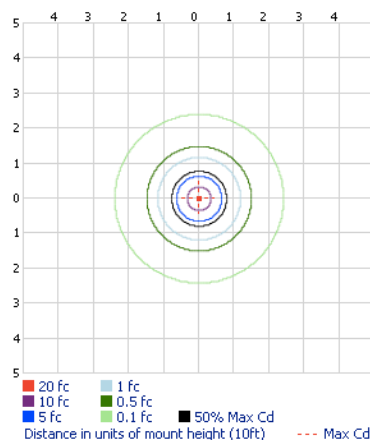
Typical performance @ 25° C. heatsink temperature, Tc. See **Relative Light Output vs. Temperature** (left) for the effect of LEDSENSE® thermal fold-back on light output at various operating temperatures.

PHOTOMETRY

Polar Candela Distribution



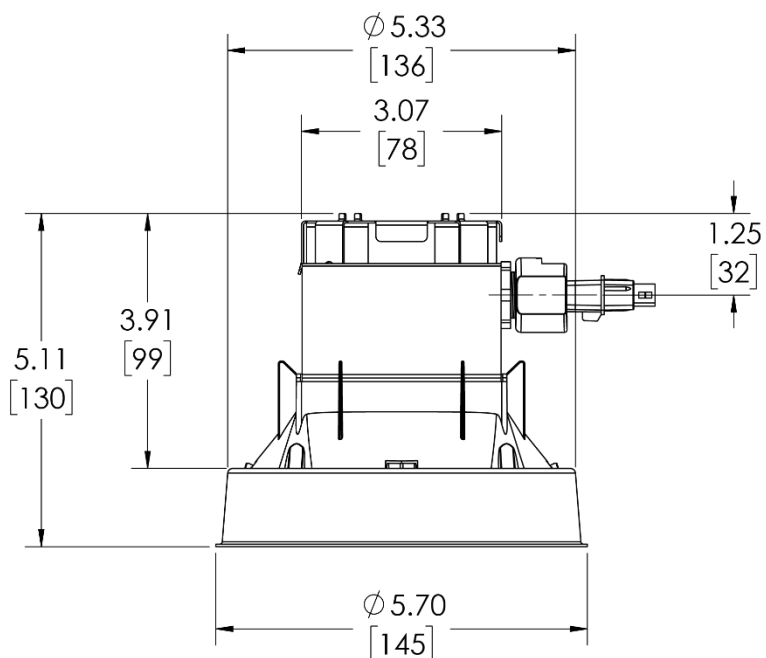
Isofootcandle Plot



Illuminance at a Distance

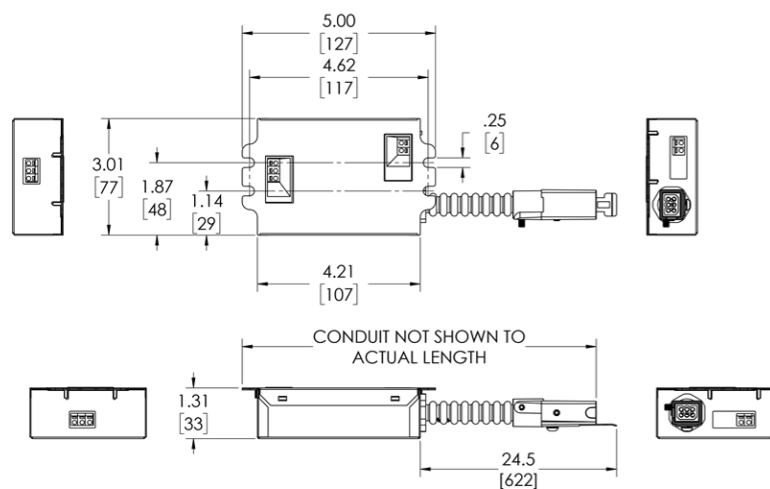
| HEIGHT(FT) | CENTER BEAM FOOTCANDLE | BEAM SPREAD(FT) | | FIELD SPREAD(FT) | |
|------------|---------------------------|-----------------|----------|------------------|----------|
| | | HORIZONTAL | VERTICAL | HORIZONTAL | VERTICAL |
| 2.0 | 328.1 FC | 3.1 | 3.1 | 11.9 | 11.9 |
| 4.0 | 82.0 FC | 6.3 | 6.3 | 23.8 | 23.8 |
| 6.0 | 36.5 FC | 9.4 | 9.4 | 35.7 | 35.7 |
| 8.0 | 20.5 FC | 12.6 | 12.6 | 47.5 | 47.5 |
| 10.0 | 13.1 FC | 15.7 | 15.7 | 59.4 | 59.4 |
| | | BEAM ANGLE | | FIELD ANGLE | |
| | | 76.2° | 76.2° | 142.8° | 142.8° |

DIMENSIONS



Driver with Armored Conduit

Provided as standard



Driver with Non-Armored Conduit

Provided with option -NAC and/or option -BB

