



SIRIUS SOFT STARTER, S0, 25A,  
11KW/400V, 40 DEGR., AC 200-480V,  
AC/DC 110-230V, SCREW TERMINALS

| General details:   |  |   |
|--|--|---|
| <b>product brand name</b>  |  | SIRIUS                                  |
| <b>Product equipment</b>   |  |   |
| <ul style="list-style-type: none"> <li>integrated bridging contact system</li> </ul>                                       |  | Yes                                     |
| <ul style="list-style-type: none"> <li>thyristors</li> </ul>   |  | Yes                                     |
| <b>Product function</b>  |  |   |
| <ul style="list-style-type: none"> <li>intrinsic device protection</li> </ul>  |  | Yes                                     |
| <ul style="list-style-type: none"> <li>motor overload protection</li> </ul>  |  | Yes                                     |
| <ul style="list-style-type: none"> <li>evaluation of thermal resistor motor protection</li> </ul>                          |  | No                                      |
| <ul style="list-style-type: none"> <li>reset external</li> </ul>   |  | Yes                                     |
| <ul style="list-style-type: none"> <li>adjustable current limitation</li> </ul>  |  | Yes                                     |
| <ul style="list-style-type: none"> <li>inside-delta circuit</li> </ul>   |  | No                                      |
| <b>Product component / outlet for enine brake</b>  |  | No                                      |
| <b>Item designation</b>  |  |   |
| <ul style="list-style-type: none"> <li>according to DIN EN 61346-2</li> </ul>  |  | Q                                       |
| <ul style="list-style-type: none"> <li>according to DIN 40719 extendable after IEC 204-2 / according to IEC 750</li> </ul> |  | G                                       |
| Power Electronics:   |  |   |
| <b>product designation</b>   |  | soft starters for standard applications |
| Operating current  |  |   |

|   |    |             |
|---|----|-------------|
| • at 40 °C / rated value  | A  | 25          |
| • at 50 °C / rated value  | A  | 23          |
| • at 60 °C / rated value  | A  | 21          |
| <b>Emitted mechanical power / for three-phase servomotors</b>   |    |             |
| • at 230 V / at standard switching / at 40 °C   |    |             |
| • rated value   | W  | 5,500       |
| • at 400 V / at standard switching / at 40 °C   |    |             |
| • rated value   | W  | 11,000      |
| <b>yielded mechanical performance (hp) / for three-phase squirrel cage motors / at 200/208 V / at standard circuit / at 50 °C / rated value</b> | hp | 5           |
| <b>Operating frequency</b>  |    |             |
| • rated value   | Hz | 50 ... 60   |
| <b>Relative negative tolerance / of the operating frequency</b>   | %  | -10         |
| <b>Relative positive tolerance / of the operating frequency</b>   | %  | 10          |
| <b>Operating voltage / with standard circuit / rated value</b>  | V  | 200 ... 480 |
| <b>Relative negative tolerance / of the operating voltage / with standard circuit</b>   | %  | -15         |
| <b>Relative positive tolerance / of the operating voltage / with standard circuit</b>   | %  | 10          |
| <b>Minimum load in % of I<sub>M</sub></b>   | %  | 20          |
| <b>Adjustable rated current / of the motor / for motor overload protection / minimum</b>  | A  | 10          |
| <b>Continuous operating current in % of I<sub>e</sub> / at 40°C</b>   | %  | 115         |
| <b>Active power loss / at operating current / at 40°C / during operating phase / typical</b>  | W  | 8           |

#### Control electronics:

|  |    |             |
|--|----|-------------|
| <b>Type of voltage / of the controlled supply voltage</b>                              |    | AC/DC       |
| <b>Control supply voltage frequency / 1 / rated value</b>                              | Hz | 50          |
| <b>Control supply voltage frequency / 2 / rated value</b>                              | Hz | 60          |
| <b>Relative negative tolerance / of the control supply voltage frequency</b>           | %  | -10         |
| <b>Relative positive tolerance / of the control supply voltage frequency</b>           | %  | 10          |
| <b>Control supply voltage / 1 / at 50 Hz / for AC</b>                                  | V  | 110 ... 230 |
| <b>Control supply voltage / 1 / at 60 Hz / for AC</b>                                  | V  | 110 ... 230 |
| <b>Relative negative tolerance / of the control supply voltage / at 60 Hz / for AC</b> | %  | -15         |
| <b>Relative positive tolerance / of the control supply voltage / at 60 Hz / for AC</b> | %  | 10          |
| <b>Control supply voltage / 1 / for DC</b>   | V  | 110 ... 230 |
| <b>Relative negative tolerance / of the control supply voltage / for DC</b>            | %  | -15         |

|   |   |     |
|---|---|-----|
| <b>Relative positive tolerance / of the control supply voltage / for DC</b> | % | 10  |
| <b>Type of display / for fault signal</b>                                   |   | red |

#### Mechanical design:

|   |    |  |
|---|----|--|
| <b>Size of the engine control device</b>                  |    | S0   |
| <b>Width</b>  | mm | 45   |
| <b>Height</b>   | mm | 125  |
| <b>Depth</b>  | mm | 155  |
| <b>Type of mounting</b>                                   |    | screw and snap-on mounting   |
| <b>mounting position</b>                                  |    | With additional fan: With vertical mounting surface +/- 90° rotatable, with vertical mounting surface +/- 22.5° tiltable to the front and back Without additional fan: With vertical mounting surface +/-10° rotatable, with vertical mounting surface +/- 10° t |
| <b>Distance, to be maintained, to the ranks assembly</b>  |    |  |
| • upwards   | mm | 60   |
| • sideways  | mm | 15   |
| • downwards   | mm | 40   |
| <b>Installation altitude / at a height over sea level</b> | m  | 5,000  |
| <b>Cable length / maximum</b>                             | m  | 300  |
| <b>Number of poles / for main current circuit</b>         |    | 3  |

#### Electrical connections:

|   |  |  |
|---|--|--|
| <b>Design of the electrical connection</b>  |  |  |
| • for main current circuit  |  | screw-type terminals   |
| • for auxiliary and control current circuit   |  | screw-type terminals   |
| <b>Number of NC contacts / for auxiliary contacts</b>   |  | 0  |
| <b>Number of NO contacts / for auxiliary contacts</b>   |  | 2  |
| <b>Number of changeover contacts / for auxiliary contacts</b>   |  | 1  |
| <b>Type of the connectable conductor cross-section / for main contacts / for box terminal / when using the front clamping point</b> |  |  |
| • solid   |  | 2x (1.5 ... 2.5 mm <sup>2</sup> ), 2x (2.5 ... 6 mm <sup>2</sup> ), max. 1x 10 mm <sup>2</sup> |
| • finely stranded / with conductor end processing   |  | 2x (1.5 ... 2.5 mm <sup>2</sup> ), 2x (2.5 ... 6 mm <sup>2</sup> )                             |
| <b>Type of the connectable conductor cross-section / for AWG conductors / for main contacts / for box terminal</b>                  |  |  |
| • when using the front c  |  | 1x 8, 2x (16 ... 10)   |
| <b>Type of the connectable conductor cross-section</b>  |  |  |
| • for auxiliary contacts  |  |  |
| • solid   |  | 2x (0.5 ... 2.5 mm <sup>2</sup> )  |
| • finely stranded / with conductor end processing   |  | 2x (0.5 ... 1.5 mm <sup>2</sup> )  |
| • for AWG conductors / for auxiliary contacts   |  | 2x (20 ... 14)   |

• finely stranded / with wire end proc

2x (20 ... 16)

### Ambient conditions:

#### Ambient temperature

- during operating
- during storage

|    |             |
|----|-------------|
| °C | -25 ... +60 |
| °C | -40 ... +80 |

#### Derating temperature

|    |    |
|----|----|
| °C | 40 |
|----|----|

#### Protection class IP

IP20

### Certificates/approvals:

#### General Product Approval

EMC

For use in hazardous locations



#### Test Certificates

#### Shipping Approval

[Type Test Certificates/Test Report](#)



#### other

[Declaration of Conformity](#)

[Environmental Confirmations](#)

### UL/CSA ratings

#### yielded mechanical performance (hp) / for three-phase squirrel cage motors

- at 220/230 V / at standard circuit
  - at 50 °C / rated value
- at 460/480 V / at standard circuit
  - at 50 °C / rated value

|    |    |
|----|----|
| hp | 5  |
| hp | 15 |

#### Contact rating designation / for auxiliary contacts / according to UL

B300 / R300

### Further information:

#### Information- and Downloadcenter (Catalogs, Brochures,...)

<http://www.siemens.com/industrial-controls/catalogs>

#### Industry Mall (Online ordering system)

<http://www.siemens.com/industrial-controls/mall>

#### CAX-Online-Generator

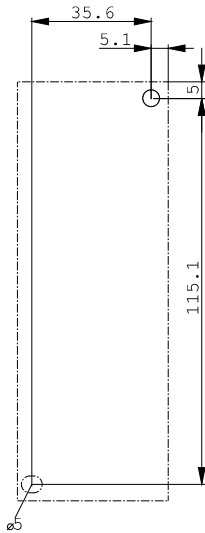
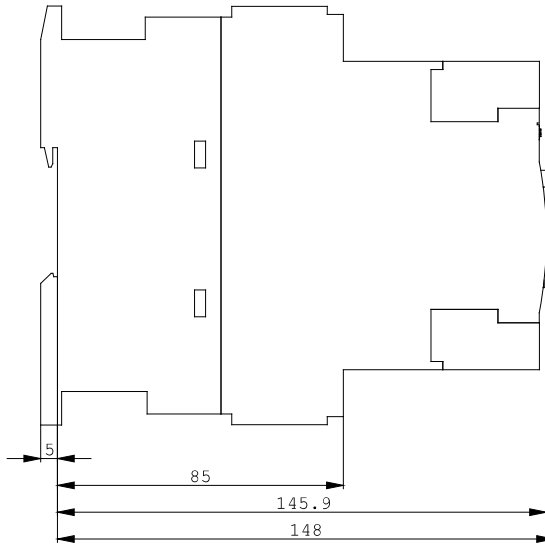
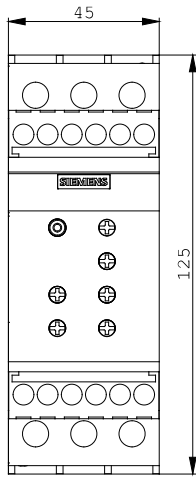
<http://www.siemens.com/cax>

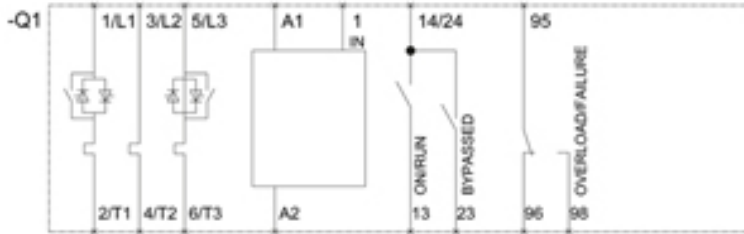
#### Service&Support (Manuals, Certificates, Characteristics, FAQs,...)

<http://support.automation.siemens.com/WW/view/en/3RW4026-1BB14/all>

#### Image database (product images, 2D dimension drawings, 3D models, device circuit diagrams, ...)

[http://www.automation.siemens.com/bilddb/cax\\_en.aspx?mlfb=3RW4026-1BB14](http://www.automation.siemens.com/bilddb/cax_en.aspx?mlfb=3RW4026-1BB14)





last change:

Oct 28, 2013