

# Refrigeration Fan Motors - ECM

MARS SERIES **064**



## ECplus™ Wide Range Universal Refrigeration Motor

The ECplus™ electronically commutated ball bearing motor is used in commercial refrigeration applications and can replace standard shaded pole or other EC type motors ranging in size from 1 W to 22 W. The ECplus™ is approximately 3 times more efficient than standard shaded pole motors making it an excellent choice for upgrade retrofit projects. The robust IP55 rating ensures protection against water spray from maintenance wash downs.

### Applications:

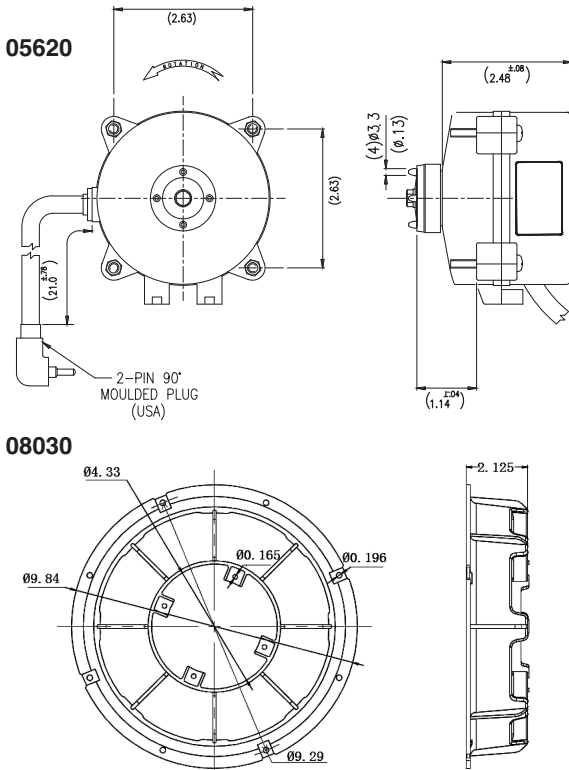
- Light commercial ventilation units
- Display/refrigeration display units
- Bottle coolers
- Freezer cabinets
- Vending machines
- Ice machines
- Small walk in coolers

### Features:

- Peak efficiency greater than 65%
- Incorporating 'soft start' feature ensures quiet ramp up to desired speed which assists in eliminating vibration noise & increasing life expectancy of integrated electronics
- One model covers 1 Watt to 22 Watt shaft power
- Support 6", 7", 8" & 10" (maximum 10" 28 degree pitch) fan blades
- 90° angle Iyall plug

### Specifications:

- Thermally protected with electronic overload protection
- IP55 Rating
- 1550 RPM
- Approvals UL & CUL



MARS NO.	DESCRIPTION
08030	8" Plastic Basket for ECplus™ Motor

## 1550 RPM

MARS NO.	WATTS	VOLTS	MAX AMPS	ROT OSE	DIMENSIONS		
					A	B	C
05620	1 - 22 Watts	120	0.42	CW	1.14	2.48	1/4